

Layout #2 of 4 - HOSTED BY
DR. DENNIS BUTH







C_{HIPS}, C_{ERVESA}, C_{AMARADERIE}

What beautiful weather for our travels, tours, and togetherness.



Layout #3 of 4 - HOSTED BY
TERRY ROSS





??? did someone say "HELIX" ???





Layout #4 of 4 - HOSTED BY
LARRY GULICK



ah, the magic of mirrors...can you find it?





Buth's Cooperage, as in Dr. Dennis???



Tucker's Tires, as in Paul Tucker???



...old bald guy in front of a Barber Shop???

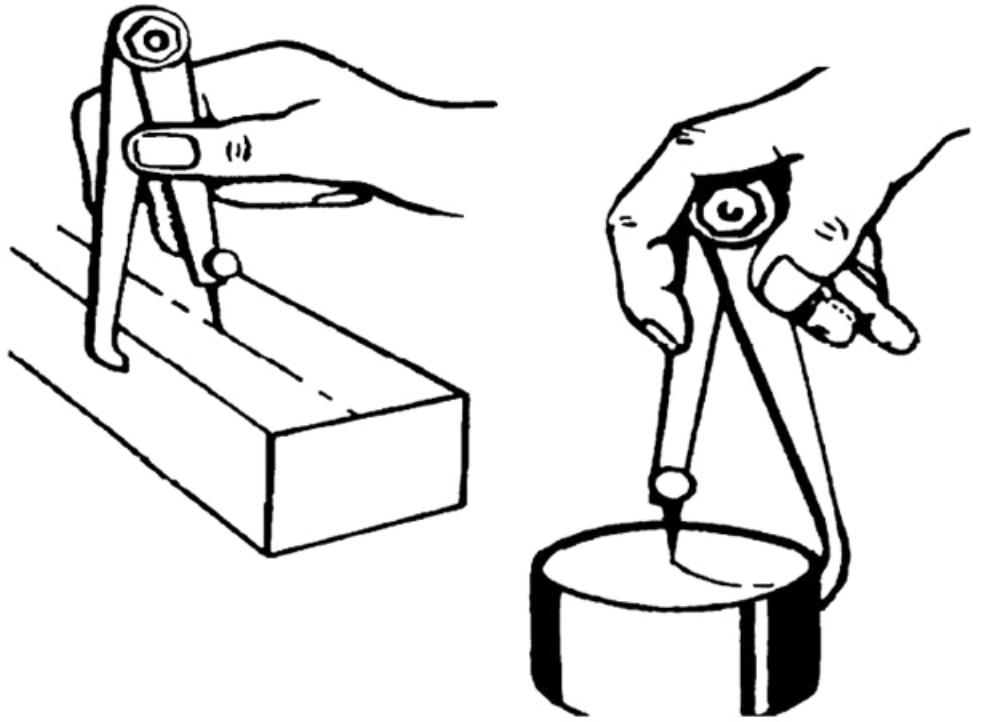


"Big Time Excitement in Town"

The photographer's green with black trim - panel truck has just been delivered from the Ford Dealership and the crowd is growing to show their appreciation.

...oh, you naughty-minded person...

Every day tools we all use or have used
just with a
“double entendre”



This issue we feature:

Hermaphrodite Calipers

A caliper is used to obtain precise small measurements and is used in a wide variety of professions and crafts, such as drafting, woodworking, metalworking, and gunsmithing. The oldest known caliper dates from the 6th century B.C. Types of traditional calipers include inside, outside, divider, and hermaphrodite. Modern calipers include vernier, dial and digital. Hermaphrodite calipers are also known as “odd leg” or “odd leg jenny” and are used to scribe lines parallel to an edge.

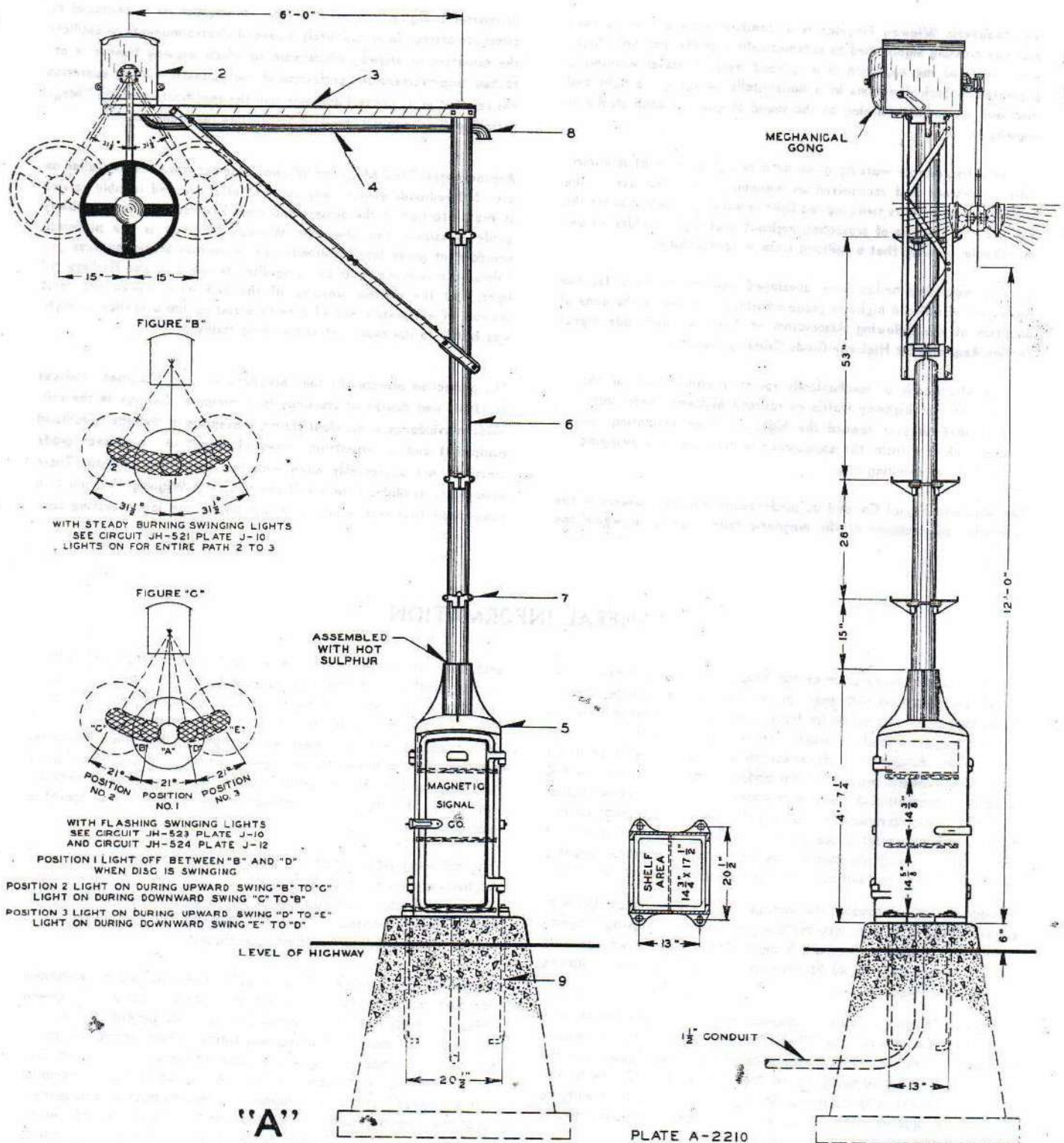
Please eMail your suggestions for future inclusion to the Editors.

PLATE A-2210 "MAGNETIC WIGWAG FLAGMAN"

Model 3 Wigwag Type Highway Crossing Signal Assembly

For Location at Side of Highway

Cantilever Bracket Type



Standard location at near right hand side of highway as viewed by approaching highway traffic with one signal located on each side of railroad tracks.

Approved Standard No. 3 of the Railroad Commission of the State of California General Order No. 75-B.

NMRA - CHISHOLM TRAIL DIVISION - ANNOUNCEMENTS

TRAIN RIDES

- Colorado Railroad Museum, Golden, CO

Optional train rides every Saturday. Catch a ride behind one of the Museum's steam or diesel locomotives in passenger cars from different eras in Colorado railroad history or on the uniquely Colorado Galloping Goose. Rides operate 10:00am to 4:00pm.

2014 Dates:

November 1, 8, 22, & 29, 2014

<http://coloradorailroadmuseum.org/train-rides-home/ride-the-rails/>

- MCoR CONVENTION

Our regional convention is scheduled to be held in Jefferson City, Missouri next June 5th-7th. Check out the webpage at:

ShowMeCentral.com

Brad Slone, MMR

Division 09 • South Central Missouri Area

- Turkey Creek Division

will holding its annual train show on July 25th information in this issue.

- 2015 Layout Design and Operations Weekend

Several of us are planning on attending the 2015 Layout Design and Operations Weekend March 20-22 in Tulsa, OK. As a matter of background, this is an annual meet hosted by the Indian Nations Division of the NMRA, that consists of a full day of clinics presented by regionally renowned speakers geared toward designing and operating practices on model railroads. Around that are three operating sessions, Friday night, Saturday night, and Sunday morning where participants can choose from an array of local layouts to operate on. At least two of these layouts, one HO standard gauge and one Sn3 have been in national publications.

This year's speakers include:

- (1) Charlie Duckworth from Omaha, NB.
The Bagnell Branch
Railroad Structures
- (2) Mike Borkon from Kansas City, MO.
The UP in Green River, WY
- (3) Dean Ferris:
Much Ado about Yard Operations
- (4) Ken Ehlers
Narrow Gauge Operations



The total cost for the activities including the day of presentations, the 3 operating sessions, and Saturday lunch is \$35.00 if done by February 28th. After that it is \$40.00. Operating slots on the various layouts are chosen on a first come first serve basis. I know that several of you on this list are narrow gauge's who have expressed interest in operating on Ken Ehler's Sn3 layout so this could be an opportunity to do so. Dave Steensland's beautiful HOn3 layout is also on the list.

If any of you have any questions, either about that weekend or in regards to participation in future local activities outlined above, please feel free to contact me at FriscoFriend@cox.net or call me at (316) 612-2219.

If you are definitely going to Tulsa, please eMail or call me and let me know.

Here are the details for the two train rides. One out of Wichita and the other out of Winfield.

Jim McKeel
Wichita, KS

"We don't stop playing because we grow old, we grow old because we stop playing."
George Bernard Shaw

Yoder Heritage Train

Saturday, April 25, 2015

The Kansas & Oklahoma (K&O) Railroad, and the Heart of the Heartlands Railroad Club will be hosting the Yoder Heritage Train on Saturday, April 25, 2015. This train ride will run from Wichita, KS to Yoder, KS on the K&O's Hutchinson Subdivision (former Missouri Pacific lines) via Maize, Colwich, Mount Hope, and Haven, KS. Passengers will have three hours to visit the shops in downtown Yoder and enjoy a meal (meal NOT included in fare) before re-boarding the train for the trip back to Wichita.

Boarding area in Wichita: Walker Street at Osage Street
(three blocks north of Harry Street between Seneca Street and McLean Blvd).

Please be on board no later than 8:25am
Departure from Wichita promptly at 8:30am
Arrive in Yoder at approx. 11:00am
Departure from Yoder promptly at 2:00pm
Arrive back in Wichita at approx. 4:30pm

Fare per person (cash or check only): \$45.00
(One child 9 years of age or younger rides free with each paying passenger.)

Checks should be made out to "HEART OF THE HEARTLANDS".

Tickets are non-refundable. Lunch NOT included.

Seating is limited to 210 passengers. These historic railroad cars are not handicap accessible. There are limited restroom facilities available on the train. Not responsible for changes of equipment, route, schedule, or cancellation (if necessary).

Tickets can be purchased at:
Garden Railway Gizmos
1425 North Broadway Street
Wichita, KS, 67214-1103
(316) 262-4300
Thursday & Friday • Noon-7pm
Saturday • 10am-7pm;
Sunday • Noon-5pm

Heart of the Heartlands Website:
www.HeartlandsTrainClub.org

TRAIN RIDE

FLINT HILLS EXPRESS

Saturday, May 9, 2015

The South Kansas & Oklahoma Railroad and the Heart of the Heartlands Railroad Club
will be hosting the Flint Hills Express
on Saturday, May 9, 2015.

This train ride will run from Winfield, KS east into the scenic Flint Hills on the SK&O's Moline Subdivision
(former Santa Fe lines) to near Grenola, KS and then return to Winfield, KS.

Boarding area in Winfield:
East 5th Avenue just east of Main Street
(US 77 / K 15) at the north edge of downtown Winfield, KS.

Two departures: 9:00am and 2:00pm

Please be on board at least 5 minutes before departure.
Train will return to Winfield approx. 3 hours after departure.

Fare per person - \$25.00
(cash or check only)
(One child 9 years of age or younger rides free with each paying passenger.)

Checks should be made out to "HEART OF THE HEARTLANDS".

Tickets are non-refundable.

Seating limited to 210 passengers.

No food or drink may be brought on the train.

The historic passenger cars are not handicap accessible. There are limited restroom facilities available on the train.
Not responsible for changes of equipment, route, schedule, or cancellation (if necessary).

Tickets can be purchased at:
Winfield Chamber of Commerce
123 East 9th Avenue
Winfield, KS 67156
(620) 221-2420
Monday - Friday, 8am - 5pm

Garden Railway Gizmos
1425 North Broadway Street
Wichita, KS, 67214-1103
(316) 262-4300
Thursday & Friday • Noon-7pm
Saturday • 10am-7pm;
Sunday • Noon-5pm

Heart of the Heartlands Website:
www.HeartlandsTrainClub.org

Here is the information for a private railcar trip that I've helped coordinate. It that will run from St. Louis to Washington DC in June.

We have added a second sleeper car (former Union Pacific RR sleeper Pacific Union) and only have six roomettes remaining!!!

Jim McKeel
Wichita, KS

To The Capitol ... By Private Car

June 3 - 10, 2015

This June join the St. Louis Chapter of the National Railway Historical Society for an eight-day trip to Washington DC. We will be traveling on the Pullman sleeper *Cimarron River* for a scenic and relaxing round trip from St. Louis. Our trip will begin on Wednesday afternoon, June 3, when we board our private car at the downtown St. Louis Amtrak station. We will depart at 5:30 pm and arrive in Chicago late that night.

Thursday morning awake in the Windy City for a day of sightseeing and shopping. Complimentary coffee and juice will be ready when you rise. Enjoy breakfast and lunch or an early dinner in one of Chicago's many restaurants. Our departure for Washington will be at 5:45 that afternoon behind Amtrak's *Cardinal*. Our 24-hour trip will take us through Indianapolis and Cincinnati, then along the Ohio River to Huntington, West Virginia. From there we follow the Kanawha and New Rivers through the Allegheny Mountains of West Virginia, enjoying the daylight ride through the spectacular New River Gorge. We will pass through White Sulphur Springs, home of the famous Greenbrier luxury resort, before crossing Virginia for an early Friday evening arrival in Washington DC.

Saturday and Sunday are yours to explore the many sights of our nation's capitol. Return each evening to the comfort of your accommodation on *Cimarron River*, parked at the magnificent Union Station.

Monday is your day to see that sight you might have missed or get that last souvenir. Our departure for Chicago will be at 4:00 p.m. behind Amtrak's *Capitol Limited*. A late afternoon ride through the Potomac River valley will take us through Harper's Ferry, West Virginia, and Cumberland, Maryland, before climbing Sand Patch grade for our passage over the Allegheny Mountains. During the night we will pass through Pittsburgh, Cleveland and Toledo before arriving in the Windy City at 9:00 a.m. Visit the famous Lou Mitchell's restaurant for breakfast (just a block west of Union Station), then enjoy an afternoon shopping the loop or relaxing along the lakefront. Have dinner in one of Chicago's many restaurants before returning to *Cimarron River* for the night. Wednesday morning we'll depart Chicago at 9:25 and arrive in St. Louis at 3:00 pm.

Available accommodations on *Cimarron River* include single roomettes and double bedrooms. Two additional adjoining bedrooms will be ensuited to serve as a lounge. Each accommodation has its own sink with hot and cold running water and bedrooms have their own toilet. *Cimarron River* has a full-size shower and is fully climate controlled.

This is a Picnic Class trip, meaning that passengers are responsible for their own food and beverage. Coffee and orange juice will be provided each morning and passengers will have access to the Amtrak café car both directions between St. Louis and Chicago. Drinking water and ice will be available on the car. A microwave, toaster and coffee maker are available. Pillows, towels and linens are provided on *Cimarron River*.

Fare is **\$1,095** for a roomette (single occupancy) or **\$2,050** for a bedroom (single or double occupancy) and includes all rail transportation and seven nights accommodations on *Cimarron River*. Reservations are on a first-come, first served basis. A deposit of **\$400 per person** is required with your reservation to hold your space, with the balance due by **May 2**. Make checks payable to **St. Louis Chapter NRHS** and mail to:

Rick Sprung
Trip Director – St. Louis Chapter NRHS
10101 Carolynne Drive
St. Louis, MO 63128

Please include the names of **all travelers**, your address, phone number and e-mail address.

Questions? Contact Rick Sprung at (314) 842-5980 or via e-mail at sprung@att.net.

Don't miss this affordable and relaxing opportunity to visit the nation's capitol - make your reservation now before it sells out! We hope to see you on board!

“COMING ATTRACTIONS”

In our next issue we will feature articles that had to be “scrubbed” from this issue due to all the “Train Show” information. Features from our Chisholm Trail Division will include:

- “Arizona Railroad Museum” by Charles Dugnolle
- “Multiple Time Era Modelling” by John Kraft
- “Tips and Techniques” from many of us
- additional tools with “*double entendre*”
- *and please, Please, PLEASE send some photos and your story to be included in:*

“ONCE UPON A TIME” GUESS WHO...???

- and much, MUCH more...

