

# Trails, Rails, & Tales



March – April, 2019  
Volume 5 • Number 2

The Official Newsletter of the *Chisholm Trail Division* of the **NMRA**

## FROM THE EDITOR'S DESK BY JIM MARLETT

As you probably noticed, I've started working on the appearance of this newsletter. It's still a work in progress, though. It won't be exactly like Alan Aagaard's version, in part because I just don't have the skills. But I am striving for a slicker look than you saw in my last attempt.

One of the things I have really liked about the previous Trails, Rails, & Tales is the masthead at the top of the first page. I've kept that with a few minor tweaks. Kudos to Alan for that.

One difference will be that it will be smaller. I just don't have the time for a large production and I don't want this newsletter to be like my railroad – working on it for almost fifty years and never having it even close to finished. Rather, I want to concentrate on getting it out in a timely fashion and having information that Chisholm Trail members will find useful. That last part is going to depend on you. Let me know what you want to see and, conversely, let me know what you don't like. My skin is pretty thick.

Don't forget, I need material. Please feel free to submit things by email, snail mail, or in person. If you don't think you are a writer or photographer, no problem. I will feel free to edit your submissions to my liking!

Finally, I want to thank Alan Aagaard for creating and shepherding this newsletter for the first four years of its existence. I know beyond a doubt that you and I both have appreciated his efforts. Why else would anyone thank me for putting out the feeble effort I made in Volume 5, Number 1? It has to be because you missed Alan's TR&T!

**TRAILS, RAILS, & TAILS**  
is published bi-monthly.  
It is sent to members of the  
Chisholm Trail Division of  
NMRA

**DIRECTOR**  
Philip Aylward  
[aylward1@cox.net](mailto:aylward1@cox.net)

**SUPERINTENDENT**  
Rob Neises  
[robby\\_nmra@yahoo.com](mailto:robby_nmra@yahoo.com)

**ASSISTANT  
SUPERINTENDENT**  
Dean Lippincott

**PAST SUPERINTENDENT**  
Pamela MacPhail  
[ict\\_pamela@cox.net](mailto:ict_pamela@cox.net)  
2016-2017

**PAYMASTER/TREASURER**  
Philip Aylward  
[aylward1@cox.net](mailto:aylward1@cox.net)

**CLERK/SECRETARY**  
Randy Stucky  
[rita.stucky@wesleymc.com](mailto:rita.stucky@wesleymc.com)

**WEBMASTER**  
[http://ctd-mcor-nmra.tripod.com/  
ctd-mcor-nmra.html](http://ctd-mcor-nmra.tripod.com/ctd-mcor-nmra.html)  
Rob Neises  
[robby\\_nmra@yahoo.com](mailto:robby_nmra@yahoo.com)

**NEWSLETTER EDITOR**  
**PRO TEM**  
Jim Marlett  
[jmarlett@cox.net](mailto:jmarlett@cox.net)

Submissions for publication are  
strongly encouraged.

Logo design by Alan Aagaard

## **FROM THE DIRECTOR'S DESK**

**BY PHIL AYLWARD**

I thank all that helped with the February train show. We had a very good show for 2019. Looks like we had over 900 paid attendance. That was about 100 more paid attendance than last year. I also noted a lot more children under 10 and families coming through.

Look forward to next year.

Let's talk about our Convention coming up in June this year. It will be a great convention. We will have clinics, contests and a tour of Wichita and the Arkansas Valley Interurban (A.V.I.). We will have openings for a chance to operate at the club in August. We are asking if you going to the convention please sign up as soon as you can. Please don't put it off until the last min.

Model Railroading is Fun.

## **FROM THE SUPERINTENDENT'S DESK**

**BY ROB NEISES**

Editor's note: It is my intention to run this column with each issue, but as most of you know, Rob has been suffering some pretty serious health issues. I decided not to nag him too much for this issue. I did have a telephone conversation with him recently and I know he wanted to remind everyone to register for the Mid-Continent Region NMRA Convention in Wichita this June and I would encourage you to do so. It will be fun!

## MID-CONTINENT REGION NMRA CONVENTION

**It's closer than you think!**

### 2019 Mid-Continent Region Convention and Train Show

Wichita, Kansas

June 20-23, 2019

[Click Here for Info and Registration](#)



Presented by Chisholm Trail Division

# WICHITA TRAIN SHOW AND SWAP MEET

RANDOM PHOTOS BY JIM MARLETT





## WICHITA TRAIN SHOW CONTEST WINNERS

### Steam Engines

1<sup>st</sup> Pamela MacPhail

### Diesel and Other Engines

1<sup>st</sup> James Hogben

2<sup>nd</sup> Pamela MacPhail

### Passenger Cars

1<sup>st</sup> Pamela MacPhail

### Freight Cars

1<sup>st</sup> Lamont Jones

2<sup>nd</sup> Terry Ross

3<sup>rd</sup> Mark Schubert

### Caboose

1<sup>st</sup> Terry Ross

### Non-revenue Cars

1<sup>st</sup> Terry Ross

### Tongue in Cheek

1<sup>st</sup> Randy Stucky

2<sup>nd</sup> Randy Stucky

### Structures

1<sup>st</sup> Alan Meinhodt

2<sup>nd</sup> Lamont Jones

### Diorama

1<sup>st</sup> Pamela MacPhail

2<sup>nd</sup> Dennis Howe

### Modules

1<sup>st</sup> Darla Jackson

2<sup>nd</sup> Robert Simmons

3<sup>rd</sup> John R. Porter

### Photos – Prototype

1<sup>st</sup> Ron Neher

2<sup>nd</sup> Terry Ross

3<sup>rd</sup> Terry Ross

### Photos – Model

1<sup>st</sup> Mike Grommesh

2<sup>nd</sup> Terry Ross

3<sup>rd</sup> Terry Ross

### Youth

1<sup>st</sup> Duane Ault

### Favorite Train

1<sup>st</sup> Robert Neill

2<sup>nd</sup> Pamela MacPhail

3<sup>rd</sup> Randy Stucky

### Best of Show

Pamela MacPhail



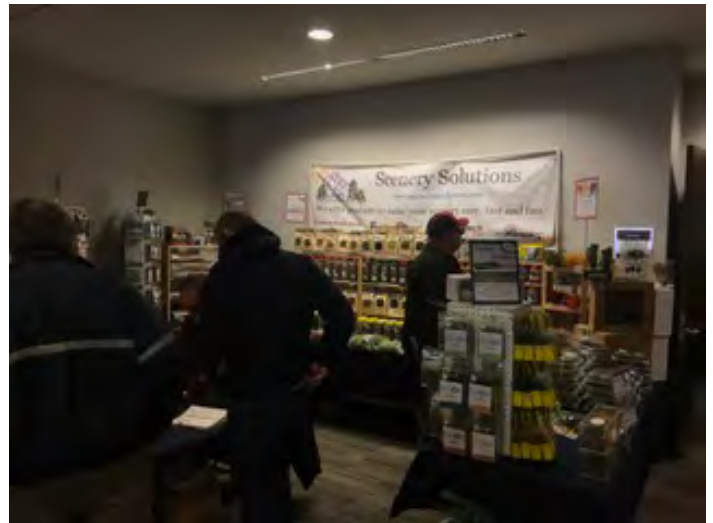
*Pam MacPhail's Best of Show winner*

# DALLAS AREA TRAIN SHOW

PHOTOS AND ARTICLE BY GENE BOWERS

The Dallas Area Train Show at the Plano Center in Plano, TX is a winter event each year and was held on January 19-20. The organization puts on train shows across the Greater Dallas area throughout the year. There are 27 model train clubs that constitute the Dallas Area Train Show organization. I attended the show with my son and my grandson. We moved among the many traveling club layouts viewing everything from Z scale layouts to G scale layouts. The Plano Center is not all that large and this show fills the entire facility for two days. Many local vendors support the show as do several national vendors. I didn't take many pictures because I have been to this particular show a couple of times in the past. The final picture is of a working locomotive and rail car of a scale I do not know. This show is where I made the acquaintance of Mike Webb from Bentonville, Arkansas. He has been to our show in past years. Needless to say, my grandson had a great time and ask a lot of questions. I have given him a Lionel train set and made sure he received a Santa Fe Box Car for his railroad. The show is very well attended, to the point it is somewhat difficult to navigate through the walkways.





# NATIONAL MODEL RAILROAD MONTH IN HALSTEAD

## PHOTOS AND ARTICLE BY RANDY STUCKY

To celebrate November as National Model Railroad Month, Phil Aylward set up a small (4'x8') layout at the Halstead Public Library. The layout drew crowds from the young to kids and their parents and even grandparents.



*This is the layout. The cars were Phil's and Santa Fe engines were Randy's.*



*A crowd-pleasing feature of Phil's layout is this crossover. Just enough cars are added to the train to create a near miss between the locomotives and the caboose.*



*A building created by Bob Neill. Rumor has it that there was a ghost in the barn.*



*Civil War scene.*



*A display of engines representing scales from Z to G.*



*The book table – always a plus in a library.*



*The NMRA table including the NMRA Magazine and membership information.*

## CALENDAR OF EVENTS

INCLUDES NON-NMRA EVENTS

### MARCH 2019

#### March 5 – Chisholm Trail Division of NMRA

**monthly meeting.** Gather at 6:45PM.  
Meeting from 7:00-9:00. Olivet Baptist Church, 3440 W. 13th St., Wichita, KS (13th & High). Topics scheduled are MidCo Convention update and Some Trains in Southern Australia.

#### March 14 – Wichita Area Model Railroaders

**Luncheon.** 11:30AM at Spears Restaurant and Pie Shop, 4323W. Maple, Wichita, KS

### APRIL 2019

#### April 2 – Chisholm Trail Division of NMRA

**monthly meeting.** Gather at 6:45PM.  
Meeting from 7:00-9:00. Olivet Baptist Church, 3440 W. 13th St., Wichita, KS (13th & High)

#### April 11 – Wichita Area Model Railroaders

**Luncheon.** 11:30AM at Spears Restaurant and Pie Shop, 4323W. Maple, Wichita, KS

### MAY 2019

#### May 7 – Chisholm Trail Division of NMRA

**monthly meeting.** Gather at 6:45PM.  
Meeting from 7:00-9:00. Olivet Baptist Church, 3440 W. 13th St., Wichita, KS (13th & High)

#### May 9 – Wichita Area Model Railroaders

**Luncheon.** 11:30AM at Spears Restaurant and Pie Shop, 4323W. Maple, Wichita, KS

### JUNE 2019

#### June 1-2 – Center of the Nation Model Train

**Exposition.** Sunflower North Building,  
Kansas State Fair Grounds, Hutchinson, KS.  
Saturday 9:00AM-5:00PM  
Sunday 10:00AM-3:00PM  
[http://  
www.kansascentralmodelrailroaders.org/train-  
show.html](http://www.kansascentralmodelrailroaders.org/train-show.html)

#### June 4 – Chisholm Trail Division of NMRA

**monthly meeting.** Gather at 6:45PM.  
Meeting from 7:00-9:00. Olivet Baptist Church, 3440 W. 13th St., Wichita, KS (13th & High)

#### June 13 – Wichita Area Model Railroaders

**Luncheon.** 11:30AM at Spears Restaurant and Pie Shop, 4323W. Maple, Wichita, KS

#### June 20-23 – Mid-Continent Region

**Convention and Train Show.** Wichita, KS  
[http://  
wichitamcor2019convention.tripod.com/  
mainx.html](http://wichitamcor2019convention.tripod.com/mainx.html)

### JULY 2019

July 7-11 – NMRA National Convention. Salt Lake City, UT <http://www.nmra2019slc.org/>

### AUGUST 2019

### SEPTEMBER 2019

#### September 4-7 – National Narrow Gauge

**Convention.** Sacramento, CA [https://  
www.nngc2019.org/](https://www.nngc2019.org/)

**I know this isn't everything that should be on our calendar. Please send me any other events or meetings that you think should be included.**

Jim Marlett  
[jmarlett@cox.net](mailto:jmarlett@cox.net)