

Trails, Rails, & Tales



May – June, 2019
Volume 5 • Number 3

The Official Newsletter of the *Chisholm Trail Division* of the **NMRA**

FROM THE DIRECTOR'S DESK BY PHIL AYLWARD

We have been working hard on the Convention coming up in June. We will have some fine clinics, some tours, don't forget the home layouts and we will have some G scale on as well. So please sign up as soon as you can. Don't forget the Train Show on Sat. & Sun. Convention goers will be able to get in the show at 8 am on Sat. Don't forget to look in on the website for updates. Tell all you know about the convention and train show.

Thank You
–Phil

FROM THE SUPERINTENDENT'S DESK BY ROB NEISES

Welcome everyone. If you missed it, I've been vacationing in some of the best rehab and nursing facilities. But don't think I've spent 2019 on my backside – it's been primarily on my posterior. As many of you know, 2019 is my third and final year as Superintendent. Myself and the Executive Committee have been meeting nearly weekly to make the MCoR Regional one of the most memorable. All we need now is all of you! Please register and volunteer the best you can. June 20-23 is the Convention and Train Show at the Doubletree Airport Hotel.

Finally, I'd like to thank all of you for your help and words of encouragement during the past 5-6 months. It helps when I hear from you!

Thank you Chisholm Trail Division.
–Rob

TRAILS, RAILS, & TAILS
is published bi-monthly.
It is sent to members of the
Chisholm Trail Division of
NMRA

DIRECTOR
Philip Aylward
aylward1@cox.net

SUPERINTENDENT
Rob Neises
robby_nmra@yahoo.com

**ASSISTANT
SUPERINTENDENT**
Dean Lippincott
dean.lippincott@gmail.com

PAST SUPERINTENDENT
Pamela MacPhail
ict_pamela@cox.net
2016-2017

PAYMASTER/TREASURER
Philip Aylward
aylward1@cox.net

CLERK/SECRETARY
Randy Stucky
rita.stucky@wesleymc.com

WEBMASTER
[http://ctd-mcor-nmra.tripod.com/
ctd-mcor-nmra.html](http://ctd-mcor-nmra.tripod.com/ctd-mcor-nmra.html)
Rob Neises
robby_nmra@yahoo.com

**NEWSLETTER EDITOR
PRO TEM**
Jim Marlett
jmarlett@cox.net

Submissions for publication are
strongly encouraged.

Logo design by Alan Aagaard

FROM THE EDITOR'S DESK

BY JIM MARLETT

Time sure flies when you're having fun! I've been working on a lift-out/duck-under for my own railroad. It was originally going to be a lift-up gate, but I decided I could make a more accurate device if it was just removable. With a track level of 57 inches, it is high enough that most of the time it will be left in place and just be a duck-under. If I need the extra clearance, I can undo four thumbscrews and lift it out. I'll probably do an article on this one of these days since I took pictures along the way.

A dilemma I've been facing is whether to include a spur in a long section of single track main. It is only a dilemma because the switch is already on the roadbed I salvaged from my previous layout. It is a hand-laid wye with unequal curved diverging rails. On my previous layout, it was on the upper end of a switchback. On this layout, it is out in the middle of nowhere. This isn't the prettiest switch I've ever built either. Besides, it is above a future yard on the lower deck and I would like to avoid having switching operations on both levels at the same spot. If it was a commercial switch on a flex track line, it would be long gone. But hand laid track with wooden ties glued to Homasote is a bit more challenging to change. I've decided to keep it and I guess it will lead to a logging line hidden in the mountains.



The switch that caused my dilemma.

My point in bringing up my own project is to encourage you to share what you have been doing on your railroads in this newsletter. Or maybe just a few shots of your railroad. Or a track plan. Or a structure. Or scenery. Or how about something being done at a club layout? It may be old hat to you, but it's probably new to someone else. Just email your contribution to me and I'll do the rest.

MID-CONTINENT REGION NMRA CONVENTION

It's sooner than you think!

2019 Mid-Continent Region Convention
and Train Show

Wichita, Kansas

June 20-23, 2019

[Click Here for Info and Registration](#)



Presented by Chisholm Trail Division

LETTER FROM THE CONVENTION COMMITTEE AS EMAILED BY HANK KRAICHELY, PRESIDENT, MCoR

You should have received this email from Hank Kraichely, President of the Mid Continent Region of NMRA, passing along this letter from the conference committee. However, there was some concern on our local level that it may not have been seen by all the intended recipients. So just in case your computer threw it in your junk mail or you just didn't recognize the sender and ignored it, here it is again:



Below is a message from the 2019 MCoR Convention Host Committee in Wichita. Please join me there for a great time of Model Railroading and fellowship!

Hank

Greetings fellow MCoR members,

The NMRA Mid-Continent Region Convention is drawing near in Wichita, Kansas. The planning committee has been working hard to assemble everything that is needed for a successful convention. Planning with convention hotel management, seeking clinic presenters and organizing operations volunteers are but a few of the many tasks undertaken by the convention planning committee. We look forward to welcoming all of you to the convention.

Our convention hotel is the Double Tree by Hilton, located at 2098 Airport Road, Wichita, KS 67209. Please call the hotel directly for reservations at 316-945-5272. To receive the convention rate mention that you are affiliated with the Mid-Continent Region Convention. Consult the convention website for directions to the hotel.

On Thursday, June 20th The Registration Site will be open from 2:00 p.m. to 8:00 p.m. Evening clinics will be offered at 6:00 p.m. and 7:15 p.m.

On Friday, June 21st The Registration Site will be open from 8:00 a.m. to 6:00 p.m. Morning clinics are offered at 9:00 a.m. and 10:15 a.m. Lunch is from 11:15 a.m. to 1 p.m. Afternoon clinics are

offered at 1 p.m., 2:15 p.m. and 3:30 p.m. Dinner is from 4:30 p.m. to 7:00 p.m. Evening clinics will be offered at 7:00 p.m. and at 8:15 p.m. The Augusta Train Club will conduct an Operating Session at their site in Augusta, KS. Go to the convention website for complete information.

On Saturday, June 22nd The Registration Site will be open from 10:00 a.m. to 2:00 p.m. Morning clinics will be offered at 9:00 a.m. and 10:15 a.m. The convention banquet festivities will begin at 6:00 p.m. Check the convention website for the banquet timetable.

On Sunday, June 23rd Plan to attend local layouts on your way home. Consult the convention website for the tour schedule, map and timetable.

The train show will open on Saturday, June 22nd at 8:00 a.m. for convention attendees only. Entrance into the show will be by your convention badge. The train show will open to the public at 9:00 a.m. The show will be open Sunday, June 23rd as well. Vendors are invited to visit the convention website for table information.

Go to the convention website to register. Select **REGISTRATION & MAIL-IN**. Print the form, enter the required information and desired purchases. Payment of registration fees may be by check or through PayPal.

www.WichitaMCoR2019Convention.org

Send the completed registration form and payment to:

**2019 MCoR Convention
4247 N. St. James Place
Bel Aire, KS 67226**

Registration Policy: Once your registration form has been received and processed, you will be sent a response form, by email, confirming that we have received your registration form and fee payment. All registration forms received by May 31, 2019, will be processed as pre-registrations. Any registration forms received on or after June 1, 2019, will be considered walk-in registrations and will be processed when the attendee arrives at the registration site. The \$125.00 basic registration fee covers convention registration, clinic admissions, banquet admission and train show admission. Extra fare excursions will be posted on the convention website. **Change Policy:** For a cancellation of or change to a registration made prior to May 15, 2019, a refund of up to the full amount paid will be made available. For a cancellation of or change to a registration made between May 16, 2019 and June 1, 2019, a refund of up to one-half of the amount paid will be made available. For a cancellation of or change to a registration made after June 2, 2019, no refund will be made available. A check will be cut for any refunds due and will be sent to the attendee by mail no later than July 12, 2019.

Welcome to Wichita, we look forward to seeing you in June,

your MCoR Convention Planning Committee



2019 NMRA Mid-Continent Region Convention

Wichita, KS

June 20 – 23, 2019

Registration Form

PLEASE TYPE OR PRINT

www.WichitaMCoR2019Convention.org

NMRA #:

Registrant Full Name:

Complete Name As It Should Appear on Badge:

Name of Companion

Companion Name As It Should Appear on Badge:

Street Address:

Registrant's email:

Companion email:

Names & Ages (As Of June 2019) of Youth Family Member(s):

Note: Registration Fee Includes Convention Entry, Clinics, Banquet, Train Show Admittance.

Banquet Choice: (Choose One per person) _____ Chicken _____ Salmon _____ Vegetarian

Convention Fees

Sub-Total

Sub-Total

Basic Registration _____ x \$125.00	\$	Convention T-Shirt _____ x \$20.00	\$
Companion* _____ x \$80.00	\$	Convention Polo Shirt _____ x \$30.00	\$
Youth * (age 5-11) _____ x \$50.00	\$	Convention Souvenir Cup _____ x \$5.00	\$
Banquet Only _____ x \$45.00	\$	Decals (Scale _____) _____ x \$5.00	\$
++ Excursion (TBA)	\$	Convention Cinch Bag _____ x \$5.00	\$
Convention Hat _____ x \$12.00	\$	+ Convention Lanyard _____ x \$5.00	\$
Sun Visor Hat _____ x \$12.00	\$	+ Convention Lapel Pin _____ x \$5.00	\$
Rally Towel _____ x \$5.00	\$	+ Convention Patch _____ x \$5.00	\$
* Must Accompany a Basic Registration + Included With Basic Rate Registration ++ Excursion Info Coming Soon		Total Submitted To: MCoR 2019 \$ _____	

Note: Items ordered can be picked up at the Registration Desk at the Convention.

Payment of Fees

Check / Money Order payable to: **MCoR 2019**

or

Mail to: 2019 MCoR Convention
4247 N. St. James Place
BelAire, KS. 67226

Pay Online with Major Credit Card through PayPal

Special Considerations:

MY MODEL RAILROAD

BY JAY SCHMUCKER

I am mainly an O and S gauge guy, which is my true love. I operate at the Wichita Toy Train Museum several times a month. On a more serious side, my home layout is HO. I started this layout after I retired, so it is about four years old. I also manage three websites. One is the kansascentralmodelrailroaders.org. This website contains a Timetable page where I list local and area events. (Editor's note: I'll be stealing some of those!) The other two are wichitatoytrainmuseum.org and ttos-sooner.org.

Here are some photos of my HO layout.



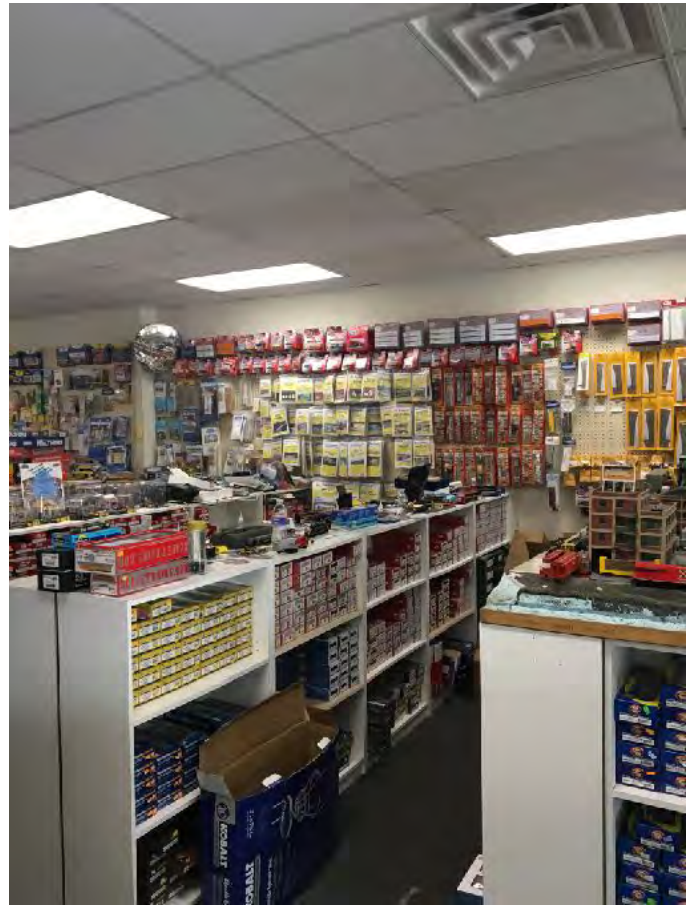


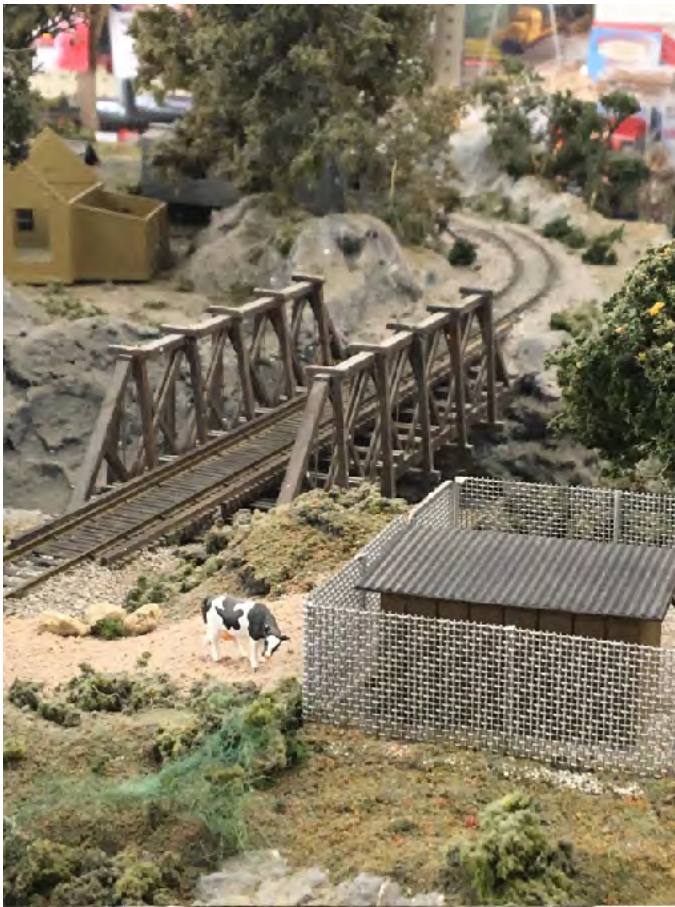
ONE OF MY FAVORITE HOBBY SHOPS

BY DEAN LIPPINCOTT

I was sent to Kansas City on a service call in late February and when finished, I drove over to Grandview, MO to one of my favorite MR shops – Show Me Model Railroad Company. It's one of those train stores that has been around forever with lots of inventory, old and current. I always spend a fair amount of time digging through the place looking for that long lost gem!!! Once again I did not come away empty handed.







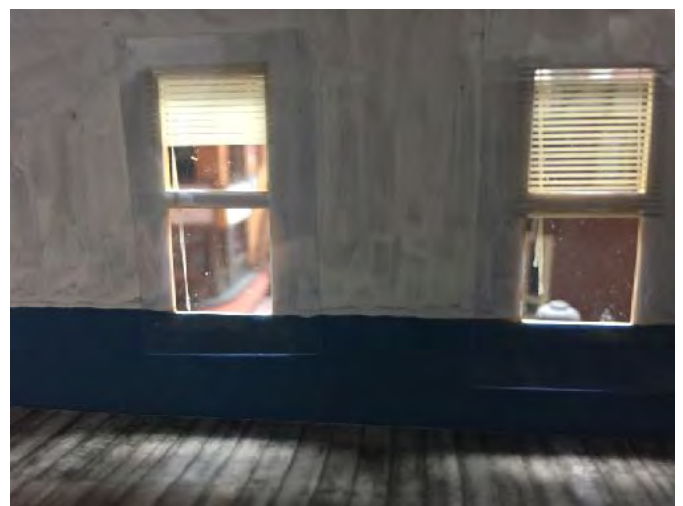
UPDATE ON LARRY GULICK'S RAILROAD

BY JIM MARLETT

The Program Committee met recently at Larry Gulick's house. As usual, the meeting ended with a trip to the basement to see the progress on Larry's On30 pike. His latest project is a stock pen with a feeding shed and office. He is shooting video as he progresses, so I'm sure there will be a program in it. The buildings are being built using a hybrid construction process of styrene where it made the most sense and printed paper where that made the most sense. Several of us have been intrigued by Bob Neill's paper models and have wanted to blend printed paper with wood or plastic. Larry has done it and I honestly thought the paper parts were three dimensional. He has been working on several models for towns and here is a sample.







CALENDAR OF EVENTS

INCLUDES NON-NMRA EVENTS

RECURRING EVENTS

Chisholm Trail Division of NMRA Monthly

Meeting Every first Tuesday of the month.
Gather at 6:45PM. Meeting from 7:00-9:00.
Olivet Baptist Church, 3440 W. 13th St.,
Wichita, KS (13th & High) <http://ctd-mcor-nmra.tripod.com/ctd-mcor-nmra.html>

Kansas Central Division of NMRA Every second Saturday of even numbered months at 1:00PM. Locations vary. Contact information is here: http://www.mcor-nmra.org/Divisions/Kansas_Central_Division/

Wichita Area Model Railroaders Luncheon.

Every second Thursday at 11:30AM. Spears Restaurant and Pie Shop, 4323W. Maple, Wichita, KS

Kansas Central Model Railroaders Business

Meeting. Every second Saturday from 11:00AM-Noon. 16 East 3rd Ave, Hutchinson, KS <http://www.kansascentralmodelrailroaders.org>

MAY 2019

May 24-26 – Katy Days Festival. Forest Park, Parsons, KS <http://www.katydays.com/>

JUNE 2019

June 1&2 – Center of the Nation Model Train

Exposition. Sunflower North Building, Kansas State Fair Grounds, Hutchinson, KS.
Saturday 9:00AM-5:00PM
Sunday 10:00AM-3:00PM
<http://www.kansascentralmodelrailroaders.org/train-show.html>

June 8 – Kansas City Narrow Gauge Meet

9:00AM, 8700 Shawnee Mission Parkway, Merriam, KS. Cost \$10. Mail check to Larry

Alfred, 14633 S. Chalet Drive, Olathe, KS 66062 by June 4, 2019.

June 20-23 – Mid-Continent Region

Convention and Train Show. Wichita, KS
<http://wichitamcor2019convention.tripod.com/mainx.html>

June 29&30 – Spring Creek Model Trains

Train Show. Deshler, NE. <http://www.springcreekmodeltrains.com/>

JULY 2019

July 7-11 – NMRA National Convention. Salt Lake City, UT <http://www.nmra2019slc.org/>

AUGUST 2019

August 25 – Mid America Train & Toy Show.

KCI Expo Center, Kansas City, MO <http://www.midamericatrainandtoyshow.com/>

SEPTEMBER 2019

September 4-7 – National Narrow Gauge

Convention. Sacramento, CA <https://www.nngc2019.org/>

September 28&29 – 25th Annual Wichita

Model Train Show. Presented by the Wichita Toy Train Museum at the Cessna Activity Center, Wichita, KS <http://www.wichitatoytrainmuseum.org/>

Please send me any other events or meetings that you think should be included on this calendar.

Jim Marlett
jmarlett@cox.net