

# Trails, Rails, & Tales



July-August 2020  
Volume 6 • Number 4

The Official Newsletter of the *Chisholm Trail Division* of the **NMRA**

## FROM THE DIRECTOR'S DESK

BY PHIL AYLWARD

I hope this finds you well. Hope you are keeping in touch with family and friends. This is a good time to work on the layout or get that unfinished model done.

Do you remember the pond making class with Pam. Well, I got around and put mine on the layout. Have photos of the work and they will be somewhere in the following pages.

–Phil

## FROM THE SUPERINTENDENT'S DESK

BY DEAN LIPPINCOTT

Hello to my fellow model railroaders,

Well here we are again. Covid-19 is still here and I'm not so sure it's going to leave quietly. I sent out a survey a few days ago to see how you all feel about getting together again. Responses are still coming in and will have another mass email soon with a decision based on the results. Our ZOOM meetings have been very successful and well, kinda fun. Although the attendance at the ZOOM meetings has been OK (12-19 attendees) I wish we could get more of you to sign up and attend. More on that later this week. It will be coming via email.

In case you haven't heard, I officially retired April 22nd. I've had no problem making the transition from work to slave boy to my wife Renee. Actually it's been fun helping install an irrigation system for her gardens, front and back. I have had no problems keeping busy.

### TRAILS, RAILS, & TAILS

is published bi-monthly.

It is sent to members of the  
Chisholm Trail Division of  
NMRA

#### DIRECTOR

Philip Aylward

[aylward1@cox.net](mailto:aylward1@cox.net)

#### SUPERINTENDENT

Dean Lippincott

[dean.lippincott@gmail.com](mailto:dean.lippincott@gmail.com)

#### ASSISTANT SUPERINTENDENT

Ron Werak

[rwerak@dosks.com](mailto:rwerak@dosks.com)

#### PAST SUPERINTENDENT

Rob Neises

[robby\\_nmra@yahoo.com](mailto:robby_nmra@yahoo.com)

#### PAYMASTER/TREASURER

Gene Bowers

[gene9366@icloud.com](mailto:gene9366@icloud.com)

#### CLERK/SECRETARY

Randy Stucky

[rita.stucky@wesleymc.com](mailto:rita.stucky@wesleymc.com)

#### WEBMASTER

[http://ctd-mcor-nmra.tripod.com/  
ctd-mcor-nmra.html](http://ctd-mcor-nmra.tripod.com/ctd-mcor-nmra.html)

Rob Neises

As some of you know, my 41 year old son Matthew has taken an intense interest in model railroading. He hasn't started a railroad yet but has kept himself busy studying DCC, Sound, and JMRI. He's been buying new and used DC locomotives at his local train store and on Ebay, tricking them out with new motors, DCC, some with sound, LED lighting and new paint with decalling. He can then control them with his cell phone and/or tablet. He called a week or so ago and said that he, Stef. and the kids are coming to visit over the 4th weekend and have track ready to go. So Renee tells me to get busy in the basement

and get some bench work done and track laid. So that's what I've been working on for the past week or so. It's been a good time to be indoors and in the basement instead out in the blazing heat. I have a good chunk of benchwork finished and should have a couple of point to point (23-30 foot) runs ready to go. I'm excited!!!!

I've rambled enough so everyone please stay safe and be looking for my email later this week in regards to the July meeting on the 7th.

—Dean

## FROM THE EDITOR'S DESK

BY JIM MARLETT

This issue features Alan Aagaard's project of scratch building a work caboose for his On3 railroad. I'm excited to see it progressing since I had a little part in it. I saw some coffee stirring sticks in some store or the other. I thought they would make a good raw material for building a mine or mill. When I got home and measured them, they scaled out at about 4"x24" boards. Holy cow! They sure didn't look that big when they were hanging on the rack! I stored them for a while believing that I would think of something to use them for, but eventually I realized that some mistakes are just mistakes and they can't be fixed. I thought they would be much more useful in O scale where they would be 2x12s instead of the monsters they would be in HO scale. I found a sucker recipient in Alan and the coffee stirrers became his. He has put them to very good use along with others he had on hand and he has documented his work in this issue of TR&T.

This issue's calendar of events, like last issue's, is really just a guess. Things keep being cancelled and rescheduled so please check to be sure.

Not in the newsletter, but worth announcing again and again, is the new Facebook page just for Chisholm Trail Division members. Thanks to Len Wigton for setting it up. Using it does mean joining Facebook, which is a whole discussion unto itself, but I think there is a lot of potential here. Facebook is OK if you are careful about who your "friends" are. I know a lady who never accepts friend requests from people she works with. I joined Facebook to connect with family members. I let my friend acceptance get a little out of hand and I now have opinions from folks that I would have been spared had I been more choosy. On the other hand, there are groups that are quite valuable for model railroading or whatever your interests might be. And if you get tired of the nonsense your "friends" post, you can

always block them, unfriend them, or drop out altogether. So far, the Chisholm Trail page has been underutilized in my opinion, but you and I are the key to making it a useful tool. It's a great place to share how you did something or just to post a picture of your railroad or someone else's railroad. Our group page is private, so not just anyone can horn in or even see what is on the page. Folks who violate the rules and post way off topic can be booted. I would urge you to check it out. <https://www.facebook.com/groups/693114411520959>

This brings me to another topic, namely, my own railroad. After getting track laid and working well at my town of Elva, I had to contemplate what to do next. A couple of things came to mind, but they all involved working around my future helix. Since it had to fit into

an area where other tracks passed, it dawned on me that everything else would be easier to fit all the other things around the helix than it would be to try to fit the helix in after the obstacles were in place. So the helix was next, even though it wouldn't connect to anything until the railroad was further along. I've dubbed it the helix to nowhere.

So why did I imply a connection between my helix and Facebook? It's because I posted pictures of its construction on the Chisholm Trail Division Facebook page. I know I've probably ruined a perfectly good construction article for Trails, Rails & Tales, but it was fresh on my mind and I could do it in a timely fashion. As I said earlier, check it out. We all want to see what you're up to.

– Jim



The helix to nowhere is pretty much finished.  
Now I need to build somewhere!



## PHIL'S PONDS

PHOTOS BY PHIL AYLWARD

When Pam and Gorden MacPhail presented their clinic on building a pond, they asked us to share the results when we installed them on a layout. Phil Aylward found a spot on his layouts and provided before and after photos.

Before



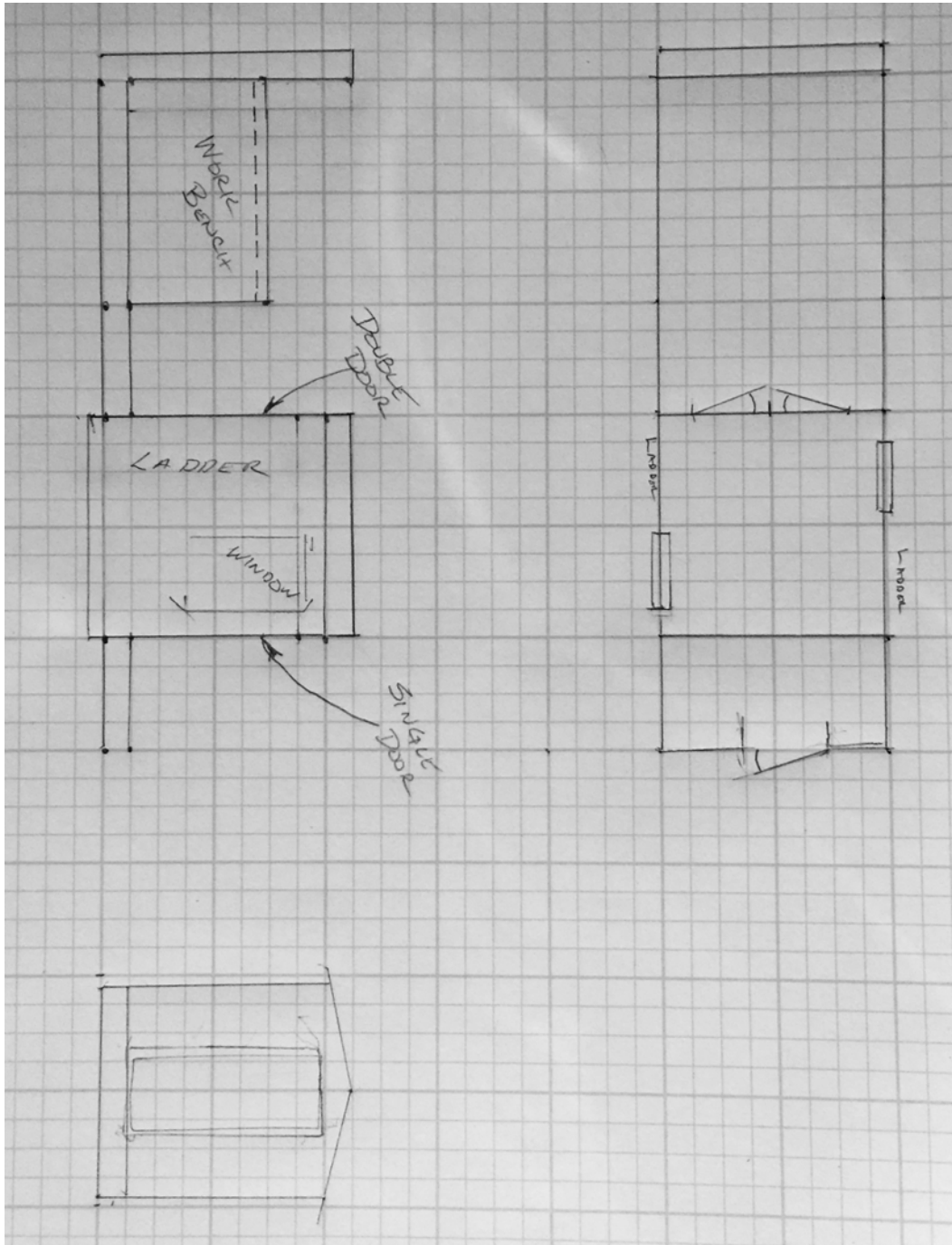
After



# ON30 SCRATCH BUILT WORK CABOOSE

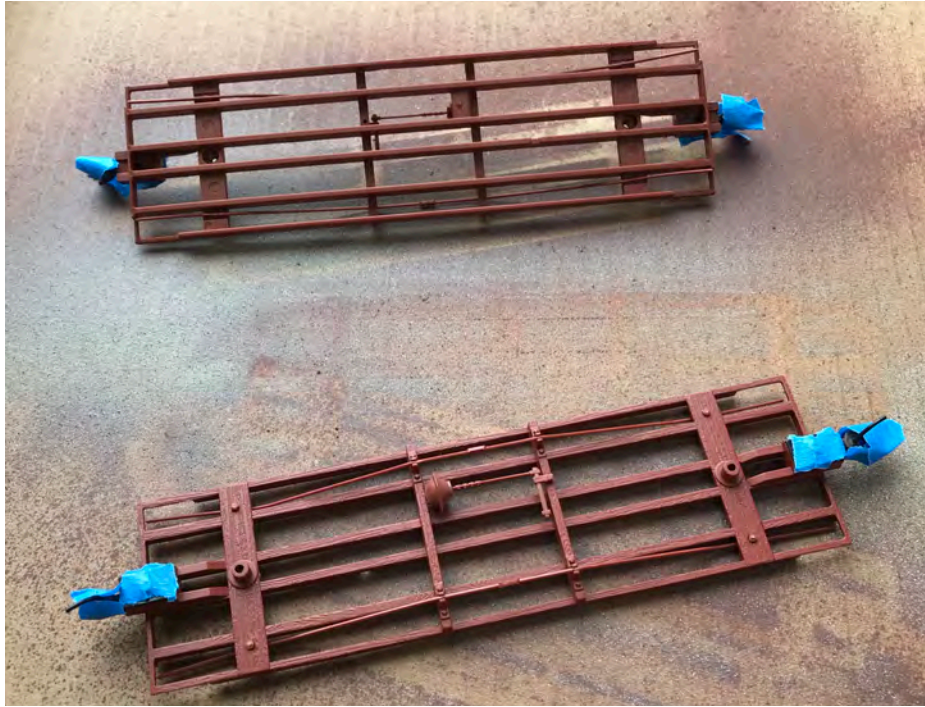
BY ALAN AAGAARD

(Editor's note: As promised last issue, here are more details about Alan Aagaard's social distancing project of a work caboose. It will be continued in the September-October issue of TR&T.)



...WORKING DRAWING...





**BEGAN WITH 24 FOOT BACHMANN #29906 UNDERFRAMES  
AND  
MASKED OFF THE COUPLERS**



**PRIMED WITH RUST-OLEUM'S MULTI-COLOR TEXTURE BROWN**

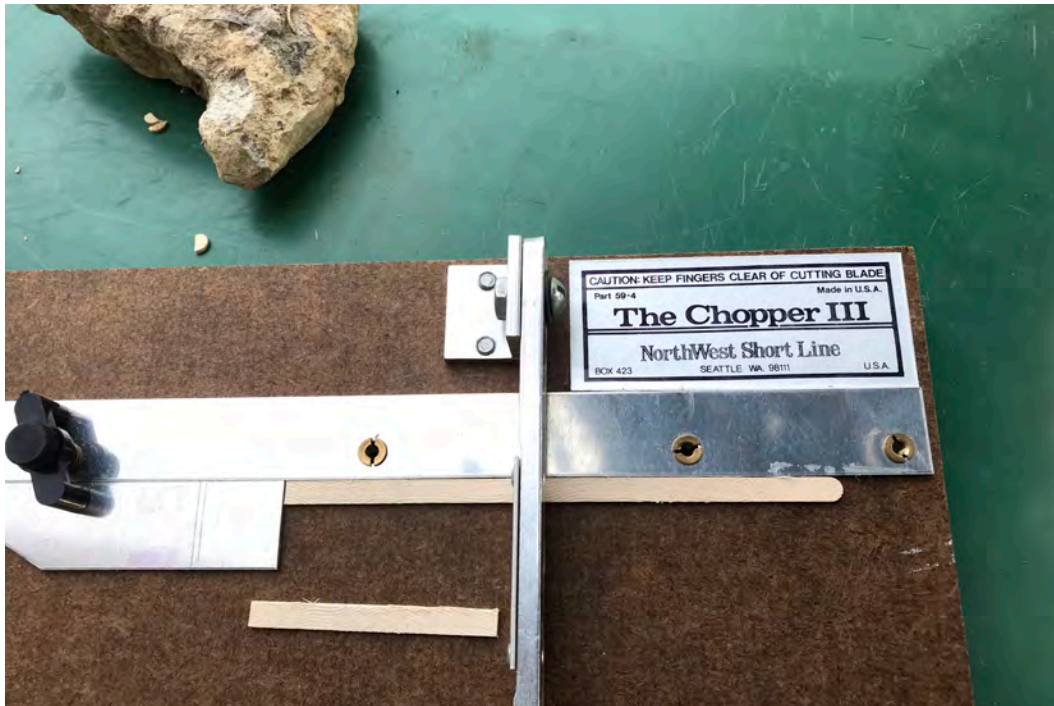


**COFFEE STIR STICKS - - - SCALE SIZE 2" X 12"**



**ENHANCED GRAIN USING A ZONA MICRO-SAW**





**CUTTING THEM TO LENGTH**



**DYES: LIGHT BROWN - LIGHT BLACK - DARK BLACK/CREOSOTE**





**LIGHT BROWN**



**LIGHT BLACK**



**DARK BLACK/CREOSOTE**



**SMALL WIRE BRUSH/DISTRESSER**

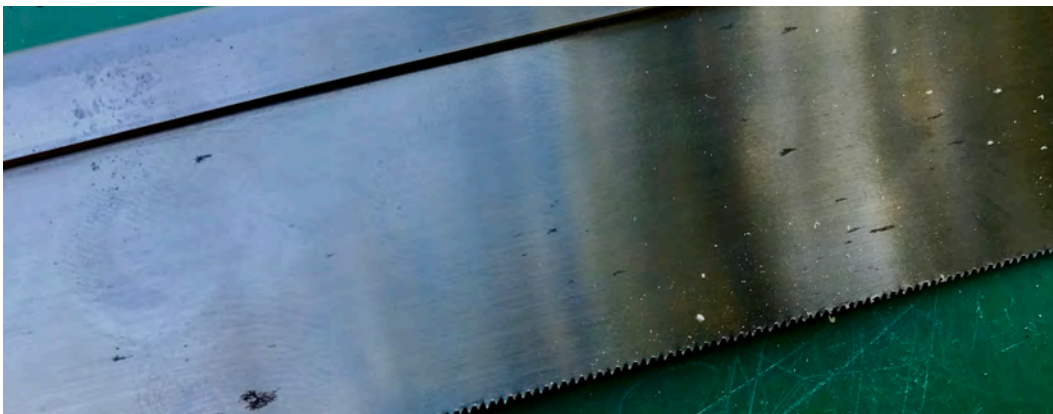




**OLD WIRE BRUSH (GRANDPA JOE'S)**



**MICRO-SAW/ZONA SAW**

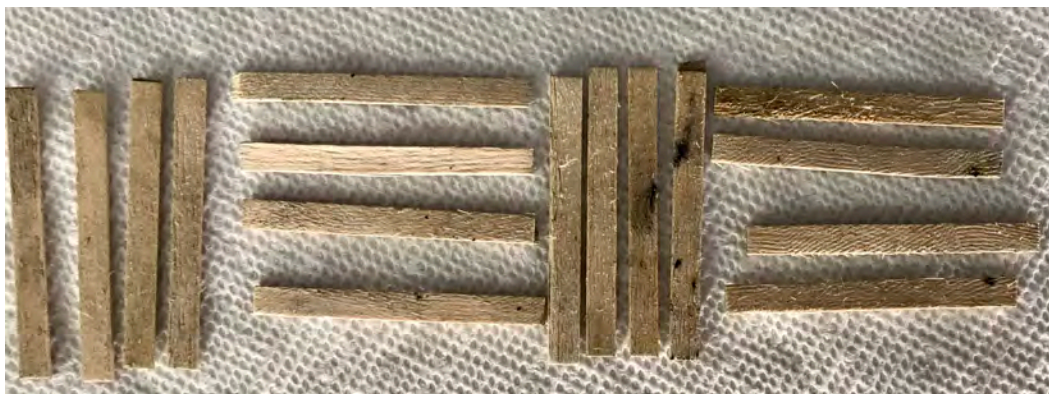


**CLOSE UP OF FINE TEETH**



In the following three pictures, the groups of boards, from left to right, also received the treatments listed below:

1. Grained & stained plus small wire brushed
2. Grained & stained
3. Grained & stained plus old wire brushed (Grandpa Joe's)
4. Grained & stained plus re-grained using Zona saw



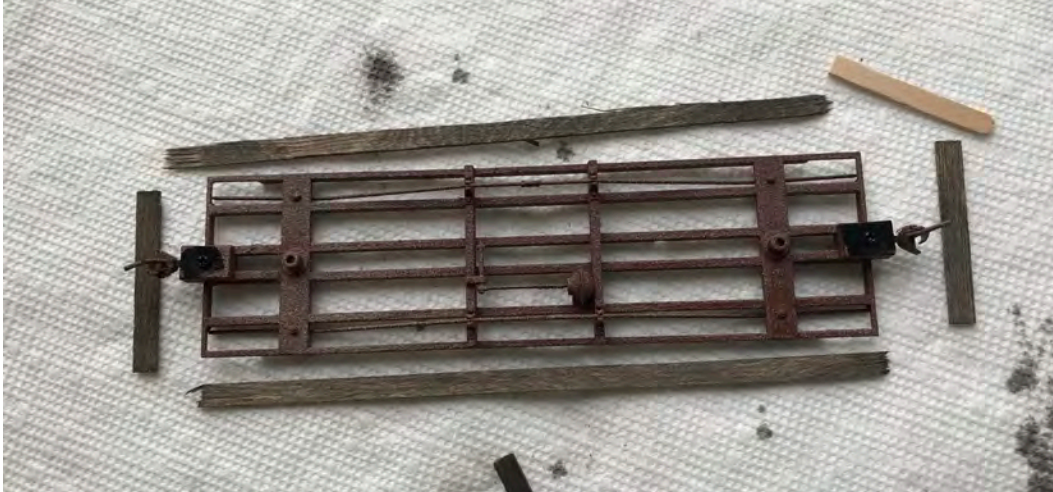
**LIGHT BLACK**



**DARK BLACK/CREOSOTE**



**LIGHT BROWN**



**COLORIZED THE SIDE PIECES USING BLACK INDIA INK  
AND 91% ISOPROPYL ALCOHOL  
THEN “TEST-FIT” THEM**



**USED CA (“SUPER-GLUE”) TO ADHERE DIS-SIMILAR MATERIALS**





**MINI BAR LAMPS WERE OVER-KILL  
AND FEARED OF APPLYING TOO MUCH PRESSURE**

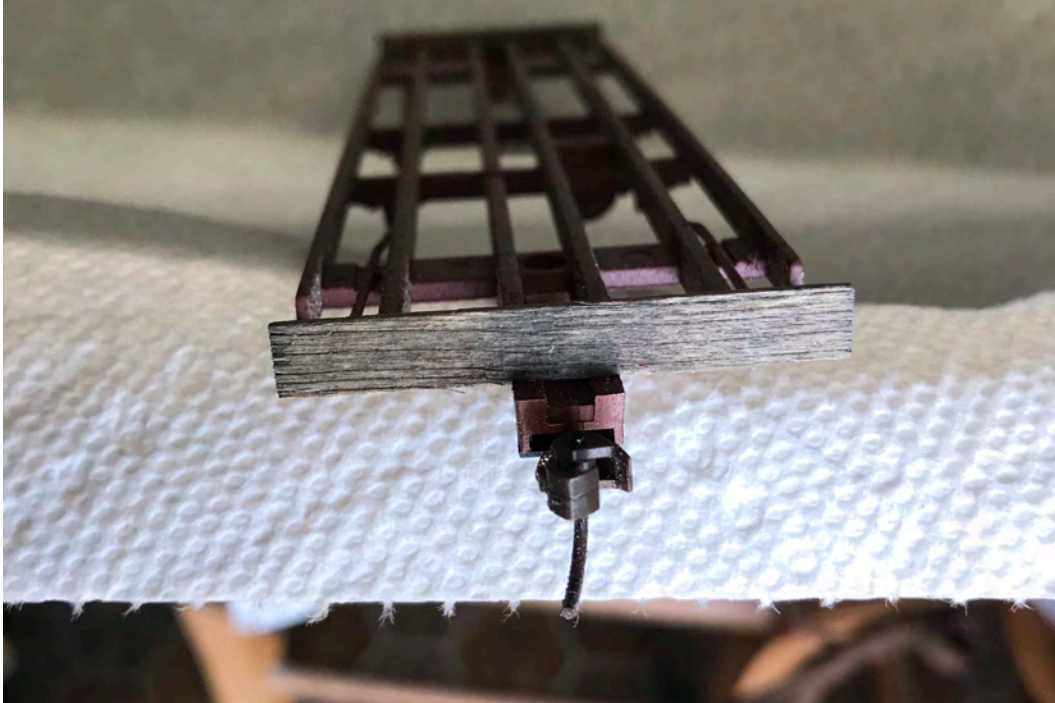


**I DECIDED TO TRY INVERTED WOODEN CLOTHES PINS AS CLAMPING  
DEVICES (THANKS LARRY GULICK)**





**INVERTED WOODEN CLOTHES PINS WORKED BETTER**



**END BOARDS ATTACHED SUCCESSFULLY**



**WITH THE ENDS IN PLACE THE SIDES  
WERE THEN CHECKED FOR SIZE AND  
ADDED**



**ADHERING THE SIDE BOARDS USING THE CLOTHES PINS**





**BIRCH PLYWOOD FOR THE BACKING  
(3/32" \* 12" \* 24") WAS EXPENSIVE,  
BUT HAS BEEN WELL WORTH THE COST**



**CUTTING PLYWOOD FOR "BACKING" SUPPORT  
OF THE ACTUAL CABOOSE, USING MY BANDSAW**





**STAINING TIMBERS TO BE USED  
TO SHEATH THE ACTUAL CABOOSE STRUCTURE.  
EXPERIMENTED USING VARIOUS COMBINATIONS OF MY THREE INITIAL  
ALCOHOL-SHOE DYE COMBINATIONS PREVIOUSLY DESCRIBED.**



**BEGINNING TO APPLY SIDE BOARDS TO PLYWOOD SUB-BASE  
(NOTICE THE PLYWOOD ON THE EXTREME LEFT)  
(PREVIOUSLY SEEN WHEN BEING CUT ON THE BANDSAW)  
(ALSO PLEASE NOTE THE GRANDT-LINE WINDOW...  
IT IS MERELY LAYING THERE NOT ADHERED, BUT USED FOR SPACING OF  
PLANKS AROUND THE OPENING)**



**SIDE PLANKING APPLIED TO BOTH SIDES OF THE CABOOSE STRUCTURE**



**SIDING APPLIED TO END OF THE STRUCTURE**





**SIDING APPLIED TO DOUBLE-DOORS  
(WHICH WILL FACE THE WORK-BENCHES PORTION OF THE WORK-CABOOSE)**





**ASSEMBLING THE CABOOSE STRUCTURE**



**...TAKING SHAPE**





**NEXT COMES THE "CORNER-TREATMENT"  
AND PLANKING OF THE WORK-BENCH AREA**





## CALENDAR OF EVENTS

### INCLUDES NON-NMRA EVENTS

### RECURRING EVENTS

Please check the listed recurring events to find out if they have been cancelled or not due to COVID-19.

**Chisholm Trail Division of NMRA Monthly Meeting.** Every first Tuesday of the month. Gather at 6:45PM. Olivet Baptist Church, 3440 W. 13th St., Wichita, KS (13th & High) <http://ctd-mcor-nmra.tripod.com/ctd-mcor-nmra.html>

**Please note:** Chisholm Trail Division is conducting Zoom meetings on the internet until further notice. Members will be apprised of the details and be receive meeting notices by email.

**Kansas Central Division of NMRA.** Every second Saturday of even numbered months at 1:00PM. Locations vary. Contact information is here: [http://www.mcor-nmra.org/Divisions/Kansas\\_Central\\_Division/](http://www.mcor-nmra.org/Divisions/Kansas_Central_Division/)

**Kansas Central Model Railroaders Business Meeting.** (Not the same as Kansas Central Division of NMRA) Every second Saturday from 11:00AM-Noon. 16 East 3rd Ave, Hutchinson, KS <http://www.kansascentralmodelrailroaders.org>

**Wichita Area Model Railroaders Luncheon.** Every second Thursday at 11:30AM. Spears Restaurant and Pie Shop, 4323 W. Maple, Wichita, KS

All events listed for 2020 in previous Trails, Rails, & Tails have been cancelled or rescheduled. Most recently, this includes the National Narrow Gauge Convention and the Railroad Prototype Modeler's Meet.

Any events listed below are subject to cancellation, but the organizers have not done so at press time. Check websites for updates.

### JULY 2020

**July 18 – Greater Tulsa Area Train Show.** Bixby Community Center, 211 N Cabaniss Ave, Bixby, OK. Sponsored by the Toy Train Operating Society Sooner Division. <http://www.ttos-soonerdiv.org/division-events.html>

### AUGUST 2020

**August 22 – OK Rail Fest.** Central Park, 700 S. Broadway Ave., Moore, OK. <https://www.cityofmoore.com/events/railfest>

### SEPTEMBER 2020

**September 26-27 – Wichita Toy Train Club Show.** Cessna Activity Center, 2744 George Washington Blvd, Wichita, KS. Saturday from 9AM-5PM. Sunday from 11AM-3PM. <http://www.wichitatomytrainmuseum.org/club-shows-1.html>

### OCTOBER 2020

**October 10 – Greater Tulsa Area Train Show.** Bixby Community Center, 211 N Cabaniss Ave, Bixby, OK. Sponsored by the Toy Train Operating Society Sooner Division. <http://www.ttos-soonerdiv.org/division-events.html>

**October 16-18 – OKC Model Railroad Expo.** Oklahoma State Fairgrounds, Oklahoma City, OK. <https://statefairparkokc.com/events/466/details>

## **FEBRUARY 2021**

### **February 6-7 – The Wichita Train Show &**

**Swap Meet.** Cessna Activity Center, 2744  
George Washington Blvd., Wichita, KS.  
Saturday from 9AM-5PM. Sunday from  
11AM-4PM. Sponsored in part by Chisholm  
Trail Division NMRA. [https://  
besttrainshow.com/](https://besttrainshow.com/)

**Please send me any events or  
meetings that you think should be  
included on this calendar.**

Jim Marlett

[jmarlett@cox.net](mailto:jmarlett@cox.net)