

Trails, Rails, & Tales



March-April 2022
Volume 8 • Number 2

The Official Newsletter of the *Chisholm Trail Division* of the **NMRA**

FROM THE DIRECTOR'S DESK

BY PHIL AYLWARD

Thank you to all that helped with the show.

It will be March or April before I can make a final report so I can make sure all the bills and checks are in. We do know that paid attendance was 848 on Saturday and 160 on Sunday.

A survey was conducted by Wayne Schluter to find out how people heard about the show. It was taken when registering for the train set give away. Here are the results:

Attended Previously – 165

Flyer in mail – 136

Show Flyer – 91

Internet – 63

No Comment – 39

Face Book – 34

Radio Ad – 19

Friends – 18

Saw A Sign – 15

Newspaper Ad – 10

Other, Cowcatcher – 2

Total responses – 592

Tony Unruh of Galva, KS won the train set.

I will have more next month.

–Phil

FROM THE SUPERINTENDENT'S DESK

BY DEAN LIPPINCOTT

Hello fellow modelers. Hope you are all doing well. For me, I'm getting off to kind of a rough start in this year 2022. I missed the first two meetings and both third Thursday lunch gatherings. I want to

TRAILS, RAILS, & TAILS

is published bi-monthly.

It is sent to members of the
Chisholm Trail Division of
NMRA

DIRECTOR

Philip Aylward
aylward1@cox.net

SUPERINTENDENT

Dean Lippincott
DLippP5a@gmail.com

ASSISTANT SUPERINTENDENT

Charles Monckton
monckton_66061@yahoo.com

PAYMASTER/TREASURER

Don Owens
owens2u@sbcglobal.net

CLERK/SECRETARY

Randy Stucky
ritastucky3@gmail.com

SYSTEMS ADMINISTRATORS

Len Wigton: 777@yahoo.com
Ann Wigton: 767@hotmail.com

NEWSLETTER EDITOR

Jim Marlett
jmarlett@cox.net

Submissions for publication are
strongly encouraged.

Logo Design by Alan Aagaard

thank Charles Mockton, our new Assistant Superintendent, for filling in for me at both meetings with very little notice. I owe you Charles. I will be at the March meeting to run us through our business meeting, God willing. I am also planning on being our program for the

evening. I will be giving more information about the program when I send out the meeting invitation on Sunday, so please be sure to read it. See you all soon.

—Dean

FROM THE EDITOR'S DESK

BY JIM MARLETT

I can't believe that March is upon us already! I guess I should. The February train show has come and gone and March comes next. The fact that I model HOn3 limits useful items I can find at train shows, but this year my haul of books was exceptional.

And speaking of the train show, Randy Stucky has written an article about it for this newsletter. Also inside is Dean Lippincott's third article about his building a model of the Hutchinson State Fair Ground's race track.

Here in my basement, work continues on the good ol' San Juan Southern narrow gauge. The Virginia Mill shown in the last Trails, Rails, & Tales has been completed. Now it needs to be put into a scene, which hasn't been started yet.

Two issues ago I shared how I was putting chicken wire on the layout to serve as scenery support. Well, I finally got around to slinging some plaster on it. My plan is to at least get the upper level covered before starting track work on the parts of the lower level that are yet to be built. I just didn't want to drip plaster on track that was already in place and working. Sure, I could cover it with plastic, but somehow those drops always seem to make it through. The material I'm using for that first hard shell layer is Ultracal-30 because I couldn't find Hydrocal at the time I bought it. It sets really, really hard so should do a fine job of supporting the rock castings and other stuff to be added later. It's a little sticky and clings to my fingers rather easily. I use pieces of newspaper

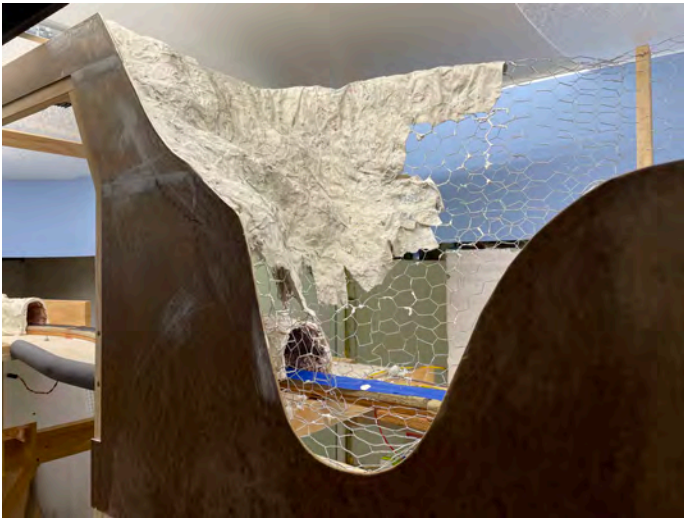
rather than paper towels to dip into the plaster and place on the chicken wire. You have to be careful not to let it tear apart in your hands, but it doesn't soak up the plaster as quickly as paper towels. Besides, newspaper is cheap.

I've been working my plastering around the cold weather because I've started dumping my water and plaster bits outside. I clogged up our plumbing with my last plastering foray and I didn't want to do that again. The lucky fact that I have a faucet in the basement right next to a stairway to the back yard makes it very convenient to haul out the water, but I don't want to make an ice slick out there nor do I want to be cold. I'm not sure why I started this in the middle of winter. I guess I'm just a poor planner.

— Jim



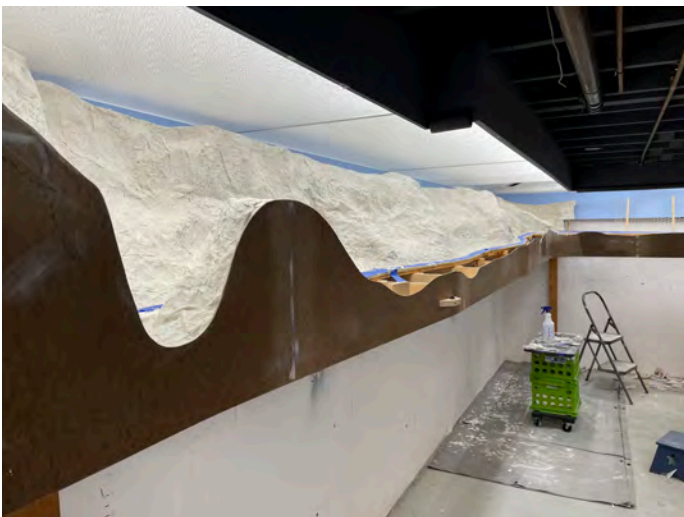
The Virginia Mill had a door that would have been 25 feet in the air unless I made a porch 25 feet in the air as well. I decided it needed a corrugated metal patch. I'm calling it done now.



Last edition of TR&T you saw bare chicken wire here. In this shot, it is being covered with a hard shell scenery layer of newspaper dipped in Ultracal-30 plaster. The tunnel portal proved a little tricky, but I got it. The mountains come really close to the acrylic lenses of the lighting system, so I moved them out of the way for now.



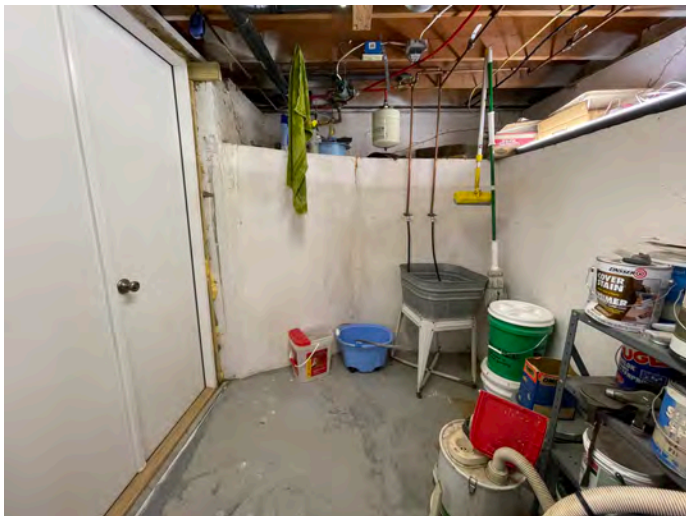
Once I got past the tunnel, I only worked on the area behind the track. My plan was to later fill the area in front of the track with extruded foam. I'm old school, but I thought I would try a technique you new school folks use. My attempts to make steep mountains in foam have so far been failures, but I thought rolling landscape would be easier.



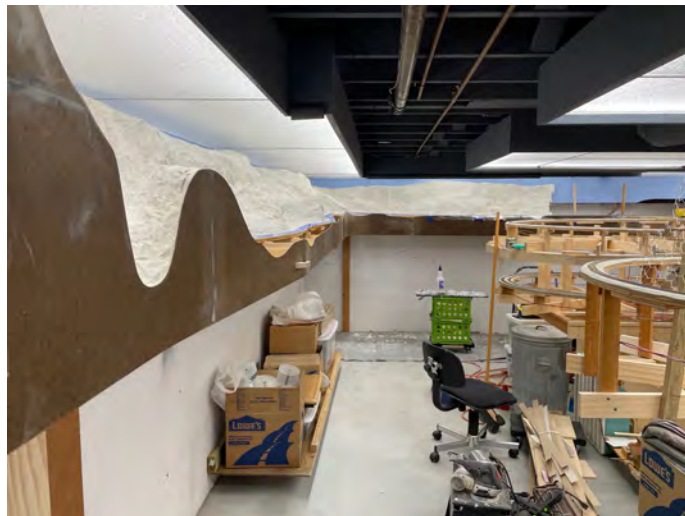
In a few days I had hard shell on about 20' of the layout. The weather turned cold at this point, so I stopped until it was warm enough to dump my plastery clean-up water outside again. I plugged up my plumbing with my last plaster project and I wasn't going to do that again. Thankfully, it has been a relatively warm winter. I should note somewhere that the chicken wire worked really well as a support.



I finally got to see the lumber branch head off into the mountains and disappear. You can't imagine how many times I pondered whether or not the effect would actually work. I think it worked fine. I've tried to build my railroad so that people from 5'2" to 6'2" can enjoy believable views. People shorter than 5'2" can stand on stools, but people taller than 6'2" may have to put up with "seeing behind the curtain." Tall people will be fine here.



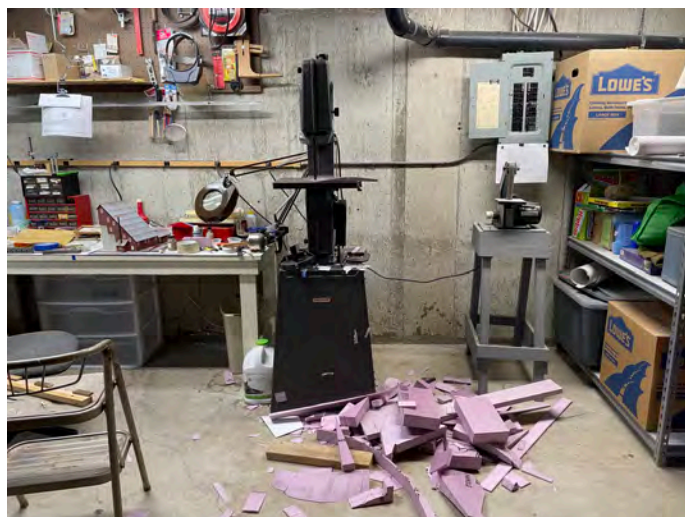
This is what allows me mix plaster and in my basement. The faucets were in the house when we moved in. The wash tub is my plaster mixing sink. A drain hose runs from there to the blue mop bucket. The bucket next to it is my cleaning bucket. The doors on the left lead directly up some stairs to the back yard where I can dump the plasterly water.



When it warmed up again, I was able to continue the hard shell work about as far as I thought I should before adding the mill scene. Luckily, all the junk I store under the benchwork is on rollers and can be easily moved around to keep from being covered with plaster drips. Even my little green plastering workstation is on rollers.



The next phase was filling in the space between the track and the fascia with extruded foam. I learned an awful lot about this process by doing it. Eventually it will be covered with some sort of pasty stuff, whether home made "ground goop" or a commercial product. But that can wait. For now I'll move on to another area of the railroad and make another plasterly mess.



One thing I did that I don't see done elsewhere is to rough cut the foam on a band saw. I realize not everyone has a band saw, but it works really well. No matter how you cut foam, there will be a mess to clean up. I'll have to figure out which of those scraps is useable somewhere else and which are genuine trash. Knowing myself, I'll probably save way too much.

THE BEST TRAIN SHOW IN WICHITA

BY RANDY STUCKY, PHOTOS BY JIM MARLETT

Another edition of the Best Train Show in Wichita has a come and gone. To those who helped with the train show, a big thank you. We couldn't have done it without you!

The winners in the model contest room were:

Diesel Engines:

1st Place - Tim Peters

Freight Cars:

1st Place - Lloyd Hurst

2nd Place - Terry Ross

3rd Place - Terry Ross

Cabooses:

1st Place - Terry Ross

2nd Place - Tim Peters

3rd Place - Javen Schmucker

Tongue in Cheek:

1st Place - Randy Stucky

2nd Place - Randy Stucky

Structures:

1st Place - Alan Meinhodt

2nd Place - Dean Lippincott

3rd Place - James Hogben

Diorama:

1st Place - Dennis Howe

2nd Place - Dean Lippincott

3rd Place - Thomas Gerhard

Photos – Prototype:

1st Place - Terry Ross

2nd Place - Tim Peters

3rd Place - Terry Ross

Photos – Model:

1st Place - Terry Ross

2nd Place - Terry Ross

Favorite Train:

1st Place - Gary Thompson

2nd Place - Randy Stucky

3rd Place - Randy Stucky

Congratulations to Dennis House. He won the Best of Show with his diorama of a Western Kansas thunderstorm.

My thanks to Jim Marlett and Charles Moncton of their help with the model contest.

–Randy



THE CONTEST ROOM



AROUND THE SHOW



LANDSCAPING HARD TO REACH AREAS

BY TERRY ROSS

On my layout, there is an area I wanted to make into a rock wall with a rock ledge base. I could not reach this area without stretching out as far as I could reach and I was having trouble getting the rock molds to stick to the fascia board. My fascia board on my layout sticks up above the layout edge by 1/2". I created a special hanging piece of fiber board that would hang over the actual fascia, and had a flat 1 x 2 board at the top. I cut a groove in the 1 x 2 the same thickness as my fiber board fascia. This groove snapped over the 1/2" top of my fascia. Then I test fit the hanging fascia over the actual fascia to be sure it fit in the space allowed on the layout. It fit and was very solid, so I removed the hanging fascia, and laid it flat on my work table. With it being a flat surface it was easy to liquid nail the rock molds in place. After letting

the rock molds set up, I was then able to paint the rocks and apply fusion fiber to blend the rocks together with the flat surface. I then covered the top of the hanging fascia piece with rocks and fusion fiber to blend it in to the layout above the ledge. Now I attached the hanging fascia over the layout fascia and the rock ledge was in place. Then I cut a small piece of fiber board to fit the lower level of the rock ledge. On this board I finished the lower part of the rock wall with additional rocks, grass, bushes, weeds, and trees, to blend the hanging rock into the total scene. All of this work was done sitting at my work bench instead of throwing out my back leaning over the layout trying to reach this ledge.

– Terry





KANSAS STATE FAIRGROUND RACETRACK DIORAMA

PART 3 – “DIRT AND STRUCTURES” BY DEAN LIPPINCOTT

In Part 2, I had finished the base of the racetrack, sanding it smooth and was ready to add something to the track that resembles dirt. It just so happened that the Grand Nationals was coming to Hutchinson the coming weekend and test runs were taking place the Wednesday before. I decided to go over and take some more pictures. There were quite a few people in the stands and low and behold, I ran into my friend Warren Hardy. You might remember Mr. Hardy from part 1 as being the announcer for the Grand Nationals held at the KSF and retired manager of Wichita's 81 Speedway. I showed him some of my racetrack progress with pictures saved on my I-phone and he asked what I intended to use

for ground cover on the track. I told him I was thinking of digging and sifting some dirt from a dead spot in my backyard. He said “Hell no! You just go down there and get some dirt right off that 100 plus year old track and use it.” So I did and it worked out great. I also finished the infield with some of the same dirt, adding patches of grass and weeds. I used Google Earth, pictured below, as an aid to layout the infield on the diorama.

– Dean



Kansas State Fair
Fairground in Hutchinson, Kansas

SELLING MODEL RAILROADING AND NMRA

BY BOB NEILL

What is meant by selling? Someone could be selling an idea, a used car, insurance, a philosophy; money does not need to change hands. Someone could be selling friendship. How do game manufacturing people sell new or old games? How do politicians sell plans, ideas? Sometimes money gets exchanged, sometimes time is shared.

Personally, I enjoy showing kids of all ages my switching module. Indeed, I am selling a hobby (or a habit). The older kids seem to be less eager to try something new. Let's face it, anything new is expensive. The cost of getting started is always high, both in money and time, as well as learning new skills. These costs can be eased by friendship getting involved. If two people form a group, or "club," more can get done and sharing can ease the costs in both time and money. These days people seem more reluctant to get involved together and the current virus is not helping.

While working at Botanica, I often describe model railroading as having multiple interesting ways to enjoy playing around. To begin with there is model building, but some enjoy just(?) running trains already assembled. Some enjoy the challenge of operating a model like a real railroad. There is also the study of history and the mixing of time through displaying different models. Many people can tell the era of a scene by looking at the automobiles rather than the locomotives. (When and why was the warbonnet painted yellow?) Always there is a challenge with electrical projects, from track power, to lighting, as well as sound and computer control. As for

model building, we have the choice of mixing many types of models from different time eras. I think it was about ten years ago we had a Ford tri-motor fly over Wichita and currently we have a B-29. A layout can include a seaport with ships of different size or type. What is your interest? A question I enjoy asking young visitors is "Would you like to put a movie scene being filmed on your train layout? What kind of scene would you like – modern, future, or from the past? Or a mix of time like Cowboys and Aliens?"

When showing the switching module, I often say that the NMRA offers many things including information on real railroads as well as a challenge to become a better model builder. My current problem with becoming a better model builder is understanding the requirements for the different types of models, as well as where and when to enter something for judging. Like the game of golf, the number of people on the course does not matter, the contest is between one person and himself. Beside model building, NMRA challenges each of us to do (work) different jobs to attain the glory a person can nail to his wall, a certificate. Indeed, the glory is "I did it"!

At one time I wrote to national NMRA about using a system like the boy scout merit badges or military ribbons which are worn on their uniforms. It would be something people could wear to display their accomplishments in public rather than only at home. It would allow those seeking help to find someone to ask. And most importantly, it would help sell model railroading.

–Bob

WHO IS IT?

Who is this
Chisholm Trail Division
model railroader shown in
his formative years?



The answer will be in the next
issue of Trails, Rails, & Tales.

LAST RIDE

We were saddened to learn of the passing of Don Hazen in January. Don was an active member of Chisholm Trail Division, the Kansas Central Model Railroad Club in Hutchinson, and in the

Mid Kansas Narrow Gauge Group. Even when his mobility prevented him from attending meetings, he was an enthusiastic participant and contributor in Zoom meetings. He will certainly be missed.

CALENDAR OF EVENTS

INCLUDES NON-NMRA EVENTS

RECURRING EVENTS

Chisholm Trail Division of NMRA Monthly Meeting. Every first Tuesday of the month. Gather at 6:45PM. Olivet Baptist Church, 3440 W. 13th St., Wichita, KS (13th & High) http://www.mcor-nmra.org/Divisions/Chisholm_Trail_Division/

Kansas Central Division of NMRA. Every second Saturday of even numbered months at 1:00PM. Locations vary. Contact information is here: http://www.mcor-nmra.org/Divisions/Kansas_Central_Division/

Kansas Central Model Railroaders Business Meeting. (Not the same as Kansas Central Division of NMRA) Every second Saturday from 11:00AM-Noon. 16 East 3rd Ave, Hutchinson, KS <http://www.kansascentralmodelrailroaders.org>

Wichita Area Model Railroaders Luncheon. Every second Thursday at 11:30AM. Spears Restaurant and Pie Shop, 4323 W. Maple, Wichita, KS

SCHEDULED EVENTS

MARCH 2022

March 12 & 13 – Garden City Model Train Show. Finney County Fairgrounds, 601 Lake Ave, Garden City, KS. Sponsored by Boot Hill Model Railroad Club. Saturday 9AM-5PM. Sunday 10AM-4PM. <https://www.facebook.com/search/top?q=boot%20hill%20model%20railroad%20club>

APRIL 2022

April 23 – Arkansas City Train Show. Agri-Business Building, 712 W Washington, Arkansas City, KS. Saturday 9AM-4PM. <http://www.wichitatoytrainmuseum.org/club-shows-1.html>

April 30-May 1 – Herington Railroad Days. Herington Community Building, 810 S. Broadway, Herington, KS. Saturday 10AM-Sunday 3PM. https://m.facebook.com/HeringtonRailroadDays/events/?ref=page_internal&mt_nav=0

MAY 2022

May 7 – Watermelon Campbell Memorial Open House and Train Show. Railroad Museum of Oklahoma, 702 N. Washington, Enid, OK. 9AM-3PM. <https://www.facebook.com/RailroadMuseumofOklahoma/>

JUNE 2022

June 4-5 – Center of the Nation Model Railroad Expo. Kansas State Fairgrounds, Pride of Kansas Building, Sunday 10AM-3PM, Hutchinson, KS. Saturday 9AM-5PM. <http://www.kansascentralmodelrailroaders.org/train-show.html>

AUGUST 2022

August 6 – Turkey Creek Division Train Show. Lenexa Community Center, 13420 Oak Street, Lenexa, KS. Saturday 8AM-3PM. Layout Tours 3:30PM-8:30PM <http://tc-nmra.org/TrainShow.html>

August 7-13 – Gateway 2022, The NMRA National Convention. Marriott Grand, 800 Washington Ave, Saint Louis, MO. Saturday 9AM-3PM. https://www.eventsquid.com/event.cfm?preview&event_id=13724

August 12-14 – National Train Show. The Gateway Convention Center, 1 Gateway Drive, Collinsville, IL (St Louis area). <https://www.nationaltrainshow.org/2022/ntsstlouis.html>

SEPTEMBER 2022

September 1-4 – National Narrow Gauge Convention. Hotel Murano, Tacoma, WA. <https://www.seattlenngc.com/>

FEBRUARY 2023

February 4-5 – The Best Train Show in Wichita, KS. Cessna Activity Center, 2744 George Washington Blvd., Wichita, KS. Saturday 9AM-5PM, Sunday 11AM-4PM

Please send me information about any events or meetings you think should be included on this calendar.

Jim Marlett

jmarlett@cox.net