



The

# Main Line



December 2020

National Model Railroad Association

Mid-Continent Region

The Monthly publication of the **Western Kansas Division**



On the Cover:

Just one of the fantastic layouts you can visit and perhaps perform operations is the stunning Sn3 "Pandora & San Miguel Rwy" in the home of **MMR** Kenneth Ehlers. This is the view from ken's workshop area into the layout room towards the left.

Editor's Musings....Page 1

2021 Tulsa Union Convention....Page 4

WKR Up-Date....Page 7

Kenneth Ehlers' Sn3 "Pandora & San Miguel Rwy"....Page 13

You can register for free and receive Model Railroad Hobbyist Magazine each month in your e-mail box Just click on the link below:

<https://model-railroad-hobbyist.com/>



## Editor's Musings

I want to apologize for this issue being so late, just as I was getting ready to start on this issue, I had major computer issues requiring me to reset Windows to a previous setting and redownloading Office 365 among other things. I am thankful I keep saved files on external hard drives or I could have lost everything.

The COVID nightmare continues to take its toll with most of the Spring Train Shows having already been cancelled, now we can add to that growing list the Rocky Mountain Train Show in Denver. All I can do is stay safe and keep working on the WKR layout with detail upgrades for future shows, more on that later in the issue. I deeply miss seeing friends and acquaintances at shows, but if it means staying safe, it is a small price to pay in the long run.

We need to keep a positive attitude and work on our layouts as much as possible and attend ZOOM meetings if you are so equipped.



See Dave & Deb at the store in Deshler, or check-out their website by clicking on the link:

<https://www.springcreekmodeltrains.com/>







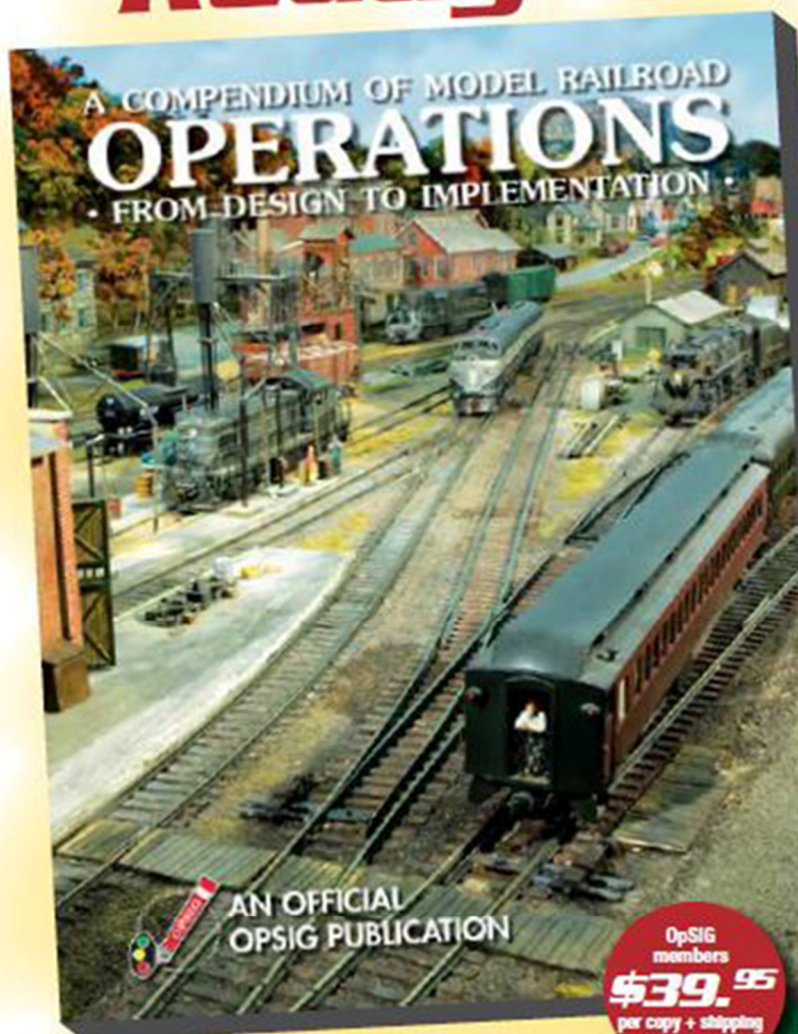
See what's happening in the **Mid-Continent Region** by clicking on the link below to view the Region's web page

<http://mcor-nmra.org/>





Dispatcher to OpSIG Publication No. 2, you're ...  
**Ready to Roll!**



All model railroaders, whether expert or beginner, will find a wealth of useful information in the OpSIG's second publication, **A Compendium of Model Railroad Operations - From Design to Implementation**. A complete guide to all things operations, our latest offering covers every aspect of prototype operations and how to apply them to your model railroad—from design and staffing to yards and paperwork, from communications and signals to dispatching and car forwarding—in 310 full-color pages. Written by ten of your fellow modelers and professionals, **The Compendium** contains more than 350 photos, 120 illustrations, and countless tips, pointers, suggestions, and prototype information to help guide you on your journey. A must for any modeler interested in prototype operations, add it to your library today!

OpSIG  
members  
**\$39.95**  
 per copy + shipping

Non-  
members  
**\$49.95**  
 per copy + shipping

Shipping: US (\$8)  
 Canada/Mexico (\$21)  
 Overseas (\$28)

For shipping rates on multiple books, as well as better international shipping, please contact Steve Benezra.

**To Order:** Please mail a check or money order, payable to OpSIG, with number of copies and your mailing address, phone number, and e-mail to:

Steve Benezra  
 2737 Thistle Trail  
 Hillsborough, NC 27278-9302  
 Opsig.editor@gmail.com

For Paypal orders, please add \$1 to the cost of the book and send to [OPERSIG@yahoo.com](mailto:OPERSIG@yahoo.com). Provide your mailing address and telephone number in the subject box.

The OpSIG is a 501(c)3 non-profit corporation. For information on how to join the OpSIG, please visit [www.opsig.org](http://www.opsig.org).





# 2021 TULSA UNION CONVENTION

Start making plans for **June 17-18-19-20** of 2021 for the  
Tulsa Union Convention in Tulsa, Oklahoma

A first-time collaboration between the **Lone Star Region**, **Mid-Continent Region**, and the **Indian Nations Division** of the **National Model Railroad Association**. We are particularly excited for members of both regions to have the opportunity to meet outstanding model railroaders from another region and learn from featured clinicians from each Region.



The expanding website will provide information for the convention activities including clinics, contests, layout tours, operating sessions, and non-rail activities.

Website Link: <http://www.2021tulsaunion.com/>





Please be sure to check out both the Registration page and the Hotel pages for information on how to register for each.

Take advantage of the early registration by March 1st, 2021 and pay only \$60.00 for Attendees. After, the Attendee fee is \$75.00. With Non-Rail only \$30.00 anytime.

**Clinics!** We will have a range of clinics during the convention, from model building tips to prototype history. We already have a solid list of experienced and well-known Clinicians, preparing some great Clinics for your enjoyment and learning.

**Contests!** Bring your models, bring your photos, show off your work in the Contest Room.

### **Layout Tours and Operating Sessions!**

Various model railroads will be open for visits during the convention. Visit the web site to see each railroad's page, read the details and see a photo tour of the layout. Operating sessions will be available, details will be available soon.

Check back often for updates as the date gets closer. We look forward to seeing you in June of 2021. Ken Ehlers, Co-Chairman, Mid-Continent Region / Indian Nations Division



# MY LAYOUT:



**WHAT I  
WANT**



**WHAT I  
THINK I  
HAVE**



**SO FAR  
SO GOOD**



You can view the latest videos of the [Western Kansas Division](#) on my personal **YouTube** page Robert Simmons. I have recently rediscovered the passwords to the Western Kansas Division page as well. For now, click on the link below:

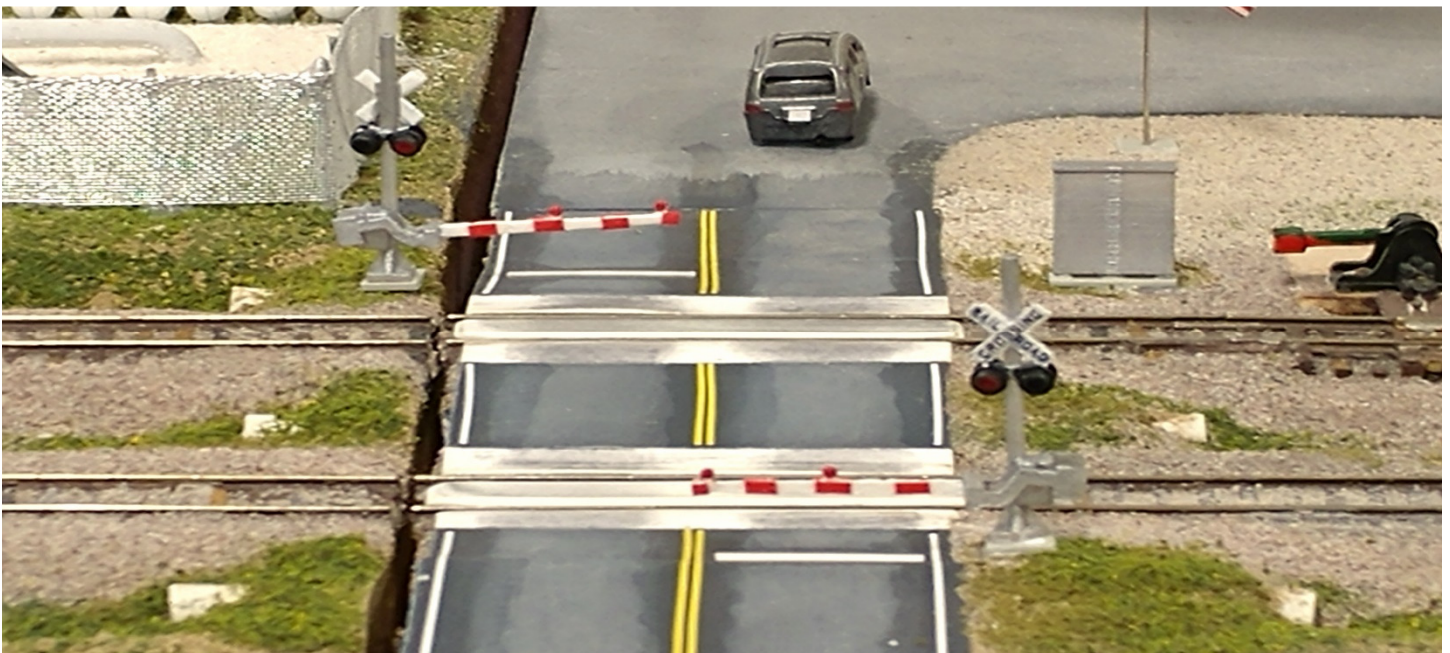
<https://www.youtube.com/channel/UC9EPv8cQ04rRGAYts->



# WKR Up-Date



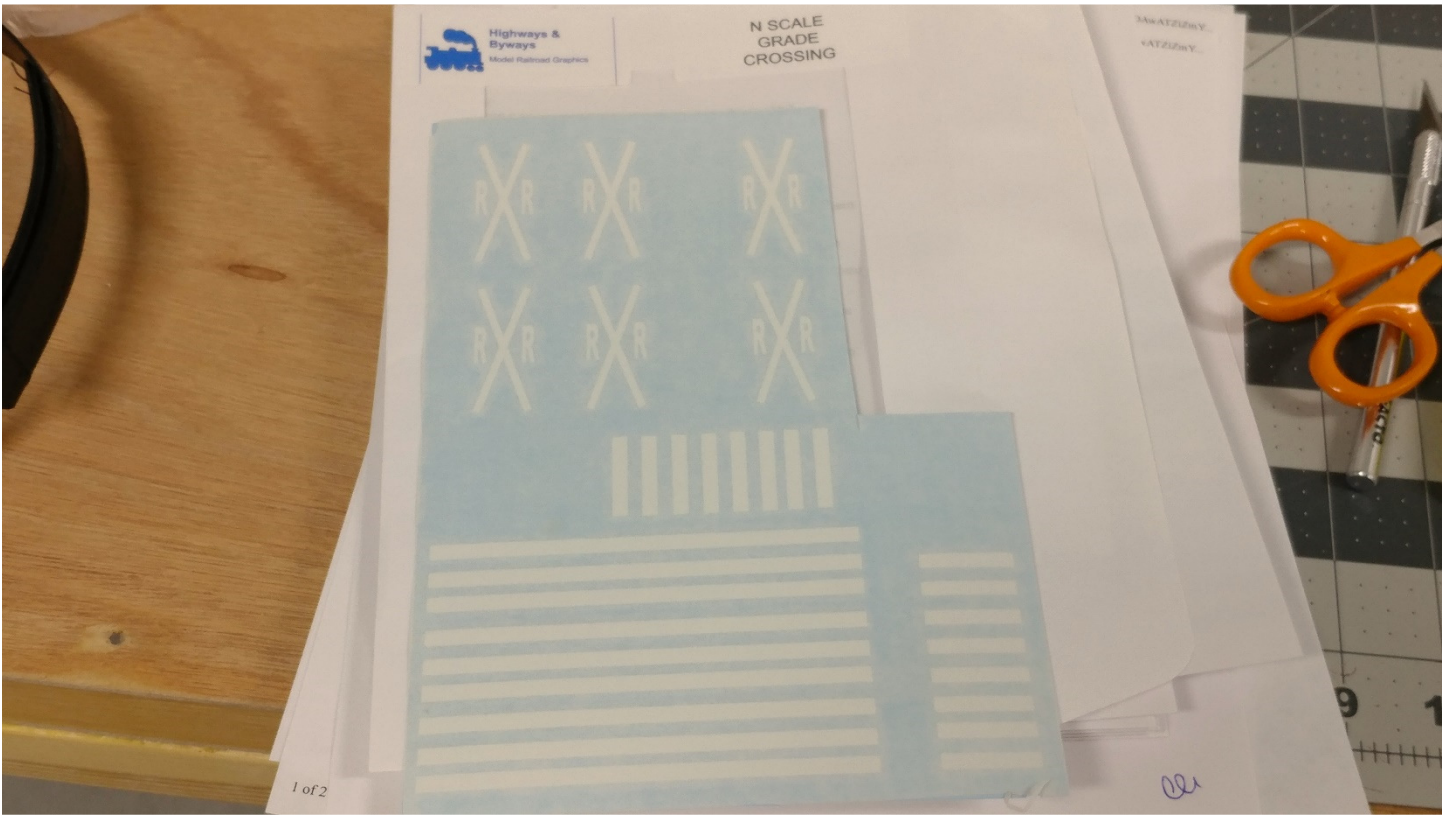
In late November, the WKR took ownership of a couple of new cabooses manufactured at the Bluford Shops. In reality, this style was the last the MoPac purchased from outside shops as the next series were the much smaller (transfer style) that were produced in the MoPac shops. Bluford created a fine N-scale model complete with metal wheel sets. In this photo I had painted the wheels and couplers "rust" color, otherwise this is right out of the box.



In last month's issue, the WKR Detail Crew had just completed adding grade crossing signals on all grade crossings on the layout. It was posted on Facebook with the notation that pavement markings would be the next step. One of the comments pointed me in the direction of a company "[Highways and Byways](#)" in Houston, Texas. It was just what the Doctor ordered...



# WKR Up-Date

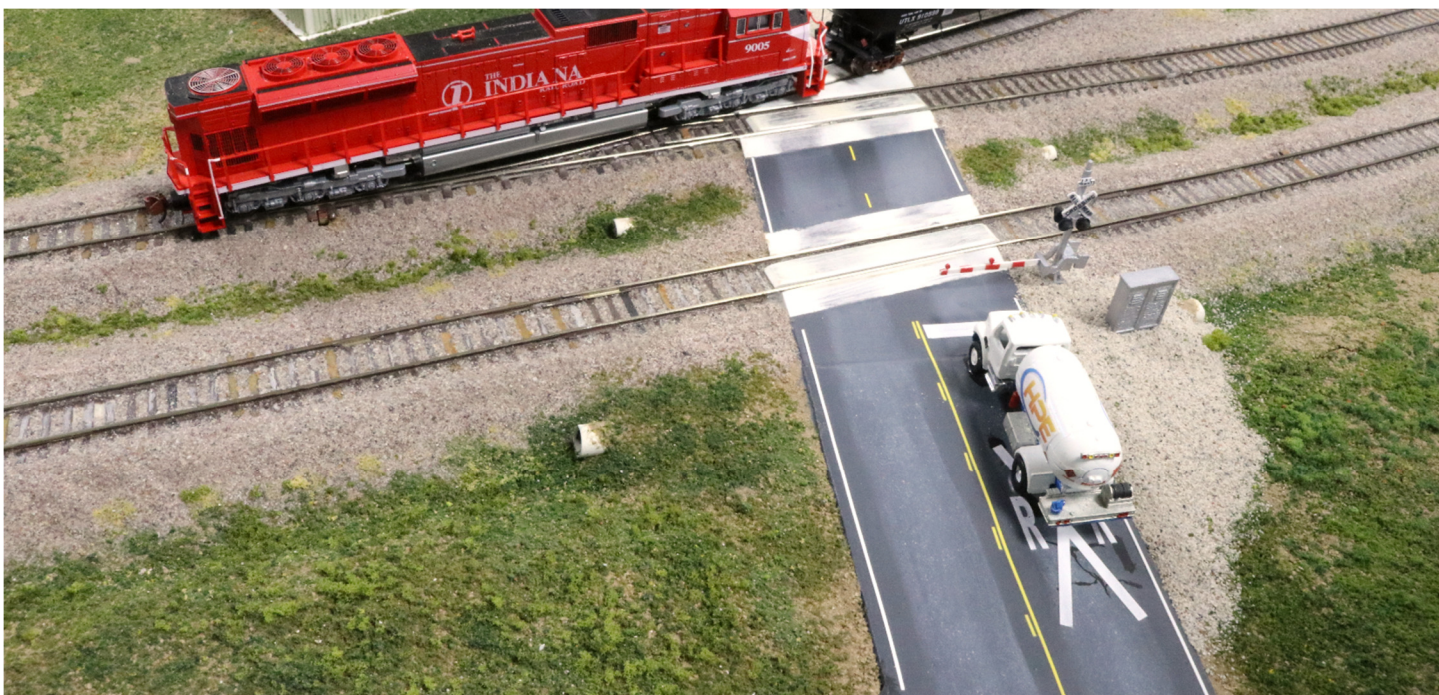


"Highways and Byways Model Railroad Graphics" offers thin, vinyl, markings for roads, grade crossings, and parking lots. They are similar to dry transfer graphics, but much easier to work with. As you can see, I have already cut out two grade crossing markings. Here is the link to their website where you can buy direct or use one of their dealers: <https://highwaysnbyways.net/> Here are some of the new markings on the WKR N-scale layout....





# WKR Up-Date





# WKR Up-Date





# WKR Up-Date







# 2021 TULSA UNION CONVENTION



A first-time collaboration between the Lone Star Region, Mid-Continent Region, and the Indian Nations Division of the National Model Railroad Association.

make plans for June 17-18-19-20



This Summer, a lot of fun is waiting for you in Tulsa, The Host Division (Indian Nations) has a great line-up of activities including model contests, clinics, non-rail sight-seeing, and of course layouts! Fifteen home layouts (so far) will be open for tours and operating sessions. You can check the convention website for days for the tours and for the operating sessions. The layouts range from N-scale to HO, Hon3, and Sn3.

Click on the link to go to the Convention website: <http://www.2021tulsaunion.com/>

Speaking of Sn3, the feature layout this month is in the home of Master Model Railroader Kenneth Ehlers his ***"Pandora & San Miguel"***. The layout is dual level and the aisles meander through the room.





# 2021 TULSA UNION CONVENTION

Ken Ehlers's Sn3 *"Pandora & San Miguel"*





# 2021 TULSA UNION CONVENTION

Ken Ehlers's Sn3 *"Pandora & San Miguel"*

*"The Pandora & San Miguel"* depicts the Southwest Colorado Rio Grande Southern in September 1942 and includes that part of the railroad from Ridgway, Co. to Rico, CO.





# 2021 TULSA UNION CONVENTION

Ken Ehlers's Sn3 *"Pandora & San Miguel"*



Back in 2017 I had the honor of being one of the crew members who were able to operate this fantastic layout. The scenery is nearly floor to ceiling, with many interesting scenes and you get a true sense of being in Colorado.

The main line is 200-feet long with interchange with the Denver & Rio Grande Western at the town of Ridgway, CO. plus staging at both ends of the layout.





# 2021 TULSA UNION CONVENTION

Ken Ehlers's Sn3 *"Pandora & San Miguel"*





# 2021 TULSA UNION CONVENTION

Ken Ehlers's Sn3 *"Pandora & San Miguel"*





# 2021 TULSA UNION CONVENTION

Ken Ehlers's Sn3 *"Pandora & San Miguel"*

During the operating session, Ken told us how he traveled to the specific sites in Southwest Colorado and took lots of photos. As you can see below, Ken used actual photographs to make the photo backdrops on the lower level near the entry door.

The Operations are easy paced but busy with lots of switching. Helper locos are required on most freights. For added realism, when using a helper, the two locos are not consisted, but must be controlled separately from the dual controlled Digitrax throttles.





# 2021 TULSA UNION CONVENTION

Ken Ehlers's Sn3 *"Pandora & San Miguel"*





# 2021 TULSA UNION CONVENTION

Ken Ehlers's Sn3 *"Pandora & San Miguel"*





# 2021 TULSA UNION CONVENTION

Ken Ehlers's Sn3 *"Pandora & San Miguel"*





# 2021 TULSA UNION CONVENTION

Ken Ehlers's Sn3 *"Pandora & San Miguel"*





# 2021 TULSA UNION CONVENTION

Ken Ehlers's Sn3 *"Pandora & San Miguel"*

I just happened to find this on Face Book.....



BACK ON THE FARM:

## THIS DAY IN HISTORY

The Galloping Goose #3 is introduced this day in 1931, beginning its years of service on the rails of Colorado.

December 2, 1931, marked the introduction of the Galloping Goose #3 as it began its years of service on the rails of Colorado. Large trains were too costly to run during the Great Depression, so Colorado's Goose trains were made to be frugal substitutes for the Rio Grande Southern. The custom-built, narrow-gauge railroad engine was constructed from a Pierce-Arrow 1926 body and a '33' engine with 39 horsepower at the cost of \$2,586.18. It weighed 14,800 pounds, measured 43 feet on three trucks, and had a boxcar in the back for freight. In 1946, a military surplus Wayne Bus body replaced the Pierce-Arrow car body, and it received a GMC 361 engine. Built in Ridgeway, Colorado, Goose #3 ran from 1931 to 1949 as a mail and passenger car running between Ridgeway and Durango until the cancelation of the railroad's mail contract. To cover expenses, several of the Rio Grande Southern Geese became tourist cars, and windows were cut into the freight compartment. Goose #3 was purchased from the Rio Grande Southern and came to Knott's in 1953, where it was given a renovation from its cow-catcher to its rear platform before being placed into service on the Ghost Town Line



# 2021 TULSA UNION CONVENTION

Ken Ehlers's Sn3 *"Pandora & San Miguel"*



I went back to the Western Kansas Division **You Tube** page, and I found one video I managed to get while operating my train on the *"Pandora & San Miguel"*, the link is below:

<https://www.youtube.com/watch?v=JMMiu1msPd8>



# 2021 TULSA UNION CONVENTION

Ken Ehlers's Sn3 *"Pandora & San Miguel"*



I want to thank Ken Ehler, MMR for allowing me into his home and operate this magnificent Sn3 layout. This is just one of the fifteen home layouts available for the Convention next Summer. I have personally taken part in the Indian Nations Division's "Layout Design & Operations Weekends" for several years, I've had a lot of fun and can testify that these people really know how to host an event.



Here is the link to the Convention website where you can register:

<http://www.2021tulsaunion.com/>





Wife said your ballast was delivered.



Visit the Face Book OPSIG page here:

<https://www.facebook.com/OperationsSIG>

Visit the Website of OPSIG here:

<https://www.opsig.org/>





**Our mission is to preserve and promote the heritage of the Missouri Pacific Railroad and its affiliates. This includes the Texas & Pacific, Chicago & Eastern Illinois, Kansas Oklahoma & Gulf, Alton & Southern and many other roads that were part of the MP family.**

**Please consider becoming a member and help us keep this history alive.**

Follow this link to the MPHS website: <http://www.mopac.org/>





You can follow the operating sessions and updates on the Western Kansas Rails (WKR) N-scale layout plus other related videos on the **Robert Simmons** **You Tube** page, just click on the link below:

[https://www.youtube.com/channel/UC9EPv8cQ04rRGAYts-734jw?view\\_as=subscriber](https://www.youtube.com/channel/UC9EPv8cQ04rRGAYts-734jw?view_as=subscriber)



# Date Book

As of this time, I can find no currently scheduled Train Shows in our area...

## March 2021

The 2021 Spring Rocky Mountain Train Show in Denver, Colorado has been cancelled.

The Rocky Mountain Division - TCA Board of Directors has elected to cancel the 2021 Spring Train Show in Denver, Colorado. After careful consultation regarding the health and safety of our members, exhibitors and guests, we have made the difficult decision to cancel the Spring Train show that was scheduled for March 6th and 7th, 2021.

## June 2021

17<sup>th</sup> – 20<sup>th</sup>

**Tulsa Union Convention (NMRA)**  
Embassy Suites Hotel

Tulsa, OK.



Follow the activities of the Mid-Continent Region on their **Face Book** page:

<https://www.facebook.com/groups/1851848998468077>



# *Merry Christmas*



*From the Western Kansas Division, NMRA*

## The *Main Line*

Publisher & Editor: Robert A. Simmons

The newsletter of the Western Kansas Division is published monthly for no charge by Robert A. Simmons, Division Superintendent / Director

Copyright 2020, by Robert A. Simmons, all rights reserved

If you have a change of e-mail address, or no longer wish to receive the newsletter, please contact Robert Simmons

[Trainman55@hotmail.com](mailto:Trainman55@hotmail.com) or P.O. Box 157 – Dodge City, KS. 67801 or call (620) 521-3591

Please send all inquiries, ideas, or submissions to: [trainman55@hotmail.com](mailto:trainman55@hotmail.com)