

The Main line



The monthly publication of the
Western Kansas Division
February 2024



On the Cover:

The refinery scene on the **Chisholm Trail Division**, NMRA HO-scale modular layout, on display during the McPherson Kansas Train Show 2024 January 13th and 14th.

Table of Contents:

Real Deal – Real train action in Southwest Kansas.....Page 7

The Rear View – a look back at the origins of the WKR layout.....Page 16

Oddballs – Designs that just didn't "catch on".....Page 24

McPherson Kansas Train Show 2024 coverage.....Page 28

Date Book – Upcoming Train Shows.....Page 43



Free-Mo is a modular scale railroading standard designed for individual modelers that specifies bench work, track work, scenery and digital control intended to *raise-the-bar* for scale modular railroading in general and, in this case, for **N scale** modular railroading.

The standard promotes, and even forces, prototypical appearance and operations by using a single or double tracked mainline running roughly through the middle of the

scenery resulting in prototypical point-to-point or loop-to-loop configurations and operation. These standards allow for module construction that is free form between the end-plates resulting in flexible and adaptable layout configurations to fit any available space.

Click here for the Free-moN website: <http://free-mon.net/>

For the Free-moN Facebook page, click here: <https://www.facebook.com/FreemoN.net>



Founded in 1984, **Union Pacific Historical Society** is an independent, non-profit organization dedicated to preserving and sharing the history of the Union Pacific Railroad. The Society has about 1,900 members, including Historians, railfans, employees, and modelers. The UPHS is a matchless source of accurate and in-depth material concerning historical operations, traffic, motive power, rolling stock and facilities of the Union Pacific and predecessor companies. Railroad employees, managers, and retirees are welcome.



The UPHS publishes *The Streamliner*, a professionally produced and beautifully illustrated quarterly journal featuring the finest work of historians and other experts on all aspects of Union Pacific Railroad operations, traffic, management, equipment, and facilities.

In addition to our journal, the UPHS publishes books relating Union Pacific's rich history of traffic, operations, motive power, and rolling stock. Our most recent book is Jeff Asay's *Union Pacific Northwest*, tracing the history of UP in Oregon, Washington, and Northern Idaho. We also have published a history of the early streamliner era 1934-1941 as well as a comprehensive series of prototype photo books of UP steam power.

We invite you to join the Union Pacific Historical Society! Join Union Pacific enthusiasts from all over the world by submitting your one-year membership application.

☐ **Regular membership** Both Youth and Regular memberships entitle one to receive four issues of our highly acclaimed quarterly magazine, *The Streamliner*, as well as discounts on selected products in the Company Store.

Click here for the UPHS website: <https://uphs.org/>

For the UPHS Facebook page, click here: <https://www.facebook.com/profile.php?id=100069786331658>



Introducing NMRax, the new virtual arm of the NMRA!

View 100's of hours of clinics, tours, presentations, and Q&A sessions conducted by the NMRax team and many member volunteers! Keep your eyes out for upcoming events in our "Calendar" and watch all of the past videos on the NMRA YouTube channel.

Introducing NMRax

Clinic Videos and more

NMRA members get discounts of up to 45% from over 40 companies. Isn't it time you joined?

[Click here for details](#)

Bear Creek Model RR
CatzPaw Innovations
Clever Models
CMR Products
Deepwoods Software
Deluxe Materials

Gatorfoam
Great Decals
Gren Frog Productions
HotWire Foam Factory
Jason's Brass Poles
K.I.S.S. Method
LAB Prod Productions

Logic Rail Tech.
Micro-Mark
Mine Mount Models
MinuteMan Models
Modelers Decals
Model RR Benchwrk
Model Train Catal.

Motrack Models
MRC
NScale Works
OK Engines
Old West Scenery
Ram Track
RR-CirKits

Rusty Stumps
Scale Model Plans
Scalecoat Paint
Scenery Solutions
Showcase Miniatures
Stepcraft
Team Track

N-Scale Archite
Train Show
Tichy Train Grp
Train Installati
TrainMaster TV
UGears
Unreal Details
USA Airbrush
WiFi Model RR

Partnership Program

Discounts for NMRA Members

**GETTING
STARTED**

IN MODEL RAILROADING

**BECOME A MEMBER
JOIN THE NMRA TODAY!**

DONATE TODAY
EVERY GIFT HELPS

Want to "test drive" the NMRA for a little while?

Sign up for our 9-month **Rail Pass trial membership** for only \$19.95! This includes 9 months of the *Digital NMRA Magazine*

The Rail Pass offer is good **in the U.S. only** and is for **new members** and those who have not been NMRA members for two years or more. Individuals can join at the Rail Pass rate **only once**. Rail Pass members can attend conventions and participate in contests but cannot hold office or vote in NMRA events. Membership will renew at the regular membership rate.

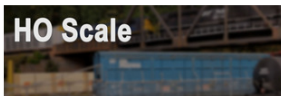
Click here for the NMRA website: <https://www.nmra.org/>



Midwest Model Railroad has two goals:

- 1) Make high-quality model trains easier to acquire and
- 2) Make our niche hobby more accessible to everyone.

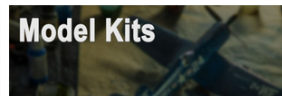
Operating since 2011, we've been able to do just that by keeping our operating costs low and passing on our savings to you. You will be hard pressed to find a model train shop more organized and affordable than us—which is especially significant considering the variety of model train supplies available and how quickly costs add up.



HO Scale



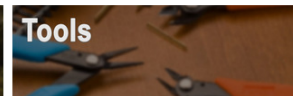
N Scale



Model Kits



Scenery



Tools

HO Scale

As the most popular scale, you'll find yourself spoiled for choice when you shop for HO scale trains. Midwest Model Railroad is your one-stop shop for HO trains and accessories so that you can build the railroad of your dreams.

N Scale

We provide a large selection of N scale trains for you to choose from and enjoy; after all, they're the second most popular scale worldwide. Call us today to ask about our N scale trains!

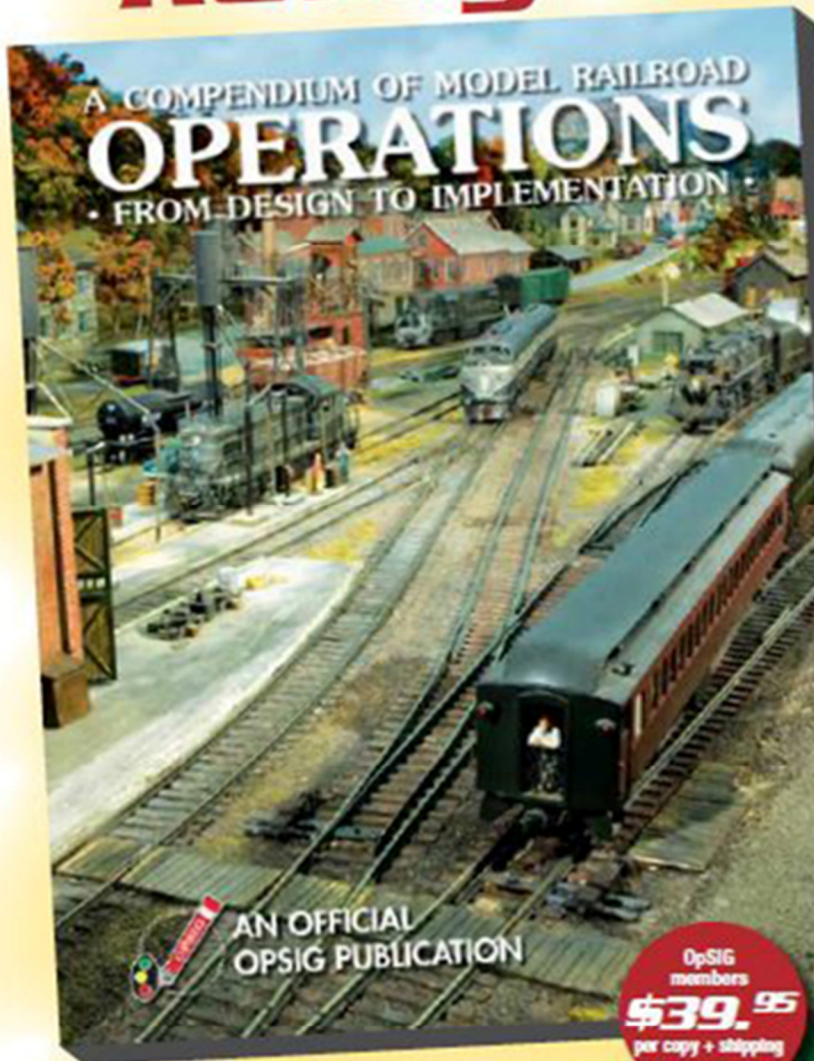
Click here for the Midwest Model Railroad website: <https://midwestmodelrr.com/>
 For the MMR Facebook page, click this link: <https://www.facebook.com/MidwestmodelRailroad>

**Excuse me, is Spring
coming soon?**



**I need to know when
my nuts will thaw out.**

Dispatcher to OpSIG Publication No. 2, you're ...
Ready to Roll!



All model railroaders, whether expert or beginner, will find a wealth of useful information in the OpSIG's second publication, **A Compendium of Model Railroad Operations - From Design To Implementation**. A complete guide to all things operations, our latest offering covers every aspect of prototype operations and how to apply them to your model railroad—from design and staffing to yards and paperwork, from communications and signals to dispatching and car forwarding—in 310 full-color pages. Written by ten of your fellow modelers and professionals, **The Compendium** contains more than 350 photos, 120 illustrations, and countless tips, pointers, suggestions, and prototype information to help guide you on your journey. A must for any modeler interested in prototype operations, add it to your library today!

OpSIG members
\$39.95
 per copy + shipping

Non-members
\$49.95
 per copy + shipping

Shipping: US (\$8)
 Canada/Mexico (\$21)
 Overseas (\$28)

For shipping rates on multiple books, as well as better international shipping, please contact Steve Benezra.

To Order: Please mail a check or money order, payable to OpSIG, with number of copies and your mailing address, phone number, and e-mail to:

Steve Benezra
 2737 Thistle Trail
 Hillsborough, NC 27278-9302
 Opsig.editor@gmail.com

For Paypal orders, please add \$1 to the cost of the book and send to OPERSIG@yahoo.com. Provide your mailing address and telephone number in the subject box.

The OpSIG is a 501(c)3 non-profit corporation. For information on how to join the OpSIG, please visit www.opsig.org.

Real Deal

©Jeff Black
Garden City, KS 08-17-19



Kelly Chopp Photo

The **Garden City Western Railway** is a railroad operating in the state of Kansas.

GCW was purchased by **Pioneer Railcorp** on April 29, 1999. The railroad operates primarily within Garden City, with the branches to Wolf and Shallow Water used mainly for car storage.

GCW was acquired by **Patriot Rail** after it purchased Pioneer Lines in August 2022. GCW interchanges with BNSF at Garden City.



PREX 801 was built in March of 1955 (That's older than me) by EMD as Illinois Central GP-9 9110. It was also known as Illinois Central Gulf 9110, Illinois Central 7907, MCTA 7907, and GCW 801. It was rebuilt to GP8 specifications by the IC.

A **GP8** is a four-axle diesel locomotive rebuilt by Illinois Central's Paducah shops using a General Motors Electro-Motive Division (EMD) GP7 or GP9 as a start. It is similar to the GP10 and GP11. A total of 111 units were rebuilt to "GP8" for the Illinois Central and Illinois Central Gulf.

Real Deal

Kelly Chopp Photo



Kelly Chopp, a retired engineer for the Garden City Western, served with the 801 for many years. In 2023, the 801 finally received some well-deserved new paint.



30-DAY FREE TRIAL



Unlock access to premium modeling and railroading videos, articles, and magazines for all train enthusiasts.

LEARN MORE




Digital Membership

Unlimited members get full access to our content library. Start your free trial today



BEGINNERS

MODEL RAILROADER

Getting Started in
Model Railroading: The
Beginner's Guide

LOCOMOTIVES

TRAINS MAGAZINE

Locomotive schemes:
Painted power worth
noting



Trains

**Model
Railroader**

**CLASSIC TOY
TRAINS**

Classic Trains

**Garden
RAILWAYS**



Click here for the Trains.com website: <https://www.trains.com/>

For the Trains.com Facebook page, click here: <https://www.facebook.com/KalmbachTrains>

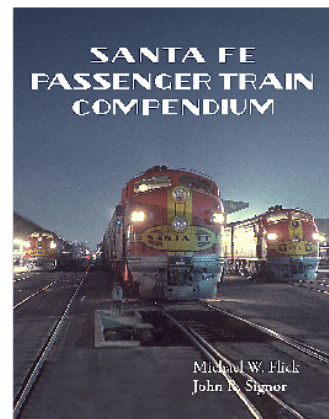


The Santa Fe Railway Historical and Modeling Society

To promote, stimulate, foster and encourage by all legal manner and means the gathering, cataloging, preserving and making available to the general public for viewing, education and research, actual documents, equipment, photographs of equipment or structures, and any other data available concerning the history and heritage of The Atchison, Topeka and Santa Fe Railway Company, Incorporated and such predecessor, partnership, subsidiary, or successor organizations of that Company as history may disclose. To advance the hobby of railroad history in general, and of The Atchison, Topeka and Santa Fe Railway Company, Incorporated in particular, wherever and whenever possible by publications, meetings and all things necessary or incident to these purposes.



The Society and its predecessors have been publishing information about the Santa Fe since 1969. The Society offers exceptional publications on the history and modeling of the Santa Fe. From its flagship quarterly magazine, *The Warbonnet*, to its comprehensive books on history, motive power, rolling stock and modeling, the Society is the definitive and authoritative source on all things Santa Fe.



2024 Annual Convention

The Grand Canyon – Third Section

June 28th to 30th, 2024 (extra fares on June 26th and 27th)

Albuquerque, NM

For the SFRHMS website, click here: <https://sfrhms.org/>

For the Facebook page of the SFRHMS, click here: <https://www.facebook.com/SFRHMS>



Robert Simmons

@robertsimmons6464 · 978 subscribers · 371 videos

This channel is about Model Railroading in general, and specifically the antics of the Weste... >

Customize channel

Manage videos



Current subscribers

978

+3 in last 28 days

Home Videos Shorts Community



McPherson, KS Train Show
2024 - Donnie Becker N-sca...

<https://www.youtube.com/watch?v=gYlnN2OE5kM>

<https://www.youtube.com/watch?v=vNDjnwLWAmg>



McPherson, KS. Train Show
2024 - Chisholm Trail...

108 views · 6 days ago



McPherson, KS Train Show
2024 - Wichita Toy Train Club

206 views · 7 days ago

<https://www.youtube.com/watch?v=t5SEZoTr9KM>

Click here for the **Western Kansas Division** **You**Tube page:

<https://www.youtube.com/channel/UC9EPv8cQ04rRGAYts-734jw>

The purpose of **NRail** is to promote N Scale model railroading in all forms, all standards wherever N Scale is present. NRail has been the voice of N Scale model railroading for over 45 years. Starting as NTRAK, it created the first national modular standard, provided the vehicle for N Scale to grow to the second most popular scale in North America, was the birthplace of T-TRAK and today is the home of N Scale model railroading. We welcome all N scalers.

Get ready for the National N Scale Convention

Start	Tuesday, June 18, 2024
End	Sunday, June 23, 2024
Location	Wind Creek Bethlehem, PA

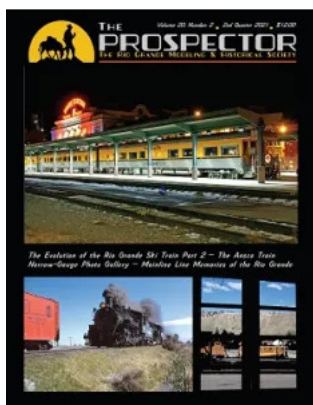


Click here for the N-Rail website: <https://nrail.org/>

For the Facebook page of N-Rail, click here: <https://www.facebook.com/NRail.org>

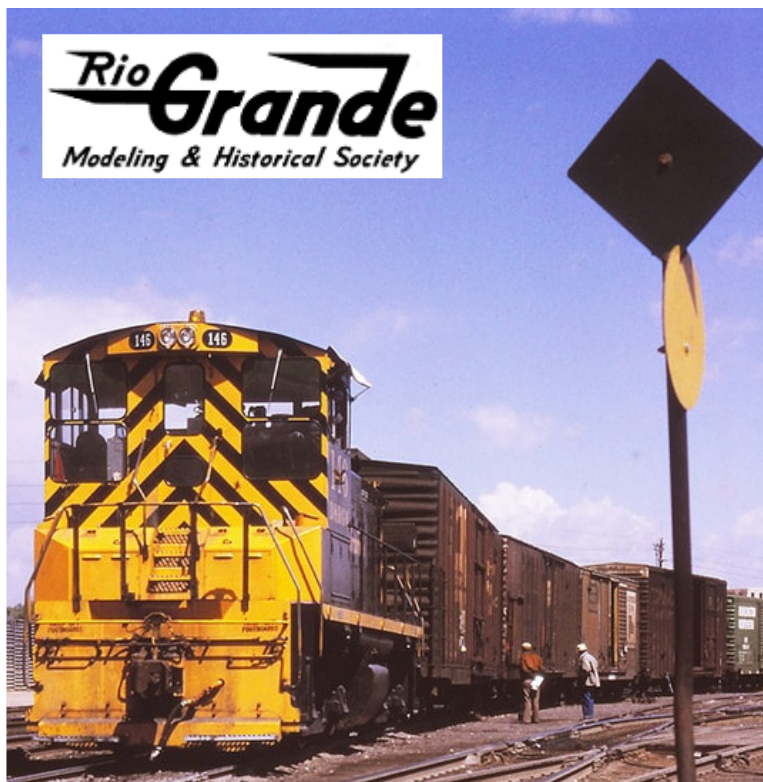
The **Rio Grande Modeling & Historical Society** is a group of enthusiasts who are interested in the history and modeling of the Denver & Rio Grande Western Railroad or its predecessors. Although the Denver & Rio Grande Western Railroad is now part of the vast Union Pacific system, it's a fascinating story we try to keep alive through the efforts of the Society to ensure that the memory of the railroad lives on.

The group publishes a magazine called *The Prospector*, which contains articles, photos, and drawings of the railroad and its equipment. The group also organizes conventions, supports model manufacturers, and produces data CDs for its members and the public.



Among the **RGM&HS** publications we publish *The Prospector*, our professionally produced and beautifully illustrated quarterly magazine featuring the finest work of historians and other experts on all aspects of Rio Grande Railroad.

We make available individual issues and volume sets of the magazine for purchase from our website—from the current issue to back issues of *The Prospector* over the past 20 years back to Volume 1 which was first published in 2002.



Join Us Today! Your membership includes:

- One year subscription to **The Prospector** (4 issues), the official quarterly magazine of the Society.
- A subscription to the Society's e-mail newsletter, the **Green Light**.
- Members-only emails with advance notice of Society events, programs, and offers.
- Special benefits and features in the Members-only section of the Society's website.

Click here for the RGM&HS website: <https://rgmhs.org/>

The Facebook page of the RGM&HS can be found here:
<https://www.facebook.com/groups/rgmhs.org>



To start reading
today, Click Here:

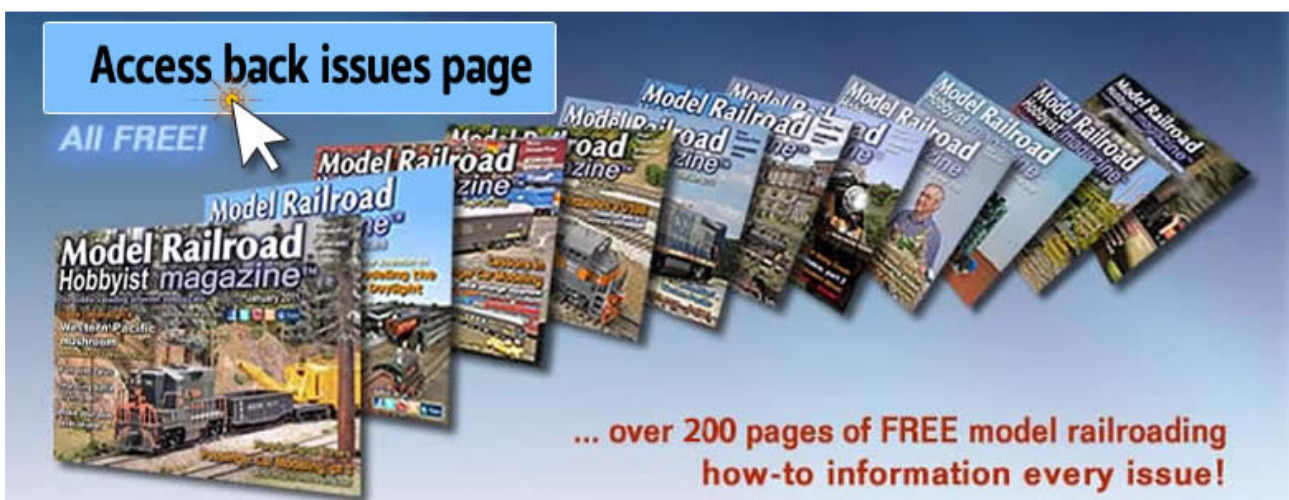
[https://model-
railroad-
hobbyist.com/](https://model-railroad-hobbyist.com/)



January
Running Extra:
\$2.99

**SUBSCRIBE
and save
80%!**

Subscribe and save BIG



**IF YOU'RE ASKING
ME FOR ADVICE**



**I'm going to assume you're out
of all other rational options**

The Rear View



2024 marks the ten-year anniversary of the construction of the **Western Kansas Rails** (WKR) N-scale layout. This journey began on January 15th, 2014, with a few sheets of plywood and a table saw. Let's look back and see how it came to be...



We began by cutting 4 x 8 sheets of 1/8-inch Luan plywood into 6-feet by 30-inch pieces for the tops and bottoms for the straight sections.

All sections, straight or corner, use **monocoque construction**, which means: "A structure in which the chassis is integral with the body." This allows a much stronger yet lighter section that will not twist or flex.

(Left) Section number 1 under construction. The section is upside down showing the internal structure. Everything is held together with wood glue, the pieces placed in position and clamped. The end plates are made from 3/4-inch plywood. Note, this section has an extra end plate (lower right) which

will mate to the yard sections. Each internal brace piece was pre-drilled to aid the electrical wiring in the future. This section is ready for the bottom skin, which will be cut out to allow access to each compartment.

We wish to give full credit to the "**Sippin' and Switchin' Society of North Carolina**" and their member **Mike Sherbak** for sharing their methods and standards. We simply modified the standards to meet our N-scale needs.

The Rear View



(Above) Once all sixteen straight sections were completed, our attention turned to the corners. To save space during transport, they were based on N-Trak specifications for three-foot corners. One difference was we decided to “round” the corner on the outside. This presents a good look but was interesting to complete as it required bending plywood. After several experiments, we took the outer side strip and cut kerfs on the inside of the curve area, plus we wrapped damp rags around the curve area to soften the wood as much as possible. (Upper right) Peeking through the bottom skin, we can see a larger number of bracing blocks on the inside of the curved area. It was a challenge, but we figured it out.

This view is of two different corners but shows the difference between the top skin on the left, and the cut out bottom skin on the right. Knowing we would have to wire the layout, we glued mounting pads in the middle of each compartment to provide a place to mount wiring loom clips in the future. The outer sides and underside of each section were painted flat black while the interiors were painted white to provide a better background when wiring. Due to the small size, each corner only has one set of banquet table legs.

The Rear View



By the end of March 2014, all sections had been constructed. (Above) You can see on the two unpainted corners some of the difficulty we had in making plywood bend (when it is not supposed to). You can also see that all four have the basic table legs, these will be extended later...

IN THE CURRENT ISSUE

Review: West Side Cabeese
Showcase Miniatures
by Thomas Knapp, MMR #101

Tribute to Seattle
Part 1
by Tim Jordan

Nashville Chattanooga & St. Louis GP7L
by Ron Bearden

In Pursuit of WOW
Part 20 – Building a City Block Diorama Using Our
Own Custom Printed Ghost Sign Decals
by Dennis Machlica

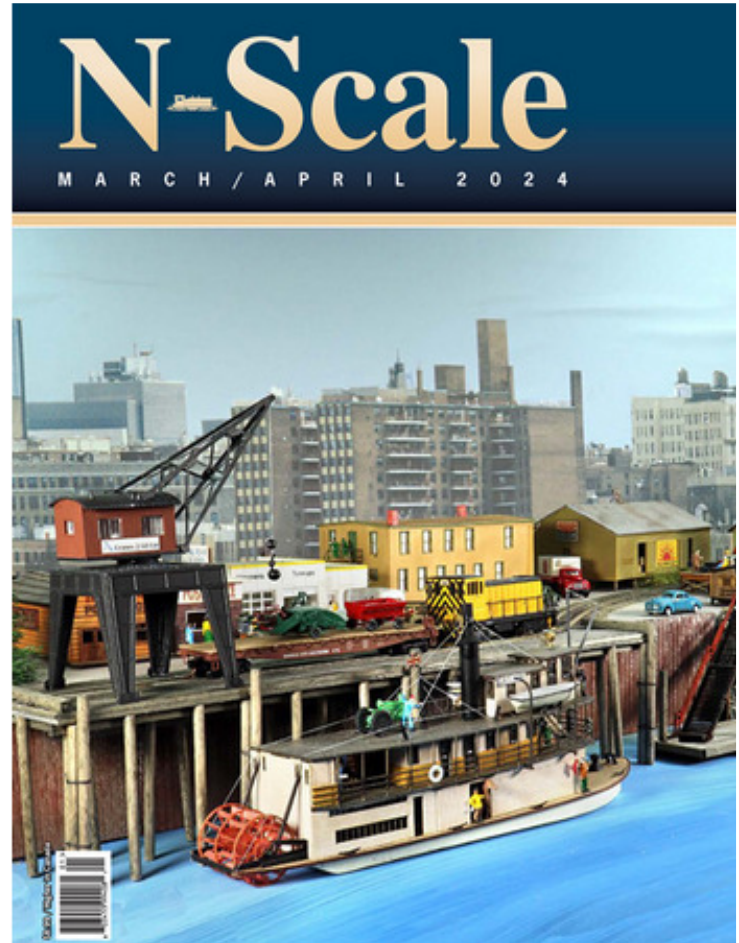
Introduction to Track Plans
Part 1
by Darrell Maples

The Short & Nn3arrow
Preston Sands' Alpine Engine House Model, Part 2
by Thomas Knapp, MMR #101

Once Upon A Waterfront
Part 7: Building A Faller Portal Crane
by Dennis Murphy

DIGITAL EDITION NOW AVAILABLE

**30 Years of N-Scale Magazine
Now Available on CD.**



On the cover: Things here in "Sea Port City" have really been charging up since the new City Council took over and changed the direction of commerce for the town. But to give them credit where credit is due, lots more commerce has been moving over the new dock. So, I guess the times are a-changing for the better! Follow the latest improvement on Dennis Murphy's Once Upon A Waterfront, starting on page 56.

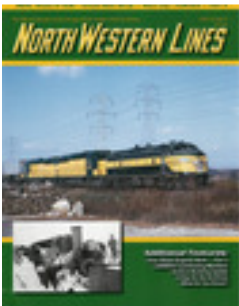
Start Reading Today!

Click here for the N Scale Magazine website: <https://www.nscalemagazine.com/>



CHICAGO & NORTH WESTERN HISTORICAL SOCIETY

The **Chicago & North Western Historical Society** was founded in 1973 by a group of Midwestern railfans interested in the C&NW, along with its predecessor and successor roads. These roads include the Chicago, St. Paul Minneapolis & Omaha; the Minneapolis & St. Louis; the Chicago Great Western; the Litchfield & Madison; the Fort Dodge, Des Moines & Southern; the Des Moines & Central Iowa; and many more. The Society's purpose is to collect, circulate and preserve the history of the C&NW and its predecessor and successor lines; to create and publish a magazine; and to promote fellowship among C&NW fans and Society Members.



North Western Lines is a quarterly publication which began in early 1974 as a seven-page mimeographed issue totaling 85 copies. Today it is published by the Society as one of the premier historical publications with 64 pages and more than 5000 readers. Each issue contains current news, feature articles, rosters, schedules, technical information and modeling articles. Members are encouraged to participate by writing articles and submitting photographs.

Your Chicago & North Western Historical Society **membership** gets you quick access to the latest publication of our great *North Western Lines* magazine which we publish four times each year. In addition, on our website for modelers we publish our *CNWS Modeler* which features great modeling ideas and projects. You also get discounts on some items in our Company Store such as calendars.

2024 Annual Convention

May 17 – 19, 2024

Union, IL.

More information coming soon!

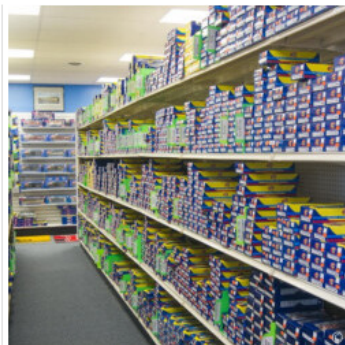
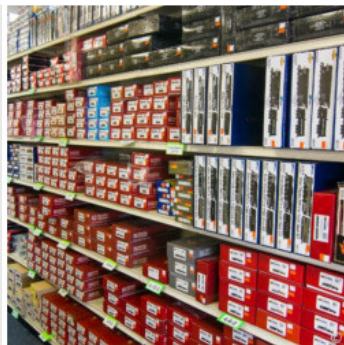
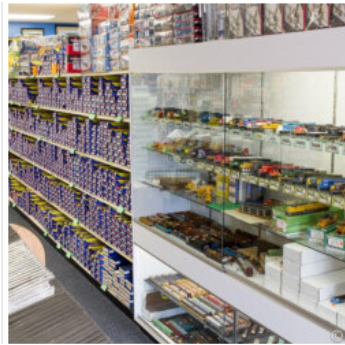
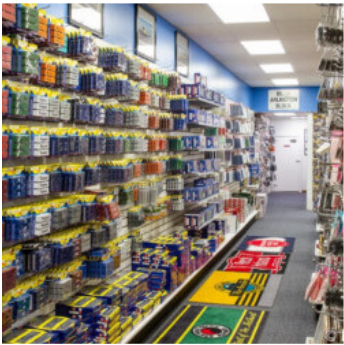
Click here for the C&NWHS website: <https://cnwhs.org/wp1/>

For the Facebook page of the C&NWHS, click here: <https://www.facebook.com/cnwhs>



Next Train Show on the schedule:

**Wichita Train Show & Swap Meet
Cessna Activity Center
Wichita, KS.
February 3rd and 4th 2024**



Whether you are one of our “show” regulars or a first-time visitor, we gladly invite you to come on in and browse around. You can follow us on Facebook by joining our page. We use Facebook and our newsletter to let you know when we have new announcements on the web site and any changes in our show schedule. Our newsletter is also used to send new product announcements and arrivals.

Click here for the Spring Creek Model Trains website: <https://www.springcreekmodeltrains.com/>

For the Facebook page of SKMT, click here: <https://www.facebook.com/springcreekmodeltrains>

When your girl wants a valentines gift but you spent your last \$400 on Train parts





The principal purpose of the **Operations Special Interest Group (OPSIG)** is to discuss, develop and disseminate ways of operating model railroads to realistically emulate practices of the prototype. This includes sharing information on various methods of generating and controlling traffic to heighten the feeling that our models are an active and integral part of the national rail transportation network, serving shippers and consignees throughout the nation. We also discuss and communicate information about the methods and procedures used by the real railroads and ways of most practically and realistically adapting them to the model world.

We publish a quarterly magazine, *The Dispatcher's Office*, which in addition to containing articles and information on railroad operations (both prototype and model), contains listings of operating layouts, sessions, and events that members are invited to attend. Back issues are available. In addition, the OPSIG web site serves as a clearinghouse for publicizing regional operating events and meetings, where layouts are open for guest operations.



Click here for the OpSig website: <https://www.opsig.org/>



Operations SIG

3.4K likes • 3.8K followers

Message

Liked

Search



Click here for the OpSig Facebook page: <https://www.facebook.com/OperationsSIG>



Oddballs

Every so often an idea or product just doesn't catch on and is not mass produced.

Baldwin DT-6-6-2000



From Wikipedia, the free encyclopedia:

The **Baldwin DT-6-6-2000** was a twin-engined diesel-electric transfer switcher, built by **Baldwin Locomotive Works** between 1946 and 1950.

A single prototype using a pair of 8-cylinder naturally aspirated 608NA prime movers was built in 1946 for the Elgin, Joliet and Eastern Railway. To minimise the length of the locomotive, the crosswalks at the ends of the locomotives were omitted. This feature was not repeated in the subsequent locomotives. 45-further locomotives were built using 6-cylinder turbocharged 606SC prime movers during 1948–1950.

The DT-6-6-2000 was most popular with the Elgin, Joliet and Eastern Railway, who purchased 27 of the 46 locomotives produced. Between 1956 and 1962, all but two of these locomotives (#100 and #118) underwent a significant rebuilding program. Several locomotives were rebuilt by the EJ&E at their Joliet shops and equipped with 1,200 hp Baldwin 606A engines.



Oddballs

Every so often an idea or product just doesn't catch on and is not mass produced.

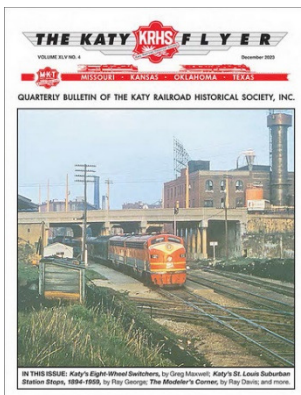


The rest were sent to the EMD facility in La Grange, Illinois, where they were rebuilt and equipped with modified SW series hoods, 1,200 hp EMD 567C engines, new control stands, as well as multiple-unit train control capability. The EJ&E rebuilt units were retired in the late 1960s, and the EMD rebuilt units were retired between 1974 and 1975. All were subsequently scrapped.



Katy Railroad Historical Society

The **Katy Railroad Historical Society**, a non-profit organization, was formed in Parsons, Kansas, on October 1, 1977. The purpose of the society is to bring together in close association those persons who have a common interest in the Missouri-Kansas-Texas Railroad, known to many as the Katy and to increase the enjoyment of their interest through appropriate activities, plus the increase of knowledge of and fostering of goodwill towards the M-K-T Railroad among members and the public.



Katy Flyer Membership

\$27 /One Year

- ✓ 4 Issues of the *Katy Flyer* Magazine
- ✓ Annual Member Directory

2024 KRHS CONVENTION

April 25 – April 28, 2024

St. Louis, Missouri

The KRHS' 2024 annual convention includes Katy Railroad photo and modeling seminars as well as yard tours by charter bus. Headquarters is the Hampton Inn & Suites – Clayton/St. Louis 215 Meramec Ave.; Clayton, MO located in the business district of suburban Clayton, Missouri.

Click here for the KRHS website: <https://katyrailroad.org/>

For the KRHS Facebook page, click here: <https://www.facebook.com/katyrailroad>



RMC RECEIVING YARD

ScaleTrains Releases PTC-Equipped Norfolk Southern Heritage ES44ACs

Now available from ScaleTrains is its latest production of Norfolk Southern Heritage ES44ACs as part of its premium-level RivetCounter Series.



RMC EXTRA BOARD

The HO Scale Galeton & Chestnut Lake

The freelanced HO scale Galeton & Chestnut Lake recalls coal and lumber hauling in central Pennsylvania.



RMC EXTRA BOARD

Dummy Third Rail for Modern Transit Scenes

Easy techniques to model an important detail for modern urban scenes, used by many commuter railroad and rapid transit lines alike.



RMC PRODUCT REVIEWS

Walthers Cornerstone Vintage Gas Station

Over the years, Walthers has produced models of several styles of service stations of varying sizes that reflect different eras.



RMC PRODUCT REVIEWS

Tangent Scale Models' Wide-Vision Caboose

International Car Company built cabooses for all of the "Hill Lines," including Burlington, Great Northern, Northern Pacific, and Spokane, Portland & Seattle.



RMC PERSPECTIVE

The Power of Community

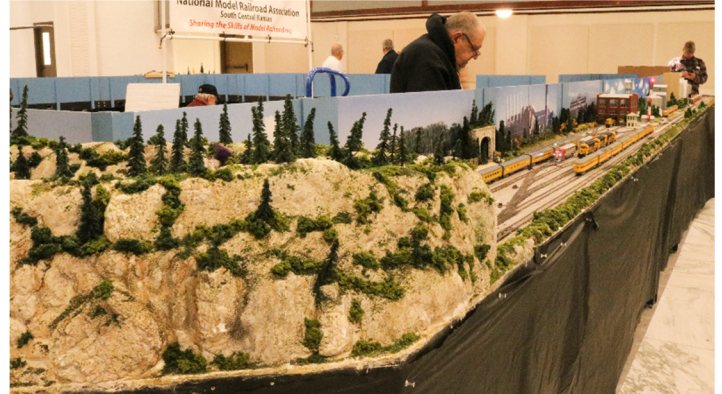
The greatest value imparted by this hobby lies in the community of friends gained by attending events and sharing skills with one another.

Click here to start reading today: <https://rrmodelcraftsman.com/>

McPherson, Kansas Train Show 2024

On January 13th and 14th 2024 the City of McPherson, Kansas became the center of the model train universe...

The **Chisholm Trail Division, NMRA** displayed a modular HO-scale layout.



McPherson, Kansas Train Show 2024



Watch the video here:

<https://www.youtube.com/watch?v=vNDjnwLWAmg>

McPherson, KS. Train Show
2024 - Chisholm Trail...



McPherson, Kansas Train Show 2024



Donnie Becker of McPherson, KS. Displayed his N-scale, N-Trak standards, modular layout.



McPherson, Kansas Train Show 2024



McPherson, KS Train Show
2024 - Donnie Becker N-sca...

Watch the video here:

<https://www.youtube.com/watch?v=gYlnN2OE5kM>

McPherson, Kansas Train Show 2024



The Wichita Toy Train Club proudly displayed their S-Gauge layout.



Watch the video here:

<https://www.youtube.com/watch?v=t5SEZoTr9KM>



McPherson, KS Train Show
2024 - Wichita Toy Train Club

McPherson, Kansas Train Show 2024



McPherson Kansas Train Show 2024 - Spring Creek...

Watch the video here:

<https://www.youtube.com/watch?v=KBPAHp0W8hw>



There were several vendors, including **Spring Creek Model Trains** from Deshler, Nebraska (left).

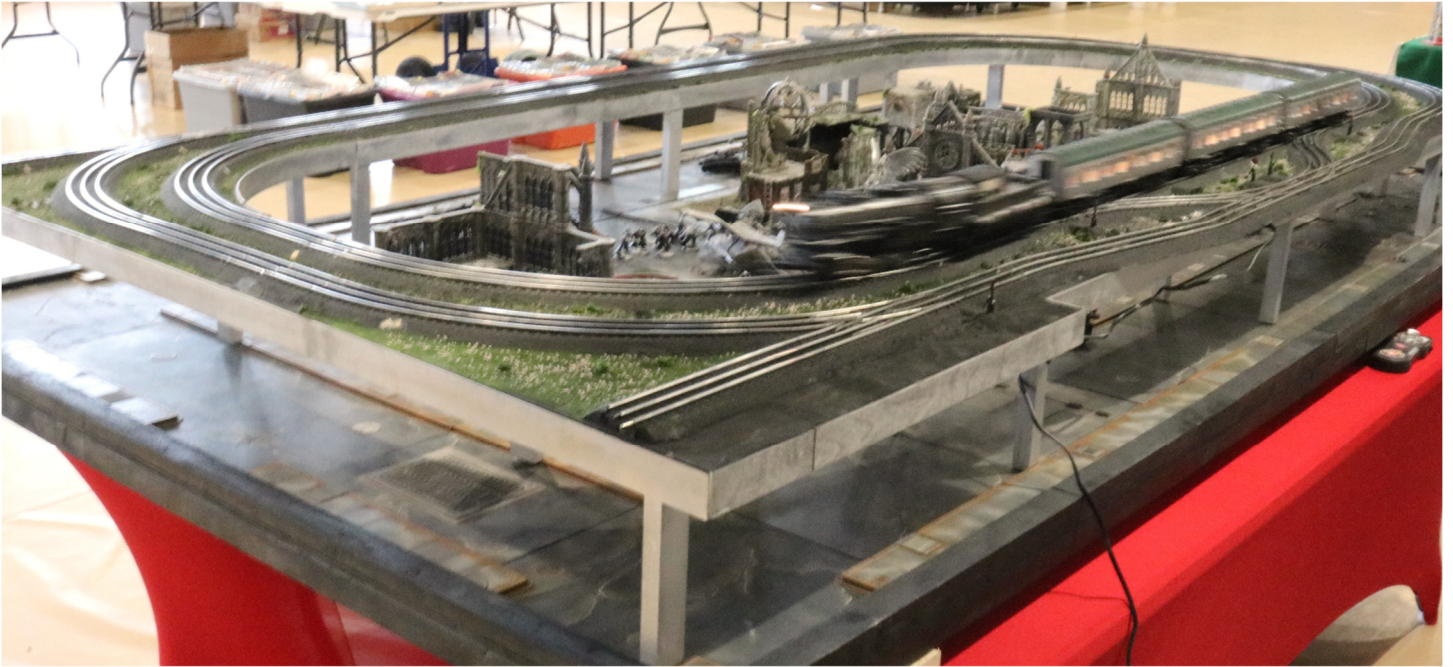


Also displaying his wares was **Tom Nebelsick** of Lincoln, Nebraska.



(Left) **Paul's Wood Toy Shop** was displaying his wood craftsmanship.

McPherson, Kansas Train Show 2024



Certainly attention-getting was this layout based on the video game “Warhammer”.



McPherson, Kansas Train Show 2024



One last layout to mention is the **Western Kansas Rails**, N-scale sectional layout, displayed by the Western Kansas Division, NMRA.



Watch the video here:

<https://www.youtube.com/watch?v=sZAUzKWnSoo>

McPherson, KS. Train Show 2024 - Western Kansas Rail...

Thank You goes out to Kelly Bruce and the entire Crew for putting on another great show!



The **Friends of the Burlington Northern Railroad (FOBNR)** historical society was chartered to gather, preserve, and share information about the history and the current operations of the Burlington Northern Railroad. The group began with about 140 members absorbed from the Burlington Northern Historical Society. In 1996, following the merger between Burlington Northern and Santa Fe, the group voted to follow the Burlington Northern from 1970 to 1995 and the BNSF from 1995 to the present. Then in 2018 we added coverage of the Montana Rail Link.

The Group's quarterly publication, *The BN Expediter*, is the voice of the organization that shares news about the group's activities, BN historical data, and current operations of the railroad. It is currently a 30+ page all-color publication and will grow even larger as the Society grows and more members contribute more information.

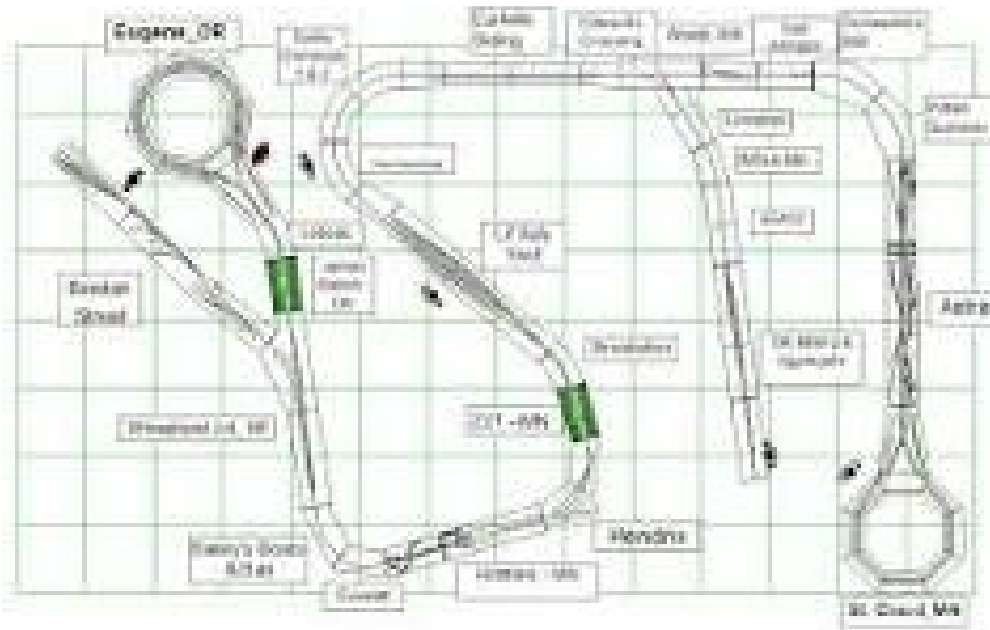


FOBNR 2024 Convention
Grand Hotel
Minot, North Dakota
June 19-23, 2024

Click here for the FOBNR website: <https://fobnr.org/>

For the FOBNR Facebook page, click here: <https://www.facebook.com/fobnr>

Free-mo was developed with the idea that a set of standards focusing mainly on module endplates would enable faithful modeling of prototype track plans and operations in a modular environment. The length and track configuration of a Free-mo module or module set is up to the modeler. Free-mo takes the boredom out of running trains monotonously around a double or even a triple track mainline. With Free-mo, less is more.



The **Free-mo** mainline is centered on a two-foot end so modules can be inverted 180 degrees and still mate up to the adjacent module without modification to wiring or track. The Free-mo mainline also takes advantage of stronger industry support of code 83 rail.



For the Free-mo Facebook page, click here: <https://www.facebook.com/groups/218290678222679>



Western Kansas Division

1.6K likes • 1.6K followers

👍 Liked

💬 Message

🔍 Search

Follow the activities of the Western Kansas Division, NMRA on Facebook:

<https://www.facebook.com/profile.php?id=100064641403539>



You can also follow the Western Kansas Division on their

MeWe page:

**Western Kansas
Division, NMRA**

31 Followers

<https://mewe.com/westernkansasdiv/feed>



ROCKY MOUNTAIN TRAIN SUPPLY STOCKS 1000'S OF
NEW PRODUCTS IN Z-N-HO-O-G SCALES.

Retail Store Location

6060A West 55th Ave.

Arvada, Colorado 80002

(We are on the West side of the building.)

STORE HOURS

MONDAY	10AM-6PM
TUESDAY	10AM-6PM
WEDNESDAY	10AM-6PM
THURSDAY	10AM-6PM
FRIDAY	10AM-6PM
SATURDAY	10AM-4PM
SUNDAY	CLOSED

Click here for Rocky Mountain Train Supply: <https://rockymountaintrainsupply.com/>

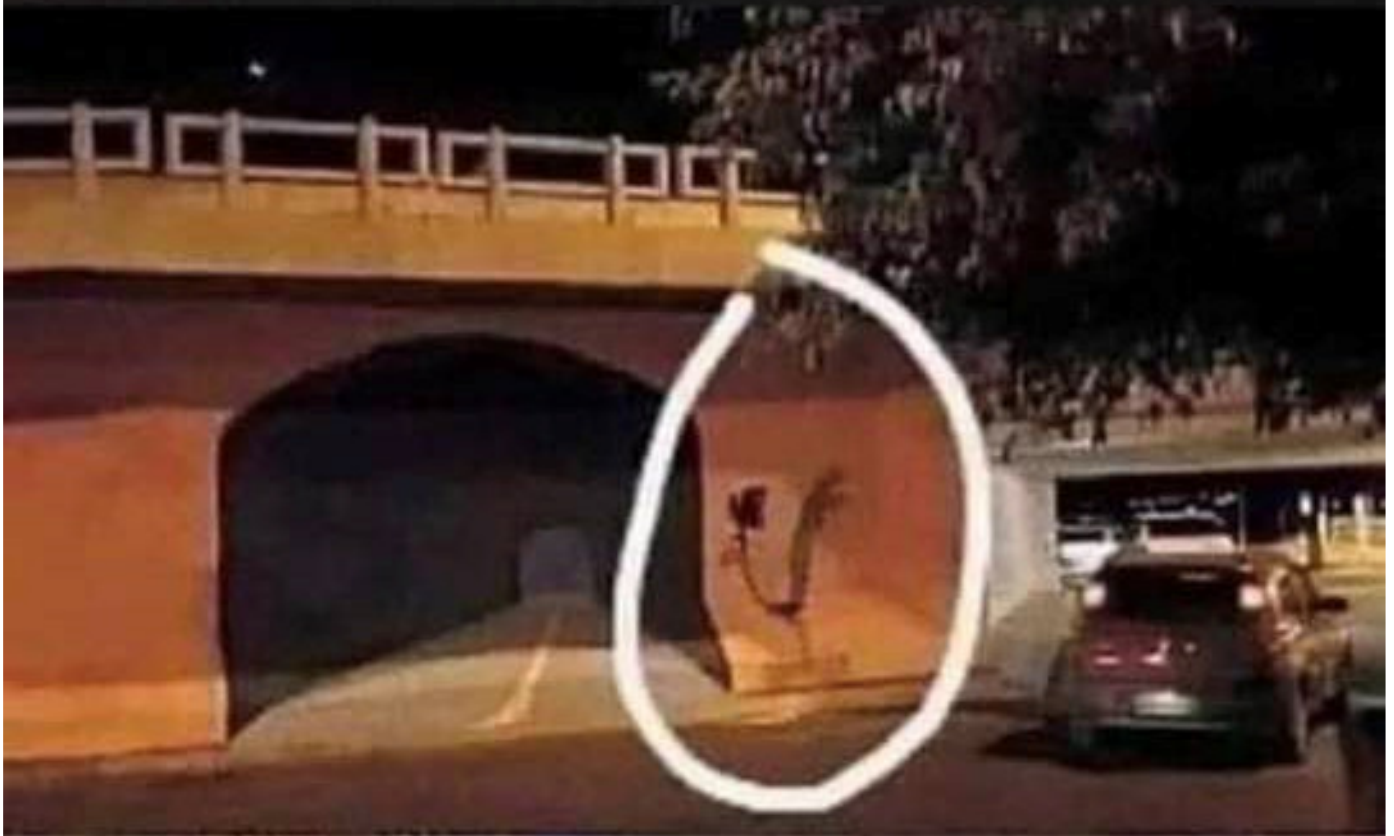
RETAIL STORE ADDRESS

6060 WEST 55th AVENUE
ARVADA, COLORADO 80002



Click here for N Scale Supply: <https://www.nscalesupply.com/>

Police are still looking for the smart ass who painted a tunnel under this bridge...





THE WICHITA TRAIN SHOW & SWAP MEET

www.besttrainshow.com

The Best Train Show in Wichita, KS

Sponsored in part by
Chisholm Trail Div. NMRA

Saturday, February 3, 2024 9am-5pm

Sunday, February 4, 2024 11am-4pm

**Cessna Activity Center
2744 George Washington Blvd.**

**Operating Layouts ~ Model Contests
Clinics ~ Over 100 Dealer Tables**

Scouts in
uniform
get in
FREE

HOURLY DOOR PRIZES

Admission \$8 Both Days

\$1 OFF
with non-
perishable
food item

**Military, First Responders, Fire,
Law Enforcement Admission \$1.00 with ID**

Kids 10 & under free with paid adult

Dealers: 8-foot tables (*Call for pricing*)

Call: Phil 316-259-5190 or email:

aylward1@cox.net



The Lawrence Model Railroad Club
The 22nd Annual Train Show and Swap Meet

2024

March 2nd (9am-5pm) & 3rd (9am-3pm)

Admission: Adults **\$8.00** donation & Children 12 and under **free** with paid adult

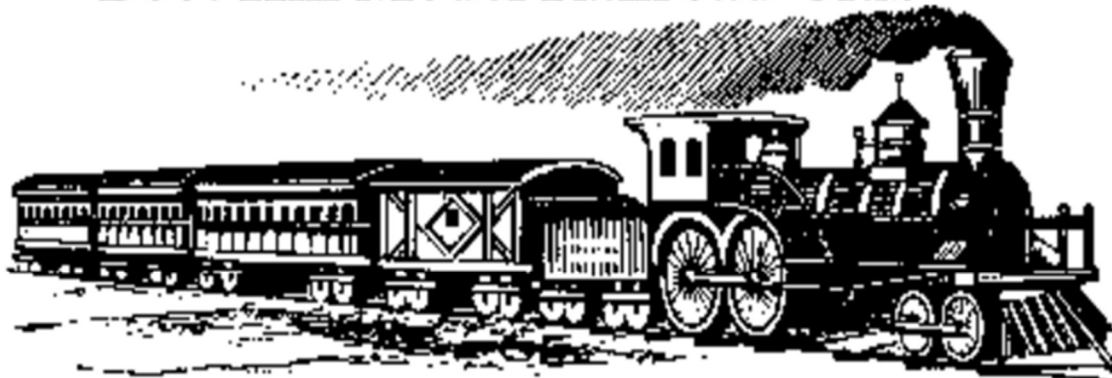
Bring canned food donations and receive \$1 admission discount per person

Barbwire BBQ Food Truck
Saturday and Sunday

Crown Toyota
3400 South Iowa St, Lawrence, KS
More information at www.lawrencemodelrailroadclub.org

2024 GARDEN CITY MODEL TRAIN SHOW

Boot Hill Model Railroad Club



**Garden City, Kansas
Finney County Fairgrounds
West Pavilion**

601 W. Lake Ave Garden City

March 9th & 10th 2024

Saturday 10 am to 5 pm; Sunday 11 am to 4 pm

BIGGEST LITTLE TRAIN SHOW AROUND

**Operating Layouts
Train Vendors
Lunch Counter**

**Admission: \$6 for adults
Children 10 and under free with adult admission**

For more information contact:

Jim Adams
620-290-1054
adamsarabians@hotmail.com

Steve Weidner
620-290-1862
sweidner@ucom.net

Mark Fisher
620-260-5560
markfish@ucom.net

Robert Hahn
620-271-8365
robertlh@wbsnet.org

We ask that all Covid-19 precautions be taken when visiting the show

Check us out at: <https://www.facebook.com/BootHillModelRailroadClub>

Benefitting Manna House of Dodge City

Date Book

February 2024

3rd & 4th **Wichita Train Show & Swap Meet** Wichita, KS.
Sat & Sun <https://www.nmrachisholmtraildivision.org/best-train-show.html>

17th **Winter Train Show** Stillwater, OK
Saturday Heartland Toy Train Association – Ricky Custer (405) 612-0690
Payne County Expo Center

March 2024

2nd & 3rd **Lawrence Model Railroad Club Show** Lawrence, KS.
Sat & Sun <http://lawrencemodelrailroadclub.org/>

9th & 10th **Boot Hill Model Railroad Club Annual Train Show** Garden City, KS.
Sat & Sun West Pavilion – Finney County Fairgrounds

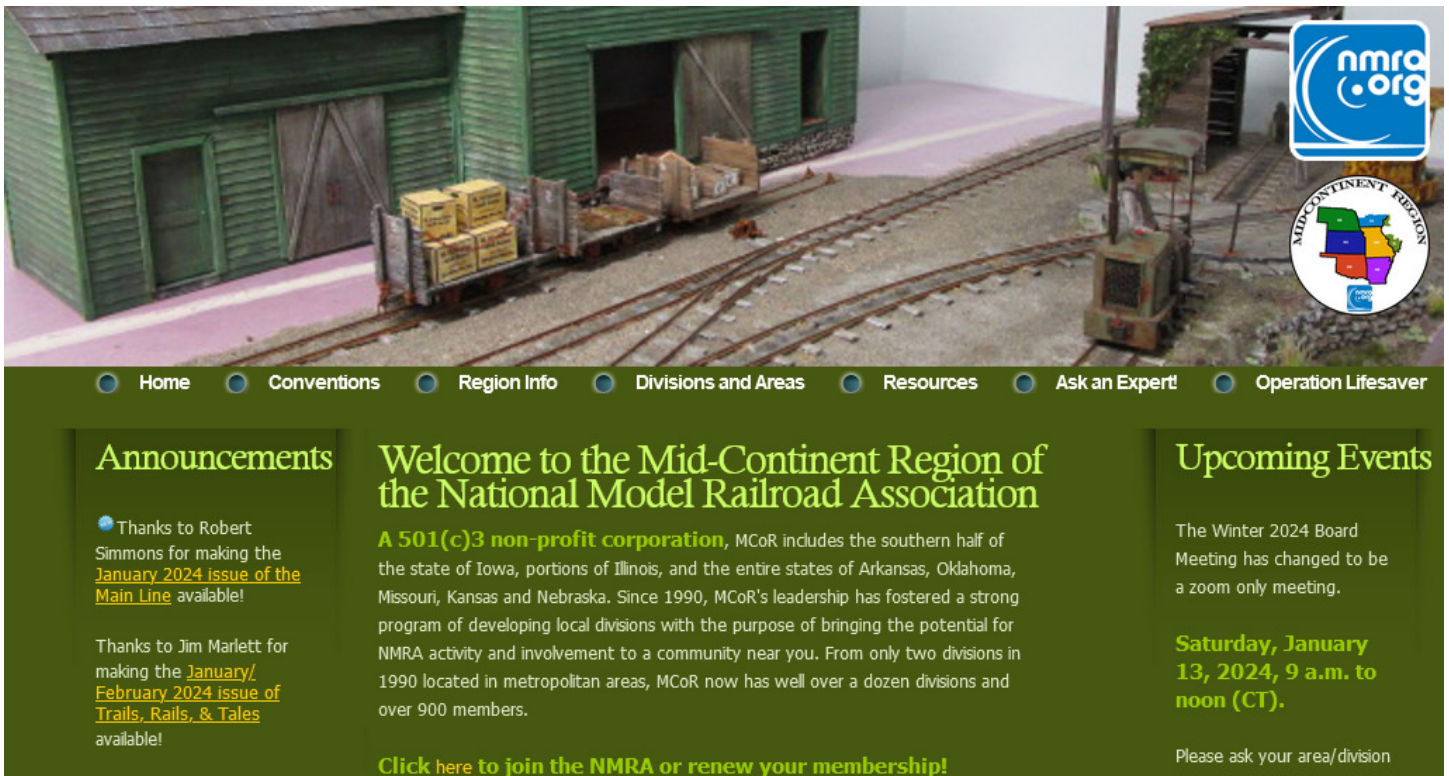
April 2024

*** There is NO North Platte Train Show this year ***

6th **Spring Train Show (Tulsa Area)** Kellyville, OK.
Saturday Heartland Toy Train Association – Ricky Custer (405) 612-0690
Creek County Fairgrounds

13th & 14th **Festival of Trains** Oklahoma City, OK.
Sat & Sun <https://www.festoftrains.com/>

27th & 28th **Herrington Railroad Days** Herrington, KS.
Sat & Sun <https://heringtonhistory.org/heringtonrailroaddays/>



Follow the activities of the Mid-Continent Region, NMRA on their website, get the latest on convention schedules, Region and Division information, copies of Division newsletters and more:

<http://mcor-nmra.org/>



Mid-Continent Region, NMRA

Public group · 610 members

+ Invite

Share

Follow the Mid-Continent Region Facebook Page for photos, videos, show schedules, modeling tip and more:

<https://www.facebook.com/groups/1851848998468077>



(Left) The Western Kansas Rails (WKR) N-scale layout was displayed recently during the 2024 Train Show in McPherson, Kansas. Each spectator was given a green ticket to hand to their favorite layout. After the show closed on Saturday, the tickets were counted, and the WKR was awarded the “*Public Choice Exhibit*” award.

(Right) Also during the McPherson Train Show, since part of the proceeds go to support the local Fire Department, the members of the Department get to vote for their favorite display. It was a close count, but the WKR layout won the “*Fire Department Choice*” award by one vote.



We wish to humbly thank all those who voted for the Western Kansas Rails layout.

The *Main Line*

Publisher & Editor: Robert A. Simmons

The newsletter of the Western Kansas Division is published monthly for no charge by Robert A. Simmons, Division Superintendent / Director

Copyright 2024, by Robert A. Simmons, all rights reserved.

If you have a change of e-mail address, or no longer wish to receive the newsletter, please contact Robert Simmons

Trainman55@hotmail.com or 10594 W. Briarwood Dr.– Dodge City, KS. 67801 or call (620) 521-3591

Please send all inquiries, ideas, or submissions to: trainman55@hotmail.com