



CABOOSE KIBITZER

Official Publication of the Mid-Continent Region, NMRA

Volume 55, No. 3 Summer 2005



Mid-Continent Region Call Board

President	Vice-President	Secretary	Treasurer	NMRA Trustee
Richard Napper MMR 7244 NW US Hwy 24 Topeka, KS 66618-5605 (785)582-4209 Fax(785)582-5268 renapper@mindspring.com	Larry R. Alfred 14633 S. Chalet Dr. Olathe, KS 66062-2527 (913)782-6584 lalfred2@comcast.net	Whit D. Johnson 810 E. 12 th St. North Newton, IA. 50208-2312 (641) 792-0712 (815) 232-4122 cell whitjohnson@mchsi.com	John A. Shaw Check www.mcor-nmra.org jashaw@birch.net	Jim Anderson 329 Hill Trail Ballwin, MO 63011-2654 (636)394-1305 andersjd@swbell.net

Board of Directors

Western Heritage	Turkey Creek	Indian Nations	Gateway Division	North Central Missouri
Charles Fennen 15218 Gertrude Omaha, NE 68138-6487 H(402)895-9556 cdejfennen@tconl.com	Paul W. Myers 10904 N. Harrison St. Kansas City, MO 64155-7364 (816) 468-7364 pualwmyers@kc.rr.com	Dave Steensland 6314 South Sandusky Tulsa, OK 74136-1623 (918)494-7799 dbsteen@cox.net	Jim Anderson 329 Hill Trail Ballwin, MO 63011-2654 (636)394-1305 andersjd@swbell.net	Unassigned

Salt Valley Central	Northern Oklahoma	Western Kansas	Kate Shelley Division	Kansas Central
Unassigned	Dan L. Harris P.O.Box 3604 Enid, OK 73702-3604 H(580-)233-4452 dharris@enid.com	Unassigned	Rich W. Liebich P.O. Box 121 Main Street Ripley, IA 50235-0285 (515) 436-7765 mliebich@iastate.edu	Chris Dancy 309 North Ohio Ave. Sylvan Grove, KS 67841-8117 (785) 526-7480 candjdancy@wtciweb.com

NE West Central	Chisholm Trail	Great Midwestern	Little Rock Area	South Central Missouri
Gene R. Tacey P.O. Box 485 Sutherland, NE 69165-0485 (308)386-2489 taceys@gpcom.net	Philip R. Aylward 603 Chestnut St. Halstead, KS 67056-2302 (316)830-3498 aylward1@cox.net	John H. Averill 14910 92 nd Lane Indianola, IA 50125 (515) 961-3018 GMDMCoR@cs.com	John O. Wallace #9 Pine Chapel Drive Bryant, AR 72022-3352 (501)847-3435 johnomt@yahoo.com	Brad Slone P.O.Box 313 Dixon, MO 65459-0313 573-308-7144 bradslone@yahoo.com

Maple Leaf Division	Fallen Flags	Platte Valley Division	Oklahoma Southwest	CD&M Division
Steve Marquess 503 West Cenral Ave. Bentonville, AR 72712 (479) 273-3175 sjmarqu@quixnet.net	Unassigned	John O' Neill 4112 W Faidley Ave Grand Island, NE 308-384-5011 jponeill@computer- concepts.com	Barry M. Quensel 13 SE. Lasso Loop Lawton, OK 73501-9281 (580)581-2585 QuBert1@aol.com	Gary Zillyette 3395 Clearwater Drive Bettendorf, IA 52722 563-320-2970 greatmodeltrains@earthlink.net fireman2176@earthlink.net

Illowa Rails Division	Ozark Mountain	Northern Arkansas	Southern Arkansas
Michael E. Worley 320 East 13 th St. Washington, IA 52353-2643 (319) 653-3782 meworley@lisco.com	Unassigned	Unassigned	Unassigned

Caboose Kibitzer Publication Department

Editor	Associate Editor	Mailing Chairman	Advertising Manager	Printer
Bob Jefferis 6000 W. Richard's Drive Shawnee, KS 66216-1721 913-631-4441 jeffbobj@swbell.net	Larry R. Alfred 14633 S. Chalet Dr. Olathe, KS 66062-2527 (913)782-6584 lalfred2@comcast.net	John Schindler 1950 Woods Circle Barnhart, MO 63012 (636)464-3431 johnbnsf@msn.com	Louis Seibel 1069 N. Logan Olathe, KS 66061 (913) 393-3495 L-Seibel@comcast.net	Al Latwaitis 1602 Nebraska St. Blair, NE 68008 402-426-9378 alnar@huntel.net

Membership Department

Chairman	Member Aid Co Chair	Member Aid Co Chair	Member. Dispatcher	New Member Chair
Larry R. Alfred MMR 14633 S. Chalet Dr. Olathe, KS 66062-2527 (913)782-6584 lalfred2@comcast.net	John Averill 915 Nevada St. Lot 17 Indianola, Iowa 50125-9098 (515)961-3018 GMDMCoR@cs.com	John Plott 2109 Ave. M Council Bluffs, IA 51501-0968 (712) 323-7153 jdplott@aol.com	Richard Napper, MMR 7244 NW US Hwy 24 Topeka, KS 66618-5605 (785)582-4209 Fax(785)582-5268	Richard Hester 1407 E. Fair Acres Dr. McCook, NE 69001-4208 (308)345-5528 rahester@ocsmccook.com

Convention Department

Chairman	Model Contest Chair	Area Meet Chairman	Clinic Chairman	Photo Contest Chair
Larry R. Alfred MMR 14633 S. Chalet Drive Olathe, KS 66062-2527 (913)782-6584 lalfred2@comcast.net	Whit D. Johnson 810 E. 12 th St. North Newton, IA. 50208-2312 (641) 792-0712 whitjohnson@mchsi.com	Gary Hemmingway 3201 SW Stone Ave. Topeka, KS 66614-2823 (785)273-3350 garynoho@cox.net	Don Wetmore 614 Osage Dr. Papillion, NE 68046-2433: (402) 339-1938 d.wetmore@cox.net	Rich Liebich P.O. Box 125 Ripley, IA 50235-0125 (515)436-7765 liebich@netins.net

Other Staff Assignments

AP Program Chairman	Region Attorney	Sales Manager	Education Chair	Scouting Merit Badge
Marty Vaughn, MMR 234 Meadowbrook Lane Wellsville, KS 66092-8100 H(785)883-4468 wmvaughn@mchsi.com	Robert Amsler 5630 Arenades Drive St. Louis, MO 63116-3202 (314)353-9131 ramsler@worldnet.att.net	Ken Thompson 911 QueensBridge Rd. Manchester, MO 63021-6709 (636)394-2247 rrpken@aol.com	Don Wetmore 614 Osage Dr. Papillion, NE 68046-2433: (402) 339-1938 d.wetmore@cox.net	Dave Engle 11519 N. Wayne Ave. Kansas City, MO 64155-2914 (816)734-8949 ironhors@swbell.net
Internet Webmaster	Calligrapher	2005 Conv. Chairman	2006 Conv. Chairman	100% NMRA Club Chair
John Shaw Check www.mcor-nmra.org jashaw@birch.net	Joe Roberts, MMR 912 Ridge Drive Belton, MO 64012-3129 (816)331-2773 Piperval@aol.com	Gary Hemmingway 3201 SW Stone Ave. Topeka, KS 66614-2823 (785)273-3350 GLHnGKH@cs.com	Charles Fennen 15218 Gertrude Omaha, NE 68138-6487 H (402) 895-9556 cdejfennen@tconl.com	Barbara Lundquist 594 Pioneer Road Papillion, NE 68046-3778 402-597-3988 blundquist@cox.net

Caboose Kibitzer

Volume 55, No. 3

Summer 2005

Editors **Robert A. "Bob" Jefferis**

Associate Editor **Larry Alfred**

Advertising Manager **Louis Seibel**

The **Caboose Kibitzer (CK)** is the official modeling publication of the Mid-Continent Region (MCoR), NMRA and is available on a subscription basis to *members* on a quarterly basis. The price of the CK is \$6.00 annually for a hard copy and it will be available later off of the web for a lower price. (The price will be determined by the Winter 06 issue of CK.

MCoR is a part of the *National Model Railroad Association (NMRA) Inc.* Starting October 1, 2005, membership in NMRA includes membership in the geographic *Region* (we are in MCoR) where the member lives as well as membership in the *Division* where the member lives. For more information about Divisions, please see the *Callboard* on page 2.

Most memberships in NMRA (see the membership application form on the last inside page for explanations) include a subscription to the monthly *Scale Rails* – that includes the *NMRA Bulletin*) and in MCoR also includes a subscription to the quarterly *Handcar* – informational publication of MCoR.

Application for either new or renewal membership in the NMRA and MCoR may be made by using the form provided on the inside back cover of this issue. Send your application to the National Model Railroad Association at the address shown therein.

Materials For Advertising

Please submit all requests for advertising to the Advertising Manager at the address shown on the inside back cover.

Materials For Publication

Switch List

4	The Head End - Summer	Richard Napper MMR
5	The Brasspounder's Desk	Bob Jefferis
6	Utilizing MRR Magazine Covers	Al Gaddini
7	Kate Shelley Div Fall Meet	
8	MCoR Region Model Contest Winners	Whit Johnson photos
12	MCoR Awards Banquet	
15	Operting Session Etiquette	John Shaw
16	Annual Meeting Minutes	Whit Johnson
17	Best Deal In Model Railroading	NMRA Rail Pass
18	MCoR Board of Directors Meeting ...	Whit Johnson
19	Kansas City Rail Experience	Bob Jefferis
20	Pike Registry	
21	Dealer Directory	
22	Region Club Roster	
22	Cover Photos and Coming Attractions	
23	Advertising Rates and Index	
23	Coming Attractions	Bob Jefferis

Items for publication must arrive before the dates listed below to be considered for inclusion in the corresponding issue.

Fall 05	November 1, 2005
Winter 06	February 1, 2006
Spring 06	May 1, 2006
Summer 06	August 1, 2006

Send all material for publication to the editor, Bob Jefferis at 6000 W. Richards Drive, Shawnee, KS 66216-1721. Or if it can be transmitted via e-mail, send it to jeffbj@swbell.net. It must be understood that no payment can be made for material submitted for publication.

Contributions of typed material can be made electronically (preferred), printed on *white* paper (please, no pretty pastels) with a laser or inkjet printer or a typewriter with a good ribbon. Acceptable but LOTS more work for me are dot-matrix printer or *neatly* handwritten (printed) – I can't scan dot-matrix or handwritten. Electronic versions can be as an MS Word file (.doc), text file (.txt) or an Adobe Acrobat file (and I really prefer the Word or text file). Media for transport to me can be via e-mail (jeffbj@swbell.net), a CD or a 3.5" floppy disk. (If you send e-mail, please use "CK Material" as the subject.)

If you have drawings in AutoCad, we can read those directly and print them. (Wonderful!)

Contributions of photos have lots of possibilities. Prints **made from photo negatives**, color or b&w, in sizes from 4x6 to 8x10 will work well. **Electronic images** of approximately 2 Megapixels work very well. 1 Megpixels photos are marginal and ½ Megpixels (such as made by most cell phone cameras) provide a photo that is very hard (if not impossible) to reproduce well. If possible, photos of individual models should be made with a neutral background. E-mail **may** work but your IPS may limit file size. Most do not permit attachments of over 2 Meg. 3.5" floppy disks are fine but they are limited to 1.44 Meg. CDs are excellent and lately are cheap.

THE HEAD END

By Richard Napper MMR

Summer 2005 CK

I want to clarify what I said in the last head end column about your membership in MCoR and your subscription to the Caboose Kibitzer.

If you are member of MCoR before 1 September 2005, your subscription to the Caboose Kibitzer will be honored until it is time for you to renew your membership in the NMRA. After 1 September 2005, everyone that is a member of the NMRA that lives within the boundaries of the Region will have to choose if they wish to receive the Caboose Kibitzer as a hard copy or download it from our web site which is www.mcor-nmra.org. You can make the choice at the time you renew your national dues. It will be \$6.00 a year subscription fee for a hard copy, or the BOD will establish the web site fee at the January BOD meeting. The web form will be PDF, you will need to know your NMRA national number, your MCoR region number, and have a valid E-mail address in our database before you can access the CK on line. It will not be posted until after the hard copies have been mailed to those members. One year's worth of CK will be maintained on line.

If you are a NMRA life member, but not a MCoR life member, you will have to subscribe to the CK if you want to receive it. Every member will get the President's Handcar at least twice a year; I will probably produce it four times a year just like the CK. The Handcar will go to all members of the region without the need for a subscription fee. The Handcar will contain the information about the region such as any further head end columns, Board of Director Meeting minutes, information about the Region convention, and other information about the region. The CK will be devoted to modeling articles only.

If you have an E-mail account and access to the Internet, be sure to check out our web site. The site will contain information about the regional convention, the call board for the region and your division, and has a feature called ask the experts, where you can ask MMRs in the region a question about modeling. The MMRs will direct you to research information if it is known but will not do the research for you, that is your job. If you have any suggestions to improve the web site or the region let me know and I will pass it on to the correct party.

All members will receive the President's Handcar for being a NMRA/MCoR member. The Caboose Kibitzer will only contain modeling articles after 1 September 2005. All information about the region will be contained in the Handcar.

There are a number of our region areas that do not have a director to the BOD. This is a very important position because the director is your representative for you to the BOD. Region 29-12 - Northern Arkansas Area, Region 29-14 - Salt Valley Central Area, Region

29-17 - Western Kansas Division, Region 29-24 - Southern Arkansas Area, and Region 29-11 - Ozark Mountain Area all need directors. The only requirement is that you live within the division/area boundaries, and be a NMRA/MCoR member. The job is really not that demanding on your time, so if you are interested contact me. You can earn your Official certificate by being the director for three years.

Speaking of the AP program, it is headed up by Marty Vaughn, MMR, and I am sure he would like to see a higher level of activity by everyone. Get you division inspired; let's see more MCoR MMRs!

The Topeka Convention is over. We only had 75 registrants, but those that came had a great time. We were expecting more like 200 registrants, which



is about average for attendance. Please let me know why you did not come to the convention so we can better plan for next year in Council Bluffs, 1-4 June 2006. You can E-mail me at renapper@mindspring.com. Please respond. I just do not understand why attendance was so low.

One last comment, after 1 September 2005, as MCoR Membership dispatcher, I will no longer send you a MCoR membership letter or card, but your MCoR number will still be maintained in the MCoR database. You will be able to subscribe to the CK at the time of your renewal through NMRA HQ. That's the way the NMRA wants it; they got it.

Remember the FRISCO!

Richard E. Napper, MMR
MCoR President

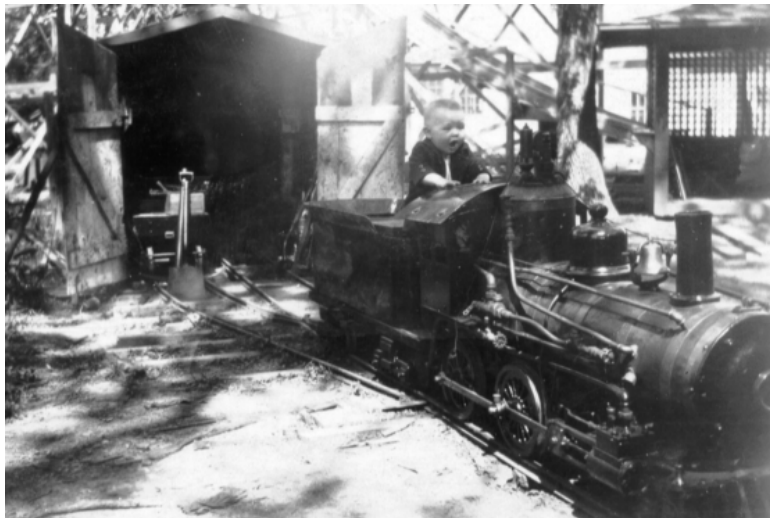


BRASS POUNDER'S DESK



This is your new editor's column. Where did the column's name come from?

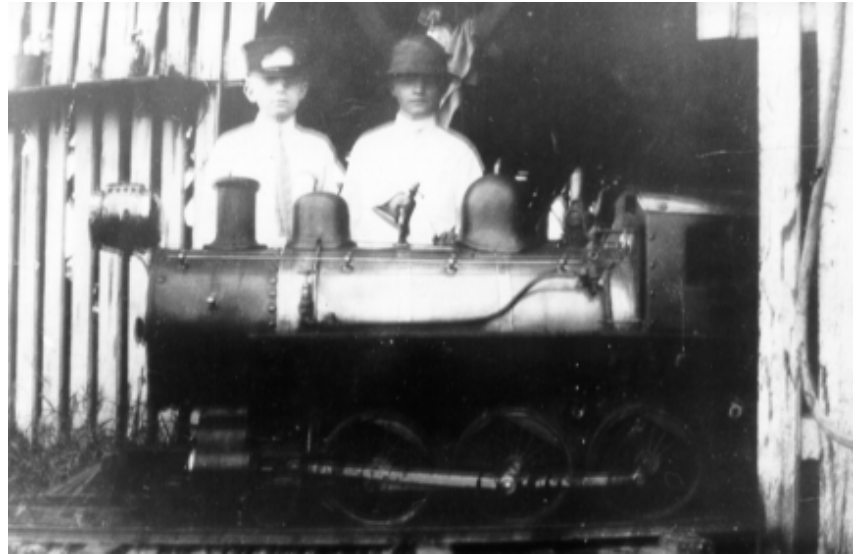
In the 1930s and 1940s my Dad subscribed to a magazine called *Railroad Magazine* – or one of two or three similar names – so it came to my home every month. Dad encouraged rather than discouraged my reading it. In the Depression Years there was a prolific writer named Gilbert Lathrop who started writing when he was firing on the Denver & Rio Grande Western, both narrow and standard gauge. He grew up in Cimmaron, Colorado, where his father was an engineer on the D&RG narrow gauge. **Brasspounder** was one of the terms used by in his writings in the railroad-interest magazines and referred to a telegrapher – someone who dispensed information to others. Since that is what an editor is supposed to do, your new editor has used the *Brasspounder's Desk* as a title for his column in two previous newsletters. The first was the *Lightning Slinger* (another way of saying telegrapher, you'll note) from 1996 – 1999 of the Turkey Creek Division, Mid-Continent Region, NMRA newsletter. The second was *The Local*, newsletter of the Kansas City Chapter of the National Railway Historical Society, continuing from 2000 through the current time and continuing to now.



Now for a little background on your new editor. I guess you might say I've been a railfan for quite a while. The young fellow on the tender of the 12" gauge amusement park steam locomotive is yours

truly and the picture was taken at Clear Lake, IA, in 1930.

The other picture provides a little background as the 12-year-old with the brimmed hat was my



Dad in 1913 when he worked on the 12" gauge train – another real steam locomotive – at Forrest Park Highlands amusement park in St. Louis, MO. Dad later owned and operated a 15" gauge (1950) and later a 12" gauge (1960 – 1966) steam locomotives that I ran quite a bit.

I have belonged to NMRA since 1964 and been a Life Member for several years now and am a Life Member of the Region. I can't claim a lot of model building experience as I was a hot-hot *armchair* modeler for several years and then got into 1-1/2" scale. Recently, after the Kansas City Live Steamers lost their track, I sold my two 7-1/2" gauge live steam locomotives and am now embarking on a "new life" with 3/8" scale (#1 gauge) electric operation. Motive power will be battery-powered and radio controlled of the "garden railroad" type.

My interests run toward electric railroads first, steam railroads (especially narrow gauge and the Missouri Pacific) second and diseasels last – if ever. This is mentioned because as an editor I tend to lean toward my interests before things of less interest. This is to warn you that if you really want lots of stories involving diseasels in the Caboose Kibitzer, it behooves you to write and submit such stories.

Please note in Richard Napper's column where he said, "The Caboose Kibitzer will only contain modeling articles after 1 September 2005. All information about the region will be contained in the Handcar."

Utilizing Your Model Railroad Magazine Covers

By Al Gaddini

Summer 2005 CK

If you count the number of Model Railroad magazines that you have there probably is quite an amount. Caboose Kibitzer, Scale Rails plus the Railroad magazines you buy at the Hobby Shop over a period of time can add up. By saving them for your railroad Library there is a wealth of good photos and information to help you with building and maintaining your Model Railroad.

However there is a lot of advertising along with the articles and photos making the magazine thicker. This can make your stack of magazines higher, taking up more shelf space.

By removing the advertising pages and saving the article, articles or photos that you're interested in you can turn the magazine cover into a colorful file folder with the date of the material.

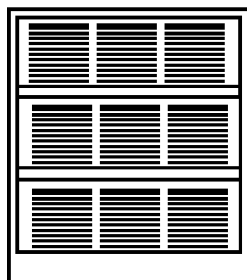
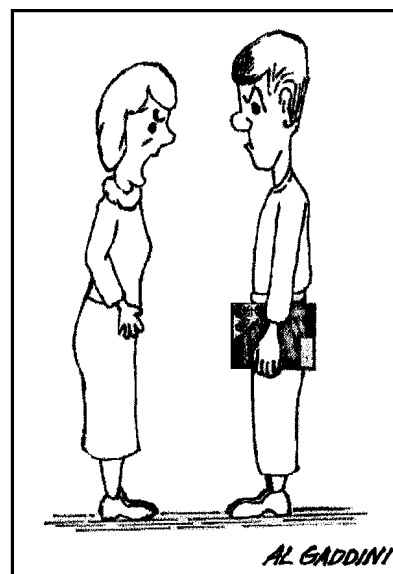
To make your folder, first remove the staples from the magazine and remove the inside of the magazine from the cover. Sort out the article or articles that you want to save and cut them out. Sometimes you will have a foldout that can be saved as is.

To cut out the pages I use an Exacto knife and cut down through the middle of the magazine, between the pages. Be sure you do this on a cutting pad, cardboard or a piece of poster or illustration board. You can also use scissors.

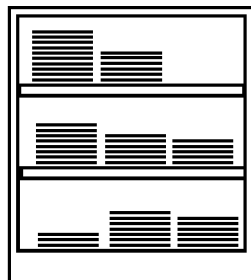
Discard the advertising pages and put the articles and photos you want to save in your magazine cover. Hence (and where would we be without the word hence?) you have a colorful folder with just the material you want for your library with more storage space.

You probably wonder when there's a good time to do this? Would you believe a good time is when

you are watching TV. A card table or other small table, a wastebasket, Exacto knife or scissors and a cutting surface to protect the top of your table and you are ready to make some nice folders utilizing your magazine covers



Before



After

“The last time you cut up your magazines, I couldn’t find the scissors for two weeks” !!!



KATE SHELLEY Division

MCoR, NMRA

Fourteenth Annual Fall Meet

Come One Come All to The Annual
Fall Meet. Enjoy Clinics, Silent
Auction, Contests, Dealers, Displays,
Layouts, Prizes, and Railette Events

Where: United Community School, US Highway 30,
Between Ames and Boone, IA

When: November 5, 2005, 9:00 a.m. - 3:00 p.m.

Info: Bob Folkmann 515/232-8689; rfolkmann@mchsi.com,
whitjohnson@mchsi.com

SEE YOU ALL THERE!



1st Place Diesel
Al Warren MMR

General

2nd Place Diesel
Al Warren MMR



3rd Place Diesel
Al Warren MMR



1st Place Freight Cars
Marty Vaughn MMR



Our webpage – <http://www.mcor-nmra.org/>
- will answer many of your questions.

Correspondence relating to your subscription, extra
copy requests or a change of address should be
2nd Place Freight Cars
Paul Richardson MMR

Notes

1st Place Non-Revenue
Best Of Show
Ron Morse MMR



2nd Place Non-Revenue
Paul Richardson MMR

1st Place On Line Structures
Peter Ellis



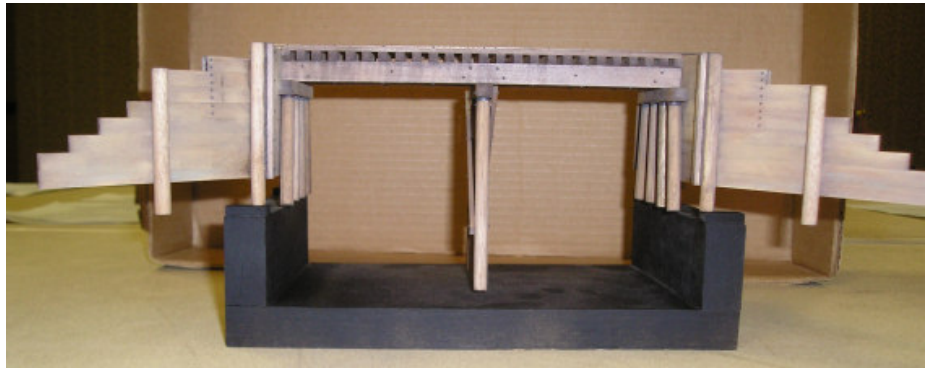
essarily represent the policy of the MCoR/NMRA. Unless specifically restricted, any item in this publication may be reproduced as long as proper attribution is made.

2nd Place On Line Structures
John O'Neill



directed to the MCoR Secretary (see page 2). Unless noted to the contrary, the editorial policy and content of this publication reflect the opinion of the editor and contributors, and do not nec-

3rd Place On Line Structures
Larry Alfred MMR



3rd Place Off Line Structures
Larry Diehl

2nd Place Off Line Structures
Marty Vaughn





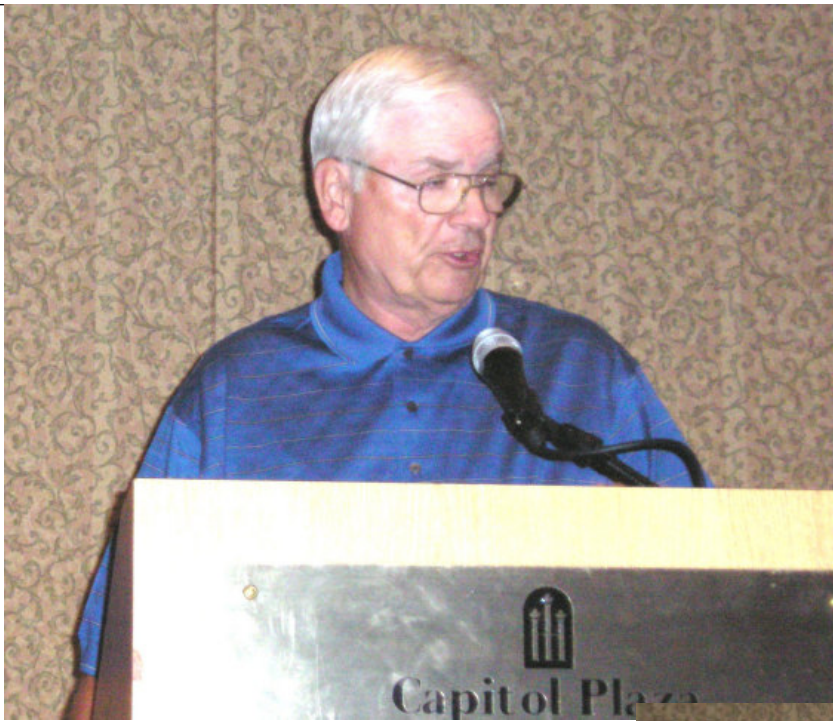
Top: Shot of left side of Head Table, Ken Thompson, Jim Anderson, Carla & Whit Johnson, Larry Alfred



Left: Jim Flynn reading Larry Long Award

Below: Jim Flynn presenting Larry Long Award, smaller permanent plaque and large traveling plaque, to Henry Kraichely





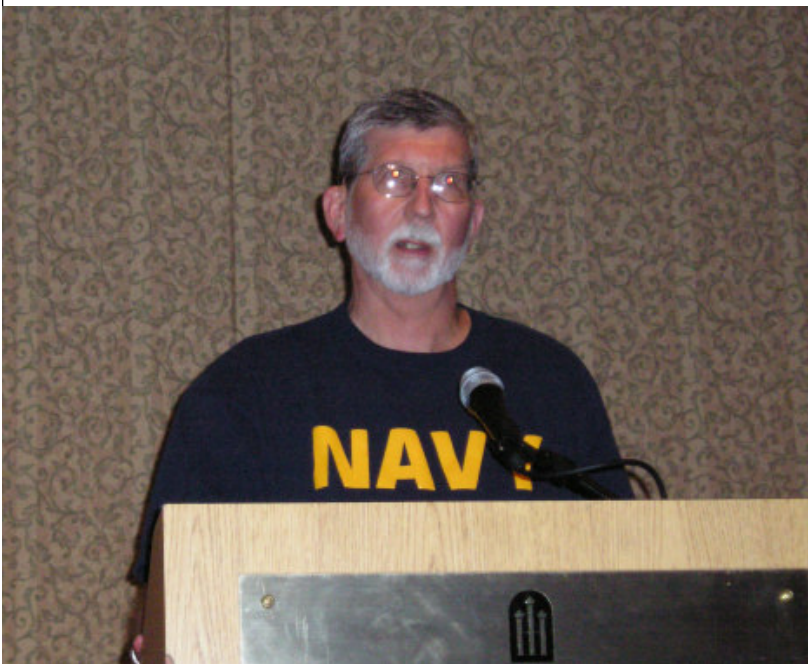
Top: Jim Anderson reading Kenny John Award

Right: Richard Napper presenting President's Award (Kenny Johns Award) to John Shaw



Below: Jim Anderson presenting Kenny Cline Award, smaller permanent plaque and large traveling plaque, to Whit Johnson





Top: Larry Alfred reading Narrow Gauge Light Iron Award

Right: Larry Alfred presenting Narrow Gauge Light Iron Award to Marty Vaughn

Below: Larry Alfred presenting Convention Departments Award to Gary Hemmingway



(Submitted to the Bulletin, January 19, 1998 to Terry Bacus, Jr.)

A set of questions regarding Operating Session Etiquette was posted in the Layout Design SIG Chat group followed by a general discussion of the topic. Since I had just moved to a new home in a new town, these suggestions could not have been timelier. Listed below is a distillation of those conversations.

Question:

Is there a "proper" way to become a member of a regular operating group?

Being invited is the most obvious and polite way, but how to make contacts?

What should my qualifications be?

What should my qualifications be?

To participate in any operations group, you'll be expected to know the basic railroad operating rules. Pickup a copy of any railroad's rule book at a nearby flea market and read through it (they're all pretty similar). If you can't find one, reading through Bruce Chubb's book, "How to Operate Your Model Railroad" (out of print), is another good starting point. You might be able to find this at your local library.

Experience helps, but most groups accept beginners as it doesn't take long to gain the necessary knowledge. In most operating sessions you're expected to participate and learn on the job! Just jump in and go. Don't be afraid of asking questions as everyone else was a newcomer at some time. Even if a mistake is made, there's little that can be hurt on a model railroad!

So how do you get invited for that first session?

Most layout owners are more than happy to give a tour of their layout if you ask nicely. Just remember the rules about layout tours; arrange the visit ahead of time, show up on time, be polite, compliment, don't criticize, ask lots of questions about what the owner is doing ("how did you do this", "where did you get the idea for that", etc), don't touch anything, thank the host for showing you around, and don't overstay your welcome! If you like what you see, don't forget to ask about how the layout is operated... how many people are required, what the operating scheme is, etc. If that sounds interesting to you, ask if you can sit in on a session. Again, most layout owners will be glad to have you along if you've asked intelligent questions and shown a keen interest in their layout and if you haven't shown a keen interest, it's probably because the layout doesn't appeal to you anyway, right?

Don't show up at someone's layout on operating night uninvited. Most layout owners don't appreciate this, and it can throw a real monkey wrench into their plans. If you should do so, don't get angry at them if they tell you sorry, but no. It's their home, and you weren't expected.

So how do you get invited back after that first session?

When you are invited to an operating session, inquire if headset radios such as Radio Shack's or Maxon's 5-channel radios are used. Many operating sessions use these to communicate during the session. Bring extra batteries with you just in case.

Arrive a little early get to know the other operators ask questions don't be shy. Ask if there are any special rules for operating on the layout. (John Allen didn't allow anyone to touch any of the cars on his layout even if they derailed. This was due to John Allen's photographing the layout. If a fingerprint showed up on a car in one of his photos, he wanted it to be his.)

Don't bring your camera in to the operating session. If you want to take pictures arrange that for another time or at least wait till the session is over if it's not too late. DONT bring a guest unless it's been arranged with the host.

When you first attend an operating session on a layout that's unfamiliar to you, team up with an experienced operator. While you may know how to run a train (nice and slow, with careful starts and stops), you won't know a thing about the layout or the operating system. The last thing you want to do is screw up everybody else's fun by plugging the mainline all night because you don't know what you're doing. Usually, you'll be ready to run your own train after about an hour (real time) of observation. The point is, you want to get a feel of how the operators run the layout, and a feel for where the towns are, where the mainline goes, etc. Once you are running a train by yourself, pick something simple the first time out and don't be afraid to ask questions. Be sure you understand what the train is supposed to do and when it's supposed to do it, and be sure you know how many other trains your train meets (or otherwise effects), and what time to expect them. And don't be afraid to ask questions of the host or other operators. It is best if you ask questions of operators who are not currently busy. Try not to bother operators in the middle of switching.

Don't take the most complicated or difficult job the first time you operate on a new layout. The last thing you want to do is mess up royally and make a bad impression on the host. That's what you're trying to avoid. What you want to show the host and his operators is that you are a CAREFUL, OBSERVANT

operator who is willing (and able) to learn how the layout works.

Always thank the host at the end of the evening. If he or she seems to have enjoyed having you, it's probably OK to ask about coming back again sometime. If the answer is yes, leave them your name and number in writing and ask for theirs. If you don't hear anything a week to ten days before the next session, it's probably OK to call and ask if there will be space on the extra board, so to speak. If not, thank them and try again in a few months. Don't call every month if you keep getting turned down.

Try to make friends with some other members of the operating crew. Even if it doesn't work out with the layout owner, you might meet someone else there with an operating layout that might enjoy having you over, who might need operators and doesn't mind a little training. Then, during that session, try to make friends with some of his crew too.

General Rules to Follow:

- 1) You are a guest - act like one. Offer to help clean up, never leave any mess of your own, and

try to cause your host the least amount of hassle possible.

- 2) Let your host know how much you appreciate the chance to learn. Ask questions, but don't bother him/her while they are running the main yard and have 3 trains stacked up waiting to enter because the yard is full!
- 3) Be careful! Don't break things, don't speed on the main, don't shove cuts through the bumper at the end of the siding, and don't dump your train on the floor!
- 4) Admire the railroad. The old adage "if you don't have anything good to say..." certainly holds true here as well.
- 5) Ask what constitutes "acceptable behavior". For example, is bringing that brass showpiece locomotive for show and tell considered showing off, or really cool?
- 6) Bring your sense of humor.
- 7) Ask what you can do. For example, could you bring some soda, or homemade cookies? If you do bring snacks, bring dry snacks such as pretzels, M&M's, nuts, etc. Don't bring cake or powdered donuts that create greasy fingers.

**Annual MCoR Business Meeting
Capital Plaza Hotel
Topeka, Kansas
June 11, 2005**

President Napper called the meeting to order at 8:34 P.M.

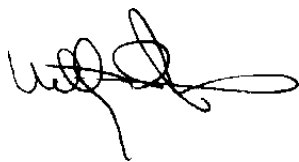
A motion was made that the Minutes of the last meeting be approved as printed was made by Dean Windsor MMR, seconded by John Averill. PASSED

The next regional convention in Convention will be in Council Bluffs, IA in 2006

Motion to adjourn was made by Miles Hale MMR, seconded by John Shaw. PASSED

Meeting adjourned at 8:35 P.M.

Respectfully submitted,



Introducing the best deal in model railroading.

Join the NMRA for 6 months for just \$9.95*!

- ◆ Have easy access to one of the world's largest railroad libraries...which includes over 100,000 prototype photos, 6,000 books, and over 50,000 modeling, prototype and historical society magazines
- ◆ Experience the fellowship and fun of getting modeling help and discussing the hobby with other members in your area
- ◆ Receive reduced rates on special insurance for your layout or collection
- ◆ Get admission to local model railroad meetings and events
- ◆ Receive 6 monthly issues of *Scale Rails* magazine
- ◆ Have access to standards information and data sheets
- ◆ Be a part of programs like "Modeling With The Masters," Pike Registry, Estate Counseling, contests, clinics, the Achievement Program and more!

Visit www.nmra.org to see what you're missing!

Sign me up!

Fill out this form, include your payment of \$9.95 (U.S. funds only) and mail it to: NMRA - Rail Pass Membership, 4121 Cromwell Road, Chattanooga, TN 37421-2119. Or sign up online at www.nmra.org.

Name _____

Address _____

City/State/Zip _____

Phone (____) _____

Email _____

☐ Check

☐ Credit card

Credit Card # _____

Credit Card Exp. _____

Signature _____

**LIMITED
TIME
OFFER!**



*Rail Pass offer is good in the U.S. only and is for new members and those who have not been NMRA members for two years or more. Individuals can only join at Rail Pass rates one time; membership renewal will be at the regular membership rate. Rail Pass members can vote, attend conventions and participate in contests, but cannot hold office and will not receive a New Member Pak.

**So much bang.
So few bucks.**

MCoR Board of Directors Meeting

Johnson County Library

Olathe, KS

January 29, 2005

Summer 2005 CK

MCoR Board of Directors Meeting

Capital Plaza Hotel

Topeka, KS

June 10, 2005

The regular meeting of the Board of Directors of MCoR was called to order at 12:06 P.M., June 10, 2005, at the Capital Plaza Hotel in Topeka, KS. The presiding officer was President Richard Napper. A quorum was present, including the following officers and members:

Richard Napper MMR	MCoR President, Kansas Central Div. Director,
Larry Alfred MMR	MCoR Vice President, Convention Dept. Chair
Ken Thompson	MCoR Treasurer, Sales Man., Library Com. Chair
Whit Johnson	MCoR Secretary, Region Contest Chairman
Jim Anderson	MCoR Trustee, Gateway Div. Director
Marty Vaughn MMR	MCoR AP Chairman
Charles Fennen	Western Heritage Div. Director
Rick Liebich	Kate Shelley Div. Director
Paul W. Meyers	Turkey Creek Div. Director
John Averill	Great Midwestern Div. Director
Phil Aylward	Chisholm Trail Div. Director
Gary Hemmingway	MCoR Area Meet Chairman
John A. Shaw	MCoR Webmaster
Barry Quensel	Oklahoma Southwest Area Director
John O'Neill	Platte Valley Division Director
Alan Merta	Cedar Rapids, Davenport, & Moline Division Asst. Dir.
Steve Marquess	Maple Leaf Division Director

Proxy was presented from Chris Dancy, Kansas Central Division Director, for Richard Napper MMR to represent him.

Proxy was presented from Gary Zillyette, Cedar Rapids, Davenport, and Moline Director, for Alan Merta to represent him.

A motion to accept the minutes of the January 2005 BOD Meeting as published was made by Larry Alfred MMR, seconded by Charles Fennen. **PASSED**

Treasurer Ken Thompson gave a report on MCoR Finances. A motion was made to accept the report by John Averill, seconded by Charles Fennen. **PASSED**

Directors Reports: Reports were presented as published.

Richard Napper reported the Region has a total 612 members. This number represents 55% of the NMRA members living within MCoR Boundaries.

Convention Committee: Larry Alfred, Convention Committee Chairman, announced his resignation as chairman effective at the end of the 2005 convention, Gary Hemmingway has been appointed to the position. The 2005 convention in Topeka is going well, attendees are lower than expected, 2006, in Council Bluffs, Iowa is also underway. Many of the tours are awaiting final details, but are in place. The convention facilities and hotel are already contracted for the event. The BOD will be looking for bids in June for the 2007 convention. Divisions or Areas should contact Gary Hemmingway.

Caboose Kibitzer Editor Charles Marchbanks has resigned, Richard Napper filled in temporarily and Bob Jefferis is now the appointed Editor. Bob will work with Richard and others to maintain the publishing schedule.

New Business

Marty Vaughn MMR, AP Chairman reported that there have been 7 AP Certificates processed for MCoR, 2 Golden Spike Award, and 0 new MMR.

A break was called by President Richard Napper MMR at 1:36 P.M. The meeting was reconvened by President Richard Napper MMR at 1:45 P.M.

Old Business

The car project committee reported that they have researched an Intermountain Box Car Kit for this project. The committee recommends a 300 car run in 4 numbers, 300 is the minimum initial order. The paint scheme that will be Rock Island, artwork was presented. The manufacturer will be Intermountain. A motion was made by Paul Meyers to proceed with a 400 car run in four numbers. The motion was seconded by Barry Quensel. PASSED

It was suggested that we investigate the possibility of having the Caboose Kibitzer online in PDF format available to members using a secure web page as well as in print to those who subscribe. An online Subscription fee will be determined at a later date after we determine what is required. A motion was made by John Averill to proceed. The motion was seconded by Alan Merta. PASSED

A motion was made by Larry Alfred MMR that the subscription fee for the Caboose Kibitzer will be set at \$6.00, per year for a printed copy. The motion was seconded by Jim Anderson. PASSED

Several Divisions presented new documents for MCoR approval. It is expected that there will be more Divisions doing so before the 09-01-05, National changes. A motion was made by John Averill to approve these documents pending legal review by the MCoR attorney. This approval is extended to revisions and additional documents presented by any MCoR Division prior to 09-01-05. The motion was seconded by Barry Quensel. PASSED

The MCoR election results were published to the BOD via email. A motion was made to accept the results as published by Paul Myers. The motion was seconded by Jim Anderson. PASSED

Mailing procedures for MCoR ballots was discussed. A motion was made to use first class postage on all MCoR election ballots by Larry Alfred MMR. The motion was seconded by John Averill. PASSED

A motion was made by Alan Merta to destroy the 2005 ballots. The motion was seconded by Steve Marquess. PASSED

Meeting adjourned 2:46 P.M.

Respectfully submitted,



Whitney D. Johnson
MCoR Secretary

Summer 2005 CK

KC Rail Experience By Bob Jefferis

The *KC Rail Experience* – a new railroad museum - will open Saturday & Sunday, September 24 & 25 at Union Station Kansas City. While it won't be *complete* by then, there will be lots of things going and happening. We'll have – subject to the kind of things that happen involving operating steam locomotives now days – the Milwaukee 261 (4-8-4) to run steam excursions both days and the Southern Pacific 745 (2-8-2 from the Louisiana Steam Train Association) to be under steam on exhibition. Union Station owns and will continue to display their Kansas City Southern 34, an FP-9 painted in post-war KCS colors. The museum will include an SD40-2 locomotive simulator

from the BNSF, painted by them in current locomotive colors. Also a display train (that probably won't all be here that weekend) consisting of a Milwaukee (post-war colors) F-7, an RPO, a sleeper, a diner and a Great Northern observation lounge. There will be about 20 costumed, life-size figures that will talk with you about what they did on the railroad. Eventually there will be operating models, also.




For the opening weekend there will be an extra-fare event model train show, sponsored by Train Town that will occupy most of what some call the "North Waiting Room" and others call "Sprint Festival Plaza".

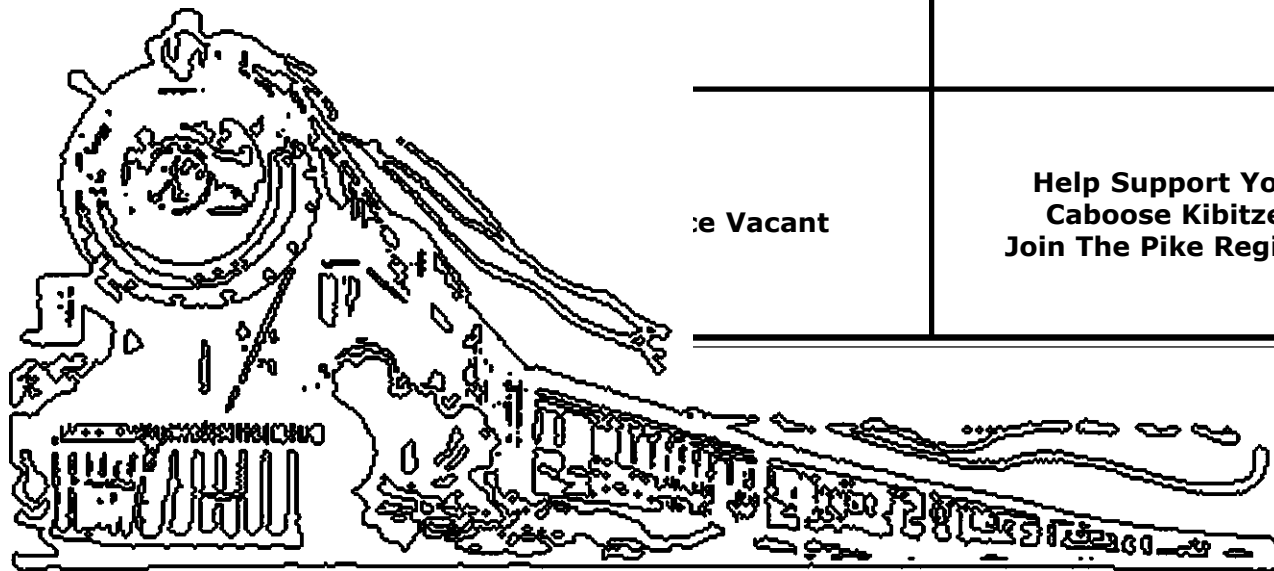
For up to date information as it becomes available, go to www.unionstation.org.

Pike Registry

 <p>Sn3, of course</p> <p>Pete Bellos President Shawnee, Kansas</p>	 <p>EDWARD H. HARRIMAN JAMES J. HILL HARRIMAN-HILL SYSTEM OLIVER DEE JOSEPH, CEO 618-397-0823</p>	<p>(417) 883-5350</p> <p>FRISCO</p> <p>RON WILLIAMS, MMR PRESIDENT</p> <p>ST. LOUIS - SAN FRANCISCO RAILWAY COMPANY 3129 S. CHAMBERY AVE SPRINGFIELD, MO 65804</p>
<p>C&RM RR Canyon & Rocky Mountain RR</p> <p>President Randolph P. Meyer 156 Ladue Oaks Dr. Creve Coeur, MO 63141</p>	<p>Baker Creek & Sun Valley RR</p> <p>911 Queensbridge Road Manchester Mo 63021</p> <p>Ken Thompson, President</p>	<p>Missouri Pacific Lines White River Division</p> <p>DAVID BOGARD District Superintendent Maumelle, Arkansas Phone 1-(501)-851-6278 MoPac55@hotmail.com</p>
<p>PR & SR RR Pleasant Ridge and Shelter Rock Railroad</p>  <p>Thomas B. Dole President and Owner</p> <p>1796 Commodore Walk Worden, Illinois 62097 (Holiday Shores)</p> <p>HO Scale Telephone: (618) 659-0684</p>	 <p>SHELTER BAY RAILWAY CORPORATE HEADQUARTERS 9331 FARLEY LANE OVERLAND PARK, KANSAS 66212</p> <p>1913)888-4080</p> <p>G. PATRICK HARRIMAN, MMR PRESIDENT CHIEF OPERATING OFFICER</p>	<p>NEBRASKA & SOUTHERN RAILROAD</p>  <p><i>"Links The Gulf Coast"</i> <i>"The Way South"</i></p> <p>GENE R. TACEY SUPERINTENDENT P.O. BOX 485 SUTHERLAND, NE 69165 308-386-2489 taceys@gpcom.net</p>
<p>UNION PACIFIC RAILROAD</p>  <p>CHARLIE STAPLETON General Superintendent Kansas Division</p> <p>1411 N. 79th St. Kansas City, KS 66112</p> <p>HO Scale 913-299-2923</p>	 <p>Loon Lake Railway & Navigation Co.</p> <p>Peter B. Smith Receiver</p> <p>4317 Mahogany Lane, Belleville, IL 62226 Tel. 618 277 5518 E-Mail: psmith@apol.net</p> <p>Sn3</p>	 <p>Central Missouri & Southern RR Co. Osage Valley Tie & Lumber Co. Mike Chambers, General Supt. micham21@southnet.net</p> <p>Headquarters 1304 Telford Dr. Liberty, MO 64068</p> <p>Osage River Division Lake Rd. S-16 Greene Mills, MO 65031</p>
<p>Gü's Box & Satori Railroad "The Road to Enlightenment"</p> <p>Rudolph Günter, founder</p> <p>Robert F. Guenter Maintenance Foreman 714 So. 33rd Street Lincoln, NE 68519</p> <p>Phone: (402) 476-8811</p> 	 <p>MR. DENNIS O. SMITH</p> <p>DEERBROOK & SALTERN RAILWAY CO. THE IRON ROAD</p> <p>650 SOUTH YORK COURT Springfield, MO 65802</p> <p>WINTER QUARTER #104</p> <p>P.T. BARNUM & D. SMITH RAILROAD CIRCUS</p>	<p>The Final Solution Railroad</p> <p>FI-SOL</p> <p>Shannon Rumley President</p> <p>Springfield, Missouri 417-881-6477</p>
<p>PIPER VALLEY RAILROAD</p>  <p>PIPER CO-OP HEADQUARTERS 912 RIDGE DRIVE BELTON, MO 64012</p> <p>(816) 331-2773</p> <p>JOE B. ROBERTSON, MMR PRESIDENT & CEO</p>	 <p>PASS No. 3311</p> <p>TO: WESTERVILLE WESTERN CREEK & WESTERN RR WAY OF THE WEAVING WOBBLEY WEAVER BVG</p> <p>WESTSIDE SHERRY LINE LOOSING CO. INC. SERVING ALL LOADING ROADS</p> <p>HO SCALE</p> <p>SHOP FOREMAN • BILL WEAVER • PHONE 501-253-9325 542 CR 241, ROARK ROAD, EUREKA SPRINGS, AR 72632</p>	<p>FORKS CREEK AND CENTRAL RAILROAD</p>  <p>Ron Morse, MMR 8324 Hall Dr. Lenexa, KS 66219 (913) 894-6472 rdmorse1@juno.com</p> <p>"ROUTE OF THE COUGARS"</p>
<p>MCoR NMRA</p>  <p>Clear Creek & Quicksilver "The Mountain Goat"</p> <p>Allen Follock P.O. Box 243 General Manager Jefferson City, MO 65102</p>	 <p>SYCAMORE VALLEY LINES 544 E. SPRUCE OLATHE, KANSAS 66061-3357</p> <p>(913) 782-8553</p> <p>GEORGE & MARY FILKINS</p>	<p>Missouri Pacific Lines</p>  <p>Robert Joseph Amsler, Jr. 5630 Arenas Drive St. Louis, MO 63116</p>

Pike Registry

<p>St. Jacques Northern Division of Great Northern Pacific Railway</p> <p>John Hardy Division CEO <i>The Big River Line</i></p> <p>2528 Wild Valley Drive Telephone High Ridge, MO 63049 314-677-8270</p>	<p> WESTERN PACIFIC</p> <p>Industrial Switching In Northern California</p> <p><i>Steve Newland</i> Yardmaster</p> <p>303 W. 1st Ave. Garnett, KS 66032 (785)448-1627</p>	<p> BIG TIMBER LUMBER COMPANY <i>The Big Sky Route</i></p> <p>DEAN WINDSOR CHIEF EXECUTIVE OFFICER</p> <p>14395 FOUR CORNERS RD GARDNER, KANSAS 66030</p>
<p>HEARTLAND WORKSHOP</p> <p>Danville, Iowa <i>Est. 1999</i></p> <p>Ken and Carol Vandervoort</p>	<p>RI MASON ROAD SPURS a division of the ROCK ISLAND LINE</p> <p>Gene Coffman 541 N. Mason Rd. 314-469-4882 St. Louis, MO 63141</p>	<p> PSEUDO-SOO LINE</p> <p><i>"The Swamp Level Route"</i></p> <p>Home of the Swamp Gas Gang</p> <p>Bob Johnson—Head Gasser St. Peters, MO 63303 (636) 922-2507 bjohnson2000@earthlink.net</p>
<p> Barry M. Quensel President</p> <p><i>The Alton Route</i></p> <p>480 SE Lasso Loop Phone: (580) 351-2037 Lawton, OK 73501 e-mail: QuBert1@aol.com</p>	<p>John Shaw Layout in Progress</p>	<p>RIO GOLARE SOUTHERN</p> <p>Southeastern Division FEATURING ON-DECK SERVICE</p> <p>G Tedy Bellos Director Shawnee, Kansas</p>
<p>This Space Vacant</p>	<p>Help Support Your Caboose Kibitzer Join The Pike Registry</p>	<p>Reserved for Jim Flynn</p>
<p>This Space Vacant</p>		<p>Help Support Your Caboose Kibitzer Join The Pike Registry</p>



DEALER DIRECTORY

<p>Fun & Games <i>"the people people"</i> www.scalefigures.com</p> <p>P. O. Box 243 1040 Myrtle Ave. Jefferson City, MO 65102 Telephone: 573-635-6163 FAX: 573-635-9680 allen@scalefigures.com</p> <p>Allen Pollock owner</p>	<p> MORSE PRODUCTIONS MODEL RAILROAD CASTINGS & DETAIL PARTS</p> <p>8324 HALL DR. LENEXA, KS 66219 913-894-6472 rdmorse1@juno.com</p>	
---------------------------------------------------------------------------------------------------------------------------------------------------------------------------------------------------------------------------------------------------------------------------------	----------------------------------------------------------------------------------------------------------------------------------------------------------------------------------------------------------------------------------------------------------	--

Region Club Roster

This roster was created for the benefit of members of the Mid-Continent Region. It identifies those clubs that are presently active in MCoR. Any group that wishes to be included in the listing should send the editor the clubs name, contact address and scale interest.		Northwest Kansas Model RR Club 603 S. Smokyhill Oakley, KS 67748-2321
Arkansas Valley Model RR Club (HO,HOn3,O 2rail, On3, S, Sn3, and Large scale) 7 Chaparral Lane Little Rock, AR 72212-3619	KC O-Scale Modulares (O) 10334 Ash Overland Park, KS 66207	Ozark Model RR Assoc. (all) 424 W. Commercial Springfield, MO 65803
Big Bend Railroad Club (O) 8833 Big Bend Boulevard Webster Groves, MO 63119	Kansas City S Scalpers (S,Sn3) 11519 N. Wayne Ave. Kansas City, MO 64155-2914	Parsons Model RR Engineers (HO) Cherryvale Depot Cherryvale, KS 67335
Capital City Model RR's (HO) P.O. Box 243 Jefferson City, MO 65102	Manhattan Area Rail Joiners 1223 Pierre Street Manhattan, KS 66502-4331	Quincy Society of Model Engineers (HO, HOn3) 2232 E. Huntington Quincy, IL 62301 qsme@rrmail.com
Claremore & Southern (HO) 3049 Clover Creek Drive Claremore, OK 74017	Mississippi Valley N Scalpers (N) PO Box 460161 St. Louis, MO 63146 http://mvns.railfan.net mvns@railfan.net	Society of Model Engineers (HO,N) 5715 W. 81 st Street Prairie Village, KS 66208
Columbia Model RR's (HO) 410 Camelot Drive Collinsville, IL 62234	Missouri Northern RR Society Inc. (HO) P.O. Box 12591 North Kansas City, MO 64116	Southern Illinois Train Club (HO,N,G) P.O. Box 1633 Marion, IL 62959-7833
E. Jackson City Mainliners (HO) 807A Main Street Blue Springs, MO 6415	Modular HO Narrow Gauge Society 914 Summer Leaf Ct. St. Peters, MO 63376	SW Independent Modular RR's (HO) 3107 W. Capitol Little Rock, AR 72209
Gold Creek RR Co. (1/2") 8324 Hall Lenexa, KS 66219	Mo-Kan Railjoiners Inc. (all) 14906 W 150 th Street Olathe, KS 66062	The Sugar Creek Model Railroad & Historical Society, Inc. (All N Modules for shows) P.O. Box 5452 Bella Vista, AR 72714
Kansas Central MRRC (HO), 530 E. 3 rd Street Hutchinson, KS 67501	Nishna Valley MR Society (HO) 1303 8 th Street Harlan, IA 51537 Northeast	Tri-City Model R.R. Association (HO,N) 607 South Shore Drive Hastings, NE 68901
Kansas Area N-Trak (N) 2046 S. Elizabeth #1306 Wichita, KS 67213	Northeast Kansas Garden Railway Society (NEKAN-GRS) 1308 SW Caldon Topeka, KS 66611-2412	Wichita Model Railroad Club (HO, HOn3) P.O. Box 48082 Wichita, KS 67201

Cover

The Kansas City Southern 34 is an FP9A unit, formerly KCS #4, and is pictured outside Kansas City Union Station on May 20, 2005. It is painted in the (post-WWII) Southern Belle colors and was one of the units (the spare) for the KCS Southern Belle business train. The locomotive, with its new paint job, was donated to Union Station by the KCS and is to be part of the new railroad center coming to Union Station and opening September 24 & 25. Photo is by Don G. Campbell, Historian for the Kansas City Chapter of the National Railway Historical Society and leading KCS railfan. The lower photo is the Southern Belle, Business Train for the Kansas City Southern, pictured December 28, 1998, in the eastern Kansas City yards near Front Street and Manchester. Photo by Bob Jefferis

Coming Attractions

In the Fall Issue we'll have an interesting article from Marty Vaughn on *Prototype AP Modeling* and one on building a CB&Q Class GA-2 Gondola from a Red Caboose Model By Gene R. Tacey. Also a practical one from John O'Neill on installing an *Atlas Switch Machine* beneath your tabletop. Oh, and a railroading poem by *Ogden Nash*.

Bob Jefferis

Advertising Rates

MCoR invites you to consider the Caboose Kibitzer for your advertising. This magazine serves over 800 National Model Railroad Association members in our seven-state area of Iowa, Nebraska, Kansas, Missouri, Illinois, Arkansas and Oklahoma.

Our Commercial advertising rates are as follows:

Ad Size	Cost per year (4 issues)
9 1/2" x 7 1/4"	Full Page \$120.00
4 3/4" x 7 1/4"	Half page..... 70.00
4 3/4" x 3 1/2"	Quarter Page 38.00
2 1/2' x 3 1/2"	Eighth Page 22.00
2" x 3 1/2"	Business Card 15.00

Dealer Directory:

1 3/8" x 2 3/8" Business Card 10.00

Pike Registry Ads:

1 3/8" x 2 3/8" Business Card 5.00

Advertising Index

Kate Shelley Division Train Meet 7
Dealer Directory 21

The editorial staff hopes that our readers will make an effort to patronize establishments that advertise in the Caboose Kibitzer. It is in the best interest of all parties concerned, since the quality and availability of this publication is directly related to: 1) Regional interest and participation in NMRA and MCoR, and 2) the level of commercial support which it receives in the form of advertisements.

Single issue Commercial ad rate is 35% of the yearly rate. Want ads are free to current MCoR members. They are subject to available space and acceptance at the discretion of the editor, and are limited to 25 words or less.

Ads need not be identical throughout the year. Prices listed above are for **camera-ready copy**. Design and 'typesetting' services are available on request at extra cost. **All inquiries and payments should be sent to the Advertising Manager: Louis Seibel, 1069 N. Logan, Olathe Kansas 66061. Make checks payable to the Mid-Continent Region.**

NMRA and Mid-Continent Region Membership Application and/or Renewal Form

Name _____ Phone _____

Street Address _____

City _____ State _____ Zip _____

NMRA Member Number _____ MCoR Member Number _____

Primary E-mail Address _____ Preferred Phone (____) _____

\$ _____ is enclosed for **combined** NMRA, Mid-Continent (MCoR) and Division dues. Please note that as of September 1, 2005, **all** members of NMRA (the national organization) are also members of both the MCoR and their nearest Division. This is for a New [] Renewal [] membership.

Regular Member one year - \$45.00 [] two years \$90.00 []

Youth (must be a full time student) \$ 30.00 []

Family Member (see note below) \$9.00 []

Affiliate Member (see note below) \$23.00 []

Sustaining Member one year \$90.00 []; two years \$180.00 []

Membership includes subscriptions to *Scale Rails* (the NMRA Bulletin) and *The Handcar* (MCoR Region newsletter) **except as noted**. They do **not** include subscriptions to *Caboose Kibitzer* (now the MCoR modeling magazine - to be available either in hard copy or electronically) or your Division newsletter.

NMRA and MCoR Life Memberships are no longer available.

Please make out you remittance to: National Model Railroad Association.

Send your Application or renewal to: NMRA; 4121 Cromwell Road; Chattanooga, Tennessee 37421.

Notes:

Affiliate Members and Family Members do **not** receive any publications.

A Family Member is a spouse or minor child of a member in good standing.

Mid-Continent Region
3073 Meramar Court
St. Louis, Missouri 63129-5212

Non-Profit Org.
U.S. POSTAGE
PAID
Blair, NE
Permit No. 19



**TIME DATED MATERIAL
PLEASE DO NOT DELAY**



www.mcor-nmra.org

**MCoR ANNUAL CONVENTION
June 1st - 4th, 2006 Council Bluffs, Iowa**

**Mid-America Center
One Arena Way
Council Bluffs, IA**

**Info: Charles Fennen
15218 Gertrude
Omaha, NE 68138-6487
402-895-9556
cdejfennen@tconl.com**

