

Caboose Kibitzer

1ST QUARTER 2009

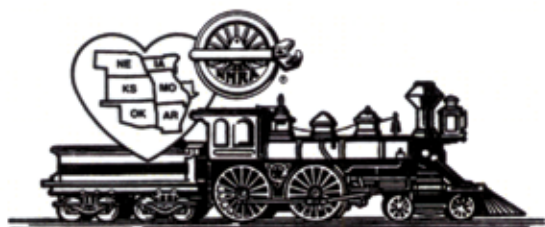
VOLUME 59, ISSUE 1



THE MARION KANSAS DEPOT IN RTR

- LARRY TIFFANY, BRASS PAINTER
- ATHEARN'S MARION DEPOT
- MID YEAR BOARD MEETING
- WICHITA CONVENTION INFORMATION





Mid-Continent Regional Convention/Wichita Northern Extra 2009

Hosted by the Chisholm Trail Division

JUNE 11-14, 2009 in Wichita, KS

Best Western Wichita Airport

6815 Kellogg (US 54) 316 942-5600 group # NMRA-MCoR 2009 rate \$79.99 +tax
Free Breakfast included in Room Rate

Activities planned for this year's meet include:

Door Prizes and Silent Auction - for all registrants.

Display Layout and Layout Tours - In addition to the display layouts at the meet, several local modelers will be opening their homes to layout tours Friday afternoon and evening. Layout tour maps will be available at registration.

Live Steam train trip - Live Steam train ride on Friday, June 12, 2009 Fare - \$10.00.

Model & Photo Contests - By NMRA judging.

Clinics - a full slate of clinics covering many aspects of the hobby. For Clinic registration contact Larry Alfred at lalfred2@comcast.net or Paul Richardson at purgatory@kc.rr.com.

Swap Tables and Railroad Groups - Approximately 80-100 tables for area dealers, local hobbyists and other railroad groups. For information on tables contact Richard Napper at renapper@wildblue.net or 785-582-4209.

Wichita, KS - Union Pacific & BNSF Railroads, Boeing, Wichita Zoo

Mid Continent Regional Convention / Wichita Northern Extra Registration Form

Advance Registration (until April 30, 2009) is: \$55.00 for the convention & banquet

Full Registration - NMRA (after April 30, 2009) is \$35.00 for the convention and/or \$25.00 for the banquet

Full Registration - Non-NMRA (After April 30, 2009) \$45.00

| | Number of attendees / tables | x | Cost | = | total |
|---|------------------------------|---|-----------------|---|-------|
| Advance Registration (before April 30, 2009) NMRA Members | | | \$30.00 | | |
| NMRA One Day Convention Registration | | | \$20.00 | | |
| Non-NMRA Convention Registration | | | \$40.00 | | |
| Non-NMRA One Day Convention | | | \$30.00 | | |
| Banquet(Children 12 and under: \$15.00) | | | \$25.00 | | |
| Swap Tables (maximum of ten) | | | \$15.00 | | |
| Live Steam Bus Fare | | | \$10.00 | | |
| Checks only(No Credit Cards) | | | Total Enclosed: | | |

Name _____ E-mail _____

Address _____ Phone _____

City _____ State _____ Zip code _____

Additional attendees _____

Please notify of Prototype tours: Yes ☐ No ☐

Make Checks Payable to: "Wichita Northern Extra 2009"

Caboose Kibitzer

Official quarterly publication
of the Mid-Continent Region
of the National Model Railroad
Association

www.mcor-nmra.org



Editor

Cynthia A. Priest
5106 NW Waukomis Drive
Suite A
Kansas City, MO 64151
(816) 746-6733
kibitzer@pairedrail.com

Associate Editor

Stephen M. Priest, MMR
5106 NW Waukomis Drive
Suite A
Kansas City, MO 64151
(816) 746-6733
kibitzer@pairedrail.com

Advertising Manager

Louis Seibel
1069 N Logan
Olathe, KS 66061-6321
(913) 393-3495
l-seibel@comcast.net

Submissions: The *Caboose Kibitzer* welcomes articles, photographs and other model railroad or railroad-related contributions. Contact the editor for more information.

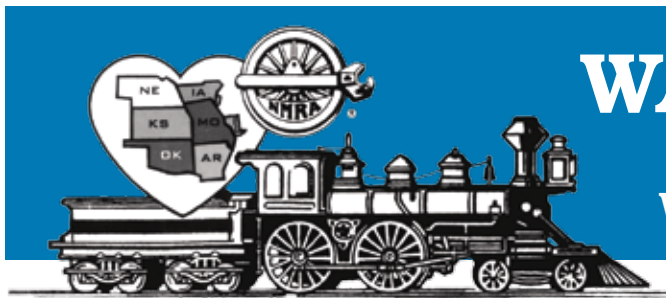
Advertising: All advertising inquiries should be directed to the Advertising Manager. MCoR reserves the right to refuse or drop advertising for any reason. Advertising in the *Caboose Kibitzer* in no way constitutes an endorsement by MCoR or the NMRA.

Deadlines: All materials submitted for publication must arrive no later than the dates listed below to be considered for inclusion in that issue:

First Quarter 2009 . . . January 1, 2009
Second Quarter 2009 . . . April 1, 2009
Third Quarter 2009 . . . July 1, 2009
Fourth Quarter 2009 . . . October 1, 2009

Membership: As of October 1, 2005, membership in the regional and local level is included in membership dues paid to the NMRA. The *Caboose Kibitzer* is available by subscription to MCoR members at a cost of \$12 per year for the print version, \$8 per year for the online version.

© 2009 Mid-Continent Region
Printed in the U.S.A.



WAYBILL

FIRST QUARTER 2009
VOLUME 59, NUMBER 1

FEATURES

| | |
|--|----|
| THE HAND CAR | 6 |
| Spring 2009 edition | |
| PAINTING BRASS | 10 |
| By Larry Tiffany | |
| BRANSON EXPRESS 2008 CONTEST WINNERS | 12 |
| MID-CONTINENT REGIONAL CONVENTION | 16 |
| Wichita Northern Extra 2009 Wichita, Kansas June 11-14, 2009 | |
| MARION, KANSAS, DEPOT IN HO | 19 |
| By Stephen Priest, MMR | |

DEPARTMENTS

| | |
|------------------------------|----|
| Callboard | 4 |
| The Head End | 5 |
| Conductor's Call | 5 |
| The Switching List | 9 |
| Advertising Rates | 15 |
| Pike Registry | 22 |
| Dealer Directory | 23 |



On the Cover:

The Marion, Kansas, depot was produced by Athearn as a RTR structure. These are still available and make a great addition to any model railroad.

SP SD40 1984 was painted for the Olympics to help promote and celebrate the event. Larry Tiffany discusses his painting history and skills with the staff of *Caboose Kibitzer*.

Both Stephen M. Priest, MMR photographs

CALLBOARD

President

Larry R. Alfred, MMR
14633 S Chalet Dr
Olathe, KS 66062-2527
(913) 782-6584
lalfred2@comcast.net

Vice-President

Richard Napper, MMR
7244 NW US Hwy 24
Topeka, KS 66618-5605
(785) 582-4209 Fax (785) 582-5268
renapper@wildblue.net

Secretary

Whit D. Johnson
1117 E 16th St S
Newton, IA 50208-5076
(641) 792-0712 Cell (815) 342-0301
whitjohnson@mchsi.com

Treasurer

John A. Shaw
225 Wasatch Court NE
Cedar Rapids, IA 52402-3386
(319) 265-8122 Cell (913) 636-3710
jashaw1@rockwellcollins.com



Mike Schafer Photograph

Membership Chairman

Richard Napper, MMR
7244 NW US Hwy 24
Topeka, KS 66618-5605
(785) 582-4209 Fax (785) 582-5268
renapper@wildblue.net

Membership Dispatcher

Richard Napper, MMR
7244 NW US Hwy 24
Topeka, KS 66618-5605
(785) 582-4209 Fax (785) 582-5268
renapper@wildblue.net

New Member Chairman

Richard Hester
1407 E Fair Acres Dr
McCook, NE 69001-4208
(308) 345-5528
richard_hester_51@msn.com

Member Aid Co-chairman

John H. Averill
14910 92nd Ln
Indianola, IA 50125-7261
(515) 961-3018
GMDMCoR@cs.com

Member Aid Co-chairman

John Plott
2109 Ave M
Council Bluffs, IA 51501-0968
(712) 323-7153
trains20@cox.net

Achievement Program Chair

Marty Vaughn, MMR
234 Meadowbrook Ln
Wellsville, KS 66092-8100
(785) 883-4468
wmvaughn@mchsi.com

Education Chairman

Don Wetmore
614 Osage Dr
Papillion, NE 68046-2433
(402) 740-9642
StJoeTerminal@cox.net

Merit Badge Coordinator

David Engle
11519 N Wayne Ave
Kansas City, MO 64115-2914
(816) 734 8949

Internet Webmaster

John A. Shaw
225 Wasatch Court NE
Cedar Rapids, IA 52402-3386
(319) 265-8122 Cell (913) 636-3710
jashaw1@rockwellcollins.com

Convention Chairman

Larry R. Alfred, MMR
14633 S Chalet Dr
Olathe, KS 66062-2527
(913) 782-6584
lalfred2@comcast.net

2009 Convention Chairman

Philip R. Aylward
603 Chestnut St
Halstead, KS 67056
(316) 830-3498
aylward1@cox.net

Area Meet Chairman

Gary Hemmingway
3201 SW Stone Ave
Topeka, KS 66614-2823
(785) 273-3350
garyonho@cox.net

Clinic Chairman

Don Wetmore
614 Osage Dr
Papillion, NE 68046-2433
(402) 740-9642
StJoeTerminal@cox.net

Model Contest Chairman

Whit D. Johnson
1117 E 16th St S
Newton, IA 50208-5076
(641) 792-0712 Cell (815) 342-0301
whitjohnson@mchsi.com

Photo Contest Chairman

Rick W. Liebich
PO Box 285, 121 Main St
Rippey, IA 50235-0285
(515) 436-7765
mliebich@iastate.edu

Rev. 3-26-09

BOARD OF DIRECTORS

Indian Nations Division

Ed Bommer
14050 North 246 Road
Okmulgee, OK 74447-9344
(918) 759-0705
edb8391@ecweb.com

Turkey Creek Division

Bill Morneau
7705 West 154th Terr.
Overland Park, KS 66223-2280
(913) 897-0669
bmorneau@kc.rr.com

Kate Shelley Division

Bob Folkmann
1326 Burnett Ave.
Ames, IA 50010-5454
(515) 232-8689
rfolkmann@mchsi.com

Eastern Iowa Division

George S. Malcolm
1508 12th Ave
Coralville, IA 52241-1102
(319) 338-7755
gsmalco07@aol.com

Western Heritage Division

Doug Good
6963 Cuming St
Omaha, NE 68123-1013
(402) 932-6864
dlgood@cox.net

Kansas Central Division

Richard Napper, MMR
7244 NW US Hwy 24
Topeka, KS 66618-5605
(785) 582-4209 Fax (785) 582-5268
renapper@wildblue.net

Chisholm Trail Division

Philip R. Aylward
603 Chestnut St
Halstead, KS 67056-2302
(316) 830-3498
aylward1@cox.net

Maple Leaf Division

Steve Marquess
503 W Central Ave
Bentonville, AR 72712-5246
(479) 273-3175
sjmarqu@quixnet.net

South Central Missouri Area

Dennis M. Brandt
1004 S Third St
Norfolk, NE 68701-6302
Cell (402) 992-2415
dennisbrandt44@gmail.com

Gateway Division

Jim Anderson
329 Hill Trl
Ballwin, MO 63011-2654
(636) 394-1305
andersjd@swbell.net

Ozark Mountain Area

James F. Dimatteo
190 Western Ave
Branson, MO 65616-8618
(417) 239-0436
jbdimatteo@aol.com

Northern Arkansas Area

Unassigned

Little Rock Area

Unassigned

Cowboy Line Division

Dennis M. Brandt
1004 S Third St
Norfolk, NE 68701-6302
Cell (402) 992-2415
dennisbrandt44@gmail.com

Oklahoma Heartland Division

Barry M. Quensel
480 SE Lasso Loop
Lawton, OK 73501-2025
(580) 351-2037
QuBert1@aol.com

Northern Oklahoma Area

Dan L. Harris
PO Box 3604
Enid, OK 73702-3604
(580) 233-4452
harris_danl@sbcglobal.net

Western Kansas Division

Robert A. Simmons
2710 Shamus St.
Garden City, KS 67846-3251
(620) 521-0444
ras@odsgc.net

Platte Valley Division

John O'Neill
4112 W Faibley Ave
Grand Island, NE 68803-3327
(308) 384-5011
jponeill@computer-concepts.com

Iowa Rails Area

Michael E. Worley
320 E 13th St
Washington, IA 52353-2643
(319) 653-3782
meworley@iowatelecom.net

North Central Missouri Area

Mark Miller
1433 West Wood
Mexico, MO 65265-1176
(573) 581-5117
mark12195@yahoo.com

Rev. 3-26-09

Fallen Flags Division

Unassigned

Nebraska West Central Div.

Gene R. Tacey
PO Box 485
Sutherland, NE 69165-0485
(308) 386-2489
taceys@gpcom.net

Great Midwestern Division

John H. Averill
14910 92nd Ln
Indianola, IA 50125-7261
(515) 961-3018
GMDMCoR@cs.com

Southern Arkansas Area

Larry E. Kelso
1918 McCracken St
Stuttgart, AR 72160-6913
(870) 633-2280
larry@kelsomail.net



THE HEAD END

BY LARRY ALFRED, MMR
MCoR PRESIDENT

This issue of the *Caboose Kibitzer* is being received by all NMRA/MCoR members, regardless of each member's subscription status. For those not currently subscribing, this is an invitation to do so. I believe you will find the *CK* to be an interesting and valuable addition to your model railroading reading.

For this issue, I will get off my soap box, with the usual push for service to the organization and participation at the Region Conventions. Instead, I want to provide information about the annual service awards presented by the MCoR. I have been recently asked by several members to explain the basis for the three Region service awards. So, here they are.

The senior award presented by MCoR is the K. B. (Kenny) Johns Memorial Award. This is the highest honor that the MCoR can bestow on one of its members, with the recipient selected by the MCoR President. It was established in 1964 and is given annually "In Recognition of Outstanding

Service to the Mid-Continent Region and the Hobby of Model Railroading." Kenny John (I'll explain the missing "s" at another time) was a charter member of MCoR, served as Secretary/Treasurer, and was an active participant in every Region convention from the first one in 1949 until 1963, with his passing.

The Kenneth R. Cline Memorial Award was established in 1980 and first presented in 1981. This award is presented annually "In Recognition of Outstanding and Dedicated Service to the Mid-Continent Region, the NMRA, and the Hobby of Model Railroading." Recipients of this award are selected each year by a committee made up of the past three recipients. Kenny Cline served the MCoR as Secretary/Treasurer, Vice-President, and then President, passing away in office in 1979. He has been the only MCoR President to die in office.

The Larry R. Long Memorial Award was established in 1999 and first presented in 2000. This award is presented annually "In Recognition of Dedicated Service as the Mid-Continent Region's Division Volunteer of the Year." Its intent is to recognize outstanding service at the division level. In the beginning, recipients for this award were selected each year by a committee of seven of Larry's closest friends. As of 2009, the selection procedure was changed, so that the past three recipients now select the next. Larry was active in the NMRA for many years, serving in many positions at the Division, Region, and National levels, including MCoR President

and MCoR representative on the NMRA Board of Trustees. Larry was very interested in the development and success of the Division concept for the Region. I knew Larry very well; he, Pat Harriman, and I were the driving force that brought the 1998 National Convention to Kansas City. It was so unfortunate that Larry couldn't have seen the convention come to final fruition.... after over five years of our planning and organizing, he passed away a few months before the convention was held.

So, there, briefly, are the bases for the three MCoR service awards. These individuals all have provided important service to the Region and played an important role in the history of the MCoR. There are many others of you out there that also work hard at providing service at all levels of the organization, and we are all indebted to you for it. As for me, thank you!

The last item is to encourage everyone to give serious consideration to attending the MCoR Convention in Wichita from June 11-14, 2009. It should be a great event. If you haven't attended a Regional Convention recently, you have been missing wonderful opportunities to enjoy the hobby of model railroading, see old friends, meet new ones, and just have fun! Further information regarding specific planned events and registration are included elsewhere in this issue and on the MCoR website.

Until next time, Happy Railroading!
Larry

CONDUCTOR'S CALL

BY CINTHIA PRIEST, EDITOR

This year's regional convention is in Wichita, Kansas, from June 11-14. Inside this issue you can read about the events and activities planned for your enjoyment. My husband, Stephen (editor of *Scale Rails*), and I will be there. We hope to have an opportunity to talk to many of you about all things model railroading. There will be many

talented modelers at the convention showing off their modeling efforts as well as providing excellent clinics. There's still time to register for the event. See inside for more detailed information or visit the convention web site at : http://www.mcor-nmra.org/Conventions/MCoR_2009_Convention.html. I hope to see you there in June!



This publication, The Handcar, is prepared by the MCoR President twice each year and distributed to all Region members, regardless of the member's *Caboose Kibitzer* subscription status. It contains information of potential interest to all members, including the minutes from the MCoR Board of Directors meetings, held twice each year. The mid-year MCoR Board of Directors meeting was held in Kansas City on January 10, 2009.

For those of you that attend model railroad meets/shows/conventions, I hope you didn't miss the MCoR Convention held in Branson, Missouri, last summer. It was a huge success, with approximately 100 registrants participating in the fun! If you weren't there, you missed a good one. Details for the 2009 MCoR Convention are taking shape. The convention will be held in Wichita, Kansas, from June 11-14, 2009. Phil Aylward and his Chisholm Trail Division group are planning a great convention! If you haven't been to a MCoR Convention for a while, you should think hard about attending. Information and registration forms are included in this *Caboose Kibitzer* issue and are posted on the MCoR website. Also, keep in mind that the 2010 convention will be hosted by John Shaw and his Eastern Iowa Division group in Cedar Rapids, Iowa. Watch for more information as time goes on.

My first year in office has passed quickly. It continues to be my privilege to serve all of you in the MCoR. I have said before, and I say again, I believe we have the best and most active region in the entire NMRA organization! One example of this is our very active Achievement Program. See below the most recent certificates received by your fellow members. Congratulations to all! The success of this program is due in large part to the efforts of Marty Vaughn, MMR. Good job, Marty!

I have always been a strong believer in good communication. If you have something about the Region that is troubling you, please let me know. I will try to help if I can. In addition, I encourage you to communi-

cate, as appropriate, with your Division or Area Director. These people are listed in the *Caboose Kibitzer* and/or on the MCoR website www.MCoR-NMRA.org.

Until next time.....Happy Railroading!

Larry Alfred, MMR, MCoR President

MCoR BOARD OF DIRECTORS MEETING

Johnson County Library Overland Park, KS, January 10, 2009

The regular meeting of the Board of Directors of MCoR was called to order at 10:11, January 10, 2009, in the meeting room at the Johnson County Library in Overland Park, Kansas. The presiding officer was President Larry Alfred, MMR. A quorum was present, including the following officers and members:

Larry Alfred, MMR
MCoR President

Richard Napper, MMR
MCoR Vice President, Kansas Central Div. Director,

John Shaw
MCoR Treasurer, Webmaster

Whit Johnson
MCoR Secretary, MCoR Contest Chairman

Brad Morneau
Turkey Creek Division Director

John O'Neill, MMR
Platte Valley Division Director

Edward Bommer
Indian Nations Division Director

John Averill
Great Midwestern Division Superintendent

Jim Anderson
Gateway Division Director

Dennis Brandt

Cowboy Line Division Director

Barry Quensel
Oklahoma Heartland Division Director

Phil Aylward
Chisholm Trail Area Director

Robert Amsler
MCoR Attorney

Louis Seibel
MCoR Advertising Chairman

Marty Vaughn, MMR
MCoR AP Chairman

Paul Myers, MMR
MCoR Convention Department Chairman

Larry Diehl
MCoR Member

Stephen Priest, MMR
Scale Rails Editor

Cynthia Priest
Caboose Kibitzer Editor

James Peters
MCoR Member

Robert J. Whintle, Jr.
MCoR Member

There were six proxies presented.

Whit Johnson for Robert Folkmann

Whit Johnson for Jim Dimatteo

John O'Neill for Gene Tacey

John Shaw for Clark Cooper

Larry Alfred for Doug Good

Robert Wintle, Jr. for Steve Marquess

Last Train Ride was announced for: Pete Bellos, Art Reardon, Merrill Bessie, John Hardy's wife, Richard Napper's mother,

Leftage Hale, Thomas Phillips, Donald Johnston, and Joshua Fennen.

The minutes of the May 2008 BOD meeting were published by Whit Johnson, MCoR Secretary. A motion to accept the minutes of the May 2008 BOD Meeting was made by John Averill, seconded by Bob Wintle.

PASSED

Treasurer, John Shaw, provided a printed report on MCoR Finances. A motion to accept the report as presented was made by Ed Bommer, seconded by John Averill.

PASSED

Sales Manager Report was presented with no new sales since the last report. Patches are still in inventory.

A motion was made to continue with the MCoR Library donations at 25 percent of the investment income starting again with the 2008, going forward, by Ed Bommer, seconded by John Averill. There is \$360.00 to be used for 2008 donations.

PASSED

Directors Reports: Reports were presented as published with comments by Ed Bommer, Jim Anderson, Barry Quensel, and Dennis Brandt.

Membership Report was presented as published in the Handout. The column of Inactive Members will be changed to read Former Members.

Convention Committee: Paul Myers, MCoR Convention Committee Chairman addressed the BOD to report that the 2008 convention in Branson, Missouri, was a success. The \$500.00 seed money along with \$882.42 convention income has been sent to the MCoR Treasurer.

The 2009 convention will be held in Wichita, Kansas, with Phil Aylward (Chisholm Trail Division Director) as the Chairman. Phil reported that there will be a convention car for the 2009, convention. To date there are about nine pre-registrations received; several more will be paid at the end of this meeting. There needs to be a convention ad in the Spring issue of the *Caboose Kibitzer*.

The 2010 convention in Cedar Rapids, Iowa, was discussed. There is some individual concern with the registration fees. These opinions were expressed, but it is the host committee that is responsible for

a successful convention. A preliminary flyer was presented for review to give everyone an example. A railfanning guide and a new MCoR/Convention Car will be available as well.

There is expected to be a proposal for the 2011 convention to be in Norfolk, Nebraska, presented at Wichita, KS BOD Meeting.

Cynthia Priest was present to discuss her new position as the *Caboose Kibitzer* Editor, the progress to date, and goals going forward. The Winter 2008 issue is at the printer. The next issue is in process and submissions are needed. There will be room for a Handcar in the next issue along with a 2009 MCoR Convention advertisement. Please use TIFF, RAW, or high resolution JPG photo format with cameras set to the highest resolution possible.

The AP report was published in the handout. This report has some of the highest activity reflected to date. Some of the highest numbers are within the Divisions that have had increased activity.

The Election Committee report was presented as published. Due to mailing issues the previous deadline set by the Nominations Committee for biographies was December 1, 2008, and has been moved to January 31, 2009.

MCoR President Larry Alfred called for a break at 11:55.

MCoR President Larry Alfred called the meeting back to order at 12:15.

The Election Committee discussion continued. A motion was made to change the wording in the MCoR Regulations Article IV Section 2, from requiring first class postage on MCoR ballots back to the original wording stating, "All matters involving the policies of MCoR, as the Board of Directors shall decide, and the election of Officers shall be submitted to the general membership for a direct vote by mail ballot or any other method permitted by law.", by Whit Johnson, seconded by John Shaw.

PASSED

A Motion to change the Regulations Article V Section 1 Paragraph C Sentence 2 from, "This petition, along with a statement of qualifications not exceeding 200 words, shall be submitted to the President who will in turn transmit it to the Nominating Committee

for action." to, "This petition, along with a statement of qualifications not exceeding a length established by the Secretary, shall be submitted to the President who will in turn transmit it to the Nominating Committee for action." was made by Whit Johnson, seconded by John Averill.

PASSED

Webmaster report was published. John Shaw (Webmaster) reminded everyone that space is available to Divisions for a web page.

There was no Heart of America Fund Report received from NMRA. Bob Amsler Region Attorney has been asked to follow up on this item.

MCoR Awards, the Larry Long Award selection procedure has been changed effective with the Wichita Convention. The previous three recipients will select the next recipient starting with the 2009 recipient. An article would be nice to explain the Region awards and how they are selected.

Bob Amsler reported that the LRP Committee is planning to meet later this spring and continue to work on this project.

John Shaw presented the information on the next MCoR car project. The details were published in the BOD Handout. The car will be a CRANDIC (Cedar Rapids and Iowa City), gondola that was actually used in interchange service. This car is planned for release in conjunction with the 2010 Convention in Cedar Rapids, Iowa.

Old Business
None

New Business

A motion was made to accept the petition for Charter and the Documents for the Oklahoma Heartland Division pending approval of the MCoR Attorney on the Documents by John Averill, seconded by Ed Bommer.

PASSED

John Averill gave a presentation on a project that the Warren County Modular Club has taken on, in conjunction with the Warren County Historical Society. They are working to build a display of Railroading within Warren County, Iowa, with some historical activity. This is a 100% NMRA Club and they are requesting a grant to aid in this large project. The details of the grant

request were published in the BOD Handout. Discussion followed. John Shaw made a motion to create a committee to review the Grant request. The committee is to review the entire project and its budgetary impact to the MCoR and present a report for decision to the next BOD Meeting at Wichita, Kansas, in June 2009.

PASSED

The committee is John Shaw, Bob Amsler, Steve Priest, and Whit Johnson.

Zip Code and MCoR boundaries were discussed. John Shaw, Richard Napper, John Averill, and Whit Johnson were appointed to serve on a committee to address the MCoR and TLR Boundary question.

Motion to adjourn was made by John Averill, seconded by Barry Quensel.

PASSED

Meeting adjourned 13:38

Respectfully submitted,



Whitney D. Johnson

MCoR Secretary

ACHIEVEMENT PROGRAM REPORT

Since the last report published in the Hand Car, the following certificates have been earned.

GOLD SPIKES

| | |
|-------------------|-------------------------|
| George Malcolm | Eastern Iowa Division |
| Steve Meseraull | Turkey Creek Division |
| James Ballinger | Turkey Creek Division |
| Greg Ohlmacher | Turkey Creek Division |
| Gregory Gilroy | Turkey Creek Division |
| Jack Rosenfield | Turkey Creek Division |
| Robert McBean | Turkey Creek Division |
| James M. Peters | Maple Leaf Division |
| Philip G. Bonzon | Gateway Division |
| Edward F. Bommer | Indian Nations Division |
| David J. Salamon | Indian Nations Division |
| Robert A. Simmons | Western Kansas Division |

AP CERTIFICATES 48

| | | |
|----------------------|----------------|-------------------------------|
| Howard Junker | Scenery | Platte Valley Division |
| Tony Bowen | Volunteer | Eastern Iowa Division |
| Robert Wintle | Volunteer | Maple Leaf Division |
| Donald Taschner | Civil Engineer | Gateway Division |
| Donald Taschner | Electrical | Gateway Division |
| Sherman Luhn | Dispatcher | Platte Valley Division |
| Paul Myers | Official | Turkey Creek Division |
| Mark Malmkar | Dispatcher | Platte Valley Division |

| | | |
|------------------|----------------|------------------------|
| Gary Hankins | Structures | Turkey Creek Division |
| Gary Hankins | Electrical | Turkey Creek Division |
| Brad Morneau | Electrical | Turkey Creek Division |
| Brad Morneau | Civil Engineer | Turkey Creek Division |
| Brad Morneau | Dispatcher | Turkey Creek Division |
| Peter Jaynes | Volunteer | Eastern Iowa Division |
| Tony Bowen | Cars | Eastern Iowa Division |
| James Ballinger | Electrical | Turkey Creek Division |
| John Carty | Motive Power | Gateway Division |
| John Carty | Cars | Gateway Division |
| John Carty | Structures | Gateway Division |
| Howard Junker | Structures | Platte Valley Division |
| Gary Davidson | Dispatcher | Turkey Creek Division |
| Marty Vaughn | Civil Engineer | Turkey Creek Division |
| Gary Hankins | Dispatcher | Turkey Creek Division |
| Paul Myers | Dispatcher | Turkey Creek Division |
| Tony Bowen | Scenery | Eastern Iowa Division |
| John O'Neill | Official | Platte Valley Division |
| Lester Lorhan | Structures | Platte Valley Division |
| James Wells | Author | Platte Valley Division |
| Ben Merta | Volunteer | Eastern Iowa Division |
| Tony Bowen | Motive Power | Eastern Iowa Division |
| Robert Wintle | Civil Engineer | Maple Leaf Division |
| Robert Wintle | Scenery | Maple Leaf Division |
| Rich Mahaney | Volunteer | Eastern Iowa Division |
| Nick Brown | Volunteer | Eastern Iowa Division |
| Fran Hale | Scenery | Turkey Creek Division |
| Bret Overholtzer | Cars | Turkey Creek Division |
| Clark Cooper | Volunteer | Eastern Iowa Division |
| David Yetter | Scenery | Kate Shelly Division |
| Rich Mahaney | Author | Eastern Iowa Division |
| Philip G. Bonzon | Scenery | Gateway Division |
| Philip G. Bonzon | Prototype | Gateway Division |
| Lester Lorhan | Electrical | Platte Valley Division |
| Robert Perkins | Electrical | Eastern Iowa Division |
| David Bartz | Dispatcher | Gateway Division |
| George Malcom | Dispatcher | Eastern Iowa Division |
| Philip G. Bonzon | Structures | Gateway Division |
| Ben Merta | Dispatcher | Eastern Iowa Division |
| Philip G. Bonzon | Motive Power | Gateway Division |

I am also pleased to report to you that since the last Hand Car we now have three new Master Model Railroaders in the MCoR.

MASTER MODEL RAILROADERS 3

| | | |
|---------------------|---------|-----------------------|
| Donald Taschner | MMR 403 | Gateway Division |
| Tony Bowen | MMR 414 | Eastern Iowa Division |
| Bretton Overholtzer | MMR 415 | Turkey Creek Division |

Please congratulate all these members next time you see them, they have worked hard to earn these certificates. If you live in Area as opposed to a Division and are interested in participating in the AP program contact me and we'll find ways to help you get started.

Marty Vaughn MMR

MCoR AP Chairman



THE SWITCHING LIST

FIRST QUARTER 2009 BY GARY HEMMINGWAY

The Switching List contains all known Mid-Continent Region, NMRA, train shows and Division meetings. It also lists all known club shows and swap meets in the Mid-Continent Region (IA, IL, MO, AR, NE, KS, and OK). To list your event, send it to: garyonho@cox.net, or Gary Hemmingway, 3201 SW Stone Ave., Topeka, KS 66614. To subscribe, or unsubscribe, to The Switching List send an email to the above link. Look for us on the MCoR web site: www.mcor-nmra.org.

DIVISION MEETINGS

KANSAS CENTRAL DIVISION meets the 1st Saturday of even numbered months at 1 pm at various locations around the division area. For the full schedule check the MCoR website or email Gary Hemmingway: garyonho@cox.net. The next meeting is: April 4.

McPherson Museum/Mid-Kansas Model Railroad Club, 1130 E. Kansas St (US 56 Hwy) McPherson, KS: Hosts: John Snell, Michael Clark & Mid-Kansas Model RR Club. Coming East on I-70, take the I-135 exit to McPherson. Take the first exit into McPherson, US 56, turn right and travel about a mile and a half, across the overpass. About 2 blocks past the first traffic light on right after overpass. Look for sign.

EASTERN IOWA DIVISION next meeting Saturday, May 2, Hawkeye Model RR Club, Coralville, Iowa. 9AM, short business meeting, wiring a layout with DCC clinic, merit judging, presentation of AP certificates, "Bring & Brag/Show & Tell" session, and possibly an operating session on the layout. Info: web site, <http://eid.mcor-nmra.org/index.html>.

GATEWAY DIV. (ST. LOUIS, MO) meets 3rd Monday each month, 7PM. Odd numbered months: Trinity Lutheran Church, 14088 Clayton Rd at Woods Mill Rd (Hwy 141), Ballwin, MO; Even numbered months: VFW Hall, O'Fallon, IL <http://www.gatewaynmra.org/division.htm>.

TURKEY CREEK DIV. (KANSAS CITY, MO & KS) monthly meetings 4th Tuesday, 7PM. Johnson County Offices, NE Branch, 6000 Lamar, Shawnee Mission, KS (DMV Building on SW corner of Lamar and Martway).

WESTERN HERITAGE DIVISION (OMAHA, NE/ COUNCIL BLUFFS, IA) meets second Saturday (except June and December) at noon. Sump Memorial Library, corner of Washington and 2nd St. in Papillion (across from Runza). Visit www.whdnmra.org for more info and a map.

KATE SHELLEY DIVISION now meets the 4th Thursday at the Ames Public Library, 515 Douglas Ave., Ames, Iowa. 7-8:45PM, in the upstairs meeting rooms. All are welcome.

INDIAN NATIONS DIVISION meets at the New Hardesty Library at 8316 E. 93rd. St. (Just east of Memorial) in Tulsa, OK. 9:30-12:30pm. Various presentations from clinics, to slide shows. Member layout tour after the meetings. May 2, Sept, 19, Nov. 14. Info: Dave Salamon at drs_rr@yahoo.com.

PLATTE VALLEY DIV. (HASTINGS, GRAND ISLAND, KEARNEY, NE) meets 2nd Tuesday of each month at 7PM. in members homes on a rotating basis. Info: John O'Neill, MMR, Div. Dir., 308-384-5011 or jponeill@computer-concepts.com.

WESTERN KANSAS DIVISION (GARDEN CITY, KS) Meets every Monday evening from 7-9PM. at 4091/2 N. Main St. (second floor above "Stage" department store) 7 layouts on display (2-HO, 5-N) Operating sessions available Info: Robert Simmons, Division Director (620) 521-3591 or ras@odsgc.net.

TRAIN SHOWS & MEETS

MAR 28—JOPLIN MUSEUM COMPLEX MODEL RR SHOW & SWAP MEET, 7th & Schifferdecker Streets in Schifferdecker Park between the golf course and swimming pool; 9-3; operating layouts, over 60 vendor tables, Adm: \$3 adults, 12 & under free with paid adult; proceeds to Joplin Museum Complex; Info: Rick Gardner: rickgardner#sofnet.com; (417) 673-4888 or www.tristatemodel-railroaders.com.

APRIL 18—OMRA ANNUAL SPRING TRAIN SHOW & SWAP MEET - King's Way United Methodist Church, 2401 S Lone Pine, Springfield, MO. 9-3. Adm: Adults \$5, Children 12 & under free. For vendor info: Gary Mills, 417-725-1433. Other info: Dale Irvine bowlanmrr@mchsi.com or Ted Beresky tiberesky@hotmail.com 417-459-6042.



Steve Smedley Photograph

ABOVE: Blue Island, Illinois played host to a myriad of Rock Island freight cars representing various eras. The last year that The Rock showed a profit was 1964 the starving railroad endured to 1980 when this image was captured.

APR 18—GREATER TULSA AREA TRAIN SHOW, Bixby Community Center, 211 Cabaniss, Bixby, OK; 9-3, \$3 adult; kids under 12 free; operating layouts, door prizes; buy-sell-trade all scales; go east on 151st St. past Memorial, to Cabaniss, then south to Comm. Ctr. Info: 918-440-1910 or 405-624-7651; Sponsored by TTOS, Sooner Division.

APR 18-19—15TH ANNUAL TRAIN SHOW, NEBRASKA WEST-CENTRAL DIVISION OF THE NMRA: D&N Event Center, 501 East Walker Road, North Platte, Nebraska, Sat: 9-5, Sun: 10-4, Admission \$3 for adults, Children under 12 \$1, Children under 5 free with paid adult. Vendor tables \$10 each till April 1st, After April 1st \$15. Union Pacific tours will be available as an extra fare item on Saturday the 18th only. For additional information contact: Gene Tacey P.O. Box 485, Sutherland, NE 69165, 308-386-2489, taceys@gpcom.net

APR 25-26, 2009--THE WESTERN HERITAGE DIVISION ANNUAL SHOW at Omaha Burke High School, 12200 Burke Blvd. (SW corner of 120th & West Dodge Rd), Omaha, NE; Sat: 9-5, Sun: 10-5, Admission \$5 per adult, children under 12 free. Bring a non-perishable food item for donation to local food banks and get \$1 off admission. Info: John Griffith, (402) 691-8941. web: whdnmra.org.

PAINTING BRASS

LARRY TIFFANY



Like most modelers, I began building and painting model cars when I was a young boy. These were usually brush-painted with a little spray painting mixed in toward the end of my car-building stint. I resumed my interest in model trains after I met my wife in 1972. In 1975, we rented a house with a basement, and I built a small layout. Oddly enough, I could not find the models that I wanted in Union Pacific paint, so I started painting the models with plastic model paint. I experimented with different paints and methods of application. Model railroad friends began to take notice, and I soon began painting their models as well. After the purchase of our first home, I built a much larger layout. Soon thereafter, I discovered paint manufactured specifically for model railroading. I could achieve more realistic paint jobs, and my experience with custom painting grew over the next few years. In 1979, I purchased my first brass custom-painted locomotive. Unfortunately, I was less than happy with the quality of the paintwork. To make it right, I made several changes to the model's paint job, which I showed the owner of Train Service Junction. He sent me a model to paint for him, and that was the beginning of my commercial painting for model railroad stores.

I have custom-painted models for Pro Paint Plus, Bob's Engine House, and Canadian Model Trains. My painted models have literally been all over the world. Currently, I am painting Tom Marsh's (founder of Overland Models) personal collection. This painting, along with painting my own models, keeps me quite busy.



My paint of choice is Scalecoat because it dries to a glossy finish that allows decals to adhere quite well. The first steps of the process include disassembling the model, mak-

ing any necessary repairs, and a thorough cleaning to prepare the surface for painting. Repairs range from fixing bent parts to resoldering entire portions of a locomotive.



The model is then painted with a primer and oven baked for two hours. Next, light colors are applied, followed by darker colors. Details are painted last. The model is baked for two hours between each color. After painting the details, the model is baked for about an hour. An average, a Union Pacific brass diesel locomotive is baked in the oven for approximately seven hours before it is ready to decal. After decaling, the model receives a clear overcoat of automotive clear paint to protect the paint and then it is reassembled. Over the past 25 years, I have probably painted somewhere in the neighborhood of 500-plus models. 🚂



Both pages show recent examples of Larry's brass paint jobs. Larry performs extensive research prior to each paint job, ensuring he gets it right the first time.



BRANSON EXPRESS 2008 HIGHLIGHTS

PHOTOS BY LOUIS SEIBEL

MID-CONTINENT REGION

2008 CONTEST REPORT

The 2008 Mid-Continent Region Contest was held as part of the Region Convention in Branson, MO this year. It was one of the largest contests we have seen in the last few years. There were models in most of the categories, along with modules, photos, and passes this year. There were a total of 81 entries, with 25 merit awards presented. There were several unique models, along with some very well done scratch built models. Best of Show was awarded to not only a unique model, but a scratch built one as well. Marty Vaughn took this award home for his WWII German Gun built in N scale.



ABOVE: Bonnie Dimatteo participates in the Make N' Take clinic presented by Fran and Miles Hale. Fran and Miles have another Make N' Take clinic planned for this year's convention in Wichita, Kansas. Space is limited, so sign up now!

2008 CONTEST WINNERS

BLACK & WHITE PROTOTYPE

| | | |
|--------------|-------------------|------------|
| First Place | Rounding the Bend | Joe Ludley |
| Second Place | Choose Your Track | Joe Ludley |

COLOR MODEL

| | | |
|--------------|--|--------------|
| First Place | ATSF Container Train on Gary Hankins' Model Railroad | Paul Myers |
| Second Place | Switching the Green Valley Coop | Dave Salamon |
| Third Place | Coyote Gold Tram #3 passing the Palisades Water Tank | Ron Morse |

COLOR PROTOTYPE

| | | |
|--------------|---|--------------|
| First Place | Trolley at the Western Railway Museum | Dave Salamon |
| Second Place | Surfliner #769 at Santa Susanna Railroad Depot Museum | Paul Myers |
| Third Place | MOW Kansas City, MO | Louis Seibel |

PASS CONTEST

| | | |
|--------------|--|-------------|
| First Place | Silverton, Gladstone, & Northerly Railroad Travel Pass | Dave Roeder |
| Second Place | Silverton, Gladstone, & Northerly Railroad Ticket | Dave Roeder |

MODULE CONTEST

| | | |
|-------------------|--------------|-----------------|
| First Place | Summer Scene | Bonnie Dimatteo |
| Second Place | Fall Scene | Tim Townsend |
| Third Place | Winter Scene | Karen McMorran |
| Honorable Mention | Spring Scene | Jim Dimatteo |

STEAM

| | | |
|--------------|--|-------------------|
| First Place | DRGW #360 C-21 | Stephen Roosevelt |
| Second Place | UP #437 2-8-0 | Roger Percival |
| Third Place | Silverton, Gladston, & Northerly #34 "Gold Prince" | Dave Roeder |

DIESEL

| | | |
|--------------|--------------------|-------------|
| First Place | CNW GP7 #4101 | Al Warren |
| Second Place | CNW SD40 #923 | Al Warren |
| Third Place | Alco S-1 WG&F #781 | Dave Roeder |



FREIGHT CARS

| | | |
|--------------|--------------------------------|----------------------|
| First Place | MKT #13144 w/ Steel Plate Load | Robert J. Wintle JR. |
| Second Place | UP #472390 Stock Car | Roger Percival |
| Third Place | UP #39190 Stock Car | Roger Percival |

NON REVENUE

| | | |
|--------------|--|----------------|
| First Place | "Bruno" WWII German 28 cm Rail Gun | Marty Vaughn |
| Second Place | "Gneisenau" WWII German Naval Rail Gun | Marty Vaughn |
| Third Place | UP #905002 Tool Car | Roger Percival |

CABOOSE

| | | |
|--------------|-------------|-------------------|
| First Place | BN #10907 | Dave Roeder |
| Second Place | BN #10991 | Dave Roeder |
| Third Place | DRGW #04990 | Stephen Roosevelt |

ON-LINE STRUCTURES

| | | |
|--------------|--|--------------|
| First Place | San Juan Mining & Petroleum Co. Water Tank | Larry Alfred |
| Second Place | Coaling Tower | Jerry Frey |
| Third Place | Handcar Shed | Paul Myers |

OFF-LINE STRUCTURES

| | | |
|-------------------|-----------------------------|-----------------|
| First Place | Fairview Community Church | Brad Slone |
| Second Place | Paint Barn | Frenchie Grafts |
| Third Place | Hay Barn | Brad Slone |
| Honorable Mention | Barn | Larry Diehl |
| Honorable Mention | WKLO Radio Station | Larry Diehl |
| Honorable Mention | Genco Olive Oil Distributor | Larry Diehl |
| Honorable Mention | The Tower | Larry Diehl |
| Honorable Mention | The Store | Larry Diehl |

ON-LINE DISPLAYS

| | | |
|--------------|--|-----------------|
| First Place | Lumber Yard Scene | Frenchie Grafts |
| Second Place | San Jaun Mining & Petroleum Co. Oil Facility | Larry Alfred |
| Third Place | Rolla Depot | Brad Slone |

OFF-LINE DISPLAYS

| | | |
|--------------|--|-------------|
| First Place | Radio Station and Olive Oil Distributors | Larry Diehl |
| Second Place | A Farm Display | Larry Diehl |
| Third Place | City Scene | Larry Diehl |

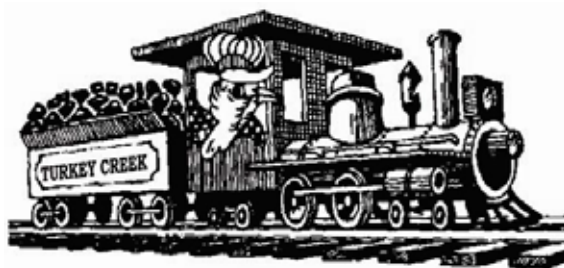
BEST OF SHOW

| | |
|------------------------------------|--------------|
| "Bruno" WWII German 28 cm Rail Gun | Marty Vaughn |
|------------------------------------|--------------|

NARROW GAUGE LIGHT IRON AWARD

| | |
|--|--------------|
| San Juan Mining & Petroleum Co. Water Tank | Larry Alfred |
|--|--------------|





**Turkey Creek Show
August 1, 2009
Lenexa Community Center
13420 Oak, Lenexa, KS (Pflumm & Santa Fe Drive)**

Activities planned for this year's meet include:

- **Clinics** – a full slate of clinics covering many aspects of the hobby.
- **Model & Photo Contests** – by NMRA judging and Poplar vote. Each model (up to a maximum of 5 models) you enter in the model contest will automatically qualify you to be entered in to a special drawing to receive a \$50.00 gift voucher.
Special Youth Award for the best overall youth model entry.
- **Door Prizes** – Additional door prizes will be set aside for advance registrants.
- **Display Layout and Layout Tours** – In addition to the display layout at the meet, several local modelers will be opening their homes to layout tours in the afternoon and evening. Layout tour maps will be available for collection with your registration.
- **Swap Tables and Railroad Groups** – Expect to find more than 70 tables from area dealers, local hobbyists and other railroad groups. For information on tables contact Robert Jefferis at jeffbobj@everestkc.net.
- **Food and Refreshments** – Scout Troop 92 will have food and refreshments available during the show.

Turkey Creek 2009 Division Meet Registration Form

Advance Registration: \$4.00 ♦♦♦♦ Full Registration: \$6.00 (\$5.00 NMRA member) at door
Children under 12 free with paid registration

| | | Advance Registration (\$4.00) | No. Registration | Total Cost |
|---|--|-------------------------------|------------------|------------|
| Name: | | | | |
| Address: | | | | |
| City | | | | |
| State Zip | | | | |
| Telephone #: | | | | |
| E-Mail Address: | | Total Enclosed: | | |
| More Registrant Names: | | Scale Modeled | | |
| <p>Make Checks Payable to: "Turkey Creek Division"</p> <p>Mail to: Turkey Creek Show, C/o Sheldon Levy, 9054 Muller, Lenexa, KS, 66215-5409</p> | | | | |

My Photographic lists

I have spent three years scanning 80,000 negatives and putting them in digital TIFF format.

I will not E-mail any of the files because they are large 13 MB for a B&W and 35 MB for a color negative. Since Kodak no longer makes the paper I like to use, or the film I like to use, I no longer will make darkroom prints. I only make computer 8 x 10 prints of all negatives for \$5.00 each. If you prefer, I will cut you a CD of negatives the cost is a minimum of \$10.00; \$1.00 per photo on a CD-ROM. The lists that I have available contain B&W and Color negatives for the FRISCO, KATY, MP, and ROCK ISLAND Railroads. I also have a general railroad photographic list available for all other railroads. I have four lists for each of the four railroads listed above; depots, rolling stock, diesels, and steam locomotives. The depot list contains interlocking towers and freight houses. The rolling stock contains freight and passenger equipment, roundhouses, turntables, coaling towers, bridges, and tunnels and miscellaneous photos. I have given credit to the photographer if they are known to me as well as date and location for all negatives if known. I have adjusted the brightness and contrast and color for all negatives, any further optimizations are left up to you, I used Photoshop CS3.

If you have any black and white or color pictures that are not on my list, I am open to trading with you. One print off of my list 8 x 10 size for each print you send me. That is: you send me an 8 x 10; I send you an 8 x 10.

Please order all prints by giving me the negative # for the print and a description of the print you are ordering. Most single prints have a number like 318-23. That indicates that there is only one picture available. If you see something like 318-23/27 or 318-23-29, then that indicates there is more than one negative in that group, usually a different viewing angle, etc. Since Excel thinks a negative number like 2037-3-6 is a date, I have had to enter these negative numbers in a different way; I have used 2037-3 to 6, 2047-

12; 16 to mean the same thing as 2037-3-6 and 2047-12/16. If there is a series with more than one negative number and both B&W and Color columns have a yes in them that means one of the pictures is in B&W and another one is in color. Send me payment for as many prints in the series as you want, and I will select the views and print them for you. If you see a listing with CD-ROM 55 for example and the listing right below it has the same information except for a negative number in the first column; then the CD-ROM 55 is the same photo that has been scanned and stored on that CD, so please use the **negative number** not the **CD number**. I have made every effort to be sure my lists are accurate; but with 80,000 negatives, I am sure there are mistakes, so I will work with you to get you the correct photograph you have ordered. Thank you.

I can E-mail you any of my lists for free. They are in Office 2007 Excel format, so you will need the Microsoft conversion file to open them if you are not using Office 2007. I have converted all Excel files to PDF format for your assistance; I can send you the files in PDF. All prints and/or CD's are sent to you postage paid.

All photos are sold to you for your personal use only. You cannot electronically transfer the photos, or give them to anyone else without my written permission. All photos in black in the lists are for sale to you, all other photos in color in the listings are for reference only, I cannot sell them to you.

Number explanation: If you see a number such as 487-19, the first number is the negative roll number, and the second number is the actual negative. If you see 342-10-15, then there are six negatives in that series; but if you see 261-5/9, then there are only two negatives in that series.

Richard E. Napper
7244 NW US HWY 24
Topeka, KS 66618-5605
785-582-4209 Fax 785-582-5268
E-mail renapper@wildblue.net

ADVERTISING RATES

MCoR invites you to consider the *Caboose Kibitzer* for your advertising needs. This magazine serves over 900 National Model Railroad Association members within a seven-state area: Iowa, Nebraska, Kansas, Missouri, Illinois, Arkansas, and Oklahoma.

Single issue Commercial ad rate is 35% of the yearly rate. Want ads are free to current MCoR members. They are subject to available space and acceptance at the discretion of the Editor, and are limited to 25 words or less.

Ads need not be identical throughout the year. Prices listed above are for camera ready copy. Design and typesetting services are available on request, at extra cost.

All inquiries and payments should be sent to the Advertising Manager: Louis Seibel, 1069 N Logan, Olathe, KS 66061. Make checks payable to the Mid-Continent Region.

| Ad description | Approx. size | Cost per year |
|----------------|--------------|---------------|
|----------------|--------------|---------------|

COMMERCIAL ADS:

| | | |
|---------------|---------------|----------|
| Full page | 9.5" x 7.25" | \$120.00 |
| Half page | 4.75" x 7.25" | 70.00 |
| Quarter page | 4.75" x 3.5" | 38.00 |
| Eighth page | 2.5" x 3.5" | 22.00 |
| Business card | 2" x 3.5" | 15.00 |

DEALER DIRECTORY:

| | | |
|---------------|-----------------|-------|
| Business card | 1.375" x 2.375" | 10.00 |
|---------------|-----------------|-------|

PIKE REGISTRY:

| | | |
|---------------|-----------------|------|
| Business card | 1.375" x 2.375" | 5.00 |
|---------------|-----------------|------|

WICHITA NORTHERN EXTRA 2009 (JUNE 11-14)

HOSTED BY THE CHISHOLM TRAIL DIVISION

Wichita's Chisholm Trail Division will be hosting the MCoR 2009 Regional Convention starting on Thursday night, June 11 for four days of great model rail-roading experiences.

Wichita may be one of the best kept secrets in the Mid Continent Region. Wichita can easily stand with any city of comparable size in the quality and number of attractions and entertainment options it has to offer.

THINGS TO DO IN WICHITA

(1) Exploration Place where people of all ages can discover extraordinary hands-on experiences. www.exploration.org



ABOVE: Kent Nichols 12'x12' O Gauge layout is an over-under track plan with passing sidings and industry tracks. The layout is scenicked with tunnels mountains and bridges.

(2) Old Cowtown Museum where history comes to life! www.oldcowtown.org

(3) The Sedgwick County Zoo, rated the number one outdoor family attraction in Kansas. www.scz.org

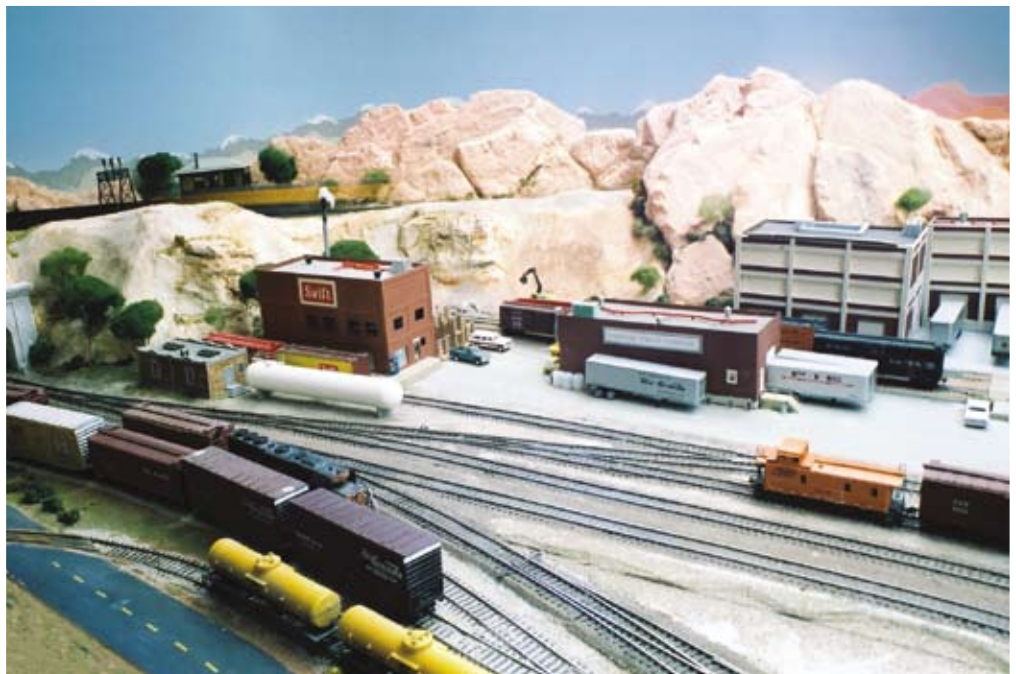
(4) Botanica, the Wichita Gardens is a paradise on the Plains featuring over nine acres of stunning gardens showcasing over 3,600 species of plants. www.botanica.org

(5) The Museum of World Treasures where

visitors can experience a trip through time in a very unique way! www.worldtreasures.org

(6) Old Town District is a concentration of brick warehouses brought back to life as the city's most popular concentration of shopping, entertainment, and dining. Just voted one of the top 10 neighborhoods in America by the American Planning Association. www.oldtownwichita.com

(7) The Great Plains Transportation Museum presents the heritage of railroading



ABOVE & LEFT: Dennis Buth will have his HO scale standard gauge D&RGW set in magnificent Rockies on display. The railroad features western scenery complete with cities and mountains. The layout is in various stages of development, with significant areas of detailed mountainous scenery. Don't miss the Climax mine, tunnel motors, long freights, and occasional passenger trains powered by both steam and diesel. The layout operates on DCC and includes sound.



TOTOTRAINS.LLC

SPECIALIZING IN EUROPEAN TRAINS
WALTHERS/MÄRKLIN/LGB DEALER

REPAIRS•SERVICE
NEW/USED•BUY/SELL

THU-SAT: 10.00AM-4.00PM

WWW.TOTOTRAINS.COM

1031 VERMONT STREET, SUITE A

LAWRENCE, KS ----785-766-0467

in the Wichita area and provides a great experience for the whole family. There is a wide assortment of motive power and rolling stock, as well as gift shops and historical information. www.gptm.us

Other shopping and dining options abound at Bradley Fair www.bradleyfair.com New Market Square www.slawsoncompanies.com/new-market-square, and The Waterfront www.thewaterfrontwichita.com

Come and enjoy a unique and fun place to visit for the entire family For more information on Wichita, log on to: www.visitwichita.com// or call 800-214-3661

CONVENTION AND TRAIN SHOW

Best Western Wichita Airport 6815 W Kellog, 316 942-5600, group #NMRA-MCoR 2009, room rate is \$79.99 + tax.

Registration opens Thursday evening, June 11. The train show will be held Saturday and Sunday, June 13-14. The awards banquet is Saturday night.

REGISTRATION

FULL REGISTRATION allows you complete access to all convention activities. The Fare

is \$30 per person. Extra-fare items are not included.

NON-NMRA MEMBER REGISTRATION allows you full access without joining the NMRA. The fare is \$40 per person. Extra-fare items are not included.

BANQUET

Fare is \$25 each for NMRA members, their spouses or guests, and \$30 per person for NON-NMRA attendees.

TRAIN SHOW

Free to convention registrants. Public fare is \$5 per day per person. Children 12 and under are free when accompanied by a paid adult.

CHECK-IN

Registration/check-in will be in lobby. The hospitality room is adjacent to the courtyard where the train show will be held. Registration and the hospitality room will be open Thursday from 4-8PM. On Friday, registration is open from 8AM-5PM. At check-in, you will receive a convention bag filled with local information from the Wichita visitor's bureaus, maps to extra-fare items, and convention ID tags. You will have the opportunity to pur-

chase patches/pins and alter your itinerary at this time.

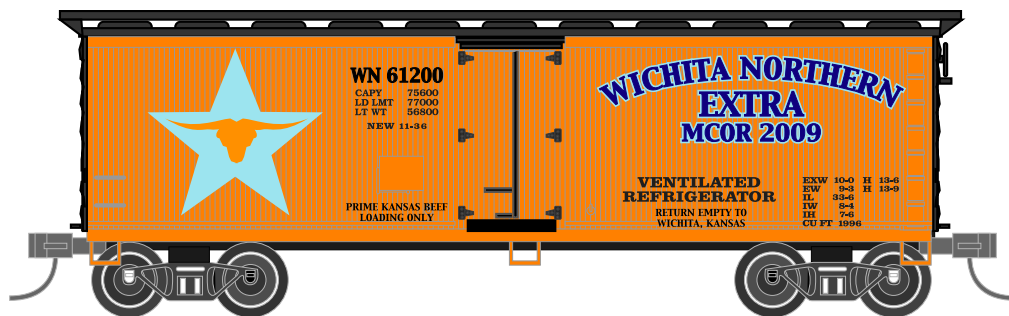
CLINICS

Friday and Saturday, June 12-13.

All clinics are open to convention registrants at no-charge except the "Make and Take" clinic conducted by Fran and Miles Hale MMR. That clinic will be limited to 26 people and the fare will be \$5. It is imperative that you sign up for this clinic when registering. If you have already registered and want to participate, contact the Convention Registrar, Richard Napper, MMR.

The convention will offer a full slate of clinics on a variety of subjects. All registrants should be able to find something of interest. Of those clinicians already signed up, more than half are Master Model Railroaders. In addition to the typical clinic sessions on Friday and Saturday, we are trying to arrange a couple of clinics on Thursday evening, for those early arrivals. Because there may be conflicts with tours or even other clinics, most clinics will be offered twice. All clinics are open to convention registrants, with the exception of the space limit on the Hales' make-and-take clinic.

| 2009 General Convention Schedule | | | | | | | | | | | | | | | | |
|----------------------------------|--|-----|---|---|----|----|----|---|---|---|---|---|---|---|---|--------|
| Thursday, June 11 | | 7am | 8 | 9 | 10 | 11 | 12 | 1 | 2 | 3 | 4 | 5 | 6 | 7 | 8 | 9 10pm |
| Registration | | | | | | | | | | | | | | | | |
| Clinics | | | | | | | | | | | | | | | | |
| Hospitality Room | | | | | | | | | | | | | | | | |
| Friday, June 12 | | | | | | | | | | | | | | | | |
| Registration | | | | | | | | | | | | | | | | |
| Clinics | | | | | | | | | | | | | | | | |
| Layout Tours | | | | | | | | | | | | | | | | |
| Contest Room | | | | | | | | | | | | | | | | |
| Silent Auction | | | | | | | | | | | | | | | | |
| Live Steam Tour | | | | | | | | | | | | | | | | |
| Train Show Setup | | | | | | | | | | | | | | | | |
| Hospitality Room | | | | | | | | | | | | | | | | |
| Saturday, June 13 | | | | | | | | | | | | | | | | |
| Restration | | | | | | | | | | | | | | | | |
| Clinics | | | | | | | | | | | | | | | | |
| Contest Room | | | | | | | | | | | | | | | | |
| Silent Auction | | | | | | | | | | | | | | | | |
| Prototype Tours (TBD) | | | | | | | | | | | | | | | | |
| BOD Meeting | | | | | | | | | | | | | | | | |
| Banquet | | | | | | | | | | | | | | | | |
| Train Show Setup | | | | | | | | | | | | | | | | |
| Train Show (Convention) | | | | | | | | | | | | | | | | |
| Train Show (Public) | | | | | | | | | | | | | | | | |
| Sunday, June 14 | | | | | | | | | | | | | | | | |
| Train Show (Public) | | | | | | | | | | | | | | | | |



CLINIC TOPICS:

- Dennis Brandt – Resin Rock Casting
- Dennis Brandt – 50 Years of Narrow Gauge Railroading
- Fran & Miles Hale, MMR – Build a Structure...a make-and-take clinic where you will be able to build your own structure, A DPM saloon. A \$5 charge will apply and a limit of 26 people. HO or N scales only. **Sign up for this clinic when you register.**
- Marty Vaughn, MMR – NMRA's Achievement Program
- Bob Wintle, Jr – Model Railroad Operation
- Bob Bayley – Spline Roadbed
- Marty Vaughn, MMR – The Short and Violent Life of Rail Guns and Armored Trains
- Stephen Priest, MMR – Model photography for Publication - presented by NMRA's *Scale Rails* Editor
- Cynthia Priest – Behind the Scenes of a Magazine - presented by MCoR's *Caboose Kibitzer* Editor
- Richard Napper, MMR – Tools that I Like to Use
- John O'Neill, MMR – Trucks (vehicles) for Your railroad

- Dave Roeder, MMR – Backdrop Building Flats

RIGHT: Manfred & Millie Hein's large G scale layout will be open for tours. This garage layout is built at a height of 43 inches for better viewing and maintenance. This is a large L-shaped layout, with six sidings, a turntable, and about 100 feet of mainline. This layout has lots of scenery and uses foam for a scenery base.

- Dave Roeder, MMR – Prototype Modeling
- Tracy Mitchell, MMR – Tools of the Trade
- John Shaw – Air Brush Applications for Model Railroading
- Paul Richardson, MMR – to be determined
- Brad Morneau – to be determined

MODEL AND PHOTO CONTEST

Have all documents filled out in advance. Forms are available from your local AP chairman or on the NMRA website. Entries will be accepted starting at 9AM Friday and the NMRA judging will take place at 2PM on Saturday.

DOOR PRIZES

Two special prizes will be raffled off to convention registrants Saturday night at the awards banquet. Regular door prizes will be raffled off during the train show on Saturday and Sunday.

EXTRA-FARE ITEMS

Live Steam on 7½ and 12" gauge of the Midway USA live-Steamers and will be extra fare. The Convention will provide the transportation. The bus will be limited to 20 people per bus load. The ride will run from 2-8PM on Friday. They run on about two acres. Available to all registrants: full, non-members, spouses, and guests at special convention rates.

Tour of the Union Pacific car shop in Wichita. The tour will be on Saturday, June 13. It will be an extra fair and we will bus people out and back. Check with the convention registrar or the website for more information on costs and times.

Awards banquet Saturday 6-10PM. Cost is \$25 per person for NMRA members, their spouses or guests. \$30 per person for NON-NMRA members, their spouses or guests.

HOME LAYOUT TOUR

Friday the tour is self guided. Maps will be provided in your convention bag.

PUBLIC TRAIN SHOW

Saturday and Sunday. Vendor tables \$15 each.

Convention attendees are free. Public admission is \$5 per person per day. Children 12 and under are free with a paid adult.

BOARD OF DIRECTORS MEETING

Saturday, June 13, 3-5 pm



MARION KANSAS DEPOT

STEPHEN PRIEST



The Santa Fe Railway had a unique knack for placing a special depot at the county seat served by the railroad. These beautiful structures were usually red brick with tile roofs and white trim while “non-county seat” depots were “standard” wooden construction. County seats were important commerce and governmental centers in rural agricultural Plains states. During the westward expansion, most counties were originally surveyed and laid out in such a way that the distance from the county seat to the county border and return could be travelled by horseback in one day. These towns were also the political seat, boasting a courthouse, civil offices, and the county jail. Santa Fe, assuming these towns would have larger populations travelling by rail, ponied up the extra cash needed to construct the larger, more extravagant county seat depots.

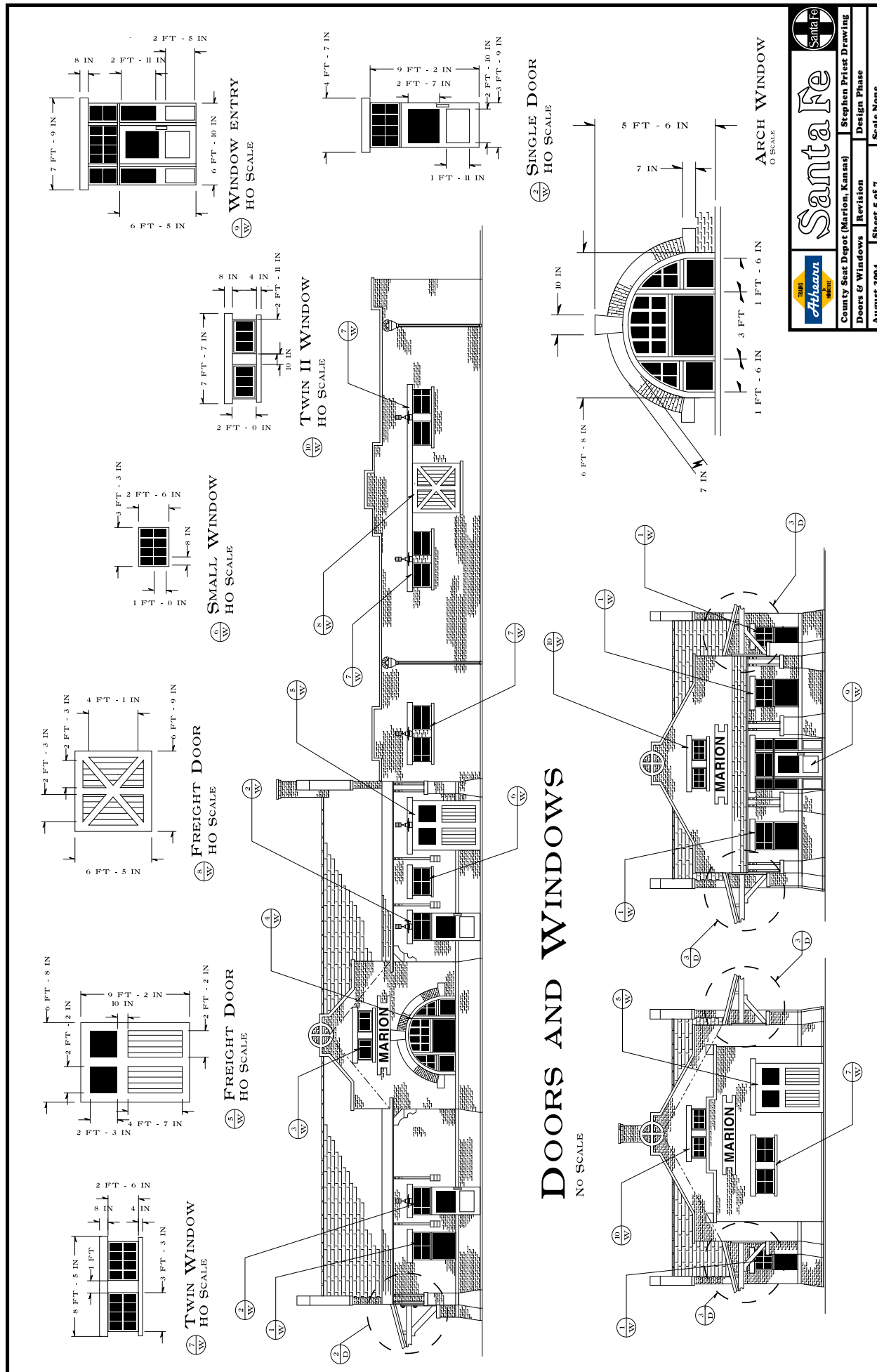
While the ATSF created several variations of the county seat depot, many had very similar appearances. There are also examples of county seat depots that were built in cities near county seat towns. An example of this would be Strong City, Kansas, which boasts a beautiful county seat depot. The county seat, however, is actually Cottonwood Falls, a town that lies just a mile south of Strong City, but I imagine in the railroad’s eyes Strong City was close enough. Just the opposite is also true, there are county seat towns that had/



ABOVE: The detailing involved in the construction of these depots is nothing short of amazing. The tile detail, brickwork, and Santa Fe logo are all nicely reproduced. Notice, too, the outward tilted lower portion of the walls, the limestone brick caps, beltrails, and wall caps.

have Santa Fe service, yet no county seat depot.


When I began discussing possible structure projects with Athearn, I immediately thought of these unique and difficult-to-model structures. I had built one from scratch in styrene and vowed never to do that again, especially if I could gently coax a manufacturer to do the job from my drawings. Athearn gave me the green light,



and I proceeded to create a set of drawings of the Marion, Kansas, depot. My decision to use the Marion depot as the core for the structure was based on several things: First, the prototype structure had just emerged from a rebuild (it is now the Marion City Library), creating a pristine structure to photograph, measure, and use as the foundation for my design work. Second, my parents live in the Marion area, and I had spent many hours riding my bike around the structure as a child. The building is special to me. Finally, the structure was very similar in styling to many other county seat depots, allowing the modeler the option to purchase several of the buildings and make a strong prototypical case for using multiples on their railroad. That final point was important for both Athearn and me.

I find it interesting that the model is made from cold cast resin and three pounds of it to boot! The depot is cast in two main sections: the passenger depot and the freight-house portion. The roof is cast in place on both sections, with the five roof overhangs on the depot

LEFT: The drawing on the left is one of seven sheets created for Athearn. The plans were carefully drawn from measurements taken by my father and me of the original depot, which still stands at Marion, Kansas. This is one of over a dozen structures that I designed for Athearn. Sadly, Athearn has decided to exit the structure business.



Santa Fe

County Seat Depot (Marion, Kansas)

Doors & Windows

Revision

August 2004

Design Phase

Sheet 5 of 7

Scale None



ABOVE: The reproduction of the main window is astounding. Each window pane, curved brickwork, and keystone are sharp and crisp in detail. Notice the mortar embedded between the bricks.

portion cast in separate pieces that were then glued to the main structure. Athearn's decision to tool the molds in this manner allowed the structure's heavy timber framing detail to be cast into the underside of the overhangs. An awesome addition to the structure's design, but one that is really only visible if the depot is viewed from below. After attempting to cast the fine window mullions, fenestration, and door details in resin, Athearn finally decided to tool these pieces and provide them as injection moldings. I think this was a wise decision, and the final result of this extra effort is clearly visible in the finite detail the injections provide. Other injection styrene details include the heavy timber 45 degree supports for the door overhangs, downspouts, and external lighting brackets. Each of these parts were manufactured to my drawings and look superb. Window glazing is provided, and the entire structure is painted and lightly weathered. The brickwork has been given a light white-wash, creating the impression of mortar between the bricks. This, combined with the hand-painted cement/limestone accents, wall caps, sill, and keystones, created a visually stunning structure. Also designed into the castings are letter-board areas that can be used to specify the location of your depot. Several town names are provided on a decal sheet including Marion, Fowler, Halstead, Harper, Kingman, Mulvane, Norman, Plainview, and Stafford. Many of these depots are similar or identical in design to Marion.

The roof on the depot is particularly well done and includes the tile and associated tile detail. The cap tile, or peak tiles, have great relief and are spot-on to the prototype. One of the interesting architectural details found on these depots that makes them a challenge to model is their angled lower wall sections. A keen eye will instantly see the concrete/limestone belt rail that wraps around the depot portion of the structure.



ABOVE: The southern face of the structure had the operator's window-office. Originally, a train order signal was controlled from this office, allowing the operator to stop a passing train for cargo, mail, or passengers. Robert L. Priest, photo

The brick wall from that point downward actually tilts outward at the base, widening the overall footprint of the structure slightly. Reportably, this architectural detail was functional as well as visual. Its purpose was to keep baggage carts and the like from scarring the walls of the structure. The premise was that the wheels would bump against the heavy foundation before the cart would come in contact with the structure. The belt-rail is about three feet high, and the angled overhang is about six inches wider at the base.

The structure is designed to be planted into your scenery. This places the foundation below the scenery line. Because of this, you will have to add step stoops to each of the door entrance areas. These can easily be made from pieces of scrap styrene. Many county-seat depots had a raised dock at some point, which allowed external loading of flatcars or trucks. These were usually located on the freight-house end of the building and were constructed of treated wood.

The model of the depot is very strong and, as mentioned earlier, heavy. The resin used picked up the detail very well, but there are a couple of things I would like to mention in passing. The first is the lack of

detail on the freight-house end pertaining to the downspouts. There are no openings to the roof. This is because the roof should be sunk at least two feet below its current flush position to the height of the tops of the downspouts. Ironically, this is most likely my fault because I did not reference the roof height on my drawings (I just checked and hung my head in shame). The roof also should be a tar with an aggregate used on the surface. This is very easy to fix, and with a little effort will quickly make the depot look markedly better when viewed from above. Simply use a sheet of sandpaper cut to the internal size of the walls. This is then glued to the roof and presto, instant tar and gravel roof. Using a darker color sandpaper will also give the impression that the flat roof is sunk down below the walls as it is on the prototype.

All things considered, the depot is a fantastic model of a complex, but common structure. Although it is a specific prototype, the numerical presence of these structures makes them common. The fully assembled structure may seem expensive, but having built one from scratch, it is actually a bargain. The materials alone to scratchbuild one will run close to \$100, and that does not take into consideration your time and effort. 🚂

PIKE REGISTRY



Omaha Sub
Route of the Eagles
email: mopac12@gmail.com
26550 227th Street
Mc Louth, Kansas 66054 913-727-6649



EDWARD H. HARRIMAN



JAMES J. HILL

HARRIMAN-HILL SYSTEM
OLIVER DEE JOSEPH, CEO 618-397-0823



(417) 883-5350
RJWILLIAMS1@MCHSI.COM

RON WILLIAMS, MMR
PRESIDENT

ST. LOUIS - SAN FRANCISCO RAILWAY COMPANY
3129 S. CHAMBERY AVE SPRINGFIELD, MO 65804

C&RM RR

Canyon & Rocky Mountain RR

President

Randolph P. Meyer
156 Ladue Oaks Dr.
Creve Coeur, MO 63141



Barry M. Quensel
President

The Alton Route

480 SE Lasso Loop
Lawton, OK 73501

Phone: (580) 351-2037
e-mail: QuBert1@aol.com

Missouri Pacific Lines

White River Division

DAVID BOGARD
District Superintendent

Maumelle, Arkansas
Phone 1-(501)-851-6278
MoPac55@hotmail.com



PR & SR RR

Pleasant Ridge and Shelter Rock Railroad



Thomas B. Dole
President and Owner

1796 Commodore Walk
Worden, Illinois 62097
(Holiday Shores)

HO Scale
(618) 659-0684
tbd1945@aol.com



SHELTER BAY RAILWAY
CORPORATE HEADQUARTERS
9331 FARLEY LANE
OVERLAND PARK, KANSAS
66212

(913) 888-4080

G. PATRICK HARRIMAN, MMR
PRESIDENT
CHIEF OPERATING OFFICER

NEBRASKA & SOUTHERN RAILROAD



"Links The Gulf Coast"

"The Way South"

GENE R. TACEY
SUPERINTENDENT

P.O. BOX 485 SUTHERLAND, NE 69165
308-386-2489 taceys@gpcom.net

UNION PACIFIC RAILROAD



CHARLIE STAPLETON
General Superintendent
Kansas Division

1411 N. 79th St.
Kansas City, KS 66112

HO Scale
913-299-2923



Levee Lake Railway & Navigation Co.

Sn3

Peter B. Smith
Receiver

4317 Mahogany Lane, Belleville, IL 62226
Tel. 618 277 5518 E-Mail: psmith@apci.net

PHONE: 913-649-3530

Division of C.R.H.
Equipment Co.

CHARLES R. HEYING
PRESIDENT



10209 BROADMOOR
OVERLAND PARK, KS 66212

Delaware & Hudson Model Railroad
Susquehanna Division



John A. Shaw
Superintendent
225 Wasatch CT NE
Cedar Rapids, IA 52402
(319) 265-8122



MR. DENNIS O. SMITH

DEERBROOK & SALTEN RAILWAY CO.
THE IRON ROAD

665 SOUTH YORK COURT
Springfield, MO 65802

WINTER QUARTER OFS

P.T. BARNUM & D. SMITH RAILROAD CIRCUS



THE BRIDGE LINE

HO SCALE CLUB
660 NW WAUKOMIS
KANSAS CITY, MO 64151
PH: (816) 436-5156

MEMBERSHIPS OPEN

CLUB MEETS WEDNESDAY 7PM
CONTACT: LENNY OHNNEL (PRESIDENT)



PIPER VALLEY RAILROAD

CO-OP HEADQUARTERS
912 RIDGE DRIVE
BELTON, MO 64012

(816) 331-2773

JOE B. ROBERTSON, MMR
PRESIDENT & CEO



PASS
No. _____



TO:
WEAVERVILLE
WHISKEY CREEK &
WESTERN RR
WAY OF THE
WOBBLE
WOBLE
BUG

LIFE 3311
WESTSIDE
SHORT LINE
LOGGING
CO. INC.
SERVING
ALL
LOGGING
ROADS

SHOP FOREMAN • BILL WEAVER • PHONE 479-253-9325
7 A CLOVER LANE, HOLIDAY ISLAND, AR. 72631



"ROUTE OF THE COUGARS"

Ron Morse, MMR

8324 Hall Dr.
Lenexa, KS 66219
(913) 894-6472

rdmorse1@juno.com

MCoR



NMRA

Clear Creek & Quicksilver "The Mountain Goat"

Allen Pollock
General Manager

P.O. Box 243
Jefferson City, MO 65102



WESTERN PACIFIC

Industrial Switching
In Northern California

Steve Newland
Yardmaster

303 W. 1st Ave.
Garnett, KS 66032
(785)448-1627

Missouri Pacific Lines



Robert Joseph Amsler, Jr.
5630 Arenas Drive
St. Louis, MO 63116

St. Jacques Northern Division of Great Northern Pacific Railway

John Hardy

Division CEO *The Big River Line*

2528 Wild Valley Drive Telephone
High Ridge, MO 63049 314-677-8270

RI MASON ROAD SPURS a division of the ROCK ISLAND LINE

Gene Coffman 541 N. Mason Rd.
314-469-4882 St. Louis, MO 63141



PSEUDO-SOO LINE

"The Swamp Level Route"

Home of the Swamp Gas
Gang

Bob Johnson—Head Gasser
St. Peters, MO 63303 (636) 922-2507
bjohnson2000@earthlink.net

PENNSYLVANIA RR



Kansas City Div.

Jim Flynn Supt.

(816) 331-6539



Stephen M. Priest Superintendant
Cynthia A. Priest CFO

PURGATORY & DEVIL RIVER RAILROAD

SERVICE TO THE HIGH COUNTRY

MOUNTAIN RAILROADING IN HON3

<http://www.purgatoryanddevilriver.com>

PAUL RICHARDSON, MMR - PURGATORY DIVISION
DUANE RICHARDSON, MMR - EL LOBO DIVISION

Mark Juett

Cincinnati Division Superintendent



Louisville & Nashville Railroad Company

1910 NE Lake Dr., Smithville, MO 64089

Telephone (816) 866-4422

Radio Phone (816) 536-9421

Facsimile (816) 866-4422

Email jjjuett@kc.rr.com



Kansas City Northern

6060 NW Waukomis Drive
Kansas City, MO 64151
Features three vintage 16" gauge
passenger carrying trains.

Open weekends

May to September



ODDBALLS DECALS

Decals for Model Railroads in N, HO, S & O scale
Web site www.oddballsdecals.org
email: mopac12@gmail.com

26550 227th Street

Mc Louth, Kansas 66054

913-727-6649

DEALER DIRECTORY

Digital Command Central, Inc.

Custom DCC Decoder & System Installations

RAY UHLICH
6416 W. 100th Street - Overland Park, KS 66212
(913) 322-4223
www.dcc-by-dcc.com dcc_by_dcc@yahoo.com

Services Available:

- Custom DCC Motion & Sound Decoder Installation
- CTC *80 Mobile Receivers Installation
- Mechanical Repair (most major brands)
- Cleaning & Lubrication

Miles Hale Provost

Model Railroading University

5608 North Mercier Drive
Kansas City, MO 64118
Ph. 816-746-1567

www.modelrailroadinguniversity.com

Fun & Games

"the people people"

www.scalefigures.com

P. O. Box 243
1040 Myrtle Ave.
Jefferson City, MO 65102
Telephone: 573-635-6163
FAX: 573-635-9680
allen@scalefigures.com

Allen Pollock
owner

DEALER FOR

North Coast Engineering DCC
Soundtraxx Decoders

DCC Specialties - Auto Reverser & Cir. Breaker & Hare
NorthWest Short Line Parts & Tools
Circuitron & Tortoise Switch Machines

20% Disc

20% Disc

20% Disc

15% Disc

20% Disc

Decoder Installations, DCC wiring & consulting

Bill Weaver
7A Clover Ln.
Holiday Island, AR 72631
479 253-9325 whipwill@cox.net

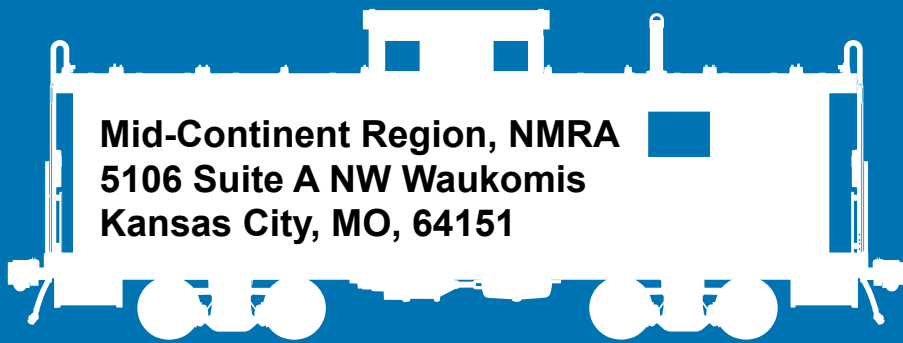
Branline Sales



www.e-model-railroading.com

Dennis Brandt

1004 South 3rd Street
Norfolk, NE 68701
402-992-2415
Branline2000@yahoo.com



Mid-Continent Region, NMRA
5106 Suite A NW Waukomis
Kansas City, MO, 64151

Non-Profit Org.
U.S. POSTAGE
PAID
Bellevue, NE
Permit No. 119

TIME-DATED MATERIAL
PLEASE DO NOT DELAY