



Trails, Rails, & Tales

The Official Newsletter of the Chisholm Trail Division of the **NMRA** & Wichita Area Model Railroaders

Volume 1 • Number 2

November - December, 2014

Schedule of Events

Be sure to mark your calendar

November

Nov 1 & 2 Mid-Continent Prototype Modelers
Railroad Prototype Model Meet
Benton Lions' Community Center
150 South Main Street
Benton, KS ----- Saturday - 9am-5pm
----- Sunday - 10am - 4pm

Nov 4 **Evening** Meeting at the Olivet Baptist Church
3440 West 13th St N, Wichita, KS 67203-4560
(13th Street North & High Street)
NMRA • meeting ----- 7:00pm - 9:00pm
Begin gathering ----- 6:45pm
NMRA Explanation of various officers duties

Nov 18 WAMRR • **Luncheon** Meeting ----- 11:30am
at Golden Coral • 11006 East Kellogg Drive
Wichita, KS 67207-1922
NMRA Nominations for various officer positions
will be closed at Midnight

December

Dec 2 **Evening** Meeting at the Olivet Baptist Church
3440 West 13th St N, Wichita, KS 67203-4560
(13th Street North & High Street)
NMRA • meeting ----- 6:30pm - 9:00pm
Begin gathering ----- 6:45pm
NMRA Election of officers will occur

Dec 16 WAMRR • **Luncheon** Meeting ----- 11:30am
at Golden Coral • 11006 East Kellogg Drive
Wichita, KS 67207-1922

January, 2015

Jan 1 "Happy New Year"

Jan 6 **Evening** Meeting at the Olivet Baptist Church
3440 West 13th St N, Wichita, KS 67203-4560
(13th Street North & High Street)
NMRA • meeting ----- 7:00pm - 9:00pm
Begin gathering ----- 6:45pm

Jan 20 WAMRR • **Luncheon** Meeting ----- 11:30am
at Golden Coral • 11006 East Kellogg Drive
Wichita, KS 67207-1922

Wichita Train Show...Coming VERY soon...

HOLIDAY SEASONS



Make Plans to Attend

The Chisholm Trail's Family Holiday Party on Tuesday, December 2nd at 6:30pm

This event for our model railroaders and their families
is scheduled to begin a little earlier on
December 2nd at 6:30 pm,
because we'll have an awesome full-evening planned!

Lots of holiday food and fellowship!

A "White Elephant" gift exchange
for the railroaders!

A video presentation

Holiday Trains around America
and
Chisholm Trail's Year in Review





Election of Officers for 2015

After terrific discussions at our October Luncheon meeting;
followed by NUMEROUS eMails; followed by much research,
we are NOW able to move further toward elections...

- **Explanation of Duties** for each office will be explained at the NMRA meeting, November 4, 2014
(an abbreviated version is located below)
- **Nominations** will be made at/or before the NMRA meeting, November 18, 2014
- **Election of Officers** will be held at the NMRA meeting, December 2, 2014



Duties and Terms of Officers for the Chisholm Trail Division of NMRA

Only (Full, not Trial) members of the NMRA in good standing may vote and/or be officers.

Division Director for the Region

- shall be elected at the regular Division meeting to serve a term of three years.
- shall assist the Superintendent, shall preside for the Superintendent in their absence
- shall take the minutes of all meetings from which the Clerk is absent
- shall represent our Division to the MCoR.
- shall be elected as part of the regular election of officers to serve a term of three years.

Superintendent (President)

- will preside over Division and Board meetings
- shall represent the Division at all Regional meetings and functions at the request of, or
in the absence of the Division Director.
- will be an ex officio member of all committees except the Nominating and Audit Committees.
- may appoint the following committees and officials:
 - o 1. A Nominating Committee
 - o 2. An Audit Committee
 - o 3. An Editor for the official publication of the Division
 - o 4. An Achievement Program Coordinator
 - o 5. Membership Committee Chair
 - o 6. MCoR Convention Chair
 - o 7. Parliamentarian/Sargent of Arms/???
 - o 8. Other committees

Assistant Superintendent (Vice President)

- will act as Superintendent when the Superintendent is absent or otherwise unable to serve
- will perform any duties assigned by the Superintendent

Paymaster (Treasurer)

- shall keep a true account of all funds received and disbursed
- preparing financial reports.
- shall tender a proper accounting of the Division's finances at each business meeting
- shall be subject to an annual audit and review

Clerk (Secretary)

- will maintain the Division's files and records
- will take minutes at regular meetings and Board meetings
- see that Division events and activities are publicized

Volume/Year 1 • Number 2
November/December 2014

TRAILS, RAILS, & TALES
is published bi-monthly.
It is sent to members of the
Chisholm Trail Division of the NMRA

DIRECTOR

Philip Aylward
Aylward1@cox.net

SUPERINTENDENT

Larry E. Gulick
LegDag@cox.net

ASSISTANT SUPERINTENDENT

{...open...}
@

PAYMASTER/TREASURER

Philip Aylward
Aylward1@cox.net

CLERK/SECRETARY

Randy Stucky
Rita.Stucky@wesleymc.com

MEMBERSHIP CHAIR

{...open...}
@

ACHIEVEMENT PROGRAM CHAIR

{...open...}
@

MCoR CONVENTION CHAIR

Philip Aylward
Aylward1@cox.net

WEBMASTER

Jim Marlett
jMarlett@cox.net

Yahoo Discussion Group

<https://groups.yahoo.com/neo/groups/wamrr/info>

NEWSLETTER EDITOR

Dr. Alan A. Aagaard
alan.a.aagaard@gmail.com

NEWSLETTER ASSOCIATE EDITOR

Pamela Todd
ict_pamela@yahoo.com

URL

<http://>

Entries to be considered for
publication must be received by the Newsletter
Editor by the tenth day of
the month prior to the issue of
publication.
Alan A. Aagaard
alan.a.aagaard@gmail.com

CONTRIBUTORS

Larry E. Gulick, Jim Marlett, Lionel Smith, Jr.,
Pam Todd, and Alan A. Aagaard

To change your mailing address;
report a missing issue;
or make other membership inquiries,
either eMail or call.

COLOPHON

Designed and composed using
Adobe InDesign CS6™ on a
Macintosh MacBook Pro™
The main font families used were
COPPERPLATE GOTHIC,
Goudy Old Style,
Stone Sans Semi, & Symbol

EDITOR'S NOTE: In the previous edition of this Newsletter, the correct spelling should have been "Ronda" Hoover as the Hostess of the Summer Social. Additional correction on an award at the Turkey Creek Division Train Show held at Overland Park, KS - PAMELA TODD was presented the following plaque:

Second Place for Dioramas
and that her structure was also entered for the
NMRA Achievement category.



*Pam being presented her plaque
at the Turkey Creek Division - MCoR / NMRA
Photography by Larry Gulick*

...and bragging about our club's modelers...LARRY GULICK's structure was entered into the "Contest Room" at the recently held "34th Annual National Narrow Gauge Convention" (Overland Park, KS - 2014) and

http://model-railroad-hobbyist.com/sites/model-railroad-hobbyist.com/files/users/geoffb/IMG_9329.JPG

the above link will take you directly to his image (seen below) (I have PhotoShopped™ it, as the original was very dark and details were not clearly seen) on the "Model Railroad Hobbyist.com" WebSite.



We are all sad that **eNginE HOuse hObbies** has gone out of business. The last day was Saturday, October 19, 2014. What a day; I spent all day at the shop with my EHH t-shirt on. Some people showed up at 10:30am and waited for 11:00am. The first 3 hours were busy. Everything in the store was 70 percent off. We did find time to have lunch, Southeast carry-out Yum. We had some people come back more than twice; one returned 5 times.

eNginE HOuse hObbies will be missed.

The Prototype Models Meet is scheduled for November 1st & 2nd. The Chisholm Trail Division of the NMRA will be there. They do have some nice clinics.

Don't forget "The WICHITA TRAIN SHOW & SWAP MEET", will February 7th & 8th, 2015. We are looking for some people to present a clinic for the show. If you would like to present a clinic please let Larry or myself know.

Be safe in your travels.



Phil Aylward
Director
Chisholm Trail Division
of NMRA

Phil Aylward
Director
Chisholm Trail Division



FROM THE **SUPERINTENDENT'S** **D**ESK

Like a lot of people my age, I suspect that the first section of the newspaper that we turn to is the obituaries. In my case it's to see if my name is among those listed. If I make it past that, then I compare ages, to see if there were more younger or older than I who have passed on. Most of the time I will not be able to make it to the service, but I will be able to recall memories of the individual.

Even though these will not show up anywhere, I thought there should be some mention of their passing. After 22 years in business **eNginE HOuse hObbies** is closing it's doors, the conductor has called "ALL ABOARD" for the last time. We all have memories of the store on the west side of the street, with it's small room to watch videos. Then it moved across the street to the larger building (see above photo). There was room for an HO layout, a G scale layout (up high around the room), a room to watch videos, and at one time even a restaurant where the video room was! The business moved once again back into the building that it all started in. Through the years John LaRoe had many employees, most are still around, at least four are NMRA members, and some have gone on to that great layout up above where all the work is complete and everything runs perfectly. After John passed away, his wife Cameo took over the day to day operations of the business with the help of two dedicated long time employees, Don and Richard.

Once a month, since the mid-nineteen fifties, up to September of this year, I had received a copy of **Railroad Model Craftsman**. I do have to admit that it was never the first train magazine opened or read, but through the years I felt like many of the authors had become old friends. There were articles where brass engines would be cut up and kit bashed into something not available! For many years there would be track plans for sectional track that I could spend hours adding scenery, building structures, and running imaginary trains on. Lots of articles on how to super detail engines and rolling stock before the availability of the quality products we have today. The best part was always the last story in the magazine. It was a long running series on historical articles on our hobby, I felt like I remember seeing one of those, I had one of those, or I knew someone who had one! That series brought back a lot of good memories for me. My writings may be premature as there are stories around that someone has purchased and will continue to publish the magazine. I hope so, as I will continue to purchase and read my old friends writings. Here's to you, my old friend RMC !!!



Larry Gulick
Superintendent
Chisholm Trail Division
of NMRA

Larry Gulick
Superintendent
Chisholm Trail Division

Editor: just moments prior to my sending this to you all i received this eMail:
"Just got the mail and received a **NEW** Railroad Model Craftsman,
...Larry"

34th National Narrow Gauge Convention

Overland Park Convention Center

Overland Park, KS

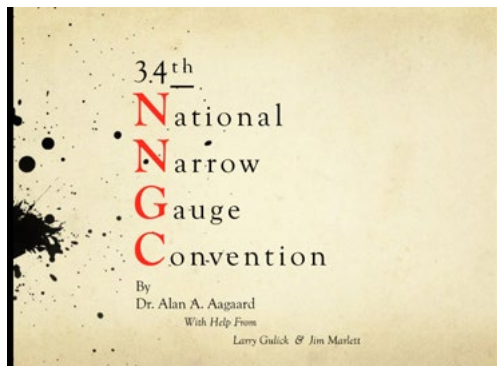
September 3rd - 6th, 2014



The 34th NATIONAL NARROW GAUGE CONVENTION was held September 3rd through 6th, 2014, in Overland Park, KS. It was a very full five days. There were ninety Clinics offered that started at 8:00am and went until 11:00am each morning. The evening clinics started at 6:30pm and went until 9:30pm and since most clinics were at least one hour or longer it was late getting out. The show was open the same hours as the clinics, 8:30am - 12:00 noon, then, opened 6:00pm - 9:30pm. By now you may have noticed that the afternoons were open. There were 50, that's like a 5 with a 0 after it, layouts to tour in the afternoon (throughout both KS and MO). I don't know if anyone could possibly visit all of them. Wednesday, I was touring alone and could only make five layouts. Thursday and Friday, I was lucky to ride with Jim and Patty Marlett, and Alan Aagaard, in which five or six layouts seemed to be about all we could get in an afternoon. They continued on with the show on Saturday. I know there was a lot of pictures taken; so the convention was well documented. There was a large hall devoted to the model contest. Excellent models from all over the world were on display; they ranged from good to fantastic!!! The people from the Wichita area that attended were: Alan Aagaard, Jim and Patty Marlett, Chuck and Sharon Ingram, Dr. Steen Mortensen, John and Julie Kraft, Bob and Ronda Hoover, and there may have been others. Sorry if I overlooked or forgot someone.



written by Larry Gulick

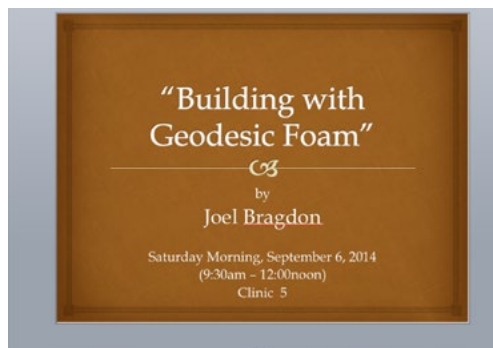


If you missed Alan Aagaard's (NMRA member) presentation to our evening meeting on October 7, 2014, please request copy from Alan for a CD.

It is a 143 slide PowerPoint™ which is "annotated" when viewed in the "Normal View" vs. the "Slide Show View".

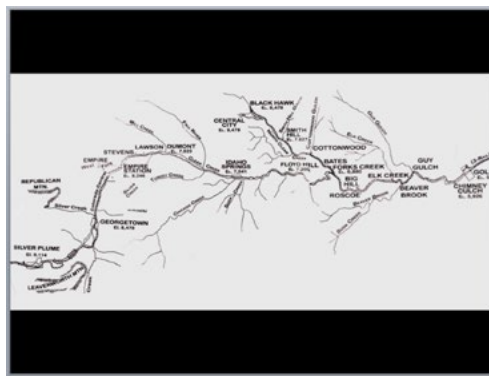
All-in-all, Alan took over 650 photos along with hundreds more taken by Larry Gulick, Jim Marlett, and Steen Mortensen (all NMRA members).

Clinics



"This is an in depth and comprehensive look at all aspects of building scenery from resin materials. A mountain railroad diorama will be built during the clinic from the bench-work up. Foam bench-work and roadbed, foam hard-shed and resin/foam rock casting will be demonstrated. Also, realistic coloring of rocks and scenery plus final detailing will be covered"





Clinics

Other clinics your NMRA members attended (list is only partial...)

- Scratchbuilding: Structures, Cars, and a Bridge using various materials
- Rivers, Rapids, and Rushing Water
- Roadways for our Railways
- Weathering Clinic by Joel Bragdon
- SketchIt™ Drawing Program
- Building Stuff - Rolling Stock, Vehicles, Details
- Painting with chalks
- ...to mention a few...



Celebratory Sightings



Layout Tours

Photography by Alan A. Aagaard

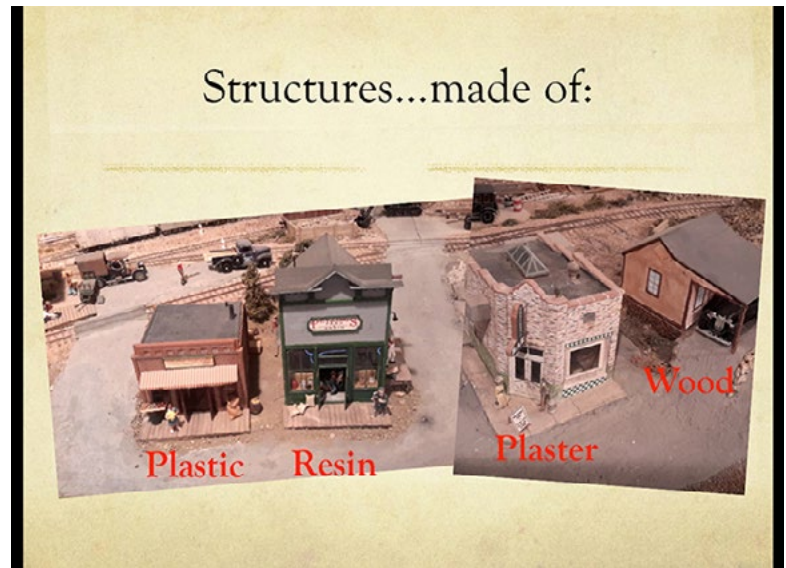




Photography by Alan A. Aagaard



Photography by Jim Marlett



Photography by Larry Gulick



Photography by Steen Mortensen

34th NNGC was headquartered in Overland Park, KS
(with activities held throughout both KS and MO

those in attendance, included:

- Alan A. Aagaard (On2-1/2), Newsletter Editor (winner of a \$25 door prize)
- Larry Gulick (On2-1/2), Superintendent (entered a structure in the "Contest Room")
- Jim Marlett (HOn3), Web Master and Yahoo Discussion Group Leader, and his wife Patty
- Bob Hoover (HO) and his wife Ronda (Saturday)
- Charles N. Ingrim (On2-1/2) and his wife Sharon
- Steen Mortensen (HOn3) (Friday & Saturday)

WAMRR LAYOUT TOURS - SEPTEMBER 13, 2014

A group of us met at the parking lot near eNginE HOuse hObbies, and caravanned to Wellington, KS to visit the home layout of Bill Butts. Bill has a large HO layout that occupies parts of four rooms in his basement. He models Santa Fe, Union Pacific, Rock Island, and Denver and Rio Grande. Bill uses a large, but uncluttered track plan and most of his layout has extremely well done scenery. NCE™ is his DCC system of choice, with many of his engines equipped with sound. A very well done layout.



Photography by Larry Gulick



"...it's a lie..."



...look behind "the Ham"; it's Roy Orbison...



"Not much privacy at this place!" according to Dan



After leaving Bill's home we stopped at the Panhandle Railroad Museum. They have a large personal collection of railroad items that P. H. Wiley had accumulated over his lifetime of employment with the Santa Fe railroad. The Museum owner Sherry Wiley, is standing beside a stove

donated by Bill Savage. Bill said it was a coal stove which was later converted to a gas fueled stove - once located in a Caboose. While in the Orient Yards, it was removed and just last year was donated to the Museum by Bill.

ATSF 1067 2-6-2 "Prairie" Type Locomotive sitting in Seller's Park across the Museum. According to the Wellington Daily News the 1067 has been sitting in Seller's Park across from the Museum, since February 1956. The steam locomotive was used as a passenger train and was designed in the early 1900s. The engine, in its heyday, could travel up to 100 mph and is estimated to have traveled



Photography by Pamela Todd

six million miles. As the Santa Fe railroad began phasing out steam locomotives for diesel engines, Wellington jumped on the chance to keep a piece of railroad history.

The Wishing Well Restaurant in Wellington, provided us with a good relaxing lunch.



After driving back to the west side of Wichita, we were treated to a visit to Paul Tucker's HO layout. Paul's is one of those rare completed layouts. He uses a combination of NCE DCC and DC with PFM sound system. Many of his engines have sound, all are highly detailed. Paul is a long time Santa Fe modeler with many scratch built and custom painted locomotives.

It is always a pleasure to visit Paul and his railroad.



Paul running trains



Photography by Larry Gulick



Photography by Pamela Todd

Paul Tucker's Turntable and Roundhouse

There were twenty five on the layout tour and a good time was had by everyone!
...EDITOR

GARDEN RAILWAY TOURS - SEPTEMBER 20, 2014

The Wichita Area Garden Railway Tour was held on Saturday, September 20, 2014. There were seven layouts on the tour, the same ones that were open last year. The weather was more cooperative this year. Last year there was early morning dampness which caused some running problems. Things went better this year with the sun out and the air being dryer. The trains were running well! Because of the open structure of this event it was difficult to gauge the attendance. The sign in sheets at the layouts seemed to be quite full. There were eight at the lunch.



*"When Pigs Fly" Fantasy Railway
Bill & Judi Wynne
Photography by Alan A. Aagaard*



"Wilson Gap"
Bruce & Carolyn Wilson
Photography by Alan A. Aagaard



"LMJ Railroad"
Larry & Marylou Dawley, and Joe Dawley
Photography by Larry E. Gulick



"The Gene Spear Garden Railway"
at Botanica
Photography by Alan A. Aagaard



"Lake George Garden Railway"
David & Lana McLain
Photography by Alan A. Aagaard



"D & M Railway"
David & Marie Rothenberger
Photography by Alan A. Aagaard



"San Luis & Rio Grande Southern RR"

Bob & Nancy Marin

Photography by Alan A. Aagaard

*Here are a few of the "Lunch Bunch"
at DeFazio's Italian Restaurant*

*Photography
by
Alan A. Aagaard*



WICHITA TOY TRAIN CLUB SHOW - SEPTEMBER 27-28, 2014



*Photographs of
Pamela Todd's Module
this page
by
Alan A. Aagaard*

Tom Smith

*Harry Bauer is approaching
Pamela Todd's module in foreground*



20th Annual Train Show and Swap Meet

September 27, 2014

Saturday: 9:00 – 5:00

September 28, 2014

Sunday: 11:00 – 4:00

Cessna Activity Center

2744 George Washington Blvd.

Wichita, Kansas

Admission: \$6.00 for both days

Children under 12 Free!

BUY – SELL – TRADE

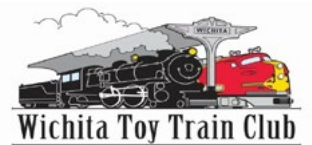
Over 100 Tables/40 Vendors all gauges
Operating Train Displays!

For information, contact:

Shari Shockey – mshockey@hughes.net

Jim Hickman – jwhickman@att.net

www.wichitatoytrainclub.org



20th Annual Train Show and Swap Meet

September 27, 2014

Saturday: 9:00 – 5:00

September 28, 2014

Sunday: 11:00 – 4:00

Cessna Activity Center

2744 George Washington Blvd.

Wichita, Kansas

Admission: \$6.00 for both days

Children under 12 Free!

BUY – SELL – TRADE

Over 100 Tables/40 Vendors all gauges
Operating Train Displays!

For information, contact:

Shari Shockey – mshockey@hughes.net

Jim Hickman – jwhickman@att.net

www.wichitatoytrainclub.org

Additional views of Pamela Todd's Module



Photography
by
Alan A. Aagaard



There was a large number of vendors and some new layouts. The show was well produced and executed flawlessly. The NMRA had an information table set up and manned part time. The NMRA had a lot of interaction with the crowd and vendors, and possibly recruited new members.

"N" SCALE LAYOUT - BY BOB GUENTHNER

Attached are a few photos of my recently completed N-scale layout built on a bedroom door.



NMRA's "GOLDEN SPIKE"

Several of Chisholm Trail's Golden Spike Award candidates are embarking on a project to create several 2 foot by 4 foot modules to complete several requirements of sections two and three of the NMRA Achievement qualifications checklist.

Here are those Golden Spike Achievement Award requirements:

Section 2 - Model Railroad Setting (Structures & Scenery) has these requirements:

- a. Construct a minimum of eight square feet of layout including scenery.
- b. Construct five structures either scratch built, craftsman kits or detailed commercial kits. These structures would be placed on the module or modules.

Section 3 - Engineering (Civil & Electrical)

- a. Three types of trackage required that is ballasted and installed on proper roadbed. (With turnouts, crossings, etc.)
- b. The track must be properly wired so that two trains can operate simultaneously, with a main track, a siding and block or command control.

Wayne Schlueter has been gracious in offering his guidance and mentoring based around a plan he found using lightweight construction materials. The plan is based around a construction technique developed by "Sipping & Switching Societies of North Carolina" and the "Ohio Valley Sipping & Switching Society." In addition to the design's lightweight, Wayne has enhanced construction of the modules by machining a template for accurate endplate production. Pam Todd, Wayne Schlueter and Tony LaLumia displayed a four-module sample of this construction method at the Wichita Toy Train Club Show at the Cessna Activity Center in September.

Once completed, Chisholm Trail NMRA should have an outstanding start to a module layout they can display at



local train shows and other events. If any additional NMRA members are interested in being part of the module project, please contact Lionel Smith at: (316) 239-1174.



Photography by Alan A. Aagaard

LETTERS FROM THE "ROAD"

Your writer is spending some time in Colorado and will periodically report on railroad topics from the area.

On our trip out to the mountains, we stopped by the Royal Gorge to see how the rebuilding is going after the disastrous forest fire that burnt 48 of the 52 structures at the town. It is nice to see the visitor's center is rebuilt and open to sell tickets to cross the bridge.

While there, we checked out D&RGW engine #499. We saw signs on the tender of how close the fire came to it. Turns out to have been very close as D&RGW caboose #0584, one of five narrow gauge, 26 foot "long cabooses" built by the Grande in 1900, was on display just behind the engine. It was a total loss and completely burnt to the ground.

Engine #499 is one of Denver & Rio Grande Western K-37, 2-8-2, Mikado type, narrow gauge steam locomotives. They were originally built by Baldwin as part of an order for thirty standard gauge 2-8-0, Consolidation type, locomotives, class 190, in 1902. They were re-numbered into class C-41 during the railroad's reorganization in 1924 and were converted to three foot gauge in 1928-30 at the railroad's Burnham Shops with many new parts including new frames and smaller drivers. They were then renumbered into class K-37.

Although the K-37s are actually about 2% lighter than the K-36s, they proved to be much harder on track. The D&S originally owned four of the K-37s, but found that the longer engines were too hard on their track, so they traded #499 to Royal Gorge Park in Canon City for #486.

Here is the address of our blog. It should be: www.Traversingthetrails.blogspot.com

Regards,
Julie & John Kraft

Further details: http://en.wikipedia.org/wiki/D%26RGW_K-37



Riding trains in California



The "Skunk Train" ride through the Redwood Forest was fantastic!

Trails, Rails, & Tales
November/ December 2014 14



Powered by GP9m ex SP. We stood in the open car. Linda bought a white hoodie, so it was a good thing our excursion was powered by diesel. The engineer showed us the steam engine that uses oil rather than coal.



The following day found us in Napa, CA. "The Wine Train" is a lavish experience as you take a 3 hour train trip through the beautiful Napa Valley. You may enjoy wine tasting in one direction and you also may opt for a "Five Star" dining adventure in the opposite direction. This is a true "wine country experience!!!"



Linda and Lionel Smith
October 21-22, 2014



passing through the
very fragrant
Eucalyptus groves

AUGUSTA MODEL RAILROAD CLUB LAUNCHES OPERATION SESSIONS

Several of the club members have been working diligently over the past few months to develop the components needed to conduct realistic operation sessions on the club layout. Lee Ryglinski and Ron Coppock have been the prime movers on this project. Ron Coppock is a retired Santa Fe dispatcher. The club has been making several changes to the layout to facilitate these sessions. Keith Ottman is in the process of installing the first phase of the signaling equipment to enable the club's use of JMRI software to control the signal system. But there is plenty of work left to do. Car cards, train numbering, schedules, dispatcher training, and engineer training are all planned or in progress. So, if you are the type of model railroader who loves prototype operations, you might want to join this group to help make this project a great success for the Wichita area. There are several NMRA members involved to help you enjoy this phase of model railroading. For more information about this project, contact Lionel Smith at (316) 239-1174.

written by Lionel Smith

WICHITA TOY TRAIN CLUB AND MUSEUM EXHIBIT

The Wichita Toy Train Club and Museum Exhibit Opening of the "Jerry Marcus Layout" on Saturday, October 18, 2014.



Photography by Pamela Todd

GREAT PLAINS TRANSPORTATION MUSEUM (WICHITA, KS)

NMRA members visited the Museum in Mid-Town/Old Town Area of Wichita on, Sunday, October 19, 2014. What great weather. Lots to enjoy; appreciate, and what a gift shop, they even had my engine for sale as a photograph.

written by Pamela Todd



Photography by Pamela Todd

NMRA - CHISHOLM TRAIL DIVISION - ANNOUNCEMENTS

Mid-Continent Prototype Modelers Railroad Prototype Model Meet Benton Lions' Community Center 150 South Main Street Benton, KS

Saturday, November 1st ~ 9am to 5pm
Sunday, November 2nd ~ 10:00am to 4:00pm

Featured at the meet:

- Spring Creek Model Trains of Nebraska will have a booth
- Southern Kansas Free-Mo will have an operating model railroad
 - Modeling Clinics will be conducted during the meet
 - Slide shows will be presented during the meet.
 - NMRA will have an information table

Cost for the meet: \$10.00

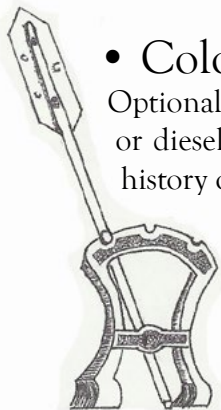
For more information eMail Glenn Hoover at:
MRL250@cox.net

NMRA Golden Spike Achievement Group
"Whale Belly" Modelers

Plan to display your "Bellies" and weathered and/or detailed locomotives and rolling stock



TRAIN RIDES



• Colorado Railroad Museum, Golden, CO

Optional train rides every Saturday. Catch a ride behind one of the Museum's steam or diesel locomotives in passenger cars from different eras in Colorado railroad history or on the uniquely Colorado Galloping Goose. Rides operate 10:00am to 4:00pm.

2014 Dates:

November 1, 8, 22, & 29, 2014

<http://coloradorailroadmuseum.org/train-rides-home/ride-the-rails/>



THE POLAR EXPRESS™

Performances run Fridays, Saturdays & Sundays

Beginning November 21st and running through December 28, 2014.

(additional performances on Wednesday, November 26th,

and Monday and Tuesday, Dec. 22nd & 23rd)

Show Times: 4:30pm 6:00pm 7:30pm - Each performance will last approximately 75 minutes.

Reservations Only!

Tickets are selling fast! Order yours today!

With the Colorado Railroad Museum as our backdrop, and our historic steam locomotive pulling vintage 1880's rail cars to our destination...The North Pole. You and your family will make lifelong memories as you become part of this magical event that brings to life the beloved book and the holiday favorite Warner Brothers movie starring Tom Hanks. Get your tickets now for this first ever Denver presentation of *THE POLAR EXPRESS*TM. **Wear your pajamas!**

The wonder never fades for those who believe.

For the first time in the history of the Colorado Railroad Museum, the story of *THE POLAR EXPRESS*TM is being theatrically re-created so you and your family can be immersed in the sights, sounds and intrigue of this classic children's tale. Prepare to be surrounded by the magic and wonder of the holiday season! You can almost discern the faint sound of sleigh bells in the distance. Before long, a scene from the story comes to life around you as dancing chefs and waiters arrive to serve cookies and hot chocolate. The wide-eyed children are invited to engage these winsome and inviting characters who are eager to hear from the youngsters about what makes the Christmas season special to them. While the hot chocolate lingers in your mouth and warms your belly, you hear the story told once again in its entirety. A smile grows on your face as you watch your child get absorbed in the wonderment of the story like never before in anticipation of their own journey aboard *THE POLAR EXPRESS*TM Train Ride.

After the storytelling concludes, the train conductor invites you and the other expectant passengers to assemble on the platform as your train arrives in a billow of steam. **"All aboooooard!"** Anticipation builds to a fevered pitch when the conductor punches your ticket and you step onto the rail car to be escorted to your seat.

Experience The First Gift of Christmas

Once your adventure aboard *THE POLAR EXPRESS*TM Train Ride begins, you notice other key elements of the story, both inside and outside your rail car, springing to life. Watch and listen as yet another scene unfolds onboard before your very eyes, giving you and your family the experience of becoming characters in the story's plot.

Upon arrival at the North Pole, keep your eyes peeled for Santa's sleigh, a bag of toys, and a giant Christmas tree. After the train slows to a stop, you find yourself delighting in the inspiring climax of the story as it takes place right outside your window. Children softly gasp as Santa presents The First Gift of Christmas to the boy.

- December: 6th & 7th; and December 13th & 14th, 2014.

Santa Claus Express

Midland Railway, Baldwin City, KS.

10:00am, 1:00pm, and 3:30pm.

Adults \$16 and Children (1-11) \$10

For more information check website: www.midlandrailway.org

SHOWS AND CONVENTIONS

- November 1-2

Mid-Continent Prototype Modelers Meet

Benton Community Center (Benton, KS)

Saturday, 9:00am - 5:00pm

Sunday, 10:00am - 3:00pm

Information: mcpmmeet@hotmail.com

- November 8, 2014

Cherryvale Hobby and Craft Show

Cherryvale Community Center (formerly National Guard Armory)

712 South Liberty Street (Cherryvale, KS 67335)

9:00 am to 6:00 pm

Admission:

General = \$6.00,

ages 6-18 = \$3.00,

5 and under = FREE

Get \$1.00 off with a canned food donation to the local food bank, \$1.00 off when you “LIKE” the Facebook™ page
contact: Jim Hogben (541) 661-1920

cherryvalehobbyandcraftshow@yahoo.com

- November 29th & 30th, 2014

Rocky Mountain Train Show: The Largest Train Show West of the Mississippi!

Denver Mart • 451 East 58th Ave • Denver, CO 80216

10:00am to 5:00pm both days. 120,000 sq. ft.

Adults and Kids 12 and over - \$9.00 Kids Under 12, Scouts in Uniform and Active Duty Military with ID - FREE

Make it a day or a weekend - Admission good for both days. Over 600 Tables of Toy Trains for Sale in ALL SCALES! Many Operating Train Layouts in All Scales and Gauges, How-to Clinics Over a dozen clinics sponsored by Caboose Hobbies covering topics from train setup to layout building and real railroad operations, Door Prize Drawings, Kids Corner featuring train races, Build-A-Layout project, Kid-In-A-Cab opportunity to run trains, the Greatest Save, hands-on.... Opportunity for Boy Scouts to work on and complete the requirements for the Railroading Merit Badge, Railroad Adventures, The show highlights railroad adventures, featuring representatives from tourist railroads and railroad museums across the region. Loco Doctor - Bring your old trains for the Loco Doctor to test and diagnose - repair services available after the show Hobby Store and Manufacturer Displays Free Parking

Additional information is available on our website- *www.RockyMountainTrainShow.com*

- December 13th & 14th, 2014

The Great Train Show™

Overland Park International Trade Center

Show Hours Saturday & Sunday, 10:00am - 4:00pm

The Great Train Show™ is the largest traveling model train show in the country, serving well-over 30 major cities. The Great Train Show™ is a national, traveling show that caters to the model railroad enthusiast. The show features 200-500 tables of train dealers, who offer everything from...HO Scale, N Scale, Lionel (O Gauge), G Gauge, Z Scale, American Flyer (S Gauge), hobby tools, die-cast vehicles, train whistles, scenery items, Railroadiana, Slides, t-shirts, videos, railroad gift items, books, photos and much, MUCH MORE ! Free Workshops for Beginners & Experienced Modelers! Ask Questions & Take Notes Talk With Model Railroading Experts!

The show offers a variety of operating model railroad and toy layouts for the entire family to enjoy in many different scales and gauges. Check them out and get some great ideas for your own layout! If you're interested in joining a local model railroading club, the Great Train Show is a great place to visit some of the different clubs in your area and learn more about them. If you're looking to sell an old toy train, this is the perfect place. You can get appraisals and offers from multiple dealers under the same roof! At the moment, we do not have an advance purchase option, but we are working on it. Tickets can be purchased right at the door. Not only do kids under 12 get in for free at our shows, but all of our shows are packed with things for kids to do! Examples of kid-friendly activities at past shows have included:

- Toy train play area
- Model railroad layouts they can operate
- Workshops on model railroading
- Lots of layouts featuring different scales

THE BEST TRAIN SHOW IN WICHITA

The Wichita Train Show & Swap Meet

Saturday February 7th from 9am to 6pm &
Sunday February 8th, 2015 from 11am to 4pm

Cessna Activity Center
2744 George Washington Blvd. • Wichita, KS

Sponsored in part by
Chisholm Trail Division of NMRA

Two Full Days of Excitement:
Over one hundred Vendor and Swap tables
Hourly Door Prizes
Modular Layouts
Switching, Modeling, and Photography Contests
Live Clinics, plus a kid's play area
Home Layout Tours

Admission: \$8.00 for both days
Children 10 & under free with paid adult
Scout in uniform in free / \$1.00 off with non perishable food item

Vendors: see attached sheet



COMING SOON

photos from November and December events



Trails, Rails, & Tales 20
November/ December 2014