



Trails, Rails, & Tales

The Official Newsletter of the *Chisholm Trail* Division of the **NMRA** & Wichita Area Model RailRoders

Volume 2 • Number 1

January - February, 2015

Schedule of Events

Be sure to mark your calendar

January, 2015

- Jan 1 "Happy New Year"
- Jan 6 **Evening** Meeting at the Olivet Baptist Church
3440 West 13th St N, Wichita, KS 67203-4560
(13th Street North & High Street)
Begin gathering -----6:45pm
NMRA • meeting -----7:00pm - 9:00pm
Discussion of the Election Process
Program by Rick Seyb
- Jan 20 WAMRR • **Luncheon** Meeting -----11:30am
Our Hostess is "Jessica" at Golden Coral
11006 East Kellogg Drive
Wichita, KS 67207-1922

February, 2015

- Feb 2 "Ground Hog Day"
- Feb 3 **Evening** Meeting at the Olivet Baptist Church
3440 West 13th St N, Wichita, KS 67203-4560
(13th Street North & High Street)
Begin gathering -----6:45pm
NMRA • meeting -----7:00pm - 9:00pm
Discussion of the Election Process
Program by Rich Seyb
- Feb 7 & 8 "Wichita Train Show & Swap Meet"
Cessna Activity Center • Wichita, KS



"???...**Geocaching**", anyone...???"
can you determine the location from
this EXTREME "close up"?
{...solution is on page 13}

- Feb 17 WAMRR • **Luncheon** Meeting -----11:30am
Our Hostess is "Jessica" at Golden Coral
11006 East Kellogg Drive
Wichita, KS 67207-1922

HAPPY NEW YEAR

Coming Attraction:

Our own Rick Seyb, NMRA member, will be presenting a professional presentation on "Steel & Rails" (his life and modeling in and around molten metal) Here are just a couple of images to get your curiosity up.



Tip of Month - January 2015

- Use the obvious household items in a NON-traditional way...Like:

Squirt a small amount of white/yellow adhesive onto a small piece of

- Waxed Paper and then using

- Toothpicks to apply small amounts of adhesive ONLY where you want it



• January 3, 2015, the **Mid-Co**ntinent **R**egion (MCoR) of NMRA will be having their Directors meeting in Kansas City. Our “Director” - Phil Aylward, and our “Supervisor” - Larry Gulick will be attending the meeting.

• June 4-6th 2015, Mid-Continent Region (MCoR) Convention hosted by South Central Missouri Area • Jefferson City, MO at the Capital Plaza Hotel for information or to help contact Brad Slone:

bradslone@yahoo.com

Checkout the webpage at:

showmecentral.com

Brad Slone, MMR

Division 09 • South Central Missouri Area

• During the November Golden Coral lunch meeting, there was discussion as to what constituted scratch built, when using a 3D printer or printed paper, for NMRA judging. If you're an NMRA member, this discussion from the NMRA Members area addresses this issue.

<http://nmra.org/sites/default/files/sr201406scratch.pdf>

David Heinsohn



JANUARY

1st • Marlett, Jim
19th • Gaul, Alan

FEBRUARY

7th • Stucky, Randy
17th • Neises, Rob
21st • Mortensen, Steen
21st • Seyb, Rick

Birthdays
January and February

Volume/Year 2 • Number 1
January/February 2015

TRAILS, RAILS, & TALES
is published bi-monthly.
It is sent to members of the
Chisholm Trail Division of the NMRA

DIRECTOR

Philip Aylward
Aylward1@cox.net

SUPERINTENDENT

Larry E. Gulick
LegDag@cox.net

ASSISTANT SUPERINTENDENT

{...open...}
@

PAYMASTER/TREASURER

Philip Aylward
Aylward1@cox.net

CLERK/SECRETARY

Randy Stucky
Rita.Stucky@wesleymc.com

MEMBERSHIP CHAIR

{...open...}
@

ACHIEVEMENT PROGRAM CHAIR

{...open...}
@

MCoR CONVENTION CHAIR

{...open...}
@

WEBMASTER

Jim Marlett
jMarlett@cox.net

Yahoo Discussion Group

<https://groups.yahoo.com/neo/groups/wamrr/info>

NEWSLETTER EDITOR

Dr. Alan A. Aagaard
alan.a.aagaard@gmail.com

NEWSLETTER ASSOCIATE EDITOR

Pamela Todd
ict_pamela@yahoo.com

URL

<http://>

Entries to be considered for publication must be received by the Newsletter Editor by the tenth day of the month prior to the issue of publication.

Alan A. Aagaard
alan.a.aagaard@gmail.com

CONTRIBUTORS

Larry E. Gulick, Jim Marlett, Lionel Smith, Jr., Pam Todd, and Alan A. Aagaard

To change your mailing address;
report a missing issue;
or make other membership inquiries,
either eMail or call.

COLOPHON

Designed and composed using
Adobe InDesign CS6™ on a
Macintosh MacBook Pro™
The main font families used were
COPPERPLATE GOTHIC,
Goudy Old Style,
Stone Sans Semi, & Symbol

Wichita NMRA Train Show Clinics

February 7, 2015

will offer valuable training for the modeler!

One of the great features of the annual Wichita NMRA Train Show is the clinics offered by skilled modelers. The clinics are free and open to any of the attendees coming to the show (space permitting) on Saturday February 7th.

There are four clinics planned for the morning and afternoon! Here is the schedule:

10:30 am – “Weathering with chinks and alcohol” *presented by Lionel Smith*

- This is a process slightly different than simply rubbing on chinks. It is a very forgiving technique allowing novices or experts the opportunity to weather like Mother Nature. The chinks and alcohol simulates the dirt and rain used by nature.
- The clinic will allow several attendees the opportunity to weather some rolling stock.

Clinic length: 1 hour 15 minutes

12:30 pm – “Making Trees for your layout” *presented by Pam Todd*

- Pam will demonstrate her methods of making realistic trees.
- While there are several methods and materials, Pam’s goal is to make trees that look “real!” You will enjoy learning her methods.

Clinic length: 1 hour

1:45 pm – “Model Railroad Structures and the 3D Printer” *presented by Kent Hurley*

- Kent is coming down from Kansas City to introduce techniques to create structure parts with a 3D Printer.
- The 3D printer opens a new era in creating objects that can be incorporated into model making.

Clinic length: 1 hour

3:00 pm – “Painting Figures – Bringing little pieces of plastic to life” *presented by Mark Fisher and Steve*

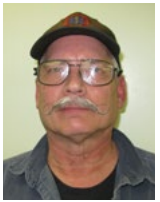
- You can purchase unpainted Model Railroad figures and turn them into lifelike people to populate your modeled scenery.
- This clinic will teach you techniques to paint these figures better than those expensive alternatives.

Clinic length: 1 hour

Wishing you a belated Merry Christmas & a Happy New Year yet to come.

We have had a good year for the Chisholm Trail Division. We have added new members; we are meeting, and I thank you all for your hard work.

On January 3, 2015, the **M**id-**C**ontinent **R**egion (MCoR) of NMRA will be having their Directors meeting in Kansas City. Larry and I will be at the meeting. We will have good report to give upon our return.



Phil Aylward
Director
Chisholm Trail Division
of NMRA

Looking forward to another great year.

Thank You

Phil Aylward
Director
Chisholm Trail Division

FROM THE **SUPERINTENDENT'S** **D**ESK

As I write this Christmas is (still) before us, and when you read this Christmas will be a memory. This gives us a chance to review some of our old memories. A lot of us that are close to my age, have memories of the toy catalogs that Sears, Roebuck & Co., J.C. Penny, and Montgomery Ward sent out. They must have been delivered sometime in October, and usually by Christmas they were well worn out because of the constant looking, drawing circles around the items that I wanted, and leaving the catalog out where your parents would see it.

The most memorable Christmas for me was 1954. I was eleven at the time and I don't remember what I wanted and asked for, but as a complete surprise to me my mother had taken a job as the cook at the school cafeteria and must have spent all her earnings on the biggest American Flyer train set they made. To the day she passed away, she would never tell me where in the house that set was hidden. I'm sure that I was not the only child that spent every free minute, while I was home alone, looking for my gifts. The American Flyer set had the K-4 Pacific



Larry Gulick
Superintendent
Chisholm Trail Division
of NMRA

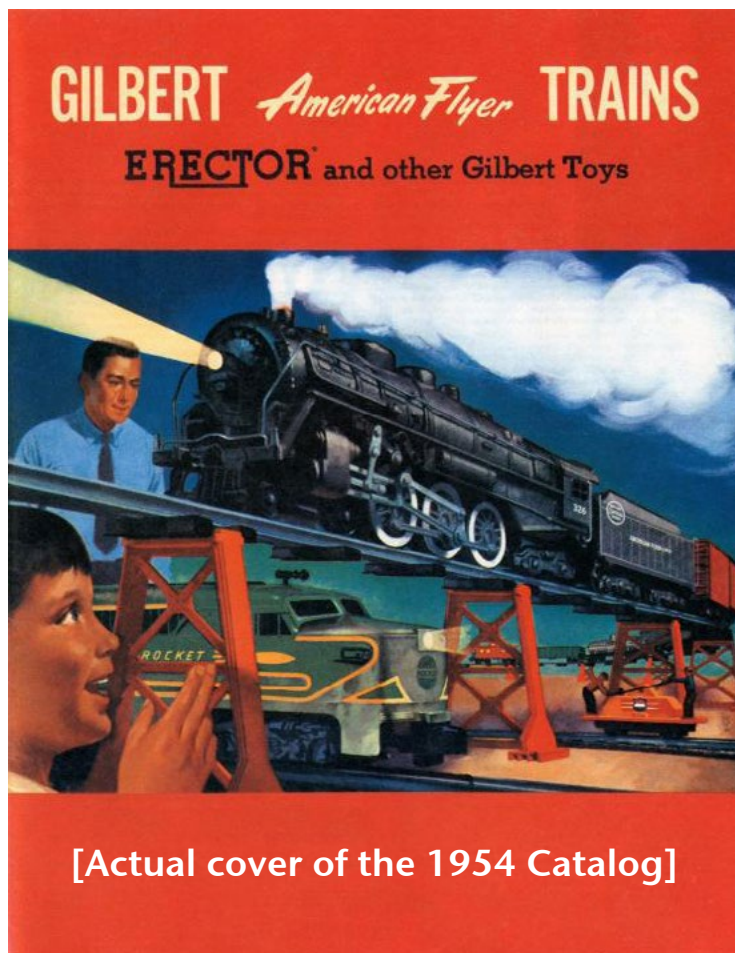
engine with smoke, five or six of the red passenger cars. The baggage car was capable of throwing out a small mail bag and snatching another mail bag off a post and placing it inside the car. There was enough track to go clear around the walls of a nine by twelve foot bedroom. It wasn't long before I had made buildings and mountains out of cardboard, at the time I don't think I had ever heard the word scale, but the entire empire looked good to a eleven year old railroad tycoon!

We have all seen the classic movie that is shown for twenty four hours solid around Christmas day. It starts out with lots of children plastered up against the department store windows and two Lionel sets running in opposite directions. One set appears to be a replica of the Union Pacific City of Salina, and the other set is a steam engine with quite a few freight cars. Never mind that some of the freight cars are way too new to be running on a 1930s layout. I have always thought that the story would have much better if Ralphie came down the stairs in his pink bunny pajamas to find a train set up around the Christmas tree.

At least he wouldn't have to worry about shooting his eye out!

Larry Gulick
Superintendent
Chisholm Trail Division

A belated Merry Christmas to all.



[Actual cover of the 1954 Catalog]

BENTON TRAIN SHOW - NOVEMBER 1, 2014



NMRA • Chisholm Trail Division Table near the front door of the show.
Left to right • Phil Aylward, Director; Larry Gulick, Superintendent; & Terry Ross.



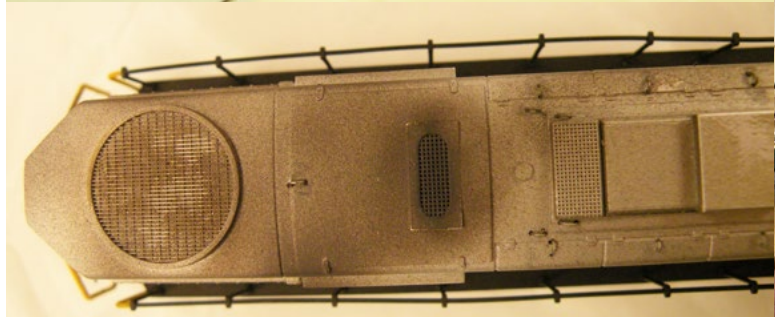
NMRA • Chisholm Trail Division Table near the front door of the show.
Left to right • Larry Gulick, Superintendent; & Randy Stucky, Clerk.



Photography by Pamela Todd



Lunch break - "FRESH fries"



Excellent weathering

Dueling cameras

Photography by Pamela Todd



"...happiness, is running trains."



Notice the broken glass in the windows



NMRA HOLIDAY CELEBRATION - DECEMBER 2, 2014

Oh, yes, we also had an official "Business Meeting, too



Thanks to everyone for turning and facing the camera!!



and that was just the "Punch-Line" (what was the joke?)

Photography by Alan A. Aagaard



Bill helping Brady, while the Dancy's Supervise...



Great fun for all ages



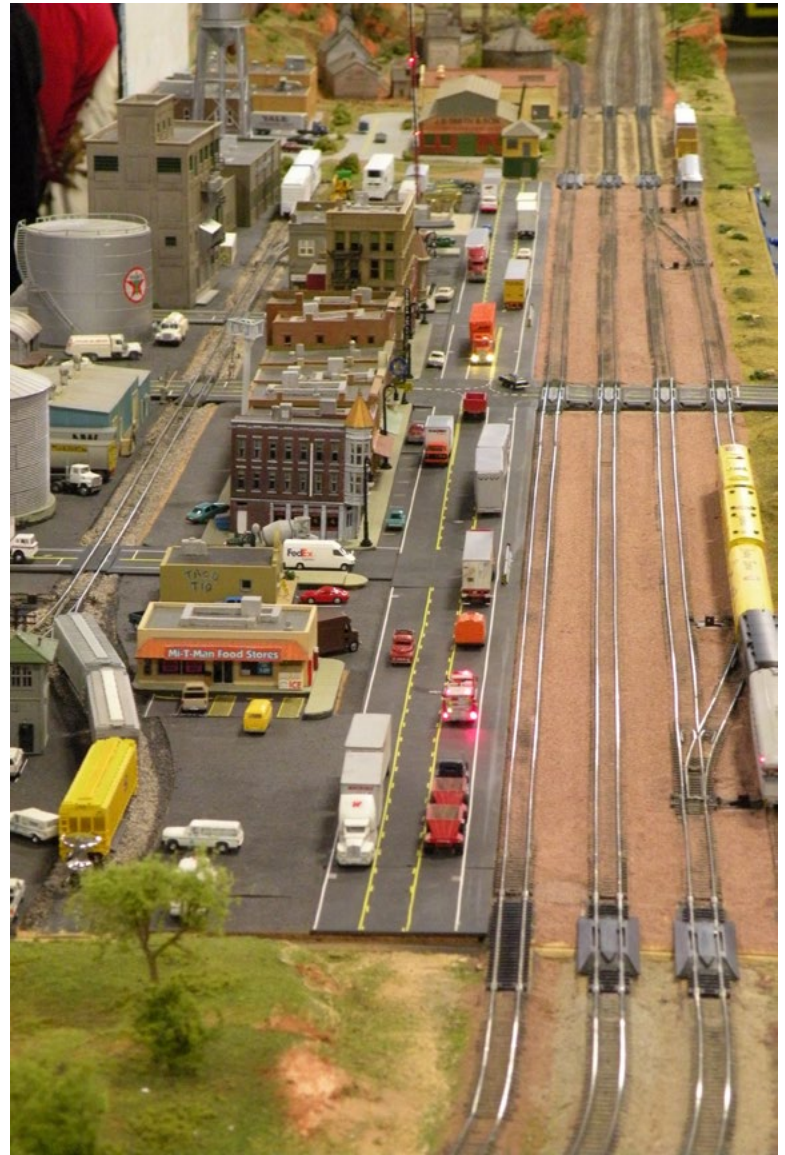
ya just gotta, love Lloyd Hurst's Christmas spirit

*Lloyd,
speaking for the entire group,
we are most grateful that you've
arranged for our evening meetings
at the church of where you worship*

THANKS!!!

OKLAHOMA TRAIN SHOW (OKC) - DECEMBER 6-7, 2014

I think that it was a good show, there were lots of vendors and the layouts must have all showed up as there was no empty space. There seemed to be a nice crowd. Three vendors carried On30 stock, one had 1/2 off, so I broke down and bought a long caboose with a side door - claimed Larry Gulick.



Larry Gulick reported that Terry Ross, Pam Todd, Rob Neises, Lionel Smith, Bill Savage, Justin Veik, and there were other people also, but I never could get them together for a group picture.





Photography by Pamela Todd



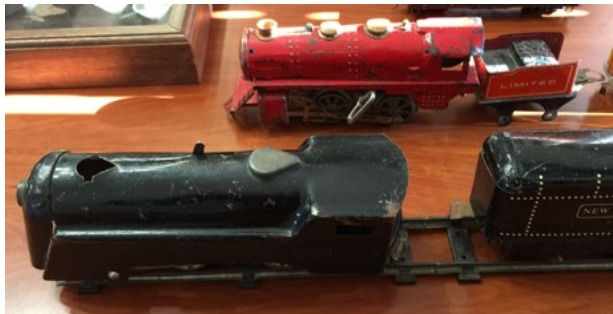
website to the artist...www.jordanart.com
and his eMail address is sales@jordanart.com
his phone (423) 490-8453





Here is the solution to the puzzle on page 1 • well...did you figure it out, or did you “cheat”???

“WORST Vs. BEST” TRAIN ITEM AS GIFT - DECEMBER 16, 2014



Husband and Wife - “Wind-Up Trains” from their youth(s)



...and it all began with my Son's first Christmas...



“It's been on my “Wish List” way too long”

Photography by Alan A. Aagaard

...and here's your history lesson

(for this issue)

written and photographed by Jim Marlett

They are called Greer patent spikes for the patent holder, Howard Greer, or sometimes Jeffery spikes for E.T. Jeffery, who had nothing to do with the spikes as far as I can tell. Jeffery was the president of the D&RG and the receiver of the Rio Grande Southern during their 1893 bankruptcy. He was apparently much disliked by the RGS folks. They also didn't like the Greer patent spikes, so the supposedly started calling them by Jeffery's name.

I understand that the way they were manufactured was they were rolled out on a plate (for lack of a better word) of steel so the plate had the profile of the spike down the whole length. Then the plate was sheered to produce the spike. The double-headed design was supposed to have made them easier to remove with a special pry bar. I have also read that the **spike itself was tempered** and the **head annealed** so it was less likely to break when hammered. I've never seen any proof



Here is the shadow box my wife made me for Christmas one year - my favorite railroad related Christmas gift.

of that. I have a pdf of what I believe is the patent for the spike (see left). Greer patented many spike designs and one of the ones I have includes the profile I find on the RGS. Anyhow, the patent says the double head is to make them easier to remove so that is probably the real reason for it.

The spikes were used when the Rio Grande Southern reLayed its original 30 lb. rail with 57 lb. rail between Vance Junction and Rico. I don't believe they were used system wide, but I suspect the railroaders used whatever they had at hand, when they needed a spike anywhere on the line, so I wouldn't be surprised to see one anywhere on the RGS. The railroaders hated them because they tended to bend. I also suspect they broke rather easily since I have found gobs of heads without "bodies" and shafts without heads.

Other railroads used some as well. The D&RGW used some on the Lake City Branch. The Colorado & Southern used them on the Boreas Pass line. The Silverton Northern used some, and they have supposedly been found on the wye at Gladstone on the Silverton Gladstone and Northerly. A few have been found on the standard gauge Colorado Midland, but the most interesting use to me as a Kansan was on the Kansas City, Fort Scott, and

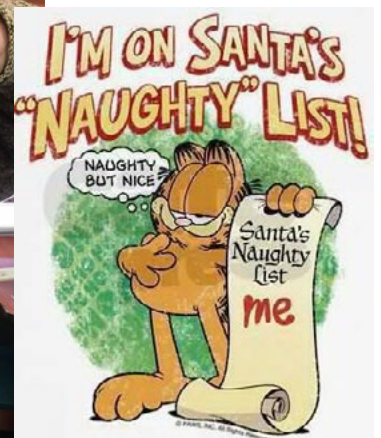
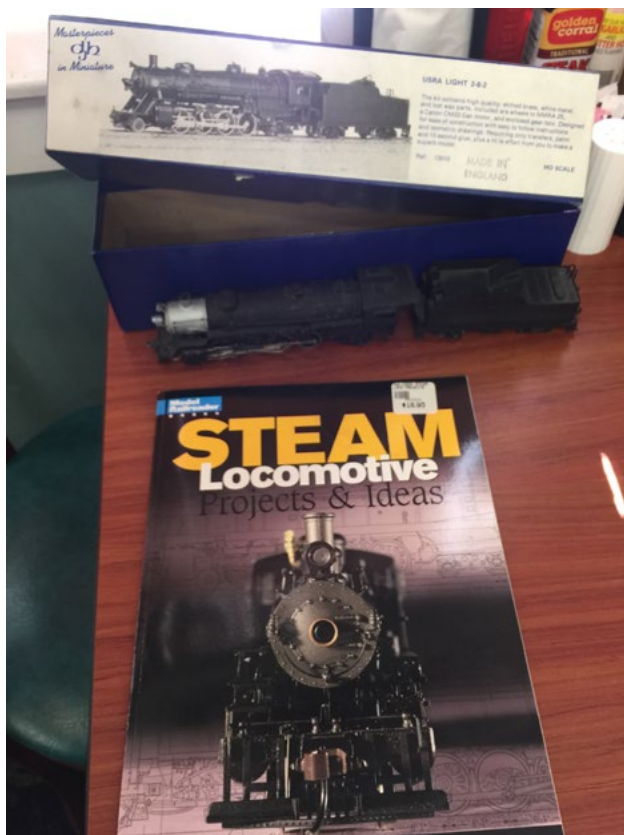


Memphis Railroad, which I know virtually nothing about. I understand it eventually became associated with or part of the Frisco.

More than you ever wanted to know.

Apparently the “special tool” for removal was not patented by Greer. His plan was to use regular spike removal pry bars, but brace them along the rail base parallel to the rail rather than bracing against the tie, which could be less than a firm platform. Of course, being made the way they were, you couldn’t pull them out in the conventional manner since there was nothing to grab hold of on the sides of the spike. It seems that the Rio Grande

Southern folks got tired of the pry bar slipping off the rail base and just welded up a tool that had prongs on the side like an “F” so they could pull them out with the bar going the traditional way.



Photography by Alan A. Aagaard

Lionel Smith, Sr. built this station from scraps during the fall of 1945. His dream come true. Finally a son old enough to give an electric train for Christmas.

Photography by Lionel Smith, Jr.



Hi from Trains 'N Toys at Garden Railway Gizmos. Thanks for letting me introduce myself at your November meeting. Wanted to give you a little update on where the store is at this point. Picture shows the beginnings.

Have started bringing in N and HO items as well as non-scale like calendars. Adding items as someone comes in looking for them. Open to suggestions from you all. Have a couple of calendar versions, one from Trains and one from Model Railroader. Speaking of Model Railroader, it is now in the store for your fun time reading. There is flex track and cork roadbed. Didn't know that Atlas is so hard to find. Even when I ordered joiners, rule was only one card (6 packs).

Am learning about power in smaller scales. HO with DCC takes more amps than I thought, although I really had no idea. If anyone is looking for a starting supply, there are three consignment ones in. There is a power supply company that you might not be familiar with - BridgewaterTM (however, they call them power controllers). They are the ones that I get for G-scale folks because they are straight volts and amps, not volt-amps. They have a nice little one that is 3 amps with variable momen-

tum control. Runs about the same as the high end MRC.

Been working with G-scale for about 30 years, but the smaller scales are a new adventure. Have actually had a couple of orders and am willing to work with you all in any way that helps you and brings me greater understanding about the smaller sizes.

Claudia Rollstin
Garden Railway Gizmos
(316) 262-4300
www.gardenrailwaygizmos.com

LETTERS FROM THE "ROAD"

"ROAD TRIP"

with Dan Hagenbuch

This is Dan, and while I was in Hutchinson, KS I noticed these airplane fuselages were still aboard their assigned train cars, not in their "river bath" yet (LoL).



Make a guess where this train is located...

HINT: It's in Kansas



Next, my "train chasing" took me to Oswego, Kansas, where I encountered this "Well-Weathered" MKT caboose



"...Let it snow;
Let it snow;
Let it snow!!!"
(Atchison, KS)



What kind of dancer was this guy?



Good looking old building in Fredonia, KS.

It has inspired

Dan to model it for his train layout. (He liked the windows, brick, and stone features). Go ahead, take your time and study the variations/details.



"N" SCALE LAYOUT - BY BOB GUENTHNER



Here are some photos of the N scale layout I recently built on a bedroom door that we had replaced. One side is loosely based on the area around Durango and Silverton and the other is an old Western town in New Mexico.

Bob Guenther



"N" SCALE LAYOUT - BY CHUCK DUGNOLLE

Trestle on the stub to Kaitlyn Korner leading to "Badgers Arse"



HO
New York Central Railroad



CHUCK
PROMISES MORE INSTALLMENTS
ARE
COMING SOON



"TIP OF THE MONTH: FEBRUARY"

Here we have some uses of containers that we find around the house. The first is a Parmesan cheese container. If you look closely this container resembles the Woodland Scenics shaker canister that sells for around five dollars. To me, the big difference is that the cheese container sells for around three dollars and you get to use the cheese! (First Picture)



This is a picture of the lid, one side has three smaller openings. (Second Picture)



The other side has a large opening. (Third Picture)

Photography by Larry Gulick



If you decide that you need smaller openings you can drill holes in the lid, to whatever size you want. (Fourth Picture)



Here are some examples of the different containers with different lids and labels for their contents. (Sixth Picture)



Some of the scenery products are more coarse so

I have used jars with a larger opening. (Seventh Picture)



A different style of container is used for dirt, sand, and different sizes and colors of rocks. (Eighth and Ninth Picture)



The cost of raising your cholesterol and carb intake was not considered in this project!

A DAYTRIP TO PARADISE (BY LIONEL SMITH)



For *most folks* in the Wichita area, a trip to South Central Nebraska might sound like a trip to nowhere. To a **model railroader**, a daytrip to Deshler, Nebraska is a trip to "paradise!" Spring Creek Model Trains is located just a short distance over the Kansas-Nebraska border directly north of Concordia, Kansas. Traveling north on US 81, just south of Hebron, Nebraska, you will want to turn west on US 136. Then it is just a few miles to Deshler.

You have seen Deb and Dave Zucker over and over again at area train shows. They roll in the racks of new inventory, offering high quality new model railroad products at great prices. But going to their location in Deshler will change your entire perception of Spring Creek Model Trains. They have developed their company into a major outlet for most of the major manufactures. They have a very organized inventory system so they can process phone orders quickly. As Deb said, "There is so much more to our inventory than we can transport to the area train shows!" She was right, with rows and rows of items organized so you find that locomotive, car, structure, or accessory in a flash.

You will have to make that trip to Deshler on a weekday, because they are closed on weekends. No, they are not at home watching football games. Most likely they have driven hundreds



of miles to a train show somewhere on the Great Plains. Where do they get all of that energy?

So why is Spring Creek Model Trains in Deshler? Deb's dad was the last agent for the Rock Island Railroad in Deshler? Dave's family moved to Deshler when Dave was a kid. Dave's dad purchased a chicken hatchery in Deshler. They were two kids from Deshler who have lived there since childhood. Today, they are two wonderful people, with their great staff, work-



Yes,
we saw her
at the
Benton Show



ing very hard so we can enjoy the hobby of model railroading out here in Middle America.

Travel time: Wichita, Kansas to Deshler, Nebraska - Approx. 2 hours & 45 min.



Store hours: Monday - Friday 10 am - 6 pm. Closed weekends.

Food: Plan to have lunch at the Rock Island Crossing Restaurant in Deshler.



Photography by Lionel Smith

TRAIN RIDES

• Colorado Railroad Museum • Golden, CO

Optional train rides every Saturday. Catch a ride behind one of the Museum's steam or diesel locomotives in passenger cars from different eras in Colorado railroad history or on the uniquely Colorado Galloping Goose.

Rides operate 10:00am to 4:00pm.

2015 Dates:

January 3, 10, 17, 24, & 31, 2015

February 7, 14, 21, 28, 2015

• Colorado Rails & Cocktails (adult series)"

An Evening of Colorado History

We are offering this new series of adult lectures that will take you back to the time when railroads shaped the American West. So come relax, enjoy a beverage, and learn more about Colorado Railroad's and the affect they have had on our history. We also offer a 20% discount on in-store purchases made during each event.

2015 Series:

- February 6 ~ "Life of a Railroad Station Agent Telegrapher"
- April, 17 ~ "Hell on Wheels: Wicked Towns Along the Union Pacific Railroad"
- June 12 ~ "I've Been Working on the Railroad: The Life & Times of a Gandy Dancer"
- August 28 ~ "Zephyrettes & Courier Nurses"
- October 9 ~ "Railroad Stories: Otto Mears"
- November 13 ~ "Railroading in the Rockies"

Tickets include a beverage of your choice: beer, wine or soda and snacks. Doors open at 6:00pm for early enjoyment of attractions.

Admission for events: \$12 for members and \$15 for non-members. Advanced Tickets Required, 21 and older only.

Advance ticket purchase is recommended and will be available shortly. Please call 1 (303) 279-4591 or visit our Online Depot General Store to order tickets.

<http://coloradorailroadmuseum.org/train-rides-home/ride-the-rails/>

Educational shows are packed with things for kids to do! Examples of kid-friendly activities at past shows have included:

- Toy train play area
- Model railroad layouts they can operate
- Workshops on model railroading
- Lots of layouts featuring different scales

In our next issue:

Chuck Ingram shares the first images of his home layout;

Rick Seyb shares more of "Steel and Rails"

Chuck Dugnolle visits the Arizona Railroad Museum in Chandler, AZ

"Tips of the Month" and much, MUCH more...