

Trails, Rails, & Tales



May - June, 2016
Volume 3 • Number 3

The Official Newsletter of the *Chisholm Trail Division* of the **NMRA**

¿ “...MAYFLOWERS...” ?

contributors

LINDA HARPER Shares six famous train robbers ~ pages 9 - 11



CHUCK DUGNOLLE Shares Penn Station Museum in Baltimore, MD ~ page 16

GENE BOWERS has begun Construction on his Layout / Layout Room ~ pages 17 - 19



CHARLES INGRIM has finally uncrossed his wires...has his Pike running under DCC ~ pages 20 & 21



LARRY GULICK will be presenting another video clinic on Tree Building ~ page 22.



Schedule of Events

Be sure to mark your calendar

May, 2016

- May 3 **Evening** Meeting at the Olivet Baptist Church
3440 West 13th St N, Wichita, KS 67203-4560
(13th Street North & High Street)
Begin gathering -----6:45pm
• NMRA meeting -----7:00pm - 9:00pm
° Short business meeting, to be followed by:
° Program I
° Program II
- May 17 WAMRR • **Luncheon** Meeting ----- 11:30am
Our Hostess is “Bere” at Golden Coral
11006 East Kellogg Drive
Wichita, KS 67207-1922

June, 2016

- June 2-5 2016 Mid-Continent Regional (MCoR) Convention
Headquarters hotel - Hilton: Garden Inn
Train show at Ralston, Nebraska Arena
Details available on the Western Heritage Division
website: <http://whd.mcor-nmra.org>
- June 7 **Evening** Meeting at the Olivet Baptist Church
3440 West 13th St N, Wichita, KS 67203-4560
(13th Street North & High Street)
Begin gathering -----6:45pm
• NMRA meeting -----7:00pm - 9:00pm
° Short business meeting, to be followed by:
° Program I
° Program II
- June 21 WAMRR • **Luncheon** Meeting ----- 11:30am
Our Hostess is “Bere” at Golden Coral
11006 East Kellogg Drive
Wichita, KS 67207-1922
- June 22-26 Santa Fe Railway Historical & Modeling Society ~
Convention: “Wichita Express”
Wichita Marriott: East
More details available
<http://atsfrr.com/convention/2016%20Wichita/Index.htm>

FROM THE DIRECTOR'S DESK

Hope you all will be safe in your travels in the coming months. You might like this: Vince Marshall presents: "The Electric Railway: how the AVI served south-central Kansas" by moving people and goods between Wichita, Newton, Halstead and Hutchinson from 1910 - 1941.

Tour the local AVI depot after the presentation. Sponsored by the Halstead Historical Society. Free to the public.

Thank You. *Phil Aylward*
Director
Chisholm Trail Division



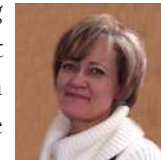
Phil Aylward
Director
Chisholm Trail Division
of NMRA

FROM THE SUPERINTENDENT'S DESK

Recommending that you attend the Santa Fe Railway Historical & Modeling Society "Wichita Express" Convention June 22-26 being held at the Marriott East. I will be attending all the events as well as the clinics and the steam train excursion out of Abilene. You don't have to model the prototype to learn from the speakers and enjoy all the activities. There will also be model railroad and photo contests, annual awards banquet night.

I encourage everyone to take advantage of these highly talented clinicians, layout tours, vendors and special programs that have been prepared for this convention.

Happy Railfanning
Pamela Todd
Superintendent - 2016
Chisholm Trail Division



Pamela Todd
Superintendent - 2016
Chisholm Trail Division
of NMRA

FROM THE ASSISTANT SUPERINTENDENT'S DESK

It's that time of the year, the time when there are many things wrestling for your free time. End of school activities, graduation, and spring fever compete with rail time.

But area modelers aren't giving up. A trip to Spring Creek is coming up/just happened. If you haven't went yet, I implore you to make the trip. Spring/summer railfanning trips are being planned - rv roadtrip ! And a plan in the area to build a modular rail example to show off what area modelers are doing.

Enjoy those outside activities (anyone thinking G-Scale...lol). Seriously, enjoy your spring and summer activities, including model railroading.

Rob Neises
Assistant Superintendent - 2016
Chisholm Trail Division



Rob Neises
Assistant Superintendent - 2016
Chisholm Trail Division
of NMRA

Volume/Year 3 • Number 3
May/June 2016

TRAILS, RAILS, & TALES

is published bi-monthly.
It is sent to members of the
Chisholm Trail Division of the NMRA

DIRECTOR
Philip Aylward
Aylward1@cox.net

SUPERINTENDENT
Pamela Todd
ict_pamela@yahoo.com

ASSISTANT SUPERINTENDENT
Rob Neises
jgr_racing@yahoo.com

PAST-SUPERINTENDENT
Lionel M. Smith, Jr.
LionelSmithJr@Cloud.com
2015 - 2016

PAYMASTER/TREASURER
Philip Aylward
Aylward1@cox.net

CLERK/SECRETARY
Randy Stucky
Rita.Stucky@wesleymc.com

MEMBERSHIP CHAIR
Dean Lippincott
dean.lippincott@gmail.com

PROGRAM CHAIR
Larry E. Gulick
legdag@cox.net

HOSPITALITY CHAIR
Dan Hagenbuch
dhagenbuch@att.net

ACHIEVEMENT PROGRAM CHAIR
Chris C. Dancy
cjdancy@cox.net

MCoR CONVENTION CHAIR
{...open...}
@

WEBMASTER
Rob Neises
jgr_racing@yahoo.com

URL
<http://www.>

YAHOO DISCUSSION GROUP
<https://groups.yahoo.com/neo/groups/wamrr/info>
Jim Marlett
jMarlett@cox.net

NEWSLETTER EDITOR
Dr. Alan A. Aagaard
alan.a.aagaard@gmail.com

NEWSLETTER ASSOCIATE EDITOR
Gene Bowers
112reNewed1012@cox.net

Entries to be considered for
publication must be received by the
Newsletter Editor by the tenth day of the month
prior to the issue of publication.
Alan A. Aagaard
alan.a.aagaard@gmail.com

CONTRIBUTORS
Fred Kraft, Phil Aylward, Randy Stucky, Dan
Hagenbuch, Pam Todd, and Alan A. Aagaard

To change your mailing address;
report a missing issue;
or make other membership inquiries,
either eMail or call.

COLOPHON
Designed and composed using
Adobe InDesign, Illustrator & PhotoShop CS6™
on a
Macintosh MacBook Pro™
The main font families used were
COPPERPLATE GOTHIC,
Goudy Old Style,
Stone Sans Semi, & Symbol

Hello, my name is Alan, and I'm a Book-a-holic... {and, yes, I am being respectful to...}



Alan A. Aagaard
Newsletter Editor
Chisholm Trail Division
of NMRA

My column, this issue, is devoted to the many books which I have discovered since April's issue went out to y'all. In fact, so many that you will be presented more depth on pages XX-XX.

Published correspondence may be edited for length or style. All published letters become the property of this Newsletter. When submitting items/future articles, please-Please-PLEASE:

- Send your text separate from your graphics/photos.
- Please submit photos in as large a format (the most pixels) as possible.

Deadlines are as follows: to appear in the:

• January/February issue, please submit prior to December 15th; March/April issue, please submit prior to February 15th; May/June issue, please submit prior to April 15th; July/August issue, please submit prior to June 15th; September/October issue, please submit prior to August 15th; November/December issue, please submit prior to October 15th). Send your questions, thoughts, comments via eMail to: alan.a.aagaard@gmail.com

Alan A. Aagaard
Newsletter Editor
Chisholm Trail Division



MAY

19th • Lionel S.

JUNE

10th • Phil A.

20th • Bill B.

21st • Bob G.

Birthdays
May and June



looking back at our past events...

NMRA

meeting
March 1, 2016

Business Meeting was called to order at 7:00pm by Pamela Todd, Superintendent

Event Agenda:

NMRA Meeting - Question & Answer Handout

Part 1

Lloyd Hurst ~ "DEPOTS IN KANSAS"

Lloyd presented both past and current Depots in Kansas, from about every railroad in the State.

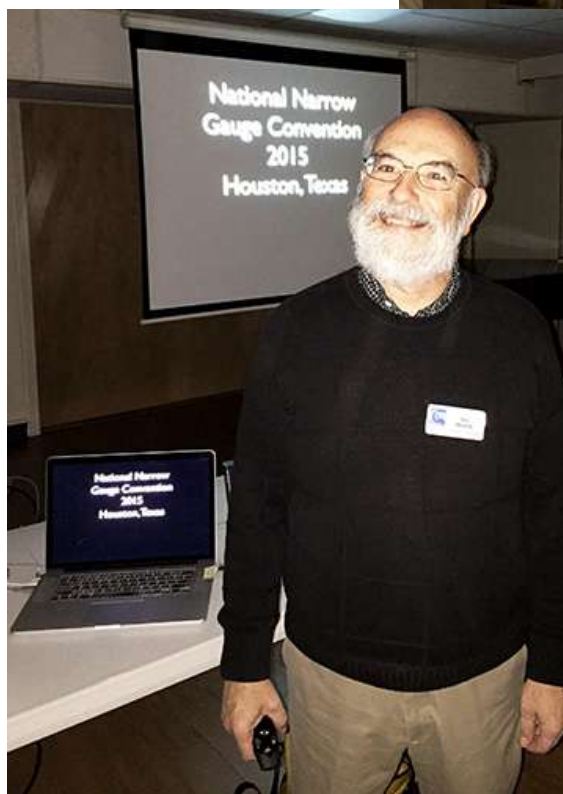
Part 2

Jim Marlett ~ "PART 1 ~ NATIONAL NARROW GAUGE CONVENTION"

Jim will be sharing a slide presentation of the Houston Convention -

Many Narrow Gauge layouts and layout tours.

The evening ended at 9:00pm



WICHITA AREA MODEL RAILROADERS

Monthly Luncheon Meeting

March 15, 2016

11:30am at Golden Corral

11006 East Kellogg Drive

Wichita, KS 67207-1922

(Just a short distance west of Greenwich Road on north side of street)

Our Hostess is "Bere"



Food, Fun, and Fellowship!
That's the reason for...Wichita Area Model Railroaders,
a fellowship of model railroaders in the Wichita, Kansas area.

*****Tuesday's Program*****

Preview the
June 21-26, 2016

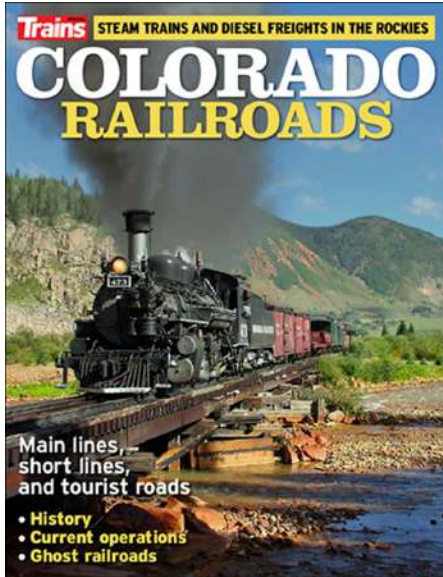
Santa Fe Railway Historical & Modeler's Society Annual Convention

Wichita Marriott: East

Discussion included:
Registration costs
Drinks
and
Rail trips

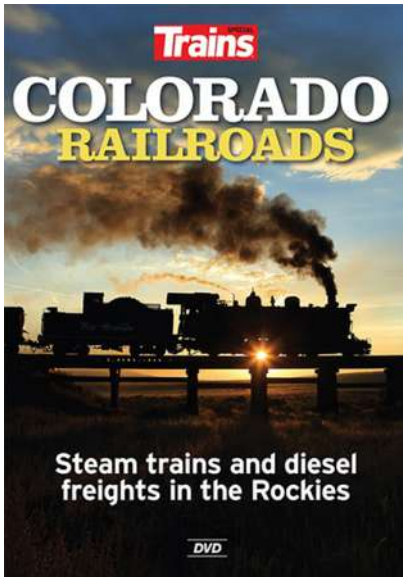
New on the Shelf

currently available from Claudia Ralston at
Garden Railway Gizmos
1425 North Broadway
Wichita, KS 67214-1103
(316) 262-4300
car.grrg@att.net
www.GardenRailwayGizmos.com



Colorado Railroads takes a look at all of the drama and dream destinations in this exciting railroading region. This 100-page special issue from Trains magazine features all-new material including:

- An overview of Colorado railroads and their history.
- The famous Moffat Tunnel Route through the Rockies.
- Denver Union Station's revival and renaissance.
- The Joint Line route along the Front Range through Denver.
- Famous narrow gauge tourist railroads including Durango & Silverton, Cumbres & Toltec, Georgetown Loop, and others.
- The famous Colorado Railroad Museum in Golden.
- And more!



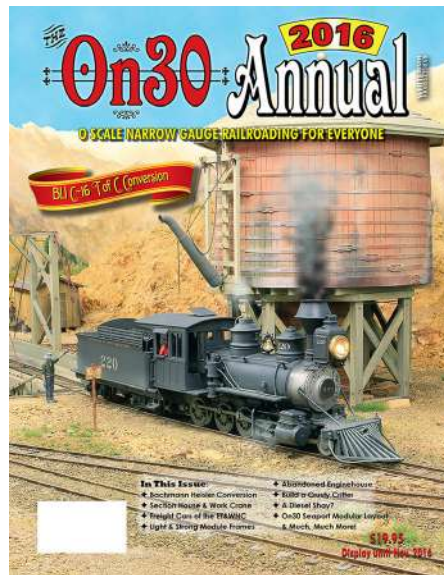
The 1-hour DVD shows the highlights of Colorado Railroads today!

COLORADO RAILROADS DVD takes a look at all of the drama and dream destinations in this exciting railroading region. You'll get interviews, maps, and Colorado railroads in action. Don't miss out on this footage exclusive to Trains.



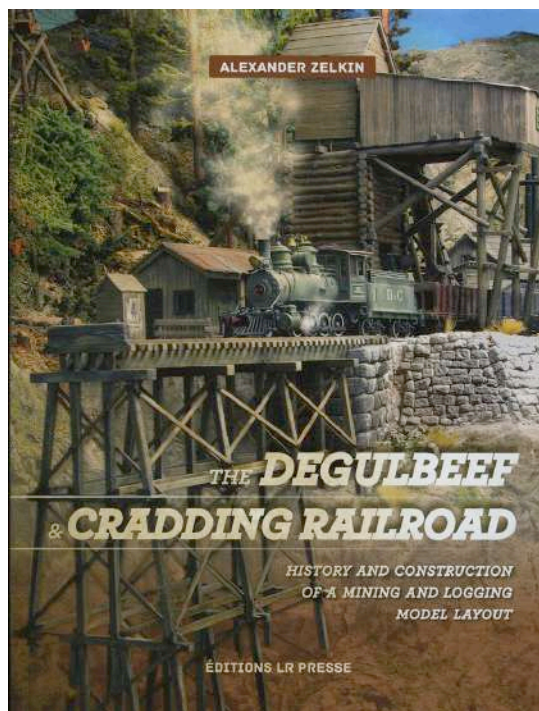
2016 On30 Annual

- 8 Customizing a Whitcomb Critter
- 14 Taylor Machine Company
- 18 The Pinnacle Creek Mining & Timber Co.
- 24 Bachmann Boxcar Variations
- 28 Freight Equipment of the Tweetsie
- 38 An Evolved On30 Module Framework
- 43 The Abandoned Enginehouse
- 48 Modeling With Foil
- 43 "De-Stocking" a Bachmann Stock Car
- 50 Backdating the Broadway Limited C-16
- 60 Section Houses and MOW Equipment



- 63 Modeling Tweetsie Freight Cars
- 68 Building a Diesel-Shay
- 72 Mid-Hudson On30 Meet MOW Contest
- 80 The Water Wagon
- 82 In The Eye of the Beholder
- 87 Bachmann Heisler Conversion - Part 2
- 86 Build A Crusty Critter
- 94 Modeling On30 Sugar Cane Cars
- 98 Shelter Cove
- 104 An Elderly Modeler's Scenery Woes
- 105 On30 Product Spotlight

The Degulbeef & Cradding Railroad, Route of the Dinosaurs



The Degulbeef & Cradding Railroad, Route of the Dinosaurs by Alexander Zelkin

586 Photos and The History and Construction of a Mining and Logging Model Layout

The Degulbeef & Cradding Railroad is a fictitious Pacific Northwest mining and logging system in the Roaring Twenties. With humor and wittiness, outstanding modeler Alexander Zelkin tells about his Sn3 layout, and his own life as well, while sharing with us his techniques in 30 lavishly illustrated tutorials. More than a third of the book is devoted to how-to material, and includes dozens of how-to photos.

The 20-minute DVD included with the book features, in a jesting spirit and with fun, the particularities of such an achievement, as presented by its author, who has published many articles in the Narrow Gauge & Short Line Gazette.

192 pages, hard cover, 8.5" x 11.5", all color, \$64.95 includes a 20-minute color DVD



Shipping & handling:

U.S. \$7.00

Canada, Mexico \$30.00

Other countries (overseas) \$39.00

http://bobhayden.com/index.php?main_page=product_info&cPath=12&products_id=103



This Editor purchased this product as a birthday gift for myself and received it in four (4) days in perfect condition. I am extremely pleased with the product. In the DVD, Zelkin explains how he was influenced by Malcom Furlow and his modeling style/approach. It was a worthy 20 minutes of entertainment and was Professionally prepared.

The book is exceptionally photographed and divided into five (5) Chapters. The first four chapters (pp 1-58) are a background of his history of modeling efforts. but the sixth and final chapter is subdivided even further to include such major topics as:

- Tutorials and equipment
- Supporting structure and track
- Terrain and Scenery
- Structures
- Building rolling stock
- Tools and Supplies, and
- Photographing the layout

That last chapter (76 pages) is both educational and entertaining. All-in-all, money well spent (...even his efforts and lessons learned while constructing a helix...).

"New on the Shelf"

Continued on page 9

Trails, Rails, & Tales

May/ June 2016

7

Here are two more which are new on my shelf - please let me know if you wish me to expound further in our next issue.

...Editor

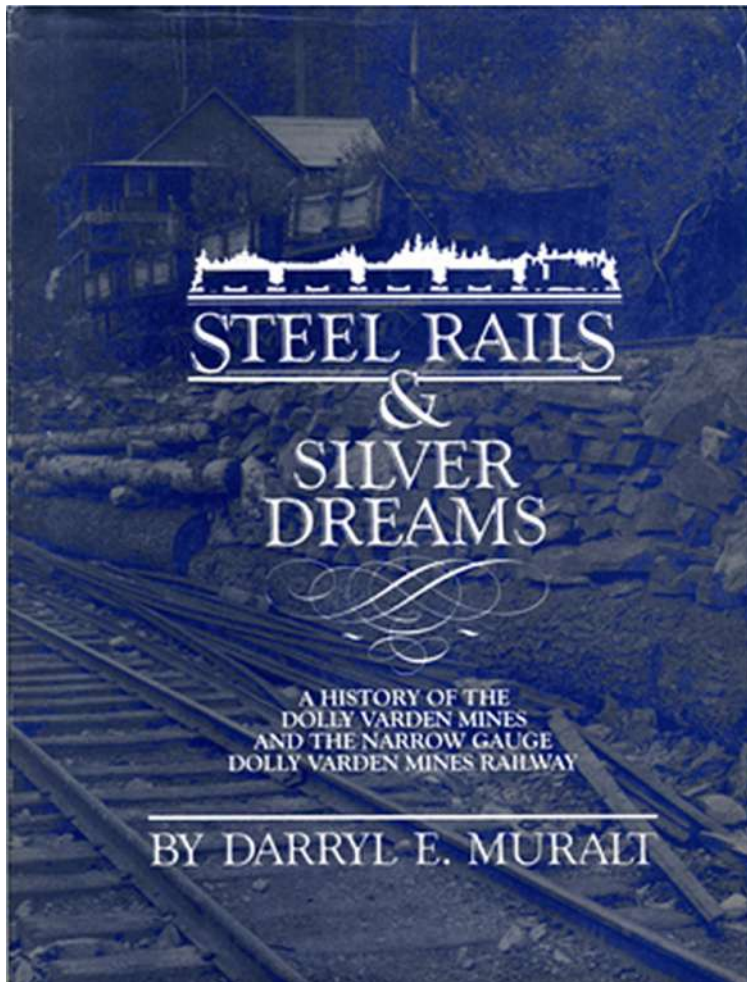
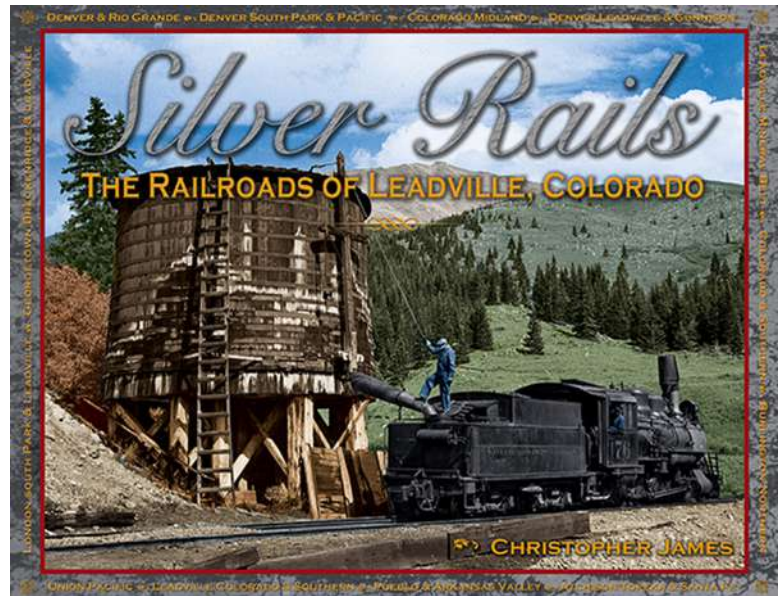
Silver Rails: The Railroads of Leadville, Colorado

Silver Rails: The Railroads of Leadville, Colorado
by Christopher James.

8-3/4" x 11-1/4", hard cover, 288 pages, color and b&w photos, maps. Price: \$59.95.

Silver Rails tells the story of four railroads, the Denver & Rio Grande, the Atchison, Topeka & Santa Fe, the Colorado Midland, and the Denver, South Park & Pacific, as they battled the mountains, weather, finances and each other to access the wealth that was pouring from Leadville's mines. This is also the story of the laborers, railroaders and empire builders who endured avalanches, fires, accidents, angry stockholders, financial ruin and even murder to build and operate the railroads that helped put the magic in the "Magic City" of Leadville.

http://bobhayden.com/index.php?main_page=product_info&products_id=101



Steel Rails & Silver Dreams

This is the story of the Dolly Varden Mine and the Dolly Varden Mines Railway, 18 miles of improbable narrow gauge iron reaching north from the little community of Alice Arm to this rich silver property, now a legend in the annals of mining in British Columbia. In the years between 1916 and 1922, the Dolly Varden Mine was both the brightest hope and the greatest disappointment of the mining industry of Northwest Canada.

http://bobhayden.com/index.php?main_page=product_info&products_id=27

Six Daring train robberies by Evan Andrews

submitted by Linda Harper

Almost as long as there have been trains, there have been train robberies. These dramatic stickups have become the stuff of legend thanks to dime novels and Hollywood westerns, but they also account some of the most fascinating—and lucrative—true crimes ever committed. From high profile capers by the likes of Jesse James and Butch Cassidy to a raid by a gang of Indian political dissidents, find out more about six of history's most audacious rail heists.

1. JESSE JAMES' IOWA TRAIN ROBBERY

Notorious outlaw Jesse James is best remembered as a bank robber, but he was also one of the first bandits to hold up a moving train. The earliest of these heists came on the evening of July 21, 1873, near Adair, Iowa. After gathering information on the train schedule, James and his gang loosened a section of track on the Chicago, Rock Island and Pacific Railway. As their target rounded a blind curve, the thieves used a rope to dislodge the track, causing the locomotive to derail and topple into a ditch. The crash killed the engineer and badly injured another man, but the rest of the cars lurched to a stop on the tracks.

Disguised behind white cloth masks, two of the robbers—most likely Jesse and his brother, Frank—boarded the train cars and sought out a safe belonging to the U.S. Express Company. The gang had been led to believe it would contain a large cache of gold bullion, but upon opening it they found only a meager \$2,000. Disappointed, the men resorted to robbing the stunned passengers of their money and valuables. Despite its modest haul, the Adair robbery shocked the public for its sheer boldness, and went a long way toward establishing Jesse James' reputation as a folk hero and celebrity criminal.



2. THE GREAT TRAIN ROBBERY OF 1963



The biggest train robbery in British history came in 1963, when a gang of 15 thieves stole more than \$7 million in banknotes—the equivalent of \$60.5 million today—from a Royal Mail train. In the early morning of August 8, the robbers rigged a false red signal light near a section of track called Sears Crossing. When the locomotive stopped at the light, more than a dozen men in ski masks appeared, beat the driver with a metal rod and uncoupled most of the cars. After forcing the driver to move the remaining cars to a rendezvous point a mile up the track, the thieves formed a human chain and quickly transferred 120 bags of money—most of them containing bills set to be removed from circulation—into three waiting vehicles.

After escaping the scene, the robbers hid out for several days in a nearby farmhouse, where they celebrated by playing Monopoly with their two-and-a-half tons of stolen cash. Spooked by the high police presence in the area, the men eventually divided the loot and split up. Police were later called to the scene, where they discovered heaps of evidence—including fingerprints on the gang's Monopoly board—that helped them track down the thieves. Twelve of the gang members were eventually arrested and sentenced to a total of 307 years in prison.

3. THE GREAT GOLD ROBBERY OF 1855

"Train Robberies"

Continued from page 9



Most train robberies are high profile crimes committed by armed bandits, but the Great Gold Robbery was the railway equivalent of a cat burglary. The heist was discovered in May 1855 in Paris, when authorities found that the gold in four lock boxes shipped from London had been partially replaced with lead shot. The boxes had been kept in double-locked safes and showed no signs of having been tampered with. At some point during the train journey between England and France, around 12,000 British pounds worth of gold bullion—the equivalent of some \$1.5 million in modern day currency—had simply vanished.

As police would later learn, the crime was a carefully planned inside job. Working with a stationmaster and a train guard, masterminds Edward Agar and William

Pierce had obtained wax imprints of the safe keys and painstakingly made copies. On the night of the robbery, the men disguised themselves as gentlemen and boarded the train in London carrying luggage filled with lead. Once in transit, Agar and Pierce stowed away in the baggage car and used their copied keys to open the safes. After switching the gold with their dummy lead weights, they resealed the boxes and disguised the loot in their luggage before exiting the train in Dover. The heist would have been the perfect crime, but Agar later confessed to authorities after he was arrested for a separate offense. Police rounded up his accomplices shortly thereafter.



4. KAKORI TRAIN ROBBERY

Most rail heists are inspired by blind greed, but many in India saw 1925's Kakori Train Robbery as an act of political protest. The holdup was the work of the Hindustan Republican Association, a band of

militant revolutionaries who sought to free India from British colonial rule. The HRA often resorted to robbery to fund their rebellion, and on August 9, 1925, they set their sights on a British train operating in what is now Uttar Pradesh.

As the train neared the town of Kakori, ten armed revolutionaries led by Ram Prasad Bismil overpowered the guards, hijacked the locomotive and brought all the cars to a screeching halt. While the rest of the men stood guard, four robbers made their way to the guard's van and used hammers to batter their way into a British safe filled with moneybags. All ten of the revolutionaries escaped without injury, but in the chaos of the heist one passenger was killed in an accidental shooting. The men eluded capture for over a month, but by September the train robbers had been arrested along with around 30 other revolutionaries. Bismil and three other men were later executed by hanging in 1927.

"Train Robberies"

Continued on page 11

Trails, Rails, & Tales

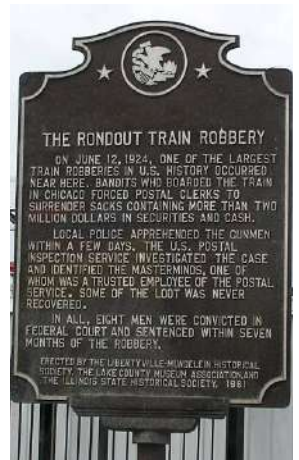
May/June 2016

10

5. THE RONDOUT TRAIN ROBBERY

The biggest rail heist in American history was the work of the "Newton Boys," a band of four Texas brothers who robbed at least 60 banks and six trains during their lucrative criminal careers. The caper came on the night of June 12, 1924. Working on a tip from a crooked postal inspector, two of the Newton brothers boarded a mail train on the Chicago, Milwaukee and St. Paul Railroad. After pulling guns on the engineer, the men forced the train to stop near Rondout, Illinois, where the rest of the gang waited with a small fleet of cars.

The thieves then threw bottles of noxious formaldehyde into the windows of the passenger cars, leaving the train's 17 armed mail clerks gasping for air. When the guards surrendered, the bandits made off with several mail sacks containing a staggering \$3 million in cash and bonds. The gang escaped in their cars, but in the confusion of the robbery an accomplice accidentally shot one of the Newton brothers several times. The thieves were later arrested after they tried to get medical assistance in Chicago.



6. THE WILCOX TRAIN ROBBERY

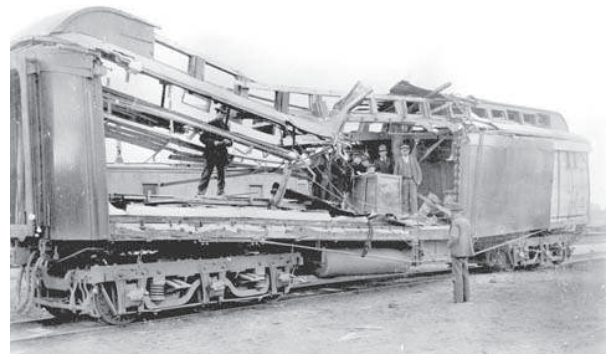


Five members of the posse that chased the Wilcox train robbers, 1899. American Heritage Center.

In the late 19th century, Robert LeRoy Parker—better known as "Butch Cassidy"—led a gang of train robbers who went by the colorful nickname "The Wild Bunch." This band of stickup men was responsible for several railway heists, but perhaps none was as famous as 1899's Wilcox Train Robbery in Wyoming. The raid began in the early morning of June 2, when several Wild Bunch members flagged down the first part of a two-section train operated by the Union Pacific Railroad. After the locomotive came to a halt, two masked men boarded it and ordered the engineer to cross a nearby bridge. As soon as the last car cleared the gap, the bandits dynamited

the bridge, stranding the approaching second train on the other side.

Having isolated the train's first section, the thieves ordered the clerks in the express and mail cars to open their doors. When the men refused, the robbers simply blew the doors off with sticks of dynamite, pushed aside the dazed inhabitants, and then used even more explosives to crack open a safe. In total, the gang made off with around \$30,000 in unsigned banknotes before disappearing into the mountains. Their



exploits as railway bandits would later help inspire the seminal 1903 silent film "The Great Train Robbery" and the later "Butch Cassidy"



looking back at our past events...

NMRA

meeting
April 5, 2016



Business Meeting was called to order at 7pm by Pamela Todd, Superintendent
Results from the Q&A Survey were discussed
NMRA "Merit Awards" were presented to Larry Gulick and Dean Lippencott



The meeting was adjourned at 7:15pm.

PART 1

Larry Gulick --- "Scenery Chapter 1 – Creating Scenery"

A video clinic showed Building from bare base on up to the landscaping process of your layout.



PART 2

Jim Marlett ~ "PART 2 ~ NATIONAL NARROW GAUGE CONVENTION"

Jim will be sharing a slide presentation of the Houston Convention -
Many Narrow Gauge layouts and layout tours.



The evening ended at 9pm

WICHITA AREA MODEL RAILROADERS

Monthly Luncheon Meeting

February 16, 2016

11:30am at Golden Corral

11006 East Kellogg Drive

Wichita, KS 67207-1922

(Just a short distance west of Greenwich Road on north side of street)

Our Hostess is "Bere"



Food, Fun, and Fellowship!

That's the reason for...Wichita Area Model Railroaders,
a fellowship of model railroaders in the Wichita, Kansas area.



*****Tuesday's Program*****

Model Railroading Paints
Flowquil and Polly Scale are gone!
replaced by
tru-color acetone based railroad colors
and hundreds of acrylic colors on the shelves
of Hobby Lobby and Michaels.

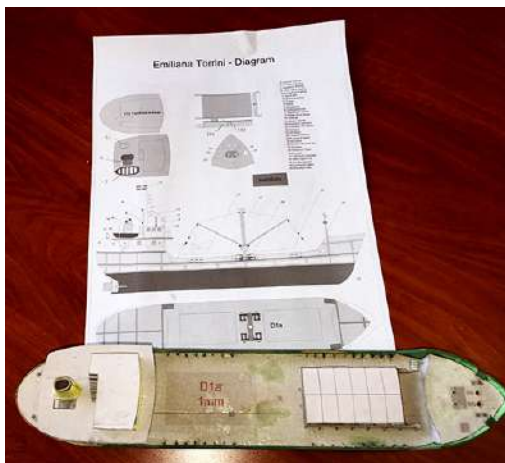
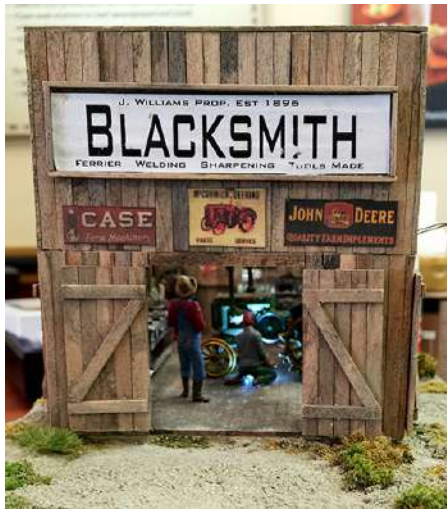


We'll discuss the items needed to airbrush acrylics
and guides for mixing colors that match
actual railroad colors!





Tom Smith shared his “BlackSmith” kit complete with simulated welding



Bob Neill shared his modeling with paper

tales from the road



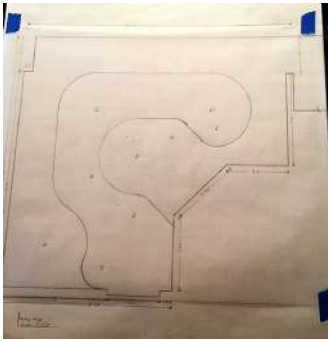
Hi Alan. Some pics I took at the museum during a long layover in DC. I caught Amtrak from Union Station up to Penn Station in Baltimore. Getting there was half the fun

Chuck Dugnonle



piques in progress --- upDates...

GENE BOWERS has begun his Layout
First with many, many iterations of pencil on paper drawings.

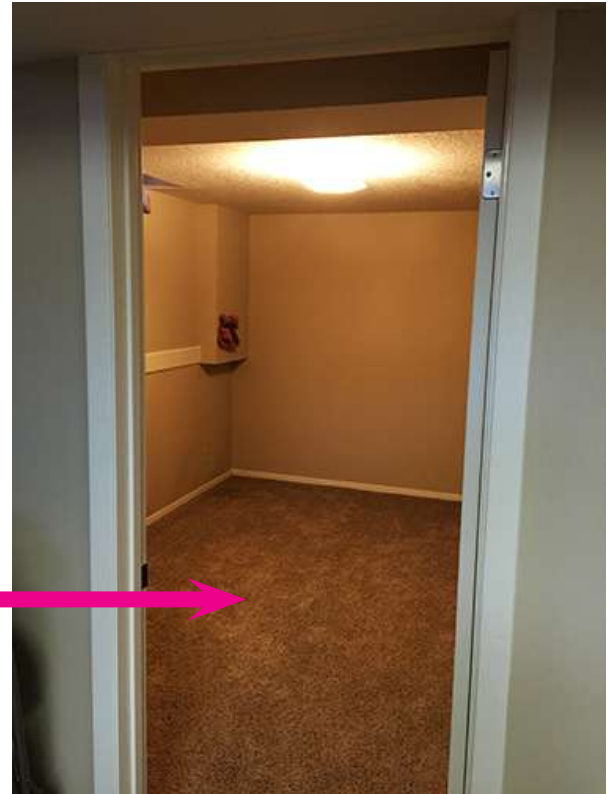


Then in January, 2016, action began in his approx 17' * 17' basement.

Nice and clean

then came the Plywood and the chalk-line

and the trips up to the garage and back began (thus keeping the majority of the sawdust out of the carpeted room.



...and the contour begins...





getting a feel of the plywood
Then framing the pieces/modules



well, the best laid plans...the room light switch needed to be moved to the other side of the wall



...phew, the first module/section in place!



...and the North wall is in place



This might need some explanation:

First you will see the outer door in both panoramic photos

The bottom panorama was taken from where the bright light appears in the top photo

So, we are looking South



Now, the lower photo was taken from the spot where the “work light” was in the upper photo

And now we are looking North

Page 17 was Day one

Page 18 was Day two

Page 19 was the end of the third day of construction in January, 2016.

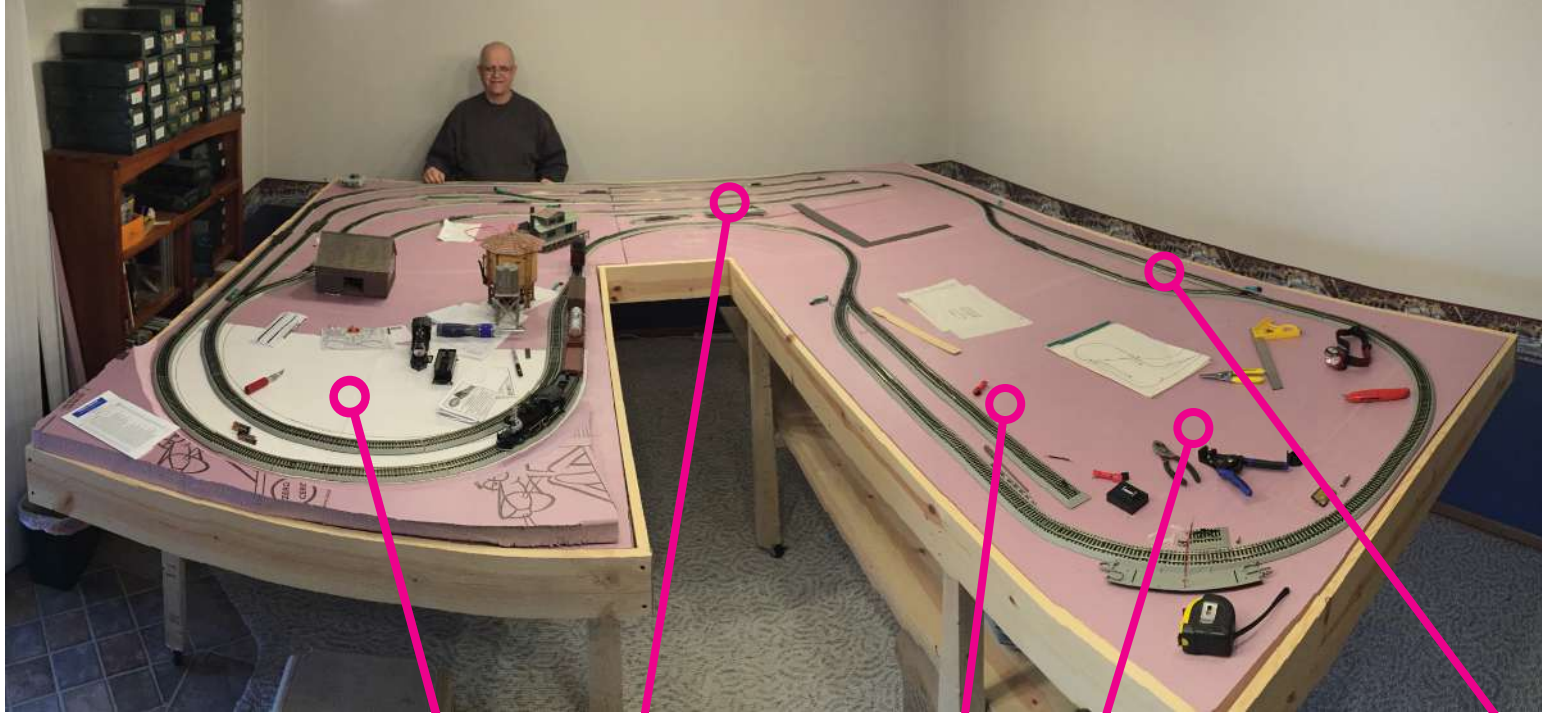
...here's hoping you'll be interested in further installments.



CHARLES “CHUCK” INGRIM has begun his Layout and this was my first visit back around January, 2015.

“INGRIM’S IMPIRE” - JANUARY 23, 2015

Oh, be still my heart...what marvelous progress Chuck has been making! Rumor had it, he was able to run his first train (initially using DC) between Thanksgiving and Christmas. Since that “Golden-Spike” celebration, he has been dropping leads in preparation for the conversion to DCC. His layout is approximately 9 feet wide (back by Chuck) - the leg to the left measures 8 feet and the leg to the right measures 10 feet. We (Mrs. Sharon, Charles, and myself) had a delightful visit that January morning. You will be kept informed as progress continues on his Empire (yes, *I know how to spell it, but was after the alliteration*).



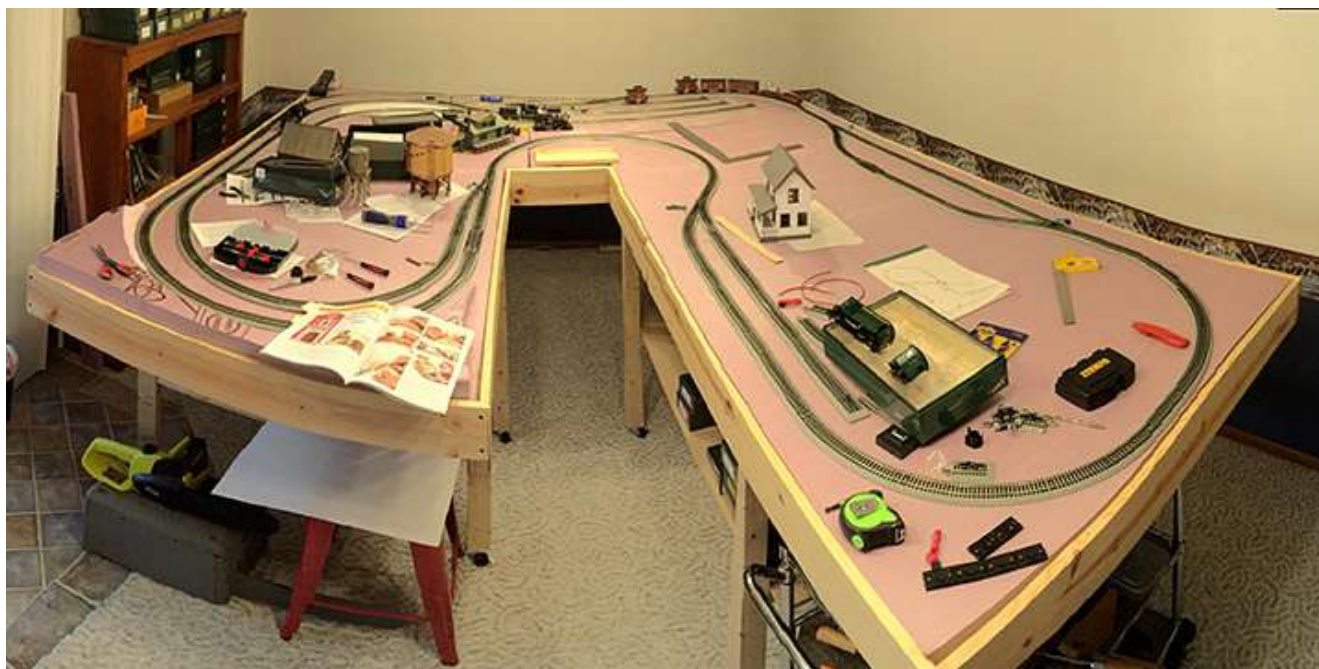
Mountains

Freight Yards

Station

Mexican Village

Stock Yards



November 24, 2015 - some mountain formations have begun as Charles was recovering from surgery.

February 10, 2016 - Charles, Larry Gulick, and Alan spent the morning troubleshooting the layout



that same morning not only was Charles amazed to see his locomotives running on DCC, but he was actually able to run them himself.

And, now you know why he was so elated - after several months of inability to get things moving under DCC.

Thanks Larry!!!



LARRY GULICK - plans to present a video clinic on **tree building techniques** in the very near future

A clinic on the construction of background trees. These are not the high quality foreground trees that Bob Hoover gave a clinic on in the past. These trees are for a background location where they won't be viewed closely. We never seem to have enough trees, train layouts have a way of making trees disappear. The first picture shows a Woodland Scenics plastic tree armature as it comes out of the package. The other picture shows a completed tree.



...calendar/coming attractions...



2016

May

- May 14, 2016 (Sat 9am-4pm) - 5th Annual Model Train and Railroad Memorabilia Show, Walsworth Community Center, 124 East Ritchie, Marceline, MO

June

- June 2-5, 2016 - Road to Omaha, 2016 Mid-Continent Regional Convention. Headquarters hotel will be Hilton Garden Inn. Train show will be at Ralston, Nebraska Arena, The Nebraska-Iowa Railroaders annual train show and swap meet details to follow soon and will be available on the Western Heritage Division website: <http://whd.mcor-nmra.org>

Henry Nipper Convention Chairman

- June 4 & 5, 2016 (Sat 9am-4pm, Sun 9am-3pm) - Center of the Nation Model Railroad Expo, Sunflower North Building, Kansas State - Fairgrounds, Hutchinson, KS

- June 21-26, 2016 the Santa Fe Railway Historical & Modeling Society (SFRH&MS) is hosting the national convention right here in Wichita. The convention attracts Santa Fe fans from all over the globe and is the premier event for education and modeling of the Santa Fe Railway. The main draw are the exquisite clinics and extra fare trips, likewise there will be model railroads on display, a vendor room full of great items (mostly, but not all Santa Fe), and a contest room. Also, on the Sunday afternoon, after the convention breaks up, there are usually layout tours. I have been put in charge to find local model railroads that would be willing to open their homes for just a few short hours on that Sunday afternoon. At the moment we have one model railroad open house. Please reach out to myself (Matt Martin) at MMartin104@gmail.com if you would be willing to share your layout to members and modelers from around the world. Your layout does NOT have to be Santa Fe either.

The convention hotel address:
9100 E Corporate Hills Dr Wichita, KS 67207

More details as they become available

<http://atsfrr.com/convention/2016%20Wichita/Index.htm>

July

- July 4-10 2016 - National Garden Railway Convention (San Francisco, CA)
- July 19 -24, 2016 - National Railway Historical Society (NRHS) National Convention, Denver, CO

August

- August 6, 2016 (Sat 10am-2:30pm) - Train Show & Swap Meet, Warrenton Elks Lodge, 1101 East Veterans Memorial Parkway, Warrenton, MO

September

- September 7 - 10, 2016 (Wednesday - Saturday) 36th National Narrow Gauge Convention (Augusta, Maine) Learn more at: <http://nngc2016.org/wp/>

October

- October 6 - 9, 2016 - Missouri Pacific Historical Society National Convention, Jefferson City, MO

November

December

2017

January

February

March

April

- April 6 - 8, 2017 (Thursday - Saturday) 31st Sn3 Symposium (St. Louis, MO)
Learn more at: <http://www.sn3-2017.com/>

May

June

July

- 2017 National Garden Railway Convention, Tulsa, OK, USA

August

- August 30th - September 2nd, 2017 (Wednesday - Saturday) 37th National Narrow Gauge Convention (Denver, CO) Learn more at: <http://www.37nngc.com/>

in future issues...



In our next issue we will feature articles from our Chisholm Trail Division which will include:

- Progress UpDate of those working toward/achieving the NMRA “Golden Spike”
- “Tips and Techniques” from many of us
- additional tools with “*double entendre*”
- *and please, Please, PLEASE send some photos and your story to be included in:*

“ONCE UPON A TIME” GUESS WHO...???

- and much, MUCH more...

We will hear from:

- Gene Bowers
- Tom Smith
- Larry Gulick
- Charles Dugnolle
- John Kraft
- ...further adventures of the
“Narrow Gaugers”
- and others stories