

Trails, Rails, & Tales



March-April 2020
Volume 6 • Number 2

The Official Newsletter of the *Chisholm Trail Division* of the **NMRA**

FROM THE DIRECTOR'S DESK

BY PHIL AYLWARD

A new year and new leadership. I hope you can give help when needed. I want to thank all of you that helped with the show as it was needed. We had a really good turn out. The ticket sales were up. About 1,012 people came thru the door. I hope we can have good show in 2021.

Thank You.

FROM THE SUPERINTENDENT'S DESK

BY DEAN LIPPINCOTT

Hello to my fellow model railroader enthusiasts,

I am excited about the upcoming year as your superintendent. We had our 1st board of directors meeting on February 8th and I am excited about the spirit I felt from the board. I experienced enthusiasm from each and every board member and the desire to lift the Chisholm Train Division of the NMRA to a new level. To succeed we will need participation and team work from all of our membership. If you are currently on a committee, I ask you to stay with that committee. If you do not desire to be on a particular committee ask for someone to take your place. If you leave a committee please move to another committee. If you do not want to do that, come to me with an idea of where you could be of better service to the club. PARTICIPATE and take part.

I feel our #1 goal this year is to increase membership. What you can do as club members is bring a friend to the meeting. Reach out to someone you may know who was once a member and encourage

TRAILS, RAILS, & TAILS

is published bi-monthly.

It is sent to members of the
Chisholm Trail Division of
NMRA

DIRECTOR

Philip Aylward

aylward1@cox.net

SUPERINTENDENT

Dean Lippincott

dean.lippincott@gmail.com

ASSISTANT SUPERINTENDENT

Ron Werak

rwerak@dosks.com

PAST SUPERINTENDENT

Rob Neises

robby_nmra@yahoo.com

PAYMASTER/TREASURER

Gene Bowers

gene9366@icloud.com

CLERK/SECRETARY

Randy Stucky

rita.stucky@wesleymc.com

WEBMASTER

[http://ctd-mcor-nmra.tripod.com/
ctd-mcor-nmra.html](http://ctd-mcor-nmra.tripod.com/ctd-mcor-nmra.html)

Rob Neises

them to come to a meeting with you. If someone new shows up at one of our meetings, extend a hand of friendship, introduce them to other members. **MAKE THEM FEEL WELCOME!**

Our #2 goal is to step up and make the meetings more exciting. We will be planning more interesting and informative programs at the meetings. Assistant Superintendent Ron Werak and the Program Committee are working very hard on this and I am confident that they will do a great job.

To all of you, the club is as good and exciting as you want to make it. It takes teamwork and enthusiasm. I will do my part to lead the charge, but I will need support from each and every one of you. Thank you to all for your support. Looking forward to seeing you all at the next meeting.

–Dean



Dean and his grandson. More on this in the next Trails, Rails, & Tales.

FROM THE EDITOR'S DESK

BY JIM MARLETT

Bob Neill sent a puzzle for publication in TR&T. At first I thought it had nothing to do with model railroading. But after thinking about it a little more, I realized that it has quite a bit to do with our hobby. Here is what Bob sent:

While roaming around I saw this written on a blackboard:

What has four letters

Sometimes has nine letters

Never has five letters

The answer will appear elsewhere in this newsletter. But why I think it applies to us is that model railroading seems to be an endless process of solving puzzles. We try to figure out what the prototype does or did and why. We struggle to get our layouts to fit the space we have available. Those kits we put together are a three dimensional puzzle and sometimes the instructions are so obscure that even they are a puzzle. We create our own puzzle pieces for scratch built structures and rolling stock. And then there is what many consider the ultimate puzzle – operations. Regardless of where we are in this hobby, we always seem to be working on puzzles.

Sn3 modeler Bill Robinson dropped by the other day. One of the topics we discussed was how having an outside opinion can open up new ways of resolving problems when we get stuck. This has happened to me many times and I'm sure it has happened to you. For instance, the narrow gauge railroads that are the inspiration for my model railroad used both six foot and six-and-a-half foot ties. I had both and I really couldn't think of an easy way to combine them when gluing them down. Bill pointed out that the short ties tended to be older and when they wore out, they were replaced by the longer ones. He stained his short ties to look old and faded, and his longer ties are stained a darker, more recently creosoted color. When putting them in the jig, that device we hand layers build to save time, just leave out a few random spaces. Then when gluing them down, slip a few of the "other" ties in the blank spaces by hand. What a great idea! I lamented that I already had a lot of the upper layer done and he pointed out that it would actually be a better feature on the lower level where you would look down at the track. So the lesson is we shouldn't be afraid to let other people see our layouts. New eyes on our projects can be a real puzzle solver.

If you haven't already worked out the words on the chalkboard that Bob Neill presented to us, look on the last page of this newsletter.

And on the right is a picture of the latest progress on my own personal puzzle.



RANDY STUCKY RECEIVES LAROE AWARD



Previous recipients Pam MacPhail and Larry Gulick presented the John D. LaRoe Memorial Award to Randy Stucky at the last Chisholm Trail Division meeting. The award is to honor the recipient's service to the Chisholm Trail Division and the hobby in general. This award commemorates the late John D. LaRoe for his many years of outstanding service to the Division.

THE WICHITA TRAIN SHOW & SWAP MEET

Another successful train show is in the books. Advertised as “The Best Train Show in Wichita,” it lived up to its billing once again. I think the committee and the Chisholm Trail members who helped out deserve our appreciation.

An important aspect of the show is the modeling contest. The winners are listed below. I regret that something mysterious happened and most of the pictures I shot of them just disappeared.

TRAIN SHOW CONTEST WINNERS

BY RANDY STUCKY

Thanks to those who came to the Best Train Show in Wichita on February 1&2.

Thanks to those who entered our model contest. We had 31 entries in various categories. Congrats to the winners in each category.

Mark your calendars for February 6&7, 2021 for the next year’s show.

Best in Show – Pam MacPhail

Steam Engines – No entries

Diesel Engines

First – Lloyd Hurst

Second – Tim Peters

Passenger Cars – No entries

Freight Cars

First – Terry Ross

Second – Wayne Schlueter

Third – Jim Hogben

Caboose

First – Leroy Schmidt

Second – Leroy Schmidt

Non-Revenue Cars

First – Terry Ross

Tongue in Cheek

First – Leroy Schmidt

Second – Randy Stucky

Third – Randy Stucky

Structures

First – Pam MacPhail

Second – Tim Peters

Third – Wayne Schlueter

Diorama

First – Pam MacPhail

Second – Dean Lippincott

Third – Alan Meinholt

Photos, Prototype

First – Tim Peters

Second – Wayne Schlueter

Third – Wayne Schlueter

Photos, Prototype, Youth – No entries

Favorite Train

First – Rob Neises

Second – Randy Stucky

Third – Randy Stucky

FIRST PLACE CONTEST WINNERS

PHOTOS BY STEEN MORTENSEN & ALAN AAGAARD



Pam MacPhail's First Place Diorama was also Best of Show.



Diesel Engine – Lloyd Hurst



Freight Cars – Terry Ross



Caboose – Leroy Schmidt



Non-Revenue Cars – Terry Ross



Tongue in Cheek – Leroy Schmidt



Structures – Pam MacPhail



Photos, Prototype – Tim Peters



Favorite Train – Rob Neises

AROUND THE SHOW

PHOTOS BY ALAN AAGAARD & JIM MARLETT



Above: Jim Hogben presenting his clinic, "Scenery Made Easy."



Right: Steve Weidner presenting his clinic, "Painting Figures."

Below: A panoramic view of the layout room.





Plenty of vendors were on hand.



Chisholm Trail Division's NMRA booth.



Modular N-scale layout from Western Kansas.



An N-scale modular layout in a "dog bone" style.



Mark Fisher and Steve Weidner brought their always popular On30 layout.



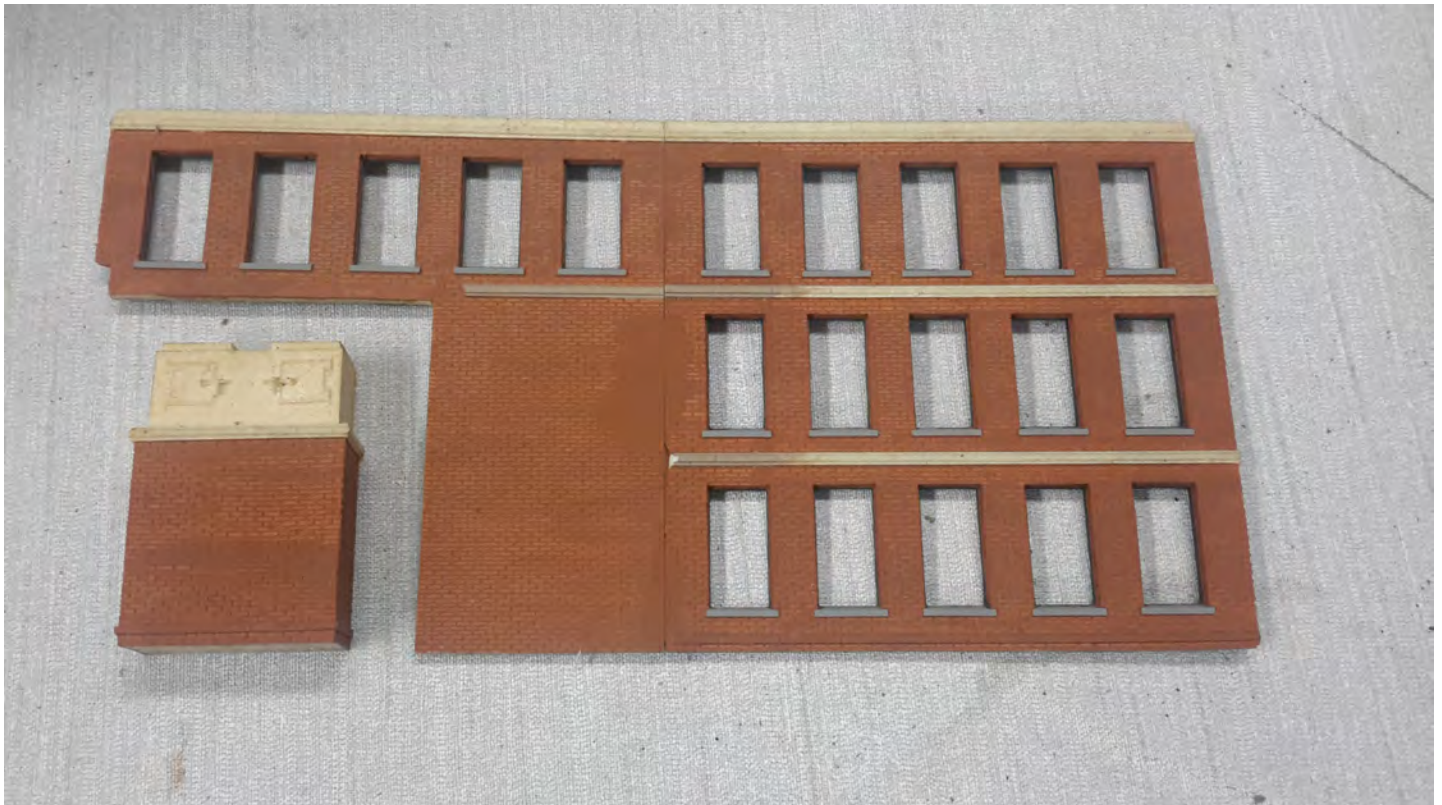
Logging detail on the On30 layout.

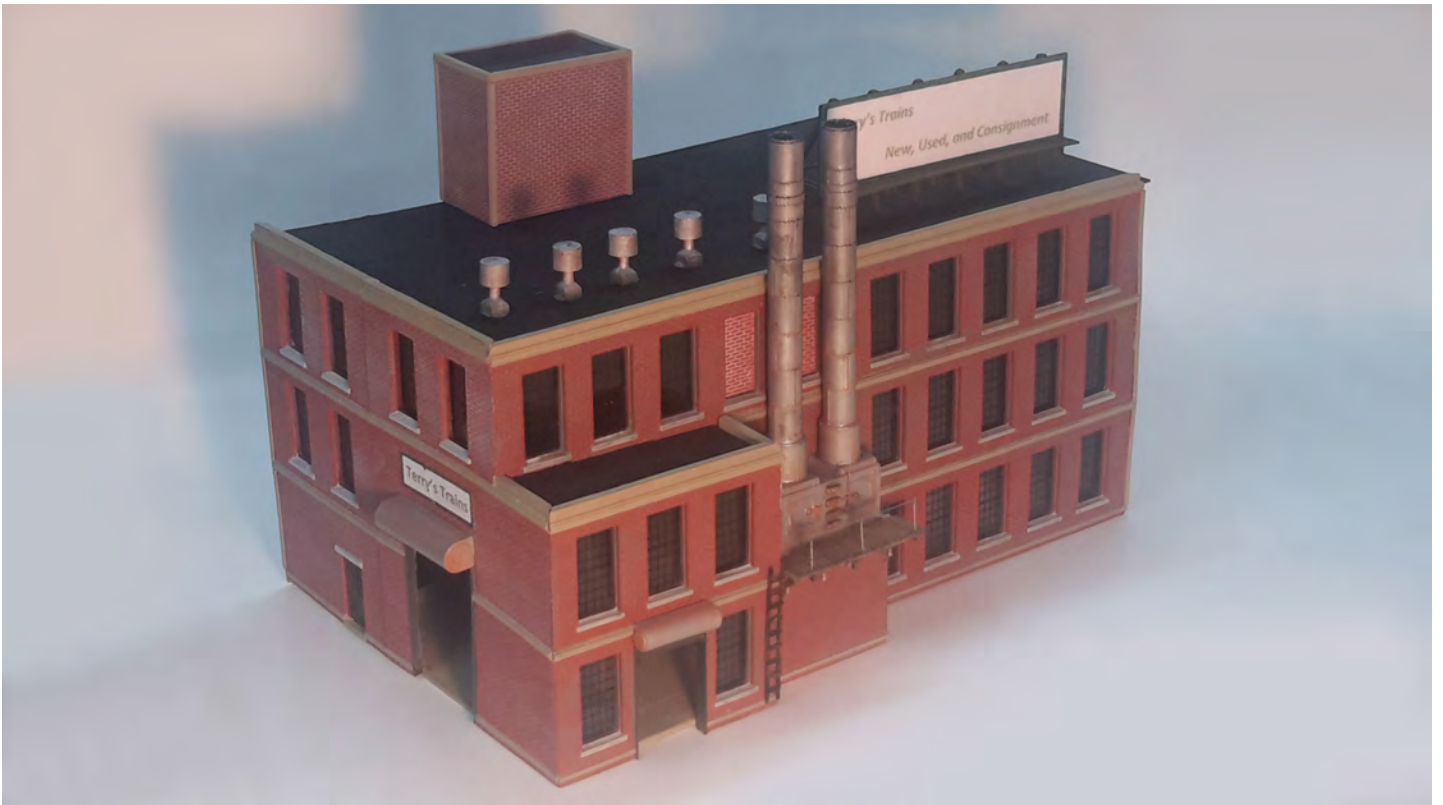
A KIT BASHING PROJECT

BY LARRY GULICK

I purchased this building kit some time in the eighties. The picture on the box really looked good. After opening the kit and examining the parts I realized the assembled structure would be way too small. I moved the walls around to create a more realistic structure, painted it colors that looked good at the time. I couldn't find a place for the building on the layout. Years went by, layouts changed, and eventually scales changed, and I no longer had any need for the building. About six weeks ago I rediscovered the kit, removed the windows, repainted it, and reassembled it. I wished I knew what glue was used 30 years ago because it sure held good.

It's been said the Egyptian's took 20 years to build a pyramid and they were working on something a lot bigger than me. But there was only one of me and there were lots of them!





CALENDAR OF EVENTS

INCLUDES NON-NMRA EVENTS

RECURRING EVENTS

Chisholm Trail Division of NMRA Monthly

Meeting. Every first Tuesday of the month. Gather at 6:45PM. Olivet Baptist Church, 3440 W. 13th St., Wichita, KS (13th & High) <http://ctd-mcor-nmra.tripod.com/ctd-mcor-nmra.html>

Kansas Central Division of NMRA. Every second Saturday of even numbered months at 1:00PM. Locations vary. Contact information is here: http://www.mcor-nmra.org/Divisions/Kansas_Central_Division/

Kansas Central Model Railroaders Business Meeting. (Not the same as Kansas Central Division of NMRA) Every second Saturday from 11:00AM-Noon. 16 East 3rd Ave, Hutchinson, KS <http://www.kansascentralmodelrailroaders.org>

Wichita Area Model Railroaders Luncheon. Every second Thursday at 11:30AM. Spears Restaurant and Pie Shop, 4323W. Maple, Wichita, KS

MARCH 2020

March 7-8 – Rocky Mountain Train Show.

Denver Mart, 451 East 58th Ave, Denver, CO. <https://rockymountaintrainshow.com/Default.aspx>

March 14-15 – Garden City Train Show.

Exhibition Building, Finney County Fairgrounds, 409 Lake Ave, Garden City, KS. <https://www.visitgck.com/event/2020-garden-city-model-train-show/>

March 21 – Arkansas City Train Show. Agri-Business Building, 712 W. Washington. <https://www.facebook.com/events/712-washington-ave-arkansas-city-ks/arkansas-city-train-show/1114125618672189/>

March 21 – Ozarks Model Railroad

Association Spring Train Show. Oasis Convention Center, 2546 N. Glenstone Ave, Springfield, MO. <http://www.omraspringfield.org/train-shows.html>

March 28-29 – Free-Mo Event. Thayer County Event Center, Dreshler, NE. Sponsored by Spring Creek Model Trains. <https://www.springcreekmodeltrains.com/>

APRIL 2020

April 4 – Turkey Creek Train Show. Cancelled

April 4 – Greater Tulsa Area Train Show.

Bixby Community Center, 211 N Cabaniss Ave, Bixby, OK. <https://www.ttos-sooner.org/event/greater-tulsa-area-train-show/>

MAY 2020

May 2-3 – Herington Railroad Days & Kansas Central Division NMRA Meet. Herrington Community Building, 810 South Broadway, Herington, KS. <https://www.facebook.com/HeringtonRailroadDays/>

May 22-23 – Katy Days Festival, Cherry Valley Model Railroad Club Train Show and Swap Meet. Arvon Phillips Recreation Center, Forest Park, Parsons, KS. vendors email greatamericantrains@hotmail.com

CALENDAR OF EVENTS (CONTINUED)

INCLUDES NON-NMRA EVENTS

JUNE 2020

June 6-7 – Center of the Nation Model

Railroad Expo. Kansas State Fairgrounds,
Pride of Kansas Building, Hutchinson, KS.

<http://>

www.kansascentralmodelrailroaders.org/train-show.html

SEPTEMBER 2020

September 2-5 – 40th National Narrow Gauge

Convention. Embassy Suites by Hilton, 2
Convention Center Plaza, Saint Charles (St.
Louis), MO. <https://40nngc.com/>

(Editor's note: It's going to be very busy in the
Gateway City this year!)

JULY 2020

July 12-18 – NMRA National Convention. The

Hilton St. Louis at the Ballpark, 1 S.

Broadway, St. Louis, MO.

<http://www.gateway2020.org/>

July 31-August 1 – Railroad Prototype

Modeler's Meet. Gateway Convention

Center, One Gateway Drive, Collinsville, IL.

(Across the river from St. Louis, MO) <http://>

www.icgdecals.com/stlrpm/

**Please send me any events or
meetings that you think should be
included on this calendar.**

Jim Marlett

jmarlett@cox.net

WORDS ON A CHALKBOARD

BY BOB NEILL

For those thinking the blackboard was asking a question, no, it was making a statement. As you see there is no punctuation. It would be clearer if the sentences started with something like: 'The word " " and with a period'. Do we ever speed read and jump to a wrong conclusion? I know that I often do not use enough words, but I know what I am thinking.

The word “what” has four letters.

The word “sometimes” has nine letters.

The word “never” has five letters.