



The

Main Line

April 2022



National Model Railroad Association

Mid-Continent Region

The Monthly publication of the



Western Kansas Division



On The Cover:

After a day of hosting the annual Spring Train Show in Garden City, KS. Members of the **Boot Hill Model Railroad Club** and friends share a meal on a Saturday night.

from the
**Model Railroad
Hobbyist** *Store*

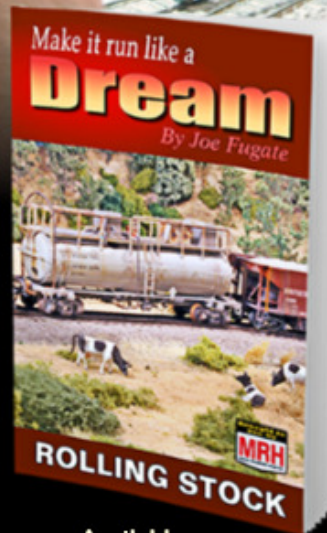


Available now

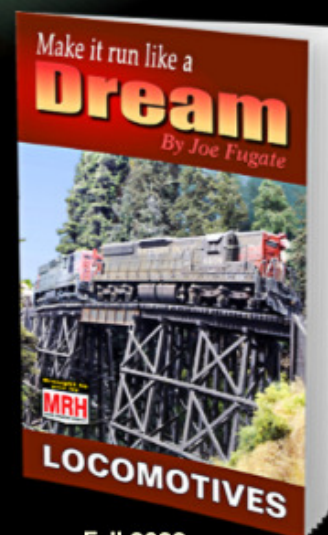
★★★★★ 5/5

"These books are
remarkable and very
well done."

- James S.



Available now



Fall 2022



Get now and save - special discount pricing

PAPERBACK BOOKS: FREE SHIPPING US - 50% OFF SHIPPING FOREIGN

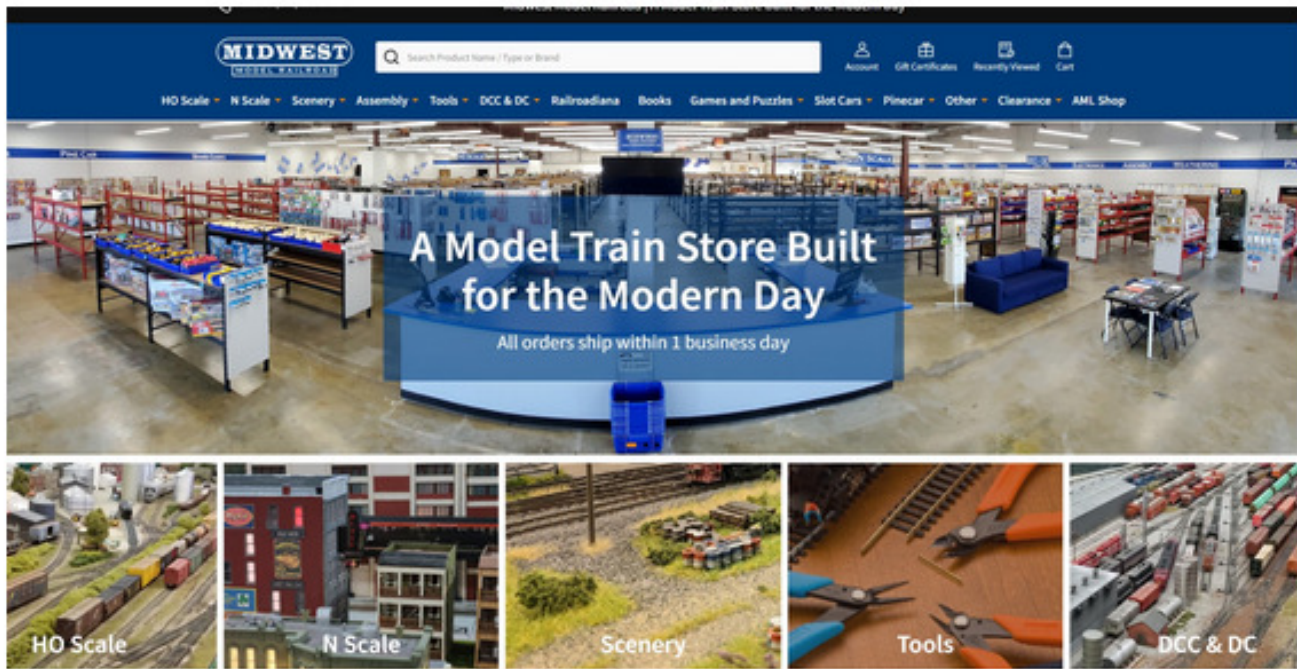
eBook download
or
Paperback book

Make it run like a
Dream

Check out their new book series and read the latest issue of **Model Railroad Hobbyist**, just click on the link:

<https://model-railroad-hobbyist.com/>

New Website Has Arrived!



In 2011, Midwest Model Railroad launched it's first website with the goal of making Model Railroading more financially accessible to all, while still bringing that small business, local hobby shop customer service that modelers expect.

The newest version of our attempts has gone live this morning. Not a whole lot on the surface has changed but you will notice a much more powerful search, menus will look sleeker, and modern, and, most of all, easier to instantly navigate.

Please note the following: Your username will be the email address you used to sign up for an account with us. We are requiring all customers update their passwords.

Thank you, and we will talk again soon!

Midwest Model Railroad Staff

Passwords are not allowed to be transferred so you will need to use the forgot password link the first time you log in.

Visit this link to reset your password: [Password Reset](#)

Visit the Website: <https://midwestmodelrr.com/>



Robert Simmons
834 subscribers

CUSTOMIZE CHANNEL

MANAGE VIDEOS

HOME

VIDEOS

PLAYLISTS

COMMUNITY

CHANNELS

ABOUT



Uploads ▶ PLAY ALL



Pikes Peak N'gineers T-Trak
71 views • 7 days ago



Ops On The WKR N-scale Layout - Train 1 - Move 1
172 views • 2 weeks ago



Grain Train On The WKR N-scale Layout
337 views • 3 weeks ago



Molly And The Pirate
37 views • 3 weeks ago



BNSF Yard Switching 2/10/22
51 views • 1 month ago



Lap Two Around the WKR N-scale Layout...
298 views • 1 month ago

The **Western Kansas Division** YouTube page in March has:

25

NEW SUBSCRIBERS

3,285

TOTAL VIEWS

7,532

MINUTES WATCHED



Lap Around the WKR N-scale Layout
1.3K views • 1 month ago

<https://www.youtube.com/watch?v=Gwv-TGdxtus>

https://www.youtube.com/watch?v=zdD_84_XVrg



Grain Train On The WKR N-scale Layout



Pikes Peak N'gineers T-Trak

<https://www.youtube.com/watch?v=cYfiL3ILcDw>

Visit the **YouTube** page today: https://www.youtube.com/channel/UC9EPv8cQ04rRGAYts-734jw?view_as=subscriber

9 All-New Layouts



Model Railroader is back with the 2022 edition of the popular **Great Model Railroads** special issue! Covering techniques such as operation, control, track planning, and scenery, this must-have issue is essential for all model railroaders. Don't miss out on how-to tips, detailed track plans, realistic scenic effects, and much more!

You'll get 9 all-new layouts in HO, N, and HOn3 scales including articles about:

- Progress continues on the Nickel Plate, by Tony Koester.
- A freelanced gem in N scale, featuring Tyler Whitcomb's N scale Tenino Western Railroad.
- Capturing the Commonwealth in O scale.
- Lone Star State railroads on a modern HO layout.
- And more!

Hurry – order this popular annual issue today!

Click the link: <https://kalmbachhobbystore.com>



Visit To “Adamsville”



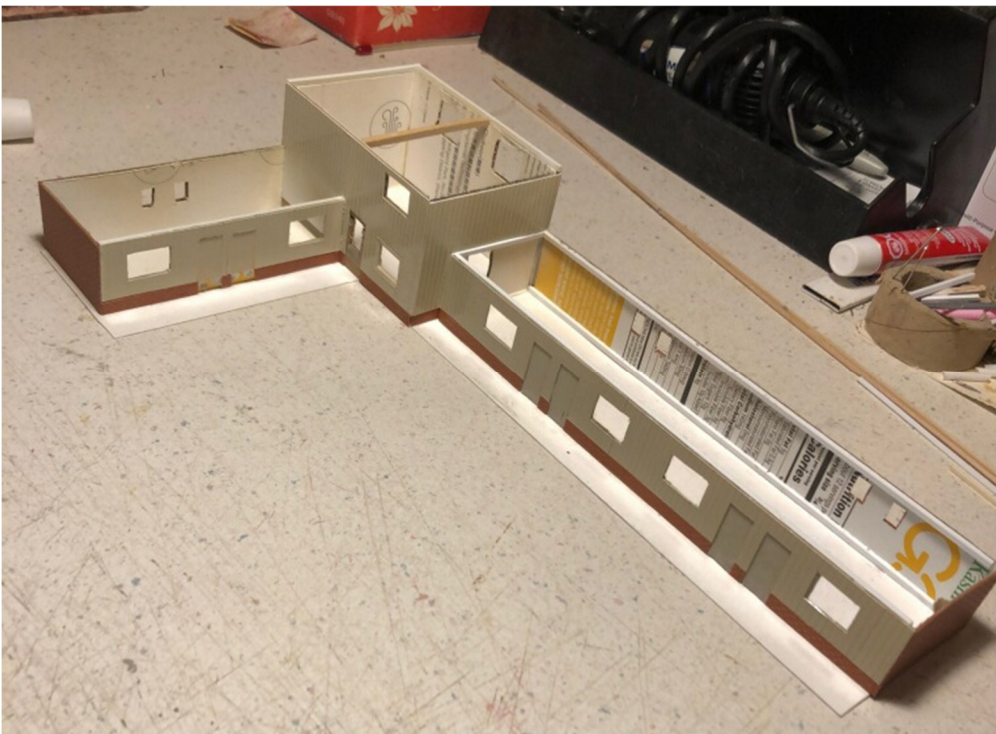
Jim Adams, member of the Boot Hill Model Railroad Club, and Mayor of Adamsville (left) displayed his home HO-scale layout at the Garden City train Show in March.

Jim has embarked on an expansion of the layout.
(below)



Jim describes this new section of the layout as “freelanced” and includes a high school style combination football field and outdoor track. As in most places, there are also homes around the area that get a free view of the games.

Jim enjoys creating the scenery the best aspect of model railroading and scratch-builds all the structures.



(Left) The construction of the new motel.

Visit To “Adamsville”



(Above) A view from the side of the section with the football field behind the duplex.



(Above) A better view of the structures at the other end of the field.

(Below) A look at the back side of the new motel.





NRail has provided the voice of N Scale model railroading for over 45 years. Starting as **NTRAK**, it created the first national modular standard, provided the vehicle for N Scale to grow to the second most popular scale in North America, was the birthplace of **T-TRAK** and today is the home of N Scale model railroading. **We welcome all N scalers**

Membership in NRail includes:

- One year of the Newsletter (6 issues).
- Monthly ZoomTRAK live broadcasts.
- Support of the National T-TRAK Layout.
- Support of NTRAK layouts at major train shows.
- Access to the Members Only section of NRail.org (including over 270 issues of the Newsletter).
- Discount on merchandise in the NRail store.



T-Trak layout on display at the Boot Hill Model Railroad Club Train Show in Garden City, Kansas.

Videos on The **NRail YouTube** Channel

- [ZoomTRAK Archive](#)
 - [Clubs](#)
 - [Free-moN](#)
 - [NTRAK](#)
 - [T-TRAK](#)
- [Instructional Library](#)

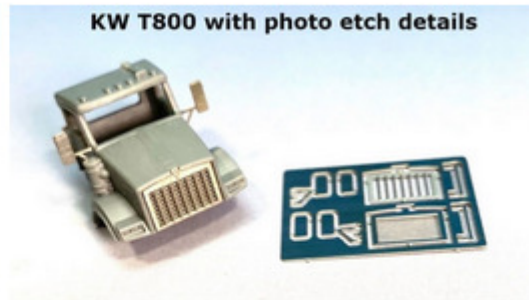
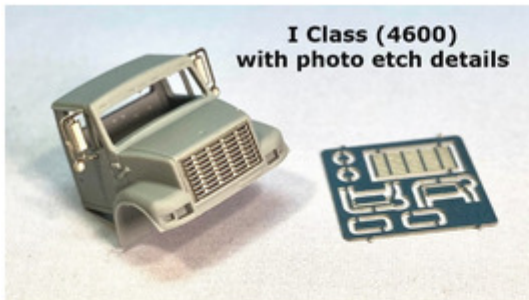
Click the link to check N-Rail out: <https://nrail.org/>

SHOWCASE

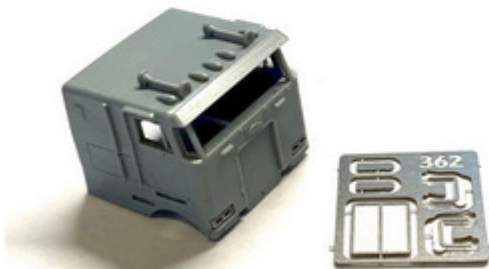
Miniatures

N Scale Vehicles Get an Update

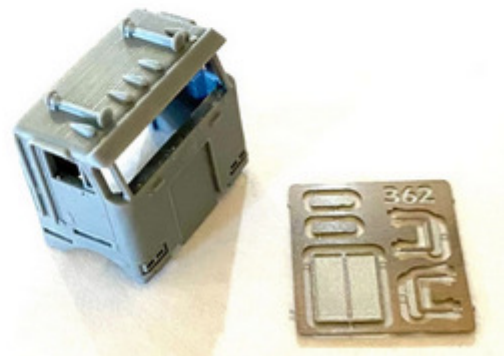
We hope you will like the update to some of our N Scale vehicles. We are in the process of converting all the cabs in our kits to higher detailed versions that take advantage of more precisely engineered methods (like etched grilles and mirrors). Photo-Etched stainless-steel details can make painting your cab a much easier task which allows for a better-quality finished product.



Peterbilt 362 COE Cab (OTR Version)



Peterbilt 362 Cab (Day Cab Version)



Check out their website: <https://www.showcaseminatures.net/>



your portal to more fun in scale model railroading



[Home](#) [In The News](#) [Education](#) [Standards](#) [Regions](#) [Conventions](#) [Calendar](#) [Membership](#) [Contact](#)

**The Next National Convention:
Gateway 2022 in St. Louis, MO**

The 2022 NMRA annual convention is August 7-13.

Gateway 2022
ST. LOUIS NMRA

**GETTING
STARTED**
IN MODEL RAILROADING

**BECOME A MEMBER
JOIN THE NMRA TODAY!**

DONATE TODAY
EVERY GIFT HELPS



Going somewhere? Take us with you.

The NMRA Magazine is now Digital
Read Online or Offline
Anytime. Anywhere.

Digital
nmra 
magazine
Arriving April 1st!

Visit the NMRA website: <https://www.nmra.org/>

Garden City Train Show Report

On March 12th & 13th, the **Boot Hill Model Railroad Club** hosted their annual Spring Train Show in Garden City, Kansas. Unfortunately, I spent way too much time talking with friends and therefore got just a few layouts.

Pikes Peak N'Gineers – Colorado Springs, Colorado



The pikes Peak N'Gineers displayed their N-scale, T-Trak layout. T-Trak modules are usually 1-foot wide, by 2-feet in length and use banquet tables for set-up.



Check out their website: <http://www.ppngineers.org>

Garden City Train Show Report

FreeMo – HO scale



Coming from all over, several members converged on Garden City with individual FreeMo standard modules. All displayed exceptional craftsmanship in track work and scenery.



Check out their website: <http://www.free-mo.org/>

Garden City Train Show Report



“Adamsville” by Jim Adams, Boot Hill Club member – HO scale



Jim Adams displayed his home layout that features an incredible number of details.



Garden City Train Show Report



One of the best aspects of Train Shows (at least for me) is visiting with old friends and making new ones. I had missed all the train shows last year and the comradery that goes with it. Hopefully we can get back to making the show circuit.

Gateway 2022

Gateway Rail Productions LLC



Sun, August 07, 2022 @ 08:00 AM — Sat, August 13, 2022 @ 06:00 PM (CDT)



The 2022 NMRA annual convention is August 7-13. The event is being held at the St Louis, Marriott Grand Hotel. Registrants will receive one free self-driving tour.

Registration: **Open**

Event Dates



[Save to my calendar](#)

Registration Closes

AUGUST 07, 2022 @ 6:00 PM

Marriott Grand, St Louis, MO



Address

Marriott Grand, St Louis
800 Washington Ave, St Louis, MO
Saint Louis, MO USA
Room Rate \$149 per night

Register today! Visit the website: <https://www.eventsquid.com>



We exist to preserve the history and chronicle the operation of the Burlington Northern Railroad and its successors, as well as the MRL. For information on historical societies for railroads that merged to become the BN or BNSF,



New Membership

- Membership in the Friends of the Burlington Northern Railroad is for one full year.
- Multiple year memberships are permitted and even encouraged!
- Regular members get 4 copies of *The BN Expediter* and can buy our annual BN calendar for \$2 off the regular price.
- Sustaining members get 4 copies of *The BN Expediter*, are acknowledged by name in every issue of *The BN Expediter*, and get our annual BN calendar free (if joined by December 31st – after the 31st we'll send one as long as our supply lasts).
- Youth members (16 years old and under) get 4 copies of *The BN Expediter* and can buy our annual BN calendar for \$2 off the regular price.



Visit the website: <https://fobnr.org/>



The principal purpose of the **Operations Special Interest Group (OPSIG)** is to discuss, develop and disseminate ways of operating model railroads to realistically emulate practices of the prototype.

This includes sharing information on various methods of generating, moving and controlling traffic to heighten the feeling that our models are an active and integral part of the national rail transportation network, serving shippers and consignees throughout the nation.

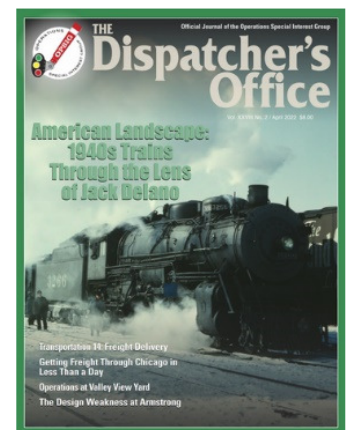
We also discuss and communicate information about the methods and procedures used by the real railroads and ways of most practically and realistically adapting them to the model world. So, if you like to operate the railroad you've created, this is a place to learn more and find others with similar interests.



Check out their **website** page: <https://www.opsig.org/>

Visit their **Face Book** page: <https://www.facebook.com/OperationsSIG>

We publish a quarterly magazine, [*The Dispatcher's Office*](#), which in addition to containing articles and information on railroad operations (both prototype and model), contains listings of operating layouts, sessions, and events that members are invited to attend. [Back issues are available.](#)



In addition, the OPSIG web site serves as a clearinghouse for publicizing [regional operating events and meetings](#), where layouts are open for guest operations. We also have a [Facebook page](#) and send out the *Second Section* email newsletter on a regular basis.



WHITERIVER PRODUCTIONS

Head to the website and subscribe today...

<https://rrmodelcraftsman.com/>

■ [Railroad Model Craftsman Magazine - April 2022](#)

The Lost Dutchman Lines

W. DAVID DOIRON - This large HO scale layout built for operations combines prototype elements of the Southern Pacific in Arizona with a freelanced short line.

Scratchbuild a Yard Shanty in O

WAYNE SLAUGHTER - With dimensions estimated from available photographs, this structure is based on a Boston & Maine prototype at Mechanicville, N.Y.

Modeling Illecillewaet Dam

PATRICK LAWSON - This HO scale model is based on an actual hydroelectric dam that once served the area around Revelstoke in British Columbia.

Burlington Northern Trough Train

DOUG GEIGER - Made from detailed 3D-printed components, this unique prototype served in dedicated coal service on Burlington Northern in the 1990s.

Operations on the Yosemite Valley

JACK BURGESS - It's August 1939, and this California short line has trains to move based on actual period timetables, using "fast clocks" and switch lists.

Editor's Musings

In March I was able to take in a few hours of fun at the Garden City Train Show. For me, the best part was visiting with friends I had not seen in over a year (which is exactly why the show report is so skimpy). For the first time in a long while, it seemed that most of us are getting back to “normal”. For health reasons, I was not able to display the WKR Layout and its recent upgrades, but there is always next year.

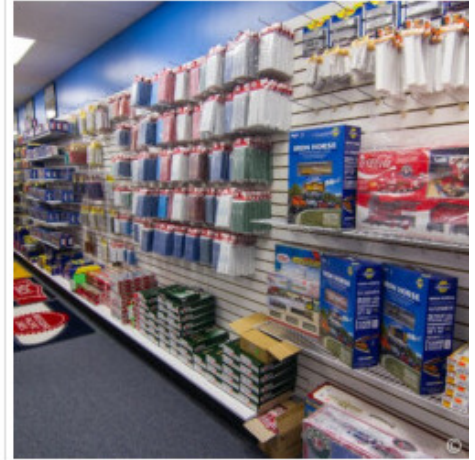
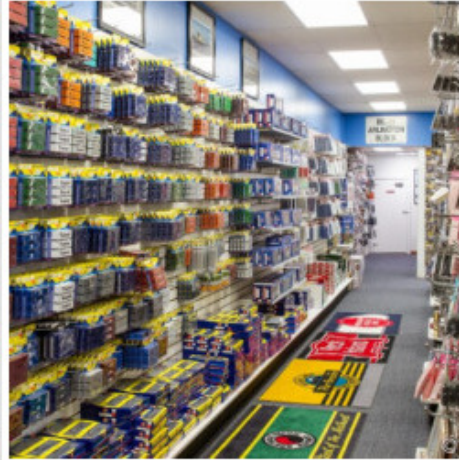
I did get to visit with Jim Adams of the **Boot Hill Model Railroad Club** and discovered that Jim and I both have a passion for scenery. I hope to feature more of Jim’s work as he is an excellent scratch-builder and is currently working on an expansion of his current home layout.

I have an appointment for the LTV (Layout Transport Vehicle) in early May for some minor repairs and upgrades so if the opportunity arises, the WKR will be ready to travel.

When you look through the Date Book, it’s good to see there is a growing list of Train Shows back on the schedule as more and more people are getting out again.



The Western Kansas Division has a **MeWe** page, check it out here:
<https://mewe.com/p/westernkansasdivisionnmra>



I, David Zucker, along with my wife Debby, started our hobby store business in 2000. It has been a lifelong dream to own my own model railroad hobby store.

We have grown from a 5' x 10' enclosed trailer to a store (which I never thought we could fill) and website.

We were excited when our son Jeff and his family moved back to Deshler and joined us in 2017.

We look forward to serving modelers long into the future. We still love doing the weekend "train shows" as we travel throughout the country and get to meet many of our customers in person.

Website: <https://www.springcreekmodeltrains.com/>

Facebook page: <https://www.facebook.com/springcreekmodeltrains>

Real Deal



Rich Hitchcock Photo

Rich Hitchcock posted on Facebook a great photo catch of a Colorado Pacific locomotive earning its keep in Kansas. It's good to see it back in blue, but the wrong shade. WAMX 3831, a EMD GP38-2, started as **Missouri Pacific** 573, then went to BAR as 96, renumbered to 356, before going to WAMX. Who is WAMX? WATCO. All WATCOs locomotives are owned by a subsidiary: **Webb Asset Management**.



(Left) A piece of BNSF MOW equipment at the Dodge City, Kansas yard.



(Above) A long manifest train arrived in Dodge City, the crew disembarked and were picked up by the car at left.

Real Deal

(Right) The crew car is picking up the train crew...off to lunch and the motel.



(Above) A closer look at the front end in the Dodge City yard.

(Below) Three locomotives idling in the Yard.





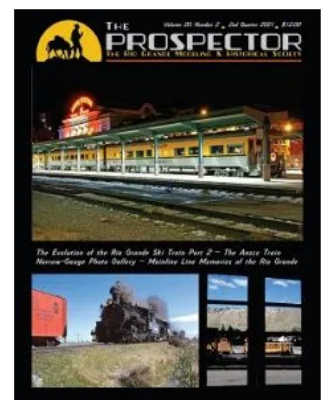


The **Rio Grande Modeling & Historical Society** is dedicated to preserving and disseminating the historical record of the Denver & Rio Grande Western Railroad and its predecessors, and to the encouragement of accurate scale modeling of those railroads.

We invite you to **join** or **renewal** your membership in the RGM&HS and join over 400 other Rio Grande Enthusiasts from all over the world.

All Members receive:

- One year (4 issue) subscription to *The Prospector*, the official magazine of the Society
- A subscription to the Society's e-mail newsletter, the Green Light.
- Members-only emails with advance notice of events, programs, and offers
- Special benefits and features in the Members-only section of the Society's website



Website: <https://rgmhs.org/>

Facebook page: <https://www.facebook.com/groups/rgmhs.org>

Home Conventions Region Info Divisions Resources Ask an Expert! Operation Lifesaver

Announcements

- Thanks to Robert Simmons for making the [March 2022 issue of the Main Line](#) available!
- Thanks to Jim Marlett for making the [March/April 2022 issue of Trails, Rails, & Tales](#) available!

Welcome to the Mid-Continent Region of the National Model Railroad Association

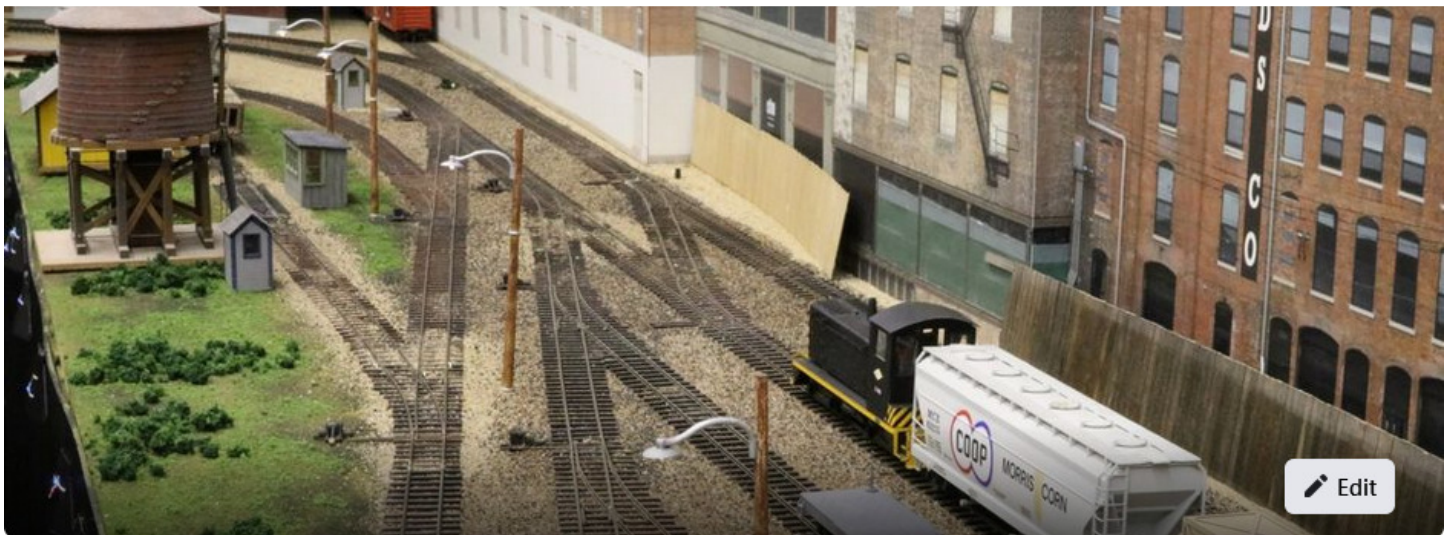
A 501(c)3 non-profit corporation, MCoR includes the southern half of the state of Iowa, portions of Illinois, and the entire states of Arkansas, Oklahoma, Missouri, Kansas and Nebraska. Since 1990, MCoR's leadership has fostered a strong program of developing local divisions with the purpose of bringing the potential for NMRA activity and involvement to a community near you. From only two divisions in 1990 located in metropolitan areas, MCoR now has well over a dozen divisions and over 900 members.

Upcoming Events

From March 18th-20th the Indian Nations Division of the NMRA. Layout, Design, Operation (LDOP) weekend. Akdar Shrine Center 2808 S Sheridan Road, Tulsa, OK 74129. Three days of operations on 16 different

The **Mid-Continent Region** of the NMRA has you covered on the internet two ways... You can go to the website: <http://mcor-nmra.org/> and find information on the Region, find your Division, the latest info on conventions, plus read the latest issues of the Region magazine, the *Caboose Kibitzer* and other Division magazines.

Option two is the Region **Facebook** page: <https://www.facebook.com/groups/1851848998468077> Click the link and you are following the activities, including layout tours, modeling projects, Train Shows around the Region, modeling tips and tricks and a lot more.



Mid-Continent Region, NMRA

Public group · 397 members

Joined ▼

+ Invite



The Santa Fe Railway Historical and Modeling Society

Purpose:

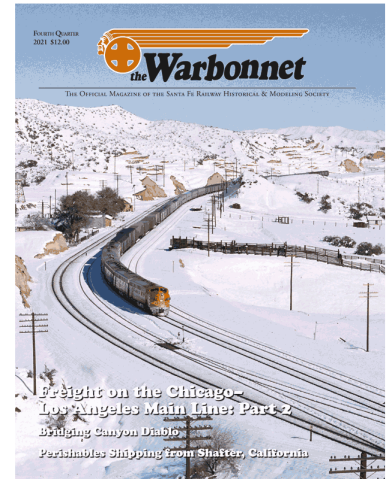
To promote, stimulate, foster and encourage by all legal manner and means the gathering, cataloging, preserving and making available to the general public for viewing, education and research, actual documents, equipment, photographs of equipment or structures, and any other data available concerning the history and heritage of The Atchison, Topeka and Santa Fe Railway Company, Incorporated and such predecessor, partnership, subsidiary, or successor organizations of that Company as history may disclose.

To advance the hobby of railroad history in general, and of The Atchison, Topeka and Santa Fe Railway Company, Incorporated in particular, wherever and whenever possible by publications, meetings and all things necessary or incident to these purposes.

The Society and its predecessors have been publishing information about the Santa Fe since 1969. The Society offers exceptional publications on the history and modeling of the Santa Fe. From its flagship quarterly magazine, *The Warbonnet*, to its comprehensive books on history, motive power, rolling stock and modeling, the Society is the definitive and authoritative source on all things Santa Fe.

Check the website: <https://sfrhms.org/>

Visit the Facebook page: <https://www.facebook.com/Santa-Fe-Railway-Historical-Modeling-Society-139733926103107>



2022 convention: The Kansas City Chief!
REGISTRATION NOW OPEN

Date: June 14-19, 2022

Convention Hotel: DoubleTree by Hilton, Kansas City-Overland Park. Located at 10100 College Boulevard, Overland Park, KS 66210.

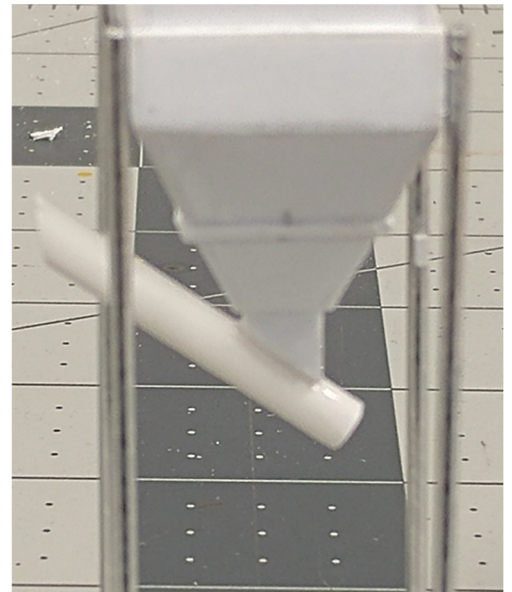
Rate: \$119/night plus taxes for Society members. This includes: 2 free breakfasts per room for June 14-18 (19th is Annual Business Meeting), free guest parking and free internet. Block rate is in effect from June 11 to June 22, but the additional days do NOT include free breakfast. The cut-off date for the \$119 fee is **May 24, 2022**. To make your reservations

WKR Layout Update

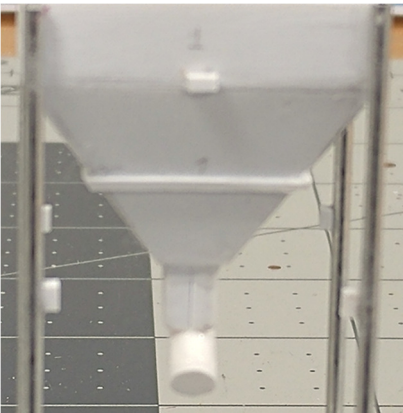


The Scenery crew of the WKR is still working on the concrete plant structures. The main building is mostly complete, and attention has turned to the cement powder hopper which is positioned on the back side.

(Left) This is a photo of the actual hopper.

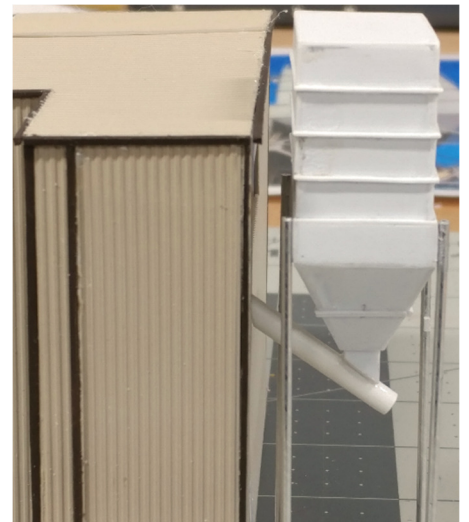


(Right) This photo shows the recent progress where the four legs are attached to the hopper base and the discharge chute has been added on the bottom.

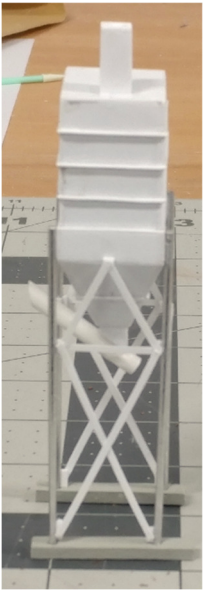


(Left) Before we can add the leg bracing, we needed to add the mounting plates which are glued to the hopper base and the sides of the legs

(Right) The nearly complete hopper is positioned behind the building to check the proper spacing and the discharge chute mates to the building.



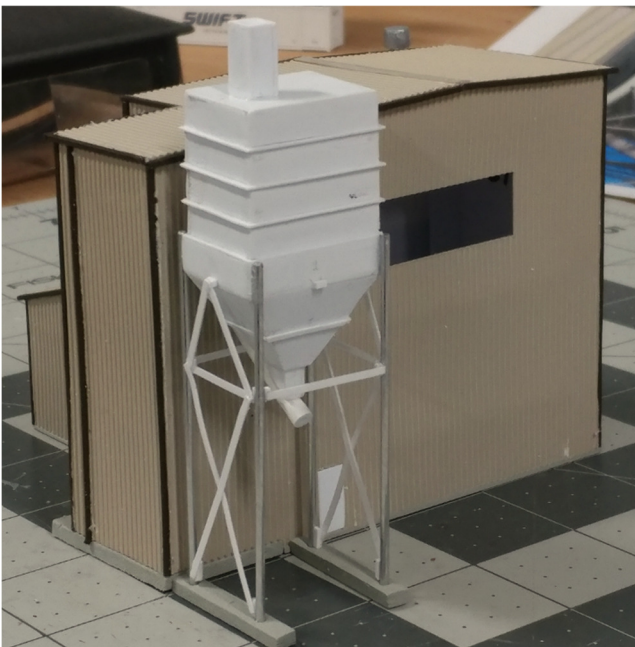
WKR Layout Update



(Left) The hopper structure after adding the side leg bracing. In addition, there is a small structure on top (I don't know what it is or does) that has also been added, as well as the concrete footers.



(Right) Checking the hopper structure next to the main building.



(Left) A view from the East side (rear) of the building. A lot more details need to be added yet, but the basic structure is complete. Next up, the water tower...

WKR Layout Update

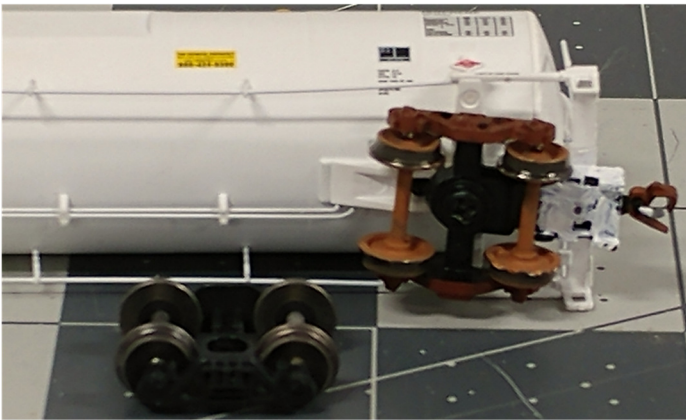


(Left) It was a lot of fun visiting with Dave and Deb of Spring Creek Model Trains when they brought their rolling store to the Train Show inn Garden City.

I enjoyed browsing their display, then the WKR Purchasing Department approved purchases for some satisfying bits and pieces to fill gaps in the WKR inventory.

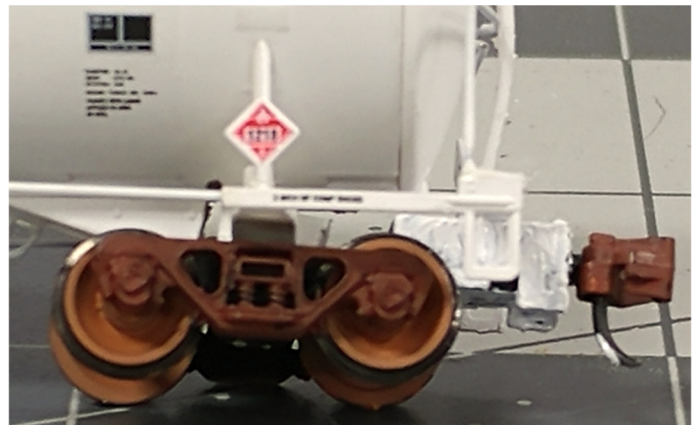


(Above) One of the new purchases was this Athearn LP gas tank car. I have had issues with these cars for some time on the WKR layout, not an Athearn issue, but I made one corner a very tight 9-3/4" radius. These long cars with body mounted couplers always derail. Part of the solution was to cut off the body mounted couplers and go with Micro-Trains wheelsets.



(Left) The body mounted coupler pockets have been removed and the Micro-Trains truck had the coupler pocket painted white to match the car. In addition, ESM (Eastern Seaboard Models) metal wheels have replaced the plastic ones.

(Right) I also had to do some surgery, both frame bolsters were angled back to the middle of the car so only two wheels of each truck were on the track. I made some cuts on the frame, then used a metal rod to straighten them. Here are the new wheels sets in proper position.



WKR Layout Update

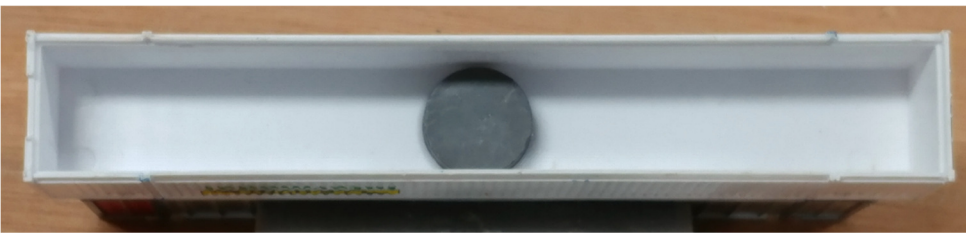


(Left) The WKR Purchasing Department also added four JTC well cars for intermodal operations. The wheelsets were removed, and the plastic wheels replaced with metal units.

(Below) The new wheelsets painted, and in place.



(Below) The new Scale Trains containers were also modified with magnets added to securely hold the containers together during transit



(Below) The finished product.





**NEW EXPANDED
RETAIL STORE HOURS**

**MON-FRI 10am to 6pm
SAT 10am to 4pm**

We are located at:
6060A West 55th Ave.
Arvada, Co. 80002

NOTE WE HAVE RECENTLY MOVED
SAME BUILDING BUT NOW OUR
DOOR IS ON THE OPPOSITE SIDE
WEST SIDE TOWARDS THE STREET



News & Info

Catalog

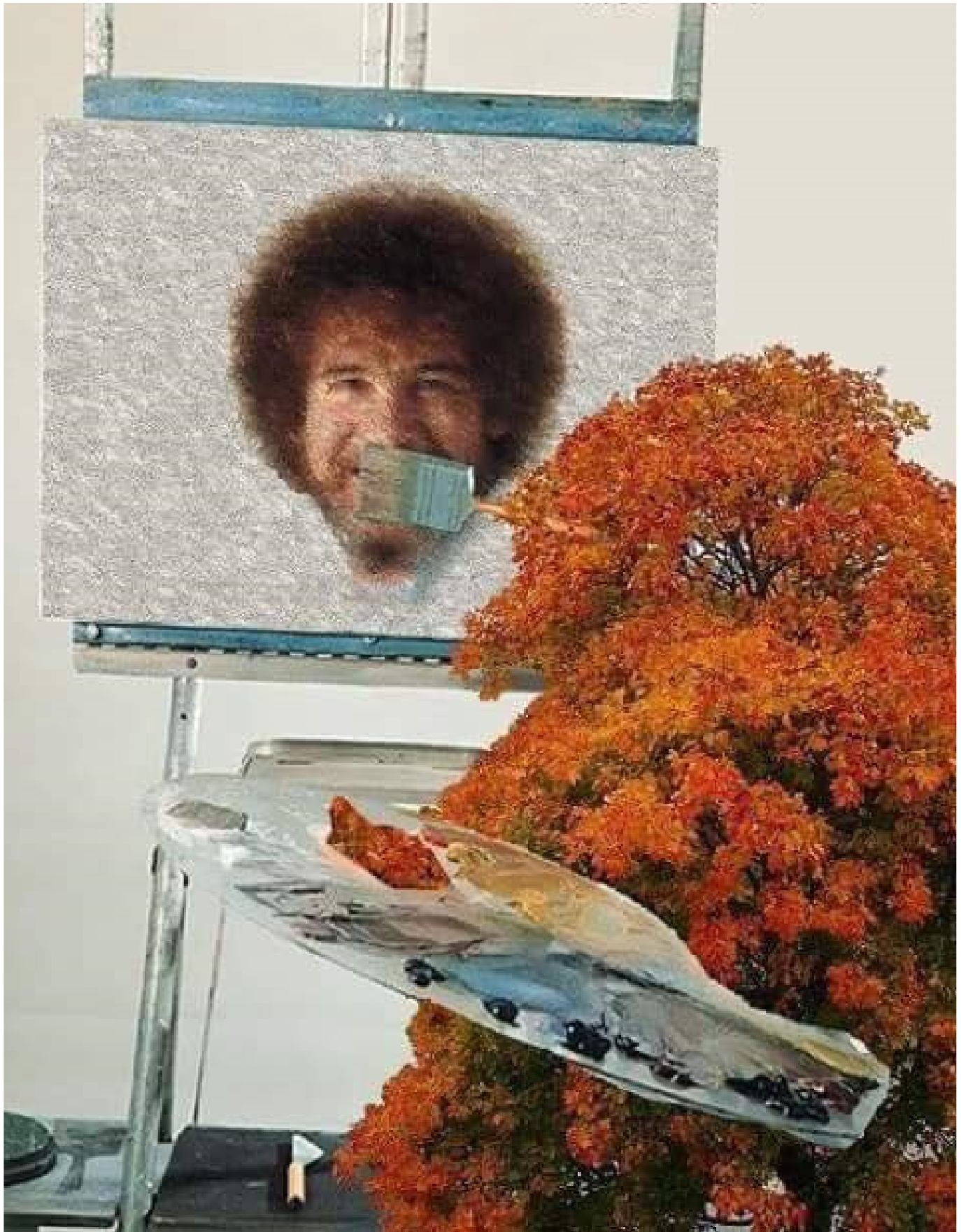
Search

Ordering Info

**Pre-Owned
Equipment**

Visit the website: <https://www.nscalesupply.com>

On the website you can scroll through the latest news, information, and the latest new offerings. If you know what you need head right to the catalog or you can search the website. Don't forget to check out our pre-owned equipment as well. We also have **Z-scale** items for sale.



“And over here, we’ll place a happy little artist...”



2022 Convention – Cheyenne, Wyoming: May 11-14. Registration will be \$195 until April 1, 2022, and after that, late registration will be \$215. The registration form will be inserted in the Fall 2021 Streamliner mailing. This year's convention will incorporate both historical programs along with model railroading. The convention is being held in conjunction with the Cheyenne Rail Heritage Days, the Sherman Hill Train Show, the Cheyenne Depot events. There is ample parking at the Model train show at the Laramie County Fair Exhibition Hall at Archer, and there will also be a shuttle bus from the hotel to the show. Weather permitting, we will also have some vintage equipment on display outside the hotel. A CA-1 Caboose will be on display outside and some live steam models on display in the lobby...



Welcome to the Union Pacific Historical Society! Founded in 1984, UPHS is an independent, non-profit organization dedicated to preserving and sharing the history of the Union Pacific Railroad. As of the beginning of 2016, the Society has about 1,900 members. Historians, railfans, employees, and modelers have found the UPHS to be a matchless source of accurate and in-depth material concerning historical operations, traffic, motive power, rolling stock and facilities of the Union Pacific and predecessor companies. Railroad employees, managers, and retirees are welcome.

Publications: The UPHS publishes *The Streamliner*, a professionally produced and beautifully illustrated quarterly journal featuring the finest work of historians and other experts on all aspects of Union Pacific Railroad operations, traffic, management, equipment, and facilities.



Website: <http://uphs.org>

Facebook page: <https://www.facebook.com/Union-Pacific-Historical-Society-131902420186325>

Trackside Model Railroading™

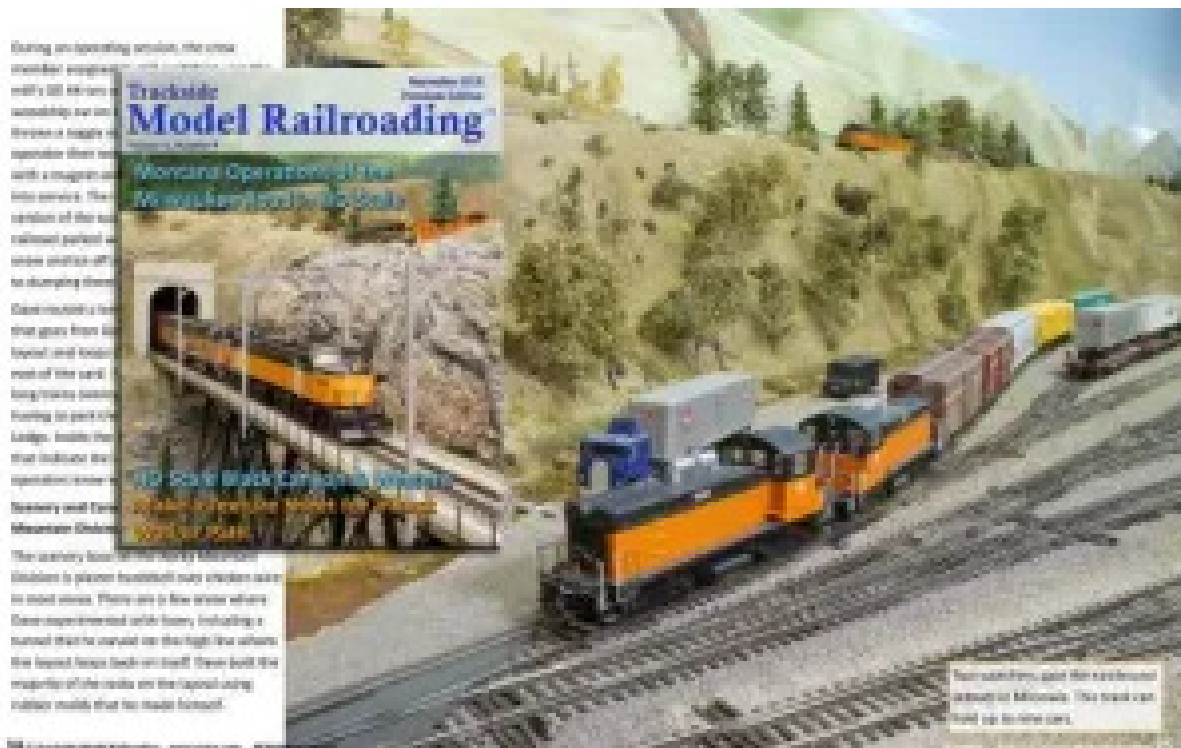
Digital Magazine & Movies

Trackside Model Railroading is a publisher for model train enthusiasts who want to enjoy layout tours in depth. The digital magazine is advertisement-free and covers two layouts each month. We feature layouts of all the fine scales with lots of full-page photos, articles about the railroads, and short videos.

Our DVD and Blu-ray movies feature much more video of the layouts and often include interviews, operations, and creative backstories and railroad history.

Click here for the website: <https://www.tracksidemodelrailroading.com/>

On the website, you can search and purchase our recent digital magazines individually without an account. The magazines are in PDF format and are downloadable, as are the videos. Our magazines feature in-depth model train layout tours with lots of high-quality photos and articles about the layouts.





Arkansas City Train Show

OPERATING
TRAIN
LAYOUTS

CONCESSIONS
ON SITE

Agri-Business
Building
712 W. Washington



- Buy
- Sell
- Trade

Saturday, April 23, 2022
9am - 4pm

Admission \$5 Adults
Children under 12 free
w/paid adult



Sponsored by Wichita Toy Train
Museum/Club
(www.wichitatomytrainmuseum.org)
and
Visit Ark City



Rocky Mountain Train Show™

April 2nd & 3rd 2022

Saturday 10 am - 5 pm, Sunday 10 am - 4 pm

National Western Complex

4655 Humboldt St Denver, CO 80216



**Parking
included
with
ticket
purchase!**



Over 700 Tables of Trains - All Scales and Gauges



YOUTH in MODEL RAILROADING

Come see what Youth in Model Railroading is ALL about at the Rocky Mountain Train Show this weekend at the National Western Complex.

“Having FUN is what’s it’s all about”



2nd Annual Herington Kansas Railroad Days

Saturday/Sunday April 30 & May 1, 2022
9 AM to 4 PM both days Admission by Donation
Herington Community Building
810 S. Broadway - Herington, KS 67449



- Buy/Sell/Trade Model RR equipment and railroad memorabilia
- Operating Model RR Layouts
- Clinics / Workshops
- Concessions
- Visit the Herington Historical Museum and Railroad Annex

heringtonrailroaddays.com

Ph. 316-258-4500

Proceeds benefit Herington Historical Museum

- Over 80 Tables of Model Railroad items and railroad memorabilia.

- 5 operating layouts in N-scale, HO-scale, and G-scale

Check the website: <https://heringtonhistory.org/heringtonrailroaddays/>

Date Book

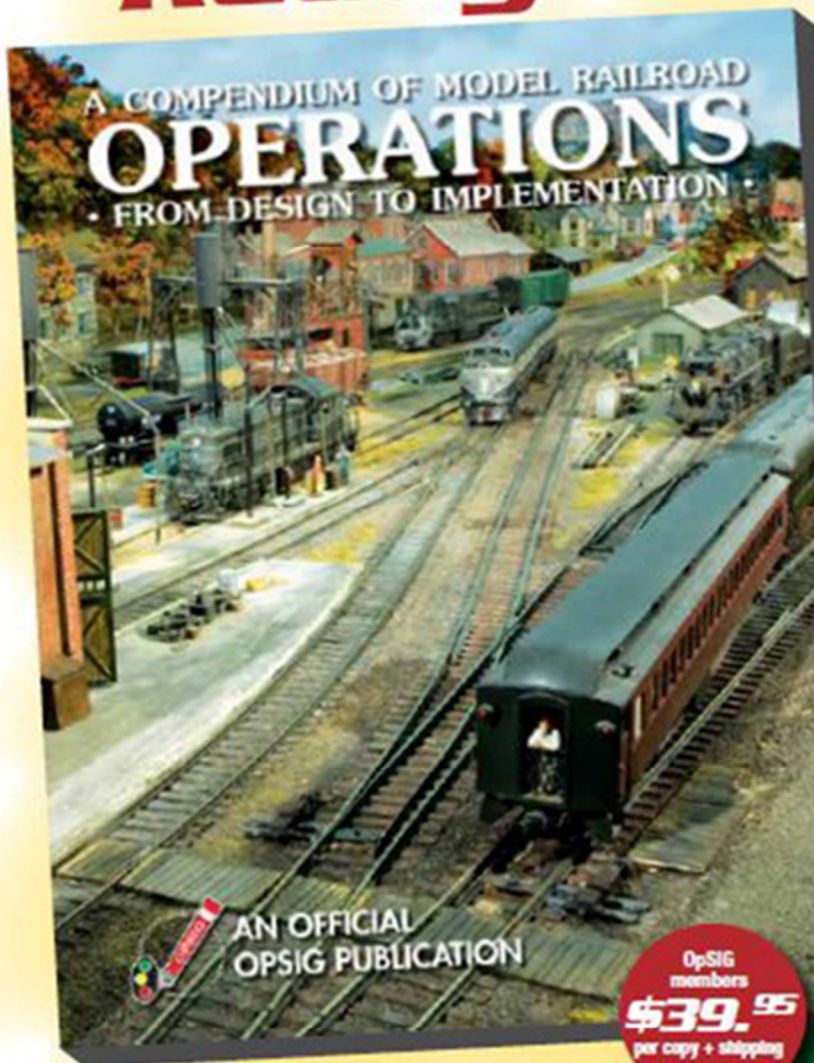
April 2022

2nd Saturday	Greater Tulsa Area Train Show (Toy Train Operating Society) http://www.ttos-soonerdiv.org/division-events.html	Bixby, OK.
2 nd & 3 rd Sat – Sun	Rocky Mountain Train Show https://rockymountaintrainshow.com/Default.aspx	Denver, CO.
9 th & 10 th Sat – Sun	North Platte 28th Annual Train Show D & N Event Center – 501 East Walker Road	North Platte, NE.
23 rd Saturday	Arkansas City Model Train Show http://www.wichitatomtrainmuseum.org/	Arkansas City, KS.
30 th & 1 st Sat – Sun	Herington Railroad Days Herington Community Building https://heringtonhistory.org/heringtonrailroaddays/	Herington, KS.
29 th & 1 st Fri – Sun	Rocky Ops (North) http://www.covenantfamilyministries.org/RockyOp/index.html	Denver, CO.

June 2022

19 th – 25 th Sun – Sat	National Garden Railway Convention https://www.ngrc2022.org/	Denver, CO.
--	--	-------------

Dispatcher to OpSIG Publication No. 2, you're ...
Ready to Roll!



All model railroaders, whether expert or beginner, will find a wealth of useful information in the OpSIG's second publication, **A Compendium of Model Railroad Operations - From Design to Implementation**. A complete guide to all things operations, our latest offering covers every aspect of prototype operations and how to apply them to your model railroad—from design and staffing to yards and paperwork, from communications and signals to dispatching and car forwarding—in 310 full-color pages. Written by ten of your fellow modelers and professionals, **The Compendium** contains more than 350 photos, 120 illustrations, and countless tips, pointers, suggestions, and prototype information to help guide you on your journey. A must for any modeler interested in prototype operations, add it to your library today!

OpSIG members
\$39.95
 per copy + shipping

Non-members
\$49.95
 per copy + shipping

Shipping: US (\$8)
 Canada/Mexico (\$21)
 Overseas (\$28)

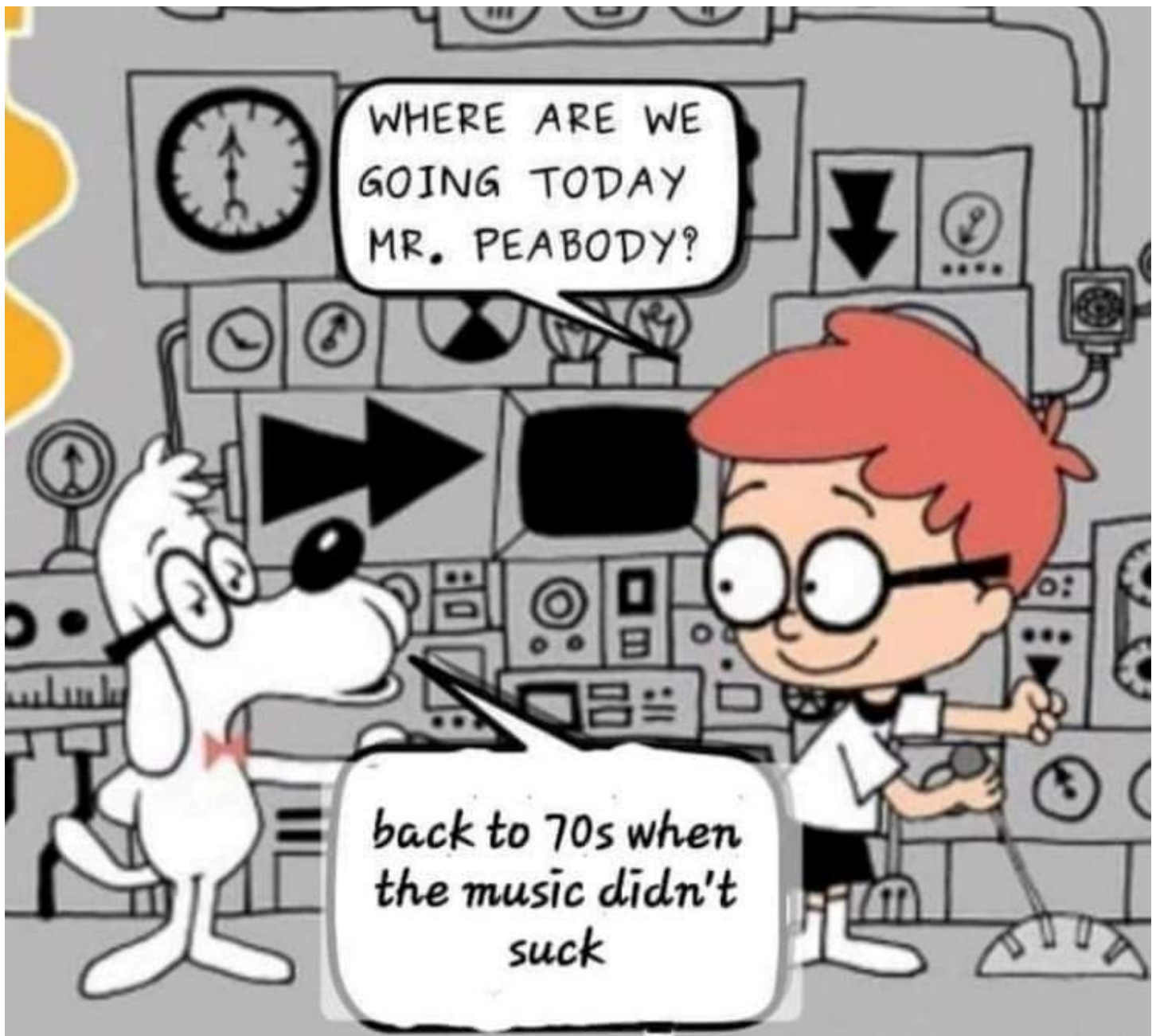
For shipping rates on multiple books, as well as better international shipping, please contact Steve Benezra.

To Order: Please mail a check or money order, payable to OpSIG, with number of copies and your mailing address, phone number, and e-mail to:

Steve Benezra
 2737 Thistle Trail
 Hillsborough, NC 27278-9302
 Opsig.editor@gmail.com

For Paypal orders, please add \$1 to the cost of the book and send to OPERSIG@yahoo.com. Provide your mailing address and telephone number in the subject box.

The OpSIG is a 501(c)3 non-profit corporation. For information on how to join the OpSIG, please visit www.opsig.org.



The *Main Line*

Publisher & Editor: Robert A. Simmons

The newsletter of the Western Kansas Division is published monthly for no charge by Robert A. Simmons, Division Superintendent / Director

Copyright 2022, by Robert A. Simmons, all rights reserved

If you have a change of e-mail address, or no longer wish to receive the newsletter, please contact Robert Simmons

Trainman55@hotmail.com or P.O. Box 157 – Dodge City, KS. 67801 or call (620) 521-3591

Please send all inquiries, ideas, or submissions to: trainman55@hotmail.com