



The

# *Main Line*

August 2022



National Model Railroad Association

Mid-Continent Region

The Monthly publication of the



**Western Kansas Division**

## On The Cover:

Jim Adams has been working on his HO-scale layout, “Adamsville”, and we bring you some updates on this highly detailed layout – Page 20

## In This Issue:

**NMRA National Convention – Page 3**

**The Real Deal – Page 10**

**A Brief Stop In Adamsville – Page 20**

**WKR Update – Page 28**

**Date Book – Page 37**





## The Santa Fe Railway Historical and Modeling Society

The Santa Fe Railway Historical & Modeling Society is an independent non-profit corporation devoted to preserving, studying, and sharing information about the former Santa Fe Railway, from its rich history and fascinating operations, to its distinctive equipment and facilities.

2022 Kansas City Convention was a great reunion! Nearly 200 members and friends attended with friendships renewed, new members joining, and great information exchanged. Watch for the Convention report in the next week or two.

**2023 Convention** will be in Houston with an Extra Fare trip to Galveston, both in Texas. **Save the dates: June 7-11, 2023.**

Congratulations to **Bill Van der Meer** for earning the 7th *Master Santa Fe Modeler*! Congratulations, Bill, and we will run an article in the *Running Extra* and post on the website what goes into the making of a Master Santa Fe Modeler!

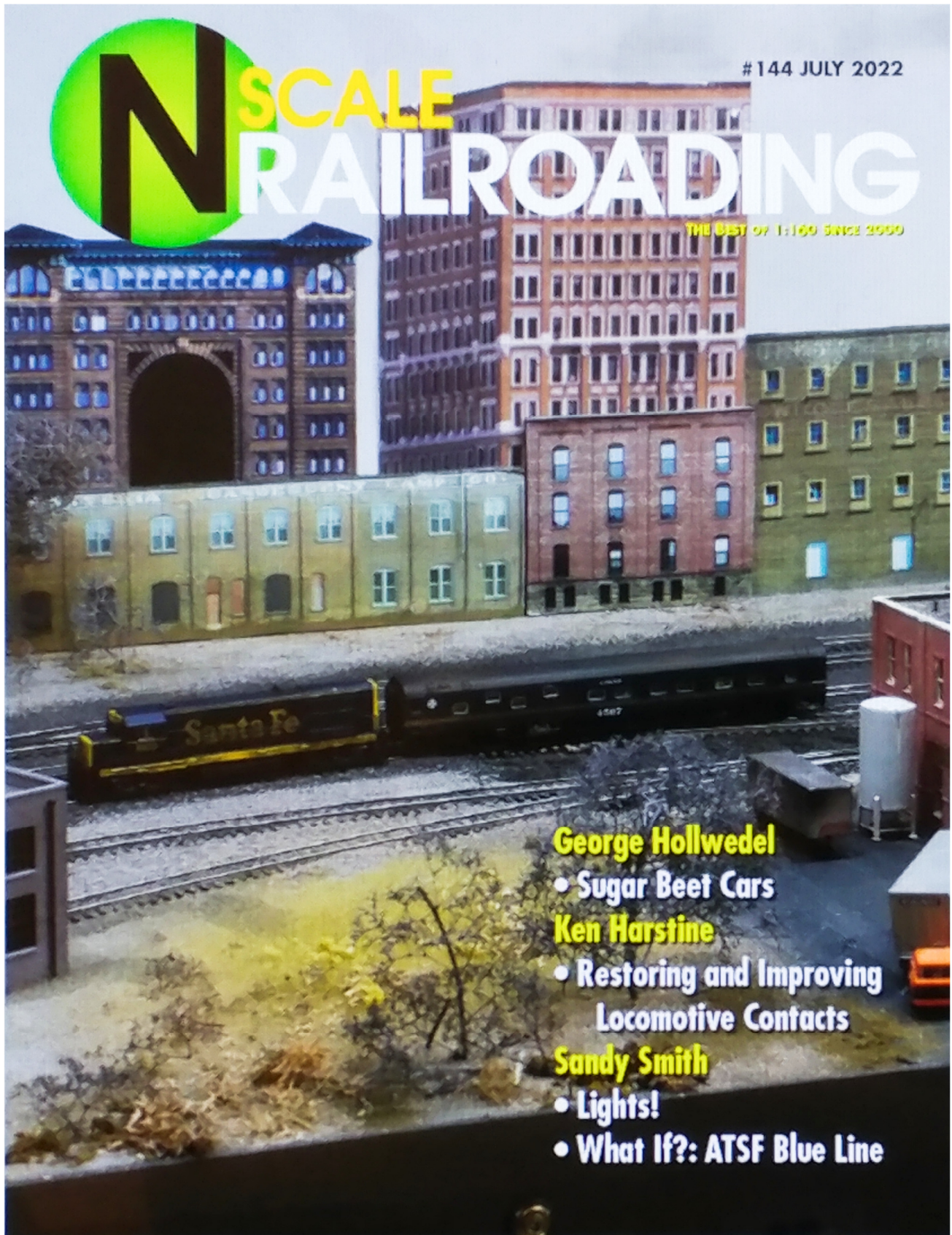
The Society and its predecessors have been publishing information about the Santa Fe since 1969. The Society offers exceptional publications on the history and modeling of the Santa Fe. From its flagship quarterly magazine, *The Warbonnet*, to its comprehensive books on history, motive power, rolling stock and modeling, the Society is the definitive and authoritative source on all things Santa Fe.



Click here for the Society website: <https://sfrhms.org/>

Click here for the Society Facebook page: <https://www.facebook.com/SFRHMS>





Click the link to start reading: <https://nsclerailroadingmagazine.com/>



# Gateway 2022

Gateway Rail Productions LLC



Sun, August 07, 2022 @ 08:00 AM — Sat, August 13, 2022 @ 06:00 PM (CDT)



The 2022 NMRA annual convention is August 7-13. The event is being held at the St Louis, Marriott Grand Hotel. Registrants will receive one free self-driving tour.

## Banquet

### Convention Banquet

\$ 79.95

The banquet will be held on Saturday, August 13th with a reception starting at 6 PM and dinner at 7 PM. The banquet will take place in the hotel's, 20th floor Crystal Ballroom. Dinner will be buffet style and feature Bistro Tender Steak and Artichoke and Boursin Stuffed Chicken Breast.

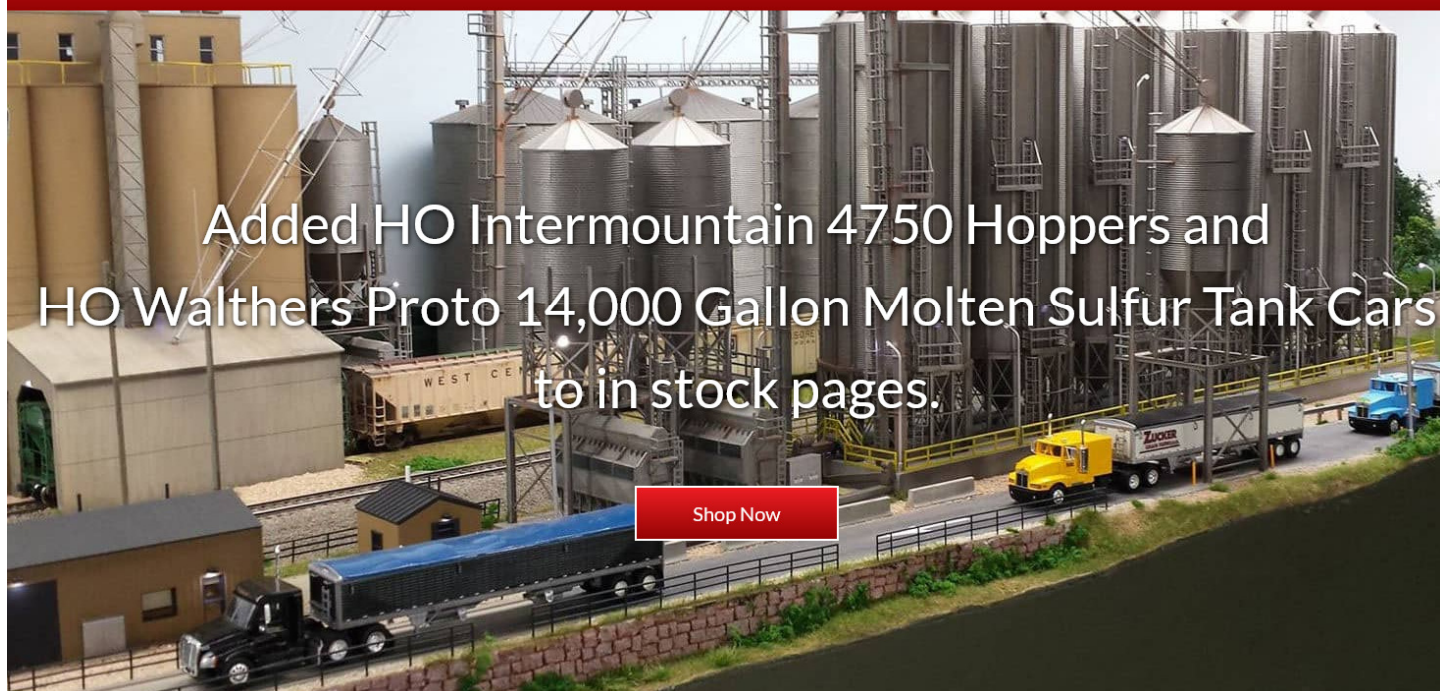
The Key Note speaker is Michael Gross of movie and television fame.



## Register today...

Click here for the website: [https://www.eventsquid.com/contestant-Reg.cfm?event\\_id=13724&a=1](https://www.eventsquid.com/contestant-Reg.cfm?event_id=13724&a=1)





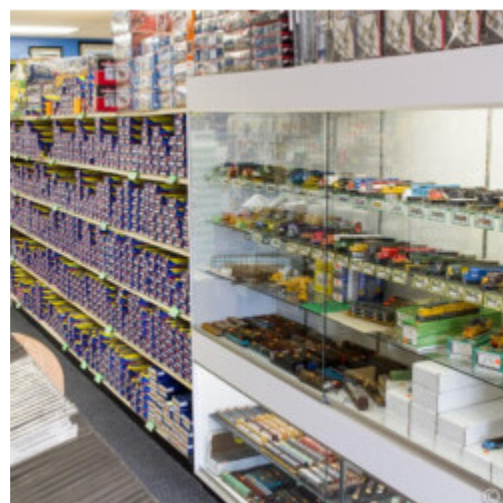
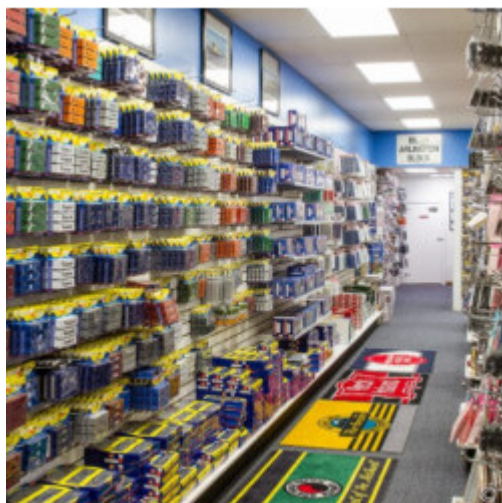
Added HO Intermountain 4750 Hoppers and  
HO Walther's Proto 14,000 Gallon Molten Sulfur Tank Cars  
to in stock pages.

[Shop Now](#)

Click here to check out their website: <https://www.springcreekmodeltrains.com/>

## The Next Show We Are Attending

Dave will be at the **St. Louis Railroad Prototype Modelers Meet** in Collinsville Illinois at the **Gateway Center**. The show is open Friday July 29<sup>th</sup> from 9:00am to 5:00pm and Saturday July 30<sup>th</sup> from 9:00am to 4:00pm.



The Spring Creek Model Trains [Facebook](#) page can be found here:  
<https://www.facebook.com/springcreekmodeltrains>



**I won't text him all day  
That'll teach him**



**Whatever floats your boat baby**



Check out the **Western Kansas Division YouTube** page:  
[https://www.youtube.com/channel/UC9EPv8cQ04rRGAYts-734jw?view\\_as=subscriber](https://www.youtube.com/channel/UC9EPv8cQ04rRGAYts-734jw?view_as=subscriber)



**Robert Simmons**  
854 subscribers

CUSTOMIZE CHANNEL

MANAGE VIDEOS

HOME

VIDEOS

PLAYLISTS

COMMUNITY

CHANNELS

ABOUT



Uploads ▶ PLAY ALL



**New Athearn N-scale Reefer w/Sound Demo**

236 views • 8 days ago



**What I Have Been Up To...**

99 views • 13 days ago



**BNSF Dodge City, KS. Yard Switching 6/16/22**

28 views • 1 month ago



**BNSF RC Yard Switching - 6/4/22**

121 views • 1 month ago



**Canadian Pacific Loco Switching for BNSF in Dodge City, KS. 4/13/22**

95 views • 3 months ago



**Intermodal and Grain Trains - Part II**

100 views • 3 months ago

## Channel analytics

Current subscribers

854

## Top videos

Last 48 hours · Views

New Athearn N-scale Reefer w/Sound Demo 14

Steve Weidner On30 5

Lap Around the WKR N-scale Layout 3

Recent Videos:



**What I Have Been Up To...**

99 views • 13 days ago

<https://www.youtube.com/watch?v=kirslwVs1sw>



**New Athearn N-scale Reefer w/Sound Demo**

236 views • 8 days ago

<https://www.youtube.com/watch?v=fuPEh6QL2ag>





## The Missouri Pacific Historical Society

Our mission is to preserve and promote the heritage of the Missouri Pacific Railroad and its affiliates. This includes the Texas & Pacific, Chicago & Eastern Illinois, Kansas Oklahoma & Gulf, Alton & Southern and many other roads that were part of the MP family. Please consider becoming a member and help us keep this history alive

## Annual Convention

**The 2022 convention will be held in Palestine, TX on October 6-9.**

**Planning has begun for the 2023 convention. It will be held in Wichita, KS.**

**The 2024 convention is tentatively scheduled to be held in Pueblo, CO with the RGHS.**



The MPHS publishes a quarterly magazine called *"The Eagle."* All members receive a copy of this magazine as part of their membership dues. Copies of this magazine can be purchased through our Company Store.

Visit the MPHS website: <https://www.mopac.org/>

Check out the **Facebook** page: <https://www.facebook.com/MoPacHistorical>

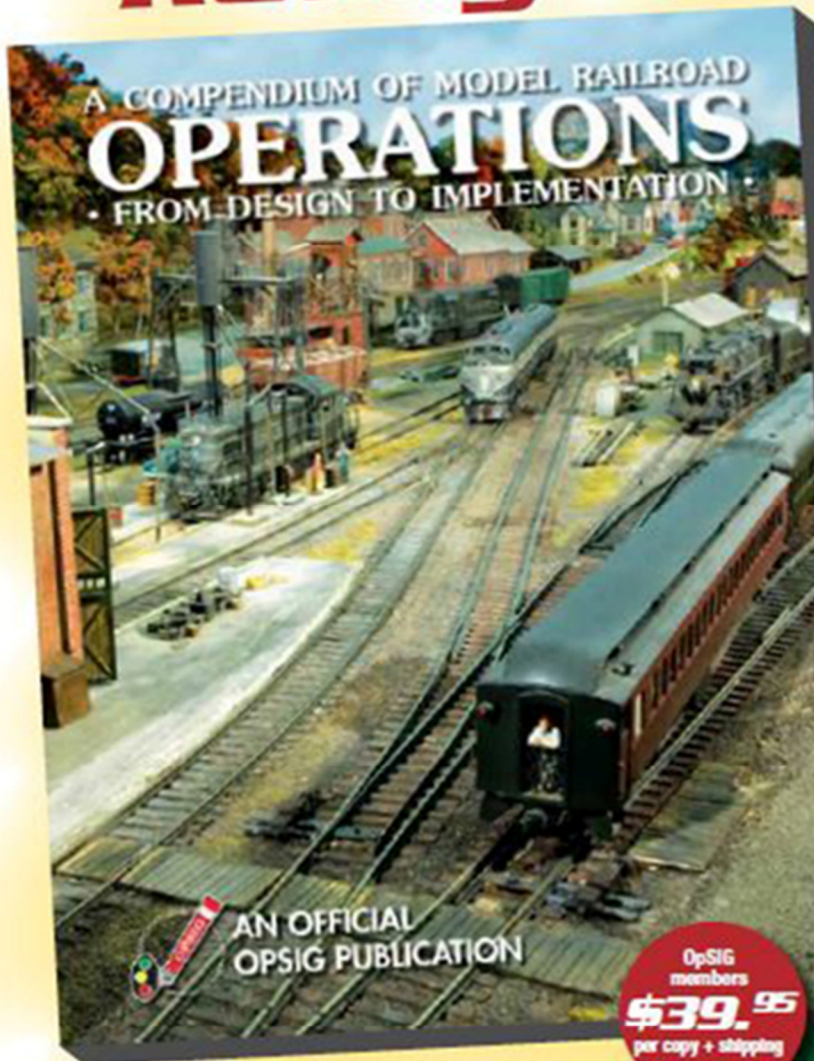




**JULY 2022:** The Illinois Terminal O'Fallon Branch proved to be the perfect setting for Steve Goaring's HO scale model railroad, featuring laid-back branch line operations set in the summer of 1961. The late Jim Sacco kitbashes a modern warehouse using off-the-shelf Pikestuff kits, while Phil Holden shows us how he scratchbuilt a unique three-door wooden boxcar for his logging camp. Inspired by a vintage photo in a book, Jorge Faz builds a model of a unique dimensional billboard in HO and O scale. Enjoy modeling tips and techniques, product news and reviews, and more in the July issue of Railroad Model Craftsman!

Click the link to subscribe and start reading: <https://rrmodelcraftsman.com/>

Dispatcher to OpSIG Publication No. 2, you're ...  
**Ready to Roll!**



All model railroaders, whether expert or beginner, will find a wealth of useful information in the OpSIG's second publication, **A Compendium of Model Railroad Operations - From Design to Implementation**. A complete guide to all things operations, our latest offering covers every aspect of prototype operations and how to apply them to your model railroad—from design and staffing to yards and paperwork, from communications and signals to dispatching and car forwarding—in 310 full-color pages. Written by ten of your fellow modelers and professionals, **The Compendium** contains more than 350 photos, 120 illustrations, and countless tips, pointers, suggestions, and prototype information to help guide you on your journey. A must for any modeler interested in prototype operations, add it to your library today!

OpSIG  
members  
**\$39.95**  
per copy + shipping

Non-  
members  
**\$49.95**  
per copy + shipping

Shipping: US (\$8)  
Canada/Mexico (\$21)  
Overseas (\$28)

For shipping rates on multiple books,  
as well as better international shipping,  
please contact Steve Benezra.

**To Order:** Please mail a check or money order, payable to OpSIG, with number of copies and your mailing address, phone number, and e-mail to:

Steve Benezra  
2737 Thistle Trail  
Hillsborough, NC 27278-9302  
Opsig.editor@gmail.com

For Paypal orders, please add \$1 to the cost of the book and send to [OPERSIG@yahoo.com](mailto:OPERSIG@yahoo.com). Provide your mailing address and telephone number in the subject box.

The OpSIG is a 501(c)3 non-profit corporation. For information on how to join the OpSIG, please visit [www.opsig.org](http://www.opsig.org).



# The Real Deal



July 1<sup>st</sup> provided a fantastic opportunity as a Boeing 737 train paused in the yard in Dodge City, Kansas. The trains come through on a regular basis, however usually they are parked in the middle, hidden by other trains.

On this day, the Boeing train was accessible from both sides, so I was able to get closer for better pictures.





# The Real Deal



(Above) On July 12<sup>th</sup>, I came across BNSF 732. It was constructed by General Electric as a C44-9W in July of 1997 wearing the “Warbonnet” paint scheme. I was under the impression that the replacement part in orange was a one-off.

(Below) On July 18<sup>th</sup>, I ran across BNSF 724, which was also constructed in July of 1997 as a C44-9W, and it also features the mismatched replacement part. Both were in the yard in Dodge City, Kansas.





# The Real Deal



On July 19<sup>th</sup>, I came across this veteran, Santa Fe 1648 in the Dodge City BNSF yard. It began life as Atchison, Topeka, & Santa Fe **5108** in October of 1979, painted in the “Blue Warbonnet” scheme.

It also wore BNSF **6767**, and currently BNSF **1648**.



(Below) A close-up of the front end.





# The Real Deal



(Above) A close-up rear view of BNSF 1648.

(Below) As of July 19<sup>th</sup>, the ADM slug is still in the Dodge City BNSF yard.

(UPDATE) A Facebook posting (7/29) showed the slug is gone from Dodge and is in Newton, KS.







## Class One Model Works

**New Brand Coming soon!**



**Class One Model Works** is a brand new manufacturer with their first product release coming this fall. We will be taking pre-orders for this product and we ask that you email or call us to get in a reservation. [info@midwestmodelrr.com](mailto:info@midwestmodelrr.com)

We are working on an online pre-order system that we do hope to launch in the near future.

**TWF10** - Thrall Corporation built 75 single-unit double-stack well cars with a very unique appearance in the early 1990s. These cars used unique Waggon Union trucks, initially developed for use on the prototype Well-Runner car number DTTX 110023.

While pricing has not been nailed down completely yet, you can be assured there will be some discount below MSRP.

Click here for the Midwest Model Railroad website: <https://midwestmodelrr.com>  
Click here for the MMR Facebook page: <https://www.facebook.com/MidwestmodelRailroad>



The friends of the **Burlington Northern Railroad** exist to preserve the history and chronicle the operation of the Burlington Northern Railroad and its successors, as well as the MRL. For information on historical societies for railroads that merged to become the BN or BNSF.



The *BN Expediter* – July 2022

Regular members get 4 copies of *The BN Expediter* and can buy our annual BN calendar for \$2 off the regular price.

Click here for the FOBNR website where you find all sorts of interesting, informative and useful information about the BN, BNSF and MRL such as locomotive and freight car lists, employee timetables, yard maps and much, much more: <https://fobnr.org/>



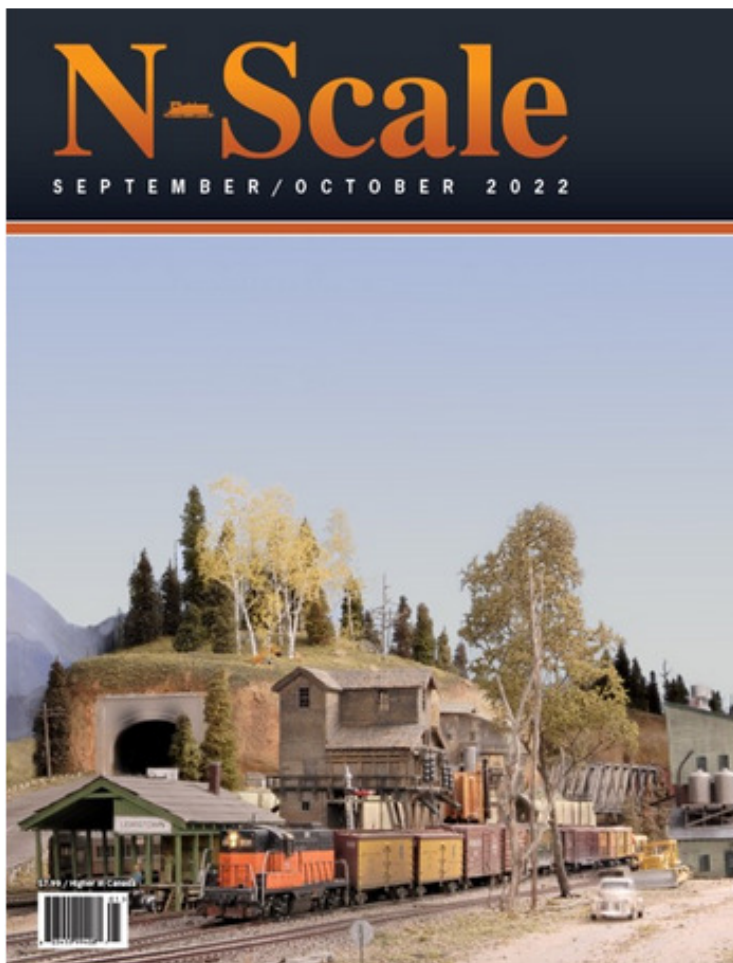
**Friends of the Burlington Northern Railroad**

@fobnr · ★ 5 4 reviews ⓘ · Nonprofit organization

Click here for the FOBNR **Facebook** page: <https://www.facebook.com/fobnr>



# N-Scale



**On the cover:** Time Freight 196, which ran daily between Great Falls and Lewistown, rolls past the Lewistown freight house with a mix of cars. By the 1953 Timetable, the train left Falls Yard at 2:00 PM, and the scheduled arrival at Lewistown was 8:00 PM. In mid-summer, there still is a lot of daylight left. You can find this and more in Dan Lewis' Lewistown Series, starting on page 16.

## IN THE CURRENT ISSUE

### **Quick Detailing**

by Walt Huston, Editor Emeritus

### **The Lewistown Series**

Part 5: Streets, Roads, Alleys and a Corner Module  
by Dan Lewis, MMR

### **Modeling a Well-Known Movie Ranch Structure**

by Nick Rissman

### **Quick Notes**

Three Little Kits  
by Dennis Murphy

### **In Pursuit of WOW!**

Part 17 – Painting & Weathering Hydrocal Walls & Kits  
by Dennis Machlica

### **Saulenas Tavern Build**

by Dave Pomarenski

### **The Short & Nn3arrow**

Re-motoring the Lok-14 K-27  
by Thomas Knapp, MMR #101

## **DIGITAL EDITION NOW AVAILABLE**

**30 Years of N-Scale Magazine  
Now Available on CD.**

Click the link to subscribe and start reading: <http://www.nscalemagazine.com/>

# No joke. It's here. Digital

But you must be registered on the nmra.org website



**New NMRA Digital Magazine**

Brand new, the magazine in digital!





**GETTING STARTED**  
IN MODEL RAILROADING

**BECOME A MEMBER**  
JOIN THE NMRA TODAY!

**DONATE TODAY**  
EVERY GIFT HELPS

**Welcome to the National Model Railroad Association**

Please View 'In The News' For Current News And Information

## Want to "test drive" the NMRA for a little while?

Sign up for our [9-month Rail Pass trial membership](#) for only \$19.95! Includes 9 months of the *Digital NMRA Magazine*, plus all regular member benefits (except voting).

After much hard work by former NMRA President Charlie Getz and *Narrow Gauge & Shortline Gazette* editor Bob Brown, and many delays by the California State Parks Commission, “The Magic of Scale Model Railroading” exhibit at the California State Railroad Museum in Sacramento is open!

The exhibit is literally Smithsonian quality and traces the history of model railroading from its inception to today, as well as showing non-modelers how a train layout is built, pieces of several finished layouts, and the various tools and models of our great hobby.



## Beginners Guide

The [Beginner's Guide](#) on the NMRA's website is designed to take novice model railroaders and help them develop the skills necessary to build a model railroad and enjoy the hobby.

Click the link for the NMRA website: <https://www.nmra.org/>

For the NMRA [Facebook](#) page, click here: <https://www.facebook.com/NMRA.org>





That awkward moment when your  
Wife finds your model train stash...

The purpose of NRail is to promote N Scale model railroading in all forms, all standards wherever N Scale is present. NRail has been the voice of N Scale model railroading for over 45 years. Starting as NTRAK, it created the first national modular standard, provided the vehicle for N Scale to grow to the second most popular scale in North America, was the birthplace of T-TRAK and today is the home of N Scale model railroading. We welcome all N scalers

## Next Events:

### [2022 NMRA National Convention & National Train Show](#)

Sunday, August 07, 2022 | Saint Louis, MO

### [Central Arkansas Train and Hobby Show](#)

Saturday, August 27, 2022 9:00 AM | Conway Expo Center, 2505 East Oak St, Conway AR 72032

### [61st Atlanta Model Train Show](#)

Saturday, August 27, 2022 9:00 AM |

## [\*\*BECOME A MEMBER - JOIN US NOW!\*\*](#)

Membership in NRail includes:

- **One year of the Newsletter (6 issues).**
- **Monthly ZoomTRAK live broadcasts.**
- **Support of the National N Scale layouts at major shows.**
- **Access to the Members Only section of NRail.org (including over 270 issues of the Newsletter).**
- **Discount on merchandise in the [NRail store](#).**

Click here for the N-Rail website: <https://nrail.org/>

For the N-Rail Facebook page, click here: <https://www.facebook.com/NRail.org>



## A Brief Stop In Adamsville

Jim Adams of Lakin, Kansas who is currently the acting President of the **Boot Hill Model Railroad Club** has been busy expanding and working on his home HO-scale layout.

(This Page) Jim has stated that the most enjoyable aspect of the hobby is scenery, specifically scratch-building structures and scenes.

Jim sent a few pictures of his progress of expanding “Adamsville” with this addition of a High School athletic field plus a small residential area.

From the photos, this new section includes a football field, track, bleachers, bus barn, a new residential area and a lot of details.





## A Brief Stop In Adamsville



More to come next month...



# Trackside Model Railroading™

July 2022  
Premium Edition

Volume 10, Number 7

**Last Days on the Weyerhaeuser  
Woods Railroad in HO Scale**

**Pill Bottle Water Towers**

**Mountain High Stakes  
on the Pacific Northwestern**

Click here to subscribe and start reading: <https://www.tracksidemodelrailroading.com/magazine/>





# SCALE TRAINS

www.ScaleTrains.com



## ALL-NEW MODEL PS-5820 COVERED HOPPER CAR

**PREORDER NOW**

The new **ScaleTrains** Rivet Counter HO Scale series model of the **Pullman-Standard 5820cf covered hopper** represents many months of painstaking research and engineering work to capture the original design features of the prototype, as well as changes made to the cars late in their lives. All three production versions have been created, and various appliances that cover the cars from their first days until the present have been tooled.

Click here for the Scale Trains website to pre-order today: <https://www.scaletrains.com/>





## the Union Pacific Historical Society!

Founded in 1984, UPHS is an independent, non-profit organization dedicated to preserving and sharing the history of the Union Pacific Railroad. As of the beginning of 2016, the Society has about 1,900 members. Historians, railfans, employees, and modelers have found the UPHS to be a matchless source of accurate and in-depth material concerning historical operations, traffic, motive power, rolling stock and facilities of the Union Pacific and predecessor companies. Railroad employees, managers, and retirees are welcome.



### Publications:

The UPHS publishes *The Streamliner*, a professionally produced and beautifully illustrated quarterly journal featuring the finest work of historians and other experts on all aspects of Union Pacific Railroad operations, traffic, management, equipment, and facilities.

In addition to our journal, the UPHS publishes books relating Union Pacific's rich history of traffic, operations, motive power, and rolling stock. Our most recent book is Jeff Asay's *Union Pacific Northwest*, tracing the history of UP in Oregon, Washington, and Northern Idaho. We also have published a history of the early streamliner era 1934-1941 as well as a comprehensive series of prototype photo books of UP steam power.

## Join Today!

Click here for the UPHS website: <https://uphs.org/>

For the UPHS Facebook page, click here: <https://www.facebook.com/groups/510647068947263>



**Announcements**

- Thanks to Jim Marlett for making the [July/August 2022 issue of Trails, Rails, & Tales](#) available!
- Thanks to Robert Simmons for making the [July 2022 issue of the Main Line](#) available!

The First Quarter 2022 issue of the [Caboose Kibitzer](#) is available. Thanks to Ray Brady for his work and please send him your articles!

**Welcome to the Mid-Continent Region of the National Model Railroad Association**

**A 501(c)3 non-profit corporation**, MCoR includes the southern half of the state of Iowa, portions of Illinois, and the entire states of Arkansas, Oklahoma, Missouri, Kansas and Nebraska. Since 1990, MCoR's leadership has fostered a strong program of developing local divisions with the purpose of bringing the potential for NMRA activity and involvement to a community near you. From only two divisions in 1990 located in metropolitan areas, MCoR now has well over a dozen divisions and over 900 members.

**Follow Us On Facebook**

The Mid-Continent Region now has a [Facebook Group](#) (Thanks Bob!). Please check it out and friend!!

**Upcoming Events**

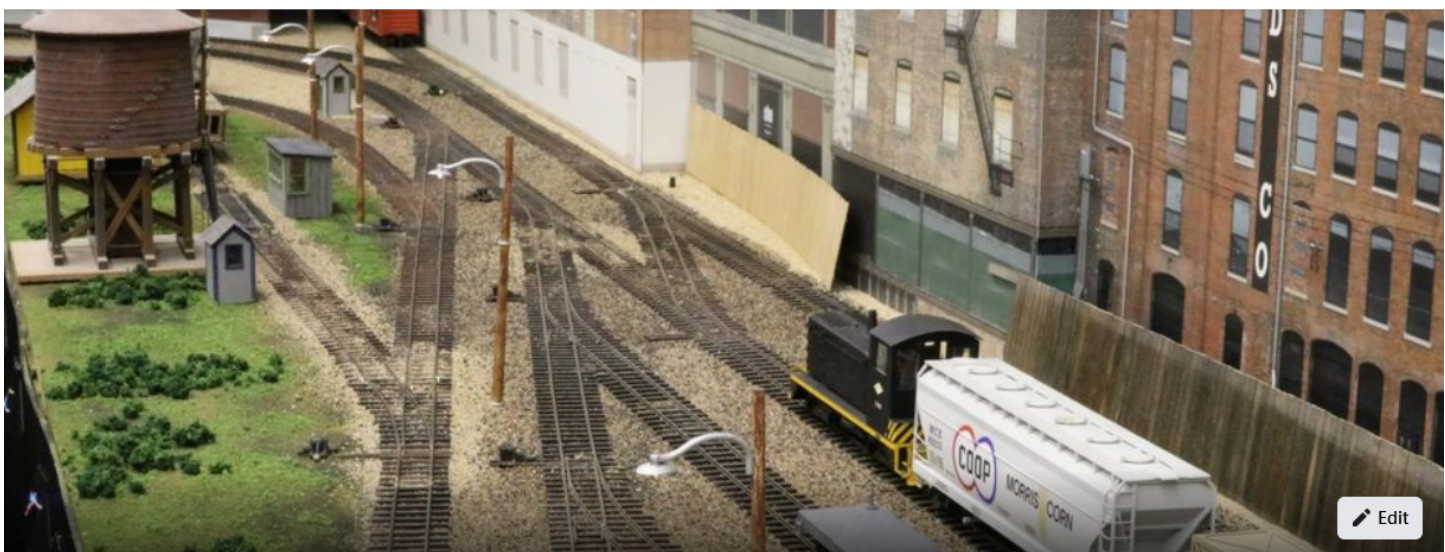
The 2022 General Membership Meeting will be held in Kirkwood, MO during the week of the national convention. Time and date will be updated here as more information becomes available.

The [website for the 2022 National Convention](#) is now open!

If you are located within the Mid-Continent Region of the NMRA, track what is happening with the MCoR website: <http://mcor-nmra.org/>

Surfing Facebook? You're in luck, MCoR also has a Facebook page featuring MCoR model projects, train shows and events, new product releases, and a lot more.

Click here: <https://www.facebook.com/groups/1851848998468077>



## Mid-Continent Region, NMRA

Public group · 434 members

Joined ▼

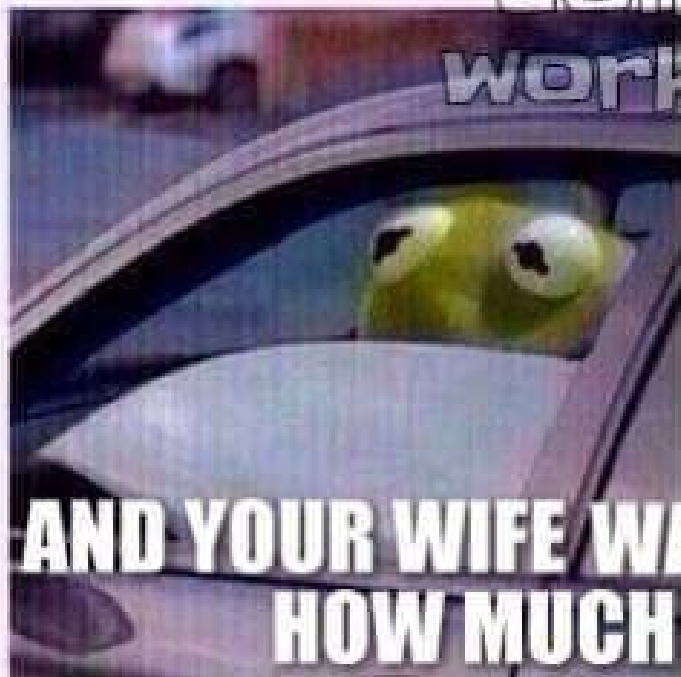
+ Invite



**WHEN YOU'RE OFF TO THE HOBBY SHOP**



the  
combat  
workshop



**AND YOUR WIFE WANTS TO KNOW  
HOW MUCH YOU SPENDIN'**



The principal purpose of the **Operations Special Interest Group (OPSIG)** is to discuss, develop and disseminate ways of operating model railroads to realistically emulate practices of the prototype. This includes sharing information on various methods of generating and controlling traffic to heighten the feeling that our models are an active and integral part of the national rail transportation network, serving shippers and consignees throughout the nation. We also discuss and communicate information about the methods and procedures used by the real railroads and ways of most practically and realistically adapting them to the model world. So, if you like to operate the railroad you've created, this is a place to learn more and find others with similar interests.

We publish a quarterly magazine, [The Dispatcher's Office](#), which in addition to containing articles and information on railroad operations (both prototype and model), contains listings of operating layouts, sessions, and events that members are invited to attend.

[Back issues are available](#). In addition, the OPSIG web site serves as a clearinghouse for publicizing [regional operating events and meetings](#), where layouts are open for guest operations. We *Second Section* email newsletter on a regular basis.

Click the link for the OpSig website: <https://www.opsig.org/>



**Operations SIG**

@OperationsSIG · Nonprofit organization

[Send message](#)

The Operations SIG also has a **Facebook** page, just click the link: <https://www.facebook.com/OperationsSIG>



# WKR Update



We're wrapping-up the concrete plant upgrade on section 11 and the final phase is the addition of additional foliage.

(Left) This is the original look of section 11.

One of the nice aspects of lurking on Facebook is learning about new (or new to me) products. I saw some foliage mats, ordered a few, and they worked quite well.



(Above) This is the first round of new foliage and although I did it wrong (I did not understand the instructions until I saw a YouTube video), it did turn out better than it was.

(Below) A better view of the new foliage which is a combination of several products.





# WKR Update



(Above) “I liked the product so much; I bought the company.” I wish I could say that, but I did expand the project onto section 12 (part of the same scene). Originally we had a strip of “concrete” behind the unloading track, but that was unrealistic, so we changed it to the new foliage. Using the techniques gleaned from the [YouTube](#) video, and this area came out so much better.

(Below) We added the new foliage to the left of the silos as well.





# WKR Update



(This Page) The new foliage with the reinstalled backdrop on section 12.



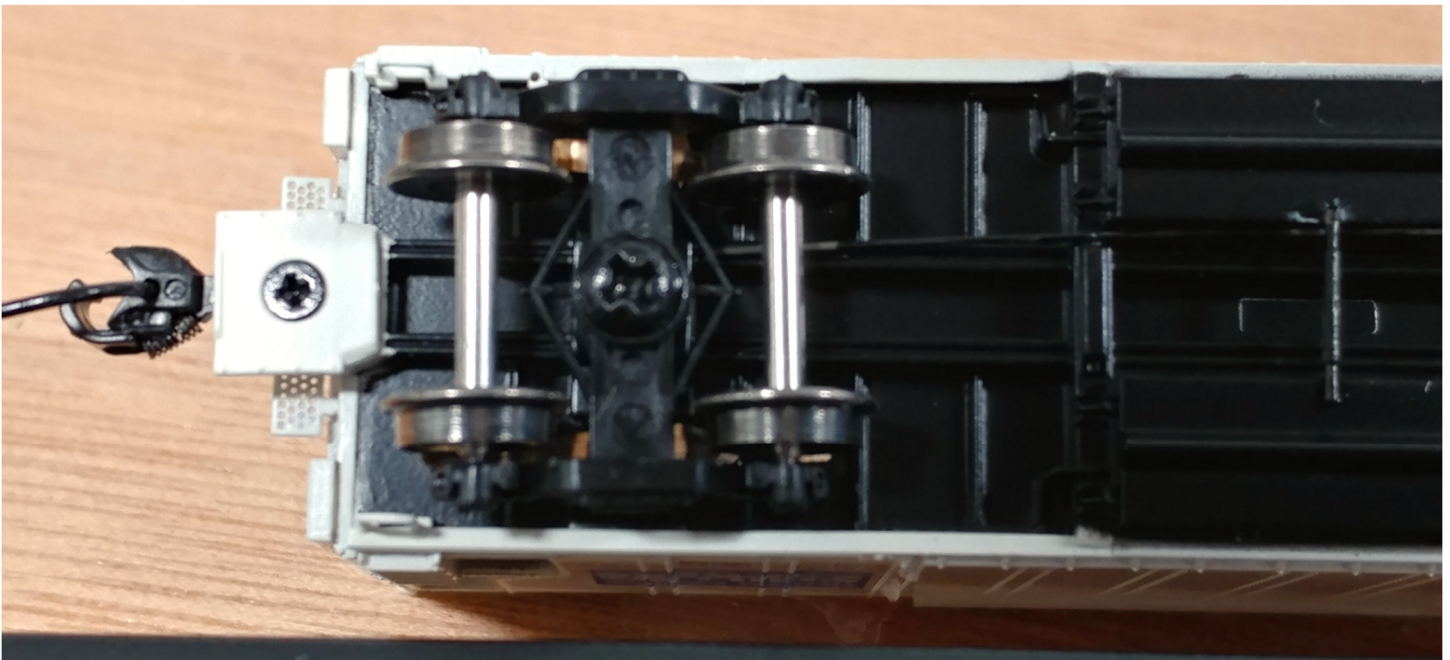


# WKR Update



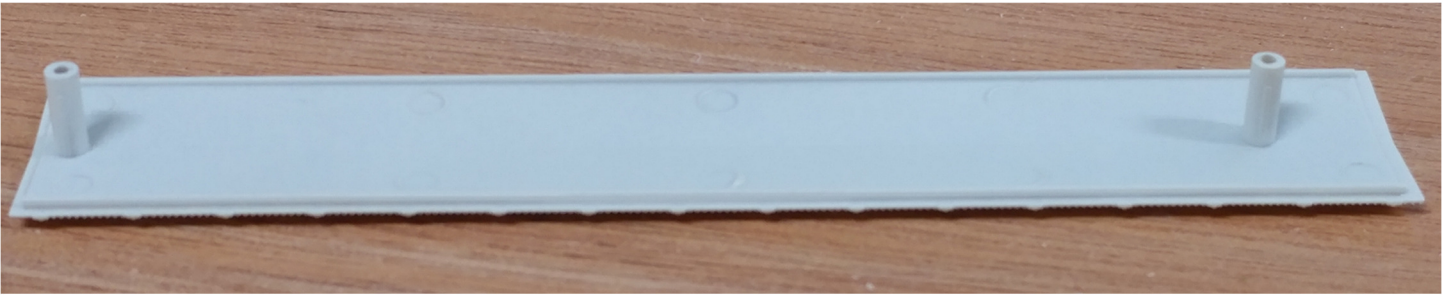
(Above) Early in the month, the WKR received its order of the new Athearn 57-foot mechanical reefers with sound. The purchasing department acquired six and all came out of the box ready to roll, except the one above. The truck on the left would only turn one way, so it went to the repair crew to find out why.

(Below) The offending truck from below. You can see the copper power pick up strips that ride on the tops of all wheels. This was a real mystery as the truck would swing only in one direction but was not hitting anything on the underside..



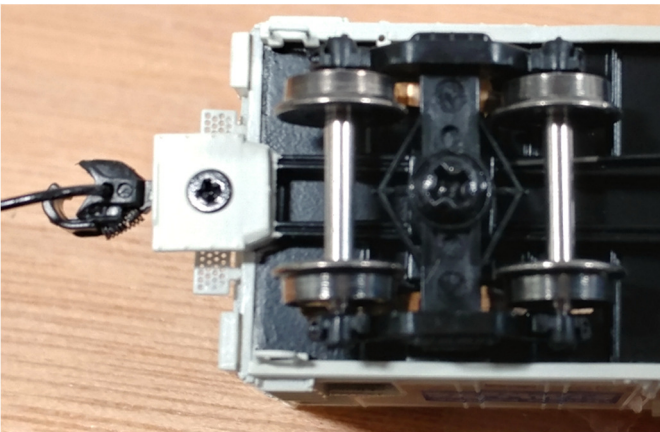


# WKR Update



(Above) When the repair crew could not find any problems from below, the next idea was to check on the inside. It was simple to discover that the roof pulls straight up and off.

(Below) This was a wonderful opportunity to snoop inside and see the inner workings of the sound unit. We discovered that the power is transferred through wires soldered to the copper pickup strips, so they run through small holes in the floor.



(Left) Since the wires running through the floor were not the problem, we had to dig deeper. Some of the cars had the bolster screw tightened down too tight which caused binding, which was remedied by loosening the screw.

We tried that to no avail. So, the next idea was to completely remove the screw and pull the truck out as far as the wires would permit. We still could not see the issue but eventually we spotted a tiny sliver of plastic on the edge of the bolster mount on the car floor.

Using an Xacto knife, this was quickly dispatched which turned out to be the corrective measure. The truck was remounted, the screw reinstalled, and everything worked fine. Mystery solved.





▶ **Start reading now**

Read the current issue online

**Get the current issue**

Click for more ways to read the current issue



Click to visit our premium web video channel

**Running Extra!**  
Subscribe to new mag

**Model Railroad Hobbyist Store**

Click to visit our online store ...



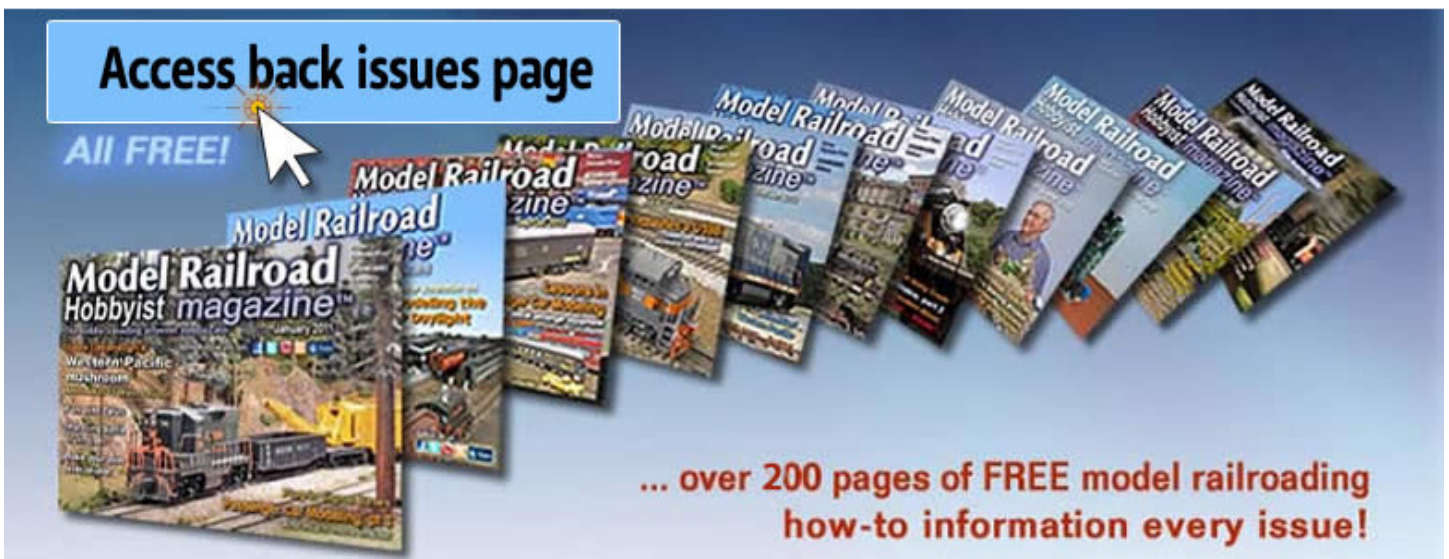
**July  
Running Extra:  
\$2.99**

**SUBSCRIBE  
and save  
80%!**

**Subscribe and save BIG**



Click the link to subscribe and start reading: <https://model-railroad-hobbyist.com/>







## We want to buy your stuff!

N Scale Supply is looking to buy collections, large and small, or just extra stuff you may have

### NEW EXPANDED RETAIL STORE HOURS

**MON-FRI 10AM to 6PM**  
**SAT 10AM to 4PM**

#### HOLIDAY SCHEDULE

OUR RETAIL STORE WILL BE CLOSED  
ON THE FOLLOWING DAYS

MON MAY 30	MEMORIAL DAY
MON JULY 4	INDEPENDENCE DAY
MON SEPT 5	LABOR DAY
THUR NOV 24	THANKSGIVING

N Scale Supply now features Z-scale engines from  
**American Z Line**

Click here for N Scale Supply: [N Scale Supply](http://NScaleSupply.com)



### RETAIL STORE ADDRESS

6060A WEST 55th AVENUE  
ARVADA, COLORADO 80002



**News & Info**

**Catalog**

**Search**

**Ordering Info**

**Pre-Owned  
Equipment**





# Rio Grande

## Modeling & Historical Society

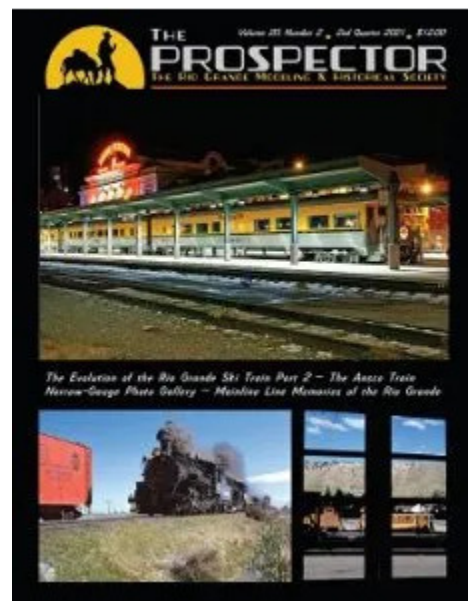
We invite you to **join** or **renewal** your membership in the RGM&HS and join over 400 other Rio Grande Enthusiasts from all over the world.

### All Members receive:

- One year (4 issue) subscription to *The Prospector*, the official magazine of the Society
- A subscription to the Society's e-mail newsletter, the Green Light.
- Members-only emails with advance notice of events, programs, and offers
- Special benefits and features in the Members-only section of the Society's website

RailPictures.Net - Image Copyright Bill Edgar

The RGM&HS publishes ***The Prospector***, our professionally produced and beautifully illustrated quarterly magazine featuring the finest work of historians and other experts on all aspects of Rio Grande Railroad. We make available individual issues and volume sets of the magazine for purchase from our website—from the current issue to back issues of ***The Prospector*** over the past 20 years back to Volume 1 which was first published in 2002.



Click this link for the RGM&HS website: [Rio Grande Modeling & Historical Society](https://www.rgmhs.org)

For the RGM&HS Facebook page, click here: <https://www.facebook.com/groups/rgmhs.org>





30 Day Free Trial

## Unlimited Digital Membership

All the best in modeling how-to and railroad news and history at your fingertips. Video series and workshops. Behind-the-scenes access. Exclusive deals. Thousands of magazine issues. Unlimited members get it all!

[Learn More](#)

## MEMBERSHIP BENEFITS

- ✓ All content on Trains.com from our family of brands, including NewsWire, Product Reviews, Track Plan Database and more!
- ✓ Unlimited Video Streaming of all new video series and workshops
- ✓ Full magazine archives from all five publications – that's more than 85 years of issues!
- ✓ Digitized Kalmbach Media books
- ✓ Live streaming events and virtual tours
- ✓ Online Q&As with our editors
- ✓ A weekly e-newsletter
- ✓ Live webcams
- ✓ Exclusive giveaways and discounts
- ✓ FREE Trains.com Unlimited t-shirt!
- ✓ And more!

Click the link to subscribe and start reading: [www.trains.com](http://www.trains.com)



# Date Book

## September 2022

17<sup>th</sup> & 18<sup>th</sup>  
Sat & Sun

**TECO (Train Expo Colorado) Train Show**  
<https://tecoshow.org/>

Colorado Springs, CO.

## October 2022

1<sup>st</sup> & 2<sup>nd</sup>  
Sat & Sun

**Wichita Toy train Club Train Show**  
<http://www.wichitatomytrainmuseum.org/club-shows-1.html>

Wichita, KS.

## November 2022

5<sup>th</sup> & 6<sup>th</sup>  
Sat & Sun

**New Dates**  
**Oklahoma City Train Show**  
Oklahoma State Fairgrounds [www.oklahomarailwaymuseum.org](http://www.oklahomarailwaymuseum.org)

Oklahoma City, OK

**NO Dodge City Show**

## December 2022

3<sup>rd</sup> & 4<sup>th</sup>  
Sat & Sun

**Great Train Show**  
Overland Park Convention Center [trainshow.com](http://trainshow.com)

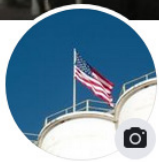
Overland Park, MO.



The Western Kansas  
Division has a **MeWe** page.

Click the link to follow the action: [Western Kansas Division](#)





**Western Kansas Division**

Create @Username · ★ 5 5 reviews · Organization

+ Add a button

Follow the Western Kansas Division on Facebook: [Western Kansas Division](#)





The Bruce Crew at Jerry's home in McPherson, KS. (Left to Right) Kelly Bruce, Larry Kitzel, Leroy Schmidt (rear). Hector Coss, and Jerry Bruce.

## The *Main Line*

Publisher & Editor: Robert A. Simmons

The newsletter of the Western Kansas Division is published monthly for no charge by Robert A. Simmons, Division Superintendent / Director

Copyright 2022, by Robert A. Simmons, all rights reserved

If you have a change of e-mail address, or no longer wish to receive the newsletter, please contact Robert Simmons

[Trainman55@hotmail.com](mailto:Trainman55@hotmail.com) or P.O. Box 157 – Dodge City, KS. 67801 or call (620) 521-3591

Please send all inquiries, ideas, or submissions to: [trainman55@hotmail.com](mailto:trainman55@hotmail.com)