



The

# Main Line

February 2022



National Model Railroad Association

Mid-Continent Region

The Monthly publication of the



**Western Kansas Division**



On The Cover: A scene from the Bruce Family N-scale layout on display at the McPherson Train Show.

In this issue:

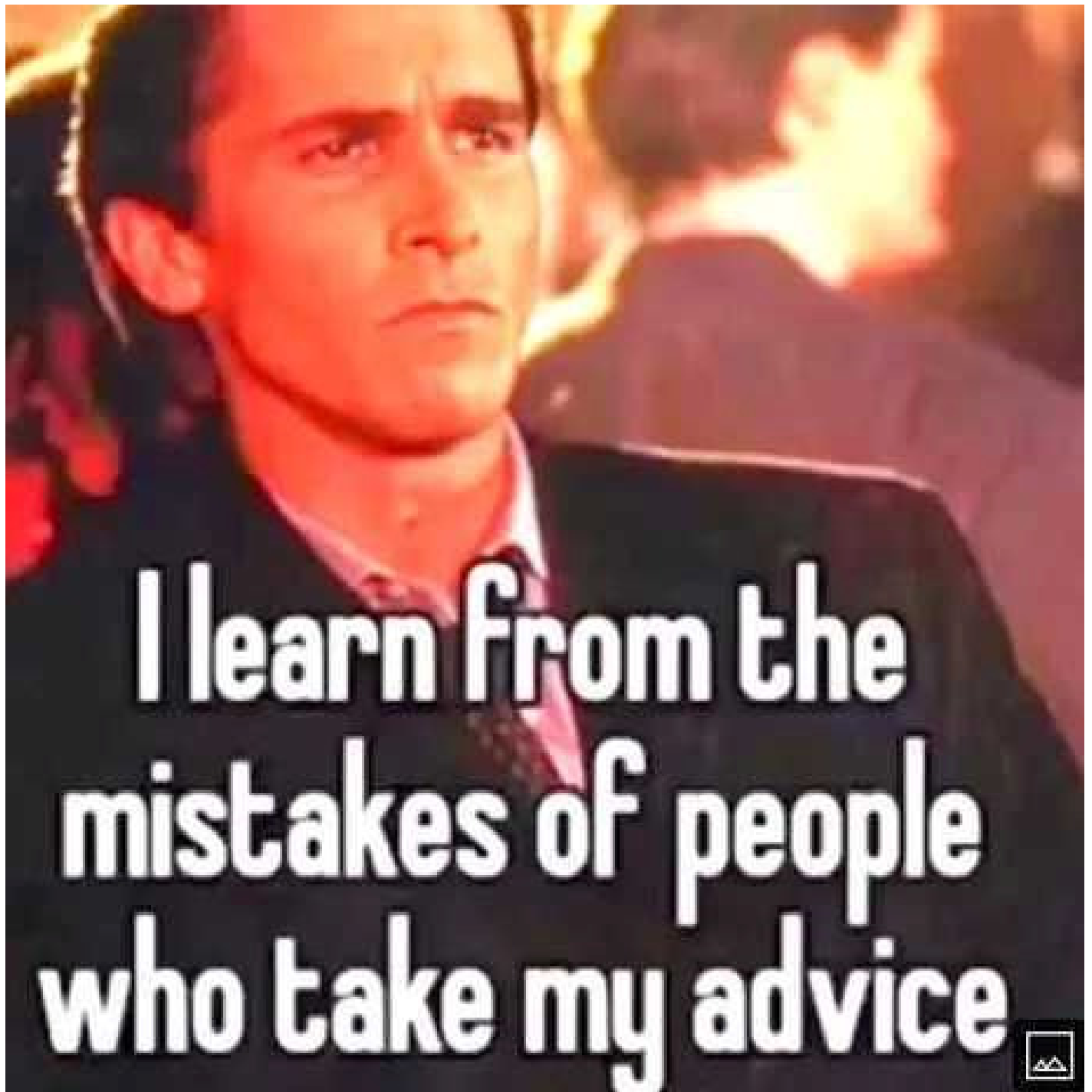
Editor's Musings.....Page 2

Real Deal.....Page 8

McPherson train Show.....Page 28

WKR Update.....Page 38

Date Book.....Page 43



The Operations Special Interest Group (SIG) has a [Facebook](https://www.facebook.com/OperationsSIG) page...check it out:

<https://www.facebook.com/OperationsSIG>



**Operations SIG**

@OperationsSIG · Nonprofit organization

[Send message](#)

Hi! Please let us know how we can help.

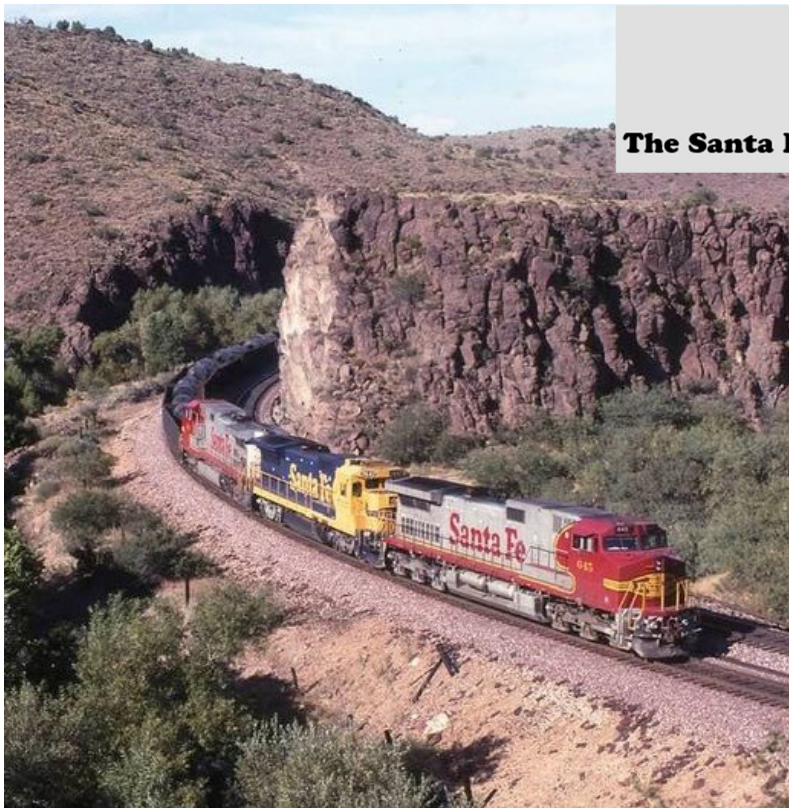
# Editor's Musings

So far, 2022 has not been kind to Kathy and me but I hold out hope it can only get better. For a number of reasons, it appears that the WKR layout and I will miss out on most of the Spring's increasingly busy train show season, at least it appears as of now the Covid issue is winding down. As they say in the auto racing world, "There's always next season/year."

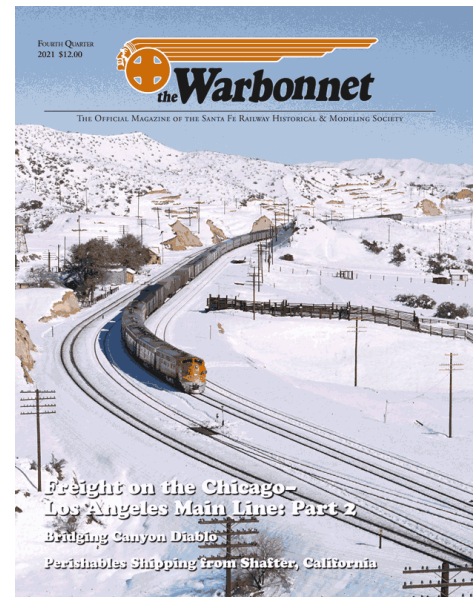
While I will miss visiting with people at the shows, I can use the time to finish the concrete plant and continue to make repairs and upgrades to the Western Kansas Rails layout. I can also use the time to do research on the Missouri Pacific and envision the portion I wish to model on a new home layout.

There are several options, Jim Senese of Tulsa modeled a portion of Kansas City that featured a lot of switching, I could model the entire MoPac line through Kansas, I could also do a fictionalized version of the MoPac as I did on my last home layout. Just as a reminder of the layout, the Op Session Primer I filmed on the MoPac layout has over 5.7-thousand views, <https://www.youtube.com/watch?v=6S86PxMwd3Y> on YouTube.

Who knows what the future holds...I hope it only gets better.



**The Santa Fe Railway Historical and Modeling Society**



The Santa Fe Railway Historical & Modeling Society is an independent non-profit corporation devoted to preserving, studying, and sharing information about the former Santa Fe Railway, from its rich history and fascinating operations to its distinctive equipment and facilities.

The Society offers exceptional publications on the history and modeling of the Santa Fe. From its flagship quarterly magazine, **The Warbonnet**, to its comprehensive books on history, motive power, rolling stock and modeling, the Society is the definitive and authoritative source on all things Santa Fe.

Check them out today: <https://sfrhms.org/>

# Gateway 2022

Gateway Rail Productions LLC



Sun, August 07, 2022 @ 08:00 AM — Sat, August 13, 2022 @ 06:00 PM (CDT)



The 2022 NMRA annual convention is August 7-13. The event is being held at the St Louis, Marriott Grand Hotel. Registrants will receive one free self-driving tour.

Registration: **Open**

Location

## Event Dates



8:00 AM to 6:00 PM (CDT)

[Save to my calendar](#)

## Registration Closes

AUGUST 07, 2022 @ 6:00 PM



## Address

Marriott Grand, St Louis  
800 Washington Ave, St Louis, MO  
Saint Louis, MO USA

## BECOME A TRAINS.COM UNLIMITED MEMBER



### START YOUR TRAINS.COM UNLIMITED MEMBERSHIP TODAY TO UNLOCK EXCLUSIVE MEMBER-ONLY BENEFITS!

- All content on Trains.com from our family of brands, including NewsWire, Product Reviews, Track Plan Database and more!
- Unlimited Video Streaming of all new video series and workshops
- Full magazine archives from all five publications—that's more than 85 years of issues!
- Digitized Kalmbach Media books
- Live streaming events and virtual tours
- Online Q&As with our editors
- A weekly e-newsletter
- Live webcams
- Exclusive giveaways and discounts
- FREE Trains.com Unlimited t-shirt!
- AND MORE!

START YOUR 30-DAY FREE TRIAL



**Model  
Railroader**

**video  
PLUS**

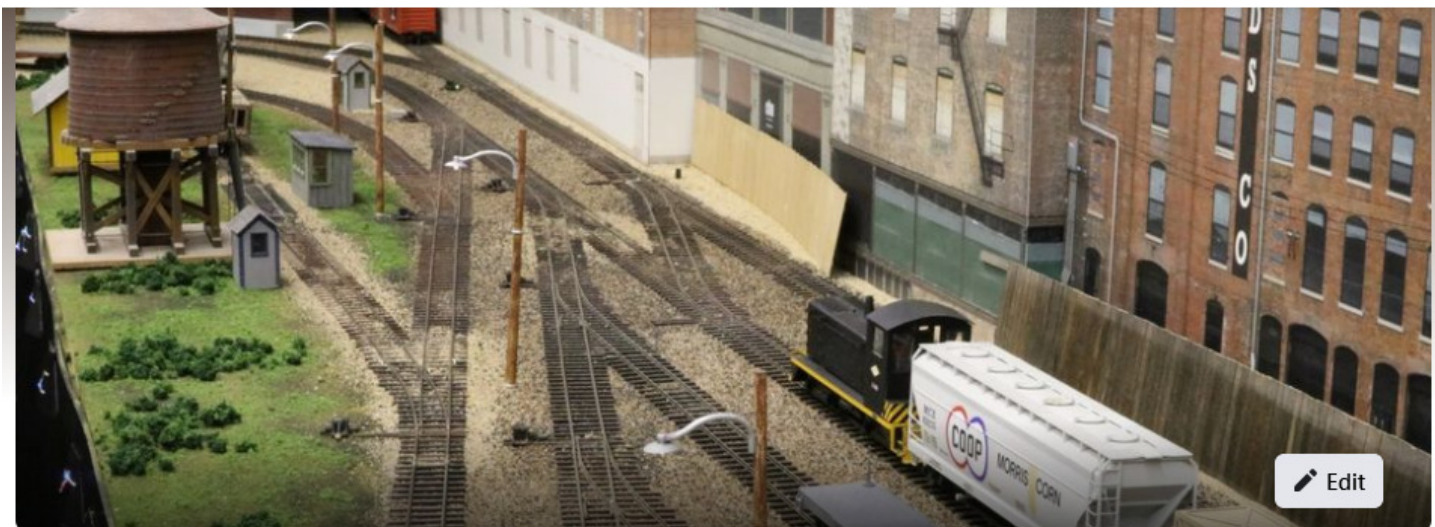
**CLASSIC TOY  
TRAINS**

**Classic Trains**

**Garden  
RAILWAYS**

**Trains**

THE BEST IN MODELING & RAILROADS • ALL IN ONE STOP!



## Mid-Continent Region, NMRA

Public group · 306 members

Joined

+ Invite



Gene Tacey created an online event for the group.

1h



## 28<sup>th</sup> Annual Train Show

SAT, APR 9 - APR 10

28th Annual Train Show

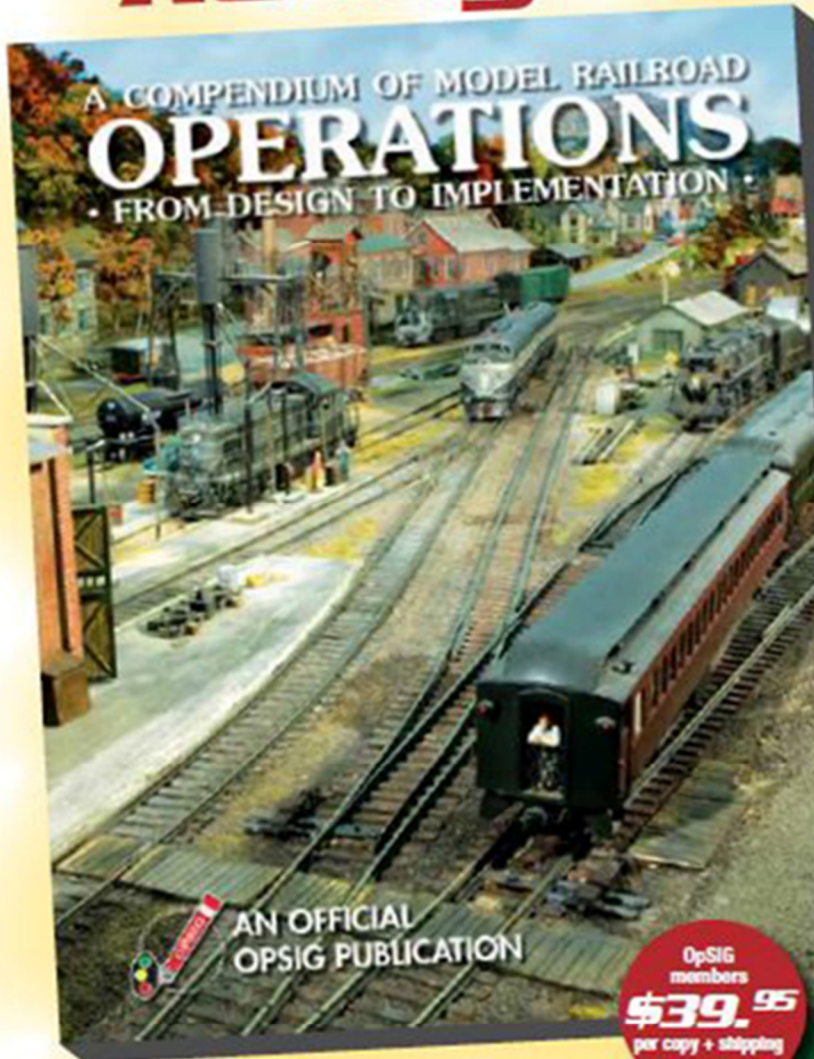
Created for Mid-Continent Region, NMRA

Interested

If you're a member of the **Mid-Continent Region, NMRA**, feel free to post on the [Facebook](#) page; train shows, your layout, your latest project, meetings, anything related to model railroading in our Region...

Check it out: <https://www.facebook.com/groups/1851848998468077>

Dispatcher to OpSIG Publication No. 2, you're ...  
**Ready to Roll!**



All model railroaders, whether expert or beginner, will find a wealth of useful information in the OpSIG's second publication, **A Compendium of Model Railroad Operations - From Design to Implementation**. A complete guide to all things operations, our latest offering covers every aspect of prototype operations and how to apply them to your model railroad—from design and staffing to yards and paperwork, from communications and signals to dispatching and car forwarding—in 310 full-color pages. Written by ten of your fellow modelers and professionals, **The Compendium** contains more than 350 photos, 120 illustrations, and countless tips, pointers, suggestions, and prototype information to help guide you on your journey. A must for any modeler interested in prototype operations, add it to your library today!

OpSIG  
members  
**\$39.95**  
per copy + shipping

Non-  
members  
**\$49.95**  
per copy + shipping

Shipping: US (\$8)  
Canada/Mexico (\$21)  
Overseas (\$28)

For shipping rates on multiple books,  
as well as better international shipping,  
please contact Steve Benezra.

**To Order:** Please mail a check or money order, payable to OpSIG, with number of copies and your mailing address, phone number, and e-mail to:

Steve Benezra  
2737 Thistle Trail  
Hillsborough, NC 27278-9302  
Opsig.editor@gmail.com

For Paypal orders, please add \$1 to the cost of the book and send to [OPERSIG@Yahoo.com](mailto:OPERSIG@Yahoo.com). Provide your mailing address and telephone number in the subject box.

The OpSIG is a 501(c)3 non-profit corporation. For information on how to join the OpSIG, please visit [www.opsig.org](http://www.opsig.org).



## N Scale New Arrivals



Micro-Trains Line  
11500082 - 65' 100  
Ton Log Car Georgia  
Pacific (GPSX) 240 - N  
Scale



Micro-Trains Line  
09400700 - 3 Bay  
Covered Hopper w/  
Elongated Hatches  
Farmrail (GNBC) 1101  
- N Scale



Micro-Trains Line  
07700280 - 50'  
Standard Box Car,  
Single Door no  
Roofwalk Rock Island  
(ROCK) 50464 - N  
Scale



Micro-Trains Line  
11500081 - 65' 100  
Ton Log Car Georgia  
Pacific (GPSX) 229 - N  
Scale



Broadway Limited  
6203 - SD40-2 w/ DCC  
& Sound Missouri  
Pacific (MP) 3131 - N  
Scale



Micro-Trains Line  
14400840 - 6 Axle  
Heavyweight  
Modernized Business  
Car Chicago &  
Northwestern (CNW)  
400 - N Scale



Micro-Trains Line  
12500053 - 43' Rapid  
Discharge Hopper  
Chesapeake & Ohio  
(C&O) 45014 - N Scale



Micro-Trains Line  
14400830 - 4 Axle  
Heavyweight  
Modernized Business  
Car Pennsylvania  
(PRR) 120 - N Scale

## HO Scale New Arrivals



Athearn Genesis  
65537 - EMD GP39-2  
CSX (CSXT) 4313 - HO  
Scale



Athearn RTR 97025 -  
30' 8k Gallon Beer  
Tank Car Union Tank  
Car Co (UTLX) 78506 -  
HO Scale



Athearn RTR 15521 -  
45' Trailer Penner  
6604 - HO Scale



Athearn RTR 72039 -  
EMD SD60 Chicago &  
Northwestern (CNW)  
8027 - HO Scale



Athearn RTR 16074 -  
40' Fruehauf Reefer  
Trailer Intermodal  
Systems Inc (IMSZ)  
470136 - HO Scale



Athearn RTR 72036 -  
EMD SD60 Electro-  
Motive Diesel  
Demonstrator (EMDX)  
2 - HO Scale



Athearn Genesis  
65524 - EMD GP39-2  
Reading (RDG) 3407 -  
HO Scale



Athearn RTR 16084 -  
40' Fruehauf Reefer  
Trailer Unlettered -  
HO Scale

## Our Story

In 2011, Midwest Model Railroad started with the idea of making this hobby more accessible to everyone. Since day one we have strived to keep our operating cost to a bare minimum and pass on those savings to you. As of this summer, 2021, we are succeeding in offering some of the best prices anywhere in the hobby, with one of the largest lists of **new** inventory in the United States.

Some great side effects of this goal have been the creation of real time inventory on our website and a turnaround time of **just one day** between purchase and shipping. We are centrally located in Kansas City, MO meaning orders to any corner of the United States arrive with in just a few days.

As you explore our store, you will find we deal in more than just model railroad. Board Games, slot cars, and much, much more coming with the new expansion, finding just what you are looking for is simple and efficient.

## Customer Comments

"Ordered on Saturday, even picked the cheapest shipping option as I was in no great hurry. Order arrived on Thursday morning! Neatly packed and damage free."

"Within an hour of placing my order, it was processed and I had a tracking number. Quickest turnaround I've seen on an order!"

"With the order I just received, I placed it this past Saturday morning and received notification that my order had shipped that same afternoon!"

**Remember: Reach out to us during business hours for any questions and concerns. We are always here to answer each and every question you might have.**

## Now with 15,000 sqft!

Now with 15,000 sqft, Midwest is one of, if not, the largest model train stores in the country.



Click on the link: <https://midwestmodelrr.com/>

# Real Deal



Jerry Bruce of McPherson, Kansas has a sales route through the Northern part of Kansas and is able to catch quite a bit of train traffic. (Above) KYLE 3098 is a EMD SD45T-2 that began life as Southern Pacific 9245 in May of 1972.

(Right) KYLE 5005 is a 5000-HP MK Rail designated MK50-3 and powered by a Caterpillar V12 diesel engine.



Thanks for the photos, Jerry!

# Real Deal



# Real Deal



During the first week of January, on two separate days, I caught shipments of Boeing 737-MAX 8 fuselages. The first day there were two, and on the second day there were three. The fuselages are constructed at the Boeing plant in Wichita, Kansas, then shipped via BNSF to Seattle, Washington for final assembly.



(Page 10)



(Page 10)

# Real Deal



# Real Deal



(Above) BNSF 3122 was shoving cars around the Dodge City yard. The BNSF 3122 started life in July of 1985 as Burlington Northern 3122 and is an EMD GP50.

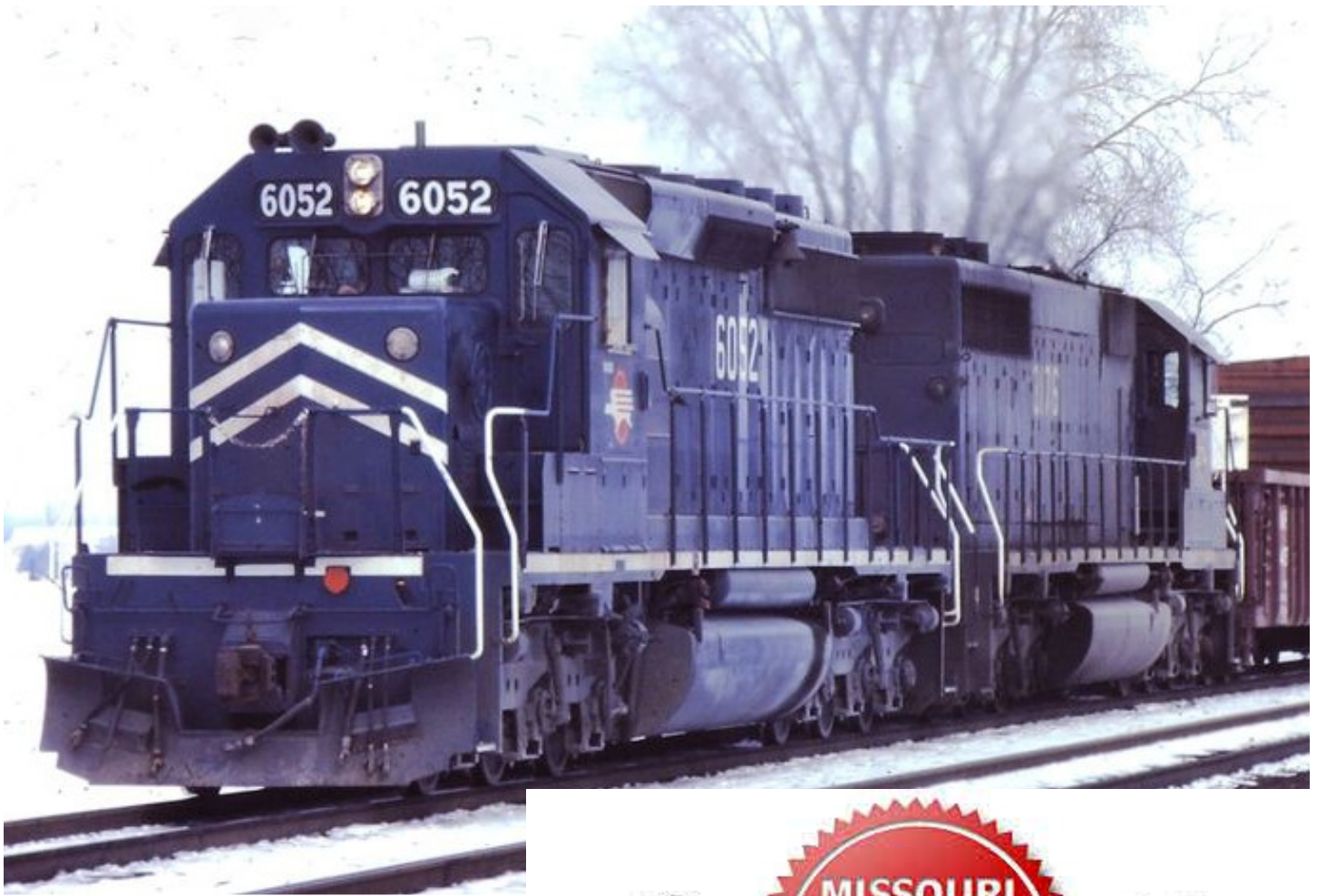
(Below) Looking at a fuselage facing South (into the Sun).



I bought a new model kit  
and my wife asked me,



'Are you gonna sell  
some of you other kits'



**Our mission is to preserve and promote the heritage of the Missouri Pacific Railroad and its affiliates. This includes the Texas & Pacific, Chicago & Eastern Illinois, Kansas Oklahoma & Gulf, Alton & Southern and many other roads that were part of the MP family.**



## **New Member Incentive**

**In addition to four issues of "The Eagle" magazine, a yearly calendar (delivered in the fall for following year), discounts at the Company Store, and full access to Archives Image Gallery on our website; new members will also receive a welcome packet that includes 12 assorted (our choice) back issues of "The Eagle" magazine.**

Click the link: <http://www.mopac.org/>






Home
Conventions
Region Info
Divisions
Resources
Ask an Expert!
Operation Lifesaver

### Announcements

- Thanks to Robert Simmons for making the [January 2022 issue of the Main Line](#) available!
- Thanks to Jim Marlett for making the [January/February 2022 issue of Trails, Rails, & Tales](#) available!

The First Quarter 2022 issue of the [Caboose Kibitzer](#) is available. Thanks to Ray Brady for his work and please send him your articles!

Thanks to Ray Brady for

## Welcome to the Mid-Continent Region of the National Model Railroad Association

**A 501(c)3 non-profit corporation**, MCoR includes the southern half of the state of Iowa, portions of Illinois, and the entire states of Arkansas, Oklahoma, Missouri, Kansas and Nebraska. Since 1990, MCoR's leadership has fostered a strong program of developing local divisions with the purpose of bringing the potential for NMRA activity and involvement to a community near you. From only two divisions in 1990 located in metropolitan areas, MCoR now has well over a dozen divisions and over 900 members.

### Follow Us On Facebook

The Mid-Continent Region now has a [Facebook Group](#) (Thanks Bob!). Please check it out and friend!!

If you have an event you want mentioned here or in the [Calendar](#), please send it

### Upcoming Events

- The winter 2022 board meeting will be held from 9-10 am Central Standard Time (that is 8-9 am for our members in the mountain time zone) on 1/8/2022. Per the change adopted during the 2021 winter board meeting, this will be a remote call. Members who wish to attend should contact their local board member for further information.

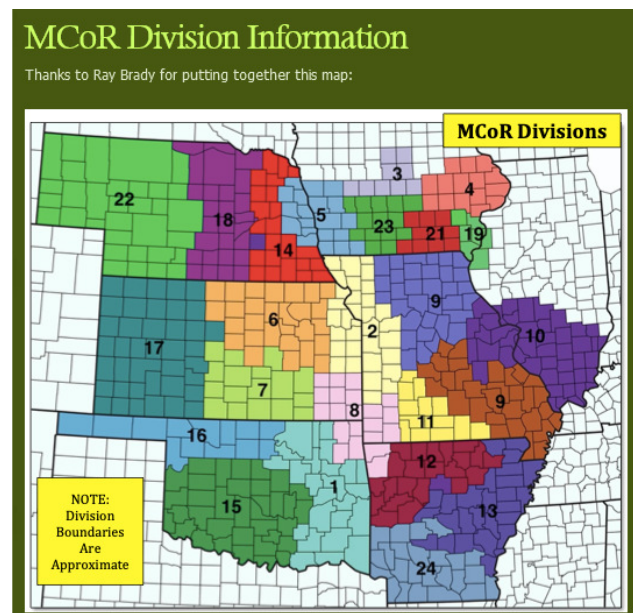
From March 18th-20th the Indian Nations Division of the NMRA is hosting the **Layout, Design, Operation (LDOP) weekend**. Three days of operations on 16 different layouts on Friday and Saturday Evening and Sunday Morning.

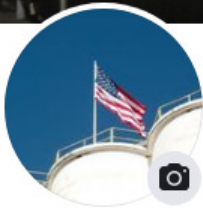
Registration and sign in from 7:30 to 8:00 am at the Akdar Shrine Center 2808 S Sheridan Road, Tulsa, OK 74129. Guest speakers on Saturday from 8:15 a.m. to 4:00 p.m.

For additional information visit [www.tulsanmra.org](http://www.tulsanmra.org) for upcoming registration, hotel, clinic, and layout operating information.

You can find anything about the Mid-Continent Region such as Division information by clicking on the link:

<http://www.mcor-nmra.org/>





## Western Kansas Division

Create @Username · ★ 5 (5 reviews) · Organization

+ Add a button

Home

About

Photos

Events

More ▾

Promote

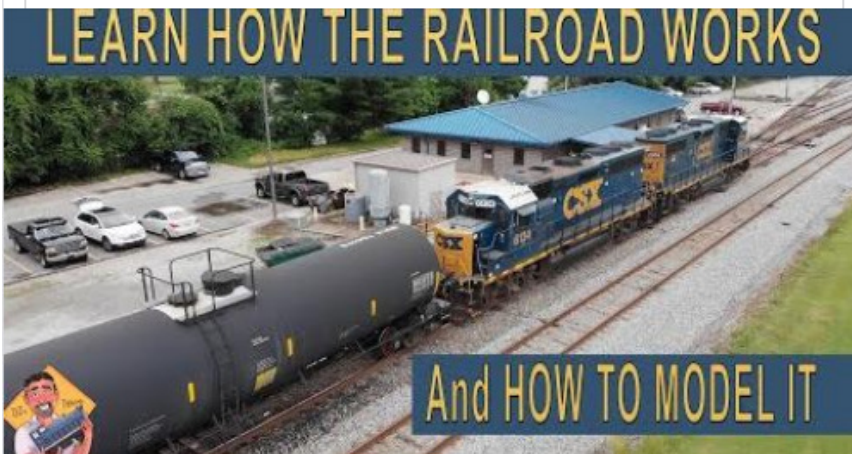
Search

More options



Ed McNamara ▸ CMRR Free-moN

January 19 at 1:50 AM · 🌐



YOUTUBE.COM

**HOW TO MAKE A MODEL RAILROAD MORE REALISTIC  
from an ENGINEER!**

140

People reached

9

Engagements

—

Distribution score

Boost unavailable

Check the Western Kansas Division [Facebook](#) page to follow the activities of the Division, plus modeling tips, train show info and a lot more.

Just click on the link and bookmark:

<https://www.facebook.com/Western-Kansas-Division-592835177514577>

**NEW EXPANDED  
RETAIL STORE HOURS**

**MON-FRI 10am to 6pm  
SAT 10am to 4pm**

SHOWROOM WILL BE CLOSED ON

- SATURDAY DEC 25TH
- SATURDAY JAN 1ST

NORMAL HOURS ALL OTHER DAYS  
THROUGH THE HOLIDAYS

We are located at:

6060A West 55th Ave.  
Arvada, Co. 80002

NOTE WE HAVE RECENTLY MOVED  
SAME BUILDING BUT NOW OUR  
DOOR IS ON THE OPPOSITE SIDE  
WEST SIDE TOWARDS THE STREET



Click to navigate to...

**News & Info**

**Catalog**

**Search**

**Ordering Info**

**Pre-Owned  
Equipment**



Check them out today: <https://www.nscalesupply.com/>



**We want to buy your stuff!**

N Scale Supply is looking to buy collections,  
large and small, or just extra stuff you may have  
[click for details](#)



## About N Scale Modular Railroading

The building of a module is not difficult. Building a module has the distinct advantage of "forcing" the builder to do all the phases of layout building, without having to do so much of one phase that they get "fed up" with it, as can happen when building a large home layout. So often the scenery doesn't get built or the track work is never made to work right, or some other building phase is neglected. Getting a module ready for a scheduled meet will do wonders for a builder's speed and concentration! Another advantage is that the module can be turned on its side or upside down, making working on it much easier, providing better lighting, and making it possible to avoid hot solder drips. The module can be brought to another part of the house where the rest of the family is or taken outside when a smelly job needs doing. The small footprint also allows for experimentation with scenery techniques.

Detailed information about [NTRAK](#) and [T-TRAK](#) modules as well as publications of interest to N scaler is available throughout this website and for download and at the [Store](#).

## Become a member - join us now!

### Membership in NRail includes:

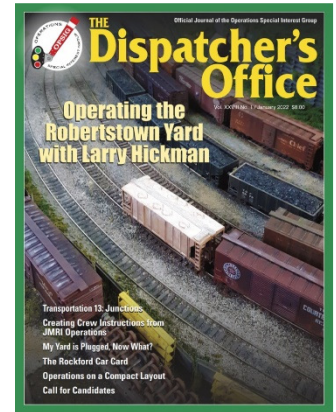
- a year of the Newsletter (6 issues)
- support of the National T-TRAK Layout
- support of NTRAK layouts at major train shows
- access to the Members Only section of NRail.org
- discount on merchandise in the [NRail store](#)

Click the link for more info: <https://nrail.org/>



The principal purpose of the Operations Special Interest Group (OPSIG) is to discuss, develop and disseminate ways of operating model railroads to realistically emulate practices of the prototype. This includes sharing information on various methods of generating, moving and controlling traffic to heighten the feeling that our models are an active and integral part of the national rail transportation network, serving shippers and consignees throughout the nation. We also discuss and communicate information about the methods and procedures used by the real railroads and ways of most practically and realistically adapting them to the model world. So, if you like to operate the railroad you've created, this is a place to learn more and find others with similar interests.

We publish a quarterly magazine, [\*The Dispatcher's Office\*](#), which in addition to containing articles and information on railroad operations (both prototype and model), contains listings of operating layouts, sessions, and events that members are invited to attend. [Back issues are available](#). In addition, the OPSIG web site serves as a clearinghouse for publicizing [regional operating events and meetings](#), where layouts are open for guest operations. We also have a [Facebook page](#) and send out the *Second Section* email newsletter on a regular basis.



We are an official special interest group recognized by the **National Model Railroad Association**. While NMRA membership is encouraged, it is not required to join the Operations SIG.



As part of your yearly membership, you'll receive four quarterly issues of *The Dispatcher's Office*, our operations-focused publication. *The Dispatcher's Office* is available as either a digital download or a mailed printed copy. As a print subscriber, you'll also get access to the digital copy. In addition, all members have complete access to 30+ years of our digital back catalog at no additional charge as long as they remain members of the OpSIG.

Click the link: <https://www.opsig.org/>

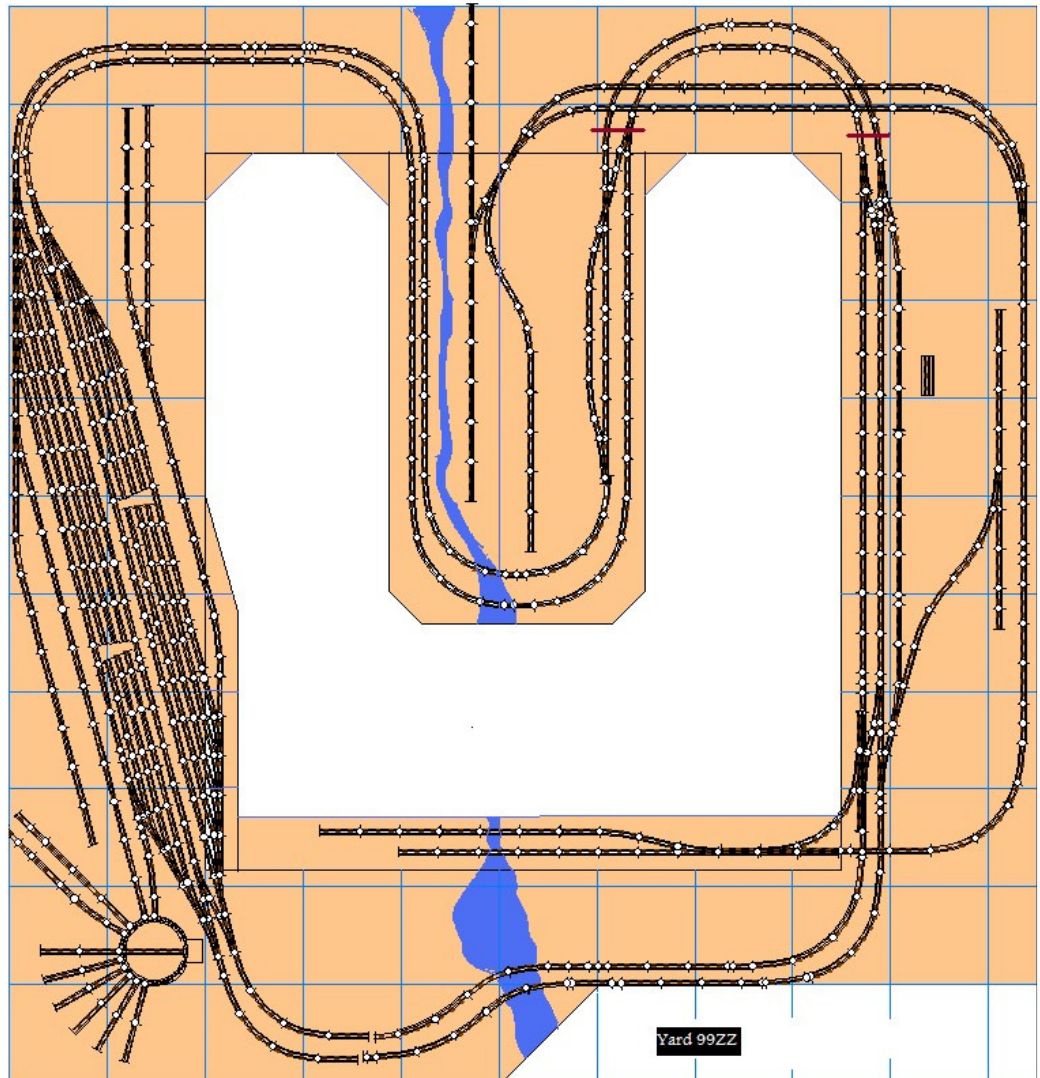
# End of the Line

I recently received an e-mail from **Harry Moos** of Hays, Kansas.

"I'm afraid I've come to the end of my model railroading days. Since my wife died, I just don't seem to have the interest or energy for it. When I tried to build a new kit before Christmas, my hands shake too much, and I ruined it. Even with magnification, my eyesight is no longer up to it either.

Therefore, if any club or individual would be interested in purchasing the whole setup, I would like to sell it so my daughter will not have to deal with it when she settles my estate. I have over \$4,000+ of rolling stock, engines, nickel track & switches, bridges and structures -- nearly all Union Pacific. I would entertain offers for the entire inventory including some unbuilt kits and scenery materials. They would have to come here and disassemble the unit. Benchwork included if they want it. I have pictures and a Microsoft database of inventory as well for anyone interested. I'll include a picture of the track plan that will give an idea of the layout."

This would be a great starter layout for a young family. You can e-mail me, and I will pass the information on to Harry. [Trainman55@hotmail.com](mailto:Trainman55@hotmail.com)



# End of the Line



(Both) Pictures I took of Harry's layout...





Robert Simmons

806 subscribers

CUSTOMIZE CHANNEL

MANAGE VIDEOS

HOME

VIDEOS

PLAYLISTS

COMMUNITY

CHANNELS

ABOUT



Uploads ▶ PLAY ALL



Merry Christmas from the Western Kansas Division,...

66 views • 4 weeks ago



New, N-scale, Scale Trains Autoracks 12/13/21

573 views • 1 month ago



BLI Loco Track Test

340 views • 1 month ago



WKR Quick Set Up

145 views • 1 month ago



Dodge City, KS. Train Show 2021 - Free-Mo modules by...

73 views • 1 month ago



Dodge City, KS. Train Show 2021 - N-Trak layout by...

91 views • 2 months ago

The **Western Kansas Division** has a **YouTube** page hosted by Robert Simmons. Videos include modeling tips, layout tours, operations, and more. Click on the link: [https://www.youtube.com/channel/UC9EPv8cQ04rRGAYts-734jw?view\\_as=subscriber](https://www.youtube.com/channel/UC9EPv8cQ04rRGAYts-734jw?view_as=subscriber)





The **Friends of the Burlington Northern Railroad (FOBNR)** historical society was incorporated in the state of Idaho on January 3, 1993. It was chartered to gather, preserve, and share information about the history and the current

operations of the Burlington Northern Railroad (see our mission statement below). The group began with about 140 members absorbed from the Burlington Northern Historical Society; an un-incorporated interim organization interested in studying the history of the Burlington Northern Railroad. In 1996, following the merger between Burlington Northern and Santa Fe, the group voted to follow the Burlington Northern from 1970 to 1995 and the BNSF from 1995 to the present. Then in 2018 we added coverage of the Montana Rail Link.

The Group's quarterly publication, [The BN Expediter](#), is the voice of the organization that shares news about the group's activities, BN historical data, and current operations of the railroad. It is a 24-page all-color publication and will grow even larger as the society grows and more members contribute more information.

We are over 200 members, from all over the United States and several foreign countries. As with any organization, its true success is measured by its continued, sustained membership. And, to continue its endeavors, the Friends of the Burlington Northern Railroad need member participation and support. Membership dues run per calendar year (January through December). Please consider joining or renewing your [membership](#) in the Friends of the Burlington Northern Railroad.



Click the link: <https://fobnr.org/>

on March 10, 1876  
Alexander Graham Bell  
makes the first phone call ever.



and moments later he was notified  
that his car's extended warranty  
had expired.



## Western Kansas Division, NMRA

16 followers

Posts

Photos/Videos

About

Analytics

Schedule

Notifications <sup>2</sup>

Settings



Share a post with your followers

DS

Pages

Events

MeWe

Search Members, Groups, etc.



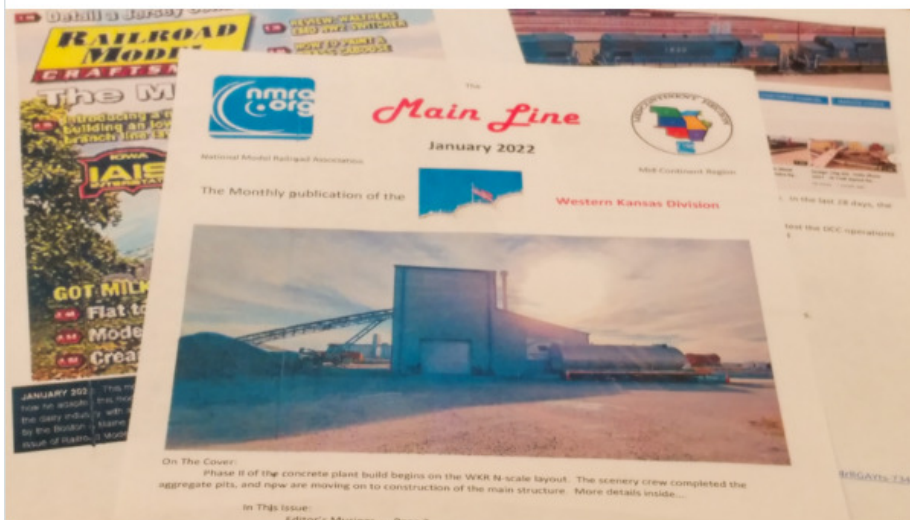
MeWe Store



Published by ROBERT Simmons · 23 days ago

1/1/22

It's Here! The January issue of the Main Line. Just click on the link for your free PDF copy:  
[https://www.dropbox.com/s/mcuc90yk17h73ta/January 2022.pdf?dl=0](https://www.dropbox.com/s/mcuc90yk17h73ta/January%202022.pdf?dl=0)



Western Kansas Division, NMRA Magazine

EDIT

Notifications

#Tags

Photos/Videos



Jim Lane, William McCabe and 1 other emojied your link:

"1/1/22

It's Here! The January issue of the Main..."



😊 3

© 15 days ago



Jonathan Drawbond followed your page  
 © 24 days ago



Greg Amer, William McCabe and 1 other emojied your photos: "12/8/21

You can check out the Western Kansas Division MeWe page, just Click the link:

<https://mewe.com/p/westernkansasdivisionnmra>

# Something New

## Model Railroading Community

Anything related to model railroading

Hobbies

HOT

NEW

u/MoPac1 • 1w ago • model-railroading

### New LED street lights installed on the city scene...N-scale



1 0 Share

There is a new social media page, called **Retalk**, and the Western Kansas Division is there under the heading of Model Railroading.

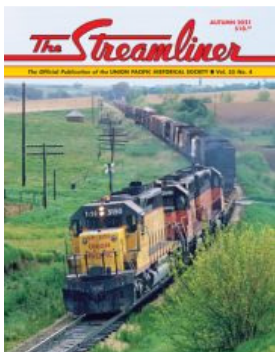
Click the link: <https://retalk.com/c/model-railroading>



[CLICK HERE FOR CONVENTION UPDATES](#)



the **Union Pacific Historical Society**, founded in 1984, is an independent, non-profit organization dedicated to preserving and sharing the history of the Union Pacific Railroad. As of the beginning of 2016, the Society has about 1,900 members. Historians, railfans, employees, and modelers have found the UPHS to be a matchless source of accurate and in-depth material concerning historical operations, traffic, motive power, rolling stock and facilities of the Union Pacific and predecessor companies. Railroad employees, managers, and retirees are welcome.



**Autumn issue of *The Streamliner* available now!** – In this issue Rob Leachman details Union Pacific's run-through operations with the Iowa lines and explains how these strategic partnerships eventually led to UP becoming Iowa's largest railroad. Jeff Asay provides a brief overview of UP's Los Angeles poultry dock and the unique cars used for shipping live chickens. Jim Griffiths concludes the issue with a personal account of a day of photography on the OSL with his father, Hank Griffiths. This issue is available now in the [company store!](#)

Click on the link: <http://uphs.org/>

# McPherson Train Show 2022



On January 8<sup>th</sup> & 9<sup>th</sup>, McPherson Kansas hosted a new model train show. The co-sponsors were the McPherson County Maker Space and the Convention Visitors Bureau of McPherson. The local train club hosted a show for years in the past, now this new group is beginning again. The word is it was a good show that was well attended, and they are planning on doing it again next year. I was not able to attend, but perhaps next year. I would like to thank Spring Creek Model Trains for the photos.



# McPherson Train Show 2022



# McPherson Train Show 2022



# McPherson Train Show 2022





“You remember all of the train show dates and hours within a 200 mile radius but you have to look up when our anniversary is?”

**FEBRUARY 2022:** We're headed back to upstate New York in the mid-1990s to follow a local short line interchanging with Conrail at Onondaga Yard outside of Syracuse, N.Y. The Minoa & Euclid only has a handful of customers, but the round trip to the interchange is anything but simple. Rick DeCandido explains how he set up staging for his freelanced New York Central steam era engine terminal layout, while Steve Lasher turns an old Tyco kit into a detailed model of an interlocking tower. Will Lawrence kitbashes a modern sodium chlorate car, while Charls Gendron paints and details a VIA Rail P42 in a colorful design. Enjoy modeling tips and techniques, product news and reviews, and more in the February issue of Railroad Model Craftsman!

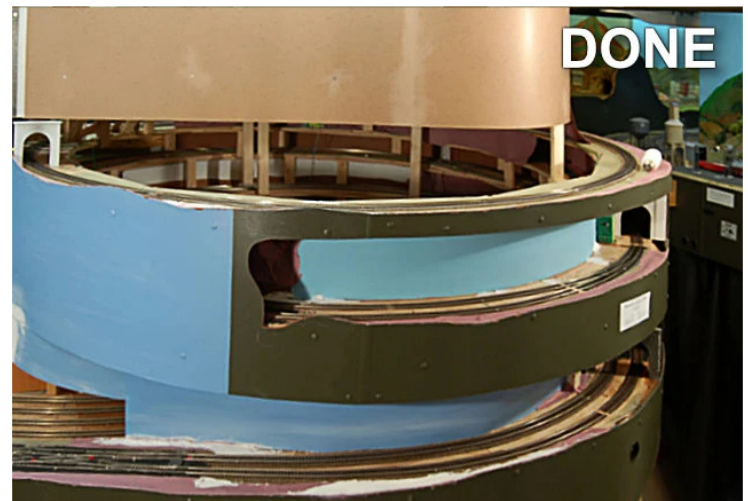
Click the link: <https://rrmodelcraftsman.com/>



Check out the new  
MRH Forum!



**Building a helix with  
plywood laminate  
roadbed**

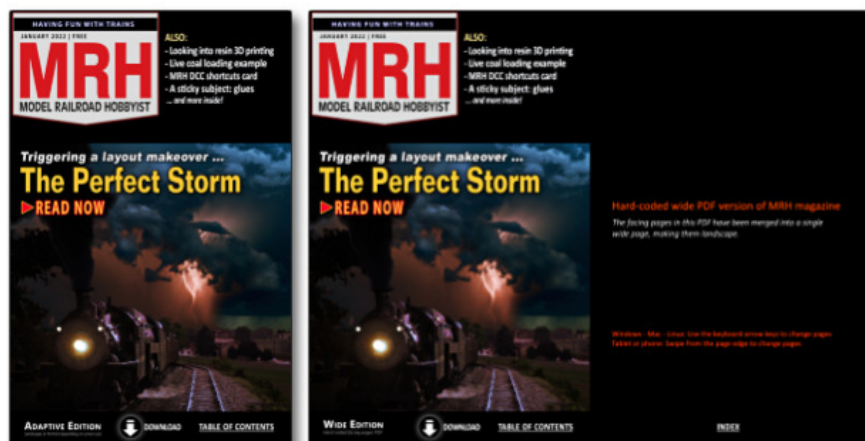


Building a herniated  
dodecagon helix (less waste)

[LEARN MORE ...](#)

## January 2022 MRH

January MRH was released 1 week ago



Click on the link: <https://model-railroad-hobbyist.com/>

NMRA Store Achievement Program Contests SIGs 100% Clubs NMRA Forums NMRA Archives Rail Pass        Member Log-In | Registration

 your portal to more fun in scale model railroading

[Home](#) [In The News](#) [Education](#) [Standards](#) [Regions](#) [Conventions](#) [Calendar](#) [Membership](#) [Contact](#)



**Welcome to**  
**Model Railroading**

**Get More from Model Railroading**  
Watch our video on Model Railroading

**GETTING STARTED**  
IN MODEL RAILROADING

**BECOME A MEMBER**  
JOIN THE NMRA TODAY!

**DONATE TODAY**  
EVERY GIFT HELPS

**Welcome to the National Model Railroad Association**  
Please View 'In The News' For Current News And Information

Click on the link for the NMRA website: <https://www.nmra.org/>

**NMRA members get discounts of up to 45% from over 40 companies. Isn't it time you joined?**

[Click here for details](#)

Bear Creek Model RR  
CatzPaw Innovations  
Clever Models  
CMR Products  
Deepwoods Software  
Deluxe Materials

Gatorfoam  
Great Decals  
Gren Frog Productions  
HotWire Foam Factory  
Jason's Brass Poles  
K.I.S.S. Method  
LAB Prod Productions

Logic Rail Tech.  
Micro-Mark  
Mine Mount Models  
MinuteMan Models  
Modelers Decals  
Model RR Benchwrk  
Model Train Catal.

Motrack Models  
MRC  
NScale Works  
OK Engines  
Old West Scenery  
Ram Track  
RR-CirKits

Rusty Stumps  
Scale Model Plans  
Scalecoat Paint  
Scenery Solutions  
Showcase Miniatures  
Stepcraft  
Team Track

N-Scale Archite  
Train Show  
Tichy Train Grp  
Train Installati  
TrainMaster TV  
UGears  
Unreal Details  
USA Airbrush  
WiFi Model RR

### Partnership Program

Discounts for NMRA Members

### Want to "test drive" the NMRA for a little while?

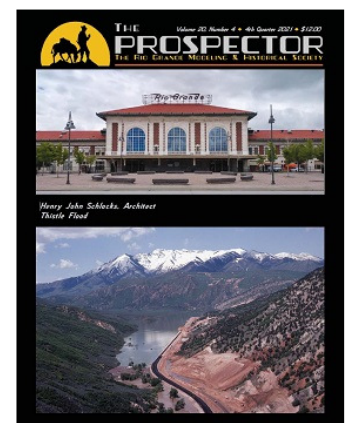
Sign up for our [9-month Rail Pass trial membership](#) for only \$19.95! Includes 9 months of **NMRA Magazine**, plus all regular member benefits (except voting).

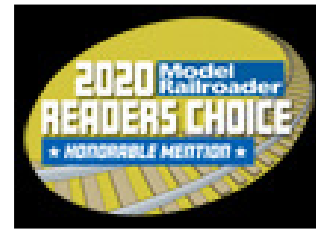


The mission of the **Rio Grande Modeling & Historical Society** is to preserve and disseminate historical information about the Denver & Rio Grande Western Railroad for the benefit of our members and to others by locating, gathering, preserving, interpreting tangible items relating to the D&RGW and distributing information, documents, publications thus promoting fellowship and education among persons with interests in the railroad.

All memberships in the Rio Grande Modeling & Historical Society include a one-year (4 issue) subscription to The Prospector, the official magazine of the Society, as well as a subscription to the Society's newsletter, the Green Light. Your subscription to The Prospector will begin with the issue that is "current" at the time you join. Your subscription to the Green Light begins with the issue that is current at the time of your enrollment and will run for 8 issues.

Click the link: <https://www.rgmhs.org/index.html>



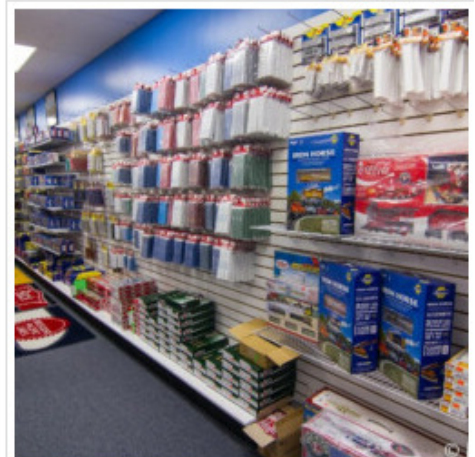
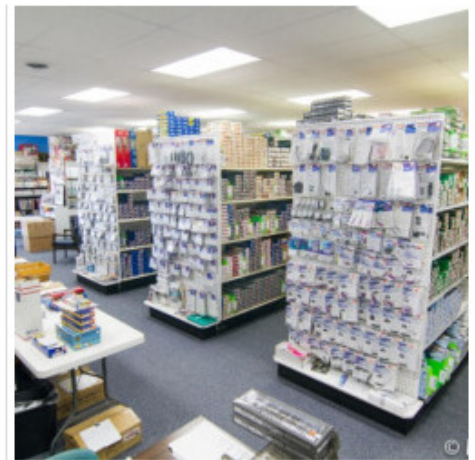


Happy New Year  
New additions to the store pages some HO Bowser items and all in stock N scale Fox Valley Models.

Whether you are one of our “show” regulars or a first-time visitor, we gladly invite you to come on in and browse around. You can follow us on Facebook by joining our page. We use Facebook and our newsletter to let you know when we have new announcements on the web site and any changes in our show schedule. Our newsletter is also used to send new product announcements and arrivals.

**Website:** <https://www.springcreekmodeltrains.com/>

**Facebook:** <https://www.facebook.com/springcreekmodeltrains>



Wow....

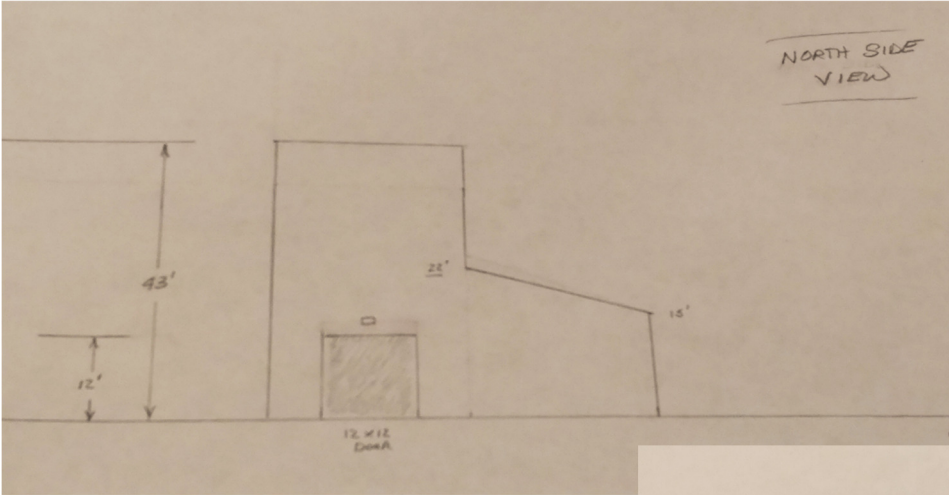
4 days crawling thru the wiring on my layout...and finally found the short...and a pair of unconnected wires just hanging loose behind the control panel that I had forgotten about.

Apparently I never got around to connecting them. They were the turnout power supply on the Eastern Division of my railroad. I guess that explains why the KATO switch controllers never worked as planned. I had wired around it with a "good enough for now" arrangement.

All fixed now.



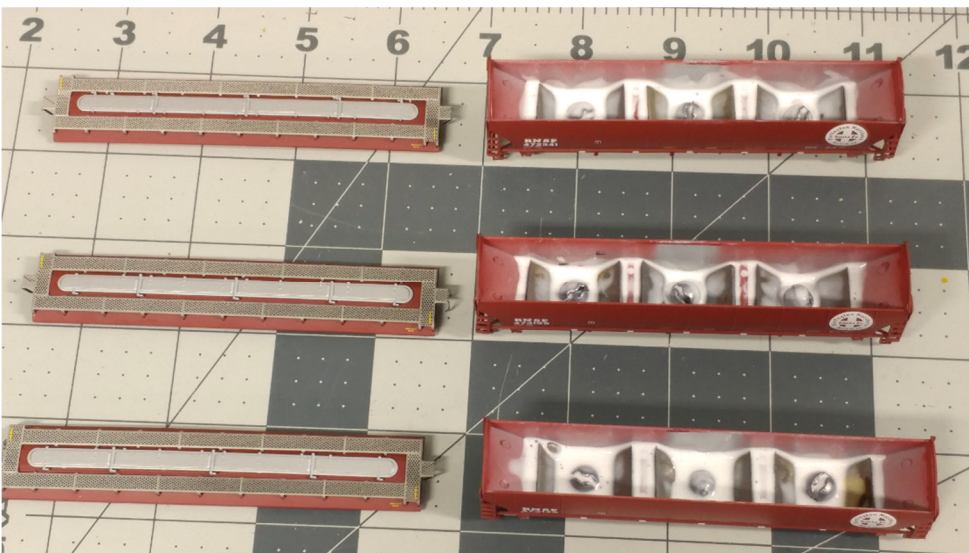
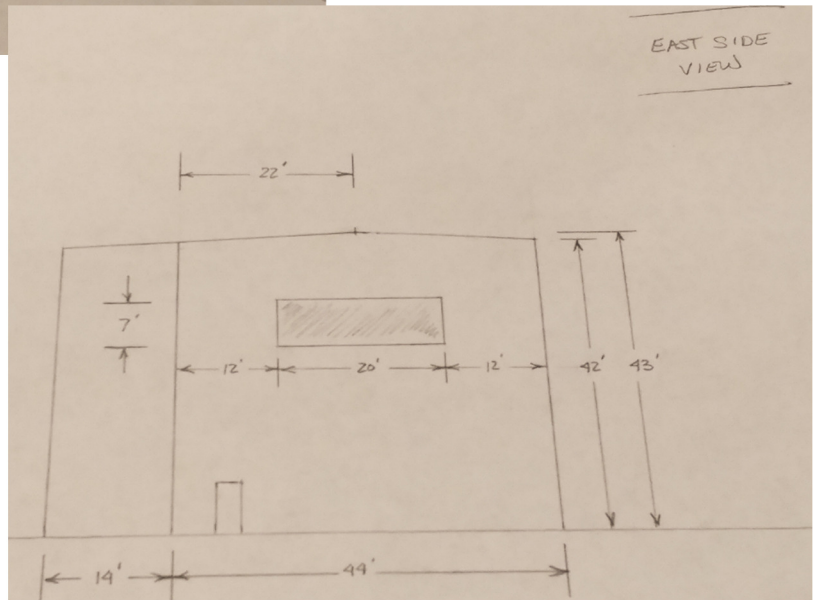
# WKR Update



So far, we have been able to draw two of the four scale drawings, the North and East side views.

It helps drawing all four sides, as when we compared these two, we discovered we mis-measured the height on the first drawing, so it was changed to match. The other two sides will be drawn soon.

We also ordered and received the shipment of Evergreen sheet styrene with the proper rib spacing, so once the drawings are complete, the actual construction may begin.



(Right) While lurking on the N Scale Supply website we discovered in the pre-owned section three Intermountain, BNSF, quad bay hoppers. When the package arrived, we discovered that most of the internal weights had broken loose. The Car Department quickly glued them back in, but felt the cars were underweight for WKR standards. We took the opportunity to add some round fishing weights, then secured all the weights with Tacky Glue.

# WKR Update



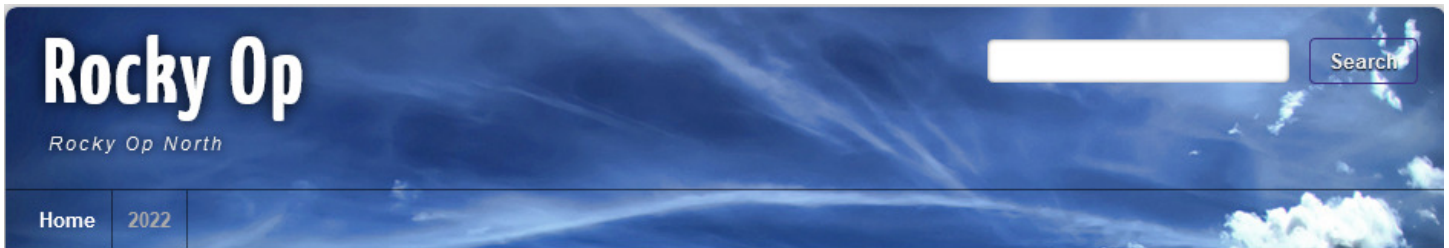
To bring the cars up to WKR standards, the wheel sets were replaced with ESM metal wheel sets which were also painted “Rust” color along with the couplers.



(Above) the Intermountain cars ready for WKR service.

(Below) A new set of Micro-Trains cars similarly modified.





Hello everyone!

Registration for RockyOp 2022 is now open. Note that this year's RockyOp will be hosted by the northern Colorado layouts. We have selected the dates of April 29-May 1 (Friday through Sunday), so reserve those dates on your calendar. We expect that those who participate will find some favorite layouts returning, some new layouts, some that have been on hiatus for a few years, and some that have been rebuilt. This is not your 2019 RockyOp! But every layout on it should be enjoyable to operate. We are working on reserving a block of hotel rooms close to the center of activity. More details will be coming.

**NOTE:** RockyOp 2022 is not a sure thing as Covid-19 is still a problem, and the event could be cancelled, depending upon what happens with getting the spread under control. The current agreement is that layout owners will decide individually what precautions (if any) will be required to operate. In general, the layouts are broken into two categories: those that require vaccinations with masks optional or required, depending on owner; and layouts with no COVID restrictions. Please consider this in making your layout selections. That information will be provided on each the layout descriptions web pages to assist you in deciding which layouts to operate on.

One registration form PER PERSON. If there are 2 of you coming together, you still need to fill out 2 forms! Note that this year we will not be using EventTools owing to the complexities of accommodating the COVID restrictions and preferences. Layout assignments will be made on first-come-first-served basis, with priority going to out-of-state attendees. Please keep in mind that with the various layout COVID restrictions, changing COVID mandates and individual registrations, and assuming the event is still hosted, participants may not get the layouts they requested. We will do our best to accommodate everyone's desires, but no guarantees! Registration closes April 2, 2022. Should the event be canceled, we will make every effort to let registrants know as soon as possible

Click the link for the website:

<http://www.covenantfamilyministriesl.org/RockyOp/index.html>

# **The Best Train Show Wichita, Kansas**

**By The Wichita Train Show & Swap Meet**

## **The Wichita Train Show & Swap Meet**

Is coming to the Cessna Activity Center  
at 2744 George Washington Boulevard on:

Saturday, February 5, 2022, from 9am-5pm

Sunday, February 6, 2022, from 11am-4pm

Sponsored in part by the **Chisholm Trail Division, NMRA**

- Operating Model Railroad Layouts
  - Model Train Contests
  - Model Railroad Clinics
  - Over 100 Dealer Tables
  - And much more...

## **DOOR PRIZES AWARDED EVERY HOUR!**

Admission \$8 Both Days

Kids 10 & Under Free with Paid Adult. Militarily, Fire, First Responders. law Enforcement with ID admission is \$1.00

Call: Phil @ [316-259-5190](tel:316-259-5190)

or

Email: [aylward1@cox.net](mailto:aylward1@cox.net)

# 2022 Layout Design and Operations Weekend

March 18th-20th, 2022

Tulsa, Oklahoma

Presented by the Indian Nations Division of the NMRA

## We're Back!

Welcome! We are pleased and excited to announce to you the upcoming **LAYOUT DESIGN AND OPERATIONS WEEKEND** to be held on **March 18th, 19th, and 20th**. We will have three operating events on Friday evening, Saturday evening, and Sunday Morning. There are 16 great layouts in the Tulsa Area to choose from.

Saturday morning and afternoon our seminar will be from 8:00 a.m. to 3:45 p.m. including guest speakers to fill out the day. A catered meal will be served in the basement of the Akdar Shrine Center at lunch which is included in the registration. Bring your track plans, photos, display boards and mockups to share with everyone. Great place to solicit feedback on your layout.

### Indian Nations preferred Hotel:

Embassy Suites by Hilton 3332 South 79th East Avenue Tulsa, Oklahoma 74145  
Room rate - King Suites - \$99, Double Suites - \$104, Good until midnight 2/24/22  
Booking Code - LDO Layout Design & Operations  
1-800-362-2779 (Embassy) Local - 918-622-4000

Use this link to make your hotel reservations:

<http://embassysuites.hilton.com/en/es/groups/personalized/T/TULESES-LDO-20220318/index.jhtml>

### Guest Speakers on Saturday:

- Eric Hansmann – “Prototype Inspiration for Manageable Size Layouts” - 8:15 a.m. to 9:15 a.m.
- Rich Gibson – “Prototype Modeling of the 1951 MEC: a Mixture of Accuracy, Guesswork, and Compromise” – 9:30 a.m. to 10:30 a.m.
- Doug Tagsold – “Designing and Operating the 1:72 Scale Colorado & Southern Clear Creek Division” 10:45 a.m. to 11:45 a.m.
- Catered Lunch and Track Planning Consulting - 11:45 a.m. to 1:15 p.m.
- Richard Frazier – “The Future of Model Railroading” – 1:15 p.m. to 2:15 p.m.
- Doug Tagsold – “Modeling the Railroads of Toledo, Ohio, A lesson on Research, Design, and Operations”– 2:30 p.m. to 3:30 p.m.

Click the link for the website: <https://ldopsigmeet.tulsanmra.org/>

# Date Book

## February 2022

5 <sup>th</sup> & 6 <sup>th</sup> Sat & Sun	<b>Wichita Train Show &amp; Swap Meet</b> <a href="https://besttrainshow.com/">https://besttrainshow.com/</a>	Wichita, KS
12 <sup>th</sup> & 13 <sup>th</sup> Sat & Sun	<b>Lawrence Model Railroad Club Annual Train Show / Swap Meet</b> <a href="https://www.railserve.com/jump/train_shows.cgi?ID=17">https://www.railserve.com/jump/train_shows.cgi?ID=17</a>	Lawrence, KS

## March 2022

18 <sup>th</sup> – 20 <sup>th</sup> Fri – Sun	<b>Layout Design &amp; Operations Weekend</b> <a href="https://ldopsigmeet.tulsanmra.org/">https://ldopsigmeet.tulsanmra.org/</a>	Tulsa, OK.
--	--	------------

## April 2022

2 <sup>nd</sup> Saturday	<b>Greater Tulsa Area Train Show</b> (Toy Train Operating Society) <a href="http://www.ttos-soonerdiv.org/division-events.html">http://www.ttos-soonerdiv.org/division-events.html</a>	Bixby, OK.
2 <sup>nd</sup> & 3 <sup>rd</sup> Sat – Sun	<b>Rocky Mountain Train Show</b> <a href="https://rockymountaintrainshow.com/Default.aspx">https://rockymountaintrainshow.com/Default.aspx</a>	Denver, CO.
23 <sup>rd</sup> Saturday	<b>Ark City Model Train Show</b> <a href="http://www.wichitoytrainmuseum.org/">http://www.wichitoytrainmuseum.org/</a>	Arkansas City, KS.
30 <sup>th</sup> – 1 <sup>st</sup> Sat – Sun	<b>Herington Railroad Days</b> Herington Community Building <a href="https://heringtonhistory.org/heringtonrailroaddays/">https://heringtonhistory.org/heringtonrailroaddays/</a>	Herington, KS.
29 <sup>th</sup> – 1 <sup>st</sup> Fri – Sun	<b>Rocky Ops</b> (North) <a href="http://www.covenantfamilyministriesl.org/RockyOp/index.html">http://www.covenantfamilyministriesl.org/RockyOp/index.html</a>	Denver, CO.



On The Back Cover:

One parting look at the annual McPherson Train Show.

## The *Main Line*

Publisher & Editor: Robert A. Simmons

The newsletter of the Western Kansas Division is published monthly for no charge by Robert A. Simmons, Division Superintendent / Director

Copyright 2022, by Robert A. Simmons, all rights reserved

If you have a change of e-mail address, or no longer wish to receive the newsletter, please contact Robert Simmons

[Trainman55@hotmail.com](mailto:Trainman55@hotmail.com) or P.O. Box 157 – Dodge City, KS. 67801 or call (620) 521-3591

Please send all inquiries, ideas, or submissions to: [trainman55@hotmail.com](mailto:trainman55@hotmail.com)