



The

Main Line

January 2022



National Model Railroad Association

Mid-Continent Region

The Monthly publication of the



Western Kansas Division



On The Cover:

Phase II of the concrete plant build begins on the WKR N-scale layout. The scenery crew completed the aggregate pits, and now are moving on to construction of the main structure. More details inside....

In This Issue:

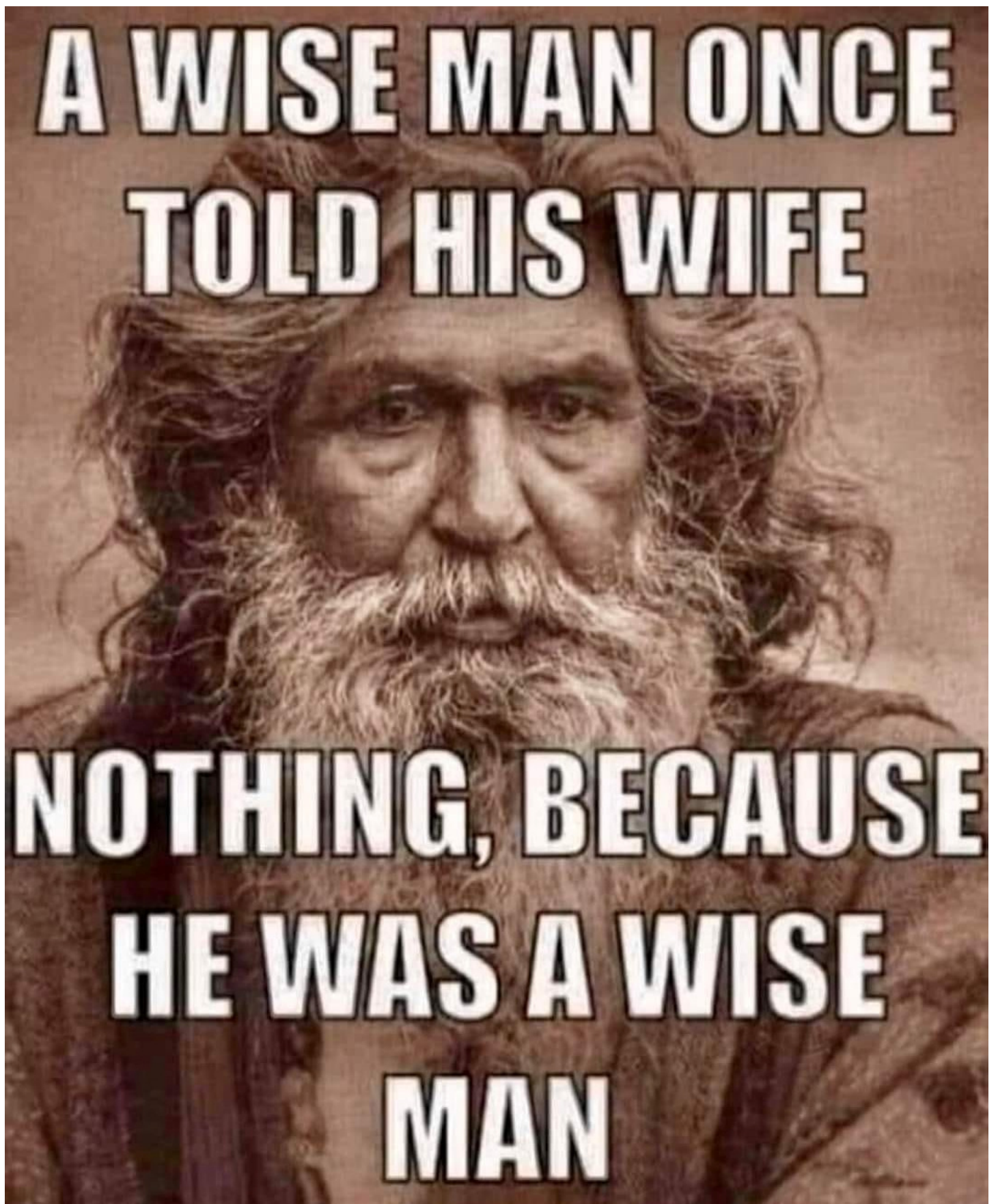
Editor's Musings.....Page 2

Christmas Haul.....Page 7

Real Deal.....Page 12

WKR Update.....Page 22

Date Book.....Page 34



Editor's Musings

New and improved, the two most over used descriptors in advertising. Why, because it works. There's something about the unfulfilled promise of something new, a new relationship, a new car, a new home. Of course, we have to try it out before we know it is actually better. Thus, it is with New Years celebrations, the promise of what is to come. We celebrate the passing of the old year and ring in the new hoping it will be better.

A new year is only a promise, we have to make it better. When it comes to your modeling, perhaps this is the year you decide to push yourself out of your comfort zone and try new techniques. Back in 2014 when construction began on the Western Kansas Rails layout, a decision was made to scrap everything from the past and try new ideas. Atlas code 80 flextrack was replaced by Micro-Engineering code 55, all track switches are scratch built all the way through new scenery techniques.

Why not make this the year you push yourself to try new products and ideas, and perhaps start or continue the process to achieve your Master Model Railroader certificate.



Founded in 1984, the **Union Pacific Historical Society** (UPHS) is an independent non-profit organization dedicated to the preservation of the history of the Union Pacific Railroad from its beginning in 1862 to the operation as it is today. The society is not supported by or affiliated with the railroad other than the preservation of its rich and colorful history.

- *Regular membership* (for those in the USA over 25 as well as all those abroad) Both Youth and Regular memberships entitle one to receive four issues of our highly acclaimed quarterly magazine, *The Streamliner*, as well as discounts on selected products in the Company Store.

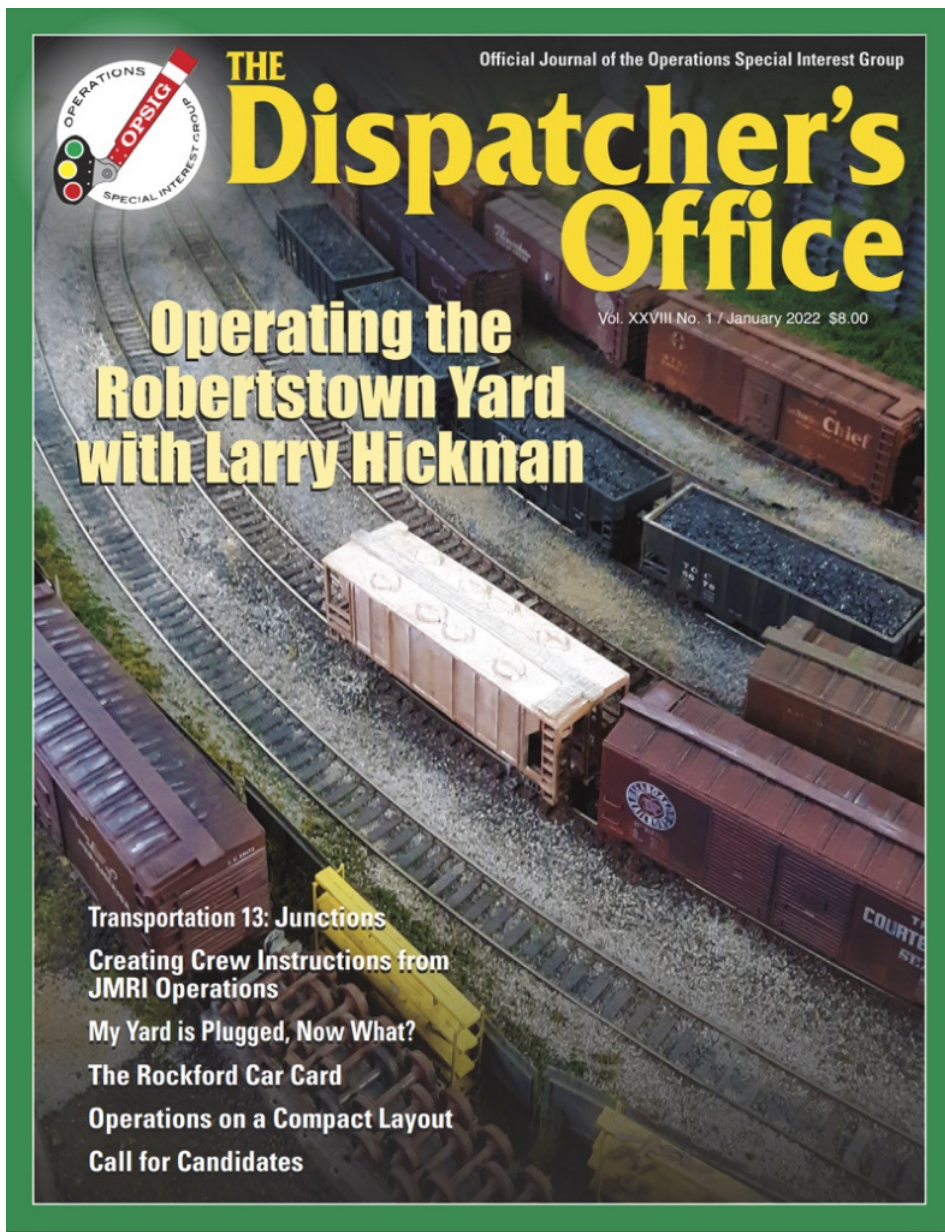


Check out their website: <http://uphs.org/>



JANUARY 2022: This month we introduce the Iowa Interstate Milan Branch, and a new series by Scott Thornton about how he adapted this modern branch line operation into an HO scale shelf layout design. We also take a look at modeling the dairy industry, with a review of typical New England creameries in HO and O, as well as an overview of milk cars used by the Boston & Maine Railroad. Enjoy modeling tips and techniques, product news and reviews, and more in the January issue of Railroad Model Craftsman!

Subscribe today: <https://rrmodelcraftsman.com/>



The principal purpose of the Operations Special Interest Group (OPSIG) is to discuss, develop and disseminate ways of operating model railroads to realistically

emulate practices of the prototype. This includes sharing information on various methods of generating, moving and controlling traffic to heighten the feeling that our models are an active and integral part of the national rail transportation network, serving shippers and consignees throughout the nation. We also discuss and communicate information about the methods and procedures used by the real railroads and ways of most practically and realistically adapting them to the model world.

So, if you like to operate the railroad you've created, this is a place to learn more and find others with similar interests. Just click on the link: <https://www.opsig.org/>

We publish a quarterly magazine, *The Dispatcher's Office*, which in addition to containing articles and information on railroad operations (both prototype and model), contains listings of operating layouts, sessions, and events that members are invited to attend. [Back issues are available](#). In addition, the OPSIG web site serves as a clearinghouse for publicizing [regional operating events and meetings](#), where layouts are open for guest operations. We also have a [Facebook page](#) and send out the *Second Section* email newsletter on a regular basis.



Robert Simmons
797 subscribers

CUSTOMIZE CHANNEL

MANAGE VIDEOS

HOME

VIDEOS

PLAYLISTS

COMMUNITY

CHANNELS

ABOUT



Uploads ▶ PLAY ALL



Merry Christmas from the Western Kansas Division,...

53 views • 1 day ago



New, N-scale, Scale Trains Autoracks 12/13/21

395 views • 12 days ago



BLI Loco Track Test

289 views • 2 weeks ago



WKR Quick Set Up

129 views • 2 weeks ago



Dodge City, KS. Train Show 2021 - Free-Mo modules by...

62 views • 1 month ago



Dodge City, KS. Train Show 2021 - N-Trak layout by...

76 views • 1 month ago

The **Western Kansas Division**, NMRA has a **YouTube** page hosted by Robert Simmons. In the last 28 days, the channel received **2,497 views** and currently has **797 subscribers**. Recent videos include...



BLI Loco Track Test

Using the brand new Brooklyn Locomotive Imports SD40-2s to test the DCC operations line for track defects (we found 3) after repairs were completed.

<https://www.youtube.com/watch?v=tom5eKzeEiU>



New, N-scale, Scale Trains Autoracks 12/13/21

We take a look at the newly arrived Scale Trains N-scale autoracks.

https://www.youtube.com/watch?v=kQ1_qR_8wy0



Merry Christmas from the Western Kansas Division,...

The Christmas Spirit in Western Kansas.

<https://www.youtube.com/watch?v=reRJCcDlaO4>

Just click the link: <https://www.youtube.com/channel/UC9EPv8cQ04rRGAYts-734jw>



Our Story

In 2011, Midwest Model Railroad started with the idea of making this hobby more accessible to everyone. Since day one we have strived to keep our operating cost to a bare minimum and pass on those savings to you. As of this summer, 2021, we are succeeding in offering some of the best prices anywhere in the hobby, with one of the largest lists of new inventory in the United States.

Some great side effects of this goal have been the creation of real time inventory on our website and a turnaround time of just one day between purchase and shipping. We are centrally located in Kansas City, MO meaning orders to any corner of the United States arrive with in just a few days.

As you explore our store, you will find we deal in more than just model railroad. Board Games, slot cars, and much, much more coming with the new expansion, finding just what you are looking for is simple and efficient.

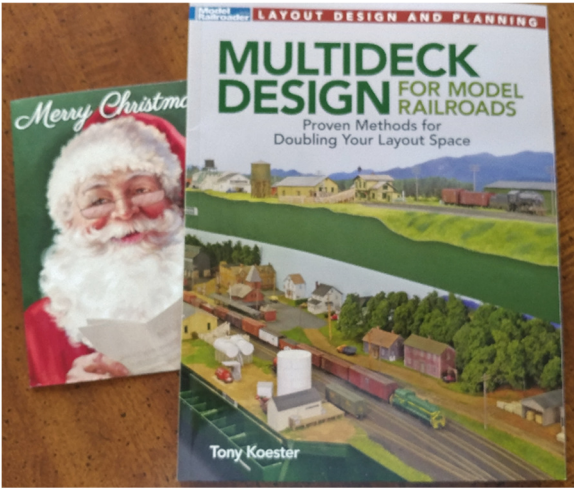


Now with 15,000 sq ft, Midwest is one of, if not, the largest model train stores in the country.

Click the link to the website: <https://midwestmodelrr.com/>

Christmas Haul

I hope everyone had a Blessed and Merry Christmas. This year, Santa gave my Wife some help with the gifts (remember, as long as it says “from Santa”, you’re not really buying for yourself)



(Left) Depending on how this next year goes, this could be a very timely gift. Tony Koester’s new book on multideck layout design will give many needed insights on the new home layout.

(Right) For almost two years the new train room in the basement has been ready to begin construction.



(left) The crew lounge and Dispatcher’s nook (not shown) are also nearly complete.

I am still going through the mental gymnastics of what geographic area to model, and what roads to include, so I’m still in the planning stage.

The latest issue of the ***Caboose Kibitzer*** is now online for your enjoyment.

We hope that this email finds everyone healthy and safe. With everything that is going on, there is current news on upcoming events in this issue. Please stay safe and remember to share your model building experiences and activities on the MCoR NMRA Face Book Page as well!

The MCoR / LSR Joint Convention was a great weekend!

Please take a few minutes and see what our new editorial staff has put together for you. If you have any comments, suggestions, ideas, or articles we would love to hear them.

In this issues, you may find information on such topics as:

- Member Awards and Achievements
- Regional Club Listings
- Train Show Information
- Scratch Building Articles
- Railroad History
- Modeler's Experiences
- Regional Pike Registry
- Layout Operations
- Railroad History
- Convention News
- MCoR Division Activities

Just click on the link below, you will have access to the First Issue of Volume 72 of the Caboose Kibitzer.

Latest [Caboose Kibitzer!](#)

All of our electronic back issues are also available at on the Mid-Continent Region NMRA web site.

<http://www.mcor-nmra.org/region/CK.html>

In your service,

Brad Slone MMR
President
Mid-Continent Region NMRA

CABOOSE
KIBITZER

IN THIS ISSUE

- Convention Wrap-up—Page 6
- Convention Opportunities—Page 8
- Achievement Program Judging—Page 12
- AP vs Contest Room Clinic—Page 18
- Convention AP Awards—Page 23
- Contest Room Awards—Page 25
- Convention MCoR & LSR Region Awards—Page 36

Tulsa Union Convention Member's Choice
Best Of Show: Chuck Lind, MMR (Page 26)

Volume 72, Number 1a
1st Quarter 2022
January—February—March

© Mid-Continent Region of the National Model Railroad Association
www.mcor-nmra.org

Note: this is a re-issue incorporating corrections to the Awards recipients found on pages 25-37.



What is NRail?

In 1974, Jim FitzGerald started publishing a newsletter with the intent of establishing communications with the N scale community about new ideas and about N scale. That newsletter became the NTRAK Newsletter and in 1994, NTRAK became a formal organization with incorporation. In 2000, T-TRAK was born and introduced through The NTRAK Newsletter which continued to be a communications channel for the N scale community.



Today, N scale is the second most popular scale in the North America and the Newsletter continues to be a communications channel for N scale. The purpose of NRail is to promote N scale in all forms, all standards in many different environments at many different displays.

Membership in NRail supports N Scale and provides the communications channel on which N Scalers have come to rely.

Become a member - join us now!

Membership in NRail includes:

- a year of the Newsletter (6 issues)
- support of the National T-TRAK Layout
- support of NTRAK layouts at major train shows
- access to the Members Only section of NRail.org
- discount on merchandise in the [NRail store](https://nrail.org/)

Click on the link to view the website: <https://nrail.org/>



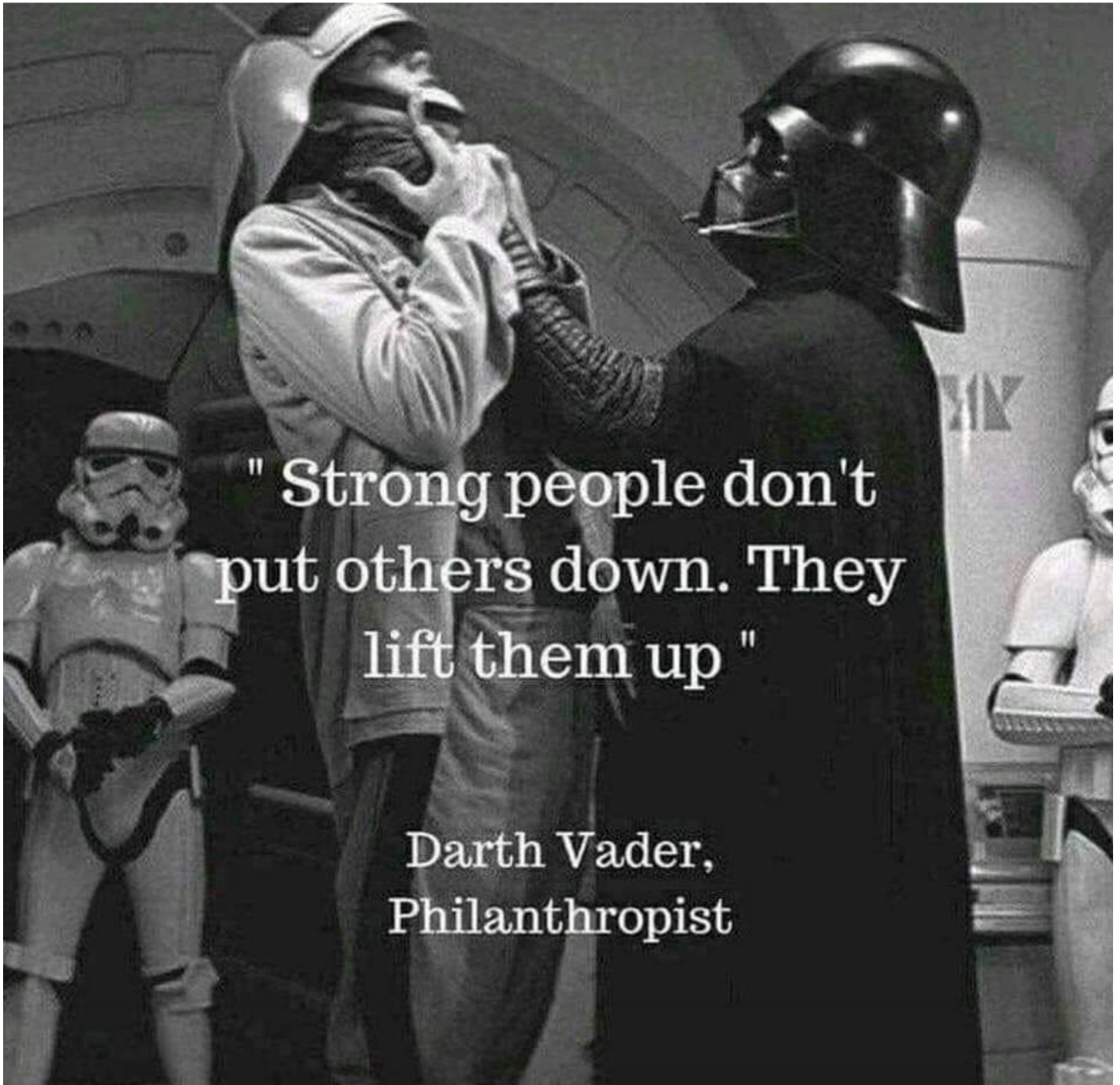
We exist to preserve the history and chronicle the operation of the Burlington Northern Railroad and its successors, as well as the MRL. For information on historical societies for railroads that merged to become the BN or BNSF. You will find all sorts of interesting, informative and useful information about the BN, BNSF and MRL such as locomotive and freight car lists, employee timetables, yard maps and much, much more.

The information is all free. The cost of maintaining it comes out of the annual dues paid by members of our society plus other donations. If you find this site useful, consider [joining](#).

Members receive our quarterly publication, [The BN Expediter](#), an all color magazine containing all sorts of information and stories about the railroads we cover.

Click the link for the web site: <https://fobnr.org/>





Real Deal



Just before Christmas 2021, I was looking for interesting items for the Real Deal and was able to get close to the old turntable in Dodge City in the BNSF yard. (Above) a distance view of the entire turntable.

(Below) A closer look at the control shack.



Real Deal



(Above) A zoom shot of the turntable.

(Below) A view of the right side showing the pit wall.



Real Deal



(Above) A trio of BNSF muscle idles in the Dodge City yard.

(Below) BNSF 532 was built in October 1990 as ATSF 532 a **GE B40-8W**. It also wore BNSF warbonnet colors.



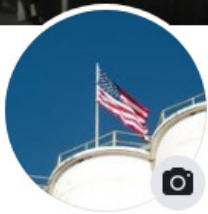
Real Deal



(Left) The middle sister of the trio is BNSF 8184, a **GE ES44C4**. No builder information was available



(Right) Not a good vantage point, but the third sister is BNSF 7972 is also a **GE ES44C4**.



Western Kansas Division

Create @Username · ★ 5 (5 reviews) · Organization

+ Add a button

Home

About

Photos

Events

More ▾

Promote



Click on the link to follow the antics of the Western Kansas Division:

<https://www.facebook.com/Western-Kansas-Division-592835177514577>



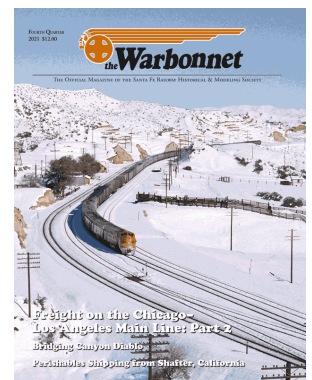
The Santa Fe Railway Historical and Modeling Society

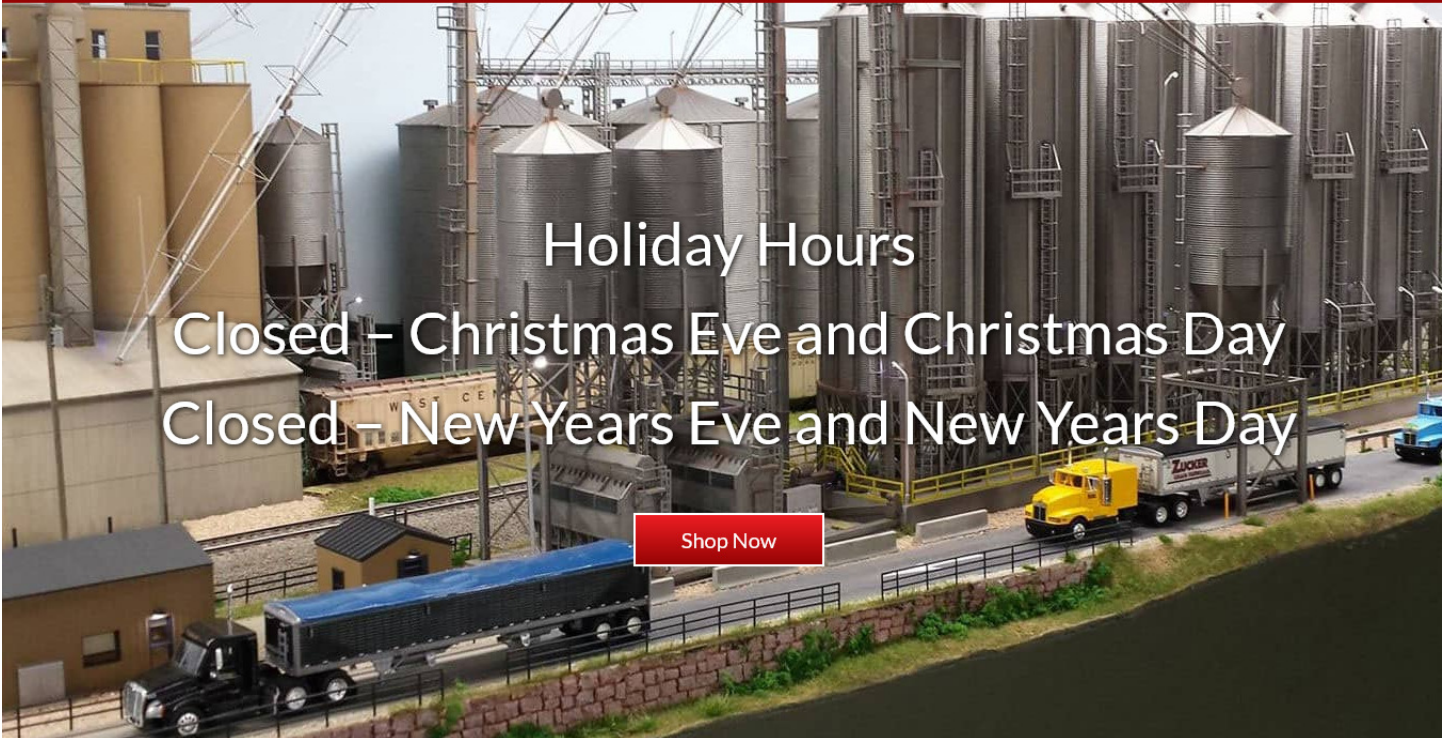
Regular members receive the Society's quarterly magazine, *The Warbonnet*, the quarterly newsletter, *Running Extra*, and receive a 20% discount on most Society publications and offerings. They also receive access to the Members' Only area of the website, which contains hundreds of documents about the Santa Fe.



Join today, just click on the link: <https://sfrhms.org/>

The Society and its predecessors have been publishing information about the Santa Fe since 1969. The Society offers exceptional publications on the history and modeling of the Santa Fe. From its flagship quarterly magazine, *The Warbonnet*, to its comprehensive books on history, motive power, rolling stock and modeling, the Society is the definitive and authoritative source on all things Santa Fe.



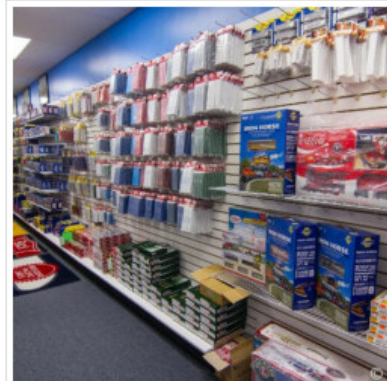
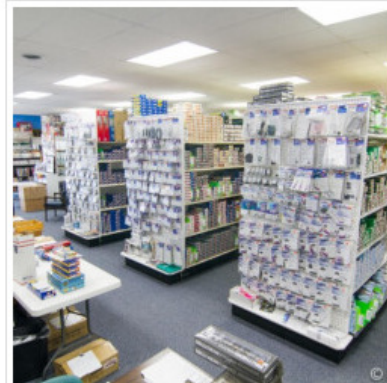


Holiday Hours
Closed – Christmas Eve and Christmas Day
Closed – New Years Eve and New Years Day

[Shop Now](#)

A few photos of our store

Thank you to Matt Martin for taking these wonderful photos in 2015 and allowing us to use them.



Click on the link for the website: <https://www.springcreekmodeltrains.com/>

**STEAL A MAN'S WALLET AND HE
WILL BE POOR FOR A WEEK**

**SHOW HIM MODEL RAILWAYS AND
HOW TO BUY TRAINS AND HE WILL
BE POOR HIS ENTIRE LIFE!**



Click on the link for the website: <https://www.nmra.org/>

Trial Membership

Railpass Forms

Would you like to test drive the NMRA?

Now's your chance! With a Rail Pass membership, you'll have access to one of the world's largest railroad libraries, get reduced rates on special layout or collection insurance, receive 9 issues of NMRA Magazine, and much much more.

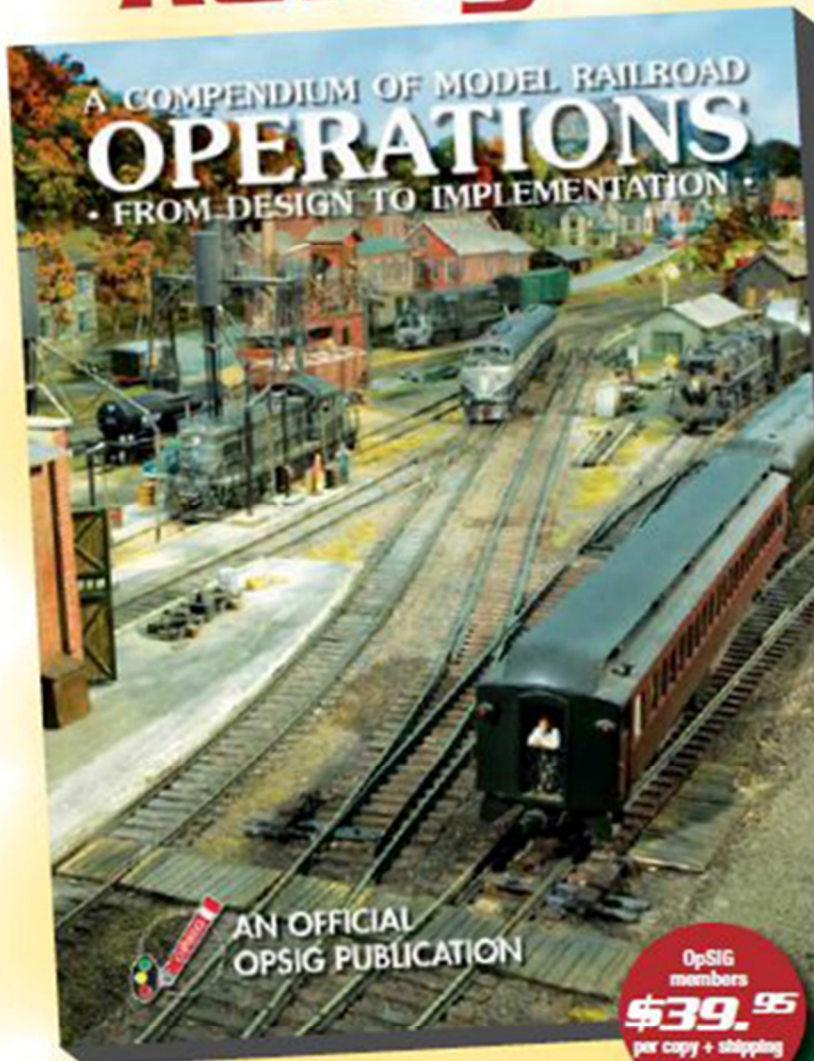
Select one of the methods below, print it out and fill it in and MAIL it to HQ at:

NMRA Rail Pass Membership

National Model Railroad Association, Inc.

P.O. Box 1328, Soddy Daisy TN 37384-1328

Dispatcher to OpSIG Publication No. 2, you're ...
Ready to Roll!



All model railroaders, whether expert or beginner, will find a wealth of useful information in the OpSIG's second publication, **A Compendium of Model Railroad Operations - From Design to Implementation**. A complete guide to all things operations, our latest offering covers every aspect of prototype operations and how to apply them to your model railroad—from design and staffing to yards and paperwork, from communications and signals to dispatching and car forwarding—in 310 full-color pages. Written by ten of your fellow modelers and professionals, **The Compendium** contains more than 350 photos, 120 illustrations, and countless tips, pointers, suggestions, and prototype information to help guide you on your journey. A must for any modeler interested in prototype operations, add it to your library today!

OpSIG members
\$39.95
 per copy + shipping

Non-members
\$49.95
 per copy + shipping

Shipping: US (\$8)
 Canada/Mexico (\$21)
 Overseas (\$28)

For shipping rates on multiple books, as well as better international shipping, please contact Steve Benezra.

To Order: Please mail a check or money order, payable to OpSIG, with number of copies and your mailing address, phone number, and e-mail to:

Steve Benezra
 2737 Thistle Trail
 Hillsborough, NC 27278-9302
 Opsig.editor@gmail.com

For Paypal orders, please add \$1 to the cost of the book and send to OPERSIG@Yahoo.com. Provide your mailing address and telephone number in the subject box.

The OpSIG is a 501(c)3 non-profit corporation. For information on how to join the OpSIG, please visit www.opsig.org.

December 2021 MRH

December MRH was released ten days ago



The new MRH Forum is LIVE!

Don't miss these interesting MRH forum posts!

Christmas Tree Trains and Holiday Setups: let's see yours!

Printle figures

Let it snow on YouTube

Let's see your rust buckets!

Become a Registered Reader today: <https://model-railroad-hobbyist.com/>

WKR Update

The WKR Track Gang ran into some track issues after the Dodge City Train Show in November.

(Right) The first issue was some transport damage to one rail of section 15, one of the yard modules. This same rail has been damaged several times, so a permanent fix needs to be made to the end plate. This rail has already been repaired.



(Left) Just after coming back from the show, our new motive power from Brooklyn Locomotive Imports (BLI) arrived in the mail. Of course, they are all

MoPac, N-scale, with DCC & Sound. The first trip around the layout found three track issues that needed to be dealt with.

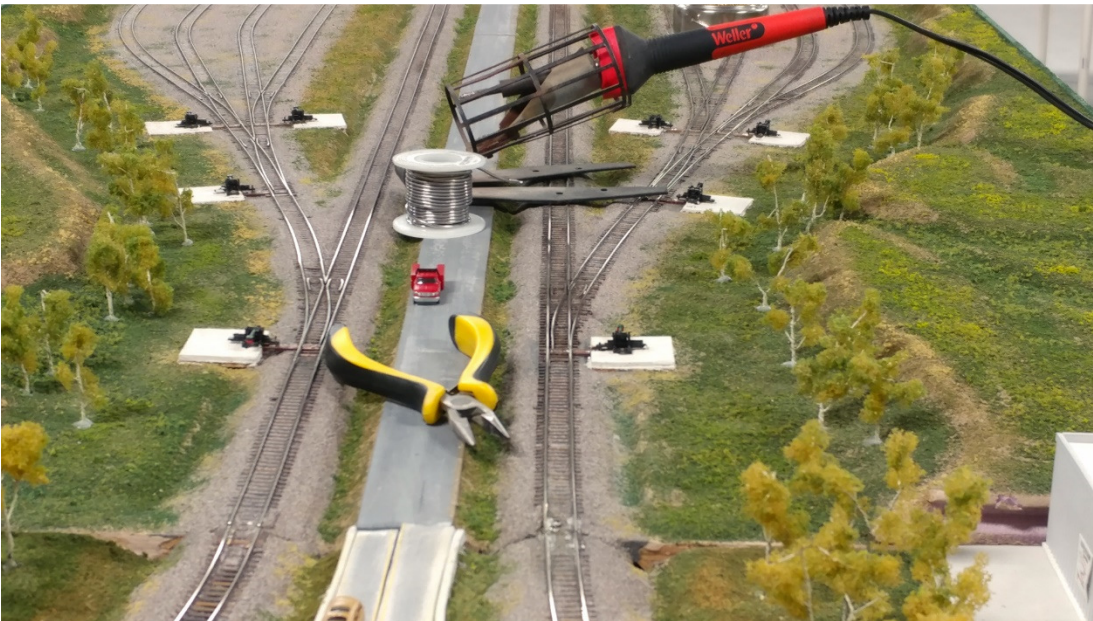


(Above) How we missed this before is beyond me, but the joint between modules 14 and 15 was not lined-up. It has caused a few problems but not many.

WKR Update



(Above) Just a touch of the soldering iron, and the rails now line up, a permanent fix.



(Left) The first switch in the center of the photo had one of the point rails break the solder joint. The rail was repositioned, heat applied, and the issue was terminated.

The new BLI locomotive also had problems with two switches, but a slight adjustment with a Dremel and cut off disk fixed both issues. Now the new locos circle the layout smoothly. Check out the Robert Simmons [YouTube](#) channel for video proof. (scroll up to page 5)

WKR Update



(Above) Last month, the scenery crew completed Phase I of the new concrete plant, the three aggregate bins.

(Below) Phase II begins, the construction of the main building...



WKR Update

Step 1 is to gather photos and measurements from the structure to be modeled. So, I took the opportunity afforded by Christmas Day to visit the site. I like using holidays as I know the plant will be shut down and I will not be interrupting their operations.



I took a note pad, my phone and a tape measure. Each side of the structure was photographed, with extra photos of “detail” items.

One important measurement was the distance between the ridges of the metal siding (12-inches) so I can now order the proper size Evergreen sheet styrene. To get overall dimensions, I started at one corner then measured each door and window.

Once the sheet styrene comes in, the construction can begin.

While waiting, I can do some drafting work to make scale plans on paper.



Announcements

- The First Quarter 2022 issue of the [Caboose Kibitzer](#) is available. Thanks to Ray Brady for his work and please send him your articles!
- Thanks to Robert Simmons for making the [December 2021 issue of the Main Line](#) available!
- Thanks to Ray Brady for making the [October-December 2021 issue of the Brass Pounder](#) available!
- Thanks to Jim Marlett for making the [November/December 2021 issue of Trails, Rails, & Tales](#) available!
- The [website for the 2022 National Convention](#) is now open!

Welcome to the Mid-Continent Region of the National Model Railroad Association

A 501(c)3 non-profit corporation, MCoR includes the southern half of the state of Iowa, portions of Illinois, and the entire states of Arkansas, Oklahoma, Missouri, Kansas and Nebraska. Since 1990, MCoR's leadership has fostered a strong program of developing local divisions with the purpose of bringing the potential for NMRA activity and involvement to a community near you. From only two divisions in 1990 located in metropolitan areas, MCoR now has well over a dozen divisions and over 900 members.

Follow Us On Facebook

The Mid-Continent Region now has a [Facebook Group](#) (Thanks Bob!). Please check it out and friend!!

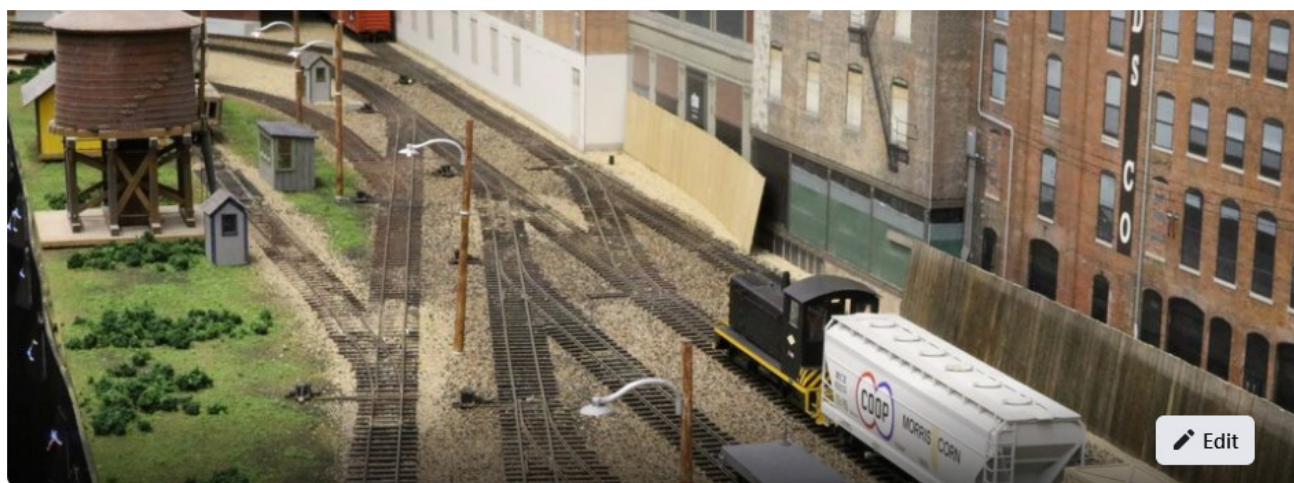
If you have an event you want mentioned here or in the [Calendar](#), please send it to the [webmaster](#).

Upcoming Events

- The winter 2022 board meeting will be held from 9-10 am Central Standard Time (that is 8-9 am for our members in the mountain time zone) on 1/8/2022. Per the change adopted during the 2021 winter board meeting, this will be a remote call. Members who wish to attend should contact their local board member for further information.
- From March 18th-20th the Indian Nations Division of the NMRA. Layout, Design, Operation (LDOP) weekend. Akdar Shrine Center 2808 S Sheridan Road, Tulsa, OK 74129. Three days of operations on 16 different

Click on the link for the website: <http://mcor-nmra.org/>

Click on the link for the Facebook page: <https://www.facebook.com/groups/1851848998468077>



Mid-Continent Region, NMRA

Public group · 300 members

Joined ▼

+ Invite

About

Discussion

Featured

Topics

Your Items

Events

Media

Files

People

Search

More

BECOME A TRAINS.COM UNLIMITED MEMBER



START YOUR TRAINS.COM UNLIMITED MEMBERSHIP TODAY TO UNLOCK EXCLUSIVE MEMBER-ONLY BENEFITS!

- All content on Trains.com from our family of brands, including NewsWire, Product Reviews, Track Plan Database and more!
- Unlimited Video Streaming of all new video series and workshops
- Full magazine archives from all five publications—that's more than 85 years of issues!
- Digitized Kalmbach Media books
- Live streaming events and virtual tours
- Online Q&As with our editors
- A weekly e-newsletter
- Live webcams
- Exclusive giveaways and discounts
- FREE Trains.com Unlimited t-shirt!
- AND MORE!

START YOUR 30-DAY **FREE** TRIAL



**Model
Railroader**

**Model
Railroader** **video**
PLUS

**CLASSIC TOY
TRAINS**

Classic Trains

**Garden
RAILWAYS**

Trains

THE BEST IN MODELING & RAILROADS • ALL IN ONE STOP!

Western Kansas Division, NMRA

14 followers

Home
Chats
Groups
Pages
Events
MeWe

MeWe Store
Notifications
Settings

Posts
Photos/Videos
About
Analytics
Schedule
Notifications
Settings

Western Kansas Divisi...

N Scale Model Trains

N scale Model Railroa...

Western Kansas Divisi...

Western Kansas Divisi...

Western Kansas Divisi...

Invite your friends to this Page!

Invite Your Friends

Share the page link:

<https://mewe.com/p/westernkansasdivisionnmra>

Share a post with your followers

Western Kansas Division, NMRA

Published by ROBERT Simmons · 16 days ago

12/13/21

The NEW, N-scale, Scale trains autoracks just arrived, and we take a look at them on the WKR N-scale layout...

https://www.youtube.com/watch?v=kQ1_qR_8wy0

New, N-scale, Scale Trains Autoracks 12/13/21 - YouTube

We just received our shipment of the new N-scale Scale Trains autoracks, so we decided to take a quick look on the WKR N-scale layout...

www.youtube.com

Western Kansas Division, NMRA

Magazine

EDIT

Notifications #Tags Photos/Videos

Chad Dragoo, Greg Amer, William McCabe emojied your photos: "12/8/21 With the WKR N-scale layout back up, we..."

3

4 days ago

Hoosier Hermit commented on your link: "Hey Western Kansas Division advertise your page..."

7 days ago

Skipper Crews, William McCabe, Greg

Check out our **MeWe** page here:
<https://mewe.com/p/westernkansasdivisionnmra>



Our mission is to preserve and promote the heritage of the Missouri Pacific Railroad and its affiliates. This includes the Texas & Pacific, Chicago & Eastern Illinois, Kansas Oklahoma & Gulf, Alton & Southern and many other roads that were part of the MP family.

The 2022 convention will be held in Palestine, TX on October 6-9.

Look for more info on the 2022 convention in January.

The Society publishes an illustrated quarterly magazine called "The Eagle." Each issue contains current news and articles of historical interest. Rosters of equipment, technical information and data, and modeling projects are just a few of many items of interest published along with the business of the society.

Click on the link for the website: <http://www.mopac.org/>

Gateway 2022

Gateway Rail Productions LLC



Sun, August 07, 2022 @ 08:00 AM — Sat, August 13, 2022 @ 06:00 PM (CDT)

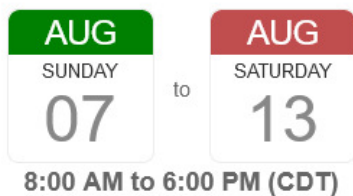


The 2022 NMRA annual convention is August 7-13. The event is being held at the St Louis, Marriott Grand Hotel. Registrants will receive one free self-driving tour.

Registration: **Open**

Location

Event Dates



8:00 AM to 6:00 PM (CDT)

[Save to my calendar](#)

Registration Closes

AUGUST 07, 2022 @ 6:00 PM



Address

Marriott Grand, St Louis
800 Washington Ave, St Louis, MO
Saint Louis, MO USA

Register today...just click on the link:

https://www.eventsquid.com/event.cfm?preview&event_id=13724

**NEW EXPANDED
RETAIL STORE HOURS**

**MON-FRI 10am to 6pm
SAT 10am to 4pm**

SHOWROOM WILL BE CLOSED ON

- SATURDAY DEC 25TH
- SATURDAY JAN 1ST

NORMAL HOURS ALL OTHER DAYS
THROUGH THE HOLIDAYS

We are located at:

6060A West 55th Ave.
Arvada, Co. 80002

NOTE WE HAVE RECENTLY MOVED
SAME BUILDING BUT NOW OUR
DOOR IS ON THE OPPOSITE SIDE
WEST SIDE TOWARDS THE STREET



OPEN FOR ONLINE ORDERS AND SHIPPING EVERY DAY

We want to buy your stuff!

N Scale Supply is looking to buy collections,
large and small, or just extra stuff you may have

[click for
more details](#)

Click the link to the website:

<https://www.nscalesupply.com/nscalesupply.html>

We're Back!

Layout and Design Operations Weekend 2022

March 18th, 19th, and 20th

Presented by:

The Indian Nations Division of the NMRA

*Three operating sessions. Choose from 16 great layouts -
Friday and Saturday Evenings and Sunday Morning*

Guest speakers on Saturday from 8:15 a.m. to 4:00 p.m.

Doug Tagsold, Rich Gibson, Eric Hansmann, and Richard Frazier

Registration and sign in from 7:30 to 8:00 a.m. at the Akdar Shrine Center

Catered Lunch will be Served

Track plan consulting available during the lunch period

Visit **<https://tulsanmra.org>** for more information and signup

Registration Fee: \$40.00 (No Change since 2017!)

Akdar Shrine Center

2808 S Sheridan Road, Tulsa, OK 74129



MODEL TRAIN CONVENTION & EXPO

— FUNDRAISER —

JANUARY 8-9

SATURDAY 9-6 | SUN 10-3

McPherson Community Building | 122 E Marlin St

\$7 TICKETS / PERSON

\$5 STUDENT / SENIOR / FIRST RESPONDER

DOOR PRIZES EVERY HOUR

PRIZE FOR
BEST IN SHOW

FOR EXHIBIT AND VENDOR



PROCEEDS BENEFIT:

McPherson County MakerSpace, Fire Prevention Fund
and McPherson Area Boy Scouts

Date Book

January 2022

8th & 9th
Sat & Sun

McPherson Train Show
McPherson Community Building
<https://www.mcphersoncountymakerspace.org/trains>

McPherson, KS.

February 2022

5th & 6th
Sat & Sun

Wichita Train Show & Swap Meet
<https://besttrainshow.com/>

Wichita, KS

12th & 13th
Sat & Sun

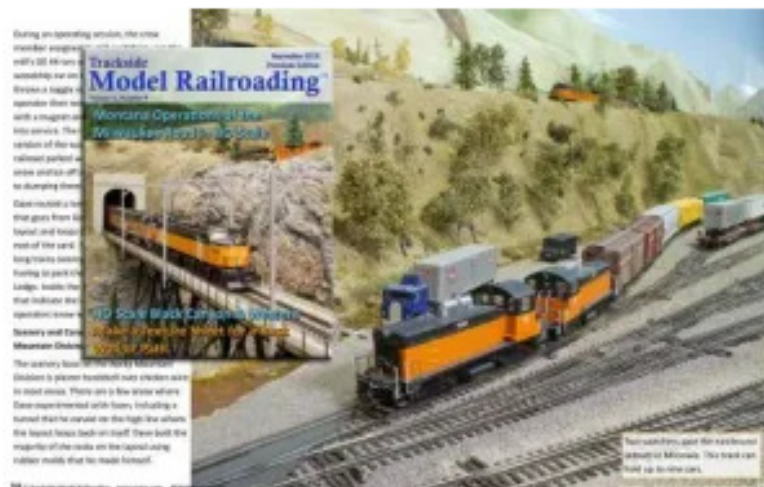
Lawrence Model Railroad Club Annual Train Show / Swap Meet
https://www.railserve.com/jump/train_shows.cgi?ID=17

Lawrence, KS

Trackside Model Railroading™ Digital Magazine & Movies

Trackside Model Railroading is a publisher for model train enthusiasts who want to enjoy layout tours in depth. The digital magazine is advertisement-free and covers two layouts each month. We feature layouts of all the fine scales with lots of full-page photos, articles about the railroads, and short videos.

Our DVD and Blu-ray movies feature much more video of the layouts and often include interviews, operations, and creative backstories and railroad history.

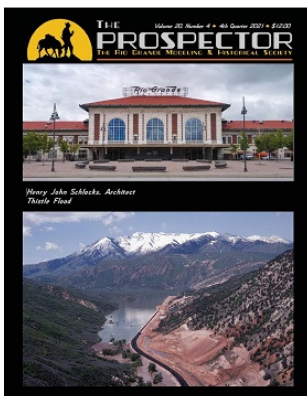


Just click the link: <https://www.tracksidemodelrailroading.com/>



RailPictures.Net - Image Copyright Timothy Tonge

The mission of the **Rio Grande Modeling & Historical Society** is to preserve and disseminate historical information about the collective Rio Grande railroads for the benefit of our members and to others by creating and promoting fellowship and education among persons interested in the D&RGW. Locating, gathering, preserving, interpreting and distributing information, documents, publications and other tangible items relating to the D&RGW.



The RGM&HS publishes ***The Prospector***, is our professionally produced and beautifully illustrated quarterly magazine featuring the finest work of historians and other experts on all aspects of Rio Grande Railroad. Dealer inquires on carrying our magazine are welcome. You can contact membership@rgmhs.org for more details.

Click the link for the website: <https://www.rgmhs.org/>



The *Main Line*

Publisher & Editor: Robert A. Simmons

The newsletter of the Western Kansas Division is published monthly for no charge by Robert A. Simmons, Division Superintendent / Director

Copyright 2022, by Robert A. Simmons, all rights reserved

If you have a change of e-mail address, or no longer wish to receive the newsletter, please contact Robert Simmons

Trainman55@hotmail.com or P.O. Box 157 – Dodge City, KS. 67801 or call (620) 521-3591

Please send all inquiries, ideas, or submissions to: trainman55@hotmail.com