



The

Main Line

July 2021



National Model Railroad Association

Mid-Continent Region

The Monthly publication of the **Western Kansas Division**



On The Cover:

The streetlight project on the Western Kansas Rails N-scale layout is finally complete. Proper streetlights were installed on sections 14, 1, corner 2, and 3 and all are wired into the main wiring harness. This photo was taken during the day, so sunlight is entering through the windows, but the room lights are off giving a twilight effect.

In This Issue:

The real deal.....Page 3

NMRA Convention.....Page 13

Tulsa Union 21 Convention.....Page 14

Western Kansas Rails Layout Update.....Page 20

Date Book.....Page 30

Editor's Musings

We have made it halfway through 2021 and things continue to get better for the most part. As restrictions continue to ease I am seeing more and more model railroading events being added to the calendar. One positive aspect of the restrictions has emerged in the form of innovations in the industry. Since in-person meetings were cancelled, the NMRA and others didn't just sit around on their hands, they got busy coming up with new ways to share the hobby. It is my belief that even when things are back to "normal", ZOOM meetings, Facebook, MeWe, YouTube and other internet platforms will continue to be used. There is really no substitute for train shows, but there have been new ways to share the hobby developed and they continue to evolve.

Many groups have hosted ZOOM meetings featuring layout tours, discussions, business meetings, seminars, and clinics. Clubs and individuals have taken to YouTube to do many how-to articles, layout tours, and operating sessions. I look forward to seeing what others come up with as well as participating with ideas of my own. The sky is the limit...



To-Summer ~~~~ From-Spring -- On Time

Spring has sprung here at Midwest Model Railroad! With new products coming in everyday, we are more excited than ever to see what this summer holds.

Always remember, we ship all in stock orders either the same day or the next day at the latest.

Our customers are the priority and order fulfillment are part of that.

Feel free to reach out to us during business hours for any questions and concerns.

We are always here to answer each and every question you might have.

<https://midwestmodelrr.com/>

SURPRISED MY WIFE TODAY ❤️❤️



You'd be surprised how comfortable the couch is getting...

Real Deal



Picked from the “Lucky Catch” file, on July 1st I was downtown getting the mail when I glanced over to the BNSF rail yard and saw these interesting locomotives. The light grey unit is **SFGX 1810**, while the green unit is painted for Cargill and is marked **TWYX 6499**. Normally 1810 is parked at the ADM grain elevator on Trail Street in Dodge City, and I don’t have any information on why it is in the BNSF yard, one possibility is it is being taken for service another is possible replacement.

Research shows that the 1810 is a famous movie extra appearing in the movie ***Runaway Train*** filmed in 1985, and later in the movie ***Under Siege 2 – Dark Territory*** in 1993.

“The 1810 is a GP7u that made 1500 H.P. and was built in August 1951 for the U.S. Army as their (USAX) 1821. Serial No. 15691, frame No. 7012-1. It later went to the Alaska Railroad who converted it to a low hood model.”

Runaway Train...

“The runaway train's lineup in the movie consisted of four Alaska Railroad locomotives, all built by EMD: GP40-2 #3010, F7 #1500, and #1801 and #1810, both GP7s. The latter two locomotives had previously been rebuilt by ARR with low short hoods as opposed to a GP7's original high short hood but were fitted with mock-up high hoods made of plywood for the film, branded with fictional numbers 531 and 812, respectively. Because #1801's cab had been reconstructed prior to filming, the '531' prosthetic hood stood slightly higher than the normal hood height of a GP7 to fit over the locomotive's number-board.

The locomotives used in the film have gone their separate ways:

ARR GP40-2 #3010 is still active on the Alaska Railroad, painted in the new corporate scheme.

ARR F7 #1500 was retired from service in 1992 and is now at the Museum of Alaska Transportation and Industry Museum in Wasilla, Alaska, as can be seen on the front page of their website MuseumOfAlaska.org.

ARR GP7 #1810 was sold to the Oregon Pacific Railroad and operated as OP #1810.”

Real Deal



(Above) the 1810 painted in Oregon Pacific colors

"By 1988 the #1810 (along with fellow Alaska #1804) were in a scrap yard in Klamath Falls, OR, where the McCloud River picked the pair up. Both units were off the McCloud by late 1993. Both passed through the hands of Nevada Industrial Switch...(NIS).

In 1993 it was used for the filming of *"Under Siege 2 - Dark Territory"*.

In 1999, it was purchased for use on the Molalla (now Liberal) Division of the Oregon Pacific. Mr. Samuels said that when they got the locomotive, the fake brains from the movie were still inside the cab and had to be cleaned out. However, it was never used there as the crew preferred the switcher engines as they were easier to see out of with their shorter hoods." (I wonder if the fake brains had anything to do with that)

"In November 2007, Mr. Samuels finalized the sale of the 1810 along with the SP Slug 1010 to a private grain railroad in southwest Kansas, **Cimarron Valley Railroad**, using reporting marks SFGX. The paint scheme is the same as Archer Daniels Midland locomotives."



Real Deal



For the last several years the 1810 has been the switching locomotive for the ADM grain elevator in Dodge City, KS.



(Above) TWYX 6499 is in the BNSF yard in Dodge City, KS.

Real Deal

Not a movie star, the TWYX 6499 did get around. It started life in September 1952 as Chicago North Western (CNW) 1557, serial number 16872 as a GP-7. Its history includes serving the FWWR as 4299, the CNW as 4299, the CGAX as 6499, the FWWR as 4299 (again), and now the TWYX as 6499. I can find no reference to reporting marks TWYX.



There are also references it was rebuilt as a GP9.



Real Deal



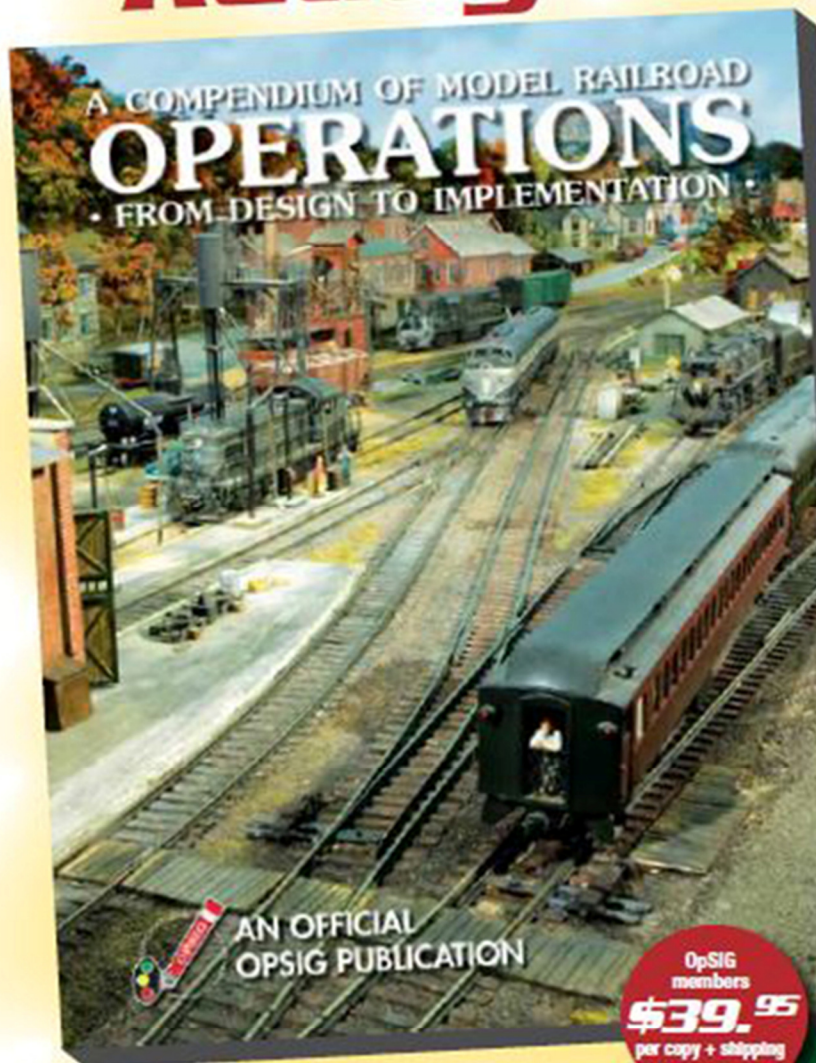
Also in the Dodge City BNSF yard were two strings of tank cars. I believe they transport alcohol from the Wind River plant in Garden City. Either empties on their way to Garden or loaded heading East.



(Jerry Bruce Photo)

(Above) MAN 4605 is sitting in Fairmont, NE. Manning Rail is a family owned and operated short line railroad founded in 2012. They operate on a 7 mile stretch of track running from Burruss that ties into the BNSF mainline at Fairmont, NE. The railroad is primarily used for car storage. Photo by Jerry Bruce of McPherson, KS.

Dispatcher to OpSIG Publication No. 2, you're ...
Ready to Roll!



All model railroaders, whether expert or beginner, will find a wealth of useful information in the OpSIG's second publication, **A Compendium of Model Railroad Operations - From Design to Implementation**. A complete guide to all things operations, our latest offering covers every aspect of prototype operations and how to apply them to your model railroad—from design and staffing to yards and paperwork, from communications and signals to dispatching and car forwarding—in 310 full-color pages. Written by ten of your fellow modelers and professionals, **The Compendium** contains more than 350 photos, 120 illustrations, and countless tips, pointers, suggestions, and prototype information to help guide you on your journey. A must for any modeler interested in prototype operations, add it to your library today!

OpSIG
members
\$39.95
 per copy + shipping

Non-
members
\$49.95
 per copy + shipping

Shipping: US (\$8)
 Canada/Mexico (\$21)
 Overseas (\$28)

For shipping rates on multiple books, as well as better international shipping, please contact Steve Benezra.

To Order: Please mail a check or money order, payable to OpSIG, with number of copies and your mailing address, phone number, and e-mail to:

Steve Benezra
 2737 Thistle Trail
 Hillsborough, NC 27278-9302
 Opsig.editor@gmail.com

For Paypal orders, please add \$1 to the cost of the book and send to OPERSIG@yahoo.com. Provide your mailing address and telephone number in the subject box.

The OpSIG is a 501(c)3 non-profit corporation. For information on how to join the OpSIG, please visit www.opsig.org.



The Friends of the **Burlington Northern** also include **BNSF**, and **Montana Rail Link**. You can view their web site here:

<https://fobnr.org/>



Sign Up Now for Your BNSF 2022 Calendar!

BNSF is finalizing its 2022 train photo calendar, featuring scenic images captured by employees across our network. To receive a calendar in the fall, please click here to sign up and verify your mailing address.

Sign up today! We have limited supplies and calendars will be provided in order of requests received. Click on the link below...

<http://www.bnsf.com/in-the-community/friends-of-bnsf.page>

Trackside Model RailroadingTM

July 2021
Premium Edition

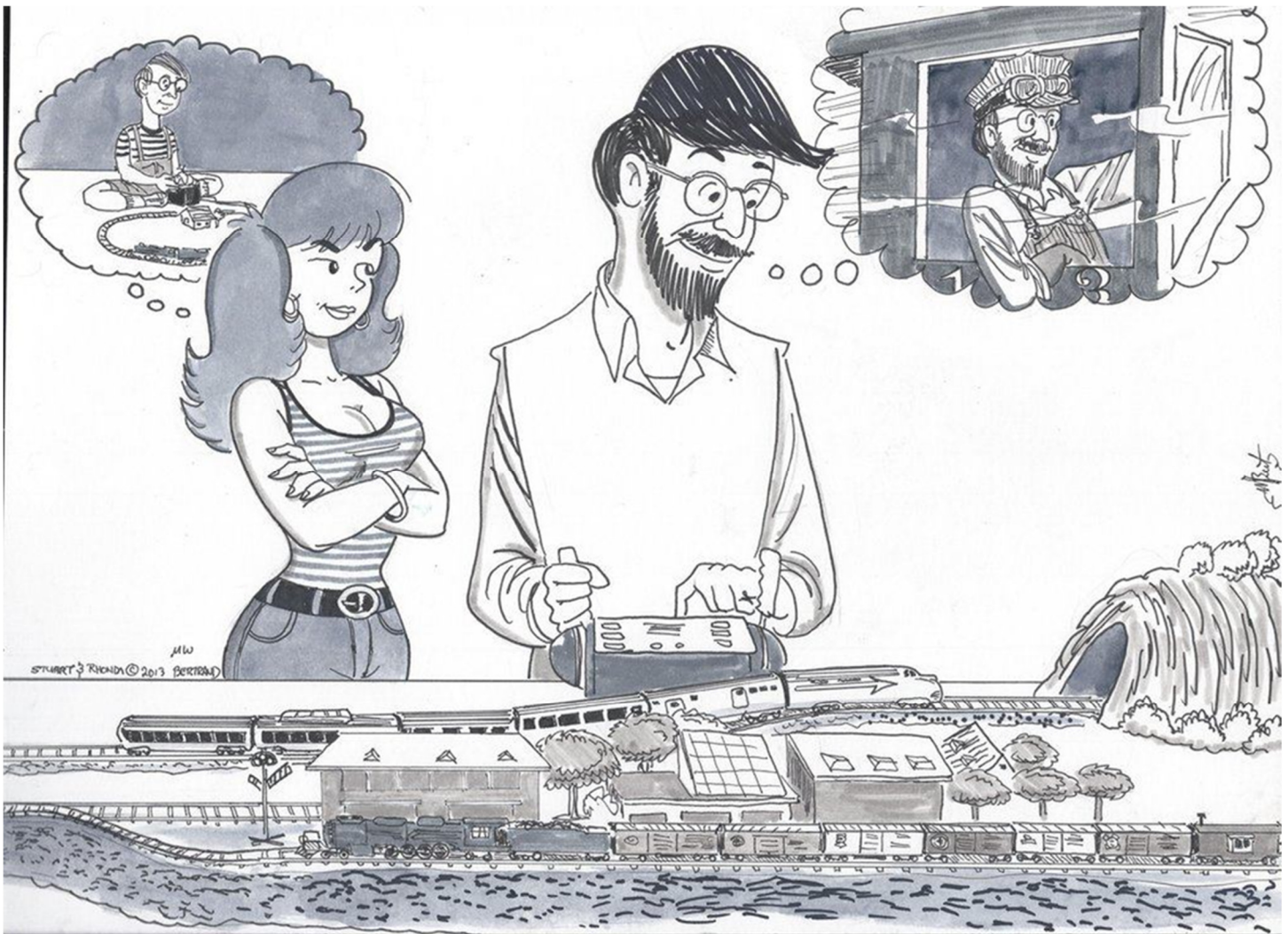
Volume 9, Number 7

Modeling Germany on the SDEV
Restarting Operations Post-Covid

Ops Photos of the Port
Townsend Southern

Sign up for your copy of Trackside Model Railroading, just click on the link below...

<https://www.tracksidemodelrailroading.com/>

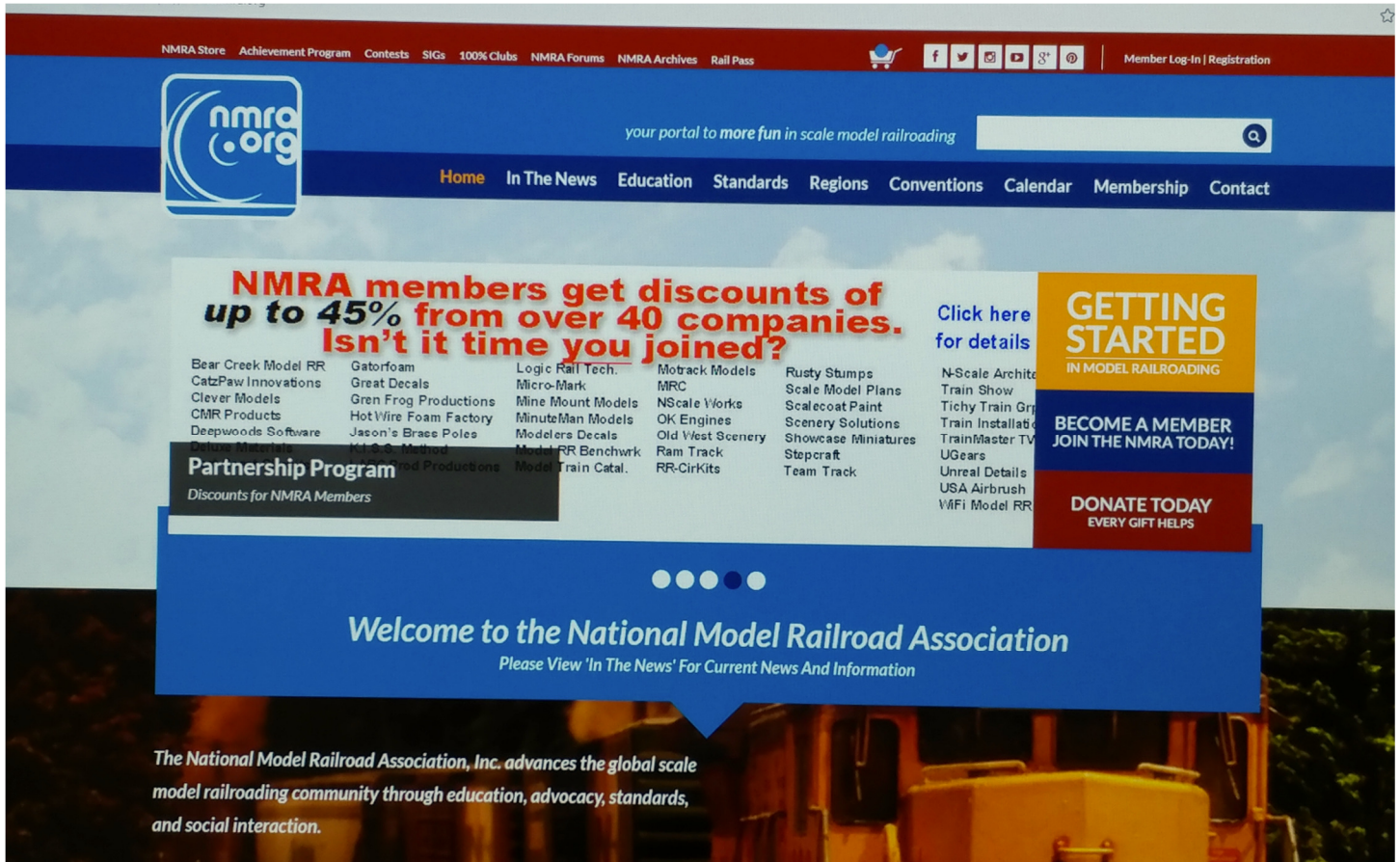


How my Wife thinks I look...

How I think I look...



Interested in the **Union Pacific** check out the **Union Pacific Historical Society**:
<http://uphs.org/>



You can find all the latest information on NMRA activities, conventions, events, and discounts by clicking on:

<https://www.nmra.org/>

Trial Membership

Would you like to test drive the NMRA? Try **Railpass...**

Now's your chance! With a Rail Pass membership, you'll have access to one of the world's largest railroad libraries, get reduced rates on special layout or collection insurance, receive 9 issues of NMRA Magazine, and much more.

Click on the link above, select Railpass, print out and fill in the form, then MAIL it to:

NMRA Rail Pass Membership
National Model Railroad Association, Inc.
P.O. Box 1328, Soddy Daisy TN 37384-1328

* Rail Pass offer is good in the U.S. only and is for new members and those who have not been NMRA members for two years or more. Individuals can join at Rail Pass rates only once. Rail Pass members can attend conventions and participate in contests but cannot hold office or vote in NMRA events. Membership will renew at the regular membership rate..

Or, if you can't wait, enroll online at the NMRA Store.





NMRA 2021 Virtual National Convention

Rails By The Bay

**July 6-10, 2021
Everywhere!!!**

The Clinics

Over 70 clinics in all

- All Pre-recorded (Great Quality)
- Clinician Chat Q&A during clinic talk
- Dedicated Q&A meeting after talk
- Q&A can last up to 3 hours per clinic

The Layouts

- Amazing Layouts
- Hundreds of articles
- MMR built
- "The Best of the West"

Don't Miss Out!!!

Attention Registered NMRA 2021 RBTB Attendees

NMRA 2021 RBTB Login and Getting Around Information emails are sent to all registered attendees 2 days after registration using the email that was registered.

Please check your email and junk email for emails from:
NMRA 2021 Rails By The Bay and the email address
greathall@nmra2021.com

If you have registered for RBTB and have not received an email, please send an email to
greathall@nmra2021.com

Some of the Layouts on Tour



Keynote: Michael Gross



Well known actor, AT&SF modeler, railfan and short line owner Michael Gross will be delivering the keynote address.

A Bargain!!!!



Convention	\$100
Hotel	\$900
Airfare	\$600
Transfers	\$100
Rental Car	\$200
Food	\$200
Alcohol	\$?

Register Now!!!

Time To Register!

2021 TULSA UNION CONVENTION

[Home](#)[Clinics](#)[Layouts](#)[Contests](#)[Non-rail](#)[Timetable](#)[Register](#)[Hotel](#)[Contact](#)[Updates](#)

October 6th to 10th, 2021 in Tulsa, Oklahoma

Welcome to the 2021 Tulsa Union Convention website

The place to find details, news and updates about this year's joint regional convention

Come to Tulsa and pick from over 20 clinics and 16 model railroad layouts to see during the event. Enjoy featured Clinicians from two Regions and tour a variety of quality layouts, in the model railroading City of Tulsa.

Check out the list of Clinics planned. Look thru pictures of Layouts on tour. Sign-up for an Operating Session. Bring a model to the Contest Room.

Visit the Registration page today to sign up and pay, all online. The Hotel page has location details and a link to book your room, online. Plus review other event details and updates on the pages of this website.

Take advantage of the Early Registration discount before August 1st

This Convention is a collaboration of the Indian Nations Division, Mid-Continent and Lone Star Regions, of the National Model Railroad Association. A first-time venture by both regions, coming together in Tulsa this October.

Come to Tulsa in October for the 2021 Convention !

Ken Ehlers, Co-Chairman, Indian Nations Division & Mid-Continent Region

Marc LaChey, Co-Chairman, Lone Star Region



Tulsa
94:23:38
Days Hrs Mins

Recent updates on
the Non-Rail page

There will be a variety of Clinics during this Convention. Topics ranging from modeling techniques to prototype history, discussions on scale operating practices to real industry processes. Take a look at the list below of the various Clinics currently planned for this year's Convention.



Fuzzy Anstine – Getting those shelf engines back into service

The clinic will go over many of the things you can do to get those old brass engines off the shelf and back on the layout. Will cover maintaining fine tuning, oiling, DCC installs along with many of the common problems and fixes of early brass engines.

Al Boos III, MMR – Skidders and Yarders

What the difference between a skidder and yarder? Come to this clinic and find out. Logging operations used many different types of equipment in getting the logs from the woods to the mill. The different types of skidders and yarders operations will be covered.

Ken Ehlers, MMR – Prototype Track Planning

This clinic will look at how Ken designed his Sn3 Pandora & San Miguel Railway to follow the Rio Grandee Southern and will look at the many modifications and compromises that were necessary in order to fit his layout into a specific space. The clinic will focus on designing a track plan that balances prototype scenic realism with a desire to achieve realistic operations.

Steve Davis – Layout Design for Operations: KCS 3rd as a case study

Whether you are considering building a new model RR from scratch, expanding one you already have, converting a layout to operations, or are just interested in the planning process, you'll find something of interest as Steve Davis, whose HO scale KCS 3rd sub was featured in the October 2019 issue of Railroad Model Craftsman magazine, reviews the considerations that went in to that layout design as well as how other layout design styles can be adapted for operations.

The Convention runs from Wednesday to Sunday, October 6th-10th, 2021

...originally scheduled in June 2021, it was rescheduled to October due to Covid.

Before August 1st, 2021 the early Registration fee is only \$60.00 for Attendees

On and after August 1, 2021 the normal Registration fee is \$75 for Attendees

The Non-Rail Attendee fee is only \$30.00 a person (no early discount)

Two convention Polo shirt options are available, with or without a pocket.

Color is Navy, they are 65/35 Polyester/Cotton, 3 button classic fit, from S&S Activewear.

To participate in one or more formal Operating Sessions, visit to the [Layouts](#) page and review the details, and make a list of your choices before you start to register.

Great Layouts To Visit...

The Convention will feature many home layouts open for touring. Most will also offer "operating sessions" you can register to attend.

The Tulsa area model railroaders have become known for having a hotbed of operating model railroads. Annually, Tulsa layout owners host weekend long, round robin, operating events.

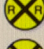
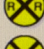
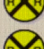



We hope to provide some of this experience during the Convention. There will be opportunities for both experienced and novice Engineers.

Layouts tours will be available to all registered convention attendees, where operating session 'slots' are limited and assigned in advance, based on your registration date and choices.

If you want to operate at one or more sessions, you will make choices during your registration. This includes picking layouts, plus picking days and times you will be available (in town) to attend a session.

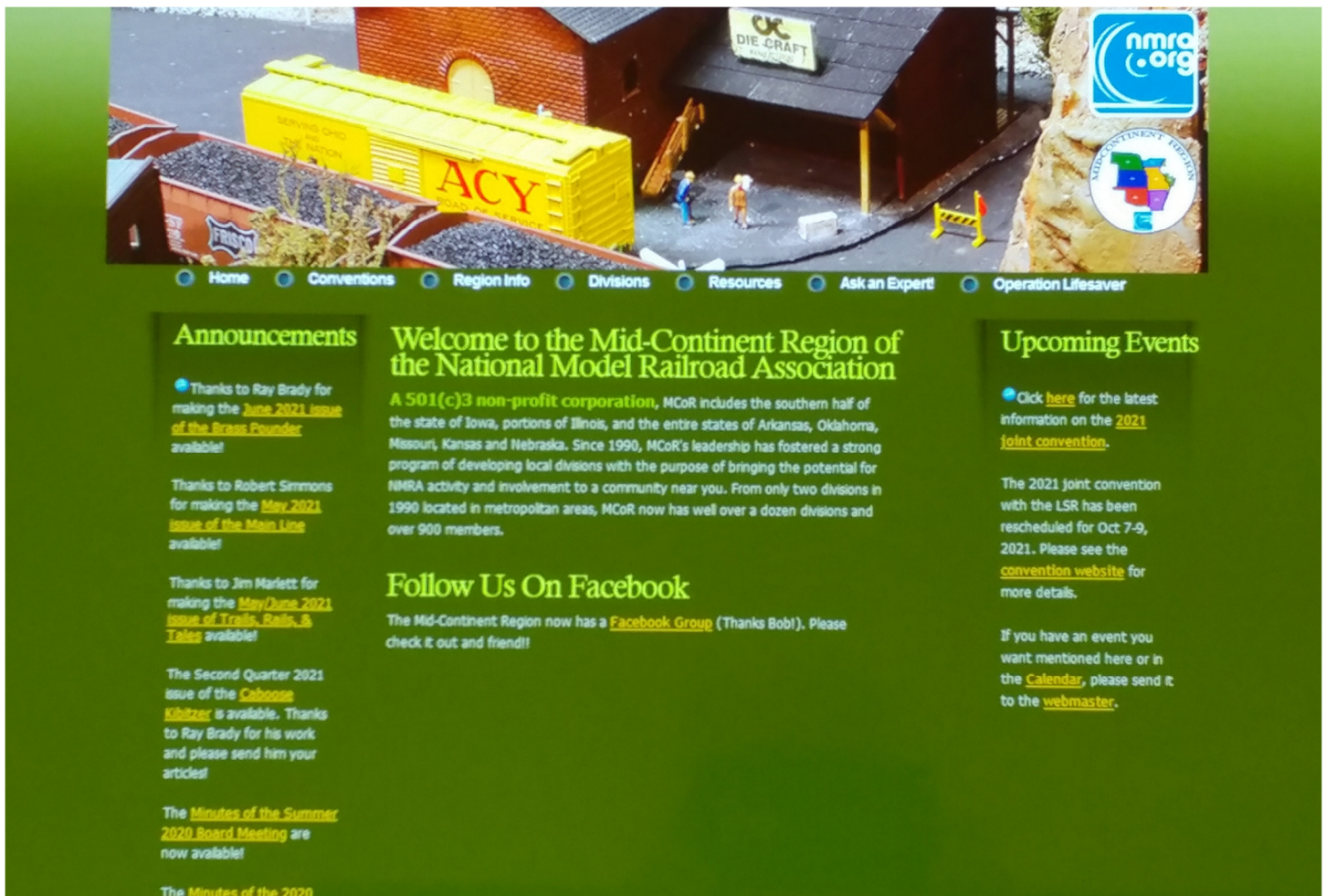
How to attend one or more Operating Sessions...

- Review the various layouts (on the right) and their details
- Make a list of up to four (4) layouts by railroad name, in the order you would like to operate on them (3 + 1 alternate)
... you can select fewer layouts if you want to operate less times
- Review your travel plans and review the Operating Session days and times, found on the [TimeTable](#) page
- Make a list of the days and times you will be in Tulsa and able to committ to attend a 3 hour session, *plus the drive time*
- When you register, select **both** the layouts, plus days and times you will be available to commit to attend sessions.

	Dale Baker	Tulsa Port of Catoosa RR	HO
	Steve Campbell	Cherokee Sub Frisco	HO
	Sammy Carlile	Santa Fe Hereford Subdivision	HO
	Steve Davis	KCS 3rd Subdivison	HO
	Kenneth Ehlers	Pandora & San Miguel Rwy	Sn3
	Tom Fausser	South Brooklyn Terminal	HO
	Steve Gillett	Spaendahl Yamanee & Densum	N
	GCMRC	Green County Model RR Club	HO
--	Lane Littlefield	Tennessee Central Railway	N
	Jon Pansius	Tulsa Junction Railway	HO
--	Allan Roecker	Kansas Central Div – Coffeyville Sub	HO
	Dave Salamon	Deep River Southern	N
--	Sam Simons	Connell Northern	N
	Jim Sinclair	Southern Pacific	HO
	Randy Smith	Rio Grande Southern	Sn3
	David Steensland	Silverton & Lake City	HOon3

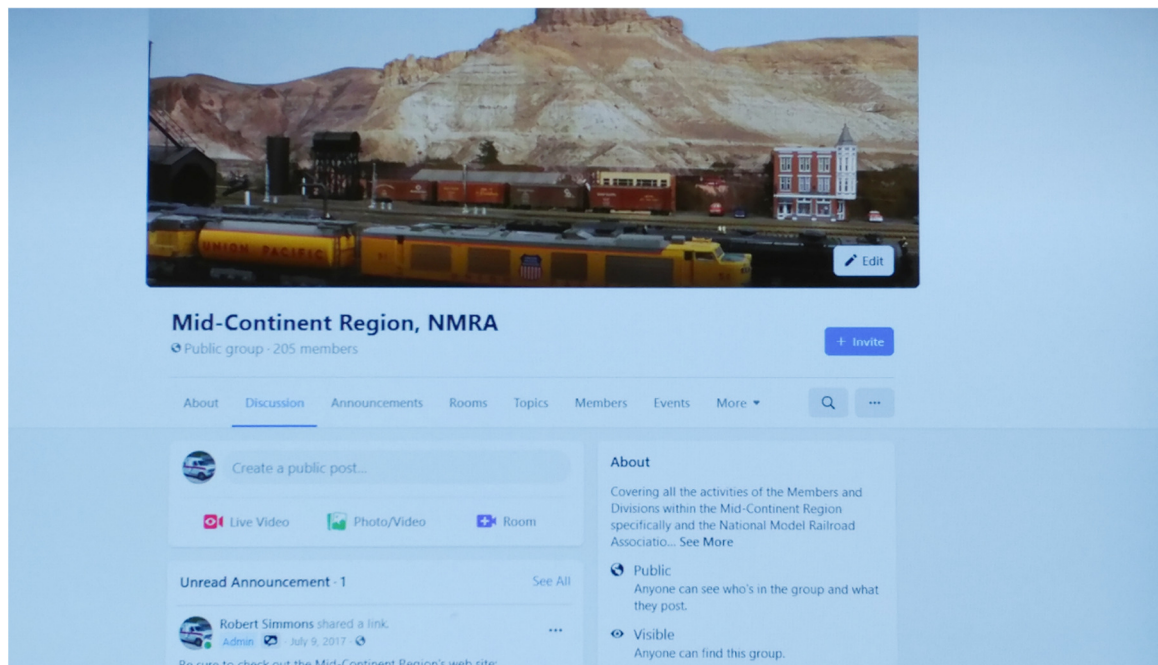
Go to: <http://www.2021tulsaunion.com/> and get registered today!

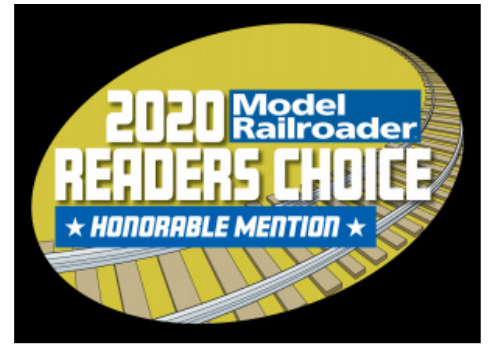




Keep track of the Mid-Continent Region from their website: <http://mcor-nmra.org/>

Or their **Facebook** page: <https://www.facebook.com/groups/1851848998468077>





Spring Creek Model Trains

Whether you are one of our “show” regulars or a first-time visitor, we gladly invite you to come on in and browse around. You can follow us on Facebook by joining our page. We use Facebook and our newsletter to let you know when we have new announcements on the web site and any changes in our show schedule. Our newsletter is also used to send new product announcements and arrivals.

Open House & Train Show...

**It is that time again, we are hosting our Biennial Train Show in
Deshler.**

Train Show – Open House

July 24th and 25th 2021

For show information about layouts, clinics, and manufactures

Click Here: <https://www.springcreekmodeltrains.com/train-show/>



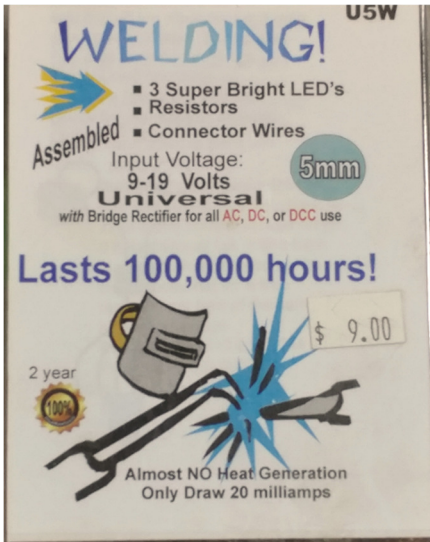


Our mission is to preserve and promote the heritage of the Missouri Pacific Railroad and its affiliates. This includes the Texas & Pacific, Chicago & Eastern Illinois, Kansas Oklahoma & Gulf, Alton & Southern and many other roads that were part of the MP family.

Please consider becoming a member and help us keep this history alive.



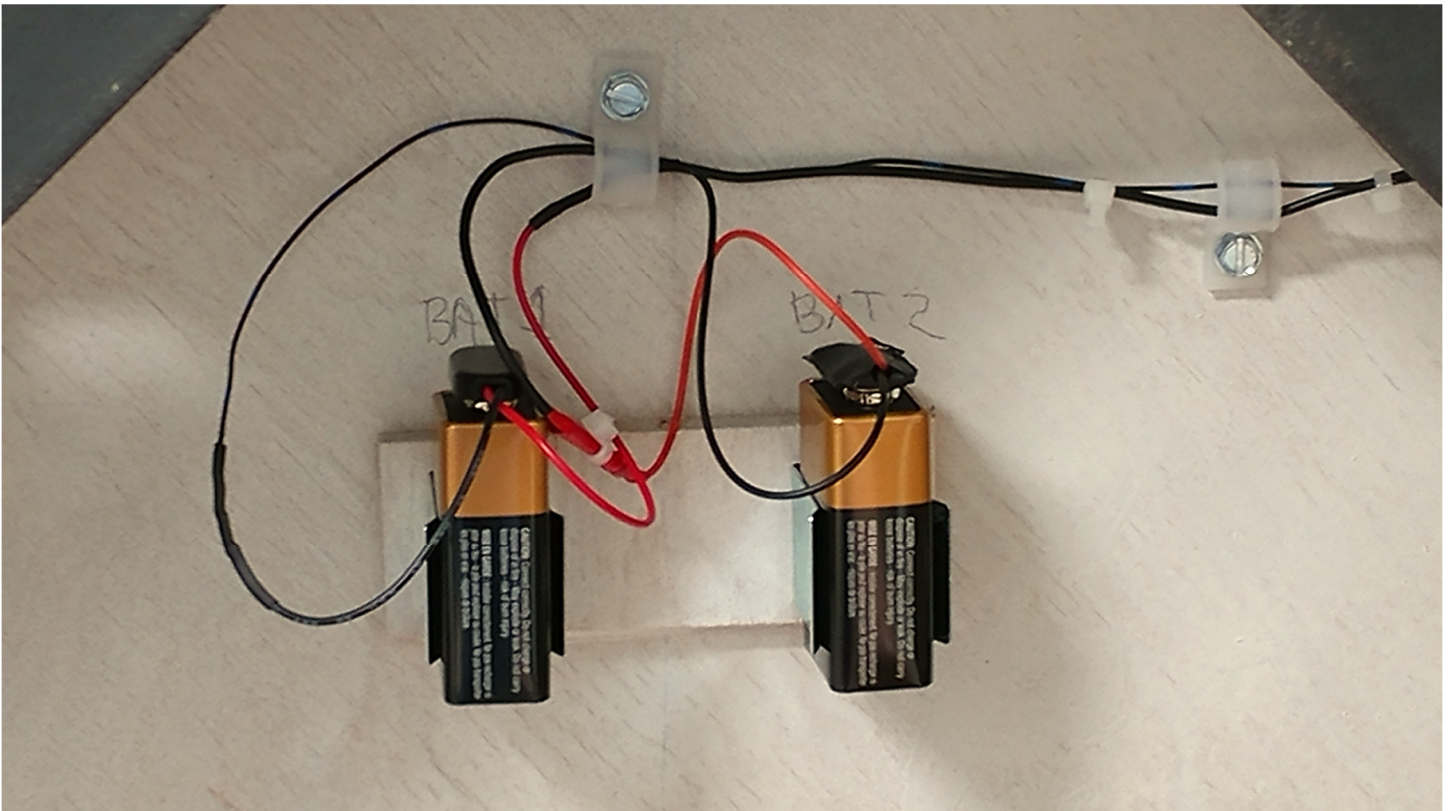
WKR Update



As noted on the cover, the recent streetlight project is now complete, so the electrical crew decided that since the electric toolbox was out, why not complete a three-year-old project.

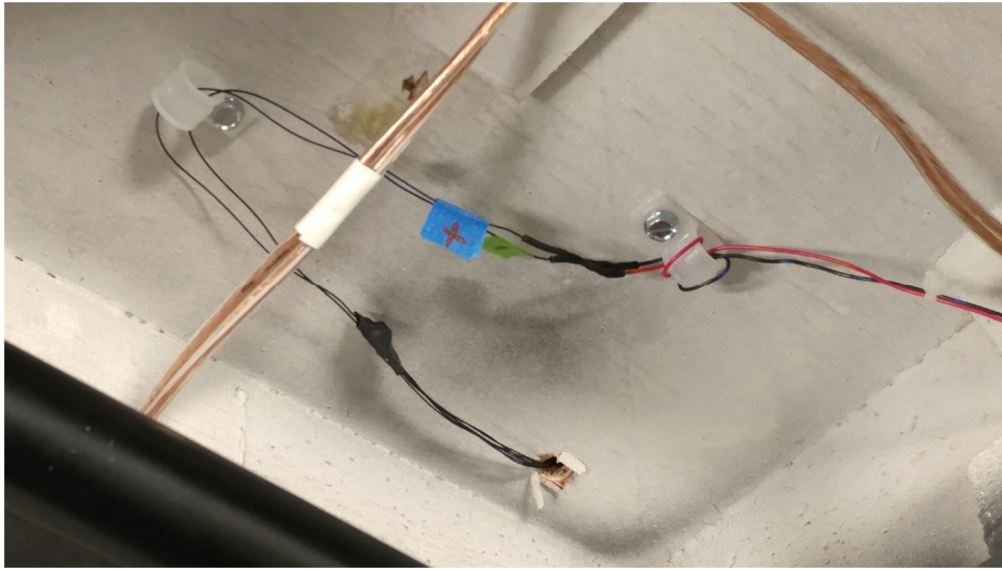
Three years ago, the WKR had added a welding flash LED kit to the American Implement dealer on corner section 9. It's a very simple LED kit and the crew got it installed in short order, but it was felt at the time that the flash was too weak to be seen in the brightly lit train show buildings.

The key was the voltage. The kit says it runs on 9 to 19 volts, so the original used a single 9-volt battery. Some more parts were acquired, and the circuit was expanded to two 9-volt batteries in series for 18-volts. Battery clips were installed to hold the batteries, and the new wiring installed.



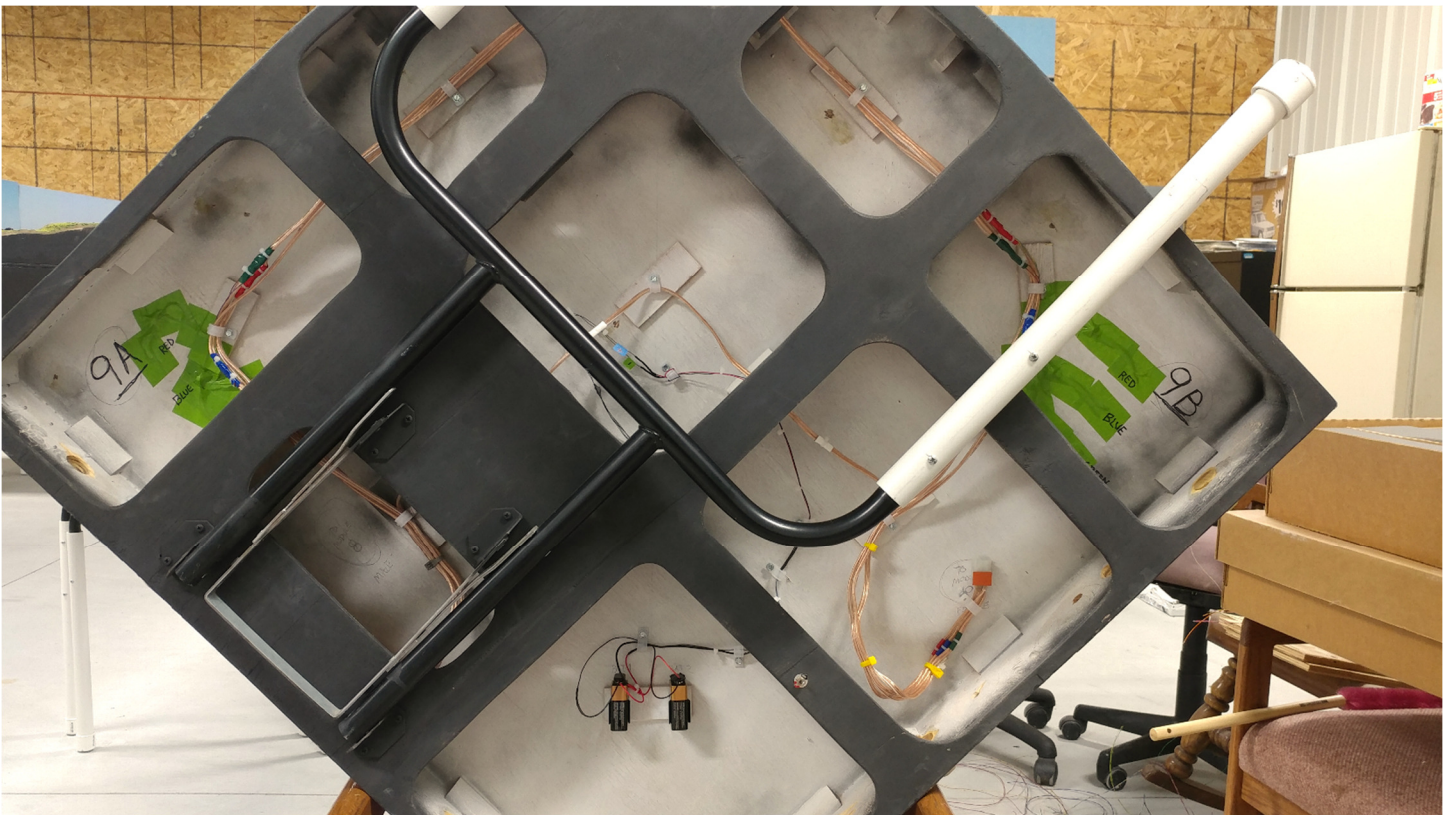
(Above) The original battery was held in-place with masking tape, so two battery clips were installed, and the batteries were wired in series.

WKR Update



(Above) The wires from the LED circuit exit from the hole which is under the repair shop building and are connected to longer wires. The kit included a on/off switch which we chose not to use as it's too hard to reach.

(Below) The underside of corner section 9. We installed a small on/off toggle switch on the black strip to the right of the batteries which is reachable when set up but protected by the folding leg during transport.



WKR Update



(Above) You can see the bright light coming up from under the green John Deere tractor in the shop. The increased brightness can be seen well in normal room light. This project is also added to the “completed” list.

(Below) Track repairs on the WKR are rare but they do happen. On straight yard section 15, it seems that one rail gets snagged on something during transport. This is the joint where the yards join the junction of sections 14 and 1. In this photo, the rail has been cleaned and flux paste has been applied before soldering

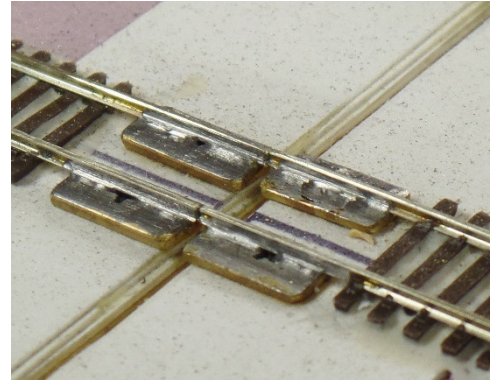


WKR Update



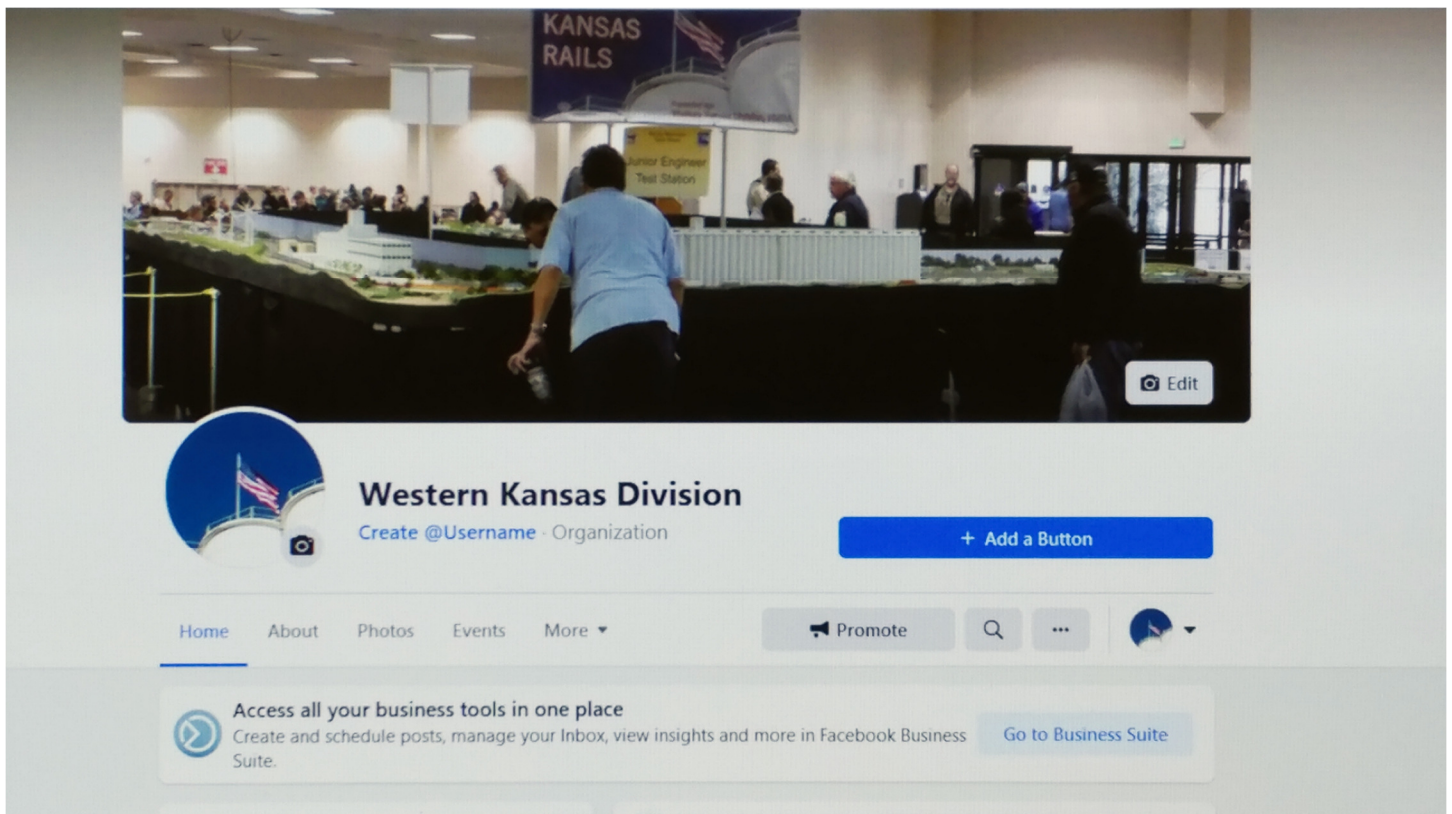
(Left) Realignment was achieved and the soldering is complete. The excess solder will be cleaned off.

(Right) Before the scenery was applied, this is what the joint looked like. One-quarter-inch wide brass strip was drilled and cut to length and each strip is secured to the layout with one-inch steel screws. This method provides a stable and secure anchoring of the rail ends.



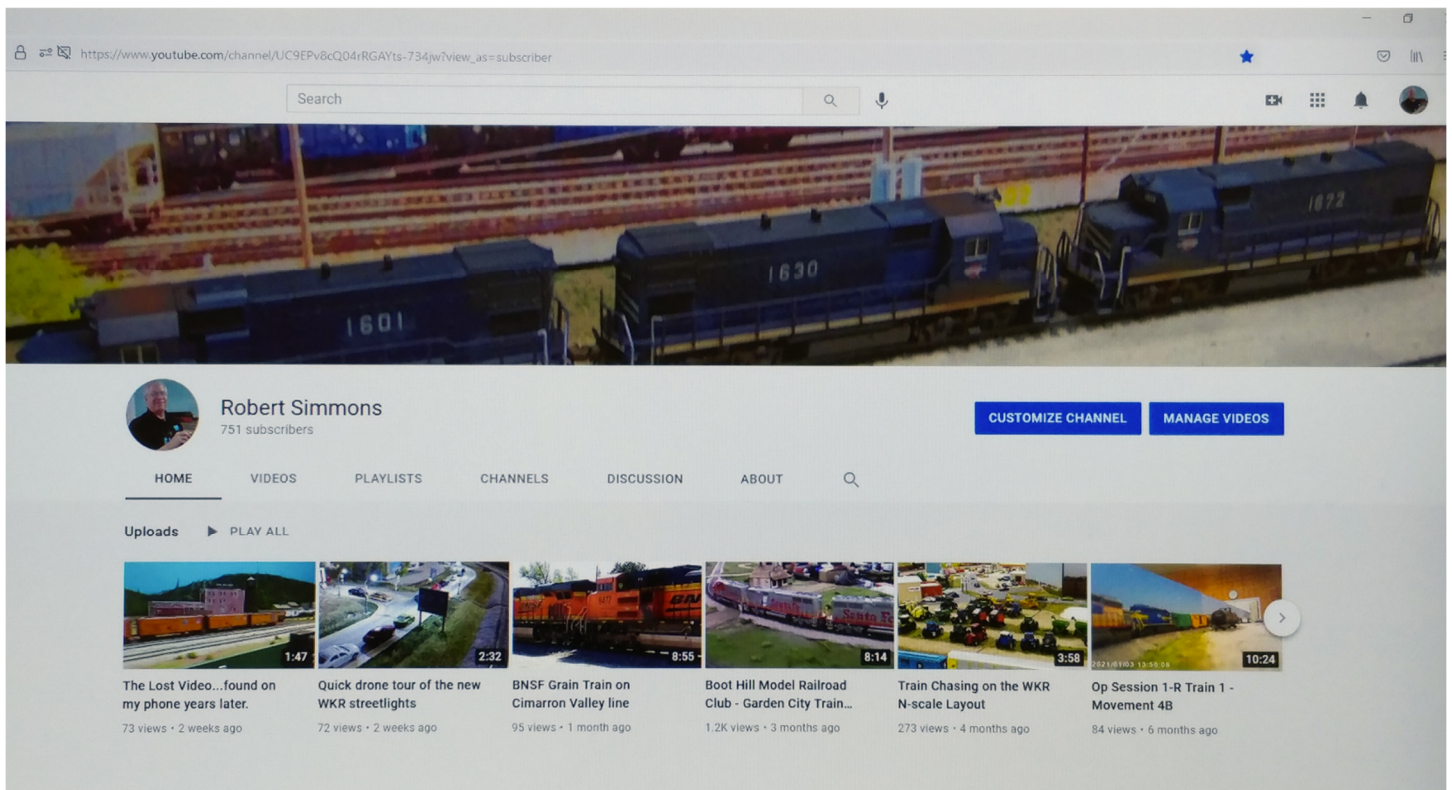
(Below) The repaired rail has the excess solder removed and the line is back in service. Touching-up the rail paint is on the to-do list.





You can follow the Western Kansas Division on **Facebook**, just click on the link:

<https://www.facebook.com/Western-Kansas-Division-592835177514577>



There are two new videos to view on the Western Kansas Division **YouTube** page:

https://www.youtube.com/channel/UC9EPv8cQ04rRGAYts-734jw?view_as=subscriber



June's
Running Extra:
Delayed 1 mth
(click to
learn why)

**SUBSCRIBE
and save
80%!**

Subscribe and save BIG



▶ Start reading now

Read the current issue online

<https://model-railroad-hobbyist.com/>

Access back issues page

All FREE!

**... over 200 pages of FREE model railroading
how-to information every issue!**



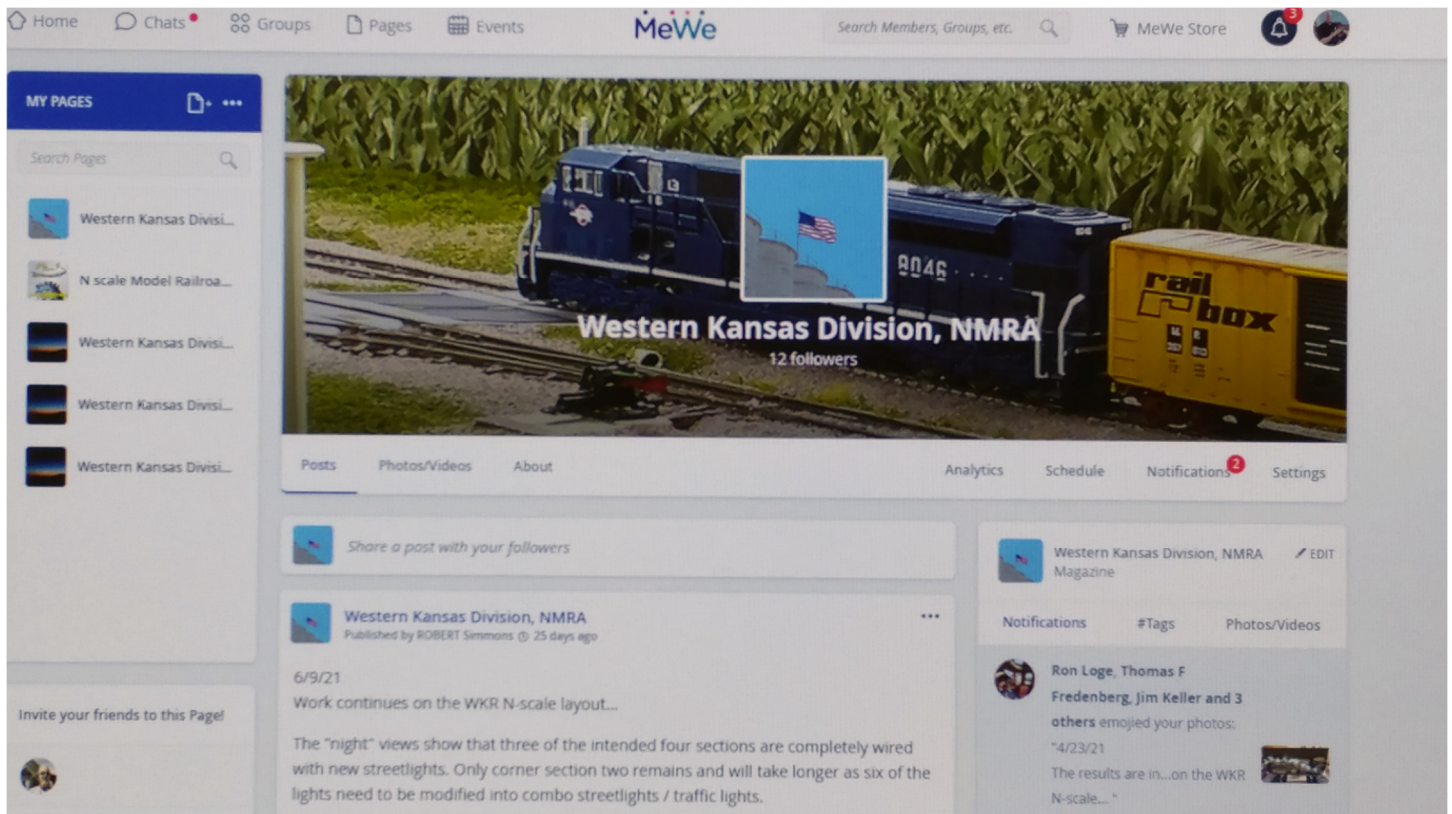
[The Santa Fe Railway Historical and Modeling Society](#)

The Santa Fe Railway Historical & Modeling Society is an independent non-profit corporation devoted to preserving, studying, and sharing information about the former Santa Fe Railway; from its rich history and fascinating operations, to its distinctive equipment and facilities.

Visit their web page here:

<https://sfrhms.org/>





There is an alternative to Facebook, it's **MeWe** and the Western Kansas Division has a page...

<https://mewe.com/p/westernkansasdivisionnmra>



Interested in operating your layout, visit the **Facebook** page of the **Operations Special Interest Group (OPSIG)**:

<https://www.facebook.com/OperationsSIG>

Or you can visit their website:

<https://www.opsig.org/>

**For an additional
\$4.95 we will
provide a receipt
that matches
what you told
your spouse you
paid.**

SPRING CREEK MODEL TRAINS

DESHLER ★ NEBRASKA

SpringCreekModelTrains.com

402-365-7628



M-F: 9am to 6pm Sat: 9am to 3pm



One of the
largest
H0 & N Scale
Inventories
Around!

Attend our
Train Show
July 24th & 25th, 2021

Manufacturers / Clinicians

Layouts / Custom Vendors

Sat. 9 to 5 & Sun. 10 to 4

**Thayer County Event Center
Deshler, NE**

Date Book

July 2021

6 th – 10 th Tue – Sat	NMRA National Convention (virtual) http://www.pcrnmra.org/NMRA2021/	Internet
24 th & 25 th Sat & Sun	Biennial Train Show (Spring Creek Model Trains) Race Street & 4 th Street https://www.springcreekmodeltrains.com/show-schedule/	Deshler, NE.

August 2021

1 st – 8 th Sun – Sun	Lionel Operating Train Society (LOTS) National Convention https://lots-trains.org/annual-convention/	Lawrence, KS.
--	---	---------------

September 2021

25 th & 26 th Sat & Sun	Wichita Toy Train Club Train Show http://www.wichitatoytrainmuseum.org/club-shows-1.html	Wichita, KS.
--	---	--------------

October 2021

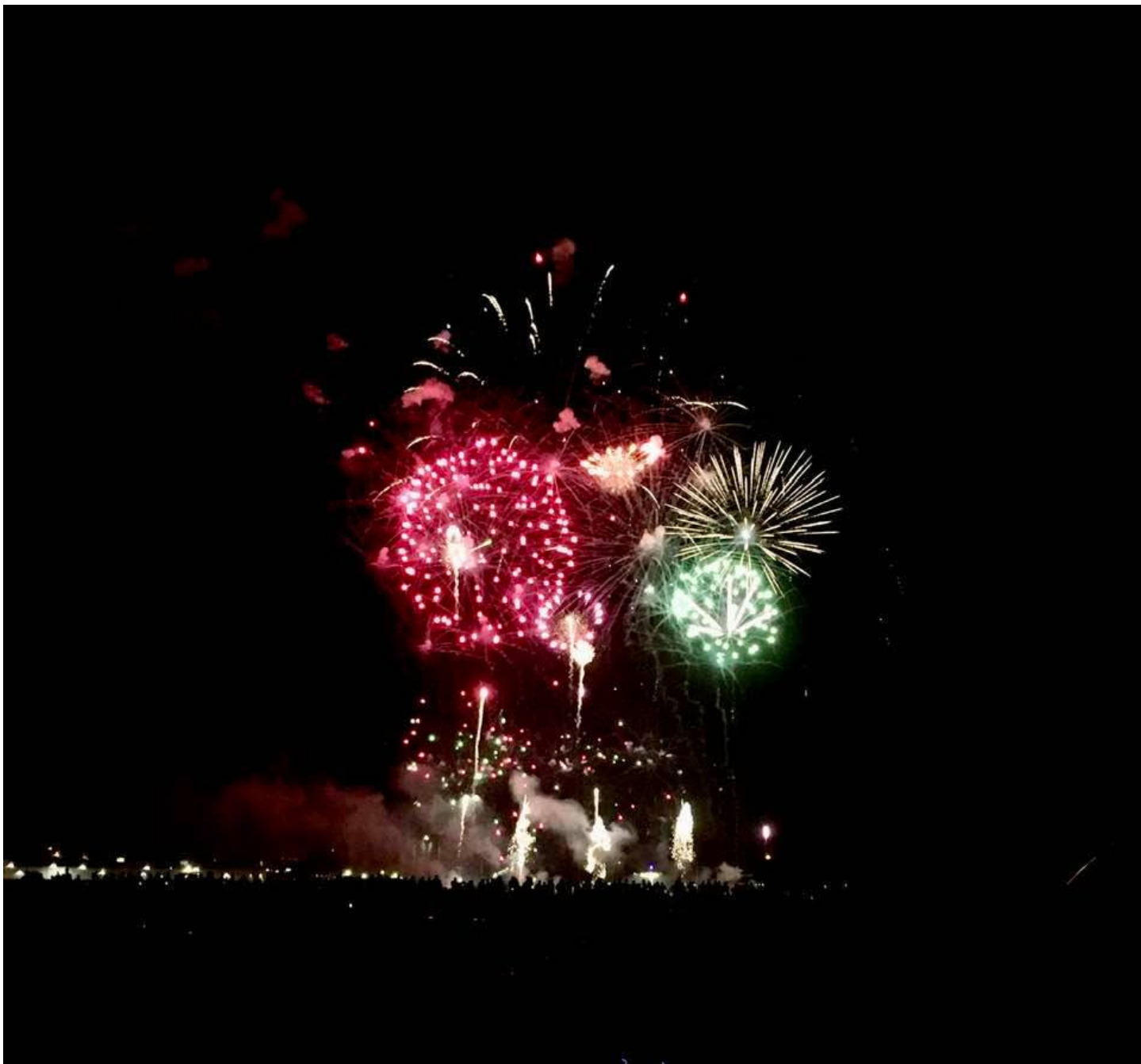
6 th – 10 th	Tulsa Union Convention (NMRA) Embassy Suites Hotel http://www.2021tulsaunion.com/	Tulsa, OK.
------------------------------------	--	------------

November 2021

13 th & 14 th Sat & Sun	Train Expo Colorado (TECO) Train Show http://tecoshow.org/	Colorado Springs, CO.
--	---	-----------------------



Visit their website: <https://nrail.org/>



Debbie Rathert Photo

On the Back Cover:

Courtesy of the Rathert Family of St. Louis, MO. a peek of the fireworks display in St. Louis on July Fourth. I hope you all have a great holiday, and God Bless America.

The *Main Line*

Publisher & Editor: Robert A. Simmons

The newsletter of the Western Kansas Division is published monthly for no charge by Robert A. Simmons, Division Superintendent / Director

Copyright 2021, by Robert A. Simmons, all rights reserved

If you have a change of e-mail address, or no longer wish to receive the newsletter, please contact Robert Simmons

Trainman55@hotmail.com or P.O. Box 157 – Dodge City, KS. 67801 or call (620) 521-3591

Please send all inquiries, ideas, or submissions to: trainman55@hotmail.com