



The

Main Line

July 2023



National Model Railroad Association

Mid-Continent Region

The Monthly publication of the



Western Kansas Division



On The Cover: Here is just one example of using scenery materials to hide/blend the junction of the layout surface with the backdrop.

In This Issue:

Oddballs.....Page 9

Ideas/Tips.....Page 19

Something New.....Page 26

WKR Layout Update.....Page 30

Date Book.....Page 38

The background of the cover is a detailed model railroad scene. It features a yellow and black locomotive pulling a green flat car and a black box car on a track. Below the tracks, a white semi-truck with a 'PACIFIC' trailer and a red car are on a road. The scene is surrounded by realistic-looking trees, grass, and a rocky embankment.

N SCALE RAILROADING

#146 OCTOBER 2022

THE BEST OF 1:160 SINCE 2000

George Hollwedel

- Preparing Flat Cars for Service

Ron Nowka

- Converting Micro-Trains Body Mount Passenger Cars to Truck Mounted Couplers.

Dirk Warwel

- Visualizing FREMO Modules with Cardboard Mockups

Click here to start reading today: <https://nsclerailroadingmagazine.com/>

[Forums](#)[Media](#)[Members](#)[Frisco Archive](#)[Support Frisco.org](#)[Links](#)

Welcome to Frisco.org

This category is for information about Frisco.org, including help, rules and how to get around.

Historical

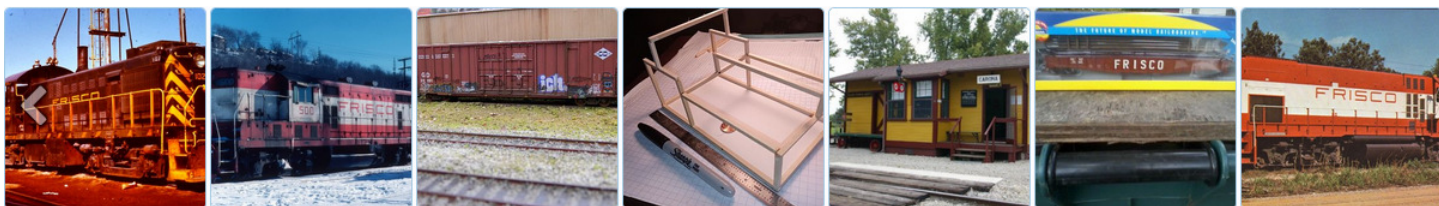
Operations, Divisions, Depots, Maintenance, Equipment, Locomotives, Freight, Caboose, Memorabilia, Folks, and Modeling

Modeling the Frisco

This section is for discussion and photos of less than 1:1 scale models of the FRISCO

The Interchange

This is a section for archiving old FMIG and All Aboard newsletters, exchanging information about Frisco people, memorabilia, exchange of goods.



For everything Frisco, check out Frisco.org: <http://www.frisco.org/shipit/index.php>



KANSAS CITY FLYER 2023

MID-CONTINENT REGION ANNUAL CONVENTION

JULY 27-29, 2023



Holiday Inn & Suites

The Registration form also gives information for registering at the convention hotel. The convention rate is \$99.00 with breakfast included. If you call for reservations, ask for the convention rate by using the group code: MCoR. To register online, [use this link](#) enter your Check In and Check Out dates, and press the Search button. This will take you to the convention page with the \$99.00 convention rate. In order to secure this rate, hotel reservations must be made by **July 1, 2023**.

THE LAYOUT TOURS ARE ALL SET!

LAYOUT OPERATING SESSIONS

If you are interested in participating in an operating session, please contact Steve McKee at rgssmckee@gmail.com. There are limited spaces available for these sessions, so don't delay in contacting. Also, indicate if you have had experience in layout operation.

PROTOTYPE TOUR

Details are now available for the prototype tour to Mid-America Car Inc. This will be a great tour of their repair and refurbishment facility. The Prototype Tour will be limited to 30 people, so register today to make your reservation early to not miss out. See the [Prototype Tour tab](#) for details.

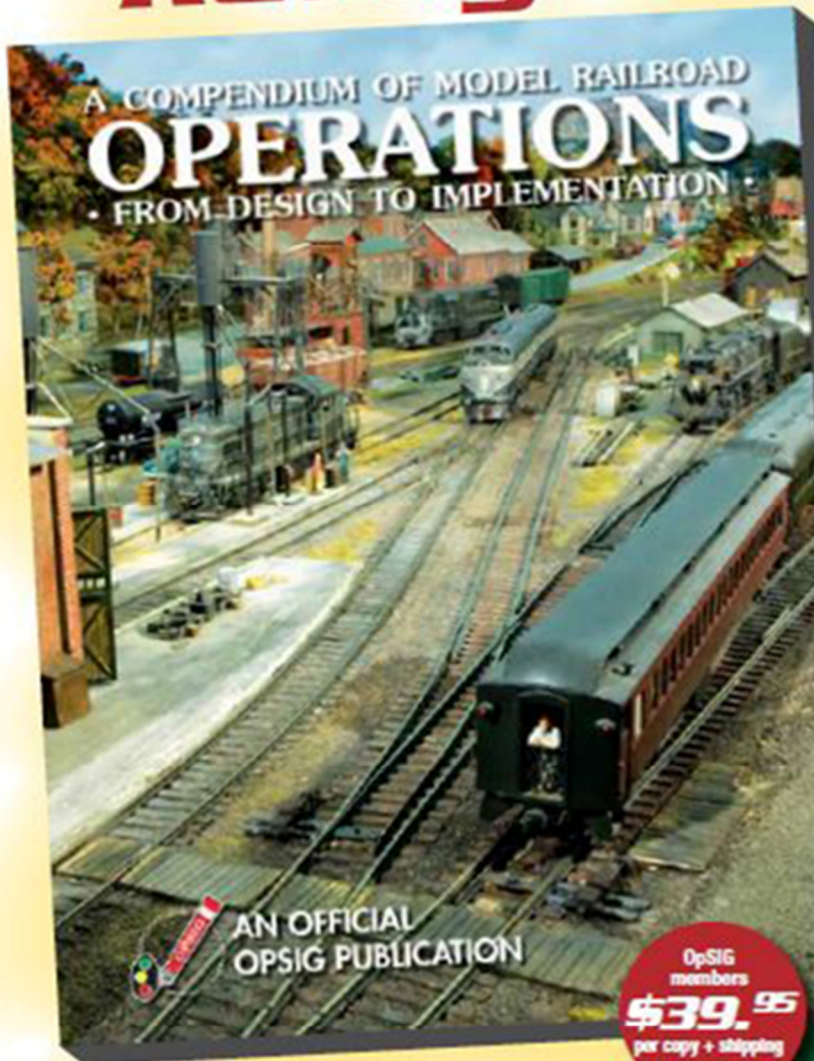
Register Today! <https://2023mcorconvention.com/>

**SOME THINGS ARE
BETTER LEFT UNSAID**



**WHICH I GENERALLY
REALIZE RIGHT AFTER
I HAVE SAID THEM**

Dispatcher to OpSIG Publication No. 2, you're ...
Ready to Roll!



All model railroaders, whether expert or beginner, will find a wealth of useful information in the OpSIG's second publication, **A Compendium of Model Railroad Operations - From Design To Implementation**. A complete guide to all things operations, our latest offering covers every aspect of prototype operations and how to apply them to your model railroad—from design and staffing to yards and paperwork, from communications and signals to dispatching and car forwarding—in 310 full-color pages. Written by ten of your fellow modelers and professionals, **The Compendium** contains more than 350 photos, 120 illustrations, and countless tips, pointers, suggestions, and prototype information to help guide you on your journey. A must for any modeler interested in prototype operations, add it to your library today!

OpSIG
members
\$39.95
per copy + shipping

Non-
members
\$49.95
per copy + shipping

Shipping: US (\$8)
Canada/Mexico (\$21)
Overseas (\$28)

For shipping rates on multiple books,
as well as better international shipping,
please contact Steve Benezra.

To Order: Please mail a check or money order, payable to OpSIG, with number of copies and your mailing address, phone number, and e-mail to:

Steve Benezra
2737 Thistle Trail
Hillsborough, NC 27278-9302
Opsig.editor@gmail.com

For Paypal orders, please add \$1 to the cost of the book and send to OPERSIG@yahoo.com. Provide your mailing address and telephone number in the subject box.

The OpSIG is a 501(c)3 non-profit corporation. For information on how to join the OpSIG, please visit www.opsig.org.

We are hosting our Biennial Train Show – Open House July 8th and 9th 2023

Location

The main show will be held about 6 blocks south of the store at the Thayer County Fairgrounds Expo Building located at [4th & Race Street, Deshler Nebraska](#). Concession stand will be provided by the American Legion Auxiliary.

Hours

Show Hours

Saturday, July 8th from 9:00am – 5:00pm

Sunday, July 9th from 10:00am – 4:00pm

Admission Price

\$6.00 – Includes the show and clinics, and is good for both days.
Kids 12 & under are free.

Clinics Layouts

Frankfort Subdivision

O Scale Switching Layout

Dakota Southeastern Division

Live Steam

Gulf Western

T-trak

Topeka Model RRs

T.O.A.D. Models

Manufacturers and Vendors

Arrowhead Models – Represented by Blaine Hadfield

Athearn – Represented by Jim Wiggin & Mark Williams

Azatrax – Represented by John Parsons

Class One Model Works – Represented by Stephen Priest, Mike Brusky, Cody Cameron, Brad Voth, & Craig Sutherland

Colorado Model Railroad Museum – Greeley Colorado – Represented by Jon Myers

Custom-Trains – Represented by Justin Keeler

Dubkir Media – Represented by Kirk Orndorff

EO Custom Trains – Represented by Eric Ogundipe

ESU Loksound – Represented by Jurgen Lindner, Manny Hommel, & Lee Ryan

Home Shops – Represented by Chris Palmieri

Intermountain – Represented by Kirk Orndorff and Chris Palomarez

Iowa Scaled Engineering – Represented by Michael Petersen and Nathan Holmes

Jaeger HO Loads – Represented by Don Jaeger

JP3D – Represented by Jimmie Pottberg

Railfan Models – Represented by Brien Wood

Rapido – Represented by Dan Darnell & Matt Gentry

Roka Prototype Models – Represented by Dr. Robert Sterns

Scale Trains – Represented by Shane & Michelle Wilson

Soundtraxx – Represented by George Bogatiuk

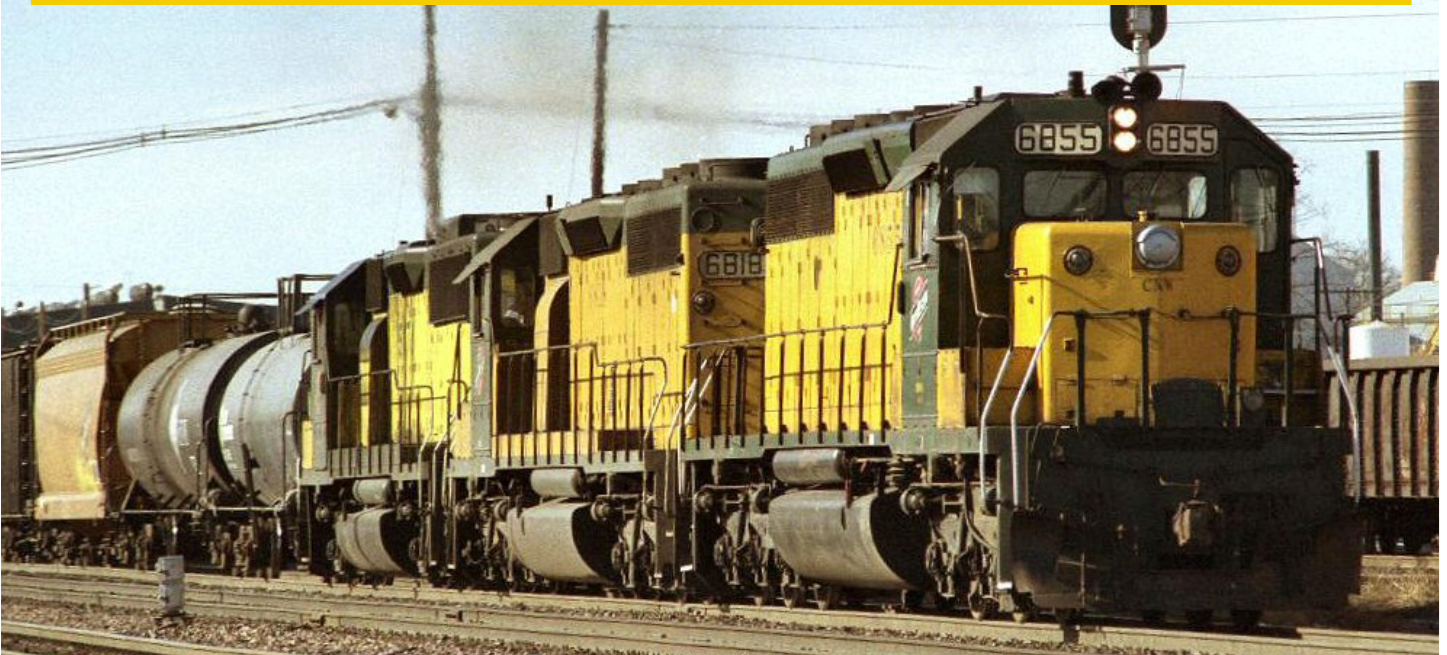
Traintraxx – Represented by Carlton Brown

White River Productions – Represented by Tony Cook

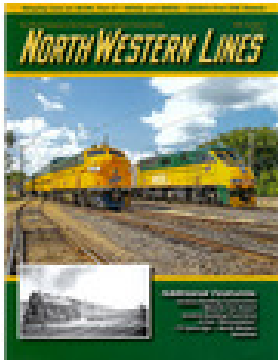
Click here for the SCMT website for complete details: <https://www.springcreekmodeltrains.com/train-show/>



CHICAGO & NORTH WESTERN HISTORICAL SOCIETY



The Society's purpose is to collect, circulate and preserve the history of the **C&NW** and its predecessor and successor lines; to create and publish a magazine; and to promote fellowship among C&NW fans and Society Members.



North Western Lines is a quarterly publication, which began in early 1974 as a seven page mimeographed issue, totaling 85 copies. Today it is considered one of the premier historical publications. Each issue contains current news, feature articles, a photo section, and a combination of rosters, technical information, maps, schedules, and modeling information, depending on the make-up of that issue. A one-year subscription comes with membership. And members are welcome to submit news items and articles.

Your **Chicago & North Western Historical Society** membership gets you quick access to the latest publication of our great *North Western Lines* magazine which we publish four times each year. In addition, on our website for modelers we publish our **CNWHS Modeler** which features great modeling ideas and projects. You also get discounts on some items in our Company Store such as calendars.

Click here for the CNWHS website: <https://cnwhs.org/wp1/>

For the Facebook page of the CNWHS, click this link: <https://www.facebook.com/cnwhs>

Check out what all is happening at the convention
on the Around the Layout podcast!

RILEY TRIGGS & CHRIS ATKINS

THE TEXAS EXPRESS NATIONAL CONVENTION

AROUND THE LAYOUT PODCAST

aroundthelayout.com/podcasts

SUPERCHARGED - HIGH SPEED
TEXAS EXPRESS
AUGUST 20-26
Dallas Fort Worth **TEXAS**

They say "Everything is bigger in Texas" and the Supercharged, High Speed **Texas Express 2023 NMRA National Convention** is setting up to keep that promise. We talk to Riley Triggs and Chris Atkins and get the lowdown on all the exciting activities happening in the Dallas/Fort Worth area during the week of **August 20-27**.

There's an amazing list of prototype events, layout tours, operating sessions, clinics and so much more that you will not want to miss. Chris also tells us about the preparations he's making on his own layout.

Don't miss the Texas Express 2023 NMRA National Convention

Register today: 2023TexasExpress.com!!!



Oddballs

Every so often an idea or product just doesn't catch on and is not mass produced.

Green Diamond

From Wikipedia, the free encyclopedia

The ***Green Diamond*** was a streamlined passenger train operated by the **Illinois Central Railroad** between Chicago, Illinois and St. Louis, Missouri. It operated from 1936 until 1968. It was the Illinois Central's first streamliner. Initially it operated with Illinois Central 121, the last of the 1930s fixed-consist articulated streamliners built in the United States.



The ***Green Diamond*** first ran in regular service on May 17, 1936. It was the Illinois Central's first streamlined passenger train and proved popular with the traveling public to the point that demand outstripped the streamliner's fixed capacity.

The ***Green Diamond*** covered the 294 miles from Chicago to St. Louis in 4 hours 55 minutes, averaging 59 miles per hour. It required a single consist to operate, departing Chicago for St. Louis in the morning and returning that same evening.

The name honored the "green diamond" in the Illinois Central's logo as well as the *Diamond Special*, the Illinois Central's oldest train on the Chicago-St. Louis run.



Oddballs

Every so often an idea or product just doesn't catch on and is not mass produced.

Green Diamond

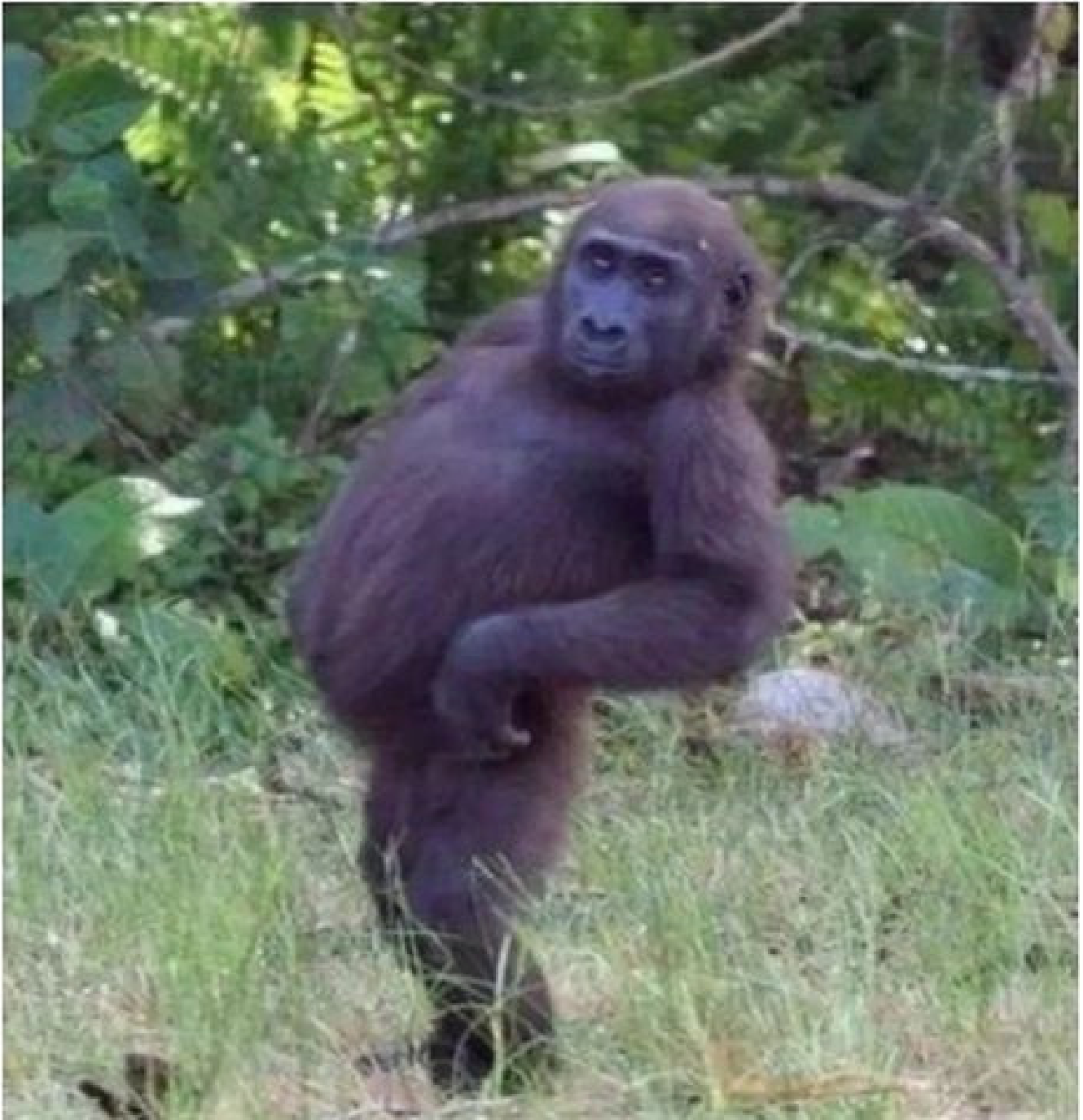
The train's fixed consist was:

- Car 121: **Power car** including driving cab, 1,200 hp Winton 201-A 16-cylinder engine and generator, auxiliary generator, and train heating boiler. Below the floor, the first truck was powered, but the second, articulated with the second car, was not. A 725 US gal fuel tank was also mounted between the trucks.
- Car 122: **Storage, Baggage and Mail car** of which approximately half was the mail compartment.
- Car 123: **Coach** including conductor's office, seating 56.
- Car 124: **Coach** including restrooms, seating 60.
- Car 125: **Diner-Lounge-Observation** including restrooms, kitchen, dining area seating 8, and observation lounge seating 20. All passenger-carrying cars were air-conditioned, with radio communication between them. Full width rubber diaphragms joined the cars, and all cars were articulated (sharing a truck with the neighboring car).

Pullman-Standard constructed the *Green Diamond's* original fixed consist.

In 1947 the Illinois Central replaced this trainset with a set of conventional cars. The four coaches came new from Pullman-Standard, while the remainder the Illinois Central rebuilt from heavyweight cars in its own shops:

Me looking in the mirror
trying to convince myself
I don't have a dad bod





[Home](#) [In The News](#) [Education](#) [Standards](#) [Regions](#) [Conventions](#) [Calendar](#) [Membership](#) [Contact](#)

GETTING STARTED

IN MODEL RAILROADING

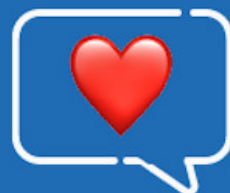
N-Scale Archite
Train Show
Tichy Train Grp
Train Installati
TrainMaster TV
UGears
Unreal Details
USA Airbrush
WiFi Model RR

DONATE TODAY
EVERY GIFT HELPS

Rusty Stumps
Scale Model Plans
Scalecoat Paint
Scenery Solutions
Showcase Miniatures
Stepcraft
Team Track

Discounts for NMRA Members

NMRA's own server on Discord



Text - Voice - Video

nmra
magazine 

Download on the
App Store



GET IT ON
Google Play

The purpose of **NRail** is to promote N Scale model railroading in all forms, all standards wherever N Scale is present. **NRail** has been the voice of N Scale model railroading for over 45 years. Starting as **NTRAK**, it created the first national modular standard, provided the vehicle for N Scale to grow to the second most popular scale in North America, was the birthplace of **T-TRAK** and today is the home of N Scale model railroading. We welcome all N scalers!

**Support N Scale Model Railroading -
become a member today!**



**...of Modular Model Railroading,
Promoting N Scale Standards,
Starting with **NTRAK** in 1973!**



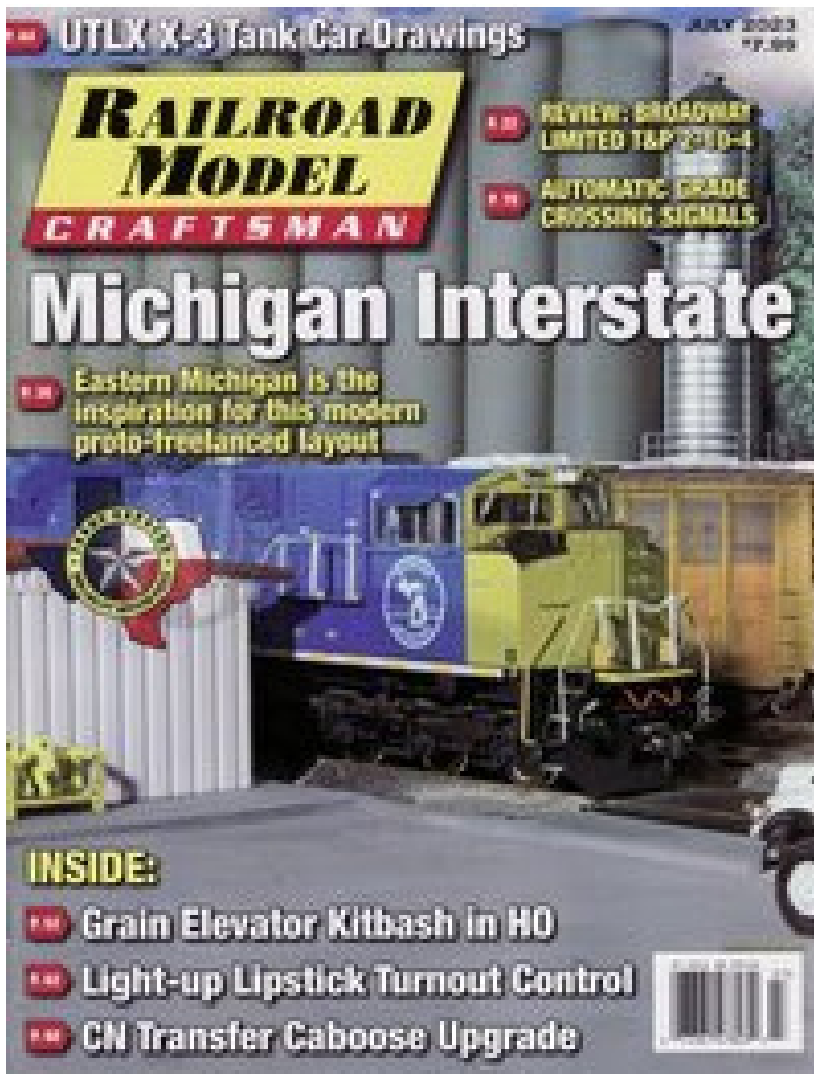
[**BECOME A MEMBER - JOIN US NOW!**](#)

Membership in **NRail** includes:

- One year of the Newsletter (6 issues).
- Monthly ZoomTRAK live broadcasts.
- Support of the National N Scale layouts at major shows.
- Access to the Members Only section of **NRail.org** (including over 270 issues of the Newsletter).
- Discount on merchandise in the [NRail store](#).

Check out the **NRail** website here: <https://nrail.org/>

The **NRail** Facebook page is here: <https://www.facebook.com/NRail.org>



WHITERIVER PRODUCTIONS

Michigan Interstate Railroad

DAN MUNSON - Greg McComas' HO scale layout delivers immersive operations in a limited space.

Union Tank Line X-3 Tank Cars

STEVEN HILE - An overview of early X-3 tank cars, including scale drawings by James Kinkaid.

Co-op Feed Elevator Kitbash in HO

TOM JOHNSON - Transforming common structure kits into a unique agricultural trackside industry.

Kitbash a Rio Grande Steam Generator

LUKE LEMMENS - A Proto2000 Alco PA B-unit is the base for a kitbashed steam generator car in HO.

Recessed, Light-up Turnout Controls

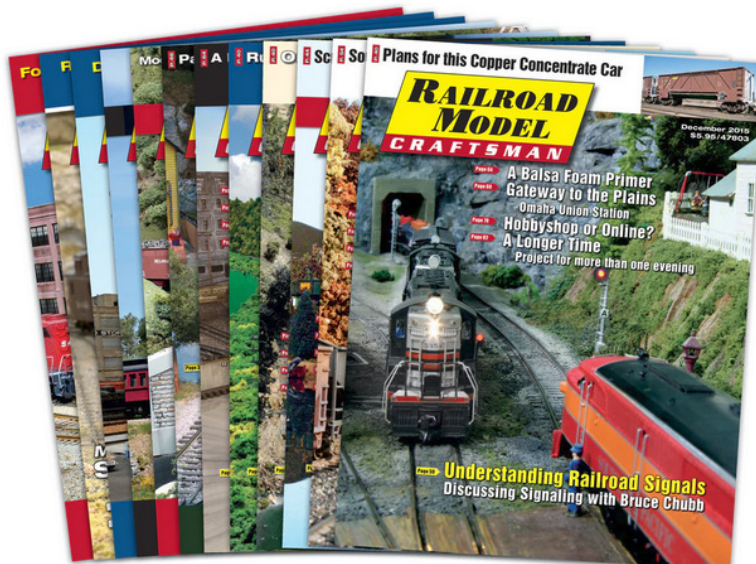
JIM HEIDT - Bi-color LEDs housed in up-cycled lipstick tubes for easy turnout control during nighttime ops.

Model a Modern CN Transfer "Van"

WILL LAWRENCE - Updating a resin craftsman kit to represent a modern Canadian National caboose.

Tauern Railway Tunnel Portal

ROSS POLLARD - Expert techniques to cast and carve plaster to make a unique masonry tunnel portal.



Back issues available

Click here to start reading today: <https://rrmodelcraftsman.com/>



Robert Simmons

@robertsimmons6464 939 subscribers 347 videos

This channel is about Model Railroading in general, and specifically the ant... >

Customize channel

Manage videos

HOME

VIDEOS

SHORTS







PLAYLISTS

COMMUNITY

CHANNELS

ABOUT



 WKR Operations Session 2 - Train 2 - Move 3 262 views • 2 days ago	 New Scale Trains GE Turbine 5-9-23 299 views • 1 month ago	 New Power for the WKR - Scale Trains C44 9Ws 263 views • 1 month ago	 WKR Operations Session 2 - Train 1 - Move 3 302 views • 2 months ago	 WKR Operations Session 2 - Train 2 - Move 2 1.5K views • 2 months ago	 WKR Operations Session 2 - Train 1 - Move 2 315 views • 2 months ago
---	--	--	---	---	--

Check out the activities of the Western Kansas Division through videos on the Robert Simmons YouTube channel. Operations, New Products, Train Shows, Layouts, and more!

Current subscribers

939

+13 in last 28 days



New Power for the WKR - Scale Trains C44 9Ws

https://www.youtube.com/watch?v=0aPWd48I_rA



WKR Operations Session 2 - Train 2 - Move 3

<https://www.youtube.com/watch?v=YoQi6PZXqEo>

<https://www.youtube.com/watch?v=wiuyeVBUV3I>



New Scale Trains GE Turbine 5-9-23

Click here to start watching today:

https://www.youtube.com/channel/UC9EPv8cQ04rRGAYts-734jw?view_as=subscriber

HO Scale - Athearn EMD GP40-2



The EMD GP series locomotives became some of the most successful designs of the age. Produced from 1970s to mid-1980s the GP40-2 was quickly found in many different tasks of the railroad. From switching to pulling high priority freight trains across the country, these versatile locomotives brought the goods to North America. Many of these locomotives are now being rebuilt with ecologically sound emission control for higher population centers. A new era emerges as technology meets proven reliability for these EMD products.

N Scale - Atlas 45' Pines Trailer



In today's economy, there are strong demands to move freight faster and more efficiently. Atlas' N 45' Pines Trailer will get the job done on your railroad. Built in true scale dimensions, the model has extremely accurate painting and printing.



HO Scale - Walther Mainline 72' Centerbeam

Shipping lumber by train is easy for your HO railroad with a fleet of Walther Mainline 72' Centerbeam Flatcars on the job! Designed to speed loading and unloading, these bigger cars entered service in the 1980s and quickly became a favorite with shippers and customers. These nicely detailed models are based on earlier cars built with oval cut-outs (popularly known as "opera windows") on the centerbeam to reduce overall weight, which are still in service with a wide range of railroads and lumber producers. Other features include:

N Scale - Athearn Fire Trucks



Available in Napa, Highspire, and Perryville Bicentennials! Factory assembled with many detail parts applied, molded cab interior with separately applied steering wheel, clear window glazing, and rubber tires.

Just Arrived - HO Scale InterMountain Railway GE ET44AC (Tier 4 GEVO)

Click here and start shopping today! <https://midwestmodelrr.com/>



[Shop](#) | [Catalog Request](#) | [Gift Certificates](#) | [Account Login](#) | [Video How-To's](#) | [On Sale](#)

4th of July
Holiday Weekend
Scenery Sale!

15% Off All Products Storewide
On All Web Orders Totalling \$100 or More!
At Checkout Enter Key Code **4JULY**

Happy **4th** of July

The banner has a background of a stylized American flag with light rays emanating from the center.

15% OFF!
Storewide Holiday Sale!

Martin Welberg
Scenic Studios

The banner features a background image of a rustic wooden building and a dirt road in a wooded area.

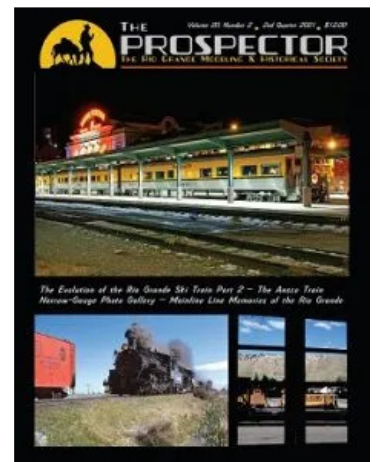
Click here for Scenic Express: <https://www.sceneryexpress.com/>



The mission of the **Rio Grande Modeling & Historical Society** is to preserve and disseminate historical information about the Denver & Rio Grande Western Railroad for the benefit of our members and to others by locating, gathering, preserving, interpreting tangible items relating to the D&RGW and distributing information, documents, publications thus promoting fellowship and education among persons with interests in the railroad.

The Prospector, our professionally produced and beautifully illustrated quarterly magazine featuring the finest work of historians and other experts on all aspects of the Rio Grande Railroad. We make available individual issues and volume sets of the magazine for purchase from our website—from the current issue to back issues of ***The Prospector*** over the past 20 years back to Volume 1 which was first published in 2002.

Bundle sets of ***The Prospector*** from **Volume 1** through **Volume 20** are available for purchase from our website and will vary by volume between prints or combinations of prints and CD (for out-of-print issues) per volume set. Pricing varies per set based on availability and good while supplies last.



Click here for the RGMHS website: <https://rgmhs.org/>

For the Facebook page of the RHMHS, click this link: <https://www.facebook.com/groups/rgmhs.org>

Ideas / Tips



Next time you are grocery shopping, keep an eye open for Bamboo Skewers (Left).

I stumbled upon these some years back and recently recalled how useful they have been. I keep a supply of the 12-inch skewers for holding trucks, but the smaller 4-inch skewers perform many tasks.

The smaller skewers are great for opening spouts that have become clogged with paint or glue, mixing paint in small bottles, applying glue precisely, and the list goes on.



(Right) The 12-inch skewers can be easily stretched by cutting each skewer in to two pieces, then take the blunt end and use a pencil sharpener to form a point, now you have two.

I use a tin can from the kitchen, washed out as a holder for about twenty skewers as you never know when you will need multiples (Below).

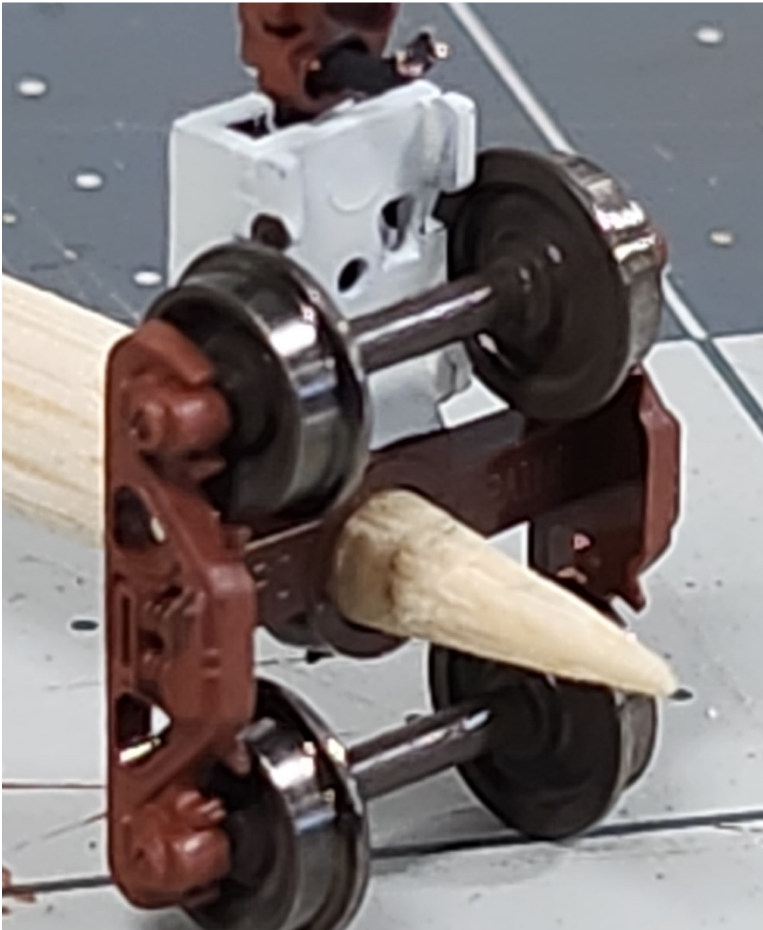


These are N-scale trucks being held with the skewers during truck side frame and wheel painting. The N-scale trucks only go about halfway up the point, while larger scales will slide further up.

Ideas / Tips

(Above) The standards of the WKR include painting the truck side frames, plus painting the wheel sets on the outer face, wheel back, and axles.

Using the skewers to firmly hold the truck assembly on it's side, you can apply the paint to the top wheels and axle, while slowly rotating the bottom wheel set with your thumb, thus getting complete coverage on all faces, then flip it over and repeat.



(Left) A completed unit without holding with your fingers.

Flex Seal now booking dives to the Titanic





The purpose of the **Operations Special Interest Group (OPSIG)** is to discuss, develop and disseminate ways of operating model railroads to realistically emulate practices of the prototype.

This includes sharing information on various methods of generating, moving, and controlling traffic to heighten the feeling that our models are an active and integral part of the national rail transportation network, serving shippers and consignees throughout the nation.

We also discuss and communicate information about the methods and procedures used by the real railroads and ways of most practically and realistically adapting them to the model world. So, if you like to operate the railroad you've created, this is a place to learn more and find others with similar interests.

We publish a quarterly magazine, *The Dispatcher's Office*, which in addition to containing articles and information on railroad operations (both prototype and model), contains listings of operating layouts, sessions, and events that members are invited to attend. Back issues are available.

In addition, the OPSIG web site serves as a clearinghouse for publicizing regional operating events and meetings, where layouts are open for guest operations.

Click here for the **OpSig** website: <https://www.opsig.org/>



For the Facebook page of the OpSig, click here: <https://www.facebook.com/OperationsSIG>

Trackside Model Railroading™

July 2023
Premium Edition

Volume 11, Number 7

**Stepping into Colorado on the RGS
Second District in Sn3**

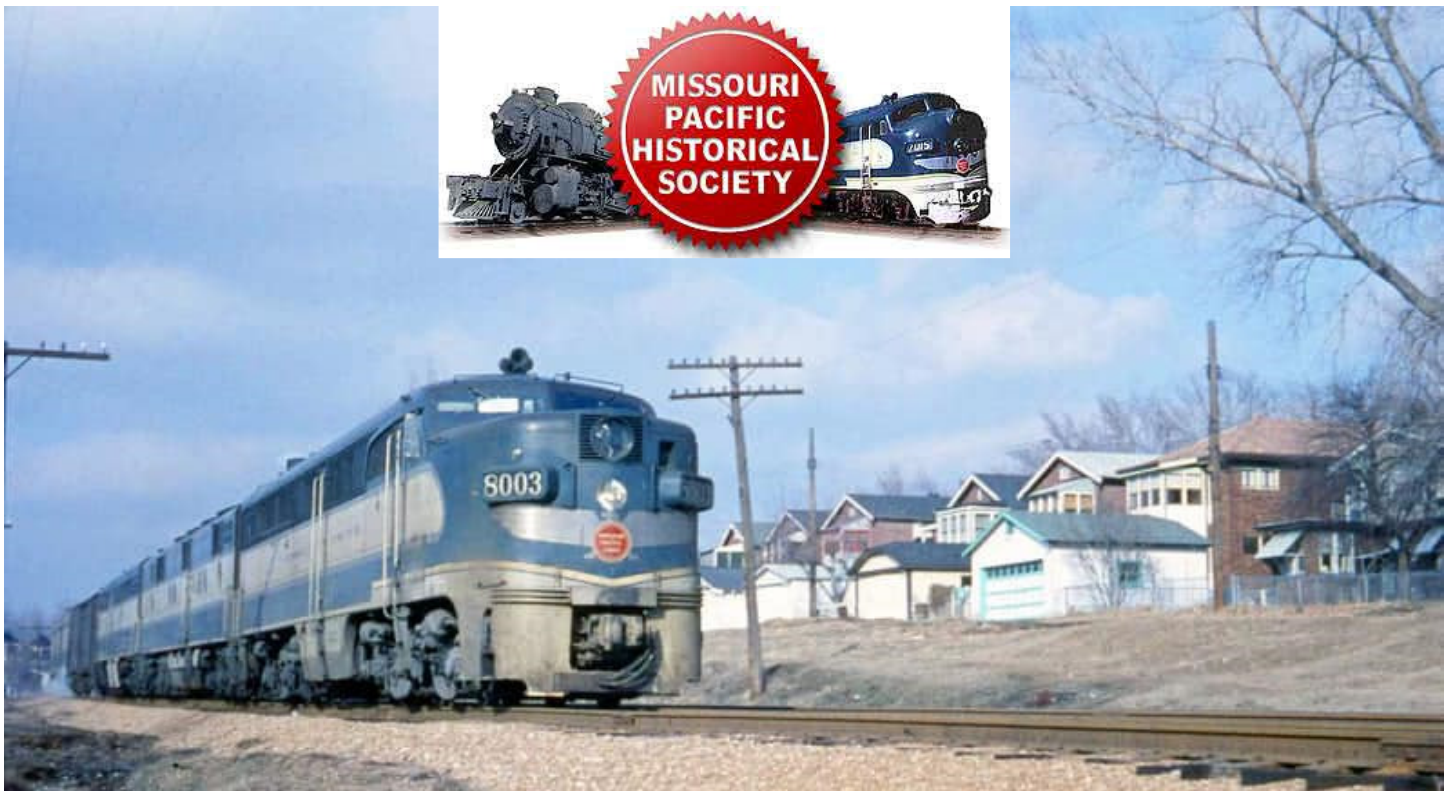
Soldering Wire Leads to Your Rail

Pacific Northwest Logging in HO Scale

Trackside Model Railroading

The July 2023 digital magazine is now out!

Click here to start reading: <https://www.tracksidemodelrailroading.com/magazine/customer-login/>



Our mission is to preserve and promote the heritage of the Missouri Pacific Railroad and it's affiliates. This includes the Texas & Pacific, Chicago & Eastern Illinois, Kansas Oklahoma & Gulf, Alton & Southern and many other roads that were part of the MP family.

Please consider becoming a member and help us keep this history alive.

**Our 43rd Annual Convention will be held in
Wichita, KS on October 5-8, 2023**

Mark your calendars, NOW! You won't want to miss this event.



**Drury Plaza Hotel Broadview Wichita.
400 W. Douglas Ave.
Wichita, KS 67202
Phone: (316) 262-5000**

For the MPHS website, click here: <http://www.mopac.org/>
Click here for the MPHS Facebook page: <https://www.facebook.com/groups/1778975332416533>



Western Kansas Division

1.5K likes • 1.6K followers



👍 Liked

💬 Message

🔍 Search

Follow the **Western Kansas Division**
part of the **Mid-Continent Region**
of the **National Model Railroad Association**

Click here for the WKD Facebook page: <https://www.facebook.com/profile.php?id=100064641403539>



Western Kansas Division, NMRA

29 follower

The Western Kansas Division also has a MeWe page: <https://mewe.com/p/westernkansasddivisionnmra>

Something New



Kelly Bruce reports: **Mike Yates** of (McPherson Ks.) is making a new O gauge elevated (L) line layout in the post-apocalyptic theme.

It is a 5foot x 9foot tabletop layout.

We have the track down and we are working on the foundation. Mike choose O-gauge do to it being close to the scale for War Hammer Table Top Skirmish game.

This is scheduled to debut at the McPherson show in January with people playing War Hammer on it.

Warhammer is a tabletop wargame where two or more players compete against each other with "armies" of 25 mm – 250 mm tall heroic miniatures. The rules of the game have been published in a series of books which describe how to move miniatures around the game surface and simulate combat in a "balanced and fair" manner.



Thank You Kelly, please keep us updated...



▶ **Start reading now**

Read the current issue online

Get the current issue

Click for more ways to read the current issue



Click to visit our premium web video channel

Running Extra!
Subscribe to new mag

Model Railroad Hobbyist Store

Click to visit our online store ...



May Running Extra:
\$2.99

SUBSCRIBE and save 80%!

Subscribe and save BIG



Click here to start reading: <https://model-railroad-hobbyist.com/>





Welcome to the Mid-Continent Region of the National Model Railroad Association

A 501(c)3 non-profit corporation, MCoR includes the southern half of the state of Iowa, portions of Illinois, and the entire states of Arkansas, Oklahoma, Missouri, Kansas and Nebraska. Since 1990, MCoR's leadership has fostered a strong program of developing local divisions with the purpose of bringing the potential for NMRA activity and involvement to a community near you. From only two divisions in 1990 located in metropolitan areas, MCoR now has well over a dozen divisions and over 900 members.

Click [here](#) to join the NMRA or renew your membership!

2023 Regional Convention

The [2023 Mid-Continent Region convention](#) will be held at the Holiday Inn at US69 and 87th Street in Overland Park, Kansas from July 27 through 29. [The convention website is now available](#). Interested in giving a clinic? See this [page](#) for more details.

Follow Us On Facebook

The Mid-Continent Region now has a [Facebook Group](#) (Thanks Bob!). Please check it out and friend!!

Click the link: <http://www.mcor-nmra.org/>

WKR Update



May was nearly a lost month on the **WKR** as the annual “Miller” moth migration swept through western Kansas. Our metal building is not airtight and these moths seek any crack or crevice. We were proud to do our part to cut down on the moth population. The building is sprayed for pests, so once they got in, they did not get out.

This picture was taken just a week after I had already swept out an equal number before. So we decided to wait until they flew on to Colorado.



(Left) One good thing about the month was the Memorial Day sale at Scenic Express. We have fallen in love with one of their products, the scenic materials from Martin Welberg Scenic Studios.

We tried them out last year and were very impressed how they added scenic depth.



(Right) The scenic materials are mounted on rubber-like pads, and you pull off the amount or shape you need, then glue in place.

The materials come in different heights, colors, and thickness.

With the sale price reduction, the WKR Purchasing Department was able to procure a sizable amount of new product to add to the original supply.



WKR Update



(Above) This area is behind Dodge City Concrete and is a narrow strip behind the track in front of the backboard. Using various sizes and colors the Scenery Crew were able to disguise the horizontal surface from the vertical backboard photo.

(Below) In another section the Welberg material relieves the “flat look” between the tracks as not all areas near businesses are fully groomed.



WKR Update



WKR Update



Click here for Scenic Express: <https://www.scenicexpress.com/>





Mid-Continent Region, NMRA

[Discussion](#) [Featured](#) [Your Items](#) [Events](#) [Media](#) [Files](#) [People](#)

Click this link for the Mid-Continent Region, NMRA Facebook page:

<https://www.facebook.com/groups/1851848998468077>



Welcome to the Union Pacific Historical Society!

Founded in 1984, UPHS is an independent, non-profit organization dedicated to preserving and sharing the history of the Union Pacific Railroad. The Society has about 1,900 members. Historians, railfans, employees, and modelers have found the UPHS to be a matchless source of accurate and in-depth material concerning historical operations, traffic, motive power, rolling stock and facilities of the Union Pacific and predecessor companies. Railroad employees, managers, and retirees are welcome.

The Streamliner is the official publication of the Union Pacific Historical Society, four issues are included with annual membership. Memberships and individual copies may be purchased from the Company Store.



Vol. 37 No. 2 – Spring 2023

From the Business Car (page 2)

Spring on the Mount Hood Railway (page 6)

Photos by Wayne Depperman, text by Marc A. Entze

It's a Clerk's World (page 10)

by George Foster

Union Pacific's Kalan Bridge (page 22)

by Marc A. Entze

From the Archives (page 30)

Click here for the UPHS website: <https://uphs.org/>

For the UPHS Facebook page, click here: <https://www.facebook.com/profile.php?id=100069786331658>



STORE HOURS

MONDAY	10AM-6PM
TUESDAY	10AM-6PM
WEDNESDAY	10AM-6PM
THURSDAY	10AM-6PM
FRIDAY	10AM-6PM
SATURDAY	10AM-4PM
SUNDAY	CLOSED

Retail Store Location

6060A West 55th Ave.

Arvada, Colorado 80002

(We are on the West side of the building.)

**ROCKY MOUNTAIN TRAIN SUPPLY STOCKS 1000'S OF
NEW PRODUCTS IN Z-N-HO-O-G SCALES.**

Click here for **Rocky Mountain Train Supply**: <https://rockymountaintrainsupply.com/>

Same great people...

Same store location...

Same store hours...

Same great service...



We want to buy your stuff!

N Scale Supply is looking to buy collections,
large and small, or just extra stuff you may have

News & Info

Catalog

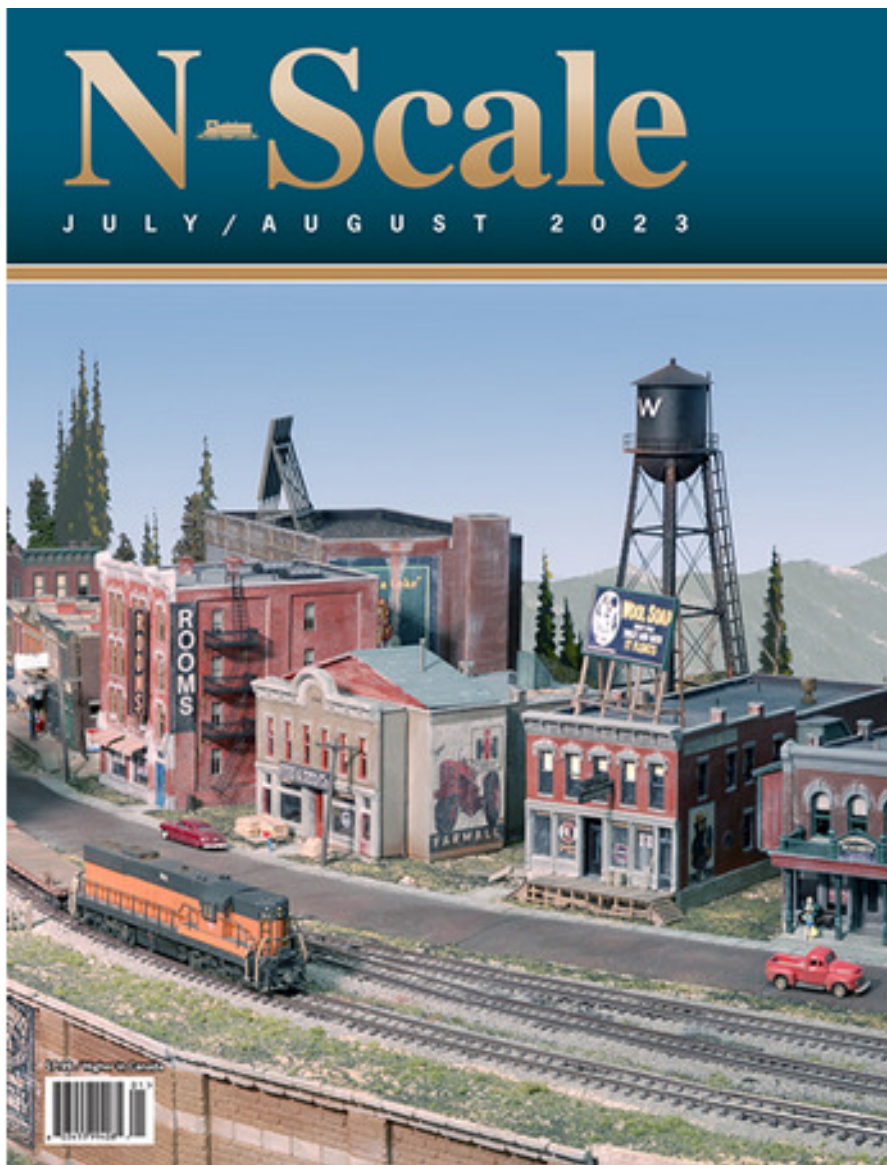
Search

Ordering Info

**Pre-Owned
Equipment**



Click this link for **N Scale Supply**: <https://www.nscalesupply.com/>



N-Scale

IN THE CURRENT ISSUE

Along the Line Series

Part 4: Freight and Passenger Trains
by Dan Lewis, MMR

Once Upon A Waterfront

Part 3: Building a Ship Dock
by Dennis Murphy

Bulletproof Switches & Controls

by Jeff Lee, MMR

A Detailed City Scene

in a Small Footprint
by Sean Croteau

Colorado Midland

by Dave Vollmer

The Short & Nn3arrow

Building Denver South Park & Pacific Coach 17 in Nn3
by Preston Sands

25 Years of *N-Scale Magazine* on CD

**N-Scale Magazine is now available on CD.
Order yours today!**



Click here to start reading: <https://www.nscalemagazine.com/index.html>

Date Book

July 2023

8th – 9th **Spring Creek Model Trains Train Show** Deshler, NE.
Sat – Sun <https://www.springcreekmodeltrains.com/>

27th – 29th **Kansas City Flyer – Mid-Continent Region Convention** Kansas City, MO.
Thu – Sat <https://2023mcorconvention.com/>

August 2023

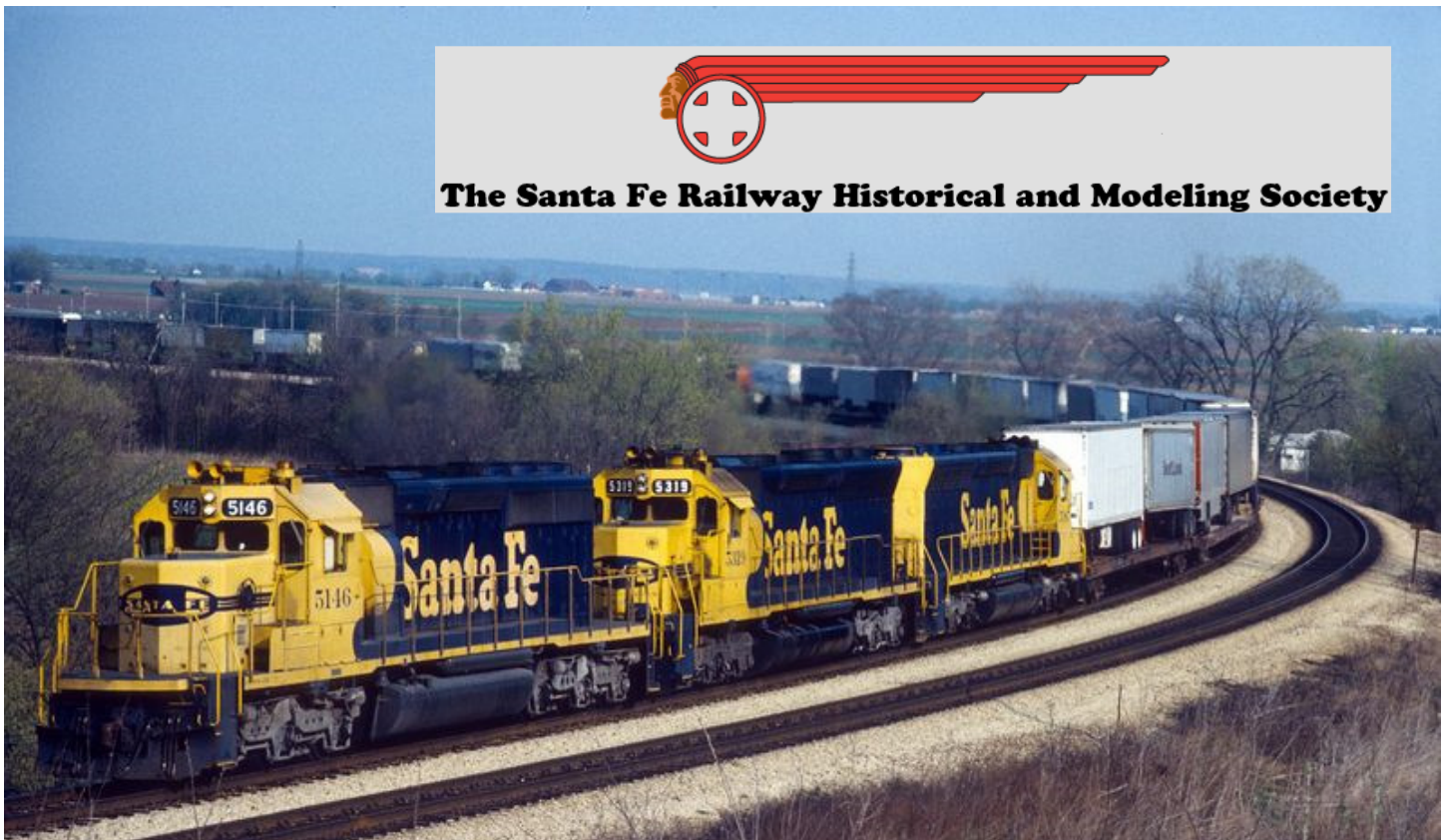
20th – 26th **Texas Express 2023 NMRA National Convention** Dallas/Fort Worth, TX
Sun – Sat <https://2023texasexpress.com/>

30th – Sept 2nd **43rd Annual National Narrow Gauge Convention** Denver, CO.
Wed – Sat <https://www.43nngcdenver.com/>

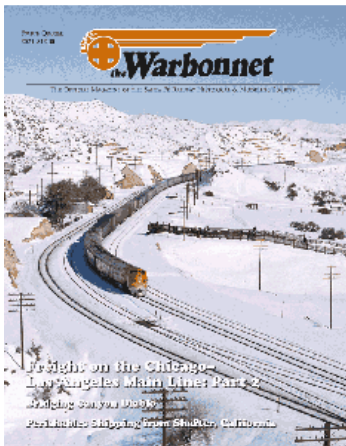
October 2023

14th **Central Missouri Chapter TCA Ozark Division Swap Meet** Columbia, MO.
Sat. Columbia Senior Activity Center

28th – 29th **Wichita toy Train Club Train Show** Wichita, KS.
Sat – Sun <http://www.wichitatoystainmuseum.org/>



The **Santa Fe Railway Historical & Modeling Society** is an independent non-profit corporation devoted to preserving, studying, and sharing information about the former Santa Fe Railway, from its rich history, fascinating operations, to its distinctive equipment and facilities.



The Society and its predecessors have been publishing information about the Santa Fe since 1969. The Society offers exceptional publications on the history and modeling of the Santa Fe. From its flagship quarterly magazine, ***The Warbonnet***, to its comprehensive books on history, motive power, rolling stock and modeling, the Society is the definitive and authoritative source on all things Santa Fe.

Membership Benefits

Regular members receive the Society's quarterly magazine, ***The Warbonnet***, the quarterly newsletter, ***Running Extra***, and receive a 20% discount on most Society publications and offerings. They also receive access to the Members' Only area of the website, which contains hundreds of documents about the Santa Fe.

Click here for the SFRH&MS website: <https://sfrhms.org/>



Happy 4th of July!

The *Main Line*

Publisher & Editor: Robert A. Simmons

The newsletter of the Western Kansas Division is published monthly for no charge by Robert A. Simmons, Division Superintendent / Director

Copyright 2023, by Robert A. Simmons, all rights reserved.

If you have a change of e-mail address, or no longer wish to receive the newsletter, please contact Robert Simmons

Trainman55@hotmail.com or 10594 W. Briarwood Dr.— Dodge City, KS. 67801 or call (620) 521-3591

Please send all inquiries, ideas, or submissions to: trainman55@hotmail.com