



The

Main Line

March 2022



National Model Railroad Association

Mid-Continent Region

The Monthly publication of the



Western Kansas Division



On the Cover:

Late last year, I challenged readers to start a project for their layout and complete it. Although there are many details yet to be added, the basic structure for the concrete plant has been completed. More details inside...

In this issue:

Editor's Musings.....Page 2

Eastern Iowa Division Zoom Meeting Invitation.....Page 4

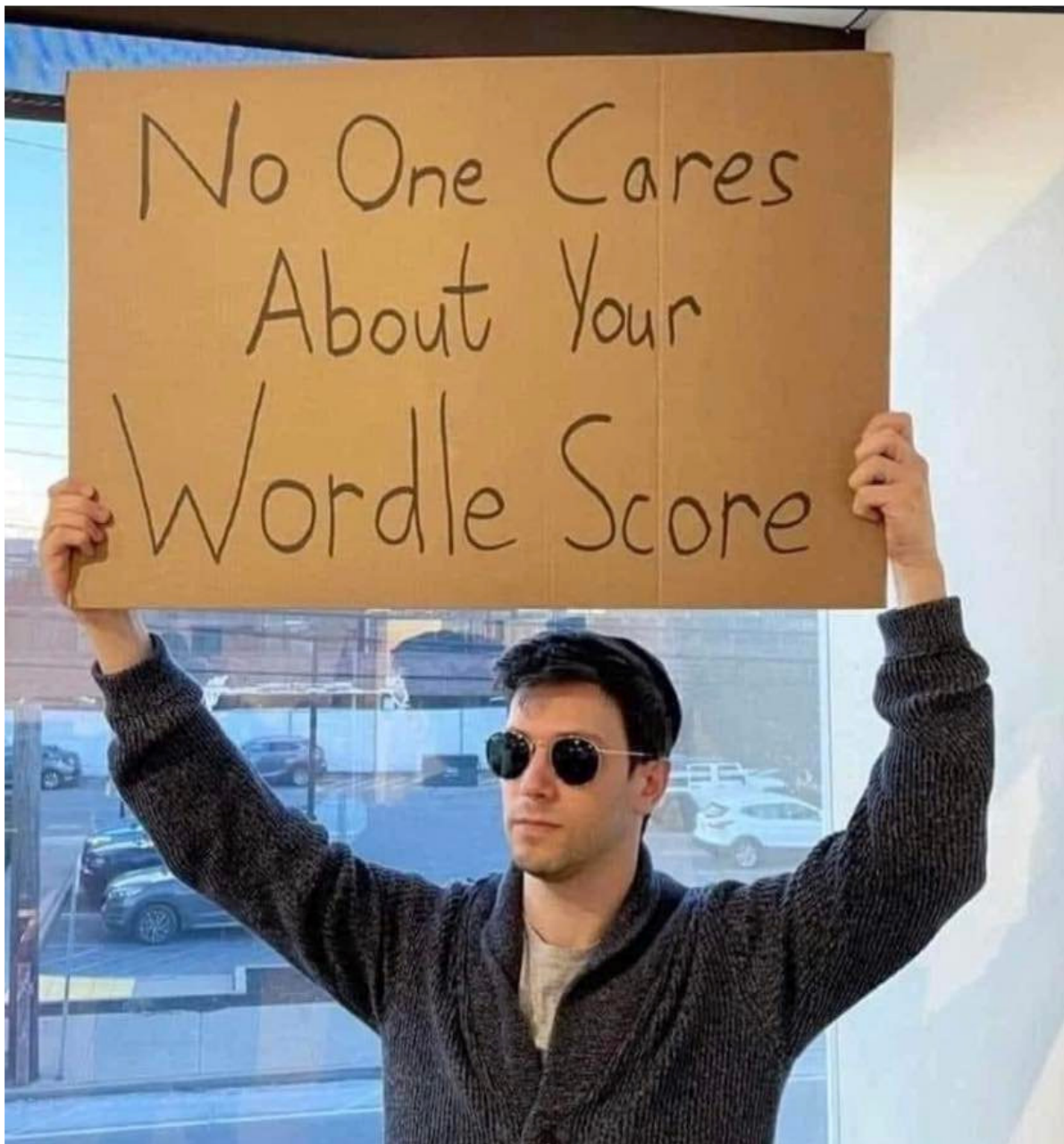
NMRA National Gateway Convention Details.....Page 7

Real Deal.....Page 10

LDOP Details.....Page 14

WKR Update.....Page 18

Date Book.....Page 36



The Western Kansas Division has a **MeWe** page. You can check it out by clicking on the link:

<https://mewe.com/p/westernkansasdivisionnmra>

Editor's Musings

Back in the **September** issue, I issued a challenge:

"Procrastination: pro·cras·ti·na·tion /prəˌkrastəˈnāSH(ə)n/ *noun*: **procrastination** the action of delaying or postponing something.... We all have done this, so **I challenge you** to tackle your next project (at least get started) in September, and please send me a picture (trainman55@hotmail.com) of the finished project or some progress that we can all share with each other. You could build a structure, super-detail a car, add scenery details, add lights, etc."

As of this issue, I am pleased that the upgrade project for the **Western Kansas Rails** N-scale layout is complete. The main structure of the concrete plant is complete with only the addition of details to make the structure finished. This has been a pleasant project that was not extremely difficult, and it will finally complete the concrete plant scene which has been vacant for several years.

I hope this has helped you launch a new project of your own on your layout and that you also enjoy the articles describing our process of scratch-building a structure. I would also invite you to send me photos of your project to be included in the Main Line future issues.



Athearn Releases New EMD SD60s in HO Scale

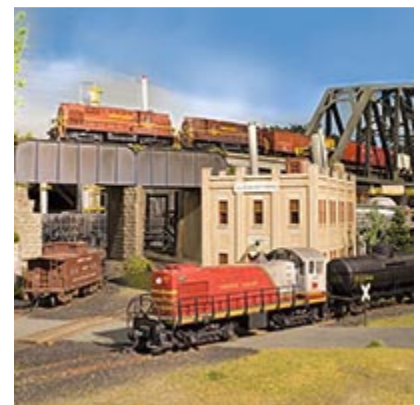


Branch Line on a Shelf: A Different Approach to Room Prep

Rochester Model Railroad Club Seneca Valley Lines

The HO scale Seneca Valley Lines is based upon the Lehigh Valley Railroad main line from Jersey City, through eastern Pennsylvania, and into Western New York.

Click the link: <https://rrmodelcraftsman.com/>





The **Friends of the Burlington Northern Railroad (FBNR)** historical society was incorporated in the state of Idaho on January 3, 1993.

It was chartered to gather, preserve, and share information about the history and the current operations of the Burlington Northern Railroad.

The group began with about 140 members absorbed from the Burlington Northern Historical Society; an unincorporated interim organization interested in studying the history of the Burlington Northern Railroad. In 1996, following the merger between Burlington Northern and Santa Fe, the group voted to follow the Burlington Northern from 1970 to 1995 and the BNSF from 1995 to the present. Then in 2018 we added coverage of the Montana Rail Link.

The Group's quarterly publication, [The BN Expediter](#), is the voice of the organization that shares news about the group's activities, BN historical data, and current operations of the railroad. It is a 24-page all-color publication and will grow even larger as the society grows and more members contribute more information.

We are over 200 members, from all over the United States and several foreign countries. As with any organization, its true success is measured by its continued, sustained membership. And, to continue its endeavors, the Friends of the Burlington Northern Railroad need member participation and support. Membership dues run per calendar year (January through December). Please consider joining or renewing your [membership](#) in the Friends of the Burlington Northern Railroad.



Click Here: <https://fobnr.org/>



Tony Bowen, MMR
EID Superintendent

Hello, Fellow Model Railroaders,

This March the Eastern Iowa Division invites model railroad friends to join us for our March Virtual Layout Tour of **James McNab's The Hills Line: Modeling the IAIS Hills Industrial Spur in HO.**



The virtual layout tour will take place Wednesday, March 16, 2022. The Zoom meeting room will open at 6:45 PM with the virtual layout tour starting promptly at 7:00 PM.

In talking with James, he is planning on a PowerPoint presentation that will be shared through Zoom and will have time for Questions and Answers from the viewers.

Here is some additional information on The Hills Line: <https://thehillsline.com/>

So, settle in with a favorite evening beverage and a snack or two as we get an overview of James McNab's The Hills Line.

Tony Bowen is inviting you to a scheduled Zoom meeting.

Topic: EID Virtual Tour of James McNab's The Hills Line
Time: Mar 16, 2022 06:45 PM Central Time

Join Zoom Meeting

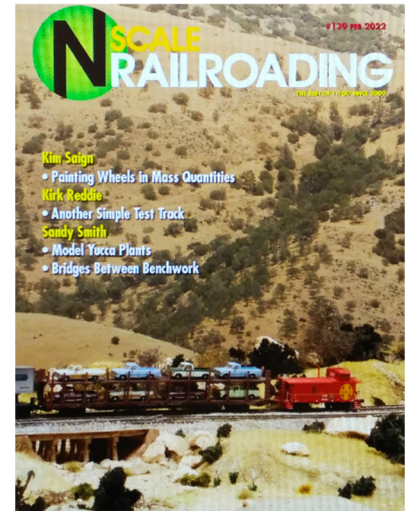
<https://zoom.us/j/94238638994?pwd=bFJlL01SbGRnOGJXelZjR0dUeDg3QT09>

Meeting ID: 942 3863 8994
Passcode: AmD67C



NRail has provided the voice of N Scale model railroading for over 45 years. Starting as NTRAK, it created the first national modular standard, provided the vehicle for N Scale to grow to the second most popular scale in North America, was the birthplace of T-TRAK and today is the home of N Scale model railroading. We welcome all N scalers.

NEW N Scale Railroading is one of two magazines dedicated to N Scale. Recently NSR changed from a print magazine to a free online only magazine. The latest issue, February 2022, is available online at [139-01-46-2022-FEB-01.pdf \(nscalerailroadingmagazine.com\)](https://www.nscalerailroadingmagazine.com/139-01-46-2022-FEB-01.pdf). Take a look. Great magazine. Owner and editor Kirk Reddie is an NRail Advisor.



So, what are your plans for the 2nd week of August in 2024?


Have you ever been to Evanston WY? If not, perhaps This you should mark it down on your calendar. Evanston is a former Union Pacific Division Point. The service facilities — roundhouse, machine shop, etc. — are still there, owned by the town, and converted into meeting space. Would you be interested in attending a N scale event featuring NTRAK, T-TRAK and Free-moN layouts? Would you bring modules?

Membership in NRail includes:

- **One year of the Newsletter (6 issues).**
- **Monthly ZoomTRAK live broadcasts.**
- **Support of the National T-TRAK Layout.**
- **Support of NTRAK layouts at major train shows.**
- **Access to the Members Only section of NRail.org (including over 270 issues of the Newsletter).**
- **Discount on merchandise in the NRail store.**

**Support N Scale Model Railroading
become a member today!**

Click the link: <https://nrail.org/>




Robert Simmons
 833 subscribers


[CUSTOMIZE CHANNEL](#)
[MANAGE VIDEOS](#)

[HOME](#)
[VIDEOS](#)
[PLAYLISTS](#)
[COMMUNITY](#)
[CHANNELS](#)
[ABOUT](#)


Uploads
 [▶ PLAY ALL](#)




Grain Train On The WKR N-scale Layout
171 views • 1 day ago




Molly And The Pirate
25 views • 1 day ago




BNSF Yard Switching 2/10/22
42 views • 2 weeks ago



Lap Two Around the WKR N-scale Layout...
271 views • 2 weeks ago



Lap Around the WKR N-scale Layout
1.2K views • 3 weeks ago



Merry Christmas from the Western Kansas Division,...
68 views • 2 months ago

The [Western Kansas Division, NMRA](#) has a  **YouTube** page that features the activities of the Western Kansas Rails (WKR) N-scale layout, modeling tips, Layout tours, real trains and more...

Some of the most recent videos:



Lap Around the WKR N-scale Layout

<https://www.youtube.com/watch?v=Gwv-TGdxtus>

One of the most watched videos, it is already past 1,200 views.

Molly And The Pirate

<https://www.youtube.com/watch?v=wGAbbqhLFxk>

Nothing to do with trains, but fun watching our new puppy, Molly playing with her favorite toy.



Grain Train On The WKR N-scale Layout

https://www.youtube.com/watch?v=zdD_84_XVrg

Nearly a twenty-foot-long grain hopper train takes a lap on the WKR.

In January, our channel acquired 9 new subscribers, had 2,051 total views, and 5,143 minutes watched...

Check it out for yourself:

https://www.youtube.com/channel/UC9EPv8cQ04rRGAYts-734jw?view_as=subscriber

Gateway 2022

Gateway Rail Productions LLC



Sun, August 07, 2022 @ 08:00 AM — Sat, August 13, 2022 @ 06:00 PM (CDT)



The 2022 NMRA annual convention is August 7-13. The event is being held at the St Louis, Marriott Grand Hotel. Registrants will receive one free self-driving tour.

Registration: **Open**

Location

Event Dates



[Save to my calendar](#)

Registration Closes

AUGUST 07, 2022 @ 6:00 PM



Address

Marriott Grand, St Louis
800 Washington Ave, St Louis, MO
Saint Louis, MO USA



The Santa Fe Railway Historical and Modeling Society



Membership Benefits

Regular members receive the Society's quarterly magazine, *The Warbonnet*, the quarterly newsletter, *Running Extra*, and receive a 20% discount on most Society publications and offerings. They also receive access to the Members' Only area of the website, which contains hundreds of documents about the Santa Fe.

Sustaining members are an important part of the Society. First, we take \$7.50 from the extra \$20 and apply it to the Society's Endowment Fund, which will, over time, take some of the burden of *The Warbonnet* and Society administration off our regular dues structure, helping us make information about the Santa Fe available to more folks at a reasonable cost. Second, we take another \$7.50 from the extra \$20 and apply it to the Society's Project Fund, which is the fund that enables us to underwrite the costs of new books, new website initiatives, new products such as car sides, and finally new initiatives such as the Preservation Fund. The remaining \$5 goes to the general revenues and helps offset the increased postage costs, plus you receive your Warbonnet by first class mail, which typically arrives more promptly than the bulk mailing and, hopefully, in an undamaged condition.



If you're interested in the Santa Fe, click on the link:

<https://sfrhms.org/>



IT'S LIKE WINTER
IS MAD AND KEEPS
STORMING OUT,
THEN COMING
BACK YELLING
'AND ANOTHER
THING!'

Real Deal



On a clear day in February, I drove by the yard in Dodge City, KS. And found a good railfan spot on the South side of the overpass on Underpass Road by National Beef. (Above) Looking to the West, we can see a portion of the mile-long grain train which was parked on the overpass.

(Below) From my parking spot looking to the East we can see the train extending into the distance.





(Above) Another look at the grain train, this time zoomed to the max. In the far left, you can see a car with white graffiti, then look in picture two and you can spot this car in the center of the picture.

(Below) While taking pics of the grain train, the yard crew was switching cars on the East end of the yard.





We are located at:

**6060A West 55th
Ave.
Arvada, Co. 80002**

NOTE: WE HAVE
MOVED
SAME BUILDING BUT
NOW OUR
DOOR IS ON THE
OPPOSITE SIDE



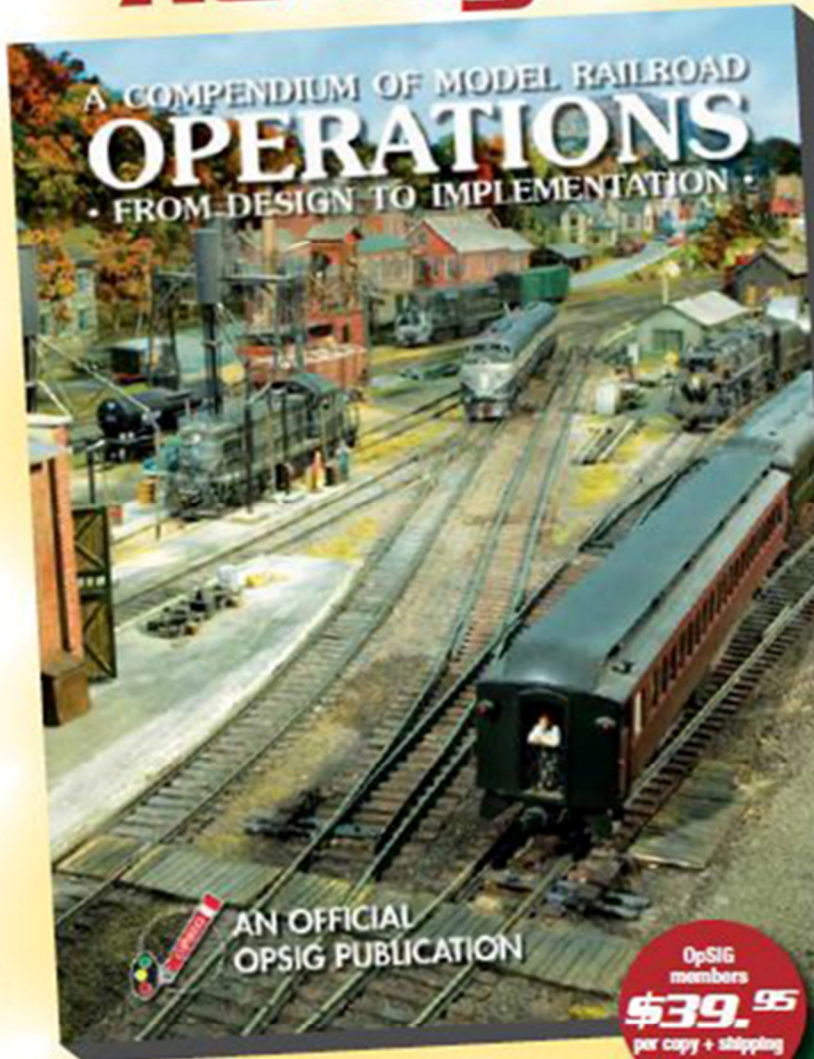
WEST SIDE TOWARDS THE STREET



Check them out for all your N-scale needs
and they now carry Z-scale items as well

Click the link: <https://www.nscalesupply.com/>

Dispatcher to OpSIG Publication No. 2, you're ...
Ready to Roll!



All model railroaders, whether expert or beginner, will find a wealth of useful information in the OpSIG's second publication, **A Compendium of Model Railroad Operations - From Design to Implementation**. A complete guide to all things operations, our latest offering covers every aspect of prototype operations and how to apply them to your model railroad—from design and staffing to yards and paperwork, from communications and signals to dispatching and car forwarding—in 310 full-color pages. Written by ten of your fellow modelers and professionals, **The Compendium** contains more than 350 photos, 120 illustrations, and countless tips, pointers, suggestions, and prototype information to help guide you on your journey. A must for any modeler interested in prototype operations, add it to your library today!

OpSIG
members
\$39.95
 per copy + shipping

Non-
members
\$49.95
 per copy + shipping

Shipping: US (\$8)
 Canada/Mexico (\$21)
 Overseas (\$28)

For shipping rates on multiple books,
 as well as better international shipping,
 please contact Steve Benezra.

To Order: Please mail a check or money order, payable to OpSIG, with number of copies and your mailing address, phone number, and e-mail to:

Steve Benezra
 2737 Thistle Trail
 Hillsborough, NC 27278-9302
 Opsig.editor@gmail.com

For Paypal orders, please add \$1 to the cost of the book and send to OPERSIG@yahoo.com. Provide your mailing address and telephone number in the subject box.

The OpSIG is a 501(c)3 non-profit corporation. For information on how to join the OpSIG, please visit www.opsig.org.

2022 Layout Design and Operations Weekend

March 18th-20th, 2022

Tulsa, Oklahoma

Presented by the Indian Nations Division of the NMRA

We're Back!

Welcome! We are pleased and excited to announce to you the upcoming **LAYOUT DESIGN AND OPERATIONS WEEKEND** to be held on **March 18th, 19th, and 20th**. We will have three operating events on Friday evening, Saturday evening, and Sunday Morning. There are 16 great layouts in the Tulsa Area to choose from.

Saturday morning and afternoon our seminar will be from 8:00 a.m. to 3:45 p.m. including guest speakers to fill out the day. A catered meal will be served in the basement of the Akdar Shrine Center at lunch which is included in the registration. Bring your track plans, photos, display boards and mockups to share with everyone. Great place to solicit feedback on your layout.

Indian Nations preferred Hotel:

Embassy Suites by Hilton 3332 South 79th East Avenue Tulsa, Oklahoma 74145
Room rate - King Suites - \$99, Double Suites - \$104, Good until midnight 2/24/22
Booking Code - LDO Layout Design & Operations
1-800-362-2779 (Embassy) Local - 918-622-4000

Use this link to make your hotel reservations:

<http://embassysuites.hilton.com/en/es/groups/personalized/T/TULESES-LDO-20220318/index.jhtml>

Guest Speakers on Saturday:

- Eric Hansmann – “Prototype Inspiration for Manageable Size Layouts” - 8:15 a.m. to 9:15 a.m.
- Rich Gibson – “Prototype Modeling of the 1951 MEC: a Mixture of Accuracy, Guesswork, and Compromise” – 9:30 a.m. to 10:30 a.m.
- Doug Tagsold – “Designing and Operating the 1:72 Scale Colorado & Southern Clear Creek Division” 10:45 a.m. to 11:45 a.m.
- Catered Lunch and Track Planning Consulting - 11:45 a.m. to 1:15 p.m.
- Richard Frazier – “The Future of Model Railroading” – 1:15 p.m. to 2:15 p.m.
- Doug Tagsold – “Modeling the Railroads of Toledo, Ohio, A lesson on Research, Design, and Operations” – 2:30 p.m. to 3:30 p.m.

Click the link for the website: <https://ldopsigmeet.tulsanmra.org/>

Announcements

Thanks to Robert Simmons for making the [January 2022 issue of the Main Line](#) available!

Thanks to Jim Marlett for making the [January/February 2022 issue of Trails, Rails, & Tales](#) available!

The First Quarter 2022 issue of the [Caboose Kibitzer](#) is available. Thanks to Ray Brady for his work and please send him your articles!

Thanks to Ray Brady for...

Welcome to the Mid-Continent Region of the National Model Railroad Association

A 501(c)3 non-profit corporation, MCoR includes the southern half of the state of Iowa, portions of Illinois, and the entire states of Arkansas, Oklahoma, Missouri, Kansas and Nebraska. Since 1990, MCoR's leadership has fostered a strong program of developing local divisions with the purpose of bringing the potential for NMRA activity and involvement to a community near you. From only two divisions in 1990 located in metropolitan areas, MCoR now has well over a dozen divisions and over 900 members.

Follow Us On Facebook

The Mid-Continent Region now has a [Facebook Group](#) (Thanks Bob!). Please check it out and friend!!

If you have an event you want mentioned here or in the [Calendar](#), please send it

Upcoming Events

The winter 2022 board meeting will be held from 9-10 am Central Standard Time (that is 8-9 am for our members in the mountain time zone) on 1/8/2022. Per the change adopted during the 2021 winter board meeting, this will be a remote call. Members who wish to attend should contact their local board member for further information.

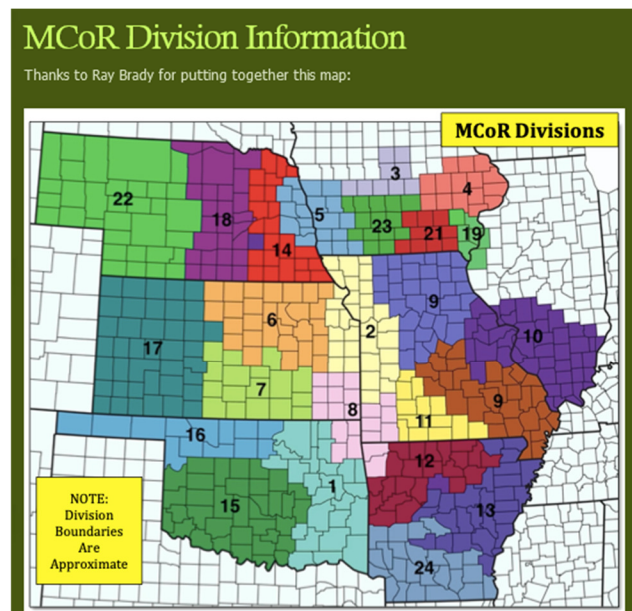
From March 18th-20th the Indian Nations Division of the NMRA is hosting the **Layout, Design, Operation (LDOP) weekend**. Three days of operations on 16 different layouts on Friday and Saturday Evening and Sunday Morning.

Registration and sign in from 7:30 to 8:00 am at the Akdar Shrine Center 2808 S Sheridan Road, Tulsa, OK 74129. Guest speakers on Saturday from 8:15 a.m. to 4:00 p.m.

For additional information visit www.tulsanmra.org for upcoming registration, hotel, clinic, and layout operating information.

You can find anything about the Mid-Continent Region such as Division information by clicking on the link:

<http://www.mcor-nmra.org/>





WELCOME TO OUR NEW WEBSITE

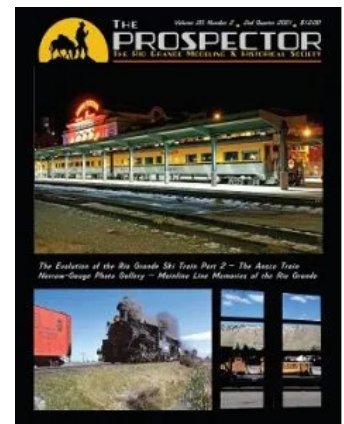
We hope you enjoy the new site's format and experience. While we worked hard to make sure everything is working properly there is still work being done to refine the site. If you want to provide any feedback or suggestions please click on the icon to go to our feedback form.

Members help sustain this world-class institution while enjoying many outstanding benefits throughout the year.

We invite you to join the RGM&HS or renewal your membership and join over 400 other Rio Grande Enthusiasts from all over the world .

All Members receive:

- One year (4 issue) subscription to *The Prospector*, the official magazine of the Society
- A subscription to the Society's e-mail newsletter, the Green Light.
- Members-only emails with advance notice of events, programs, and offers
- Special benefits and features in the Members-only section of the Society's website



The **Rio Grande Modeling & Historical Society** (RGM&HS) founded in 2001 is a Colorado non-profit corporation whose membership consists of diverse group of historians, collectors, railfans, photographers, modelers and railroad employees who have banded together to share one common interest, the Denver & Rio Grande Western Railroad and its predecessors. The fellowship created by this common interest and the opportunity for networking with members and others are the society's greatest assets. Activities to promote this fellowship are geared to serve the wide variety of interests of its members on almost every facet of the D&RGW as it served as the "Action Road"

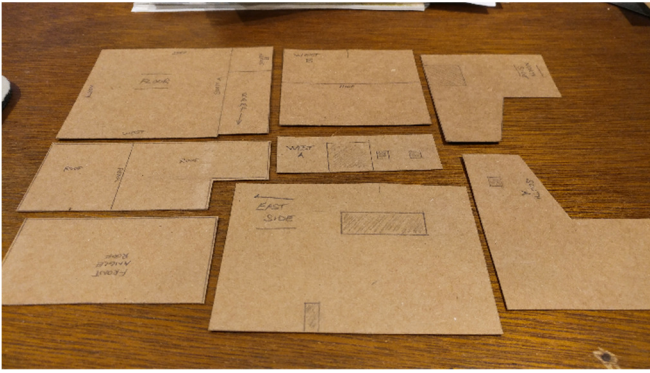
The mission of the Rio Grande Modeling & Historical Society is to preserve and disseminate historical information about the Denver & Rio Grande Western Railroad for the benefit of our members and to others by locating, gathering, preserving, interpreting tangible items relating to the D&RGW and distributing information, documents, publications thus promoting fellowship and education among persons with interests in the railroad.

Click on the link: <https://rgmhs.org/>

You're traveling through another dimension -- a dimension not only of sight and sound but of mind. A journey into a wondrous land whose boundaries are that of imagination. That's a signpost up ahead: your next stop: the Model Railroad Zone!



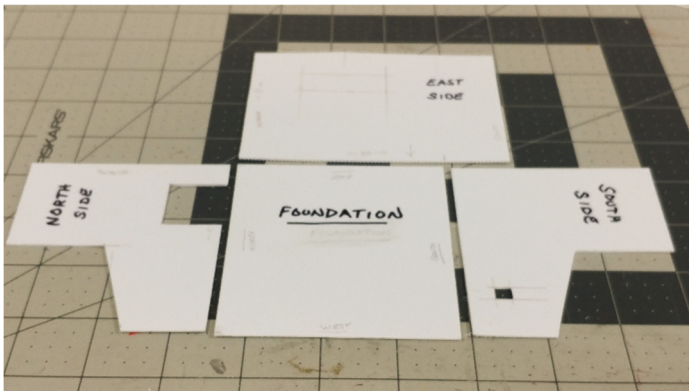
WKR Update



The next step was to assemble the building to evaluate the accuracy of the drawings (we found a couple of errors), then test fit the building on the layout scene to see if it fits (it did).

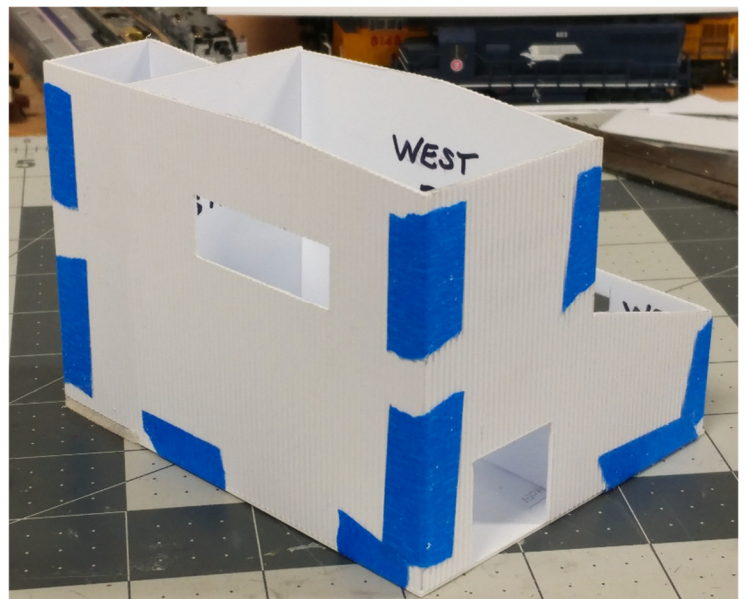
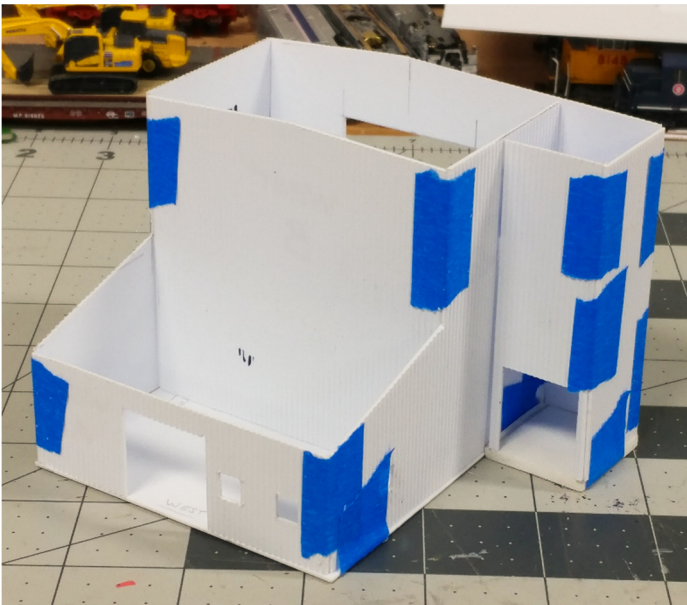
Last month the Scenery Crew began the construction of the main structure of the concrete plant with scale drawings of all sides plus an overhead view.

In February, we transformed the scale drawings into individual pieces using cardboard from a Mountain Dew carton.



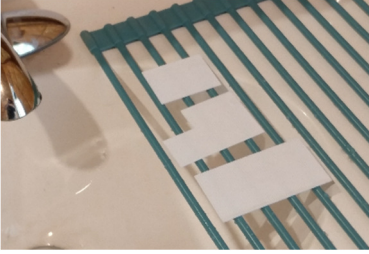
(Left) After the cardboard structure passed muster, we then began the process of creating sheet styrene pieces using the Evergreen Styrene with the proper scale ribbing to match the prototype.

We started with the foundation formed from 0.040-inch plain styrene. Then all exterior walls were cut from the 0.030-inch metal siding styrene.



After the pieces were formed, we did another test fit with masking tape.

WKR Update

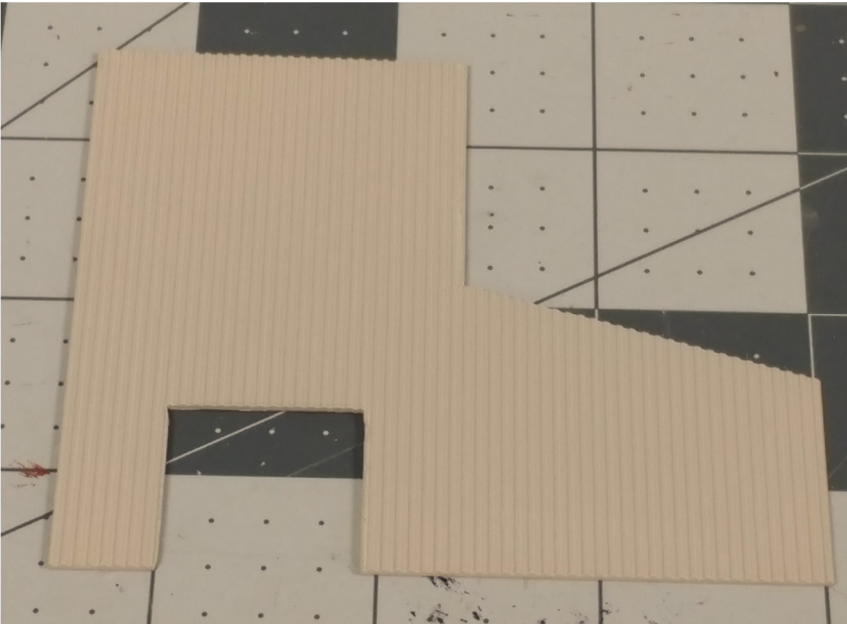


Once the test fit showed the pieces were ready, each piece was taken to the sink and washed with soap and water, then left to air dry on the rack.

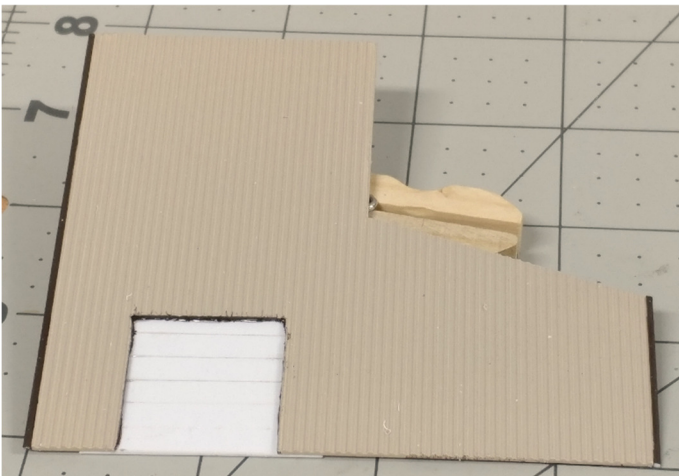
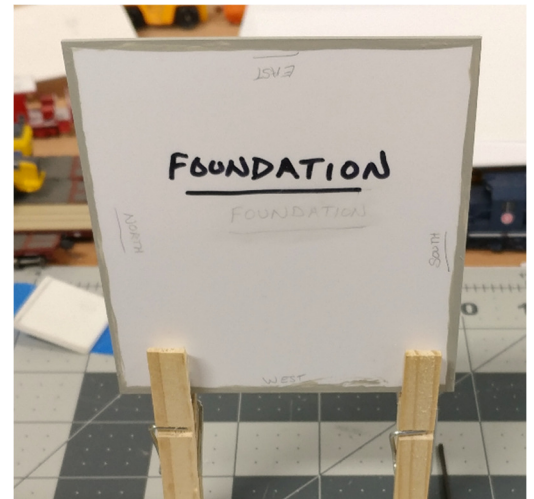
Dipping into the paint cabinet, we found two Krylon colors that were very close to the colors of the prototype.



We started with the “North” wall giving it a coat of the base color.



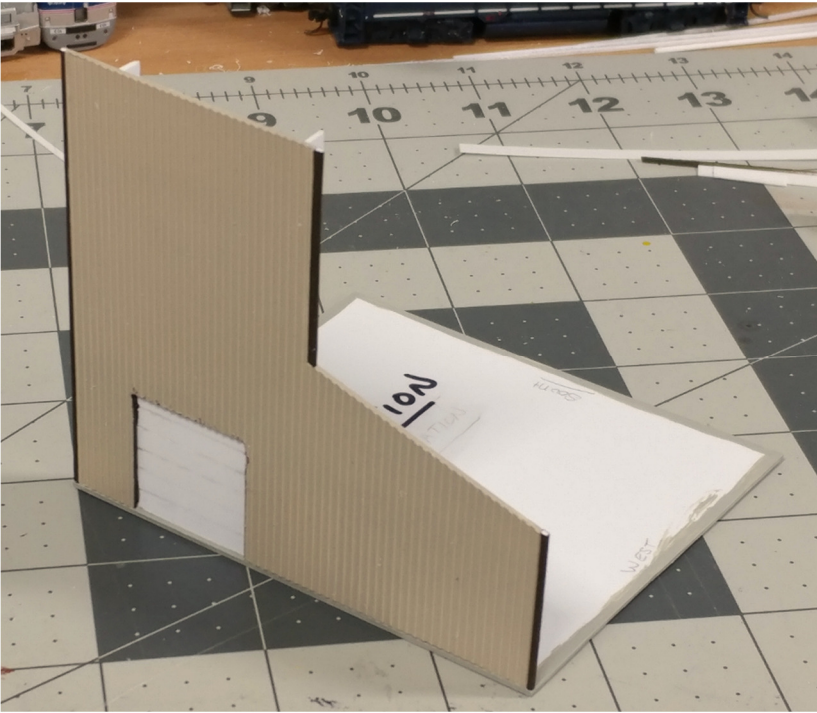
While the paint was drying on the North wall, we used Model Master’s “Gull Grey” on the edges of the foundation. It’s a great color to represent modern concrete.



Continuing the work on the North wall, we used 0.010-inch plain styrene to simulate the roll-up door and it was glued in place after the trim around the door was painted.

This metal building used colored trim on the wall joints, so this was simulated with 0.040-inch plain styrene cut into 0.040-inch width. These were sanded smooth, painted with the dark brown trim color, cut to length, and then installed on the proper ends. Of course, each wall section was made 0.080 short to compensate.

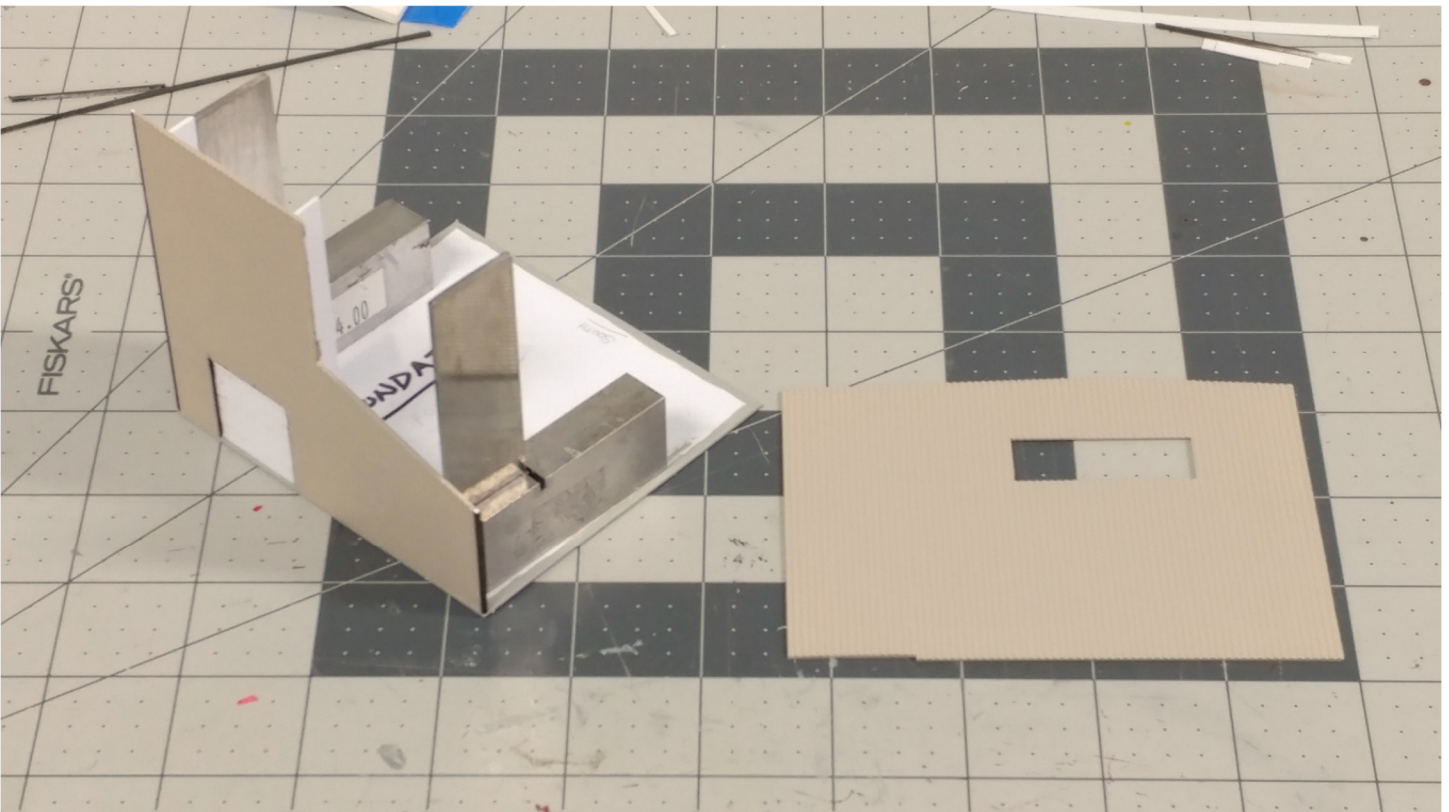
WKR Update



It was time to mate the North wall to the foundation, but first we had to add stiffeners to the inside of the wall.

For the stiffeners, we cut 0.040-inch styrene into 3/8-inch strips. These strips were glued to the inside of the wall to provide structural strength to prevent warping and twisting. At the very top of the wall, you can just see the support strips poking out.

We used metal right-angle braces to keep the wall straight up in relation to the foundation.



After the North wall was installed, we moved on to the East wall. At the lower left corner of the East wall there is a small notch removed to clear the taller concrete pad under the loading section.

WKR Update



At this step, all four outside walls are in-place, and we are viewing the West wall. This wall also has a roll-up door and two windows. Oops! At this point after everything was installed, I discovered it was NOT two windows, but an entry door and window. It wasn't too difficult to cut out the lower portion of the window to make it a door. Here you can also see the interior bracing better.



At this stage, the entry door Oooops was corrected, the West tall wall section was added, plus the lower roof was in place.

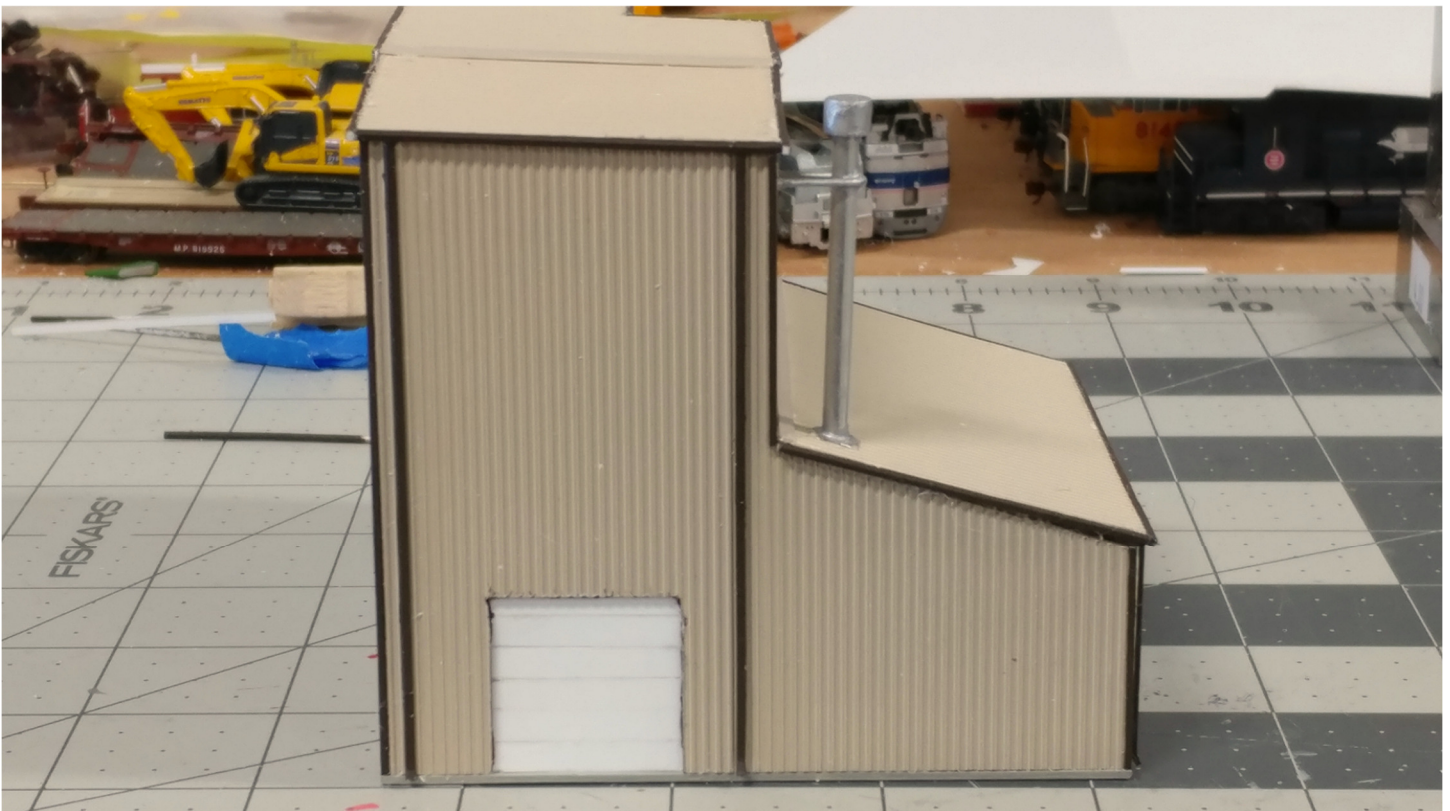
WKR Update



(Left) The basic construction of the concrete plant is now complete. We are looking at the West side. The upper roof section is in-place, in addition the exhaust stack was added on the left.

On the right side, the load out section is in place including the concrete floor and ramp down to the grade level.

(Below) A view of the North side, showing the gutter down spouts, and a better view of the exhaust stack



WKR Update



(Above) The East side of the structure showing the opening for the aggregate loader.

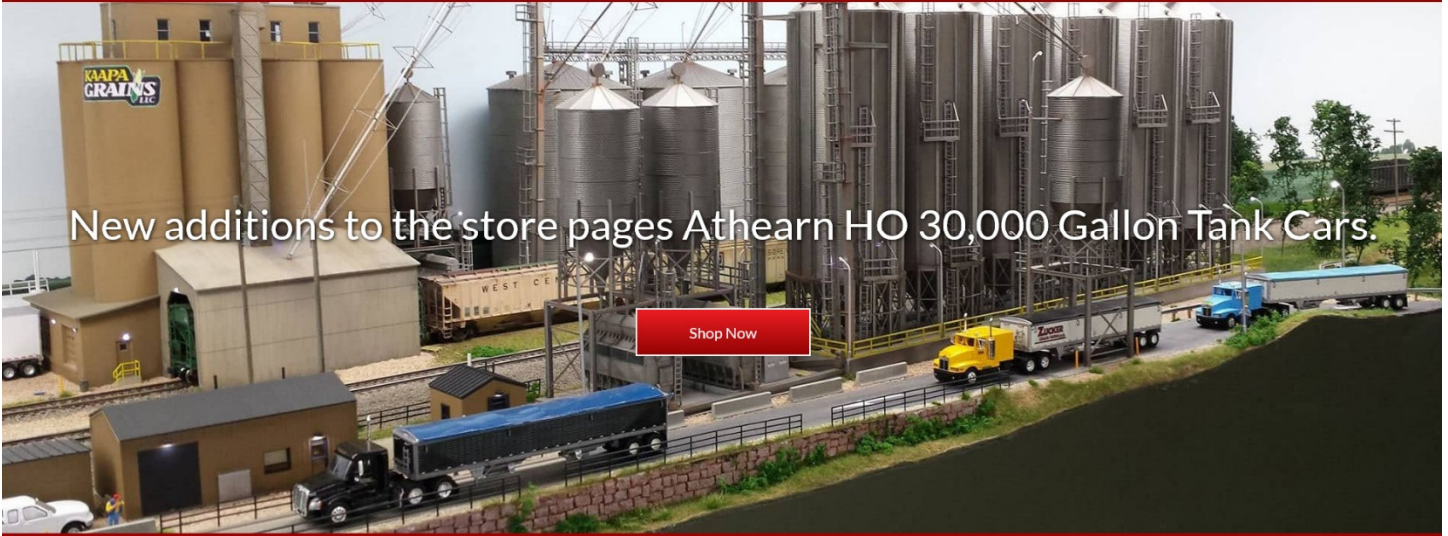


WKR Update



(Above) The structure in place on the layout to assess fit. A lot of details to add yet.
(Below) The real structure for comparison.





New additions to the store pages Athearn HO 30,000 Gallon Tank Cars.

Our Show Schedule:

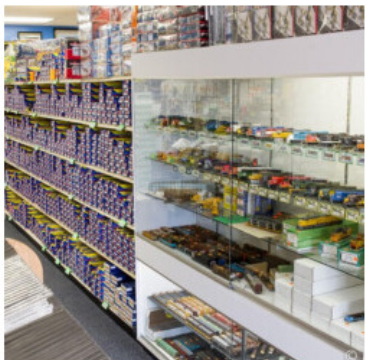
Hostlers Festival Website Info	Newgate Mall	Ogden, UT	March 4, 2022 March 5, 2022 March 6, 2022
Boot Hill Train Show - Garden City	Finney County Fairgrounds	Garden City, KS	March 12, 2022 March 13, 2022
Greater Sioux Falls Model Train Show	Multi-Cultural Center	Sioux Falls, SD	March 19, 2022 March 20, 2022

Welcome to Spring Creek Model Trains

Whether you are one of our “show” regulars or a first-time visitor, we gladly invite you to click the link to our website: <https://www.springcreekmodeltrains.com/> come on in and browse around.

You can also follow us on Facebook: <https://www.facebook.com/springcreekmodeltrains>

We use Facebook and our newsletter to let you know when we have new announcements on the web site and any changes in our show schedule. Our newsletter is also used to send new product announcements and arrivals.



BECOME A TRAINS.COM UNLIMITED MEMBER



START YOUR TRAINS.COM UNLIMITED MEMBERSHIP TODAY TO UNLOCK EXCLUSIVE MEMBER-ONLY BENEFITS!

- All content on Trains.com from our family of brands, including NewsWire, Product Reviews, Track Plan Database and more!
- Unlimited Video Streaming of all new video series and workshops
- Full magazine archives from all five publications—that's more than 85 years of issues!
- Digitized Kalmbach Media books
- Live streaming events and virtual tours
- Online Q&As with our editors
- A weekly e-newsletter
- Live webcams
- Exclusive giveaways and discounts
- FREE Trains.com Unlimited t-shirt!
- AND MORE!

START YOUR 30-DAY **FREE TRIAL**



**Model
Railroader**

**video
PLUS**

**CLASSIC TOY
TRAINS**

Classic Trains

**Garden
RAILWAYS**

Trains

THE BEST IN MODELING & RAILROADS • ALL IN ONE STOP!



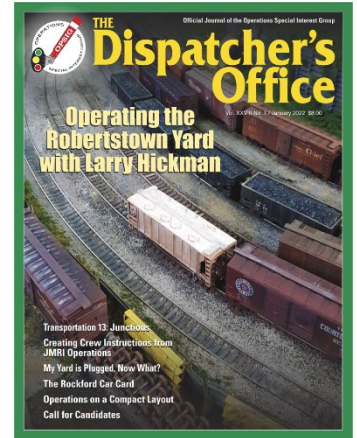
The principal purpose of the **Operations Special Interest Group (OPSIG)** is to discuss, develop and disseminate ways of operating model railroads to realistically emulate practices of the prototype. This includes sharing information on various methods of generating, moving, and controlling traffic to heighten the feeling that our models are an active and integral part of the national rail transportation network, serving shippers and consignees throughout the nation.

We also discuss and communicate information about the methods and procedures used by the real railroads and ways of most practically and realistically adapting them to the model world. So, if you like to operate the railroad you've created, this is a place to learn more and find others with similar interests.

We publish a quarterly magazine, [*The Dispatcher's Office*](#), which in addition to containing articles and information on railroad operations (both prototype and model), contains listings of operating layouts, sessions, and events that members are invited to attend. [Back issues are available.](#)

In addition, the OPSIG web site serves as a clearinghouse for publicizing [regional operating events and meetings](#), where layouts are open for guest operations.

Click the link to the website: <https://www.opsig.org/>



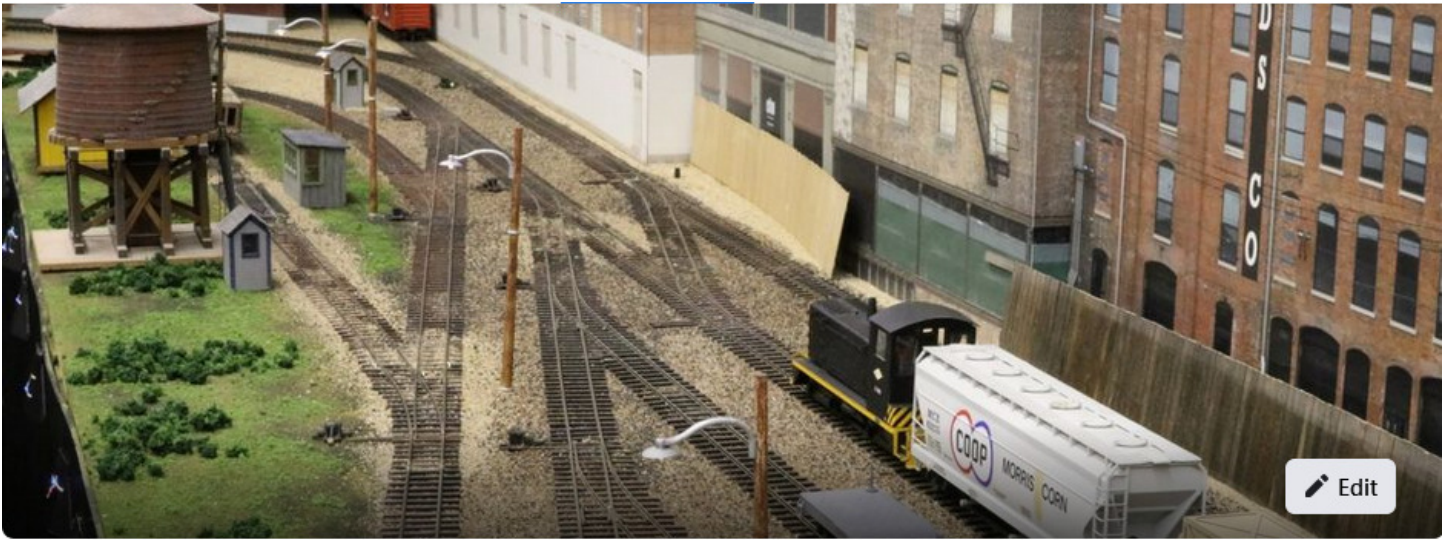
Operations SIG

@OperationsSIG · Nonprofit organization

[Send message](#)

Hi! Please let us know how we can help.

Click the link to the Facebook page: <https://www.facebook.com/OperationsSIG>



Mid-Continent Region, NMRA

Public group · 359 members

Joined ▼

+ Invite

About

Discussion

Featured

Topics

Your Items

Events

Media

Files

People

Q

...



If you're a member of the **Mid-Continent Region, NMRA**, feel free to post on the [Facebook](#) page; train shows, your layout, your latest project, meetings, anything related to model railroading in our Region...

Check it out: <https://www.facebook.com/groups/1851848998468077>

I don't think I've ever heard the concept explained any better than this .



'Well you see, Norm, it's like this . . A herd of buffalo can only move as fast as the slowest buffalo. And when the heard is hunted, it is the slowest and weakest ones at the back that are killed first. This natural selection is good for the herd as a whole, because the general speed and health of the whole group keeps improving by the regular killing of the weakest members. In much the same way, the human brain can only operate as fast as the slowest brain cells. Now, as we know, excessive intake of alcohol kills brain cells. But naturally, it attacks the slowest and weakest brain cells first. In this way, regular consumption of beer eliminates the weaker brain cells, making the brain a faster and more efficient machine. And that, Norm, is why you always feel smarter after a few beers.'

The groundhog saw his shadow, so I guess I'll be staying in the train room for 6 more weeks.



But let's be real, I was gonna do that anyway...

Check out the latest issue by clicking on the link: <https://www.tracksidemodelrailroading.com/>

Trackside Model Railroading is a publisher for model train enthusiasts who want to enjoy layout tours in depth. The digital magazine is advertisement-free and covers two layouts each month. We feature layouts of all the fine scales with lots of full-page photos, articles about the railroads, and short videos.

Our DVD and Blu-ray movies feature much more video of the layouts.



Our mission is to preserve and promote the heritage of the Missouri Pacific Railroad and its affiliates. This includes the Texas & Pacific, Chicago & Eastern Illinois, Kansas Oklahoma & Gulf, Alton & Southern and many other roads that were part of the MP family.



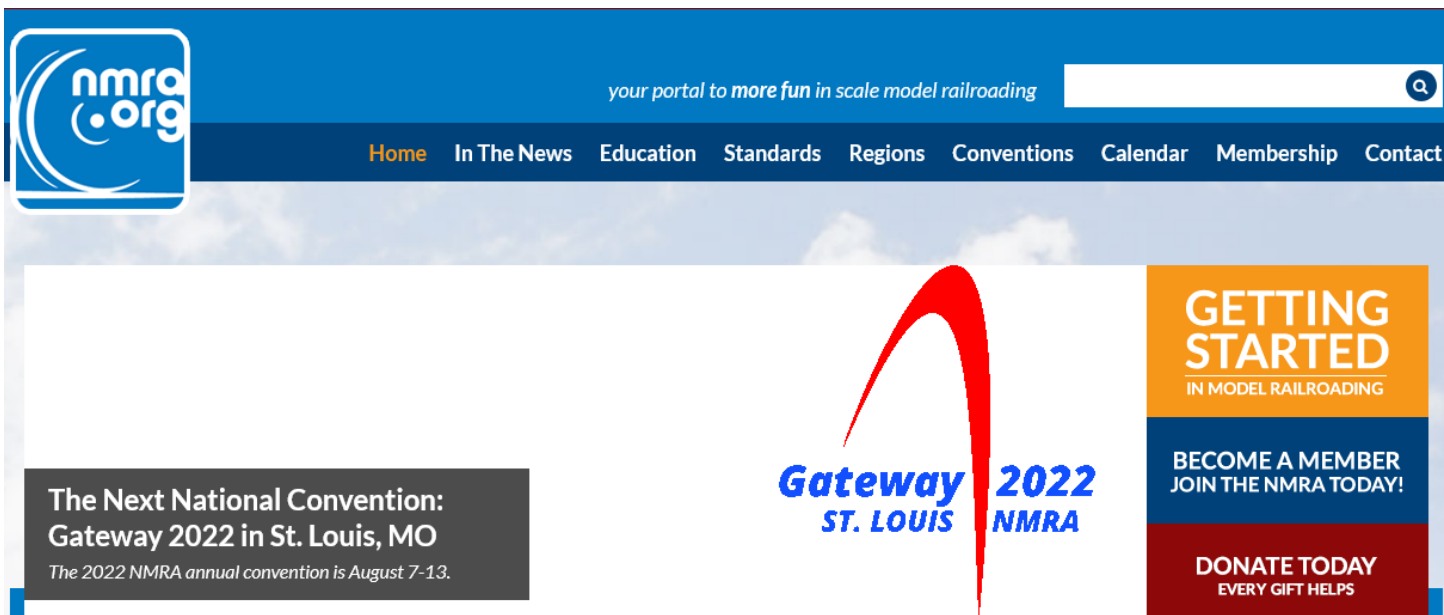
The Society publishes an illustrated quarterly magazine called **"The Eagle."** Each issue contains current news and articles of historical interest. Rosters of equipment, technical information and data, and modeling projects are just a few of many items of interest published along with the business of the society. All members are urged to contribute material for publication. Along with the magazine, the Society produces a full color calendar of photos from across the railroad covering all eras.



Annual Convention
 The 2022 convention will be held in Palestine, TX on October 6-9.
 Look for more info on the 2022 convention in March.
 Planning has begun for the 2023 convention. It will be held in Wichita, KS.

Here is the link for the website: <http://www.mopac.org/>

Here is the link to the Facebook page: <https://www.facebook.com/MoPacHistorical>



Why join the NMRA?

- [NMRA Member Benefits](#)
- [Kalmbach Memorial Library](#)
- Fellowship of other modelers
- [NMRA Model Railroad Directory](#) - Search the Directory for members with model railroads.
- The [Achievement Program](#)
- [Regional](#) and [National Conventions](#)
- Access to Master Model Railroaders
- Monthly *NMRA Magazine*
- Insurance coverage for club layouts, meets and shows (USA and Canada only)
- [NMRA Standards & Recommended Practices](#)
- Participation in photo, slide, and model [contests](#) with fellow members
- [Members' Aid Program](#) Got a question? We've got the answers!
- [Pike Registry](#) -- Register your model railroad name
- [100% NMRA Club](#) - The extra benefits of having all of your rail club members also members in the NMRA

Click here for the website link: <https://www.nmra.org/>



Click here for the NMRA Facebook page:
<https://www.facebook.com/NMRA.org>

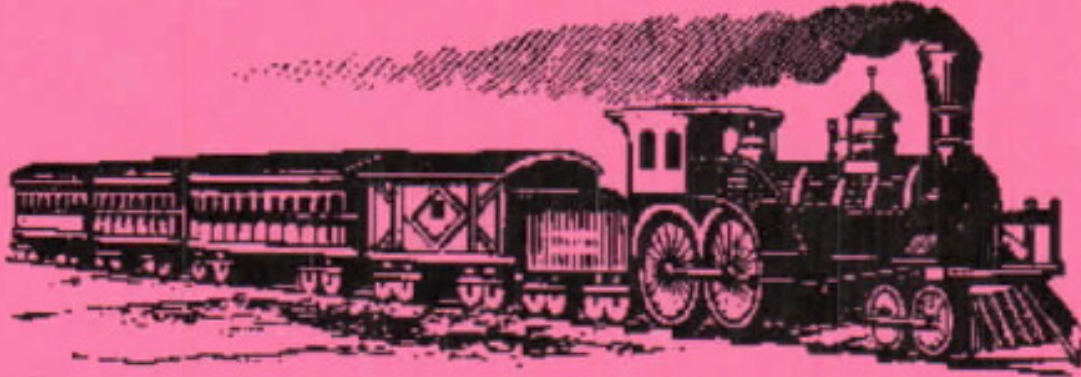


NMRA - National Model Railroad Association
 @NMRA.org ★ 4.7 (47 reviews) · Nonprofit organization

[Sign Up](#)
 nmra.org

2022 GARDEN CITY MODEL TRAIN SHOW

Boot Hill Model Railroad Club



Garden City, Kansas

Finney County Fairgrounds

601 Lake Ave Garden City

MARCH 12 & 13, 2022
Saturday 9-5 Sunday 10-4

BIGGEST LITTLE TRAIN SHOW AROUND

Operating Layouts

Train Vendors

Lunch Counter

We ask that all Covid-19 precautions
be taken when visiting the show.

For more information:

Henry Turner, 620-271-4306

hat9@cox.net

cwht@cox.net

Check us out at: <https://www.facebook.com/BootHillModelRailroadClub>

Admission:

\$6.00 for Adults

Child 10 yrs and under free with adult admission.



PAPER GRAPHICS

2004 E. Schulman Ave.
Garden City, KS 67846

620-276-7641

Printing for over 25 years



After a 2-year hiatus, plans are coming together, and the Herington Railroad Days in Herington, KS is on the calendar for 2022!

We're joining forces with the Kansas Central Division of NMRA for the show and the proceeds benefit the Herington Historical Museum.

We're also working with the Abilene & Smoky Valley Railroad to run an excursion from Herington on the Silver Flyer Rail Bus to ride the former Rock Island from Woodbine to Pearl.

The Herington Museum and railroad Baggage Car annex will be open free-of-charge during this time.

We will post periodic updates at: www.heringtonrailroaddays.com as the show approaches.



2nd Annual Herington Kansas Railroad Days

Saturday/Sunday April 30 & May 1, 2022

9 AM to 4 PM both days Admission by Donation

Herington Community Building

810 S. Broadway - Herington, KS 67449



- Buy/Sell/Trade Model RR equipment and railroad memorabilia
- Operating Model RR Layouts
- Clinics / Workshops
- Concessions
- Free parking
- Ride the A&SVR excursion over the old Rock Island Line
- Visit the Herington Historical Museum and Railroad Annex

heringtonrailroaddays.com

Phone: 316-258-4500

Email: HeringtonRailroadDays@gmail.com

Proceeds benefit Herington Historical Museum



Welcome to the Union Pacific Historical Society! Founded in 1984, UPHS is an independent, non-profit organization dedicated to preserving and sharing the history of the Union Pacific Railroad. As of the beginning of 2016, the Society has about 1,900 members. Historians, railfans, employees, and modelers have found the UPHS to be a matchless source of accurate and in-depth material concerning historical operations, traffic, motive power, rolling stock and facilities of the Union Pacific and predecessor companies. Railroad employees, managers, and retirees are welcome.



The Streamliner is the official publication of the Union Pacific Historical Society, four issues are included with annual membership. Memberships and individual copies may be purchased from the [Company Store](#).

You're Invited!

We invite you to join the **Union Pacific Historical Society**! Join with Union Pacific enthusiasts from all over the world by submitting your one-year membership application.

- *Regular membership* (for those in the USA over 25 as well as all those abroad) is the next category. Both Youth and Regular memberships entitle one to receive four issues of our

highly acclaimed quarterly magazine, *The Streamliner*, as well as discounts on selected products in the Company Store.

Click the link for the website: <http://uphs.org/>

Click here for the Facebook page: <https://www.facebook.com/Union-Pacific-Historical-Society-131902420186325>



Our Story

In 2011, Midwest Model Railroad started with the idea of making this hobby more accessible to everyone. Since day one we have strived to keep our operating cost to a bare minimum and pass on those savings to you. As of this summer, 2021, we are succeeding in offering some of the best prices anywhere in the hobby, with one of the largest lists of **new** inventory in the United States.

Some great side effects of this goal have been the creation of real time inventory on our website and a turnaround time of **just one day** between purchase and shipping. We are centrally located in Kansas City, MO meaning orders to any corner of the United States arrive with in just a few days.

As you explore our store, you will find we deal in more than just model railroad. Board Games, slot cars, and much, much more coming with the new expansion, finding just what you are looking for is simple and efficient.

HO Scale ▾ N Scale ▾ Scenery ▾ Assembly ▾ Tools ▾ DCC & DC ▾ Books

Railroadiana Games and Puzzles ▾ Slot Cars ▾ Pinocar ▾ Other ▾ Clearance ▾ AML Shop ▾

Check out their website: <https://midwestmodelrr.com/>

Date Book

March 2022

12th – 13th **2022 Garden City Model Train Show** (Boot hill Model Railroad Club) Garden City, KS.
Sat – Sun Finney County Fairgrounds

18th – 20th **Layout Design & Operations Weekend** Tulsa, OK.
Fri – Sun <https://ldopsigmeet.tulsanmra.org/>

April 2022

2nd **Greater Tulsa Area Train Show** (Toy Train Operating Society) Bixby, OK.
Saturday <http://www.ttos-soonerdiv.org/division-events.html>

2nd & 3rd **Rocky Mountain Train Show** Denver, CO.
Sat – Sun <https://rockymountaintrainshow.com/Default.aspx>

9th & 10th **North Platte 28th Annual Train Show** North Platte, NE.
Sat – Sun D & N Event Center – 501 East Walker Road

23rd **Ark City Model Train Show** Arkansas City, KS.
Saturday <http://www.wichitatoytrainmuseum.org/>

30th & 1st **Herington Railroad Days** Herington, KS.
Sat – Sun Herington Community Building <https://heringtonhistory.org/heringtonrailroaddays/>

29th & 1st **Rocky Ops (North)** Denver, CO.
Fri – Sun <http://www.covenantfamilyministriesl.org/RockyOp/index.html>



▶ Start reading now

Read the current issue online

Get the current issue

Click for more ways to read the current issue



Click to visit our premium web video channel

Running Extra!
Subscribe to new mag

Model Railroad Hobbyist Store

Click to visit our online store ...



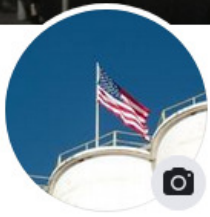
February Running Extra:
\$2.99

SUBSCRIBE and save 80%!

Subscribe and save BIG



Click the link for the latest issue: <https://model-railroad-hobbyist.com/>



Western Kansas Division

Create @Username · ★ 5 (5 reviews) · Organization

+ Add a button

Home

About

Photos

Events

More ▼

Promote

Q

...



Check out the [Facebook](#) page of the **Western Kansas Division**, NMRA:

<https://www.facebook.com/Western-Kansas-Division-592835177514577>

The *Main Line*

Publisher & Editor: Robert A. Simmons

The newsletter of the Western Kansas Division is published monthly for no charge by Robert A. Simmons, Division Superintendent / Director

Copyright 2022, by Robert A. Simmons, all rights reserved

If you have a change of e-mail address, or no longer wish to receive the newsletter, please contact Robert Simmons

Trainman55@hotmail.com or P.O. Box 157 – Dodge City, KS. 67801 or call (620) 521-3591

Please send all inquiries, ideas, or submissions to: trainman55@hotmail.com