



The

Main Line

September 2020



National Model Railroad Association

Mid-Continent Region

The Monthly publication of the **Western Kansas Division**



On The Cover:

A side view of the sawmill on Mark Fisher's On30 portable layout. Mark has been working on this layout for several years and the level of detail is exceptional.

Along with...

The Real Deal...Page 3

Mark Fisher Layout Tour...Page 7

WKR Layout Update...Page 15

The Date Book...Page 19

Editor's Musings

For some time now, we have been tossing around ideas on how we can attract new members into the ranks of the NMRA. With our lives being disrupted by the Corona Virus, I believe a great opportunity has presented itself to recruit new members and promote the hobby in general.

With so much of our regular train activities being cancelled, I have purchased and installed a camera/mike on the computer and have installed both Zoom and Skype. I have been fortunate to be involved in several Zoom meetings with modelers both young and old, both as presenter and watcher and I have learned better ways to host these types of meetings.

For the Western Kansas Division, I would like to institute regular, weekly Zoom meetings to include fun activities such as layout tours, clinics, and other presentations, so if anyone would like to present during these meetings such as a layout tour, or how you built a particular structure, please let me know. I will contact members by e-mail to see who can participate.



See Dave & Deb at the store in Deshler, or check-out their website by clicking on the link below:

<https://www.springcreekmodeltrains.com/>

**I would do
anything
for
LOVE...**



**Please
stop
buying
trains!**



**...BUT I
WON'T DO
THAT!!**



The Real Deal



Upon my return to Dodge City as a new resident having left some twenty-seven years earlier, I rediscovered the DCF&B (Dodge City, Ford, & Bucklin) switcher, parked near South Second street. The 6601 is an ex-U.S. Army switcher originally numbered 7459 built as model S-1 by **Alco** (American Locomotive Company). This is the way it appears today.

Some research on the internet revealed a description from Wikipedia:

The **ALco S-1** was a 660 horsepower (490 kW) switcher diesel-electric locomotives produced by **ALco** and their Canadian subsidiary Montreal Locomotive Works (MLW). These had Alco-Blunt bogie trucks, while the later S-3 had AAR type A bogie trucks. The S-1 was built between April 1940 and June 1950, with a total of 543 completed, of which 11 went to the U. S. Army.



The Real Deal



The Real Deal





Be sure to check-out the Facebook page for the
Western Kansas Division:

<https://www.facebook.com/Western-Kansas-Division-592835177514577>

Layout Tour

In late August I was able to go visit with **Mark Fisher**, a member of the **Boot Hill Model Railroad Club** of Dodge City and Garden City in Southwest Kansas. The Club has supported model railroaders for more than a quarter century and they display some of the finest layouts both in their own shows and other Club shows around the Mid-West.

Mark is one of several club members who have taken to modeling in On30 on four foot by five foot sections (which can fit in the back of a pick-up) and be displayed alone, or joined corner to corner for a much larger display. The time frame is the middle to late 1800's, and each section depicts a different aspect such as Steve Weidner's (the original section) focuses on mining, while Mark's shifts the focus to logging. Let's take a tour of Mark Fisher's On30 section...



The signature structure is the sawmill that features full interior lighting, working power plant, spinning band saw, and moving log trolly.



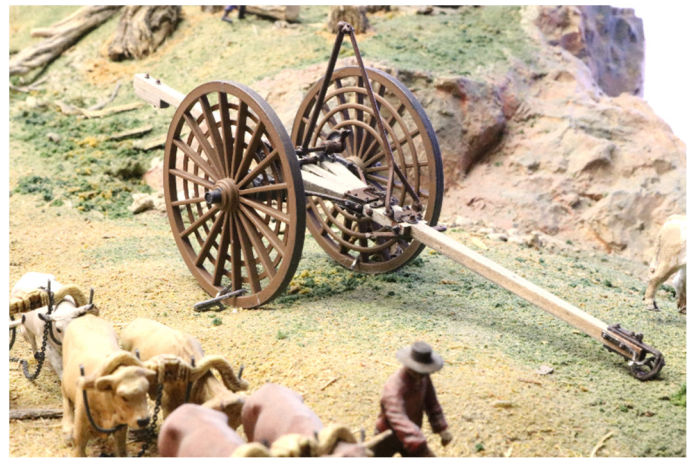
Layout Tour



The log trolley is slowly pulled back and forth by a small cable and a delay timer on the end of the sawmill.



Layout Tour



Mark's layout is also a fascinating look at logging in centuries past, being much more labor intensive. (Upper Left) Teams of loggers would fell the trees and strip the branches. (Upper Right) the tree trunks would be attached to this device on the short end while the oxen harnessed to the long end and the trunks would be dragged to the rail head to be loaded and secured on cars. (Below) The railroad then moves the loaded cars to the sawmill where the logs are dumped into the logging pond.



Layout Tour



(Above) Once the logs are in the logging pond, they are hooked onto a moving chain and pulled up the flume where they are held until their turn on the logging trolley.



Layout Tour



Layout Tour



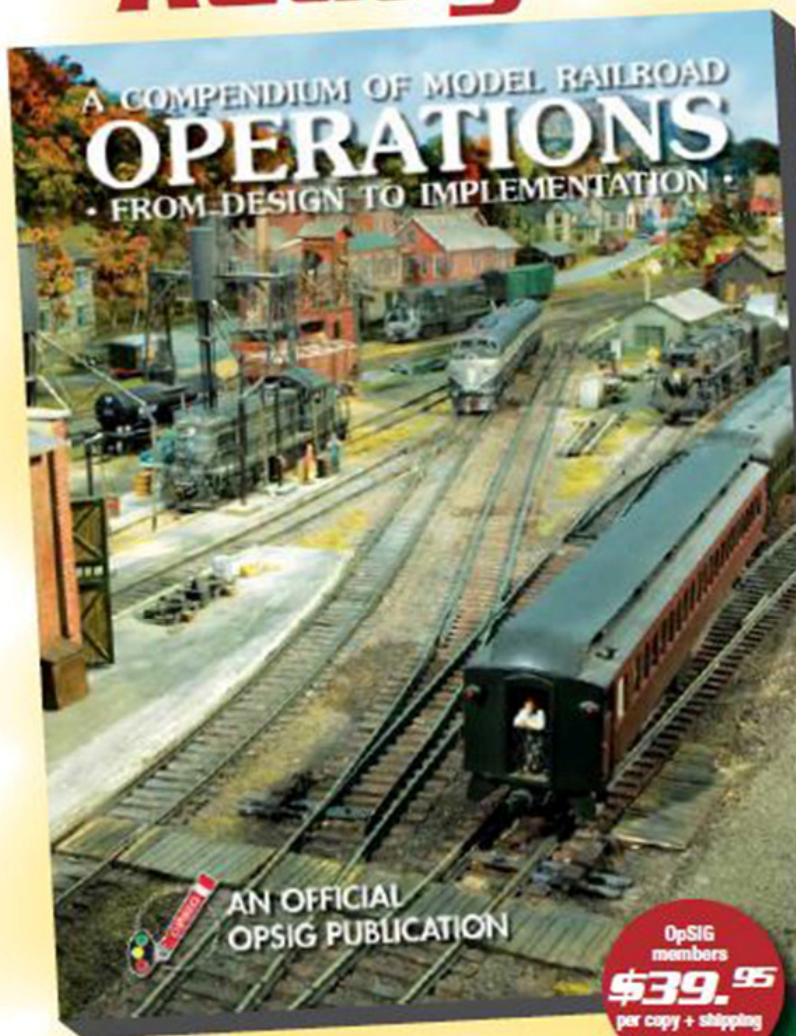
Layout Tour



(Above Left) The compact Fisher On30 layout, light to carry, easy to transport, and loaded with exceptional detailing.
(Above Right) Layout owner, Mark Fisher, holding his next project, a sailboat for his home layout which will be featured next month. I wish to express my Thanks to Mark for his hospitality.

Dispatcher to OpSIG Publication No. 2, you're ...

Ready to Roll!



All model railroaders, whether expert or beginner, will find a wealth of useful information in the OpSIG's second publication, **A Compendium of Model Railroad Operations - From Design to Implementation**. A complete guide to all things operations, our latest offering covers every aspect of prototype operations and how to apply them to your model railroad—from design and staffing to yards and paperwork, from communications and signals to dispatching and car forwarding—in 310 full-color pages. Written by ten of your fellow modelers and professionals, **The Compendium** contains more than 350 photos, 120 illustrations, and countless tips, pointers, suggestions, and prototype information to help guide you on your journey. A must for any modeler interested in prototype operations, add it to your library today!

OpSIG
members
\$39.95
per copy + shipping

Non-
members
\$49.95
per copy + shipping

Shipping: US (\$8)
Canada/Mexico (\$21)
Overseas (\$28)

For shipping rates on multiple books,
as well as better international shipping,
please contact Steve Benezra.

To Order: Please mail a check or money order, payable to OpSIG, with number of copies and your mailing address, phone number, and e-mail to:

Steve Benezra
2737 Thistle Trail
Hillsborough, NC 27278-9302
Opsig.editor@gmail.com

For Paypal orders, please add \$1 to the cost of the book and send to OPERSIG@Yahoo.com. Provide your mailing address and telephone number in the subject box.

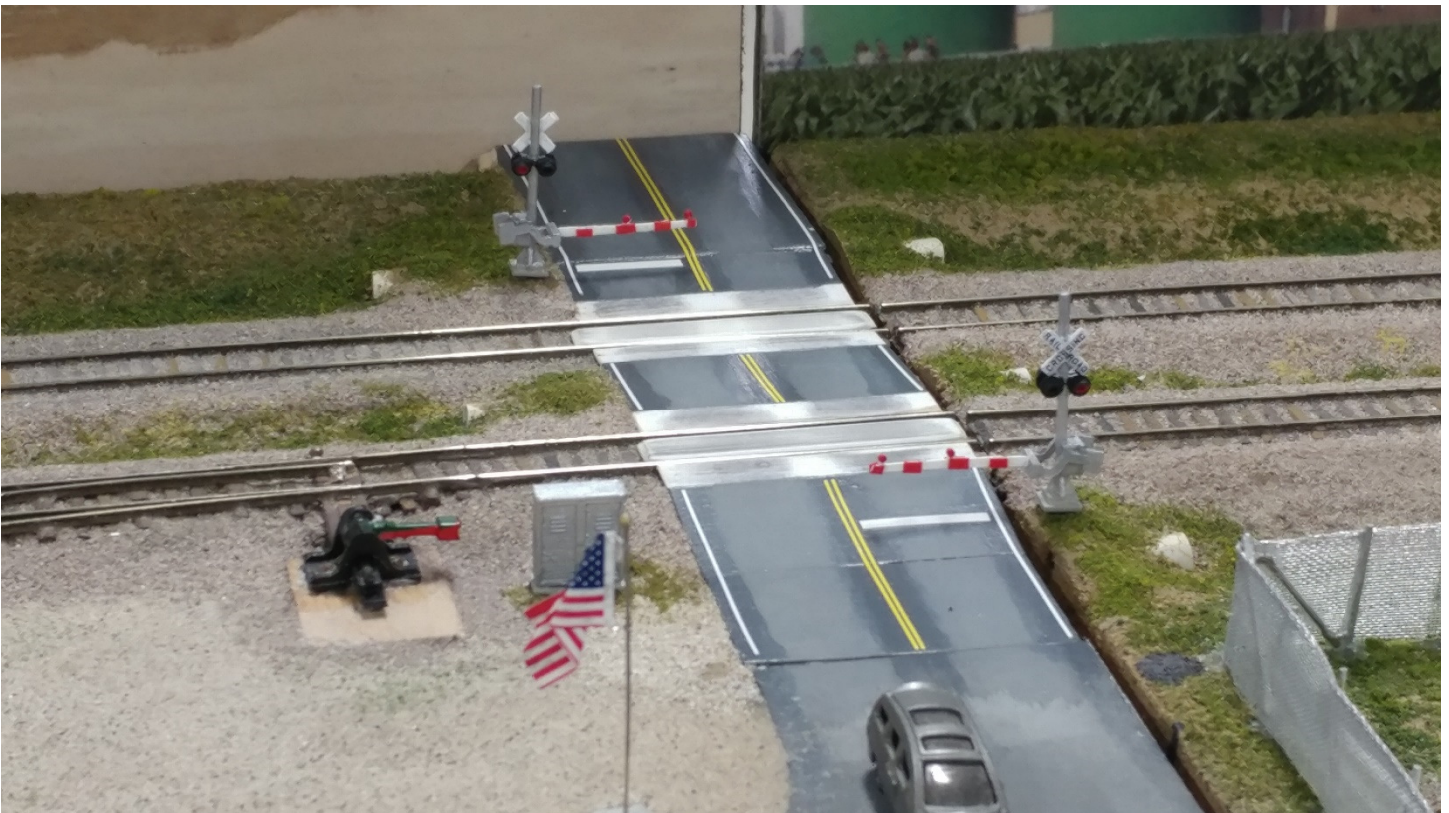
The OpSIG is a 501(c)3 non-profit corporation. For information on how to join the OpSIG, please visit www.opsig.org.

WKR Update



We had a slight set-back with the WKR recently, so all activity came to a halt. (Top Left) The metal building has an attic access hatch right above the layout and on a particularly windy day, as I raised the garage door in front, the double door in the divider wall burst open and the hatch was blown out plus insulation was blown out all over the layout (Above Right).

I have spent some time with the vacuum cleaner, vacuuming the layout section by section (it was getting a bit dusty) before operations resume but I did get a new grade crossing installed (Below).



WKR Update



Please remember to visit often and contribute to the **Mid-Continent Region's Facebook** page

<https://www.facebook.com/groups/1851848998468077>

Honey, when you're finished watering I need to talk to you about a receipt I found for Model Trains



Two weeks later...





You can register for free and receive Model Railroad Hobbyist Magazine each month in your e-mail box
Just click on the link below:

<https://model-railroad-hobbyist.com/magazine>

If you enjoy **YouTube**, be sure to check out the action on the Western Kansas Division's Channel

https://www.youtube.com/channel/UC9EPv8cQ04rRGAYts-734jw?view_as=subscriber



Click on this link for the latest video on the channel

<https://www.youtube.com/watch?v=VBQM9otAcqE&t=405s>



Visit the Web Page of the Mid-Continent Region

<http://mcor-nmra.org/>

Upcoming Events

Save the date! The 2021 joint convention with the LSR is set for June 17-20, 2021 in Tulsa.

Date Book

Most events through July are cancelled due to Covid-19, please check with the host Club before traveling

September 2020

26th & 27th
Sat & Sun

26th Annual Wichita Model Train Show
Cessna Activity Center

<http://www.wichitatomymuseum.org/>

Wichita, KS



On the back cover:

One final look at the On30 layout of Mark Fisher of the Boot Hill Model Railroad Club.

The **Main Line**

Publisher & Editor: Robert A. Simmons

The newsletter of the Western Kansas Division is published monthly for no charge by Robert A. Simmons, Division Superintendent / Director

Copyright 2020, by Robert A. Simmons, all rights reserved

If you have a change of e-mail address, or no longer wish to receive the newsletter, please contact Robert Simmons

Trainman55@hotmail.com or P.O. Box 157 – Dodge City, KS. 67801 or call (620) 521-3591

Please send all inquiries, ideas, or submissions to: trainman55@hotmail.com