

Caboose Kibitzer

3th Quarter 2012 VOLUME 62, ISSUE 3



CALLBOARD

President Whitney D. Johnson 1117 E 16th St S Newton, IA 50208-5076 (641) 792-0712 E-mail: whitjohnson@mchsi.com	Vice-President Allen G. Merta, MMR 5919 Purple Dr. NE Cedar Rapids, IA. 52402-1317 (H) 319-393-2990 E-Mail: ar.merta@mchsi.com	Secretary Brad Morneau MMR 7705 W 154 Terr Overland Park KS 66223-2280 (913)-897-0669 E-mail: bmorneau@kc.rr.com	Treasurer Dennis M. Brandt MMR 1004 South 3rd Street Norfolk, NE 68701-6302 (C) 402-992-2415 E-mail: dennisbrandt44@gmail.com	
Membership Chairman Whitney D. Johnson 1117 E 16th St S Newton, IA 50208-5076 (H) 641-792-0712 E-mail: whitjohnson@mchsi.com	Membership Dispatcher John A. Shaw 225 Wasatch Court NE Cedar Rapids, IA 52402-3386 (H) 319-265-8122 (C) 913-636-3710 E-mail: jashaw@shaw-web.net	New Member Chairman Richard Hester 1407 E Fair Acres Dr McCook, NE 69001-4208 (308) 345-5528 E-mail richardhester017@gmail.com	Member Aid Co-chairman John Plott 2109 Ave M Council Bluffs, IA 51501-0968 (712) 323-7153 E-mail trains20@cox.net	Member Aid Co-chairman John H. Averill 14910 92nd Ln Indianola, IA 50125-7261 (515) 961-3018 E-mail GMDMCoR@cs.com
Achievement Program Chair Brad Morneau MMR 7705 W 154 Terr Overland Park KS 66223-2280 (913)-897-0669 E-mail: bmorneau@kc.rr.com	Education Chairman Don Wetmore 614 Osage Dr Papillion, NE 68046-2433 (402) 740-9642 E-mail StJoeTerminal@cox.net	Merit Badge Coordinator Bob Folkmann 1326 Burmett Ave. Ames, IA 50010 (515) 232-8689 E-mail: rfoalkmann@mchsi.com	Internet Webmaster John A. Shaw 225 Wasatch Court NE Cedar Rapids, IA 52402-3386 (319) 265-8122 Cell (913) 636-3710 E-mail jashaw@shaw-web.net	Convention Chairman Larry R. Alfred, MMR 14633 S Chalet Dr Olathe, KS 66062-2527 (913) 782-6584 E-mail lalfred2@comcast.net
2013 Convention Chairman Larry R. Alfred, MMR 14633 S Chalet Dr. Olathe, KS 66062-2527 (913) 782-6584 E-mail: captlalfred@gmail.com	Area Meet Chairman Nelson Moyer MMR 28 Ealing Iowa City, Ia 52246-4717 (319) 351-8775 E-mail ku0a@mchsi.com	Clinic Chairman Don Wetmore 614 Osage Dr Papillion, NE 68046-2433 (402) 740-9642 E-mail StJoeTerminal@cox.net	Model Contest Chairman Whitney D. Johnson 1117 E 16th St S Newton, IA 50208-5076 (H) (641) 792-0712 E-mail whitjohnson@mchsi.com	Photo Contest Chairman Allen G. Merta MMR 5919 Purple Dr. NE Cedar Rapids, IA 52402-1317 (319) 393-2990 E-mail ar.merta@mchsi.com

BOARD OF DIRECTORS

Indian Nations Division Dave Salamon 17924 E 92nd St N Owasso, OK 74055-8068 (H) 918-272-5512 E-mail: drs_rr@yahoo.com	Turkey Creek Division Louis Seibel 1096 N Logan Olathe, KS 66061 (H) 913-393-3495 E-mail L-Seibel@comcast.net	Kate Shelley Division Bob Folkmann 1326 Burnett Ave. Ames, IA 50010-5454 (515) 232-8689 E-mail rfoalkmann@mchsi.com	Eastern Iowa Division Benjamin A. Merta 3140 25th Avenue Marion, IA, 52302-1413 (319) 447-5899 E-mail bemerta@gmail.com	Western Heritage Division Barbara Lundquist 504 Pioneer Rd Papillion, NE 68046-3778 (H) 402-597-3988 E-mail: blundquist1@cox.net
Kansas Central Division Richard Napper, MMR 7244 NW US Hwy 24 Topeka, KS 66618-5605 (785) 582-4209 Fax (785) 582-5268 E-mail renapper@centurylink.net .	Chisholm Trail Division Philip R. Aylward 603 Chestnut St Halstead, KS 67056-2302 (316) 830-3498 E-mail aylward1@cox.net	Maple Leaf Area Steven P August 1605 S W Eling St. Bentonville, AR 72712-9551 (479) 969-7857 E-mail steven@august.org	South Central Missouri Area Brad Slone MMR PO Box 313 Dixon, MO 65459-0313 (573)308-7144 E-mail bradslone@yahoo.com	Gateway Division Philip (Phil) G. Bonzon MMR 7458 Kingsbury Blvd University City, MO 04054 (H) 314-727-0075 (C) 314-803-7158 E-mail: pgbonzon@aol.com
Ozark Mountain Area James F. Dimatteo 190 Western Ave Branson, MO 65616-8618 (417) 239-0436 E-mail jbdimatteo@aol.com	Northern Arkansas Area Unassigned	Little Rock Area Daniel H. Gladstone 5 Rebecca Ln Greenbrier, AR 72058-9490 (H) 501-269-3030 E-mail: dgeehot@hotmail.com	Cowboy Line Division James B Van Delden 902 Nebraska St. Wayne, NE 68741-1428 (402) 833-5581 E-mail genjvan@msn.com	Oklahoma Heartland Division J. Gary Tyler 9501 Winding Hollow Rd. Oklahoma City, OK 73162-9105 (405) 796-7320 E-mail tylerenergy@aol.com
Northern Oklahoma Area Dan L. Harris PO Box 3604 Enid, OK 73702-3604 (580) 233-4452 E-mail harris_dan@sbcglobal.net	Western Kansas Division Robert A. Simmons 2710 Shamus St. Garden City, KS 67846-3251 (620) 272-0444 E-mail ras@odsgc.net	Platte Valley Division Todd L. Peterson 984 K Road Minden, NE. 68959-6011 (H) 308-832-2050 E-mail: todd@gtmc.net	Iowa Rails Area Michael E. Worley 320 E 13th St Washington, IA 52353-2643 (319) 653-3782 E-mail meworley@iowatelecom.net	North Central Missouri Area Todd Leftwich 700 Lewis St Canton, MO 63435-1447 (H) 573-288-5972 E-mail: redmountainspike@hotmail.com
Fallen Flags Division Rev. Douglas Harding Box 472 Keosauqua, IA. 52565-0472 (H) 712-754-2624 E-mail doug_harding@iowacentralrr.org	Nebraska West Central Div. Gene R. Tacey PO Box 485 Sutherland, NE 69165-0485 (308) 386-2489 E-mail taceys@gpcom.net	Great Midwestern Division John H. Averill 14910 92nd Ln Indianola, IA 50125-7261 (515) 961-3018 E-mail GMDMCoR@cs.com	Southern Arkansas Area	

Caboose Kibitzer

Official quarterly publication
of the Mid-Continent Region
of the National Model Railroad
Association

www.mcor-nmra.org

Editor

Ted Tschirhart
4954 Marsh Avenue
Kansas City, MO 64129-2111
(816) 861-3449

caboosek@kc.rr.com

Assistant Editor

Robert A Simmons
2710 Shamus
Garden City, KS 67846-3251
(620) 272-0444

trainman55@hotmail.com

Advertising Manager

Louis Seibel
1069 N Logan
Olathe, KS 66061-6321
(913) 393-3495

l-seibel@comcast.net

Submissions: The Caboose Kibitzer
welcomes articles, photographs and
other model railroad or railroad-related
contributions. Contact the editor for
more information.

Advertising: All advertising inquiries
should be directed to the Advertising
Manager. MCoR reserves the right to
refuse or drop advertising for any reason.

Advertising in the Caboose Kibitzer
in no way constitutes an endorsement
by MCoR or the NMRA.

Deadlines: All materials submitted
for publication must arrive no later than
the dates listed below to be considered
for inclusion in that issue:

Second Quarter 2012 . April 30, 2012

Third Quarter 2012 . . July 31, 2012

Fourth Quarter 2012 October 31, 2012

First Quarter 2013 . . January 31, 2013

Membership: As of October 1, 2005,
membership in the regional and Division
level is included in membership
dues paid to the NMRA.

© 2011 Mid-Continent Region

Printed in the U.S.A.

Front and Back Cover Front and Back
Cover Inside of Kansas City Union
Station Holiday pictures front cover
picture by Roy Inman and back
cover picture by Louis Seibel

waybill

Second

Volume 62, Number 2

Features

DCC Track Power Supply for Cabooses & Passenger Car Lightning By
Richard E Napper MMR pages 12-15

CTC Styled Control Panel by Royce Brown pages 18-22

Departments

Call Board page 2
The Head End page 4
Conductor's Call page 4

Regional Clubs page 6
The Switch List pages 7-8
Dealers Directory page 24
Pike Registry pages 25-26

NEXT Month ?

**What will you send me
To put in this newsletter**

caboosek@kc.rr.com

Photos must be 600 dpi

816-861-3449

**Dead line for 3QT October 31,
Dead line for 4QT November 30,**

Don't run just hurry.

ted

The Head End

by Whit Johnson
MCOR PRESIDENT

Conductor's

Call

BY TED TSCHIRHART Editor

**Please send any changes
address
email
deaths**

**Send to your information to
Your director see page 2.**

Editor Ted Tschirhart
4954 Marsh Avenue
Kansas City, MO 64129-2111
(816) 861-3449
caboosek@kc.rr.com



HAVE 50 MODEL RAILROADING CLINICS RIGHT IN YOUR LIVING ROOM.

Just because you can't make it to a national convention doesn't mean you have to miss out. Right now the NMRA's Kalmbach Memorial Library has over 50 DVDs of clinics presented at national conventions from 2002 to 2010. Each is available for NMRA members to borrow for the cost of processing and postage.

So you can see clinics on everything from decoders to design, tools to techniques, helixes to highways, and research to resin casting.

All from the comfort of your very own couch.

Visit www.nmra.org and go to the Kalmbach Memorial Library page for a complete listing. Or call the Library at 423-894-8144.



We make it even more fun.

www.nmra.org

Then, get that popcorn ready.

NMRA AP Group Rules and Regulations

The NMRA Achievement Program Yahoo Group is for those who are members of the NMRA and are working on their Achievement Program Certifications. Here you can get questions answered, find a mentor/coach, or get a kick in the pants to get you started. The group is about helping people.

We REQUIRE that you be an NMRA member and if you are signing up, please provide us your NMRA membership number. Not a member? Please join! www.nmra.org. While you are there, read the rules and regulations for the Achievement Program.

<http://www.nmra.org/education/achievement/>

90% of the questions that are being answered on the forum are in the regs.

Naturally things turn to the dark side from time to time, so here are some guidelines.

BEFORE YOU HIT SEND, ASK YOURSELF...

- Did I ask for help?

Did I help someone?

If your message can't pass the test then you are probably talking about NMRA politics, whining, complaining or way off topic. Please be on your best behavior. This is a fun site and we would like to keep profanity and rudeness off the list. The moderator has an itchy trigger finger!

Topics that are allowed:

- AP Topics on any of the 11 possible AP Certificates
- MMR questions
- National/Regional/Divisional/International AP Chairman questions
- Questions about contest rules
- Questions about model research, assembly, et al.

Questions about merit judging

Topics that are NOT allowed:

- NMRA politics
- Recommendations for improving/modifying or changing AP guidelines (send those to the NMRA)
- Politics in general
- Religious topics
- Off topic gags and jokes

Accusations or criticism of any member

This is a PRIVATE group for friends that are working on their NMRA and Moderators are not required to warn members of being put on moderate status or suspension or removal of membership. While we are not an NMRA sanctioned group, we do follow NMRA rules and will act to promote the organization.

If you are moderated/banned from the group and you think it was done unfairly, you are welcomed to contact the list owner Scott Perry at scottgperry@comcast.net.

Please address questions to Scott Perry at scottgperry@comcast.net. We're glad to have you aboard!

Scott Perry

List Owner

REGIONAL WEB DIRECTORY

MID-CONTINENT REGION

www.mcor-nmra.org

INDIAN NATIONS DIVISION

www.tulsanmra.org

TURKEY CREEK DIVISION

www.tc-nmra.org

KATE SHELLEY DIVISION

www.mcor-nmra.org/division/KateShelley

EASTERN IOWA DIVISION

www.eid.mcor-nmra.org

WESTERN HERITAGE DIVISION

www.whdnmra.info

KANSAS CENTRAL DIVISION

[www.mcor-nmra.org/Divisions/
KansasCentral](http://www.mcor-nmra.org/Divisions/KansasCentral)

GATEWAY DIVISION

www.gatewaynmra.org

OKLAHOMA HEARTLAND DIVISION

www.okcnmra.org

REGION CLUB ROSTER

Big Bend Railroad Club, Inc.
8833 Big Bend Blvd.
Webster Groves, MO 63119-3731
www.bigbendrrclub.org
Facebook
secretary@bigbendrrclub.org
(O)

Capital City Model Railroaders
PO Box 243
Jefferson City, MO 65102
(HO)

Central AR Model RR Club
P.O. Box 1825
Conway, AR 72033-1825
Daniel Gladstone 501-269-3030
www.artrains.org
(all)

Claremore & Southern
3049 Clover Creek Dr
Claremore, OK 74017
(HO)

Columbia Model Railroaders
410 Camelot Dr
Collinsville, IL 62234
(HO)

Eastern Jackson County Mainliners
Model Railroad Club
Outlet Mall, Odessa, Mo
www.easternjacksoncountymainline.com

Greater Kansas City Model Railroad Club
Walter L. Ohnrell, President
6060 NW Waukomis Dr. N.W.
Kansas City, MO 64153
wohnrell@kc.rr.com

No web site at this time
Brush Creek and Western - three tier
scale railroad, era between 1935-1975
(HO)

Greater Omaha Society of Model Engineers
Post Office Box 67
Council Bluffs, IA 51502
Brian Wiaters
402-895-0296 or 402-491-3692
SOME@TheHistoricalSociety.org
(HO, G, O)

Green Valley Baptist Model RR
11993 County Rd 162
Savannah, MO 64485
Nancy Adams 816-262-0304
nadaams@bi-vetmedica.com
Kansas Area N-Trak
2046 S Elizabeth #1306
Wichita, KS 67213
(N)

Kansas Central Model Railroad Club
Charles Moll
3106 Tulane Place
Hutchinson KS 67502
c.moll@sbcglobal.net
H) 620-663-8167
(HO)

Kansas City Garden RR Society
David Roberts
24595 Hedge
Paola, KS 66071
GScalefun@hotmail.com
913-406-3400

Kansas City Module "O"
Jack Ferris, Secretary/Treasurer
10334 Ash
Overland Park, KS 66207
fns1955@gmail.com

2 Rail O Scale Modular Layout - double
track main line with 4 track staging yard
plus On3 single track loop. Control is
wireless DC. (O)

Kansas City Soc. of Model Engineers
John Teeple, President
9539 Perry Ln.
Overland Park, KS 66212
913-492-4142
jsteep@aol.com

Kirkwood Railroad Association
Rich Velten, Treasurer
100 N. Sappington Rd
Kirkwood, MO 63122
rmvelten@swbell.net
www.krra-stl.org

We meet every Thursday evening from
7:00 PM to 9:00 PM.
(HO)

Manhattan Area Rail Joiners
1223 Pierre St
Manhattan, KS 66502-4331
Contact: Don Clagett
dclagett@ksu.edu
785-537-7624

Mississippi Valley N Scalers
20 Apostle Ct
Fenton, MO 63026
<http://mvns.railfan.net>
mvns@railfan.net
(N)

Missouri Northern Railroad Society Inc.
PO Box 12591
North Kansas City, MO 64116
(HO)

Modular HO Narrow Gauge Society
914 Summer Leaf Ct
Saint Peters, MO 63376
(HO)

Mo-Kan RailJoiners
1069 N Logan
Olathe, KS 66061
913-393-3495
l-seibel@comcast.net
(all)

Nebraska Railroad Museum
1835 N Somers Avenue
Fremont NE 68025
1'-1'
Dave Fachman
402-727-0615
fevr@fremontrailroad.com
www.fremontrailroad.com

Nishna Valley Railroad Society
1303 Eighth St
Harlan, IA 51537
(HO)

Northeast Kansas Garden Railway
Society (NEKAN-GRS)
1308 SW Caldon
Topeka, KS 66611-2412

Northwest Kansas Model Railroad Club,
603 S Smokyhill,
Oakley, KS 67748-2321
Oklahoma N-Rail
Bruce Alcock, President
P.O. Box 96131
Oklahoma City, OK 73143
info@oknrail.org
<http://www.oknrail.org>
N Scale

Layout at Crossroads Mall, I-35 and I-
250 next to where Macy's used to be.
Open Saturday 10am to 9pm and
Sunday, noon to 6pm.

Ozark Model Railroad
Association
424 W Commercial
Springfield, MO 65803
(all)

Parsons Model Railroad Engineers
Cherryvale Depot
Cherryvale, KS 68335
(HO)

Southern Illinois Train Club
PO Box 1633
Mriion, IL 62959-7833
(HO, N, G)

Southwest Independent
Modular Railroaders
3107 W Capitol
Little Rock, AR 72209
(HO)

The Sugar Creek Model Railroad &
Historical Society Inc.
PO Box 5452
Bella Vista, AR 72714
(all N modules for shows)

Tri-City Model Railroad
Association
607 S Shore Dr
Hastings, NE 68901
(HO, N)

Union Station Kansas City Model
RailRoad Society
Ted Tschirhart
816-816-3449
30 West Pershing Road
Kansas City,, MO 64108
9am 5pm
tedtschi@kc.rr.com
N,HO, HO MARKLIN, S, O, G, STANDARD
Also WOOD Trains

Warren County Modular Railroaders
Transition era. RI &CB&Q
Iowa's only 100% NMRA club
John Averill 515-961-3018
14910- 92nd Lane
Indianola, IA 50125
HO Scale,
WCMR1@cs.com
Wichita Model Railroad Club
PO Box 48082
Wichita, KS 67201

Please send new club info
Or any changes to
caboose@kc.rr.com

Eastern Iowa Division is
hosting an Op Session Week-
end April 5, 6, and 7, 2013.

I have attached a flyer of our
event and a link to our web-
site:

<https://sites.google.com/site/eid2013opsessionweekend/home>

Operating spots may fill up
fast so don't hesitate and reg-
ister early to take part as an
operating crew member.

Thanks,
Tony J. Bowen, MMR

Eastern Iowa Division Superin-
tendent / Webmaster
<https://sites.google.com/site/easterniowadivision/home>

THE SWITCH LIST

THIRD QUARTER 2012 By Louis S

THE SWITCH LIST – January 2013

*new since last issue

The Switch List contains all known Mid-Continent Region, NMRA, train shows and Division meetings. It also lists all known club shows and swap meets in the Mid-Continent Region (IA, IL, MO, AR, NE, KS, and OK). To list your event information please

Email: l-seibel@comcast.net, or Mail Information: Louis Seibel, 1069 N Logan, Olathe KS 66061. To subscribe, or unsubscribe, to The Switch List send an email to the above link. Look for us on the MCoR web site: www.mcor-nmra.org. **Please put me in your newsletter.**

DIVISION MEETINGS

COWBOY LINE DIVISION (NORFOLK, NE)

meets 3rd Thursday each month, 7:00 P.M. at Hy Vee East upstairs meeting room. Corner of 1st Street and Norfolk, Ave. Info: James B Van Dekden, Div. Dir. (genjvan@msn.com) (402) 833-5531 for more information.

***EASTERN IOWA DIVISION OPERATING SESSION WEEKEND**, April 5-7, 2013. Weekend activity schedule: Friday meet and greet with evening layout tours, Saturday chose from six home layouts to operate with both morning and afternoon sessions. Layouts are located in Cedar Rapids, Iowa City and Coralville, IA. Dinner Saturday evening is at Bartram, IA town hall next to the Union Pacific mainline with clinics and door prizes after dinner. Sunday choose from two different club operating sessions hosted by the Hawkeye Model Railroad Club in Coralville, IA or Midwest Trains in Bettendorf, IA. Advanced registration is required. Visit the EID web site for information on registration and scheduling. <https://sites.google.com/site/aid2013opsessionweekend/home>

GATEWAY DIVISION (ST. LOUIS, MO) meets 3rd Monday each month, 7:00 P.M. Odd numbered months: Trinity Lutheran Church, 14088 Clayton Road at Woods Mill Rd (Hwy 141), Ballwin, MO; Even numbered months: VFW Hall, O'Fallon, IL <http://www.gatewaynmra.org/division.htm>

INDIAN NATIONS DIVISION Unless other-

wise specified, all Indian Nations NMRA meets are held at the new Hardesty Library, 8316 E. 93rd. St., just east of Memorial Rd. in Tulsa, OK. The library opens at 9:00 am and the meetings start at 9:30 am. Web page: www.tulsanmra.org Superintendent - Dave Salamon (918)272-5512 or drs_rr@yahoo.com

KANSAS CENTRAL DIVISION Meetings are at 1:00 pm. For the full schedule check the MCoR website or email: garyonho@cox.net

KATE SHELLEY DIVISION meets the 4th Thursday of every month except Nov. which we meet the 3rd. Dec. we have no meetings. The Ames Public Library is being remodeled, so contact KSD officers per the NMRA website for latest meeting place. This arrangement is in effect until mid-summer 2014. Business meeting starts at 6 PM and at 7 PM we have a get together, anything railroad goes. The Library is at 515 Douglas Ave. Contact KSD thru the NMRA web site.

Indian Nations Division, NMRA
4th Annual Layout Design and Operations Weekend
March 22-24, 2013 Tulsa, Oklahoma
Operating Sessions Friday night, Saturday night and Sunday morning (see web site for descriptions of the 11 available operating railroads).
Clinics all day Saturday plus a layout design challenge.
This year's presenters include Mike Porter, Robert Bornfleth, Barry Karlberg, Marc Montray, Steve Newton and Jim Senese.
Registration fee includes lunch and beverage.
For additional information visit: ldopsigmeet.tulsanmra.org

OK HEARTLAND DIVISION, NMRA meets in the even months in the Oklahoma City area. All who are interested in Model railroading are welcome. Info: www.okcnmra.org

PLATTE VALLEY DIV. (HASTINGS, GRAND ISLAND, and KEARNEY, NE) meets 2nd Tuesday of each month at 7:00 p.m. in mem-

bers' homes on a rotating basis. Info: John O'Neill, MMR, Div. Dir., 308-384-5011 or jponeill@computer-concepts.com.

TURKEY CREEK DIVISION, NMRA, Meetings are held on the fourth Tuesday of the month at 7 p.m. meetings will be at the Nieman Elementary School, 67th & Nieman Road, Shawnee, KS. Check the Division Timetable at <http://www.tc-nmra.org/TC-Calendar.html> for current information. Info: Louis Seibel, Division Director 913-393-3495 or 913-927-6850 [l-seibel@comcast.net](mailto:seibel@comcast.net)

WESTERN HERITAGE DIVISION (OMAHA, NE / COUNCIL BLUFFS, IA) meets second Saturday (except June and December) at noon in the Sump Library at 2nd & Washington Streets in Papillion (across from Runza). Visit www.whdmra.info for more info and a map. The new web site is found at <http://www.whd.mcor-nmra.org>

WESTERN KANSAS DIVISION (GARDEN CITY, KS) Meets every Tuesday evening from 6:30 P.M. to 9:00 P.M. at 4091/2 N. Main St. (second floor above "Stage" department store) 7 layouts on display (2-HO, 5-N) Operating sessions available Info: Robert Simmons, Division Director (620) 521-3591 or ras@odsgc.net

TRAIN SHOWS & MEETS

January 12-13, 2013 – WORLD'S GREATEST HOBBY ON TOUR, ST. LOUIS SHOW, America's Center, Introducing the public to model railroading, recruit new club members, see display and operating layouts. Information and layout application at <http://www.wghshow.com/pdf/layout.pdf>. For more information, see www.wghshow.com.

January 19, 2013 – ST. CHARLES MODEL RAILROAD CLUB TRAINFAIR 2013, Heart of St. Charles Banquet Center, I-70 & 5th St. 10:00 a.m.-3 p.m., Admission \$5, children under 12 free with adult admission. Show includes vendors, operating train displays, HO scale module layout, N scale free-MO sections. For information, contact Rod Stratman at 314-960-1955 or visit the web site at <http://www.stcharlesrailroadclub.com>.

January 19-20, 2012 – 28th Annual Train Show, Plano Centre, 2000 E. Spring Creek Parkway, Plano, TX 75074.

January 26, 2013 - 22nd Annual La Crosse Great Tri-State Rail Sale, La Crosse Center, 2nd and Pearl St, La Crosse, WI, 9 a.m. to 3 p.m. Admission \$5.00, children under 12 free. Vendors from six states, over 280 tables. All scales, antiques, memorabilia, books, magazines, pictures, hobby supplies and more. Contact Dan Anthony at 608-498-9522 or 608-781-9383 or visit www.4000foundation.com for information. Proceeds go for maintaining and restoring the La Crosse Short Line Railroad display.

February 9, 2013 – FOX HIGH SCHOOL AND DIRK'S TRAINS, THE WARRIOR EXPRESS, Fox High School, 751 Jeffco Blvd., Arnold, MO 63010, 10 a.m.-3 p.m., Admission \$3, 12 and under free. Operating layouts. Vendors, 220 tables. Contact Dirk Reynolds, 1232 Glenwood Drive, Columbia, IL 62236m 618-673-2237.

February 9-10, 2013 (note date correction) – WICHITA TRAIN SHOW & SWAP MEET, Cessna Activity Center 2744 George Washington Blvd. Wichita Kansas. Admission \$6.00[good for both days]. Children 10 and under free with paid adult. Scouts in uniform are admitted free. Two Full Days of Excitement, Operating Modular Layouts, Switching Contest, Model Contest, Photo Contest, Live Clinics, Over One Hundred Tables, Home Layout Tours, Vendors: Eight foot tables \$25.00 each. Advance Table Registration before 12/31/12 take 10% off. Contact Phil Aylward 316-830-3498 or Engine House Hobbies 316-685-6608 or 1-800-586-3498 Mail Registrations to 603 Chestnut. Halstead, KS 67056-2302 Email: aylward1@cox.net

February 16, 2013 -Lawrence Model Railroad Club Presents: 12th Annual Model Railroad Show & Swap Meet
At the Douglas County Fairgrounds, Building 21
2120 Harper Street, Lawrence, KS (2 blocks north of K10 on Harper)
Show time Saturday, February 16, 2013 9am to 5pm always free parking. Admission: \$6 Donation, Children under 12 Free, Lawrence Model Railroad Club supports **L.I.N.K. Inc. Food pantry canned food donations valued over \$1 will receive a \$1 off the admission price.**
Part of the proceeds will be donated to **L.I.N.K.** (Lawrence Interdenominational Nutrition Kitchen). **L.I.N.K.** is a pleasant and

safe place for the hungry or lonely to share a free meal and the companionship of one another.

Table rent (8ft) paid by January 31, 2013:

\$20.00 per table

Table rent (8ft) paid after January 31, 2013:

\$25.00 per table

If you would like to be a vendor at the show please send email to contact information below.

Show coordinators: Jan Brocker and Bill Hubbard Address: 1031 Vermont Street, Suite A, Lawrence, KS 66044, Phone: 785-766-0467 or 785-856-1490, Email: brock-er@sunflower.com or billhubb2007@yahoo.com , www.lawrencemodelrailroadclub.org

February 23, 2013 – TENTH ANNUAL GREAT NWA MODEL TRAIN SHOW, 9 a.m. to 4 p.m., Holiday Inn NWA Convention Center, Springdale, AR. Grand prize drawing for two round trip tickets on Amtrak Texas Eagle, over 40 vendors from three states, layouts, model demos, door prizes, and more. For more information email train072@cox.net or visit www.trainshow-NWA.org.

March 16, 2013 - 35th ANNUAL OZARKS MODEL RAILROAD ASSOCIATION TRAIN AND SWAP MEET, REMINGTON'S 1655 W.

Republic Road, Springfield, MO 65807. Time: 9:00am to 3:00pm. Operating display layouts from AR, KS, MO and OK, many interactive activities for kids including operating a locomotive simulator, hands on modeling tips, ride the Kiddie Train, meet representatives from many railroad manufacturers, get you old pre-1970 train appraised or a diagnosis on what it will take to make it run again. Clinics, door prizes, food, and many more activities to be announced as they become available. Table rental is \$25 each including city license and lunch. A 10% discount applies to vendors participating in the September 22, 2012 swap meet. For infor-

mation on tables and special requests contact David Brashers, 1418 Rosewood, Republic, MO. 65738 or call 417-848-1739 or 417-848-1739 or email him at dbrashers69@yahoo.com. Registration is \$7, children under 12 free with paid admission. A portion of the proceeds will go to Crosslines, a local charity that helps those in need. For information contact Ron Williams MMR, 417-883-5350 or rwilliams3129@gmail.com.

March 30th, 2013 - THE JOPLIN MUSEUM COMPLEX'S TRAIN SHOW AND SWAP MEET will be held on Saturday, March 30th 2013, at the Joplin Museum Complex. The Museum Complex is located at 7th and Schifferdecker Streets in Schifferdecker Park. Hours will be from 9:00 a.m. to 3:00 p.m. Attractions to include several operating model railroad layouts along with over 65 tables of items for sale or trade. Admission: \$3.00, adults; children 12 and under admitted free with paid adult. All proceeds at the door go to benefit the Joplin Museum Complex. For more information, call Rick Gardner at (417) 673-4888; e-mail: rickgardner4449@gmail.com; or visit: www.tristatamodelrailroaders.com

TRAINS & TOYS !

Mid-America Train & Toy Show
2012 SHOW DATES
March 18 ~ August 26 ~ November 25

MOVING TO
KCI EXPO CENTER
11728 NW Ambassador Drive KC, MO
I-29 exit 13

Toys, Trains, Models, RR Collectibles, Toys & More
Admission: \$5 Adults – 12/under Free w/adult

Open 9am – 2pm
7 am Early Admissions \$10.00 each

Showing Free Train Movies * Door Prizes
200 Dealer Tables * Free Parking

For more information visit:
www.MidAmericaTrainAndToyShow.com

Steve & Sherri Stich @ 913.651.5864
POB 369 Leavenworth, KS 66048



Eastern Iowa Division Operating Session Weekend April 5, 6, & 7, 2013

The Eastern Iowa Division of the NMRA is looking forward to hosting our first 2013 Operating Session Weekend. We will have some great operating sessions on a couple of great railroads located in eastern Iowa.

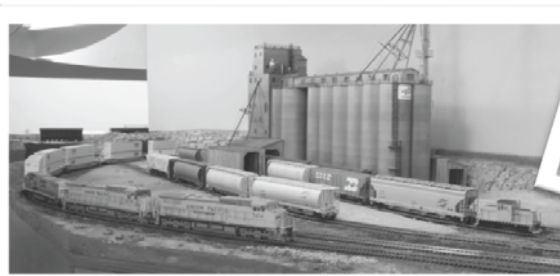
Weekend Activities Include:

- **Friday, April 5th** A "Meet and Greet" with evening layout tours
 - **Saturday, April 6th** Choose from six different home layouts to operate on during two different operating session times throughout the day. Layouts are located in the Cedar Rapids, Iowa City & Coralville areas.
 - **Saturday, April 6th** the Eastern Iowa Division will host an evening meal in Bertram, Iowa next to the Union Pacific mainline. The gathering will include two to three clinic presentations on model railroad operations. There will also be door-prize give-a-ways.
 - **Sunday, April 7th** Choose from two different operating sessions on either the Hawkeye Model Railroad Club in Coralville, Iowa, or Mid-West Trains in Bettendorf, Iowa.
-

Visit our website to register for the Eastern Iowa Division
2013 Op Session Weekend

<https://sites.google.com/site/eid2013opsessionweekend/home>

Register early and mail in your payment to secure a spot as an operator, as space will be limited



Brad Morneau, MMR

MCoR Achievement Program Chairman

Hello fellow modelers! I'm the new MCoR Achievement Program (AP) Chairman. I took over from Marty Vaughn just before the MCoR annual meet in St Louis this year. I would like to first thank Marty for his dedication to the AP the last 7 ½ years. He did a fantastic job and was instrumental in a large number of us earning our MMR's. Marty is also a very good record keeper and has left me with a very good start in the new job. I'm also very lucky to know our national AP chairman, Paul Richardson and the past national AP chairman Pat Harriman. Between Marty, Paul and Pat I am in really good hands to do this job properly.

My current interest in model railroading started about 22 years ago. I've built several layouts, but in 2005 decided to start a new one. When I did, I made a commitment to achieving my MMR while building the new layout. I decided to try new things while doing it, including DCC, hand-laying track new techniques in scenery etc. In September of 2010 I earned my seventh AP Certificate, Cars, and completed my MMR. Since that time I have also earned my certificate in association Official as well.

I believe the AP is one of the best things we have going in the NMRA. It encourages modelers to try things we might never have tried before and gives modelers a strong sense of

accomplishment. I also see the AP as a kind of connection to all of the modelers that came before us, especially the ones who started the hobby and most notably the ones who started the NMRA itself. When I received my MMR, I knew it was a milestone in my development in the hobby, not an end point. So I have tried to assist other modelers by holding AP work sessions at my home. These have been fun and interesting and I believe I end up learning more from the folks who attend than they do!

I would strongly encourage you to participate in the AP if you're not already doing so. And if you are, please keep going forward with it.

If you have questions/concerns, please don't hesitate to contact me @

bmorneau@kc.rr.com



TOTOTRAINS,LLC

**SPECIALIZING IN EUROPEAN TRAINS
MÄRKLIN/TRIX/LGB/ROCO/FLEISCHMANN**

**EVERY DAY DISCOUNTS ON
WALTHERS CATALOG ITEMS: 20%-35%**

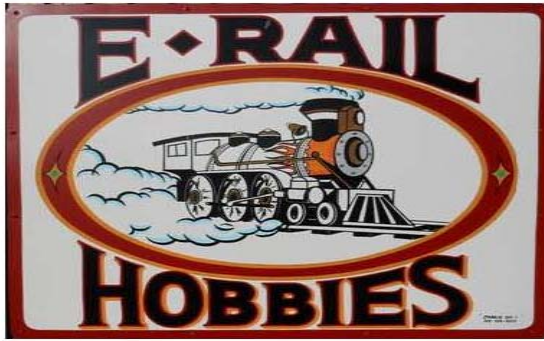
**HOURS: WED-SAT: 10.00AM-4.00PM
OR BY APPOINTMENT**

785-766-0467

WWW.TOTOTRAINS.COM

INFO@TOTOTRAINS.COM

**1031 VERMONT STREET, SUITE A
LAWRENCE, KS 66044**



We are a Full service Train shop with the latest items in stock at Internet Clearing house prices

Expanded selection of New and pre-owned items to suite your taste and budget

DCC - Systems, decoders, sound, wiring, and advice

We stock scratch building supplies to ready-made/ready to roll to suit YOUR needs

Repair facility and DCC Installation available

See our "Locomotive Wall of Fame" for N scale and HO scale

with over 400 locomotives on display available for you.



HO Wall of Fame



N Wall of Fame

Dealer for MTH, Broadway Limited, Marklin/Trix/LGB, Walthers/Proto2000/Trainline, Intermountain, Exactrail, Kadee, Hornby/Rivarossi/Arnold/Lima/Joeuf, Atlas, Kato, Bowser, Soundtraxx, TCS, and of course Digitrax, plus we stock much more!

E-rail hobbies is at 3306 Charles Page Blvd Tulsa, OK 74127, 918-382-0382
erailhobbies@cox.net

www.TulsaTrains.com

DCC Track Power Supply for Caboose & Passenger Car Lighting

By

Richard E. Napper, MMW

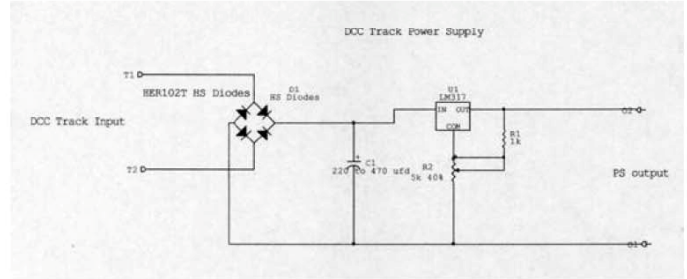
When using DCC, many of us like to light passion your cars and cabooses. One could go to all of the expense of installing a DCC decoder in your caboose or passenger car for the lighting; however, you can build a simple power supply for your lighting which does not require a decoder.

I have designed a small circuit board that will fit in HO scale caboose is and passenger cars for use in powering circuits directly from the DCC track power. The voltages is adjustable from 1.25 V DC 215 V DC up to 150 mA the current; some uses would be caboose marker lights or interior lights in both caboose is and passenger cars. My preference would be using LEDs, but this circuit will also run 1.5 V bulbs.

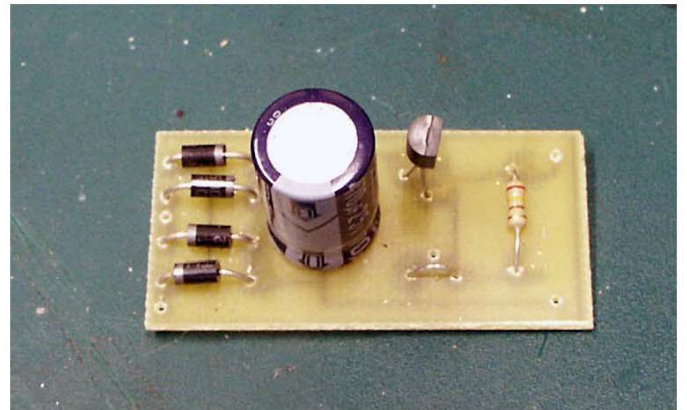
The DCC track power is a high-frequency pulse with modulated square wave; therefore, a standard bridge rectifier is not recommended for this application. Instead you should use high speed diodes to make up your bridge circuit. Here is the parts count for one 25 mm x 50 mm circuit board:

- 4 HER102T high speed diodes
- 1 220 470 ufd/25 WVDC radial lead the electrolytic capacitor
- 1 LM317LZ voltage regulator
- 1 240 ohm 1/8 Watt resistor
- 1 5K ohm board mount potentiometer
- 1 25 mm x 50 mm circuit board

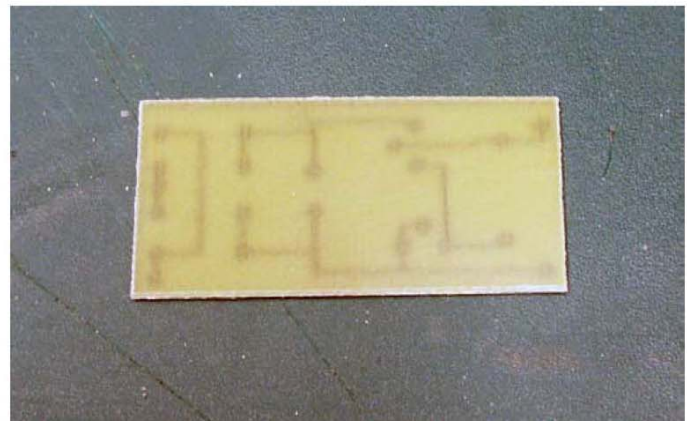
Here is the schematic of the full circuit:



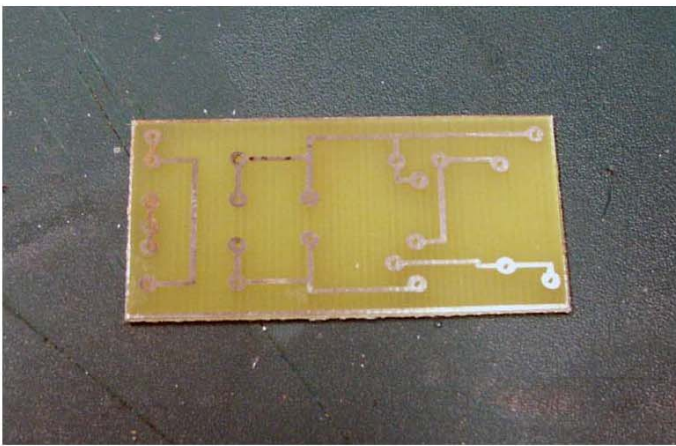
Here are photos of a finished circuit board wired for 1.25 VDC output for use with the 1.5 VDC blubs.



Here are both sides of a circuit board ready for parts.



Shows top of circuit board where you mount the parts.



This is the trace side of the circuit board.



If you wish to make the output voltage variable, then use this board mounted potentiometer. Its value should be 5K ohm; a 2K ohm is shown.

You can contact me at renapper@centurylink.net for the availability of circuit boards and/or completely wired power supplies.

If you wish to make your own circuit boards it's really not that hard to do. I purchase all of my products for making circuit boards from a company called Dalpro, they are in St. Louis Missouri.

Their E-mail is: sales@dalpro.net or their phone number is: one – 800 – 325 – 3878. I use six-inch by six-inch one-sided 1/16 inch thick two ounce circuit boards, part number: 62DF1/066G4.

To make a circuit board you will be using a photographic negative process. Thus you will need three chemicals; DFD – 12 G which is the developer, DF S – 12 G which is the stripper, and very chloride for your etchant.

I will provide you with the negative circuit board artwork shortly. I use overhead transparency film in a black and white LaserJet printer to make two copies of the artwork. The LaserJet printer does not grant a perfect transparency that is why I print two of them and stack them together; that way any imperfections on one sheet will be covered by the second sheet.

The printed circuit boards, with the negative photosensitive film already on the boards. All you have to do is expose it. You can use the yellow bug bulbs in a dark room, and it will not expose the circuit boards. Place the transparencies over the top or side of the circuit board, and expose it under ultraviolet light for two minutes; or you can take it outside in direct sunlight for about four minutes.

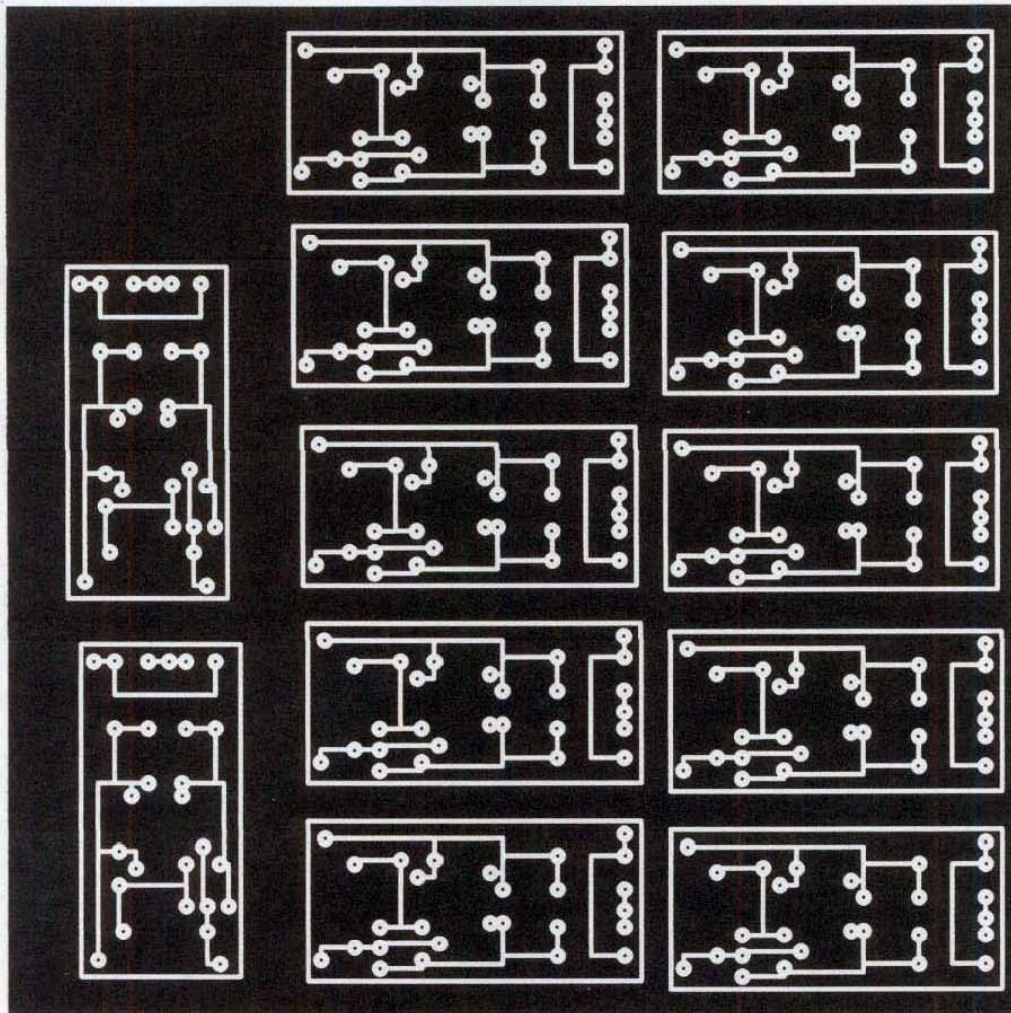
Put the expose circuit board back in the black light blocking package it came in and let it rest for 20 minutes. After that time remove the plastic film which is on top of the copper. Using a small sponge place the expose circuit board in a warm the solution of the developer; rub the circuit board with the small sponge for about two minutes.

Rinse the board in warm water and dry it; now put it in the ferric chloride etchant. You must keep the etchant moving over the board, and if you heed it up, the board will etch faster. It should take about 20 minutes; remember, continuous agitation is necessary to etch the board.

Rinse the board in warm water again and dry it. Place the board in a warm water stripper solution, and once again, rubbed the board with the small sponge for about two minutes this takes the developer film off of the top of the copper.

The circuit board is now finished, cut it apart to get the various circuit boards that you have made. Drill holes in all the pads on the circuit board and you are ready to mount the parts in solder the parts to the circuit board.

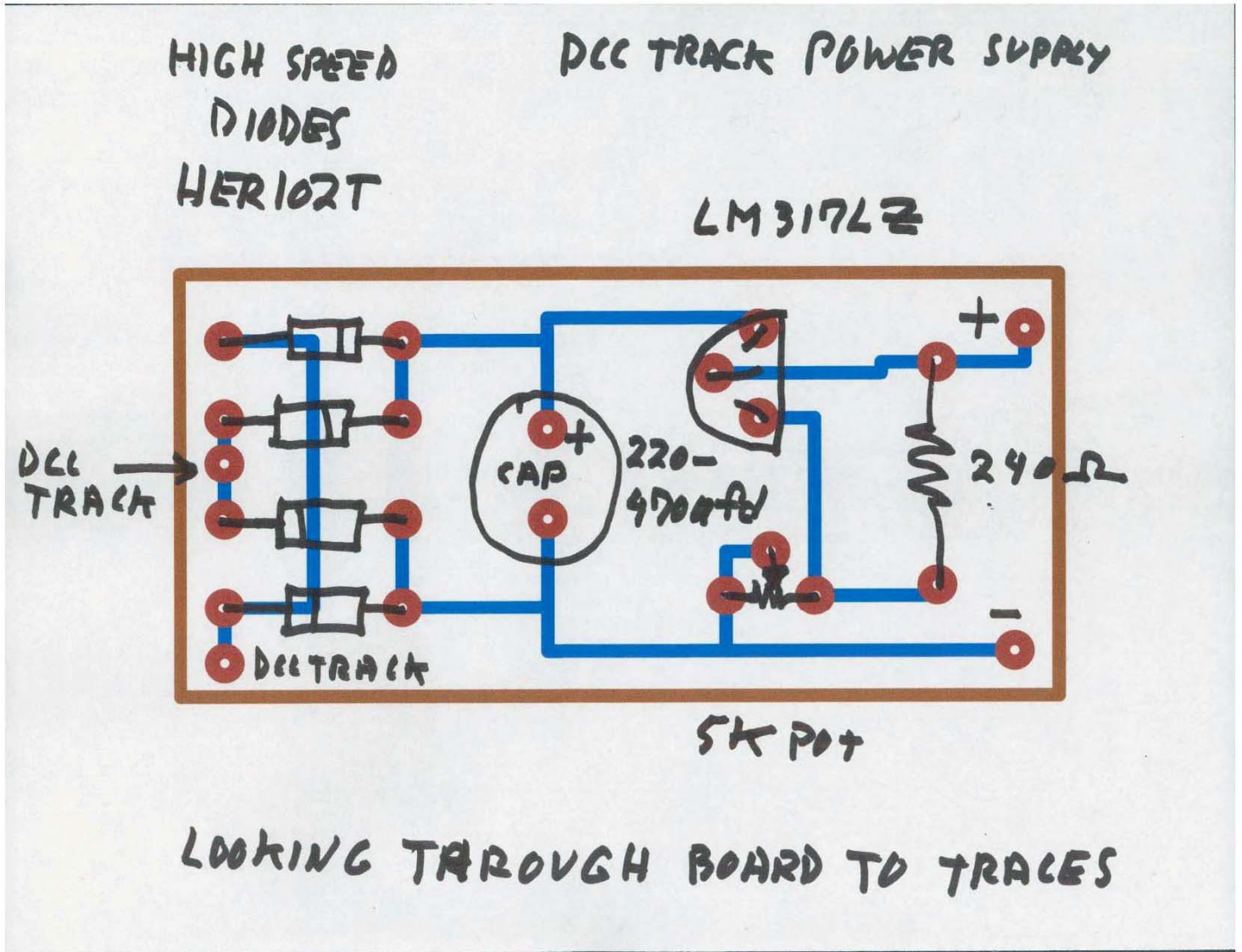
If you don't want to go to all this work, contact me at renapper@centurylink.net for parts and circuit boards.



This is the full size negative artwork for the circuit board. As you can see it makes 12 actual circuit boards on one 6" x 6" circuit board.

Copy this artwork onto two overhead transparency sheets.

Here is how to wire the circuit board with the parts:



This little power supply on a circuit board will easily fit into an HO scale caboose or passenger car. Have fun!

REMEMBER THE FRISCO!



4th ANNUAL TULSA AREA LAYOUT DESIGN AND OPERATIONS WEEKEND

March 22, 23 & 24

Presented by the Indian Nations Division of the NMRA
In conjunction with the LDSIG and OPSIG

Location:
Shriners Temple
2808 South Sheridan Rd.
Tulsa, Oklahoma 74129

Plan to Attend!

Workshop Presentations

Saturday March 23rd from 8:00am - 4:00pm

(Check Web page for detailed information on presentations and activities)

- **Mike Porter** – *A Dog's Breakfast of Layout Construction Information*
- **Barry Karlberg** – *Prototype Operations and Incorporating that into our Layouts*
- **Jim Senese** – *Changes and evolution of my KCT Railway.*
- **Robert Bornfleth** – *Designing, Building and Operating a layout based on a the prototype*
- **Steve Newton and Marc Montray** – *Thinking Outside the box for a layout with operations*

Additional Activities include:

- ✓ **Layout Design Element Challenge**
- ✓ **Bring your trackplans, photos, display boards and mockups to share with everyone, great place to solicit feedback on your layout!**
- ✓ **3 Operating sessions with several layouts available for each session**
- ✓ **Catered hot BBQ lunch**

Come Operate on Great Layouts!

Local layout operating sessions:

Friday March 22rd from 7pm - 10pm

Saturday March 23th from 7pm - 10pm

Sunday morning March 24th from 9am - 12pm

(Register early to secure spots as an operator on the layouts.)

Visit our web page to register using Pay Pal or fill out the registration on reverse side of this flyer.

<http://ldopsigmeet.tulsanmra.org/>

For registration questions email: ldopregistration@tulsanmra.org

For Layout Design Challenge questions email: ldopchallenge@tulsanmra.org

All other questions email: ldopchairman@tulsanmra.org



4th ANNUAL TULSA AREA LAYOUT DESIGN AND OPERATIONS WEEKEND

REGISTRATION FORM - March 22, 23 & 24

Please mail to:
Tom Fausser
LDOP Weekend
2457 E. 33rd Street
Tulsa, OK 74105

(Cash or check accepted; make checks payable to: Eastern Oklahoma Division)

Name: _____

Address: _____

Phone Number: _____

Email Address: _____

REGISTRATION BEFORE March 1st, 2013 - \$35.00; AFTER March 1st, 2013 - \$40.00
(Includes a Catered BBQ Lunch)

If you would like a shirt you must pre-order and pre-pay, select style and size

- | | | |
|--|---|--|
| <input type="checkbox"/> Polo Shirt | <input type="checkbox"/> Polo Shirt with Pocket | <input type="checkbox"/> Long Sleeve Denim |
| <input type="checkbox"/> Small \$28.50 | <input type="checkbox"/> Medium \$28.50 | <input type="checkbox"/> Large \$28.50 |
| <input type="checkbox"/> 2XL \$29.50 | <input type="checkbox"/> 3XL \$30.50 | <input type="checkbox"/> 4XL \$31.50 |
| <input type="checkbox"/> 5XL \$32.50 | | |

Yes, I would like to operate on the local layouts (visit web page for layout info):
(Select days you'd like to operate; Experience Level; and Rank the layouts by preference 1-12)

- | | | |
|---|---|--|
| <input type="checkbox"/> Friday Evening | <input type="checkbox"/> Saturday Evening | <input type="checkbox"/> Sunday Morning |
| <input type="checkbox"/> New Operator | <input type="checkbox"/> Average Operator | <input type="checkbox"/> Seasoned Operator |

- | | | | |
|----------|------------|------------|------------|
| ___ SP | ___ CNJ/LV | ___ KCS | ___ S&LC |
| ___ C&S | ___ ATSF | ___ DRS | ___ KCT Ry |
| ___ P&SM | ___ B&F | ___ GCMRRA | ___ MKT |

I am just attending the Workshop Presentations will not be operating

TOTAL AMOUNT PAID: _____

Register early to secure spots as an operator on the layouts!

(For Internal use below the line)

Date Received:

Registration #:

A CTC Styled Control Panel

Royce Brown

When trying to decide how to build a control panel for the yard of my layout, and many hours of thought and consternation, the decision was made to try out Rix Products¹ CTC levers for switch machine control. Many model railroaders use commonly available DPDT toggle switches for turnout control. Using DPDT toggles has the advantage of being able to locate the switch at the frog position on the schematical representation of the yard. If wanting to place the switch levers in rows and columns, similar to a CTC machine, reference numbers will have to be used to indicate which lever corresponds to which switch on the track diagram. The feature I liked about the Rix Lever² (part # 628-0061) is that it looks much more “Railroad” to me. Another supplier of CTC machine parts is Mike Burgetts company Control Train Components³. He also sells other components that could be used to further enhance the appearance and operation of CTC machines. I’ve often envied those who have a Union Switch & Signal styled CTC machine to operate their layout. General Railway Signal also made CTC machines.

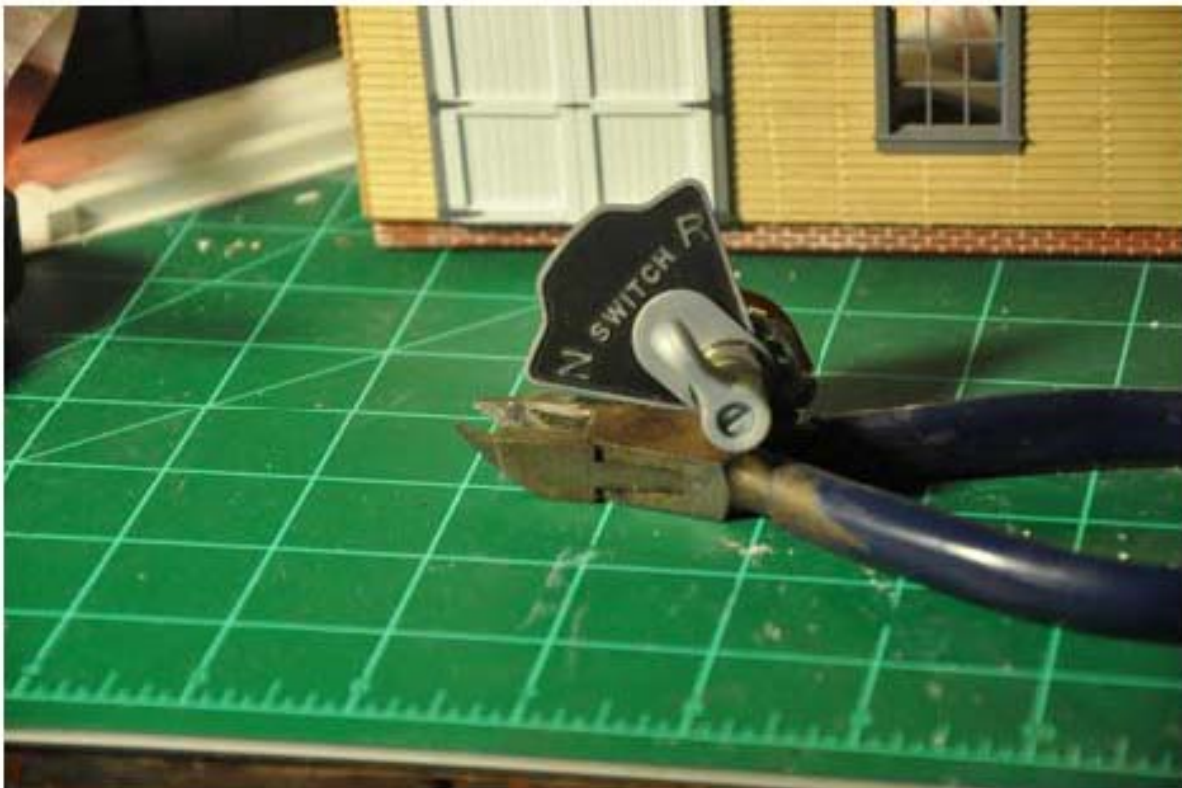


(Fig 1. View of my CTC Styled Control Panel)

To make my control panel styled like a CTC machine, it was decided to place the levers at the lower portion of the control panel and the track diagram at the top of the control panel, similar to CTC machines. Trying to place these at the top on the diagram would make the panel very large. Each lever was assigned a number and a corresponding number was placed at the frog position on the track diagram. This doesn't add all that much to operating complexity. After finding the turnout on the track diagram, the corresponding lever number is located.

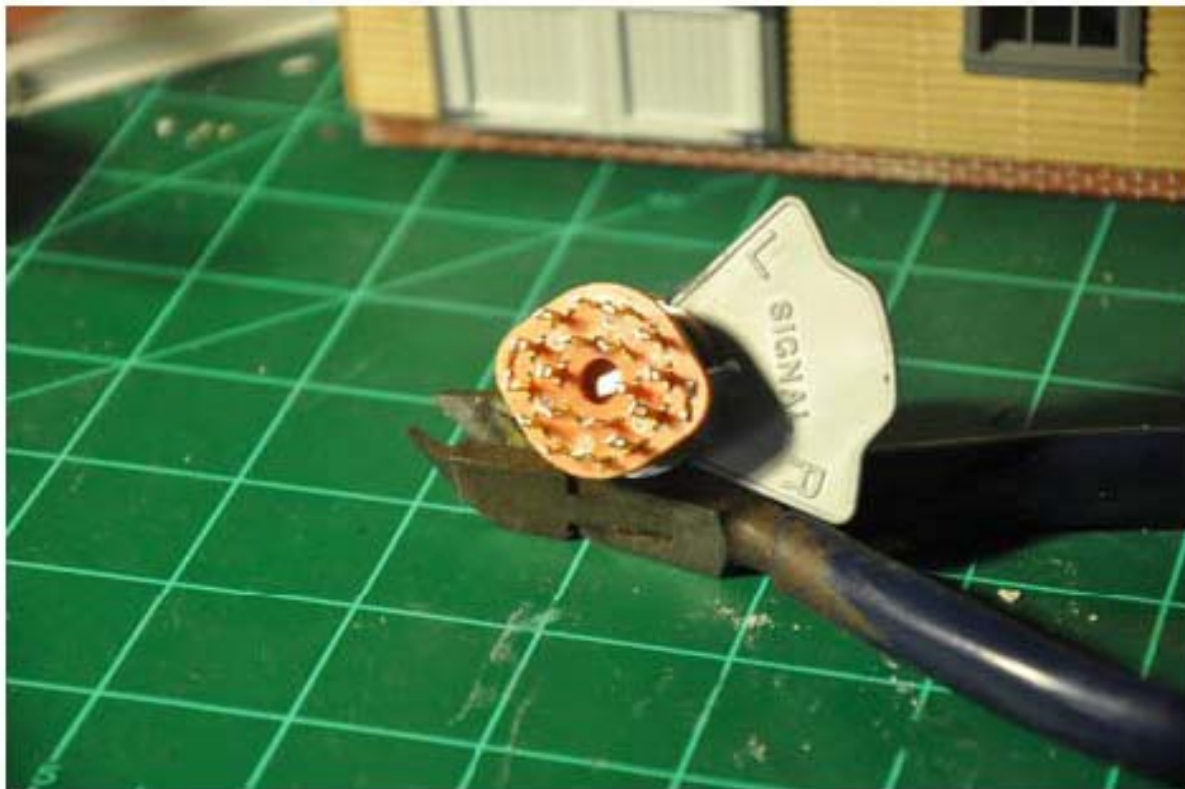
Initially, I decided to make the cabinet from 1/8" masonite to see if I liked the concept. Later, I intended to fabricate a permanent panel and cabinet from sheet metal. The masonite cabinet worked well enough that I decided to make it permanent. I painted it with a can of cheap spray paint that looks close enough to US&S's green to suit me.

The plastic legend plates that come with the RIX kits are unpainted. One side is marked "switch" and the other is marked "signal" for those building a full blown CTC machine. To paint these, RIX recommends to paint them with glossy black paint, let them dry, and then lay flat on fine grain sandpaper and move in a circular motion until the paint is removed from the raised lettering. (Fig. 2) This works well, leaving sharp crisp lettering.



(Fig. 2 Front View of switch assembly)

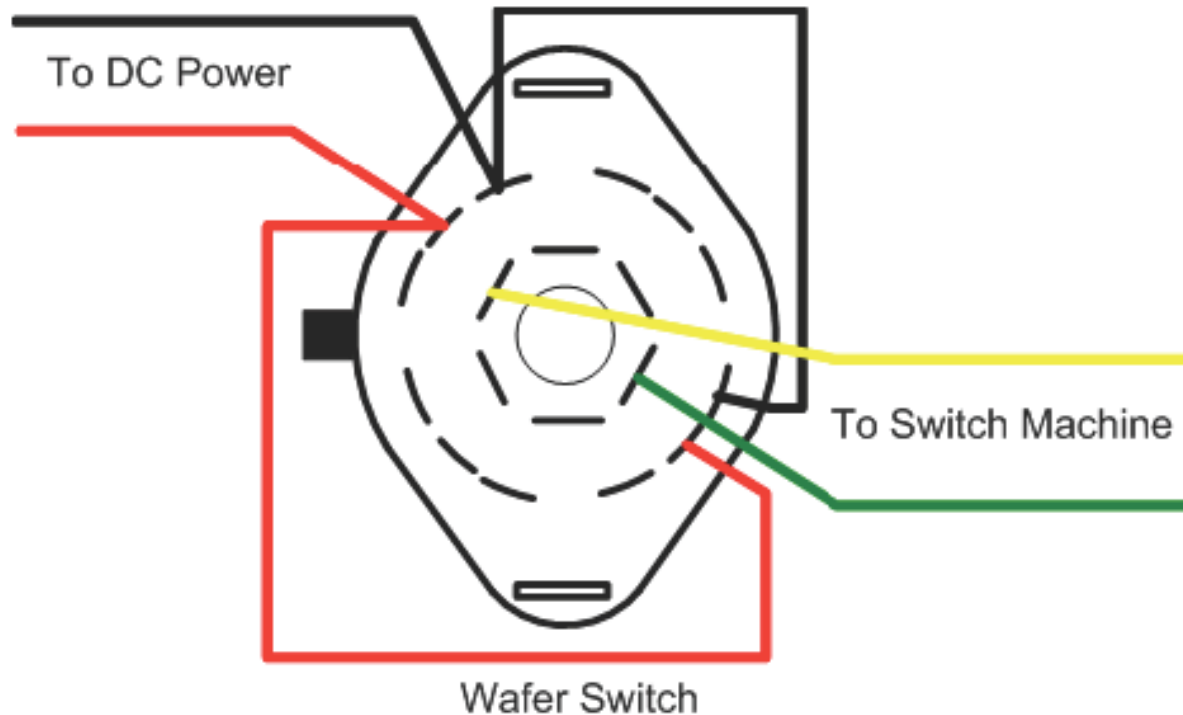
The instructions included with the RIX kit specifies wafer switches with obsolete part numbers. After searching the catalogs of various electronics suppliers and the internet, the correct part number was found. The only supplier of these switches that could be found was Mouser Electronics⁴. These are made by Alpha and the Mouser part number is SR2511F-0602-19FOB-E9-N-W. These are a 6-pole 2-position switch (Fig. 3). The shaft, when viewed from the end, is in the shape of a D. The levers don't need a setscrew as do so many knobs and levers that often come loose resulting in slippage. The RIX levers have a steel insert. Insert these into the lever and then push the lever onto the shaft of the rotary switch. Also, having these switches with more than two poles could be useful for other electrical possibilities. Signals could be activated. Turnout position could be read by controllers or used to light switch stands. Control panel position indicators could also be installed next to the legend plate and activated from the extra contacts.



(Fig. 3 View of Rotary Wafer Switch)

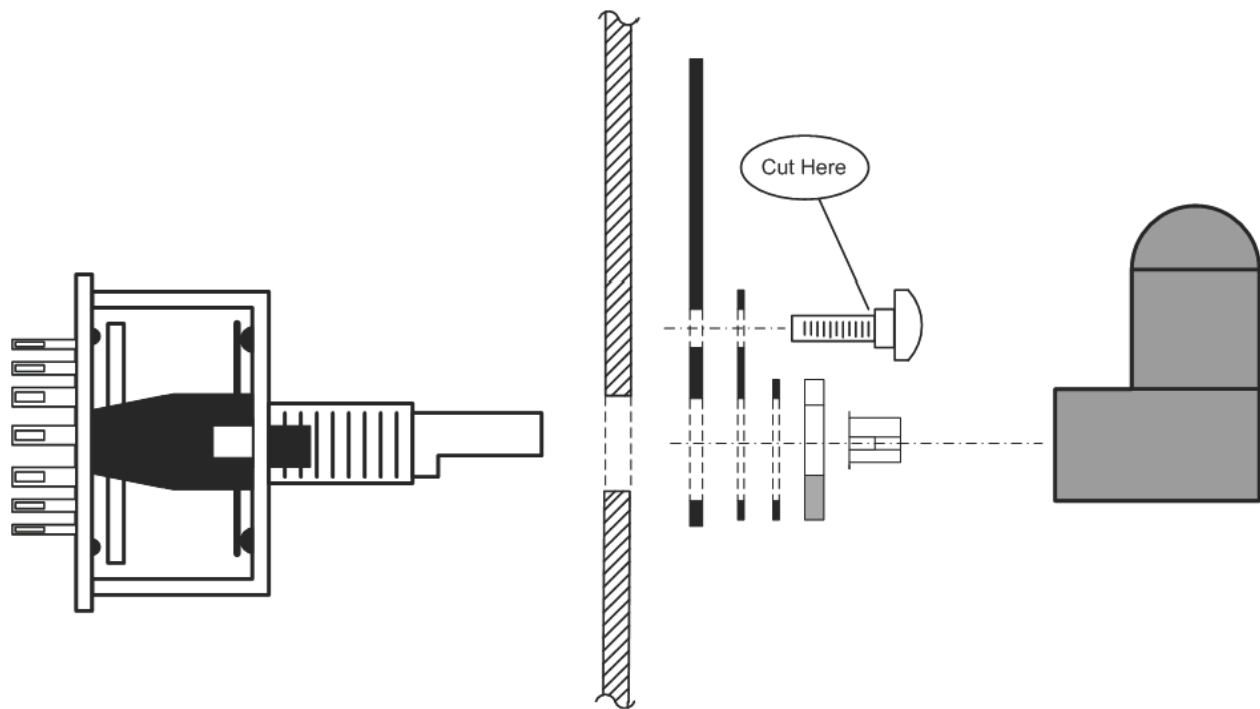
After examining the switches to determine the correct terminals used to get DPDT operation, I decided to stop immediately and make a drawing of the terminals to solder the connecting wires to and use this as a guide when wiring these. Chances are likely that I would simply forget how to wire these before long! (Fig. 4) When I wired these, I would use the tab shown in the drawing as a reference for soldering. We want the lever handle to indicate that the turnout is set for straight ahead or for the diverging track. The legend plate is marked with an N and an R. N is used whenever the train is desired to

go straight through the turnout. R is used when taking the diverging route. If the lever position is incorrect after wiring, reverse the incoming DC power. If the lever position is correct and the turnout position isn't correct, reverse the wiring between the wafer switch and the turnout.



(Fig. 4 Wire Placement at wafer switch)

The final cost of using these switches and the RIX CTC levers was not much more costly than using commonly available DPDT switches. Each RIX kit comes with enough hardware for two switch installations. They are priced at \$9.95 a kit. Each wafer switch from mouser is \$2.77 in single quantities. When buying quantities of 50 the price is less. The final price when I installed these came to \$7.26 per turnout. This isn't much more expensive than toggle style DPDT switches. DPDT toggle switches start at about \$3.99 at Radio Shack. If more than two poles are used, the cost of a 3PDT or a 4PDT would be much more expensive than these. I'm tempted to buy a large quantity of these switches. In the digital age of push buttons and touch screens, these are quickly becoming "antiques."



(Fig. 5 Switch Assembly-Exploded View. From Left to Right- Wafer Switch, Control Panel, Legend Plate, Plastic Part, Steel washer, Hexagonal Nut, Steel Insert, Control Lever. Note: The plastic screw must be cut were indicated)

Another thing I discovered after I built this control panel was that by using the levers instead of toggle switches, the operators hand doesn't come close to the panel often leaving dirty fingerprints and wear as I've noticed on others control panels that uses toggle switches.

What began as an experiment in control panel construction has left me very happy with the results. My layout might not ever grow to the point of justifying a full blown CTC machine, but I'm enjoying my control panel that is styled after a CTC machine. To me, it just makes it more "railroady", furthering my enjoyment of model railroading!

¹ www.rixproducts.com

² Part #628-0061

³ Control Train Components www.ctcparts.com A company offering parts and instructional videos for CTC machines.

⁴ www.mouser.com



19TH ANNUAL TRAIN SHOW

**SPONSORED BY THE NEBRASKA WEST-CENTRAL DIVISION OF
THE NATIONAL MODEL RAILROAD ASSOCIATION**

LOCATION: D&N EVENT CENTER

501 East Walker Road

North Platte, Nebraska

APRIL 13th AND 14th, 2013

HOURS: 9:00 A.M. - 5:00 P.M. SATURDAY THE 14th

AND 10:00 A.M. - 4:00 P.M. SUNDAY THE 15th

ADMISSION: \$3.00 CHILDREN UNDER 12 \$1.00

(under 5 with paid adult free)

TRAIN LAYOUTS AND DISPLAYS,

VENDOR TABLES SELLING RAILROAD ITEMS

**NOTE TO VENDORS: TABLES ARE \$12.50 EACH TILL APRIL 1ST, AFTER APRIL 1ST THEY
ARE \$20**

**UNION PACIFIC TOURS WILL BE AVAILABLE AS AN EXTRA FARE ITEM
(Saturday only)**

FOR ADDITIONAL INFORMATION CONTACT:

Gene Tacey


P.O. Box 485

Sutherland, NE 69165

308-386-2489

taceys@gpcom.net

DEALER DIRECTORY Please send new art work or text and logo I will make new ad's.



House of Trains
Phone (402) 934-RAIL Fax (402) 392-7394

ATHEARN • INTERMOUNTAIN
KATO • MTL • ATLAS • DCC

8106 Maple Street
Omaha, NE 68134
david@houseoftrains.com
www.houseoftrains.com

DAVID L. MRGNY



Heritage Metal Art
Metal Artwork of Trains,
Steam Engines, Tractors
and Custom Designs

James Kuttner

10138 W. Canyon Ave.
Denver, CO 80235
303-988-8339

e-mail: heritagemetaljm@aol.com
www.heritagemetalart.com

Frank's Train Shop

15105 Metcalf Ave.
Shawnee, Kansas 66223
Frankstrainshop.com
Frank Fisher Engineer

We Buy Train Collections
Small, Large, and Wholly Cowl

(913) 481-6820 shop
(913) 710-4321 call




River Eagle HOBBIES
Mike Duncan

301 Main Street • Boonville, Mo. 65233 •
660.882.2326 • riveraglehobbies@hotmail.com

Model Trains • RC Cars • Boats • Planes
Metal Detectors • Paint Ball • Slot Cars • And More



BUILT-RITE MODELS **Jim Dimatteo**
OWNER

190 Western Avenue
Branson, Missouri 65616

Home: 417-239-0436
Cell: 417-559-3973

www.built-ritemodels.com
jbdimatteo@aol.com

SPRING CREEK MODEL TRAINS, LLC

304 Bryson Ave, PO Box 304
Deshler NE 68340

CALL us at 402-365-7628

Dave and Deb Zucker

e-mail dzucker@gpcom.net
www.springcreekmodeltrains.com




Digital Command Central, Inc.

Custom DCC Decoder & System installations

RAY UHLICH
6416 W. 109th Street - Overland Park, KS 66212
(913) 322-4223

www.dcc-by-dcc.com dcc_by_dcc@yahoo.com

Miles Hale
Provost

Model Railroad University

5608 North Mercier Drive
Kansas City, MO 64118
Ph. 816-746-1567

www.modelrailroadinguniversity.com

DEALER FOR

North Coast Engineering DCC	20% Disc
Soundtraxx Decoders	20% Disc
DCC Specialties - Auto Responder & Ch. Breaker & Harn	20% Disc
North West Short Line Parts & Tools	15% Disc
Circuitron & Toridon Switch Machines	20% Disc

Decoder Installations, DCC wiring & consulting

BIE Weaver
7A Clover Ln.
Holiday Island, AR 72631
479-253-9325 whip@ipeco.net



JJ&CL
You need it. We'll get it.

HO Engine Repair
Soundtraxx • Tsunami
Decoder Installation

John Heidenescher

901 McKenzie Avenue
Council Bluffs, IA 51503

Bus: 712-328-6647
Fax: 712-256-6607

john@jjclmts.omhcoxmail.com

Fun & Games
"the people people"

www.scalefigures.com

P. O. Box 243
1040 Myrtle Ave.
Jefferson City, MO 65102
Telephone: 573-635-6163
FAX: 573-635-9680
allen@scalefigures.com


Allen Pollock
OWNER

Brantline Sales

www.a-model-railroading.com

Dennis Brandt

1004 South 3rd Street
Norfolk, NE 68701
402-991-3115
brantline2000@yahoo.com




MORSE PRODUCTIONS

8324 HALL DRIVE - LENEXA, KS 66219
913-894-6472
ronmorsemmr@gmail.com

Ron Morse, MMR

PLASTER STRUCTURE KITS, PAPER BUILDINGS,
MODEL RAILROAD PHOTOGRAPHY



FRED'S TRAIN SHOP

7327 W. 80th St., Overland Park, KS 66204

O, S, HO, N, Z & G Scale
New, Used & Vintage Trains, Accessories & Memorabilia

Ph: 913-383-3500 Open: Tues.-Fri. 10-6 Sat. 9-5
www.fredstrainshop.com Closed: Sun/Mon

Sgt. Shultz Train Repairs
Authorized & Factory Trained

Your Lionel / MTH Service & Repair Specialist


Lionel TMCC, Legacy
MTH Proto 1, 2, 3
2 & 3 Rail, Ho Proto 3
Gardner, KS 66203
913-484-2555 Cell

Lale Shultz
Owner/Operator

Website: SgtISTR.com
Email: AxleShultz@yahoo.com



E-railhobbies
3306 Charles Page Blvd
Tulsa, OK 74127
918-382-0382
918-382-0381 fax
erailhobbies@cox.net



DCC Specialists
Concentrating on HO and N Scales, helping with all scales
Offering scratch building supplies to Finished Brass mod-



I can also repair any TMCC equipped locomotive:
Atlas, Weaver, Bachman, 3rd Rail, K-Line, Williams, & others.

If it's TMCC equipped, I can repair it!

Please call or drop off your repair at Sgt. Shultz Train Repairs Authorized Drop off center:

Fred's Train Shop
7327 W. 80th Street,
Overland Park, KS 66204

Sgt. Shultz Train Repairs
Authorized & Factory Trained

Website: SgtISTR.com

Pike Registry

Please send new art work or text and logo I will make new Registry. www.cabooseK@kc.rr.com

UNION PACIFIC RAILROAD



CHARLIE STAPLETON
General Superintendent
Kansas Division

1411 N. 79th St. HO Scale
Kansas City, KS 66112 913-299-2923

4317 Mahogany Lane, Belleville, IL 62226
Tel: 618 277 5518 E-Mail: smithpb@sbcglobal.net



MR. DENNIS O. SMITH

DEERBROOK & SALTERN RAILWAY CO.
THE IRON ROAD

565 SOUTH YORK COURT
Springfield, MO 65802

NOTICE QUARTER #104



**Loon Lake Railway
& Navigation Co.**

Sn3

Peter B. Smith
Receiver

4317 Mahogany Lane, Belleville, IL 62226
Tel: 618 277 5518 E-Mail: smithpb@sbcglobal.net

TO: WEAPERVILLE WENKAY CROSS IN WESTEAR RD WY OF THE WEARDING WIMBAY WEABLE BUD

PASS NO. _____

LIFE 3211

HO SCALE

RESTORED SHORT LINE LOGGING CO. INC. SERVING ALL LOGGING BRANCH

GROUP MEMBERSHIP & BILL, MEMBER & FRIENDS 417-273-9629



THE BRIDGE LINE

HO SCALE CLUB
6060 NW WAUKOMIS
KANSAS CITY, MO 64151
PH: (816) 436-5156

MEMBERSHIPS OPEN

CLUB MEETS WEDNESDAY 7PM

CONTACT: LENNY OHRNELL (PRESIDENT)

Delaware & Hudson Model Railroad Susquehanna Division



John A. Shaw
Superintendent
225 Wasatch CT NE
Cedar Rapids, IA 52402
(319) 265-8122

PIPER VALLEY RAILROAD

CO-OP HEADQUARTERS
912 RIDGE DRIVE
BELTON, MO 64012
(816) 331-2773

JOE B. ROBERTSON, MMR
PRESIDENT & CEO

Missouri Pacific Lines

White River Division

DAVID BOGARD
District Superintendent

Maumelle, Arkansas

Phone 1-(501)-851-6278

MoPac55@hotmail.com



Ron Morse, MMR
8524 Hall Dr.
Lenexa, KS 66219
913-894-6472

ronmorsemmr@gmail.com



NEBRASKA & SOUTHERN RAILROAD



"Links The Gulf Coast" "The Way South"

GENE R. TACEY
SUPERINTENDENT

P.O. BOX 485 SUTHERLAND, NE 69165

308-386-2489

tacey@gpcom.net

PR & SR RR

Pleasant Ridge and Shelter Rock Railroad



Thomas B. Dole
President and Owner

1796 Commodore Walk
Wooden, Illinois 62097
(Holiday Shores)

HO Scale

(618) 659-0684

tbd1945@aol.com

BALTIMORE & NEW YORK RWY. St. George Terminal Sub-Division

1938 E 55th PI S Tulsa OK 74105

O Scale



2 Rail

918-579-0705

edb8391@cox.net

Providing Unparalleled Rail Transportation



Barry M. Quensel
President

The Altamonte Route

480 SE Lasse Loop
Lawton, OK 73501

Phone: (580) 351-2037

e-mail: QuBer1@aol.com

B.R. & B.P. R.R.

Soon to be ... Passenger Service through the Rockies and Bitterroot Mountains to points west

FREE FROM BAD INDIANS, BAD MEN & MEAN ONRY RED BULLS

When we get our tracks finished to points west ...
B.R. & B.P. R.R. will be the safest passage
available across the Bitterroot Mountains
autiful Scenery ... Excellent Accommodations in Rou

Black Rock & Bitterroot Pass R.R.
established 1889

Business Opportunities in Black Rock and points West
Black Rock Yardmaster Larry Diehl
phone CRest 2-2790

C&RM RR

Canyon & Rocky Mountain RR

President

Randolph P. Meyer

156 Ladue Oaks Dr.

Creve Coeur, MO 63141

(417) 883-5350
RJWILLIAMS1@MCHSI.COM

RON WILLIAMS, MMR
PRESIDENT

ST. LOUIS - SAN FRANCISCO RAILWAY COMPANY
3129 S CHAMBERY AVE SPRINGFIELD, MO 65804

D & EM Railroad

Dianne Mullins
Conductor & Co-Owner
Earl Mullins, MMR
Engineer & Co-Owner

706 Dockside Cove
Hastings, NE 68901
402-463-0343
emullins@incbraska.com



Pike Registry

Please send new art work or text and logo I will make new Registry. www.cabooseK@kc.rr.com

Xx

X

Xx

Xx

Xx

Xx

Long Pine Valley



182 Hickoka Street
Wayne, NE

Email: jvandelden@longpinevalley.com
Phone: 402-635-9551

To Rent this space

Call Louis

913-393-3495

Xx

Xx



Steve McKee
On3

19405 W 98th Terrace
Lenexa, KS 66220-9751

Home Phone 913-780-9009
Cell Phone 913-708-5925
Email smckee@everestkc.net

Xx

Xx

B.R. & B.P. R.R.

Soon to be ... Passenger Service through the
ckies and Bitterroot Mountains to points west

FREE FROM BAD INDIANS, BAD MEN & MEAN ONRY RED BULLS

When we get our tracks finished to points west ...
B.R. & B.P. R.R. will be the safest passage
available across the Bitterroot Mountains
autiful Scenery ... Excellent Accommodations in Rou

Black Rock & Bitterroot Pass R.R.
established 1889

Business Opportunities in Black Rock and points West
Black Rock Yardmaster Larry Diehl
phone CRest 2-2790

Twin Pine Lumber Company



1804 South 2nd Street
Newark, NE

Email: dbrandt44@gmail.com
Phone: 402-992-2415

Xx

Xx

Pike Registry

Please send new art work or text and logo I will make new Registry. www.cabooseK@kc.rr.com

PHONE: 913-649-3530

Division of C.R.H.
Equipment Co.

CHARLES R. HEYING
PRESIDENT



10209 BROADMOOR
OVERLAND PARK, KS 66212

RI MASON ROAD SPURS a division of the ROCK ISLAND LINE

Gene Coffman 541 N. Mason Rd.
314-469-4882 St. Louis, MO 63141



PSEUDO-SOO LINE

"The Swamp Level Route"

Home of the Swamp Gas
Gang

Bob Johnson—Head Gasser
St. Peters, MO 63303 (636) 922-2507
bjohnson2000@earthlink.net

PENNSYLVANIA RR



Kansas City Div.

Jim Flynn Supt. (816) 331-6539

PURGATORY & DEVIL RIVER RAILROAD

SERVICE TO THE HIGH COUNTRY

MOUNTAIN RAILROADING IN HO N3

<http://www.purgatoryanddevilriver.com>

PAUL RICHARDSON, MMR - PURGATORY DIVISION
DUANE RICHARDSON, MMR - EL LOBO DIVISION

Mark Juett
Cincinnati Division Superintendent



Louisville & Nashville Railroad Company

1910 NE Lake Dr., Smithville, MO 64089
Telephone (816) 866-4422
Radio Phone (816) 536-9421
Facsimile (816) 866-4422
Email jjuet@kc.rr.com

The Hartland RR HO INSIDE & G OUTSIDE

President Ted Tschirhart
Kansas City, MO
816-861-3449

MOUNTAIN RAILROADING IN HO N3

<http://www.purgatoryanddevilriver.com>

PAUL RICHARDSON, MMR - PURGATORY DIVISION
DUANE RICHARDSON, MMR - EL LOBO DIVISION



SHELTER BAY RAILWAY
9331 FARLEY LANE
OVERLAND PARK, KANSAS
66212

913-888-4080
PHBAY@AOL.COM

G. PATRICK HARRIMAN, MMR
PRESIDENT
CHIEF OPERATING OFFICER



The Pectate Route

Kansas Arkansas and Ozarks Railroad
Parsons Kansas
Bob Wintle MMR President



PLATTE
VALLEY
NORTHERN
RAILROAD
COMPANY

Paul W. Myers
President & CEO
10904 N. Harrison Street
Kansas City,
Missouri 64155

816 734-3719
paulwmyers@kc.rr.com



Missouri Kansas Texas
Railroad
N-Scale Dallas Sub Division
Parsons Kansas

James M. (Mike) Peters
President and CEO



Remembering the Katy



OREGON COAST MINING & TIMBER RR
9331 FARLEY LANE
OVERLAND PARK, KANSAS
66212

913-888-4080
PHBAY@AOL.COM

G. PATRICK HARRIMAN, MMR
PRESIDENT
CHIEF OPERATING OFFICER

MCoR



NMRA

Clear Creek & Quicksilver
"The Mountain Goat"

Allen Pollock
General Manager

P.O. Box 243
Jefferson City, MO 65102



WESTERN PACIFIC

Industrial Switching
In Northern California

Steve Newland
Yardmaster

303 W. 1st Ave.
Garnett, KS 66032
(785) 448-1627

St. Jacques Northern Division of Great Northern Pacific Railway

John Hardy
Division CEO *The Big River Line*

2528 Wild Valley Drive Telephone
High Ridge, MO 63049 314-677-8270

Missouri Pacific Lines



Robert Joseph Amsler, Jr.
5630 Arendes Drive
St. Louis, MO 63116



Kansas City Northern

6060 NW Waukomis Drive
Kansas City, MO 64151
Features three vintage 16" gauge
passenger carrying trains.

Open weekends
May to September



Exit

Enter

Holiday Spirit Train Hours

Day	Hours
Monday	9:00 - 11:00 a.m. 1:00 - 3:00 p.m.
Tuesday	9:00 - 11:00 a.m. 1:00 - 3:00 p.m.
Wednesday	9:00 - 11:00 a.m. 1:00 - 3:00 p.m.
Thursday	9:00 - 11:00 a.m. 1:00 - 3:00 p.m.
Friday	9:00 - 11:00 a.m. 1:00 - 3:00 p.m.
Saturday	9:00 - 11:00 a.m. 1:00 - 3:00 p.m.
Sunday	9:00 - 11:00 a.m. 1:00 - 3:00 p.m.